

SPECIFICATION

SFD064VT4-INV

Customer Approved

Customer _____

Date _____

By _____

Sunful's Confirmation

Approved By _____

Prepared By _____



Room A ,18/F,Haiying Building ,Fuhua Rd,
Futian District, Shenzhen.

Tel: +86-755-82911760 82911758

Fax:+86-755-82915120

Date: 2005.1.10

I、General Features:

This DC-AC inverter designed for PD064VT1/4/5 CCFL(Cold Cathode Fluorescent Tube) switching power supply. LCD panels should be PVI-2-Tube or other low profile application.

II、Application、Storage Temperature And Humidity:

Application Temperature Range : -10~60⁰C

Application Humidity : 10%~90% RH, non-condensing

The inverter can be used at least for 80000 hours within the temperature specified above

Storage Temperature Range : -20~70⁰C

Storage Humidity : 10%~90%RH,non-condensing

III、Electrical Requirements

1.Input Characteristics:

Item	Symbo l	Conditions	Min	Type	Max	Unit
Input Voltage	V _{IN}	V _{IN} =DC12±10%	10.80	12.00	13.20	V
Input Current	I _{IN}	V _{IN} =12V V _{ON} =5V	0.5	0.6	0.7	A
Control Voltage	V _{CON}	ON=5V OFF=0V	0	L/H	5	V
Input Power	P _{IN}	V _{IN} =12V V _{CON} =5V	-	7.2	-	W

2. Output Characteristics:

Item	Symbol	Conditions	Min	Type	Max	Unit	Remark
Output Current	I_{OUT}	$V_{CC}=12V$ $V_{CON}=5V$	11.50	12.00	12.50	mA	Single side
Output Voltage	V_{OUT}	$V_{CC}=12V$ $V_{CON}=5V$	330	380	450	V	
Working Frequency	F_L	$V_{CC}=12V$ $V_{CON}=5V$	30	35	40	KHz	
Output Open Voltage	V_{OL}	$V_{CC}=12V$ $V_{CON}=5V$	900	-	-	V	

IV、Connector Socket

1. CN1: Input Connector (JST S4B-XH-A or compatibility)

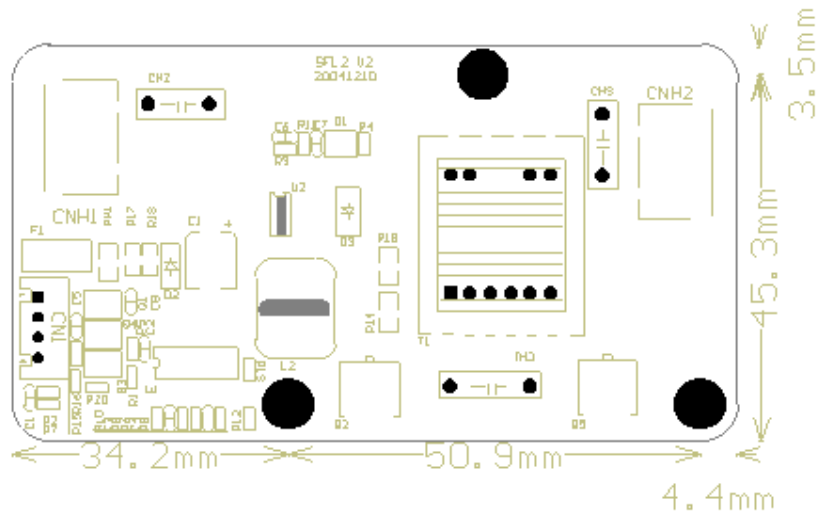
Pin No	Symbol	Description
1	V_{IN}	DC +12V
2	GND	Ground
3	V_{CON}	ON/OFF control ON=+5V OFF=0V
4	V_{BRT}	Brightness control $V_{BRT} = 0V \sim +5V(\text{dark})$

2. CNH1\CNH2: Output connector adapter to JST BHR-03VS-1

Pin No	Symbol	Description
1	Output	Lamp Low Voltage
2	Output	Lamp High Voltage 330~450V

Notes : Safety clearance shall be more than 2mm/KV.

V、 Driver board outline drawing:



OutLine:89.5*48.8*13.1mm
 Toplayer High (Max):9.5mm
 Board Thickness: 1.6mm
 BottomPlayerHigh (Max): 2.0mm
 Screw: D3.0mm

VI、 Sample Test Report

PRODUCT: SFL2

Test Device :		PXN-1503A		TEXTRONIX 2245A					
Test condention:		Vin=12V		Vcon=5V		Vbrt=NC		R _{Load} =102K Ω	
Item Times	I _{IN} A	I _{OUT1} mA	I _{OUT2} mA	V _{OUT1} V	V _{OUT2} V	F _{L1} KHz	F _{L2} KHz	Open VOL1 KV	Open VOL2 KV
1	0.31	3.1	3.3	378	387	36.62	35.11	898	900
2	0.32	3.2	3.2	393	389	36.78	35.24	897	899