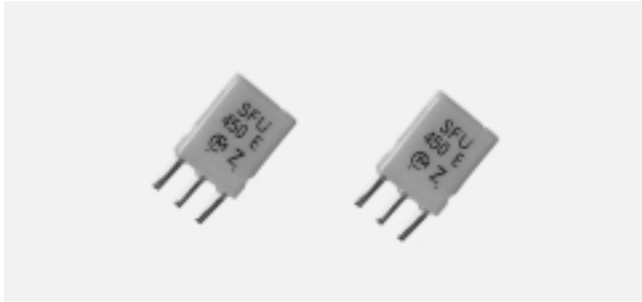


PIEZO FILTERS CERAMIC FILTERS FOR AM APPLICATIONS

SFU450/455kHz



The following filters were designed to address the needs of standard AM filtering requirements. These filters are recommended for use in low cost products where economically, efficient designs are critical.

SPECIFICATIONS

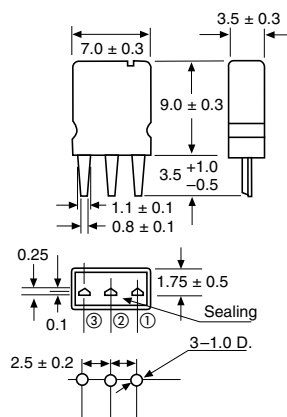
SFU450/455kHz

Part Number	Center Frequency (kHz)	3dB Bandwidth (kHz)	Ripple (dB) max.	Selectivity $F_0 \pm 9\text{kHz}$	Termination Impedance (Ohms) max.	Spurious Response (dB) min.	Insertion Loss (dB) max.	Operating Temperature Range	Withstanding Voltage
*SFU455A	455 ± 2	$10 (\pm 3)$	0	4@-10kHz 6@+10kHz	3k	10 (1~3MHz)	5	-10°C to +80°C	50V DC
SFU455B (connected to an IFT)	462 ± 2	$10 (\pm 3)$	—	4@+10kHz 6@-10kHz	3k	10 (1~3MHz)	5	-10°C to +80°C	

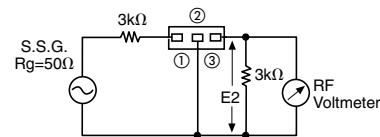
() Typ. value

DIMENSIONS: mm

SFU455



CIRCUIT



SFU455B is designed to be connected with an I.F.T.

*Available as standard through authorized Murata Electronics Distributors.