

# SG - 207

The SG - 207 photointerrupter high - performance standard type, combines high - output GaAs IRED with high sensitive phototransistor.

### FEATURES

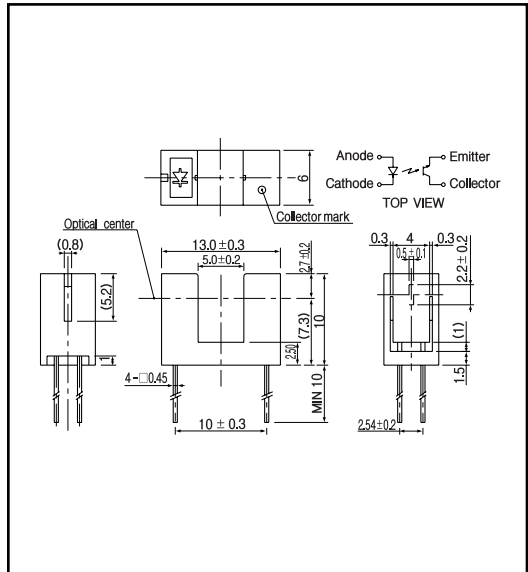
- High performance
- High - speed response
- 5mm gap.
- Widely applicable

### APPLICATIONS

- Tape - end sensors
- Timing sensors
- Edge sensors
- Copiers

### DIMENSIONS

(Unit : mm)



### MAXIMUM RATINGS

(Ta=25 °C)

	Item	Symbol	Rating	Unit
Input	Power dissipation	$P_D$	100	mW
	Reverse voltage	$V_R$	5	V
	Forward current	$I_F$	60	mA
	Pulse forward current <sup>*1</sup>	$I_{FP}$	1	A
Output	Collector power dissipation	$P_C$	100	mW
	Collector current	$I_C$	40	mA
	C - E voltage	$V_{CE0}$	30	V
	E - C voltage	$V_{EC0}$	5	V
	Operating temp.	$T_{opr.}$	- 20 ~ +85	
	Storage temp.	$T_{stg.}$	- 30 ~ +85	
	Soldering temp. <sup>*2</sup>	$T_{sol.}$	240	

\*1. t w 100 μsec.period :T=10msec.

\*2. For MAX. 5 seconds at the position of 2mm from the package

### ELECTRO-OPTICAL CHARACTERISTICS

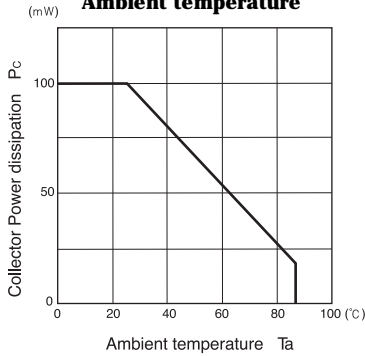
(Ta=25 °C)

	Item	Symbol	Conditions	Min.	Typ.	Max.	Unit.
Input	Forward voltage	$V_F$	$I_F=30mA$		1.2	1.5	V
	Reverse current	$I_R$	$V_R=5V$			10	μA
	Capacitance	$C_t$	$V=0, f=1KHz$		25		pF
	Peak wavelength	$\lambda_p$			940		nm
Output	Collector dark current	$I_{CE0}$	$V_{CE}=10V$			0.1	μA
Light current		$I_L$	$V_{CE}=5V, I_F=20mA$	0.25			mA
	C - E saturation voltage	$V_{CE(sat)}$	$I_F=30mA, I_C=0.1mA$			0.3	V
Switching speeds	Rise time	$t_r$	$V_{CC}=5V, I_C=2mA$		5		μsec.
	Fall time	$t_f$	$R_L=100$		5		μsec.

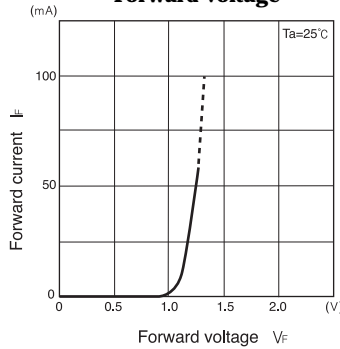
Photo interrupters(Transmissive)

SG 207

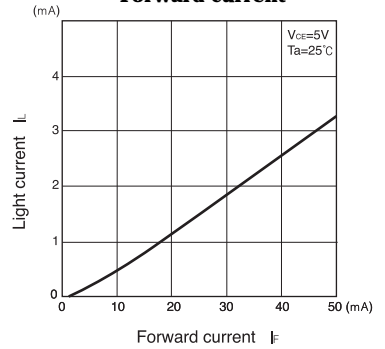
**Collector power dissipation Vs. Ambient temperature**



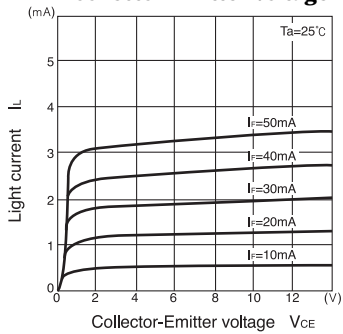
**Forward current Vs. Forward voltage**



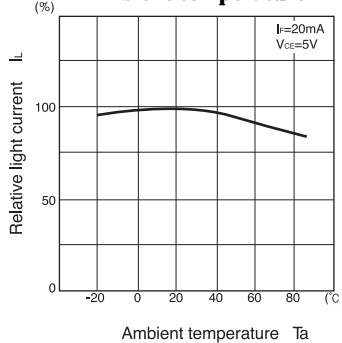
**Light current Vs. Forward current**



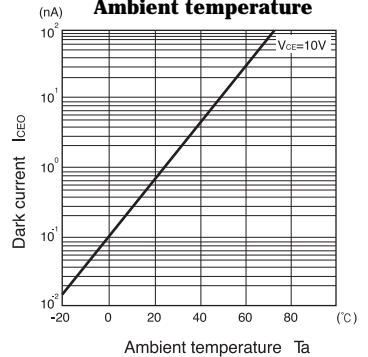
**Light current Vs. Collector-Emitter voltage**



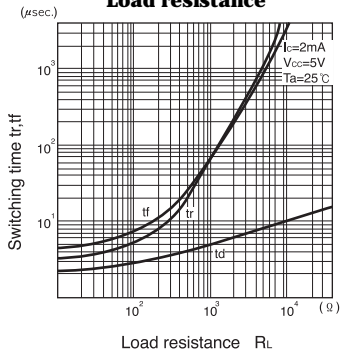
**Relative light current Vs. Ambient temperature**



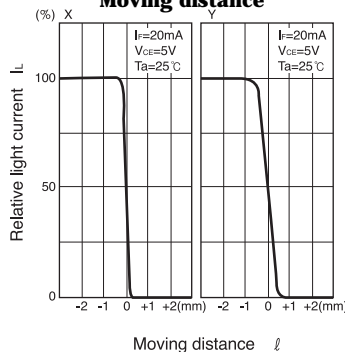
**Dark current Vs. Ambient temperature**



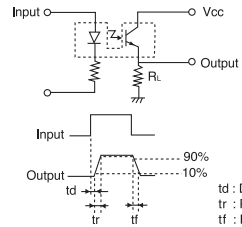
**Switching time Vs. Load resistance**



**Relative light current Vs. Moving distance**



Switching time measurement circuit



Method of measuring position characteristic

