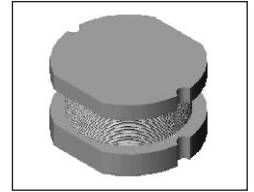


SMT Power Inductor

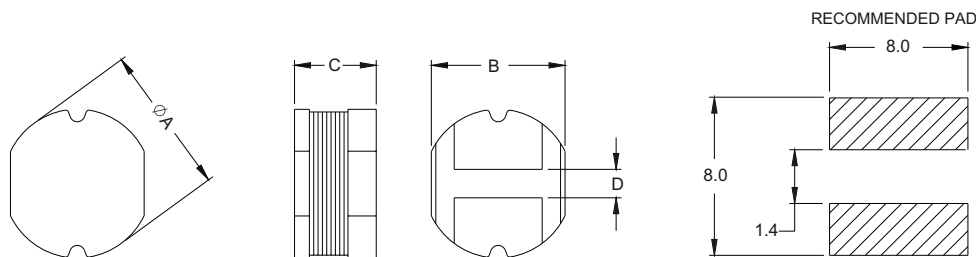
SI84 Type

Features

- Low profile (4.0mm max. Height) SMD type.
- Unshielded.
- Self-leads, suitable for high density mounting.
- High energy storage and low DCR.
- Provided with embossed carrier tape packing.
- Ideal for power source circuits, DC-DC converter, DC-AC inverters inductor application.
- In addition to the standard versions shown here, customized inductors are available to meet your exact requirements.



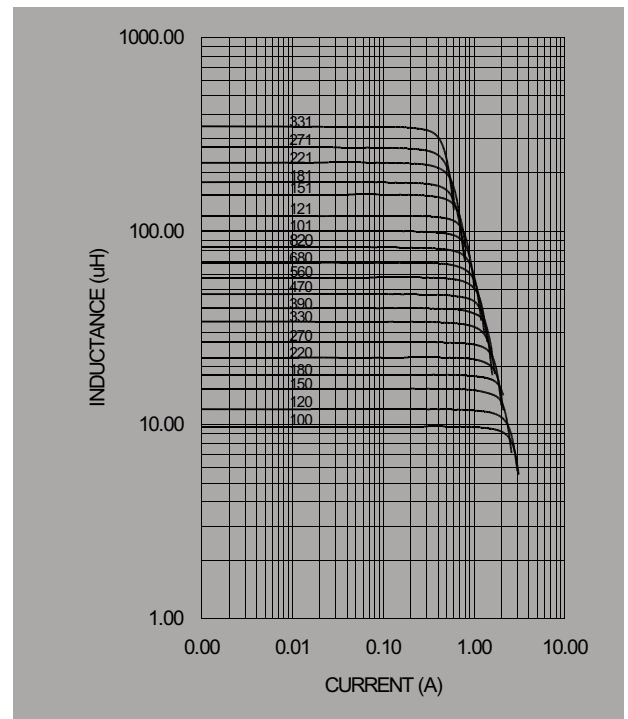
Mechanical Dimension:



UNIT:mm/inch
 A = 7.8±0.2/0.307±0.008
 B = 7.0±0.2/0.276±0.008
 C = 3.5±0.5/0.138±0.020
 D = 1.5±0.2/0.059±0.008

Electrical Characteristics: At 25°C: 1KHz, 1V

PART NO.	L ¹ (uH)	DCR (Ω) MAX	I _{RATED} ² (A dc)
SI84 - 100	10	0.080	1.44
SI84 - 120	12	0.089	1.39
SI84 - 150	15	0.104	1.24
SI84 - 180	18	0.111	1.12
SI84 - 220	22	0.129	1.07
SI84 - 270	27	0.153	0.94
SI84 - 330	33	0.170	0.85
SI84 - 390	39	0.217	0.74
SI84 - 470	47	0.252	0.68
SI84 - 560	56	0.282	0.64
SI84 - 680	68	0.332	0.59
SI84 - 820	82	0.406	0.54
SI84 - 101	100	0.481	0.51
SI84 - 121	120	0.536	0.49
SI84 - 151	150	0.755	0.40
SI84 - 181	180	1.022	0.36
SI84 - 221	220	1.200	0.31
SI84 - 271	270	1.306	0.29
SI84 - 331	330	1.495	0.28



1. Tolerance of inductance
10~330uH±10%
2. I_{RATED}: rated current. ΔL<10%, ΔT<45°C at I_{RATED}
3. Operating temperature: -20°C to 105°C (including self-temperature rise)



DELTA ELECTRONICS, INC.

(TAOYUAN PLANT CPBG) 252, SAN YING ROAD, KUEISAN INDUSTRIAL ZONE, TAOYUAN SHIEN, 333, TAIWAN, R.O.C.

TEL: 886-3-3591968; FAX: 886-3-3591991

<http://www.deltaww.com>