

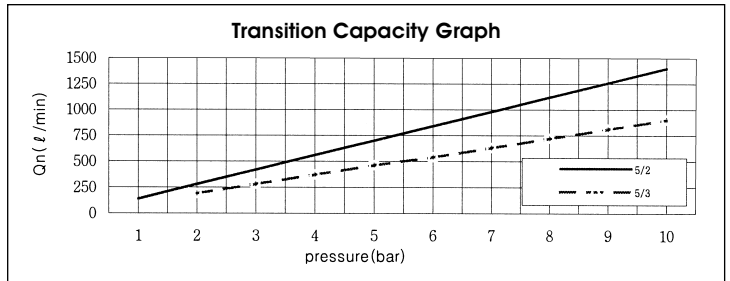
# SIE200

"E" ECONOMY Series  
Solenoid / Pneumatic Valves

- 5/2, 5/3
- 18mm Body Width
- Sub-Base or Manifold Mounting Type
- Transition Flow 700ℓ/min (5bar)

## SPECIFICATION

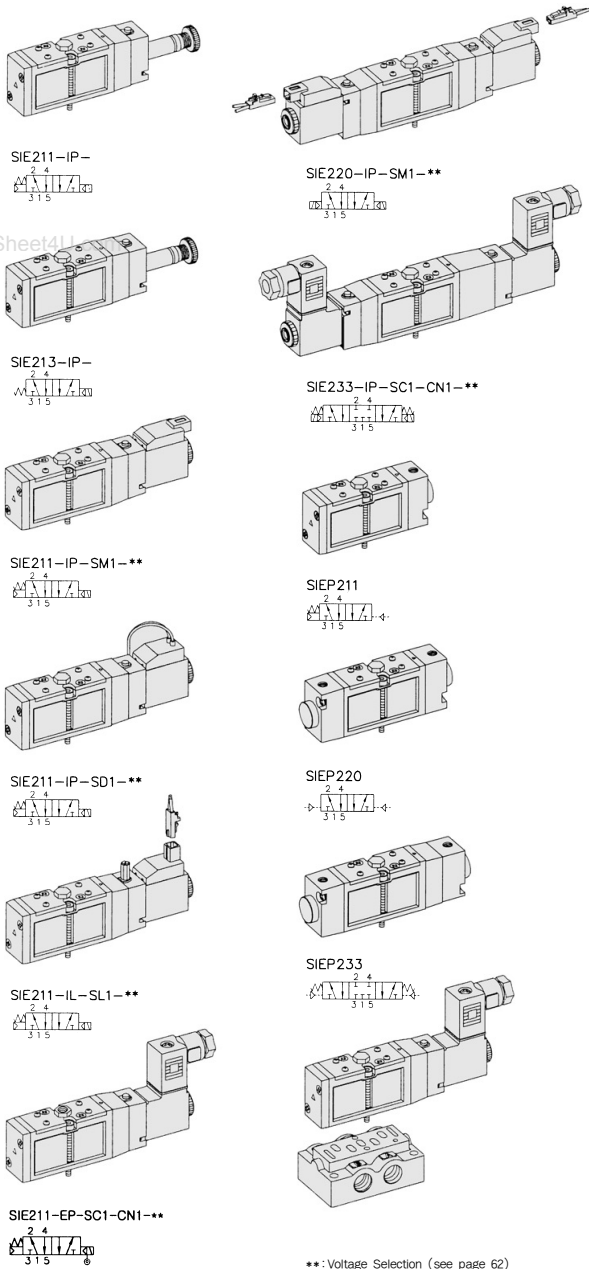
ITEM	SERIES	SOLENOID, PNEUMATIC	
		5 Port 2 Position	5 Port 3 Position
Fluids		Compressed Air & Inert Gases	
Pressure(bar)		1.5~10.0	2.0~10.0
Eff. Sectional Area(mm <sup>2</sup> )-5bar		12.0	8.5
Ambient & Fluid Temp.		5~60°C (41~140°F)	
Response Time(5bar)		25ms or Less	35ms or Less
Max. Working Frequency		5c/sec	3c/sec
Lubrication		Not Required(Use ISO VG32 #)	
Manual Override		Push Button(Standard), Lever Lock(Option)	
Coil Insulation Class		F-Class or Equivalent	
Permissible Voltage Variation		±10% of Rated Voltage	
Off Min. Residual Voltage		AC:20% or Less / DC:10% or Less	
Power Consumption		Holding-AC:3.5VA(60Hz) / DC:2.5W	



### The Material of Parts

■ Valve Body : Die-Cast Aluminium	■ Pilot Parts : Glass Filled Nylon
■ Spool : Aluminium	■ Armature : Stainless Steel
■ Seals : NBR	■ Armature Seals : Viton
■ Spring : Stainless	
■ Cap : Zinc Pressure Die-Cast	

\* The specification on each item can be amended without any prenotice to improve a performance.  
\* The specification on each item can be different from actual specification.



\*\* : Voltage Selection (see page 62)

## ORDERING NO.

**SIE2 1 1 - I P - SC1 - CN1 - A2**

Valve Series	Function	Return Method	Int./Ext. Pilot	Manual Operator	Solenoid Coil Type	Connector Type	Voltage		
<b>SIE2 :</b> Solenoid Valve	1	5/2 Single	0	None	I	Internal Pilot	0	None	
	2	5/2 Double	1	Air + Spring	E	External Pilot	0	None	
	3	5/3 Closed Center	1	Air + Spring	P	Push Non-Locking	SC1	3 Pin Connector Coil	
<b>SIEP2 :</b> Pneumatic Valve	4	5/3 Open Center	2	Air	L	Lever Locking	SG1	Grommet/Flying Leads	
	5	5/3 Pressure Center	3	Spring	SD1	Grommet/Flying Leads With LED	CD1	Connector With LED	
					SL1	90 Degree Plug-in Wire Assembly With LED	CZ1	Connector With LED & Surge Suppressor	
				SM1	180 Degree Plug-in Wire Assembly With LED			A2	AC 220V
								A1	AC 110V
								A4	AC 24V
								D4	DC 24V
								D2	DC 12V

# Solenoid & Pilot Actuated Spool Valves

18mm Body Width

## 5Port 2Position Solenoid Valve

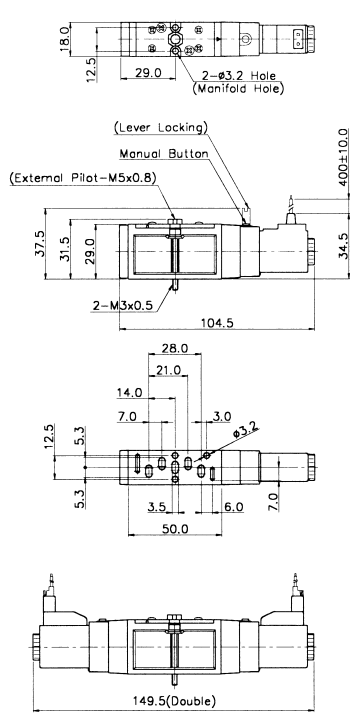
Single Solenoid  
SIE211-IP-SG1-\*\*\*



External Pilot  
SIE211-EP-SG1-\*\*\*



Double Solenoid  
SIE220-IP-SL1-\*\*\*



## 5Port 2Position Pneumatic Valve

Single Pneumatic  
SIEP211

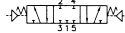


Double Pneumatic  
SIEP220

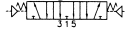


## 5Port 3Position Pneumatic Valve

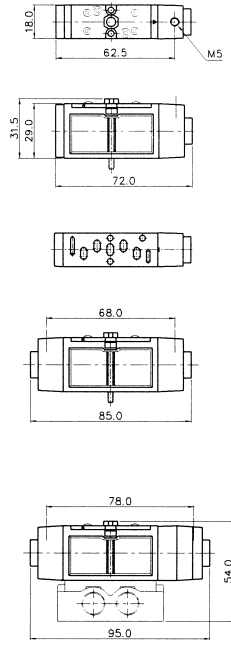
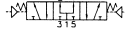
Closed Center  
SIEP233



Exhaust Center  
SIEP243

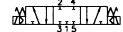


Pressure Center  
SIEP253

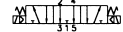


## 5Port 3Position Solenoid Valve

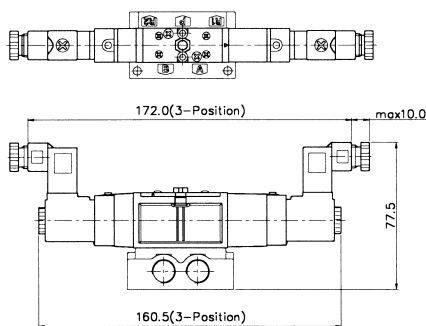
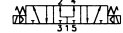
Closed Center  
SIE233-IP-SC1-CN1-\*\*\*



Exhaust Center  
SIE243-IP-SC1-CN1-\*\*\*



Pressure Center  
SIE253-IP-SC1-CN1-\*\*\*

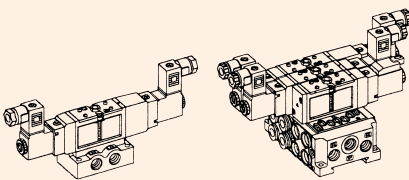


## Sub Base Ordering Code

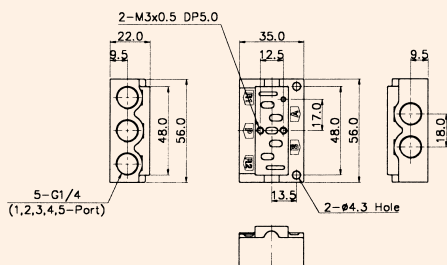
Sub Base Series	Port & Thread	Function
<b>SIB2</b>	0 None	S Single Station Sub Base, 1/4 Port Without Pilot Ports
SIE200 Solenoid Valve	1 G	SP Single Station Sub Base, 1/4 Port With Pilot Ports
	2 NPT	DB Double Modular Sub Base, 1/8 Port Without Pilot Ports
		DC6 Double Modular Sub Base #6 One-Touch Fitting
		E End Cover, 1/8 Port
		EB End Blanking Cover

## SIB20 SINGLE, DOUBLE SUB BASE

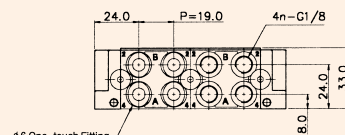
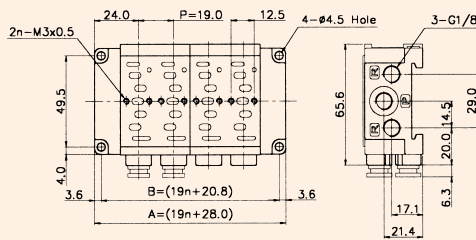
(SIE200 Solenoid & Pneumatic Valve Use Sub Base)



### Single Station Sub Base Dimension



### Double Modular Sub Base Dimension



DOUBLE MODULAR SUB BASE DIMENSION		n = STATION				
ITEM	n	2	4	6	8	10
B		58.8	96.8	134.8	172.8	210.8
A		66.0	104.0	142.0	180.0	218.0

### Ordering Code

SIB20-BLK Blanking Plate (Material: STS304)  
Manifold Gasket (Material: NBR)

### Ordering Code

SIB21-E End Cover, 1/8 (Material: Al)

### Ordering Code

SIB20-EB End Blanking Cover (Material: Al)

### Ordering Code

SIB21-DB Double Modular Sub Base, 1/8 (Material: Al)

### Ordering Code

SIB20-DC6 Double Modular Sub Base #6 One-touch Fitting (Material: Al)