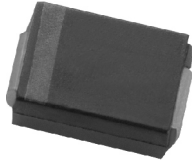


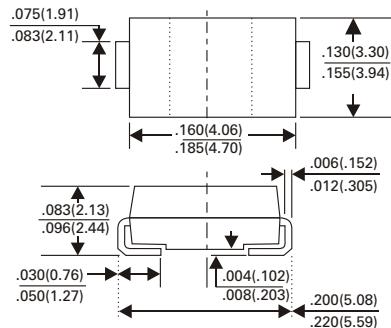
SK52B thru SK520B

SURFACE MOUNT SCHOTTKY BARRIER RECTIFIER

VOLTAGE - 20 TO 200 VOLTS CURRENT - 5.0 AMPERES



SMB/DO-214AA



Dimensions in inches and (millimeters)

FEATURES

- For Surface Mounted Applications
- Low profile package
- Built-in strain relief
- Easy Pick And Place
- Plastic Material Used Carries Underwriters Laboratory Classification 94 V-0
- Extremely Low VF
- Majority Carrier Conduction
- High temperature soldering guarantee 250°C/10 seconds at terminals

MECHANICAL DATA

Case : Molded plastic
 Terminals : Solder plated
 Polarity : Indicated by cathode band
 Weight : 0.064 gram

MAXIMUM RATINGS AND ELECTRICAL CHARACTERISTICS

Ratings at 25°C ambient temperature unless otherwise specified
 Single phase, half wave, 60Hz, resistive or inductive load
 For capacitive load, derate current by 20%

	SYMBOL	SK52B	SK53B	SK54B	SK55B	SK56B	SK58B	SK59B	SK510B	SK515B	SK520B	UNITS
Maximum Repetitive Peak Reverse Voltage	V_{RRM}	20	30	40	50	60	80	90	100	150	200	Volts
Maximum RMS Voltage	V_{RMS}	14	21	28	35	42	56	63	70	105	140	Volts
Maximum DC Blocking Voltage	V_{DC}	20	30	40	50	60	80	90	100	150	200	Volts
Maximum Average Forward Rectified Current at T_L (See Figure 1)	$I_{(AV)}$	5.0										Amps
Peak Forward Surge Current 8.3ms Single Half Sine-Wave Superimposed on Rated Load (JEDEC Method)	I_{FSM}	120										Amps
Maximum Instantaneous Forward Voltage at 5.0A (Note 1)	V_F	0.5		0.7		0.85		0.9				Volts
Maximum DC Reverse Current (NOTE 1) $T_A=25^\circ C$ at Rated DC Blocking Voltage $T_A=100^\circ C$	I_R	0.5 20										mA
Typical junction capacitance	C_J	300		210		170		110				pF
Maximum Thermal Resistance (NOTE 2)	$R_{\theta JL}$ $R_{\theta JA}$	35 95										$^\circ C / W$
Operating at Storage Temperature Range T_J	T_J	-55 to +125										$^\circ C$
Storage Temperature Range	T_{STG}	-55 to +150										$^\circ C$

NOTES :

1. Measured at 1.0MHz and Applied Reverse Voltage OF 4.0V
2. P.C.B Mounted 0.55" x 0.55" (14x14mm) 0.013mm Thick Copper Pad Areas
3. SMA Package Suffix "A", SMB Package Suffix "B", SMC NO Suffix

SK52B thru SK520B

SURFACE MOUNT SCHOTTKY BARRIER RECTIFIER

RATINGS AND CHARACTERISTIC CURVES SK52B THRU SK520B

FIG. 1-TYPICAL FORWARD CURRENT DERATING CURVE

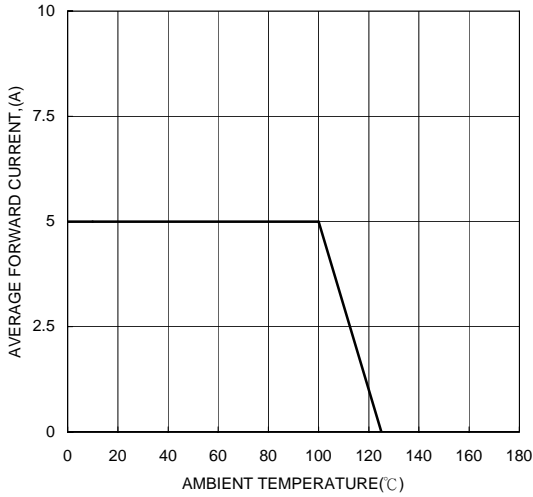


FIG. 2-TYPICAL FORWARD CHARACTERISTICS

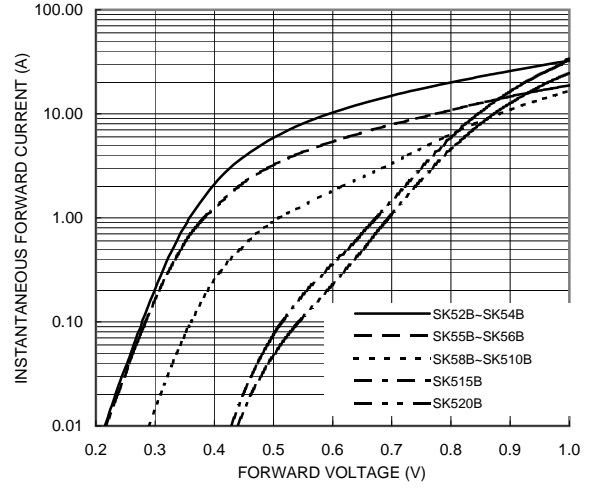


FIG. 3-MAXIMUM NON-REPETITIVE FORWARD SURGE CURRENT

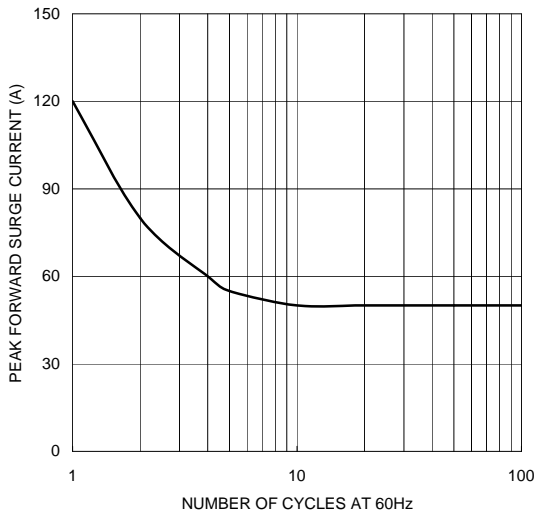


FIG. 4-TYPICAL REVERSE CHARACTERISTICS

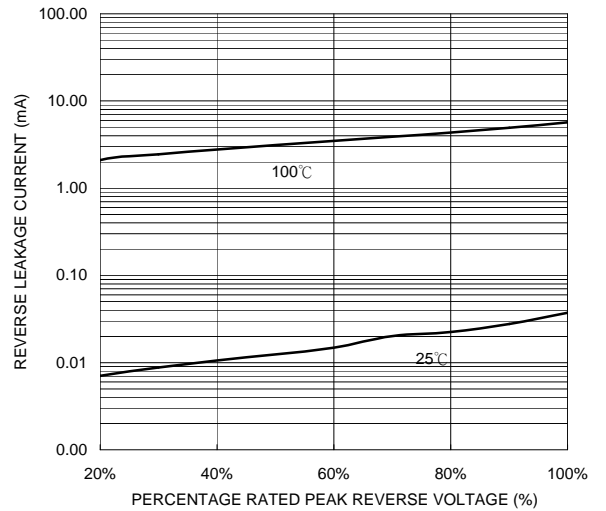


FIG. 5-TYPICAL JUNCTION CAPACITANCE

