

Features

Preset Charge Voltage with 1% Accuracy
Pre-Charging, the Charge Current is adjustable

Ideal for Dual-Cell 8.4V Li-Ion Batteries
Constant -Current Charging, the Charge Current is adjustable

Constant-Voltage (Charging) ±

Constant-Current/Constant-Voltage
Charging with Temperature Monitoring
Automatic Recharge

Double LEDs Charge Status Indication

Available in MSOP-8L Package

Applications

Charger for Li-Ion Coin Cell Batteries

Portable MP3 Players, Wireless Headsets

Bluetooth Applications

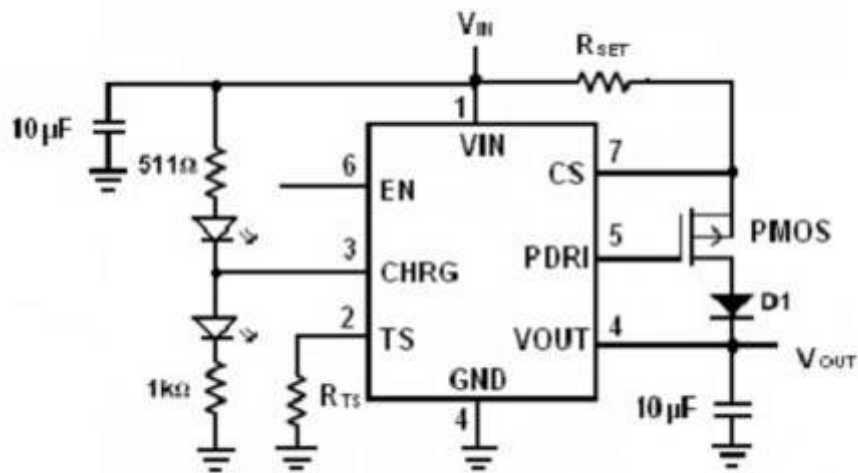
Multifunction Wristwatches

Description

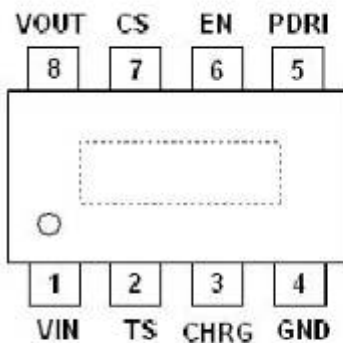
The ITE1056 is a highly advanced complete constant-current/ constant voltage linear charger for cell lithium-ion batteries. Its package and low external component count make the ITE1056 ideally suited for portable applications. The charge current can be programmed externally with a single resistor. ITE1056 determines the charge mode by detecting the battery voltage: Pre-charge, constant current charging, constant voltage charging. The charge current of pre-charging and constant -current charging is adjustable. The ITE1056 is monitored by temperature monitor during the constant-current and constant-voltage charging. There are two LEDs indicate the charge mode.

The ITE1056 charger converters are available in the MSOP-8L packages (or upon request).

Typical Application



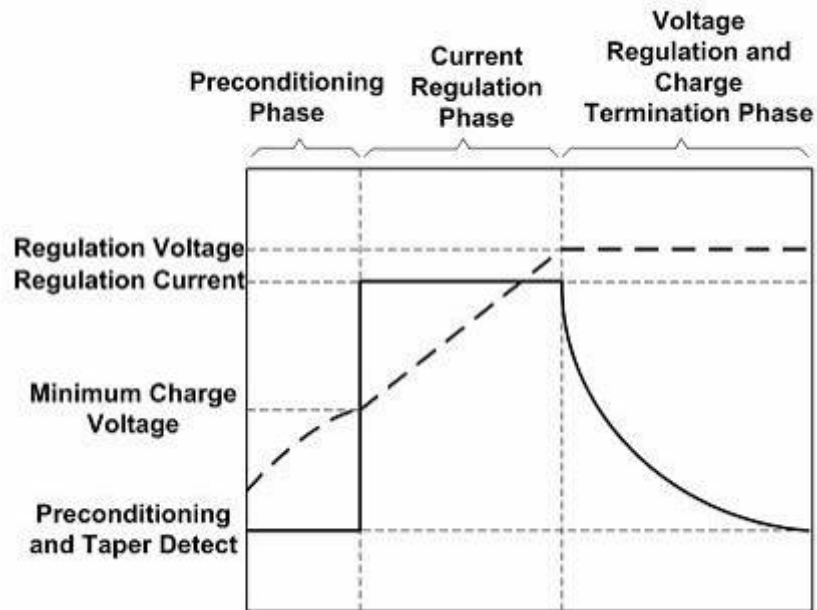
Pin Assignment



MSOP-8L

PIN NUMBER MSOP-8L	PIN NAME	DESCRIPTION
1	VIN	Positive Input Supply Voltage.
2	TS	Temperature Sense
3	CHRG	Open-Drain Charge Status Output
4	GND	Ground
5	PDRI	Charge Current Monitor and Shutdown Pin
6	EN	ON/OFF Control (High Enable)
7	CS	Charge Current Program
8	VOUT	Charge Current Output

Typical Charge Profile



Absolute Maximum Ratings

Input Supply Voltage (VIN)	-0.3V to 18V
TS CHRG1 CHRG2 PDRI CS	-0.3V to VIN + 0.3V
Maximum Junction Temperature	125
Operating Ambient Temperature Range.....	-40 to 85
Storage Temperature Range	-65 °C to 125
Lead Temperature (Soldering, 10 sec).....	300 °C