

## SURFACE MOUNT SCHOTTKY BARRIER RECTIFIERS

**SL22--SL210**

### FEATURES

- Low leakage
- Low forward voltage drop
- High current capability
- For surface mounted applications
- Easily cleaned with Alcohol, Isopropnol and similar solvents



### MECHANICAL DATA

- Case: SMB molded plastic body
- Terminals: Solder plated, solderable per MIL-STD-202, Method 208
- Polarity: Color band denotes cathode end

### Maximum Ratings (@TA = 25°C unless otherwise specified)

Characteristic	Symbol	SL22	SL23	SL24	SL245	SL25	SL26	SL28	SL29	SL210	UNITS
Maximum repetitive peak reverse voltage	$V_{RRM}$	20	30	40	45	50	60	80	90	100	V
Maximum RMS voltage	$V_{RWS}$	14	21	28	31.5	35	42	56	63	70	V
Maximum DC blocking voltage	$V_{DC}$	20	30	40	45	50	60	80	90	100	V
Maximum average forward rectified current at $T_L=90^\circ\text{C}$	$I_{F(AV)}$	2.0									A
Peak forward surge current 8.3ms single half-sine-wave	$I_{FSM}$	50									A

### Thermal Characteristics

Characteristic	Symbol	SL22	SL23	SL24	SL245	SL25	SL26	SL28	SL29	SL210	UNITS
Operating temperature range	$T_J$	-55 ---- +125						-55 ---- +150			°C
Storage temperature range	$T_{STG}$	-55 ---- +150									°C

### Electrical Characteristics (@TA = 25°C unless otherwise specified)

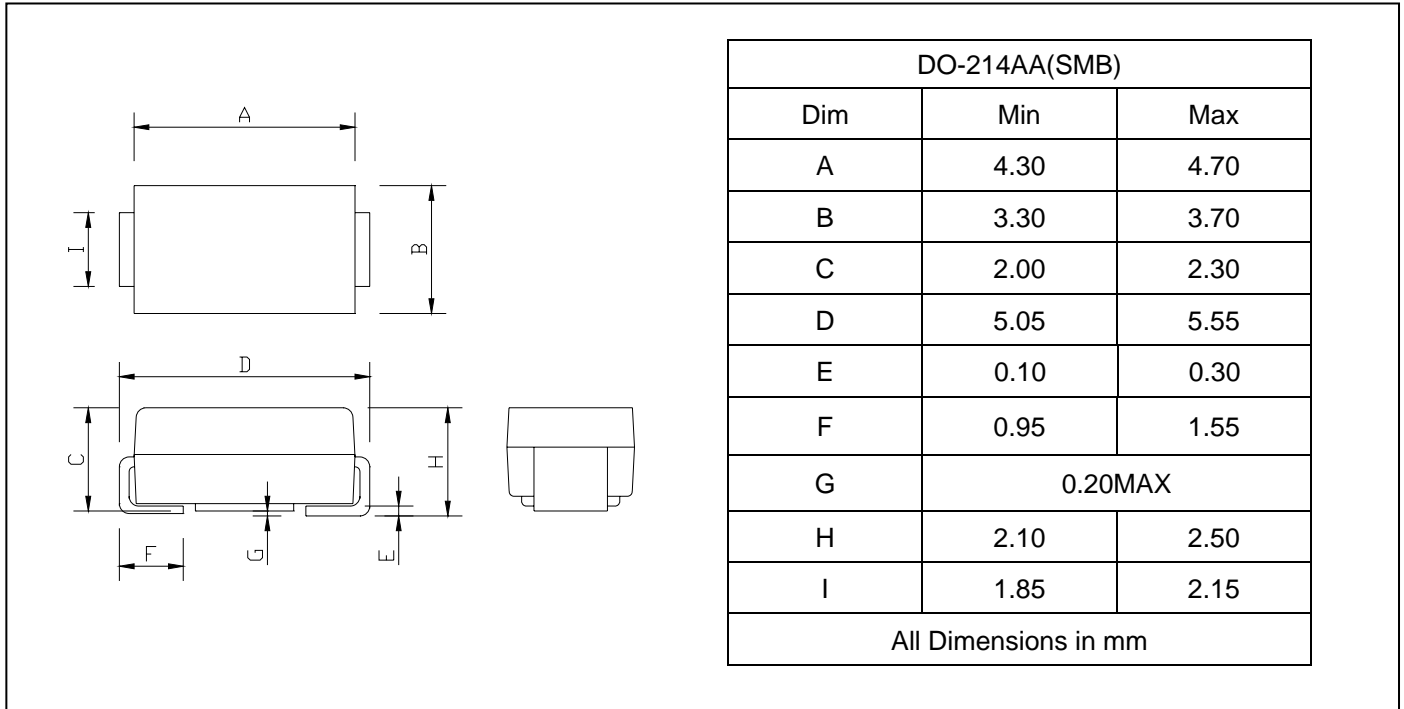
Characteristic	Symbol	SL22	SL23	SL24	SL245	SL25	SL26	SL28	SL29	SL210	UNITS	
Maximum instantaneous forward voltage at $I_{FM}=2.0\text{A}$	$V_F$	0.45				0.58		0.63			V	
Maximum DC reverse current $T_J=25^\circ\text{C}$ at rated DC blocking voltage $T_J=125^\circ\text{C}$	$I_R$	0.5					20					mA



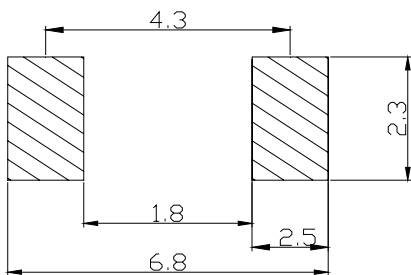
**SURFACE MOUNT SCHOTTKY  
BARRIER RECTIFIERS**

**SL22--SL210**

**PACKAGE OUTLINE DIMENSIONS**



**SOLDERING FOOTPRINT**



Unit : mm

**PACKAGE INFORMATION**

Device	Package	Shipping
SL22--SL210	DO-214AA(SMB)	3000/Tape&Reel