

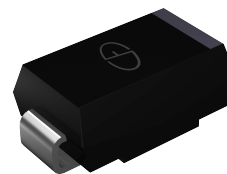


SL22B thru SL210B

Surface Mount Schottky Rectifier
Reverse Voltage 20 - 100V Forward Current 2A

FEATURES

- Ideal for automated placement
- Low forward voltage drop
- Low leakage current
- Meets environmental standard MIL-S-19500D
- Moisture sensitivity: level 1, per J-STD-020
- Solder dip 275 °C, 10s
- Compliant to RoHS Directive 2002/95/EC and in accordance to WEEE 2002/96/EC



Package: DO-214AA (SMB)

APPLICATIONS

For use in general purpose rectification of lighting, power supplies, inverters, converters and freewheeling diodes for consumer, automotive and telecommunication.



PRIMARY CHARACTERISTICS	
$I_{F(AV)}$	2 A
V_{RRM}	20 V to 100 V
I_{FSM}	45A
V_F	0.42V , 0.47V , 0.72V
$T_J \text{ max.}$	125 °C , 150°C

MECHANICAL DATA

Case: DO-214AA, molded epoxy body , Epoxy meets UL 94V-0 flammability rating

Terminals: Matte tin plated leads, solderable per J-STD-002 and JESD22B-106

Polarity: Laser Band Denotes Cathode Band

MAXIMUM RATINGS (TA = 25 °C unless otherwise noted)											
PARAMETER	SYMBOL	SL22B	SL23B	SL24B	SL25B	SL26B	SL27B	SL28B	SL29B	SL210B	UNIT
Maximum repetitive peak reverse voltage	V_{RRM}	20	30	40	50	60	70	80	90	100	V
Maximum RMS voltage	V_{RMS}	14	21	28	35	42	49	56	63	70	V
Maximum DC blocking voltage	V_{DC}	20	30	40	50	60	70	80	90	100	V
Maximum average forward rectified current at TL (See Fig.1)	$I_{F(AV)}$	2									A
Peak forward surge current 8.3 ms single half sine-wave superimposed on rated load	I_{FSM}	45									A
Operating junction temperature range	T_J	- 55 to + 125				- 55 to + 150					°C
Storage temperature range	T_{STG}	- 55 to + 150									°C



SL22B thru SL210B

Surface Mount Schottky Rectifier

Reverse Voltage 20 - 100V Forward Current 2A

ELECTRICAL CHARACTERISTICS (TA = 25 °C unless otherwise noted)												
PARAMETER	TEST CONDITIONS	SYMBOL	SL22B	SL23B	SL24B	SL25B	SL26B	SL27B	SL28B	SL29B	SL210B	UNIT
Maximum instantaneous forward voltage	IF=2A	VF	0.42			0.47		0.72				V
Maximum DC reverse current at rated DC blocking voltage	TA=25	IR	0.2			0.15						mA
	TA=100		20			TBD						
Typical junction capacitance	4.0 V, 1 MHz	CJ	175									pF

THERMAL CHARACTERISTICS (TA = 25 °C unless otherwise noted)											
PARAMETER	SYMBOL	SL22B	SL23B	SL24B	SL25B	SL26B	SL27B	SL28B	SL29B	SL210B	UNIT
Maximum thermal resistance	RθJA (1)	72									°C/W
	RθJT (2)	22									

Notes: (1) Thermal resistance from junction to ambient, 0.276x 0.276 inch (7.0x7.0mm) copper pads to each terminal

(2) Thermal resistance from junction to terminal, 0.276x0.276 inch (7.0x7.0mm) copper pads to each terminal

RATINGS AND CHARACTERISTICS CURVES

(TA = 25 °C unless otherwise noted)

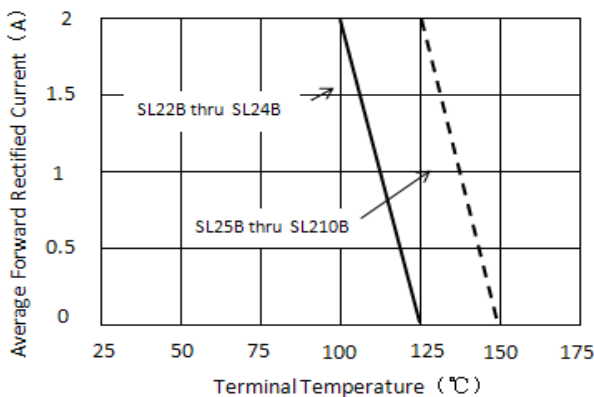


Figure 1. Forward Current Derating Curve

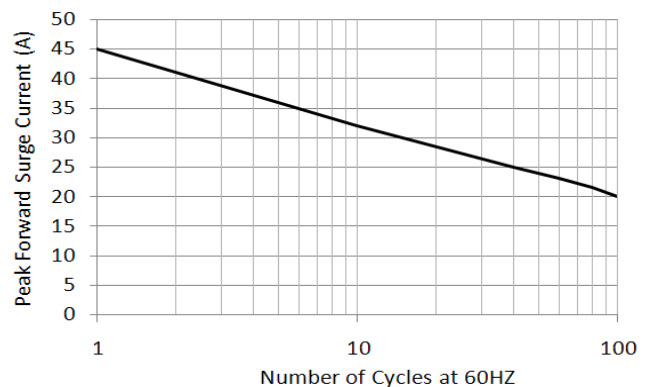


Figure 2. Maximum Non-repetitive Peak Forward Surge Current

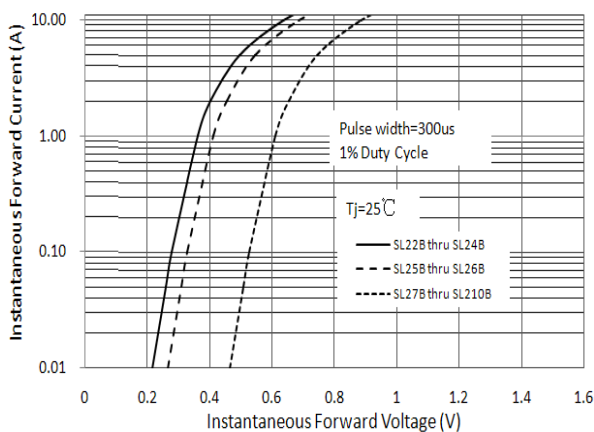


Figure 3. Typical Instantaneous Forward Characteristics

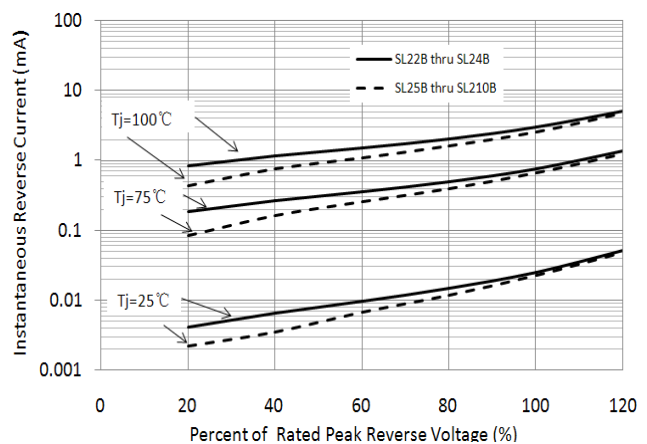


Figure 4. Typical Reverse Characteristics



SL22B thru SL210B

Surface Mount Schottky Rectifier

Reverse Voltage 20 - 100V Forward Current 2A

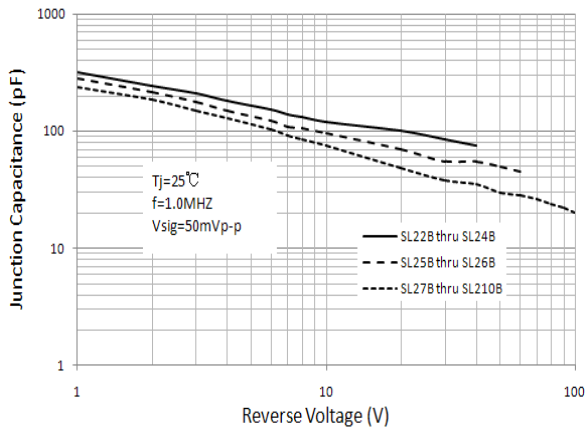


Figure 5. Typical Junction Capacitance

PACKAGE OUTLINE DIMENSIONS in inches (millimeters)

