

**SURFACE MOUNT SCHOTTKY  
BARRIER RECTIFIERS**

**SL22FA--SL210FA**

**FEATURES**

- Low leakage
- Low forward voltage drop
- High current capability
- For surface mounted applications
- Easily cleaned with Alcohol, Isopropnol and similar solvents



**MECHANICAL DATA**

- Case: SMAFL molded plastic body
- Terminals: Solder plated, solderable per MIL- STD-202,Method 208
- Polarity: Color band denotes cathode end

**Maximum Ratings** (@TA = 25°C unless otherwise specified)

Characteristic	Symbol	SL22FA	SL23FA	SL24FA	SL25FA	SL26FA	SL28FA	SL29FA	SL210FA	UNITS
Marking code		L22	L23	L24	L25	L26	L28	L29	L2AF	
Maximum repetitive peak reverse voltage	$V_{RRM}$	20	30	40	50	60	80	90	100	V
Maximum RMS voltage	$V_{RWS}$	14	21	28	35	42	56	63	70	V
Maximum DC blocking voltage	$V_{DC}$	20	30	40	50	60	80	90	100	V
Maximum average forward rectified current at $T_L=90^\circ\text{C}$	$I_{F(AV)}$	2.0								A
Peak forward surge current 8.3ms single half-sine-wave	$I_{FSM}$	50								A

**Thermal Characteristics**

Characteristic	Symbol	SL22FA	SL23FA	SL24FA	SL25FA	SL26FA	SL28FA	SL29FA	SL210FA	UNITS	
Operating temperature range	$T_J$	-55 ---- +125					-55 ---- +150				$^\circ\text{C}$
Storage temperature range	$T_{STG}$	-55 ---- +150									$^\circ\text{C}$

**Electrical Characteristics** (@TA = 25°C unless otherwise specified)

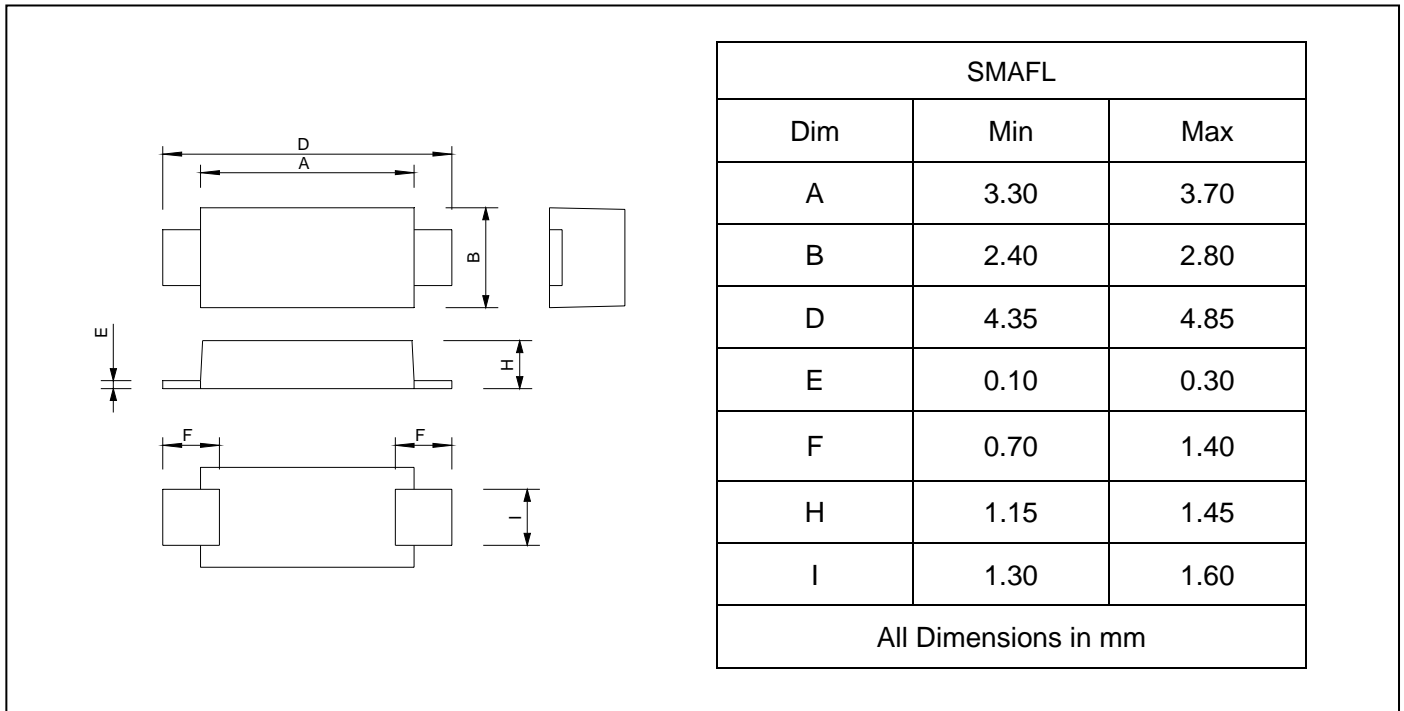
Characteristic	Symbol	SL22FA	SL23FA	SL24FA	SL25FA	SL26FA	SL28FA	SL29FA	SL210FA	UNITS	
Maximum instantaneous forward voltage at $I_{FM}=2.0\text{A}$	$V_F$	0.45			0.58		0.63			V	
Maximum DC reverse current $T_J=25^\circ\text{C}$ at rated DC blocking voltage $T_J=125^\circ\text{C}$	$I_R$	0.5				20					m A



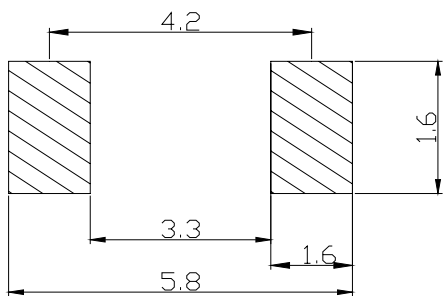
**SURFACE MOUNT SCHOTTKY  
BARRIER RECTIFIERS**

**SL22FA--SL210FA**

**PACKAGE OUTLINE DIMENSIONS**



**SOLDERING FOOTPRINT**



Unit : mm

**PACKAGE INFORMATION**

Device	Package	Shipping
SL22FA--SL210FA	SMAFL	10000/Tape&Reel