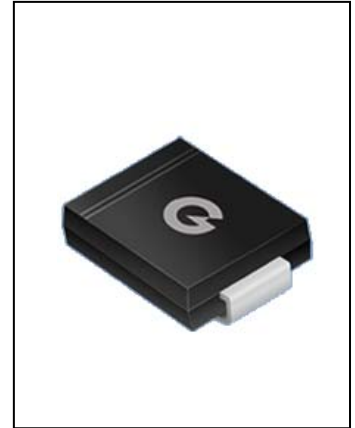


**SURFACE MOUNT SCHOTTKY  
BARRIER RECTIFIERS**
**SL32--SL310**
**FEATURES**

- Low leakage
- Low forward voltage drop
- High current capability
- For surface mounted applications
- Easily cleaned with Alcohol, Isopropnol and similar solvents


**MECHANICAL DATA**

- Case: SMC molded plastic body
- Terminals: Solder plated, solderable per MIL-STD-202, Method 208
- Polarity: Color band denotes cathode end

**Maximum Ratings** (@TA = 25°C unless otherwise specified)

Characteristic	Symbol	SL32	SL33	SL34	SL35	SL36	SL38	SL39	SL310	UNITS
Maximum repetitive peak reverse voltage	$V_{RRM}$	20	30	40	50	60	80	90	100	V
Maximum RMS voltage	$V_{RWS}$	14	21	28	35	42	56	63	70	V
Maximum DC blocking voltage	$V_{DC}$	20	30	40	50	60	80	90	100	V
Maximum average forward rectified current at $T_L=90^\circ\text{C}$	$I_{F(AV)}$	3.0								A
Peak forward surge current 8.3ms single half-sine-wave	$I_{FSM}$	100								A

**Thermal Characteristics**

Characteristic	Symbol	SL32	SL33	SL34	SL35	SL36	SL38	SL39	SL310	UNITS
Operating temperature range	$T_J$	-55 ---- +125					-55 ---- +150			$^\circ\text{C}$
Storage temperature range	$T_{STG}$	-55 ---- +150								$^\circ\text{C}$

**Electrical Characteristics** (@TA = 25°C unless otherwise specified)

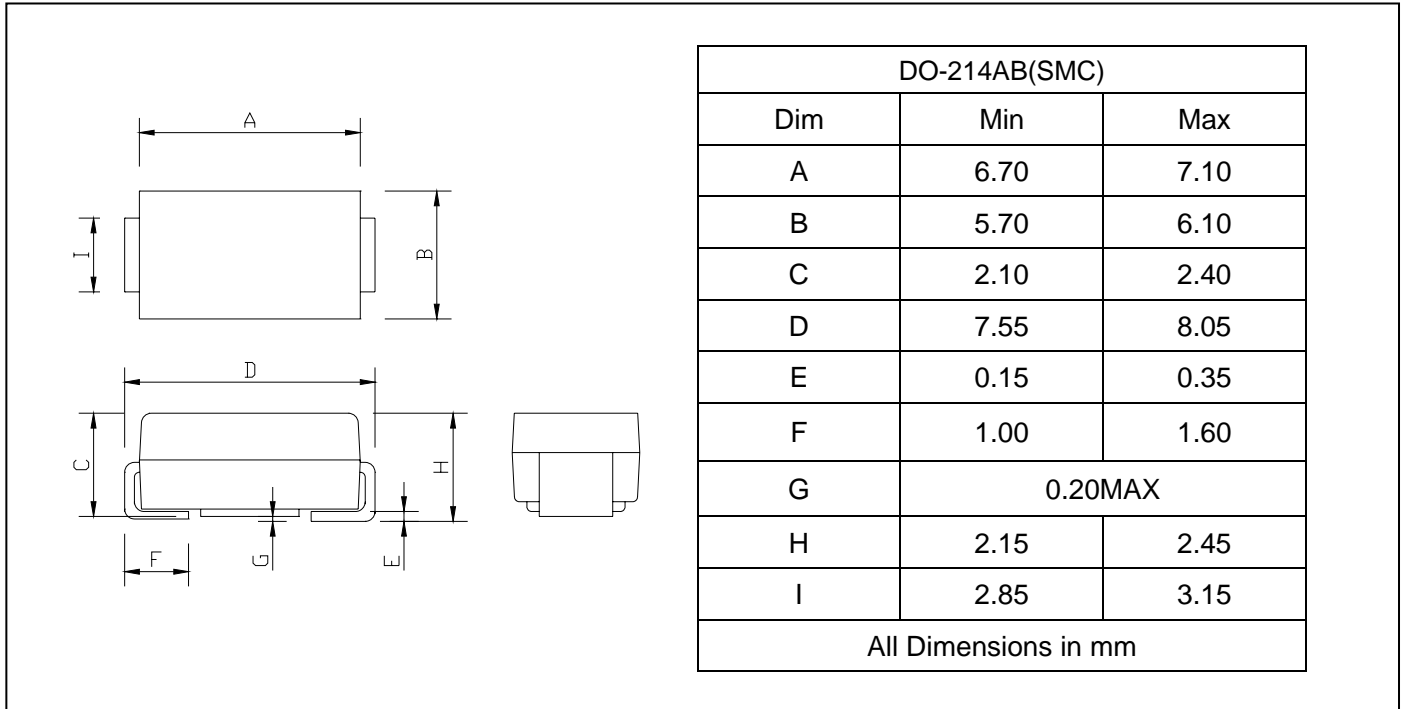
Characteristic	Symbol	SL32	SL33	SL34	SL35	SL36	SL38	SL39	SL310	UNITS	
Maximum instantaneous forward voltage at $I_{FM}=3.0\text{A}$	$V_F$	0.45			0.58		0.63			V	
Maximum DC reverse current $T_J=25^\circ\text{C}$ at rated DC blocking voltage $T_J=125^\circ\text{C}$	$I_R$					0.5					m A
						20					



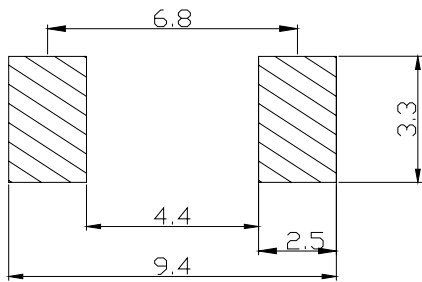
**SURFACE MOUNT SCHOTTKY  
BARRIER RECTIFIERS**

**SL32--SL310**

**PACKAGE OUTLINE DIMENSIONS**



**SOLDERING FOOTPRINT**



Unit : mm

**PACKAGE INFORMATION**

Device	Package	Shipping
SL32--SL310	DO-214AB(SMC)	3000/Tape&Reel