

SLC-25-6-X-TXL Optical Fibre Channel -- +3.3V Small Form Factor (SFF) Transceiver -- 1.0625 GBaud



Features

- 1.0625 Gbps Fibre Channel Performance
- Die Cast Metal Housing
- TTL Signal Detect Output
- Transmitter Disable Input
- Low profile fits Mezzanine Card Applications
- 50Ω AC coupled LVPECL Inputs/Outputs
- Single +3.3V Power Supply
- Wave Solderable / Aqueous Washable
- Class 1 Laser Safety Compliant
- UL 1950 Approved

PRODUCT OVERVIEW

The SLC-25-6-X-TXL Small Form Factor (SFF) optical transceivers are high performance integrated duplex data links for bi-directional communication over multimode or single mode fiber. The SLC-25-6 module is specifically designed to be used in multimode or single mode Fibre Channel applications. The SLC-25-6 transceivers are provided with the LC receptacle which is compatible with the industry standard LC connector. The Stratos Lightwave SFF transceivers measure 0.532 inches in width. These transceivers provide double port densities by fitting twice the number of transceivers into the same board space as a 1x9 transceiver. This saves on system costs and can reduce overall design time. The SLC-25-6-X-TXL operates at +3.3V.

This optoelectronic transceiver module is a class 1 laser product compliant with FDA Radiation Performance Standards, 21 CFR Subchapter J. This component is also class 1 laser compliant according to International Safety Standard IEC-825-1.

SHORT WAVELENGTH LASER

The use of short wavelength VCSELs (Vertical Cavity Surface-Emitting Laser) and high volume production processes has resulted in a low cost, high performance product available in various data transfer rates up to 1.0625 GBaud. The Stratos 1x Fiber Channel 850nm SLC-25-6-1-TXL is compatible with legacy 850nm CD laser Fiber Channel transmitter.

LONG WAVELENGTH LASER

The SLC-25-6-2-TXL is provided with single mode optics. The 1300 nm laser provides highly reliable single mode communications which meets or exceeds the Fibre Channel distance requirements.

ORDERING INFORMATION

SLC - 25 - 6 - X - T X L

+3.3V POWER SUPPLY

GROUND CLIP

N - No Ground Clip

I - Individual Mount (.600 Center)

G - Gang Mount (.550 Center)

SIGNAL DETECT

T - TTL Output

WAVELENGTH

1 - 850 nm (multimode)

2 - 1300 nm (single mode)5km

2M - 1300nm (single mode)10km

2L - 1300nm (single mode) 20km

PROTOCOL

6 - Fibre Channel, 1.0625GBaud

3 - ATM OC-12, 622MBaud

4 - Gigabit Ethernet, 1.25GBaud

7 - ATM OC-48, 2.488GBaud

8 - Fibre Channel, 2.125GBaud



Optoelectronic Products

7444 West Wilson Avenue • Chicago, IL 60656
708/867-9600 • 800/323-6858 • Fax: 708/867-0996
email:optoinfo@stratoslightwave.com
http://www.stratoslightwave.com

ABSOLUTE MAXIMUM RATINGS

PARAMETER	SYMBOL	MIN	MAX	UNITS	NOTES
Storage Temperature	Tstg	-40	85	°C	
Soldering Temperature			260	°C	10 seconds on leads only
Supply Voltage	Vcc		6.0	V	Vcc - ground
Data AC Voltage	Tx+, Tx-		2.6	Vpp	Differential
Data DC Voltage	Tx+, Tx-	-10	10	Vpk	V (Tx+ or Tx-) - ground

SLC-25-6-X-TXL Optical Fibre Channel -- +3.3V Small Form Factor (SFF) Transceiver -- 1.0625 GBaud



RECOMMENDED OPERATING CONDITIONS

PARAMETER	SYMBOL	MIN	TYP	MAX	UNITS	NOTES
Ambient Operating Temperature	Ta	0		70	°C	
Supply Voltage	Vcc	3.0	3.3	3.6	VDC	
Baud Rate	BRate		1.0625		GBaud	±100ppm

MODULE SPECIFICATIONS - ELECTRICAL

Ta = 25° C, Vcc = +3.3 V

PARAMETER	SYMBOL	MIN	TYP	MAX	UNITS	NOTES
Supply Current	Icc		160	180	mA	Ta = 25°C, Vcc = 3.3 V
	Icc			200	mA	0° C < Ta < 70°C, 3.0 V < Vcc < 3.6V
TRANSMITTER						
PECL Input (Single Ended)		350	720	1250	mVpp	AC coupled inputs
PECL Input (Differential)		700	1440	2500	mVpp	AC coupled inputs
Input Impedance	Zin		50		ohms	Rin > 100 kohms @ DC
TX_DISABLE Input Voltage - High	VIH	2.0		Vcc+0.3	V	
TX_DISABLE Input Voltage - Low	UIL	0		0.8	V	
RECEIVER						
PECL Output (Single Ended)		300	750	930	mVpp	AC coupled outputs
PECL Output (Differential)		600	1500	1860	mVpp	AC coupled outputs
Total Jitter ²	TJ			170	psec	
TTL Signal Detect Output - Low				0.5	V	IOL = -1.6 mA, 1 TTL Unit Load
TTL Signal Detect Output - High		2.4	3.0		V	IOH = 40µA, 1 TTL Unit Load

PERFORMANCE SPECIFICATIONS - OPTICAL 850 nm Laser Multimode

Ta = 25° C, Vcc = +3.3 V

PARAMETER	SYMBOL	MIN	TYP	MAX	UNITS	NOTES
FIBER LENGTH						
50 µm Core Diameter MMF		550	1000		m	BER < 1.0E-12 @ 1.0625 GBaud
62.5 µm Core Diameter MMF		300 ¹	500		m	BER < 1.0E-12 @ 1.0625 GBaud
TRANSMITTER						
Optical Transmit Power	Popt	-10		-4	dBm	average @ 850 nm
Optical Center	λ	830	850	860	nm	
Spectral Width	Δλ			1.0	nm	RMS
Optical Modulation Amplitude	OMA	160			µW	pk-pk
Relative Intensity Noise	RIN			-116	dB/Hz	
Total Jitter ²	TJ			210	psec	
Output Rise, Fall Time	t _R , t _F			300	psec	20 - 80% values, measured unfiltered
RECEIVER						
Optical Input	λ	770		860	nm	
Optical Input Power	Pr	-17		0	dBm	BER < 1.0E-12
Optical Modulation Amplitude	OMA	31			µW	pk-pk
Optical Return Loss	ORL	12	30		dB	
Signal Detect - Asserted	Pa			-17	dBm	measured on transition - low to high
Signal Detect - Deasserted	Pd	-29			dBm	measured on transition - high to low
Signal Detect - Hysteresis	Pa - Pd		1.5	5.0	dB	

Note¹ - This is the link length for at least 95% of the installed fiber base.

Note² - Measured with 2⁷ - 1 Pseudorandom bit sequence.

SLC-25-6-X-TXL Optical Fibre Channel -- +3.3V Small Form Factor (SFF) Transceiver -- 1.0625 GBaud



SLC-25-6-2-TXL PERFORMANCE SPECIFICATIONS - OPTICAL

Ta=25°C, Vcc= +3.3V

PARAMETER	SYMBOL	MIN	TYP	MAX	UNITS	NOTES
FIBER LENGTH						
9.0 µm Core Diameter SMF		5	10		km	BER < 1.0E-12 @ 1.0625 GBaud
TRANSMITTER						
Optical Center	λ	1270	1310	1355	nm	
Optical Modulation Amplitude	OMA	200			µW	pk-pk
RMS Spectral Width	$\Delta\lambda$			4	nm	RMS
Optical Transmit Power	Popt	-11		-3	dBm	average @ 1310 nm
RECEIVER						
Optical Input Power	Pr	-19		-3	dBm	average power for BER < 1.0E-12
Optical Modulation Amplitude	OMA	16			µW	pk-pk
Optical Return Loss	ORL	12	30		dB	
Signal Detect - Asserted	Pa			-19	dBm	measured on transition - low to high
Signal Detect - Deasserted	Pd	-29			dBm	measured on transition - high to low
Signal Detect - Hysteresis	Pa - Pd		1.5	5.0	dB	

SLC-25-6-2M-TXL PERFORMANCE SPECIFICATIONS - OPTICAL

Ta=25°C, Vcc= +3.3V

PARAMETER	SYMBOL	MIN	TYP	MAX	UNITS	NOTES
FIBER LENGTH						
9.0 µm Core Diameter SMF		10	20		km	BER < 1.0E-12 @ 1.0625 GBaud
TRANSMITTER						
Optical Center	λ	1285	1310	1335	nm	
Optical Modulation Amplitude	OMA	200			µW	pk-pk
RMS Spectral Width	$\Delta\lambda$			3	nm	RMS
Optical Transmit Power	Popt	-9.5		-3	dBm	average @ 1310 nm
RECEIVER						
Optical Input Power	Pr	-20		-3	dBm	average power for BER < 1.0E-12
Optical Modulation Amplitude	OMA	16			µW	pk-pk
Optical Return Loss	ORL	12	30		dB	
Signal Detect - Asserted	Pa			-20	dBm	measured on transition - low to high
Signal Detect - Deasserted	Pd	-29			dBm	measured on transition - high to low
Signal Detect - Hysteresis	Pa - Pd		1.5	5.0	dB	

SLC-25-6-2L-TXL PERFORMANCE SPECIFICATIONS - OPTICAL

Ta=25°C, Vcc= +3.3V

PARAMETER	SYMBOL	MIN	TYP	MAX	UNITS	NOTES
FIBER LENGTH						
9.0 µm Core Diameter SMF		20	25		km	BER < 1.0E-12 @ 1.0625 GBaud
TRANSMITTER						
Optical Center	λ	1300	1310	1320	nm	
RMS Spectral Width	$\Delta\lambda$			2	nm	RMS
Optical Transmit Power	Popt	-8		-3	dBm	average @ 1310 nm
Optical Modulation Amplitude	OMA	200			µW	pk-pk
RECEIVER						
Optical Input Power	Pr	-21		-3	dBm	average power for BER < 1.0E-12
Optical Modulation Amplitude	OMA	16			µW	pk-pk
Optical Return Loss	ORL	12	30		dB	
Signal Detect - Asserted	Pa			-21	dBm	measured on transition - low to high
Signal Detect - Deasserted	Pd	-29			dBm	measured on transition - high to low
Signal Detect - Hysteresis	Pa - Pd		1.5	5.0	dB	

SLC-25-6-X-TXL Optical Fibre Channel -- +3.3V Small Form Factor (SFF) Transceiver -- 1.0625 GBaud



TERMINATION CIRCUITS

Inputs to the SLC-25 transmitter are AC coupled and internally terminated through 50 ohms to AC ground. These transceivers can operate with PECL logic level. The input signal must have at least a 350 mV peak-to-peak (single ended) signal swing. Output from the receiver section of the module is also AC coupled and is expected to drive into a 50 ohm load. Different termination strategies may be required depending on the particular Serializer/Deserializer chip set used.

The SLC-25 product family is designed with AC coupled data inputs and outputs to provide the following advantages:

- Close positioning of SERDES with respect to transceiver; allows for shorter line lengths and at gigabit speeds reduces EMI.
- Minimum number of external components.
- Internal termination reduces the potential for unterminated stubs which would otherwise increase jitter and reduce transmission margin.

Subsequently, this affords the customer the ability to optimally locate the SERDES as close to the SLC-25 as possible and save valuable real estate on PCI cards and other small circuit assemblies. At gigabit rates this can provide a significant advantage resulting in better transmission performance and accordingly better signal integrity.

AC coupling allows the Stratos Lightwave SLC-25 to be applied across a wider range of applications without modification. This benefits users in terms of enhanced RF performance, reduced component count, tighter layout and fewer design problems.

Figure 1 illustrates the recommended transmit and receive data line terminations and Figure 2 describes an alternative termination approach. Figure 3 illustrates a Thevenin equivalent 50 ohm termination circuit for the SERDES receiver input data lines, which require a +3.3V PECL termination. Other equivalent circuits can be readily calculated for other bias voltages.

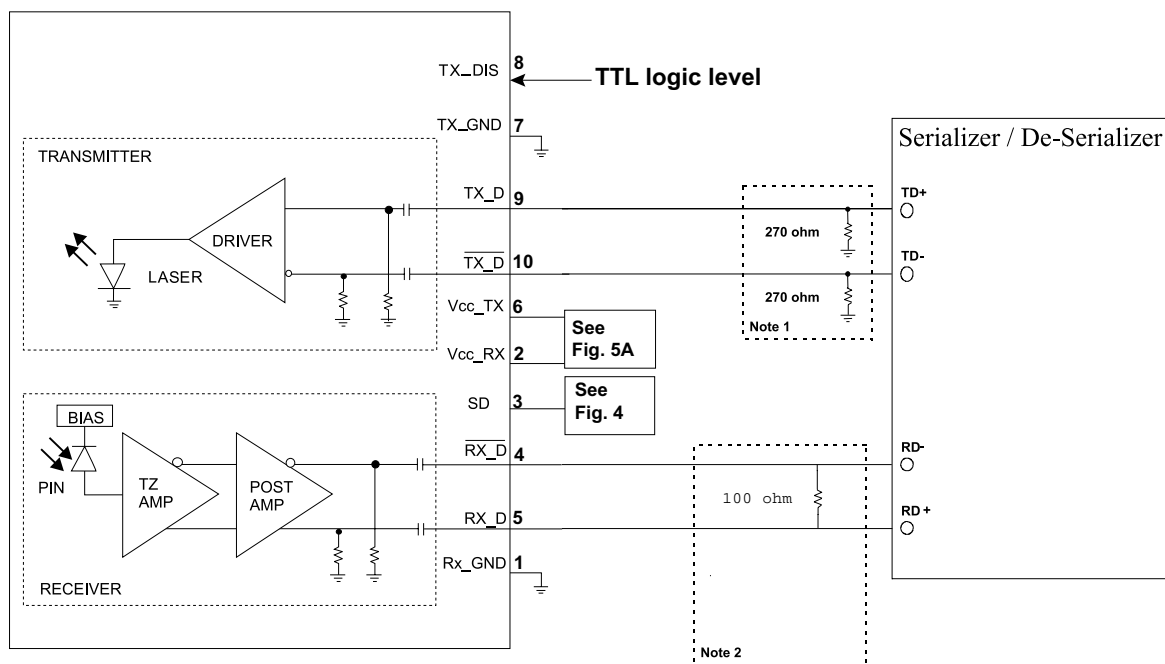


Figure 1. Recommended TRANSMIT and RECEIVE Data Terminations

Notes:

1. Consult the SERDES manufacturer's applications information for biasing required for Tx outputs. Some serializer outputs are internally biased and may not need external bias resistors.
2. Consult SERDES manufacturer's data sheet and application data for appropriate receiver input biasing network.

SLC-25-6-X-TXL Optical Fibre Channel -- +3.3V Small Form Factor (SFF) Transceiver -- 1.0625 GBaud

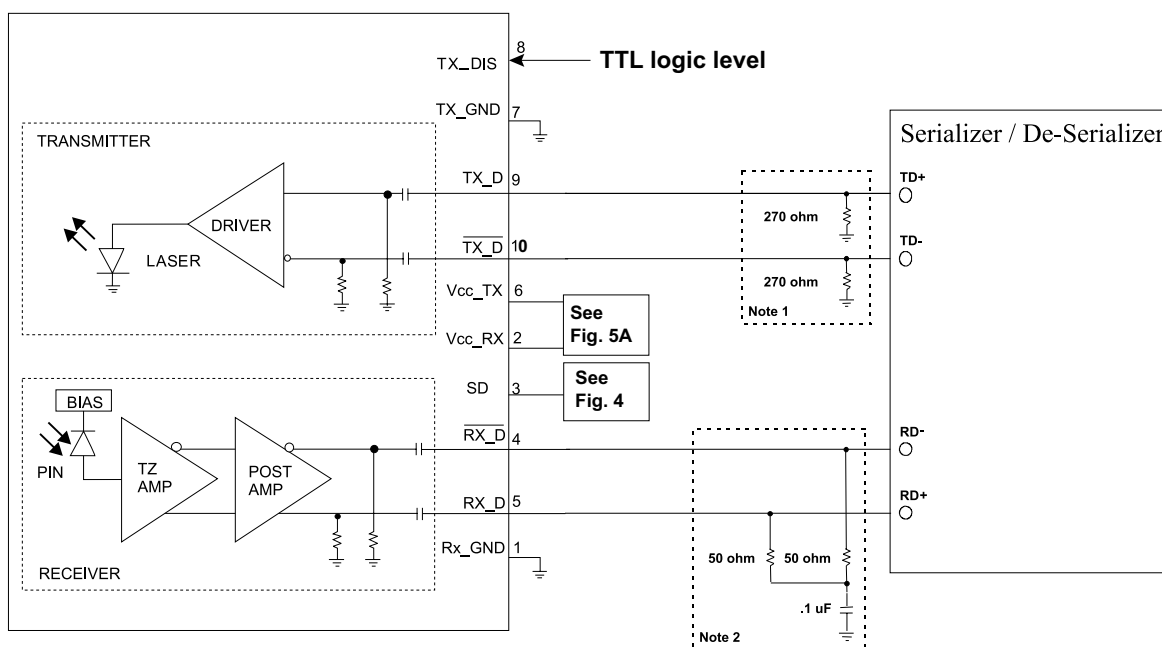


Figure 2. Alternative TRANSMIT and RECEIVE Data Terminations

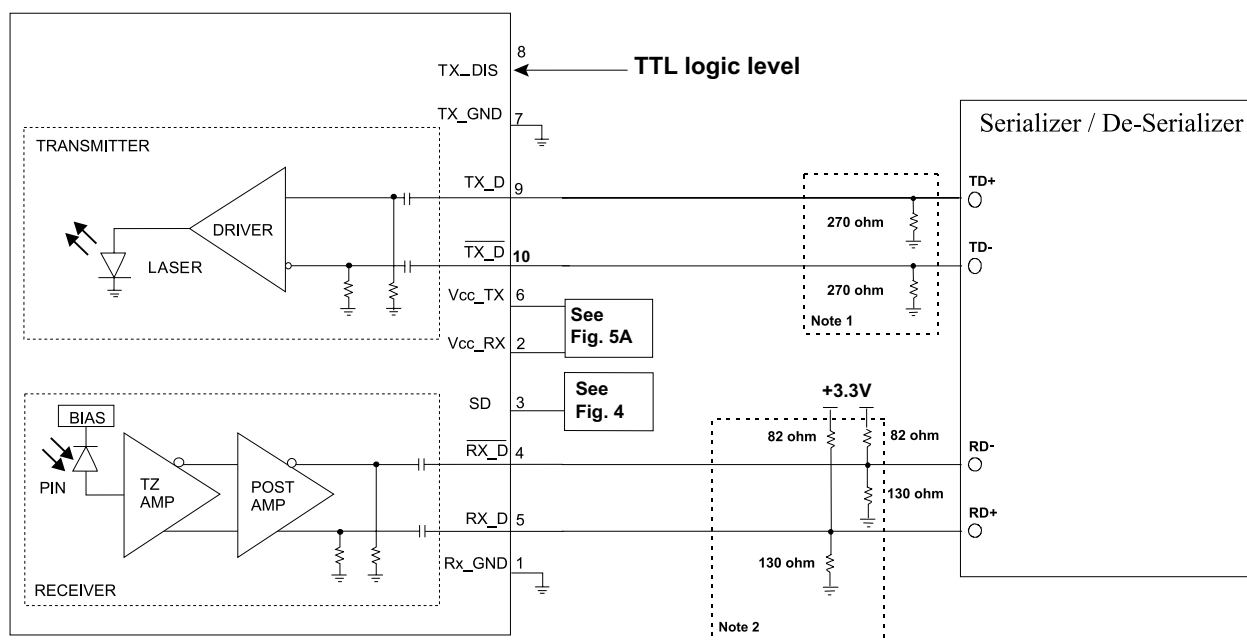


Figure 3. Thevenin Equivalent RECEIVED Data Terminations

Notes:

1. Consult the SERDES manufacturer's applications information for biasing required for Tx outputs. Some serializer outputs are internally biased and may not need external bias resistors.
2. Consult SERDES manufacturer's data sheet and application data for appropriate receiver input biasing network.

SLC-25-6-X-TXL Optical Fibre Channel -- +3.3V Small Form Factor (SFF) Transceiver -- 1.0625 GBaud



SIGNAL DETECT

The SLC-25 transceivers are equipped with TTL signal detect outputs. The TTL option eliminates the need for a PECL to TTL level shifter in most applications. The SFF adhoc industry standard provides for a TTL level Signal Detect output.

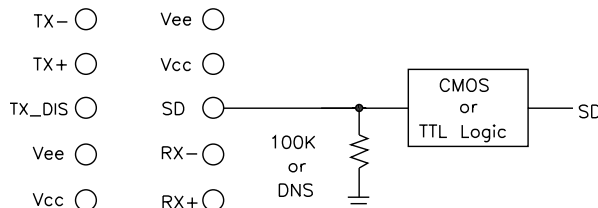
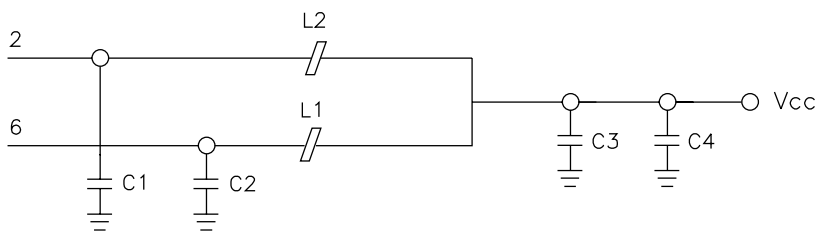


Figure 4 . Signal Detect

POWER COUPLING

A suggested layout for power and ground connections is given in figure 5B below. Connections are made via separate voltage and ground planes. The mounting posts are at case ground and should not be connected to circuit ground. The ferrite bead should provide a real impedance of 50 to 100 ohms at 100 to 1000 MHz. Bypass capacitors should be placed as close to the 10-pin connector as possible.



VALUES:

- C1, C2 = 1000pF, COG
- C3, = 0.1uF
- C4, = 10uF, Ta
- L1, L2 = Real impedance of 50 to 100 Ohms to 1000 MHz.

Figure 5A. Suggested Power Coupling - Electrical Schematic

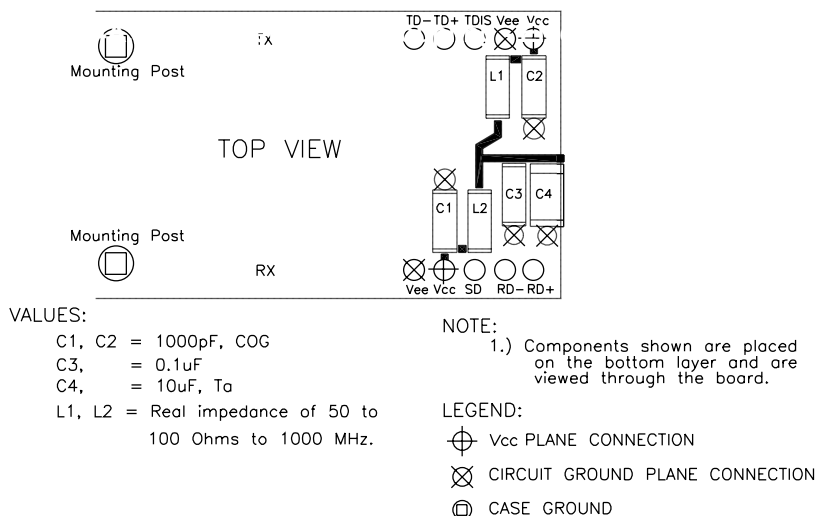


Figure 5B. Suggested Power Coupling - Component Placement

SLC-25-6-X-TXL Optical Fibre Channel -- +3.3V Small Form Factor (SFF) Transceiver -- 1.0625 GBaud

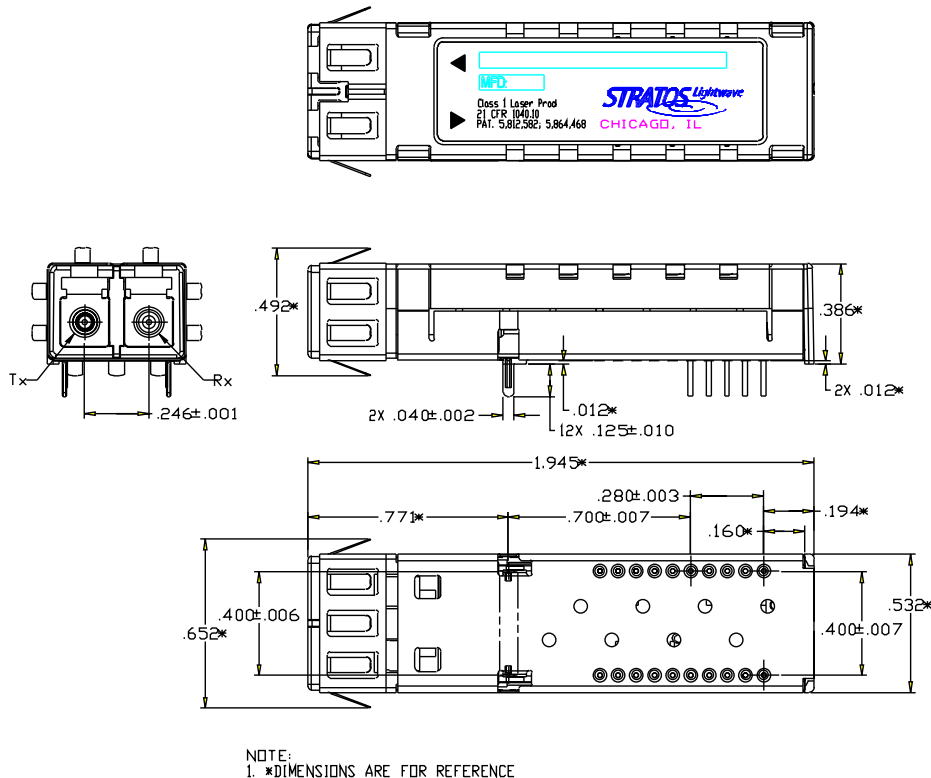


EMI and ESD CONSIDERATIONS

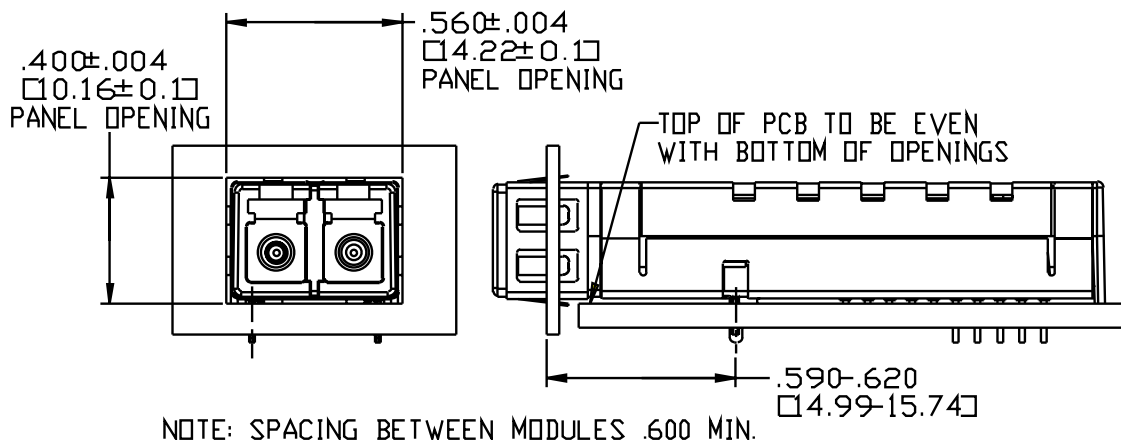
Stratos Lightwave optoelectronic transceivers offer a Die Cast Metal case and two types of chassis grounding clips (Individual & Gang Mount). As shown in the drawing, both clips connect the module case to chassis ground when installed flush through the panel cutout. The grounding clip in this way brushes the edge of the cutout in order to make a proper contact. The use of a grounding clip also provides increased electrostatic protection and helps reduce radiated emissions from the module or the host circuit board through the chassis faceplate. The attaching posts are at case potential and may be connected to chassis ground. They should not be connected to circuit ground.

Plastic optical subassemblies are used to further reduce the possibility of radiated emissions in multimode transceiver. By providing a non-metal receptacle for the optical cable ferrule, the gigabit speed RF electrical signal is isolated from the connector area thus preventing radiated energy leakage from these surfaces to the outside of the panel.

MECHANICAL DIMENSIONS – (INDIVIDUAL MOUNT)



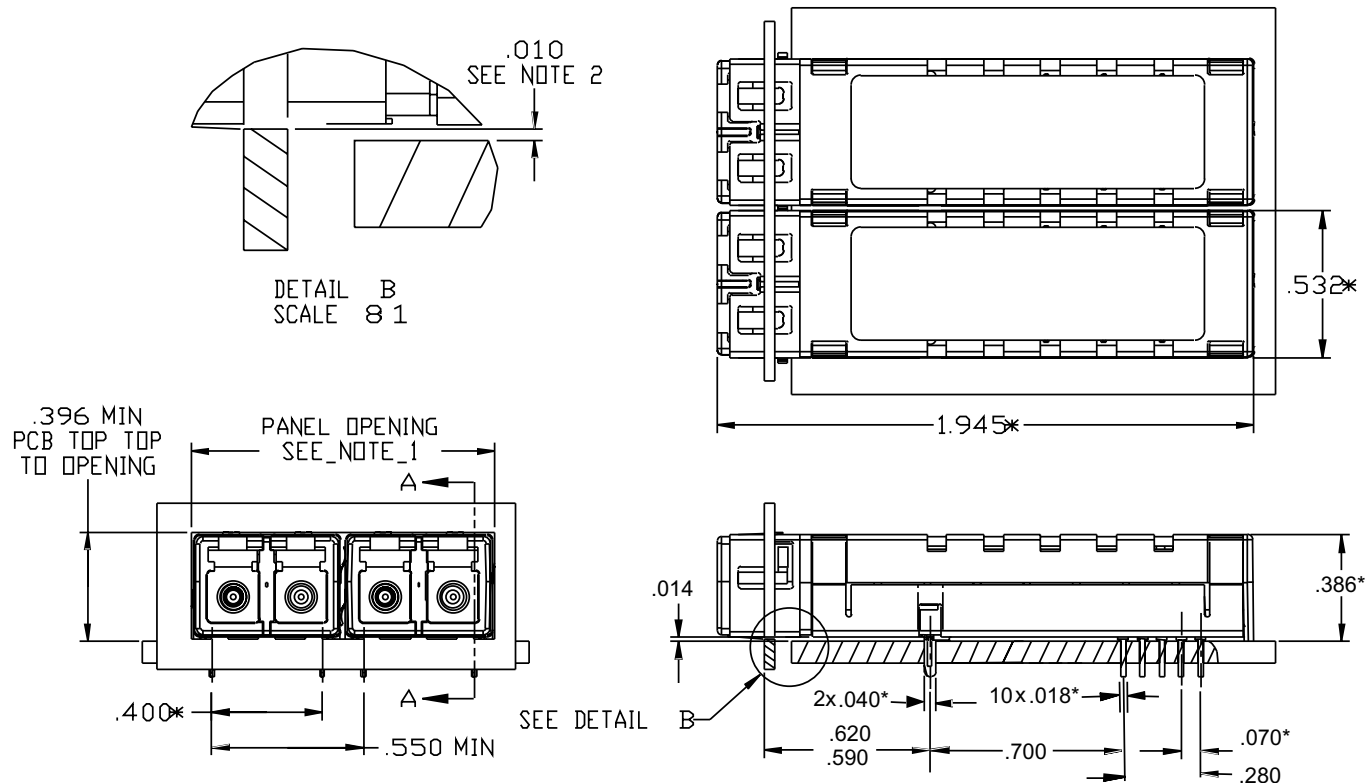
PANEL CUTOUT DIMENSIONS – (INDIVIDUAL MOUNT)



SLC-25-6-X-TXL Optical Fibre Channel -- +3.3V Small Form Factor (SFF) Transceiver -- 1.0625 GBaud



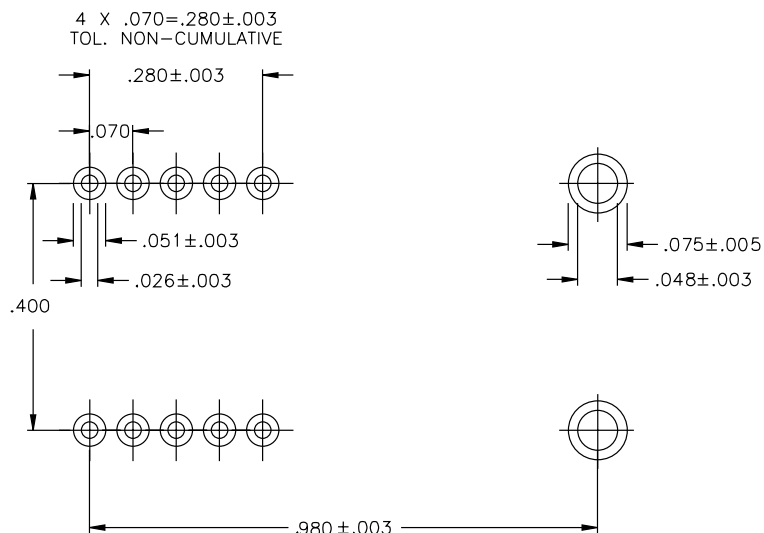
MECHANICAL DIMENSIONS – (GANG MOUNT)



NOTES:

1. OPENING SIZE = .550" X N WHERE N = NUMBER OF MODULES.
2. DIMENSION TOP OF PCB TO BOTTOM OF OPENING(S).
3. * DIMENSIONS ARE FOR REFERENCE.

SUGGESTED PCB LAND PATTERN



SLC-25-6-X-TXL Optical Fibre Channel -- +3.3V Small Form Factor (SFF) Transceiver -- 1.0625 GBaud



PHYSICAL DESCRIPTION

The SLC-25 features a compact design with a standard LC duplex connector for fiber optic connections. The 10-pin connector (70 mil spacing) provides the electrical connection for all operation. With a height of 9.8 mm the SLC-25 fits mezzanine card applications. An epoxy encapsulation provides excellent protection from environmental hazards and assists in heat dissipation for all components. Two wave-solderable posts are provided for attaching the package to the circuit board without the need for multiple attachment operations.

ELECTRICAL INTERFACE, PIN DESCRIPTIONS

PIN 1	RX_GND	Signal Ground
PIN 2	Vcc_RX	+3.3 volt supply for the Receiver Section
PIN 3	SD	Receiver Signal Detect TTL output. Active high on this line indicates a received optical signal.
PIN 4	RD-	Receiver Data Inverted Differential Output
PIN 5	RD+	Receiver Data Non-Inverted Differential Output
PIN 6	Vcc_TX	+3.3 volt supply for the Transmitter Section
PIN 7	TX_GND	Signal Ground
PIN 8	TX_DIS	Transmitter Disable is an active high signal which disables the transmitter output. This signal must be pulled low to enable the transmitter output.
PIN 9	TD+	Transmitter Data Non-Inverted Differential Input
PIN 10	TD-	Transmitter Data Inverted Differential Input
Attaching Posts		The attaching posts are at case potential and can be connected to chassis ground. They should not be connected to circuit ground.



Optoelectronic Products

7444 West Wilson Avenue • Chicago, IL 60656
708/867-9600 • 800/323-6858 • Fax: 708/867-0996
email: optoinfo@stratoslightwave.com
<http://www.stratoslightwave.com>

IMPORTANT NOTICE

Stratos Lightwave reserves the right to make changes to or discontinue any optical link product or service identified in this publication, without notice, in order to improve design and/or performance. Stratos Lightwave advises its customers to obtain the latest version of the publications to verify, before placing orders, that the information being relied on is current. Stratos Lightwave Small Form Factor (SFF) products are covered under U.S. Patent Numbers 5,812,582 and 5,864,468.

Stratos Lightwave warrants performance of its optical link products to current specifications in accordance with Stratos Lightwave standard warranty. Testing and other quality control techniques are utilized to the extent that Stratos Lightwave has determined it to be necessary to support this warranty. Specific testing of all parameters of each optical link product is not necessarily performed on all optical link products.

Stratos Lightwave products are not designed for use in life support appliances, submarines, military, flight hardware, devices, or systems where malfunction of a Stratos Lightwave product can reasonably be expected to result in a personal injury. Stratos Lightwave customers using or selling optical link products for use in such applications do so at their own risk and agree to fully indemnify Stratos Lightwave for any damages resulting from such improper use or sale.

Stratos Lightwave assumes no liability for Stratos Lightwave applications assistance, customer product design, software performance, or infringement of patents or services described herein. Nor does Stratos Lightwave warrant or represent that a license, either expressed or implied is granted under any patent right, copyright, or intellectual property right, and makes no representations or warranties that these products are free from patent, copyright, or intellectual property rights.

Applications that are described herein for any of the optical link products are for illustrative purposes only. Stratos Lightwave makes no representation or warranty that such applications will be suitable for the specified use without further testing or modification.