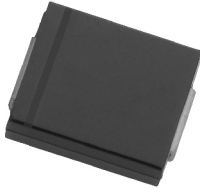


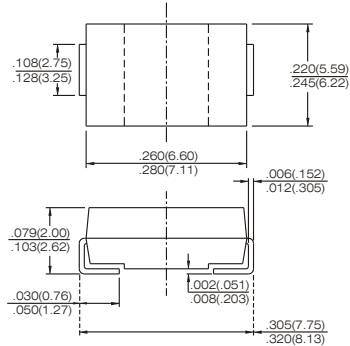
# SMC5342B thru SMC5378B

## SURFACE MOUNT ZENER TYPE

### SURFACE MOUNT ZENER DIODES 5.0 WATTS



SMC/DO-214AB



Dimensions in inches and (millimeters)

#### FEATURES

- For surface mounted applications in order to optimize board space.
- Low profile package
- Built-in strain relief
- Glass passivated junction
- Low inductance
- Plastic package has Underwriters Laboratory Flammability Classification 94V-0
- Pb free product are available : 99% Sn can meet RoHS environment substance directive request

#### MECHANICAL DATA

Case: JEDEC DO-214AB, Molded plastic over passivated junction.  
 Terminals: Solder plated, solderable per MIL-STD-750, Method 2026  
 Polarity: Color band denotes positive end (cathode)  
 Standard Packaging: 16mm tape (EIA-481)  
 Weight: 0.007 ounce, 0.21 gram

#### MAXIMUM RATINGS (at $T_A=25^{\circ}\text{C}$ unless otherwise noted)

Parameter	Symbol	Value	Units
DC Power Dissipation on $T_L=75^{\circ}\text{C}$ ,Measure at Zero Lead Length Derate above $75^{\circ}\text{C}$	$P_D$	5.0 67	Watts mW / $^{\circ}\text{C}$
Operating Junction and Storage Temperature Range	$T_J$ , $T_{STG}$	-55 to +150	$^{\circ}\text{C}$

# SMC5342B thru SMC5378B

## SURFACE MOUNT ZENER TYPE

### SURFACE MOUNT ZENER DIODES 5.0WATTS

Part No.	Marking Code	Nominal Zener Voltage		Max.Zener Impedance				Max.Zener Reverse Leakage Current		Max. DC Zener Current
		$V_Z @ I_{ZT}$		$Z_{ZT} @ I_{ZT}$		$Z_{ZK} @ I_{ZK}$		$I_R @ V_R$		$I_{ZM}$
		Nom.V	mA	$\Omega$	mA	$\Omega$	mA	$\mu A$	V	mA
SMC5342B	5342C	6.8	175	1.0	175	200	1.0	150	5.2	700
SMC5343B	5343C	7.5	175	1.5	175	200	1.0	150	5.7	630
SMC5344B	5344C	8.2	150	1.5	150	200	1.0	150	6.2	580
SMC5345B	5345C	8.7	150	2.0	150	200	1.0	150	6.6	545
SMC5346B	5346C	9.1	150	2.0	150	150	1.0	150	6.9	520
SMC5347B	5347C	10	125	2.0	125	125	1.0	150	7.6	475
SMC5348B	5348C	11	125	2.5	125	125	1.0	50	8.4	430
SMC5349B	5349C	12	100	3.0	100	125	1.0	2.0	9.1	395
SMC5350B	5350C	13	100	3.0	100	100	1.0	1.0	9.9	365
SMC5351B	5351C	14	100	3.0	100	75	1.0	1.0	10.6	340
SMC5352B	5352C	15	75	3.0	75	75	1.0	1.0	11.5	315
SMC5353B	5353C	16	75	3.0	75	75	1.0	1.0	12.2	295
SMC5354B	5354C	17	70	3.0	70	75	1.0	0.5	12.9	280
SMC5355B	5355C	18	65	3.0	65	75	1.0	0.5	13.7	265
SMC5356B	5356C	19	65	3.0	65	75	1.0	0.5	14.4	250
SMC5357B	5357C	20	65	3.0	65	75	1.0	0.5	15.2	237
SMC5358B	5358C	22	50	4.0	50	75	1.0	0.5	16.7	216
SMC5359B	5359C	24	50	4.0	50	100	1.0	0.5	18.2	198
SMC5360B	5360C	25	50	4.0	50	110	1.0	0.5	19.0	190
SMC5361B	5361C	27	50	5.0	50	120	1.0	0.5	20.6	176
SMC5362B	5362C	28	50	6.0	50	130	1.0	0.5	21.2	170
SMC5363B	5363C	30	40	8.0	40	140	1.0	0.5	22.8	158
SMC5364B	5364C	33	40	10	40	150	1.0	0.5	25.1	144
SMC5365B	5365C	36	30	11	30	160	1.0	0.5	27.4	132
SMB5366B	5366C	39	30	14	30	170	1.0	0.5	29.7	122
SMC5367B	5367C	43	30	20	30	190	1.0	0.5	32.7	110
SMC5368B	5368C	47	25	25	25	210	1.0	0.5	35.8	100
SMC5369B	5369C	51	25	27	25	230	1.0	0.5	38.8	93
SMC5370B	5370C	56	20	35	20	280	1.0	0.5	42.6	86
SMC5371B	5371C	60	20	40	20	350	1.0	0.5	42.5	79
SMC5372B	5372C	62	20	42	20	400	1.0	0.5	47.1	76
SMC5373B	5373C	68	20	44	20	500	1.0	0.5	51.7	70
SMC5374B	5374C	75	20	45	20	620	1.0	0.5	56.0	63
SMC5375B	5375C	82	15	65	15	720	1.0	0.5	62.2	58
SMB5376B	5376C	87	15	75	15	760	1.0	0.5	66.0	54.5
SMB5377B	5377C	91	15	75	15	760	1.0	0.5	69.2	52.5
SMC5378B	5378C	100	12	90	12	800	1.0	0.5	76.0	47.5