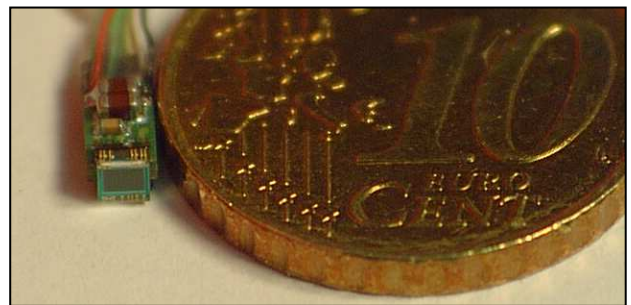
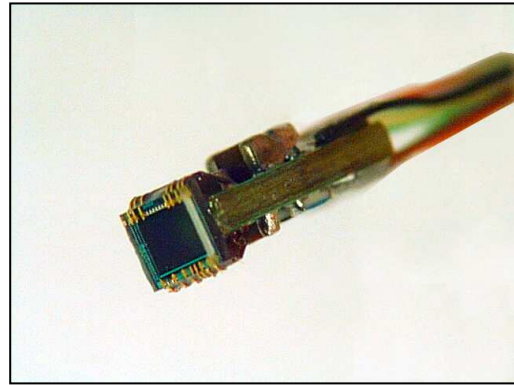




# Color CCD MicroCamera Head 1/10'' SMCC10028

## Features:

- Extremely miniaturized colour CCD camera (2.7 \* 2 \* 6.7 mm)
- Light Weight (0.20 gr)
- Long length cables driving capability (up to 10 meters)
- High resolution (Ye, Cy, Mg and G complementary colour mosaic filters)
- High sensitivity and low smear
- No voltage adjustment (Reset Gate and substrate bias are not adjusted)
- Low dark current
- Excellent anti blooming characteristics
- Continuous variable-speed shutter
- Field period readout system
- Variable charge-storage time electronic shutter
- Recommended range of exit pupil distance : -4 mm to -10 mm



- Custom application :  
Endoscope camera head in its housing



## General Description:

The 3D Micro Camera is a highly miniaturized, light weight, high performance and easy-to-use colour CCD Camera for endoscopes applications. The innovative design makes them suitable also for applications in the area of robotics, assembly and mounting devices or manipulators.

It embeds state-of-the art Sony colour CCD sensors with high resolution and sensitivity, low smear and dark current, and excellent anti blooming characteristics.

The embedded electronics grant the micro camera with a long cables driving capability: up to 10 meters of cable can be connected between the camera head and the base station (greater length of cable can be studied on specific demand).

It is available for PAL and NTSC video systems.

## Ordering Information:

Part number	Video Format		Cable Length
SMCC10028	P : PAL N : NTSC	-	Between 1.0 and 9.9 meters : <b>XX</b> => X.X meters Beyond 10 meters : study on specific request

3D Plus does not provide any optical system (lens or filter) on this product.



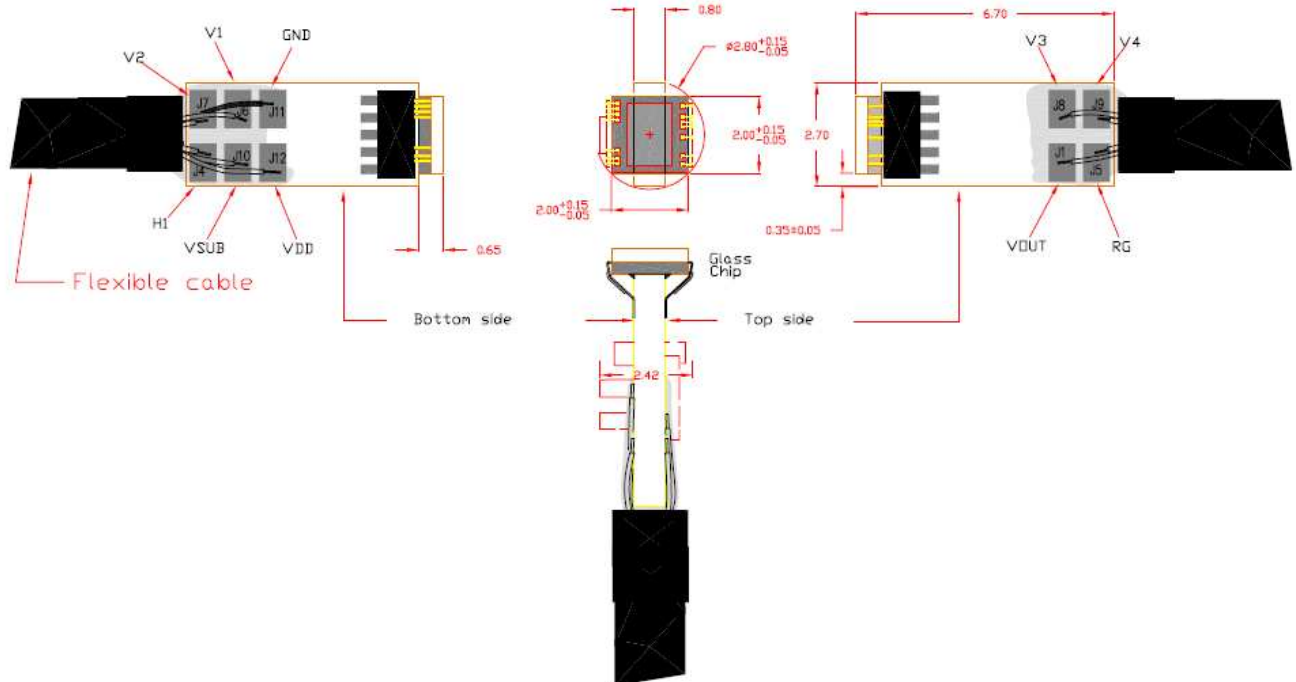
# Color CCD MicroCamera Head 1/10''

## SMCC10028

### Technical features:

<i>Features</i>		
Video System	PAL	NTSC
Image Sensor	Interline 1/10'' CCD	
Reference	SONY CCD Image Sensor ICX257FKW	SONY CCD Image Sensor ICX256FKW
Number of effective pixels	290 000	250 000
Active Pixel Size	2.95 µm (H) x 1.90 µm (V)	2.90 µm (H) x 2.25 µm (V)
Active Image Area	1.5 mm (H) x 1.1 mm (V)	
Number of picture elements	500 (H) x 582 (V)	510 (H) x 492 (V)
Spectral sensitivity : (incl. Infrared blocking filter)	380 – 780 nm	
Filter	Ye, Cy, Mg and G complementary colour mosaic filters	
<i>Environment</i>		
Temperature (operating)	- 10 °C / + 60°C	
Temperature (storage)	-30°C / +80°C	
Relative humidity	60 % or less	
<i>Dimensions</i>		
Dimensions	2,7 * 2 * 6,7 mm	
Weight	0.20 g	

### Mechanical drawing and Pin assignment:



### Main Sales Office:

<b>France</b>	3D PLUS 641, rue Hélène Boucher ZI. 78532 BUC Cedex	Tel : 33 (0)1 30 83 26 50	Fax : 33 (0)1 39 56 25 89	Web : <a href="http://www.3d-plus.com">www.3d-plus.com</a> e-mail : <a href="mailto:sales@3d-plus.com">sales@3d-plus.com</a>
<b>North America</b>	3 D PLUS USA, Inc. 2570 Eldorado Parkway, Suite 150 McKinney, TX 75070	Tel : (1) 214 733-8505	Tel : (1) 214733-8506	e-mail : <a href="mailto:jquinn@3d-plususa.com">jquinn@3d-plususa.com</a>