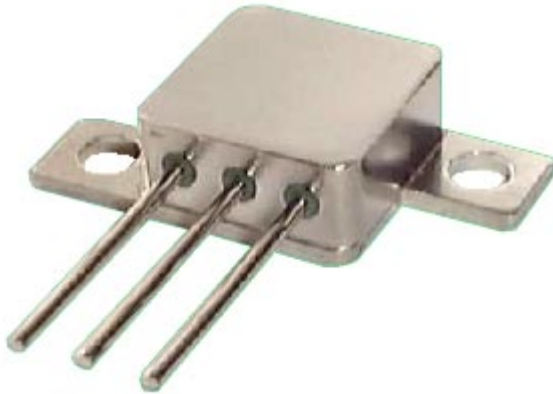


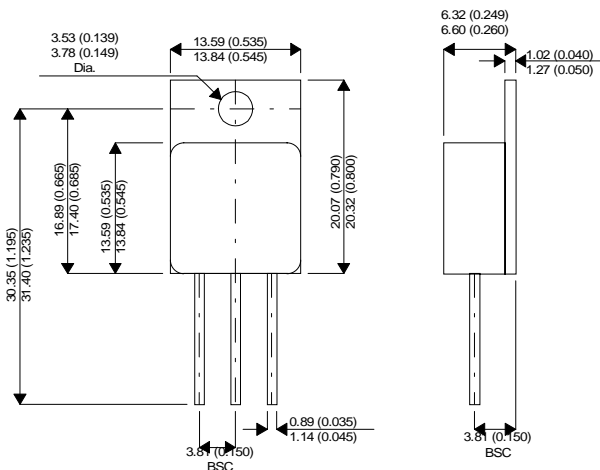
TO254 (Z-pack option shown)



ULTRA FAST RECOVERY TO254 HERMETIC DIODES FOR HIGH REL APPLICATIONS

- High Voltage (800V)
- High Current (25A)
- Ultra Fast (45nS)
- Common Cathode
- TO254 Hermetic Package
- TO254 Z-pack option available
- Screening Options Available

MECHANICAL DATA - TO254 Dimensions in mm (inches) (Standard option)



The SML800 and SML500 dual diodes are specifically designed for high reliability applications requiring hermetic Ultra Fast Recovery diodes.

Devices are available in the standard TO254 package and also the Z-pack option (shown).

Contact the Semelab Sales Office for further information.

Part Number	PIV	I _o	V _{F@I_o}	I _{R@PIV}	I _{R@PIV125°}	t _{rr}	T _{j(max)}
SML800UF25D	800v	25A	1.3V	15μA	1mA	70nS	175°
SML800UF15D	800v	15A	1.3V	15μA	1mA	60nS	175°
SML500UF25D	500v	25A	1.2V	10μA	1mA	50nS	175°
SML500UF15D	500v	15A	1.2V	10μA	1mA	45nS	175°