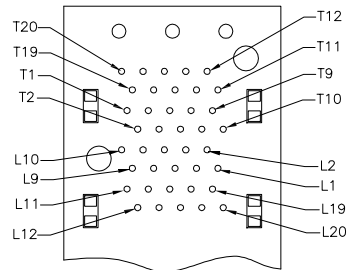
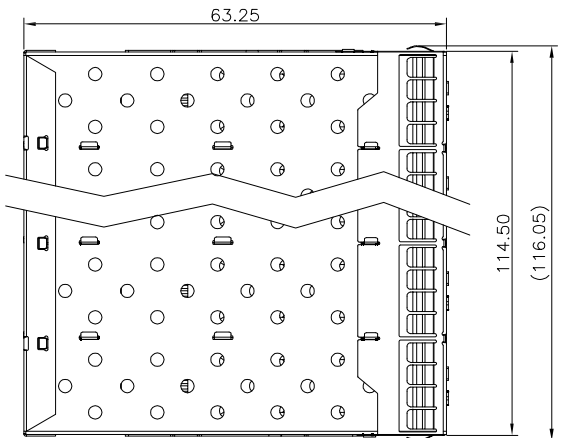
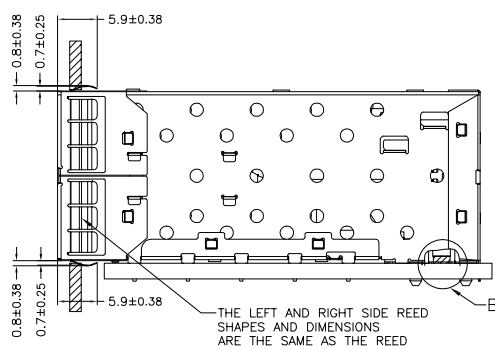


REV.	ECN. NO.	NAME	DATE

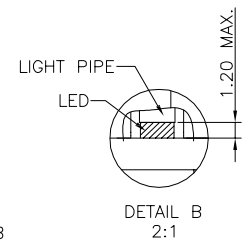
A



CONNECTOR PIN-OUT COMPONENT SIDE OF BOARD



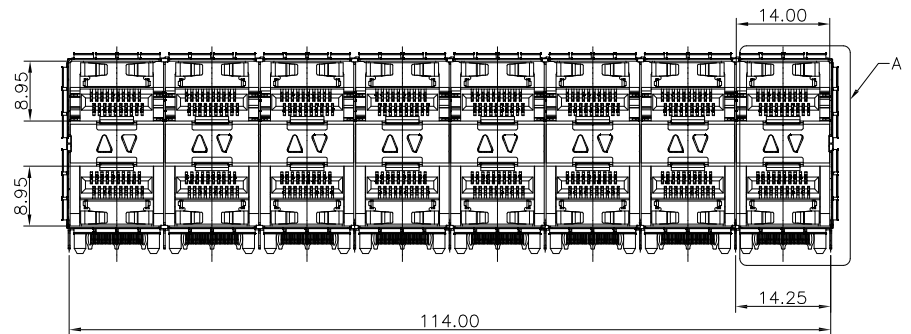
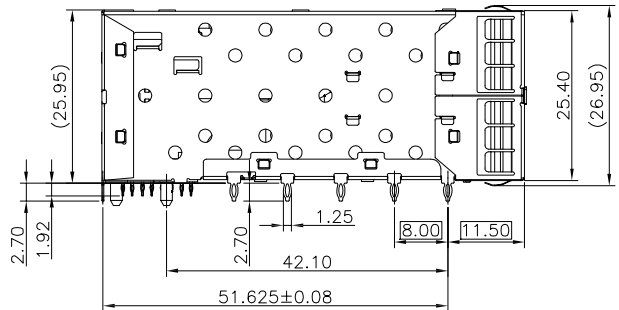
THE LEFT AND RIGHT SIDE REED SHAPES AND DIMENSIONS ARE THE SAME AS THE REED



DETAIL B 2:1

B

C

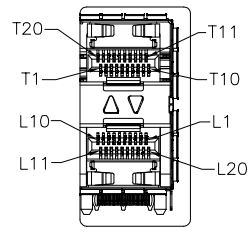


NOTES:

MATERIAL:
CAGE: COPPER ALLOY, NI-PLATEDCONNECTOR:
PLASTIC HOUSING: HIGH TEMPERATURE LCP, UL94 V-0.
LIGHT PIPE: POLYCARBONATE; COLOR: CLEAR
SPRING: STAINLESS STEEL
CONTACTS: PHOSPHOR BRONZE
CONTACT PLATING: 15u" MIN. GOLD ON MATING AREA,
150u" MATTE TIN ON SOLDER TAILS

PACKAGING: TRAY PACKAGING.

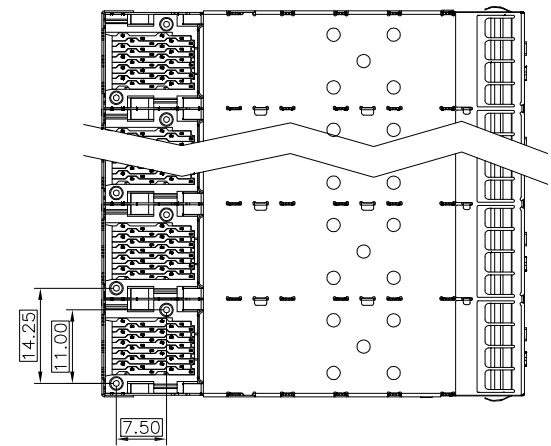
TEMPERATURE RANGE: -40°C TO +85°C



DETAIL A 1:1

D

E



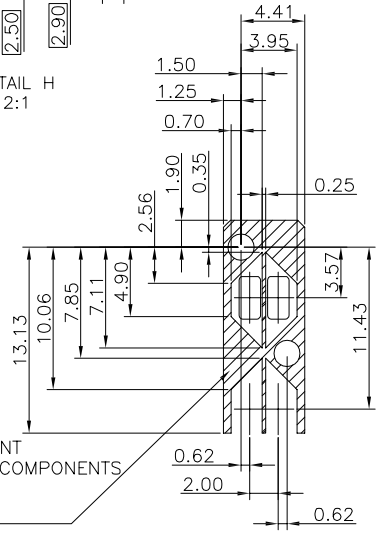
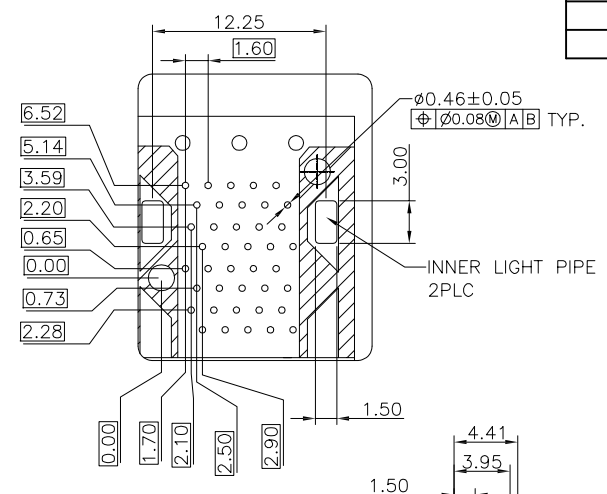
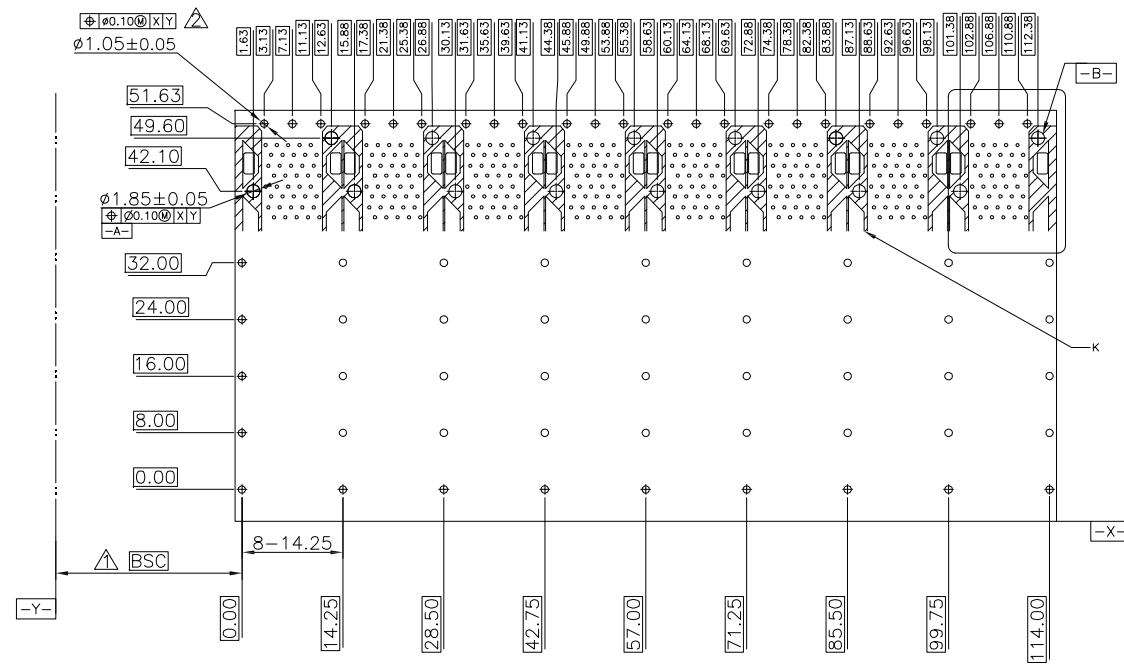
TOLERANCE UNSPECIFIED		 a vital connector company		FOR YOUR VITAL CONNECTION	
.0	± 0.38				
.00	± 0.25	TITLE: SFP+2*8 CAGE+CONN			
.000	± 0.10				
ANGLE	± 3.00°	DRAWN BY:	BECKER	PART NO:	SN28C
MANUFACTURING COPY		CHECKED BY:	VTA	SIZE: A4	UNIT: mm
		APPROVED BY:	QPF	PROJECTION	
					http://www.vitalconn.com

RoHS Compliant

F

F

REV.	ECN. NO.	NAME	DATE



RECOMMENDED PCB CONFIGURATION

THE ENTIRE AREA OF THE CONNECTOR FOOTPRINT TO BE CONSIDERED THE KEEP OUT AREA FOR COMPONENTS (OTHER THAN LIGHT PIPE LE'S) THIS AREA IS INDICATED BY THE ADSDHED LINE

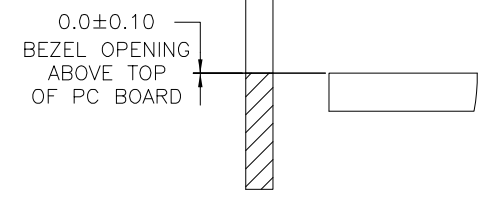
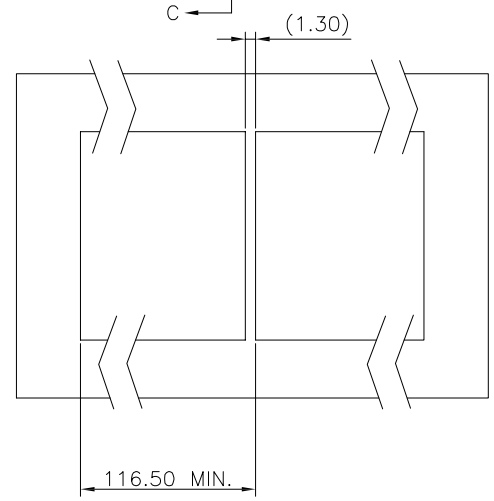
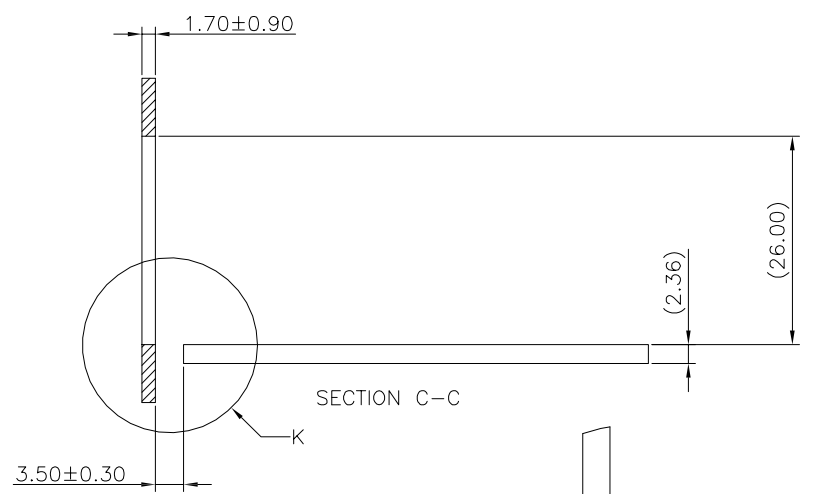
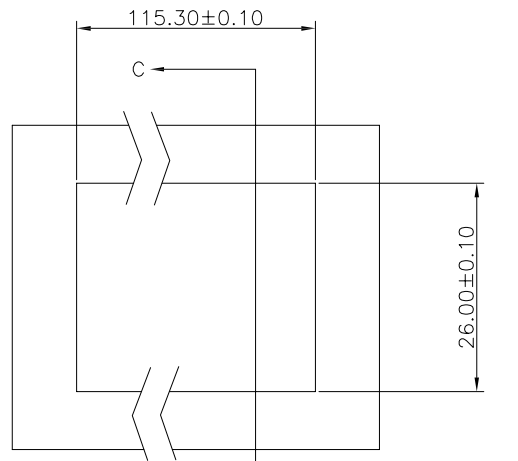
DETAIL LIGHT PIPE LOCATION AND OTHER ZONES
DETAIL K
2:1

- NOTES:
- DATUM AND BASIC DIMENSIONS ESTABLISHED BY CUSTOMER.
 - 1.05 mm DIAMETER HOLES ARE CHASSIS GROUND .

RoHS Compliant


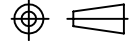
TOLERANCE UNSPECIFIED		 a vital connector company		FOR YOUR VITAL CONNECTION			
.0	± 0.38						
.00	± 0.25	TITLE: SFP+2*8 CAGE+CONN					
.000	± 0.10						
ANGLE	± 3.00°	DRAWN BY:	BECKER	PART NO:	SN28C	REV: A	
MANUFACTURING COPY		CHECKED BY:	VTA	SIZE: A4	UNIT: mm	SHEET: 20F3	FCN: A4
		APPROVED BY:	QPF	PROJECTION		http://www.vitalconn.com	

REV.	ECN. NO.	NAME	DATE



RECOMMENDED BEZEL DESIGN

RoHS Compliant

TOLERANCE UNSPECIFIED		 a vital connector company		FOR YOUR VITAL CONNECTION	
.0	± 0.38			TITLE: SFP+2*8 CAGE+CONN	
.00	± 0.25	DRAWN BY: BECKER	PART NO: SN28C	REV: A	
.000	± 0.10	CHECKED BY: VTA	SIZE: A4	UNIT: mm	SHEET:30F3
ANGLE	± 3.00°	APPROVED BY: QPF	PROJECTION		FCN: A4
MANUFACTURING COPY				http://www.vitalconn.com	