

SOD4001_7

SURFACE MOUNT GENERAL RECTIFIER

Features

- Plastic package has Underwriters Laboratory
- Flammability classification 94V-0 Utilizing Flame
- Retardant Epoxy Molding Compound
- For surface mount applications
- Low leakage current
- RoHS compliant package

Mechanical Data

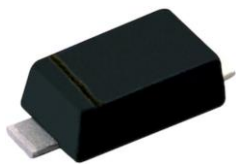
- Case: SOD-123, Molded Plastic
- Terminals: Plated Leads Solderable per MIL-STD-202,

Method 208

- Polarity: Cathode Band
- Weight: 0.017 grams

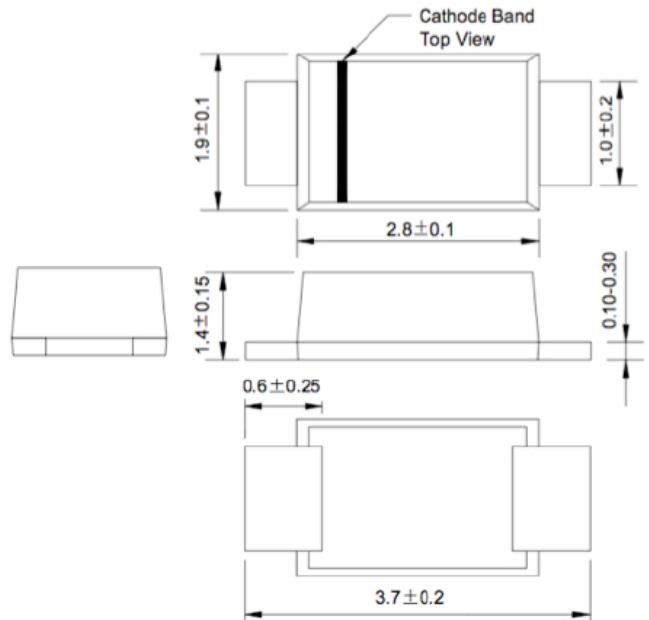
Packing & Order Information

3,000/Reel



RoHS
COMPLIANT

SOD-123FL



Graphic symbol



MAXIMUM RATINGS AND ELECTRICAL CHARACTERISTICS

Rating at 25 °C ambient temperature unless otherwise specific.

Single phase, half wave, 60 Hz, resistive or inductive load

For capacitive load, derate current by 20%

Rating	Symbol	SOD 4001	SOD 4002	SOD 4003	SOD 4004	SOD 4005	SOD 4006	SOD 4007	Unit
Recurrent Peak Reverse Voltage (Max.)	V_{RRM}	50	100	200	400	600	800	1000	V
RMS Voltage (Max.)	V_{RMS}	35	70	140	280	420	560	700	V
Reverse Voltage (Max.)	V_R	50	100	200	400	600	800	1000	V
Forward Voltage (Max.)	V_F	1.1							V
Average Forward Rectified Current (Max.)	I_O	1.0							A
Peak Forward Surge Current	I_{FSM}	25							A
DC Reverse Current at 5.0 $V_R = V_{RRM}$, $T_a = 25^\circ C$ Rated DC Blocking Voltage (Max.)	I_R	5 50							μA
Junction – Ambient Thermal Resistance (Typ.)	$R_{\theta JA}$	20							$^\circ C/W$
Storage and Operating Temperature Range	T_{STG}, T_J	-55 ~ 150, -55 to 150							$^\circ C$

SOD4001_7

SURFACE MOUNT GENERAL RECTIFIER

■ RATING AND CHARACTERISTIC CURVES

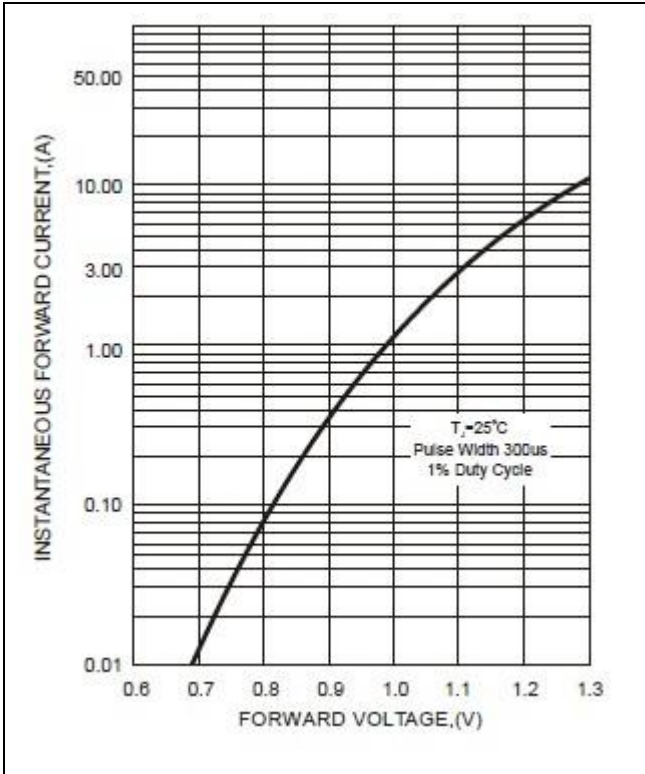


FIG.1-TYPICAL FORWARD CHARACTERISTICS

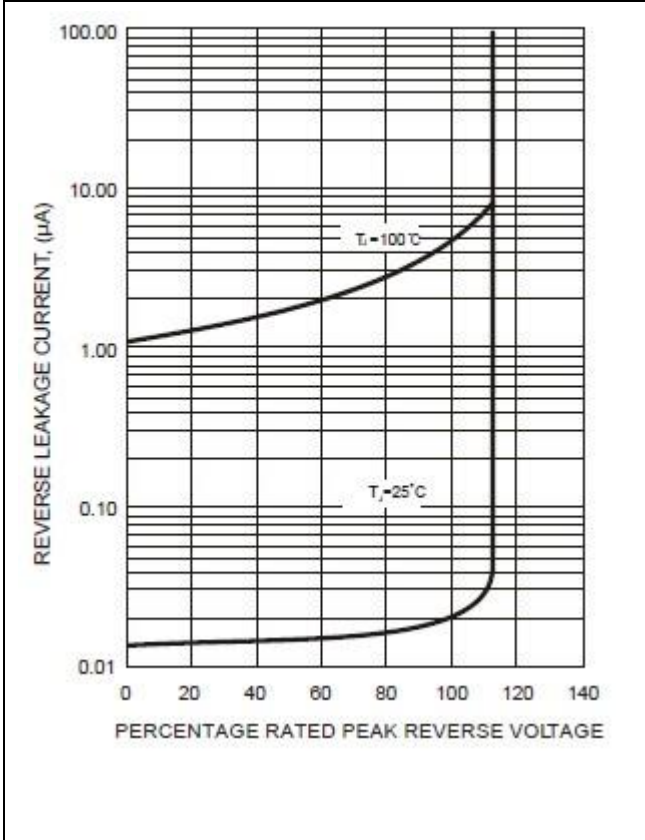


FIG.3 - TYPICAL REVERSE CHARACTERISTICS

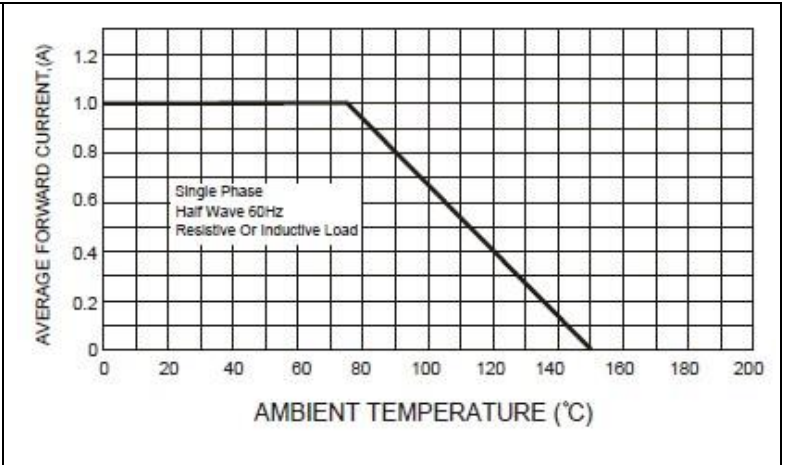


FIG.2-TYPICAL FORWARD CURRENT DERATING CURVE

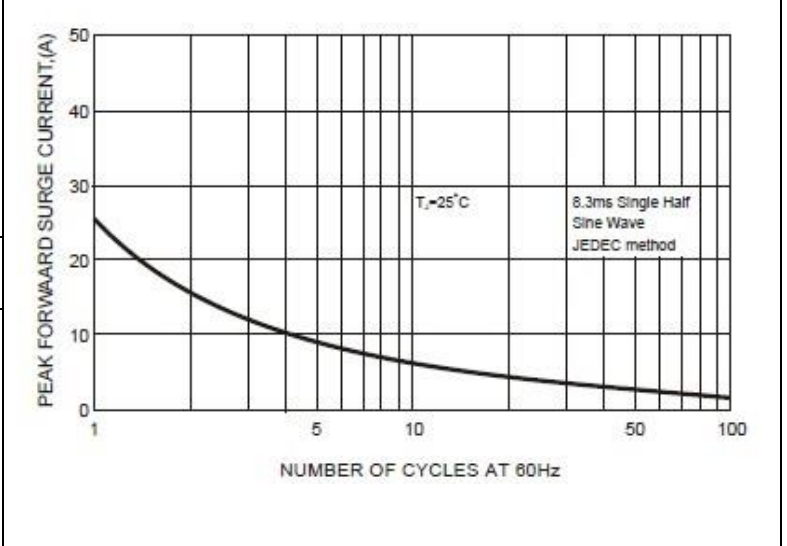


FIG.4-MAXIMUM NON-REPETITIVE FORWARD SURGE CURRENT

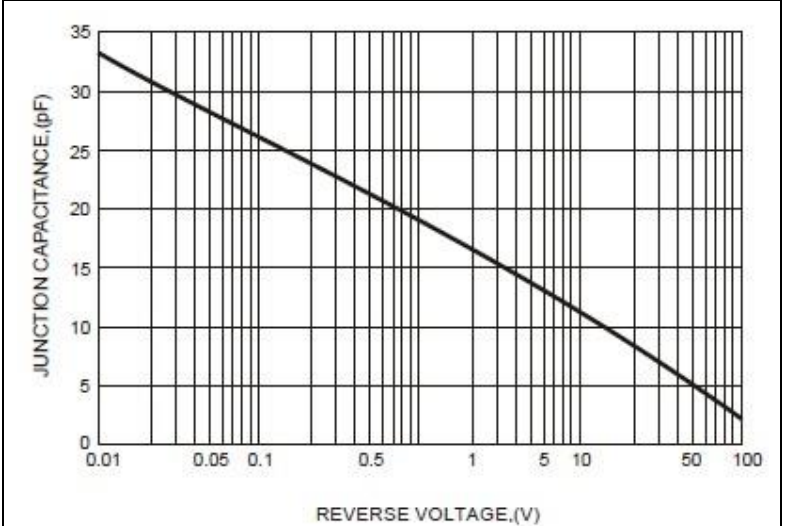


FIG.5-TYPICAL JUNCTION CAPACITANCE

SOD4001_7

SURFACE MOUNT GENERAL RECTIFIER

Disclaimer

ALL PRODUCT, PRODUCT SPECIFICATIONS AND DATA ARE SUBJECT TO CHANGE

WITHOUT NOTICE TO IMPROVE RELIABILITY, FUNCTION OR DESIGN OR OTHERWISE.

Bruckewell Technology Inc., its affiliates, agents, and employees, and all persons acting on its or their behalf (collectively, "Bruckewell"), disclaim any and all liability for any errors, inaccuracies or incompleteness contained in any datasheet or in any other disclosure relating to any product.

Bruckewell makes no warranty, representation or guarantee regarding the suitability of the products for any particular purpose or the continuing production of any product. To the maximum extent permitted by applicable law, Bruckewell disclaims

- (i) Any and all liability arising out of the application or use of any product.
- (ii) Any and all liability, including without limitation special, consequential or incidental damages.
- (iii) Any and all implied warranties, including warranties of fitness for particular purpose, non-infringement and merchantability.

Statements regarding the suitability of products for certain types of applications are based on Bruckewell's knowledge of typical requirements that are often placed on Bruckewell products in generic applications.

Such statements are not binding statements about the suitability of products for a particular application. It is the customer's responsibility to validate that a particular product with the properties described in the product specification is suitable for use in a particular application. Parameters provided in datasheets and/or specifications may vary in different applications and performance may vary over time.

Product specifications do not expand or otherwise modify Bruckewell's terms and conditions of purchase, including but not limited to the warranty expressed therein.