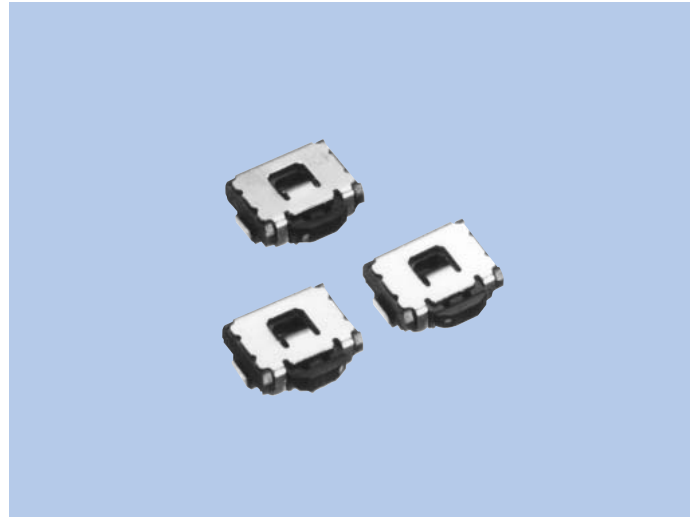


Side Click Type Tactile Switches SOH Series

FEATURES

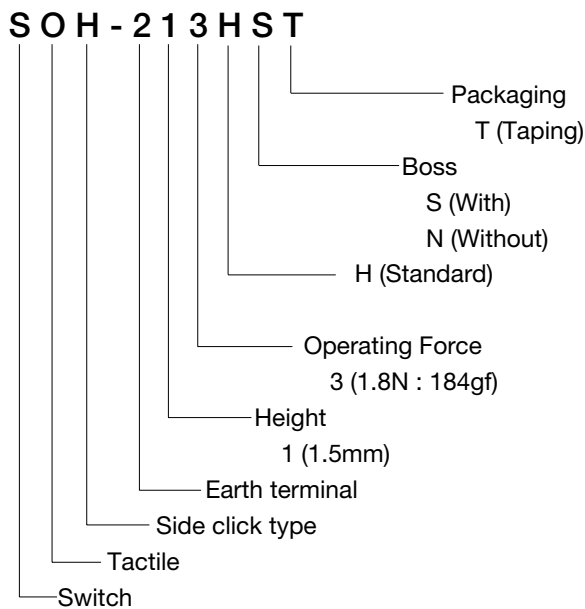
1. Minimized surface area.
2. Excellent sealing to resist contamination and flux.
3. Stainless steel click springs provide a sharp tactile sensation and long life.
4. Ideal of side click controllers in miniature applications.
5. SMT type and reflow-soldering for surface mounting.



USES

1. Side click type tactile switches for use in mobile phones and miniature digital devices.

MODEL NAME CODE



SPECIFICATIONS

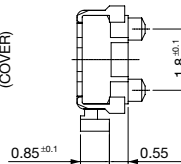
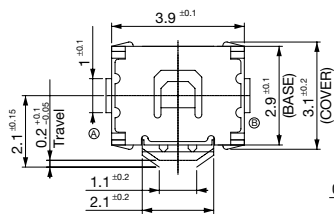
Electrical Characteristics	Rating	50mA, 12V DC
	Contact Resistance	100mΩ or less
	Insulation Resistance	100MΩ or more
	Withstand Voltage	1 minute at 250V
Mechanical Characteristics	Operating Force	1.8N (184gf)
	Life	100,000cycles

www.DataSheet4U.com

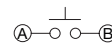
TYPE

Model Name Code	Order Number	Operating Force	Boss	Pcs
SOH-213HST	R66 6072	1.8N(183gf)	With	5,000
SOH-213HNT	R66 6073	1.8N(183gf)	Without	5,000

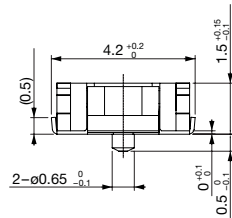
DIMENSIONS



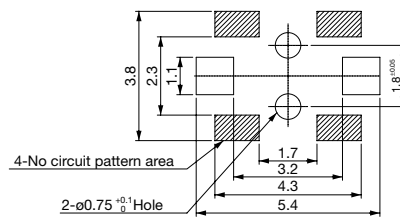
Circuit diagram



Recommendation Metarumasuk Thickness : 200μm

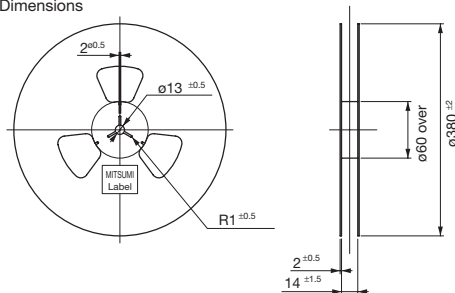


Reference Printed wiring board land dimensions (When viewed from switch mounting side)



☆Tolerance: ± 0.3mm

Reel Dimensions



Plastic Tape Dimensions

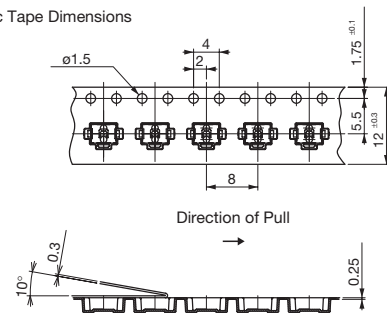


Fig-3 TOLERANCE ±0.1

*One reel accommodates 5,000 pieces (Ø380).

Unit : mm