



A New Direction in Mixed-Signal

SP490E/491E

Enhanced Full Duplex RS-485 Transceivers

FEATURES

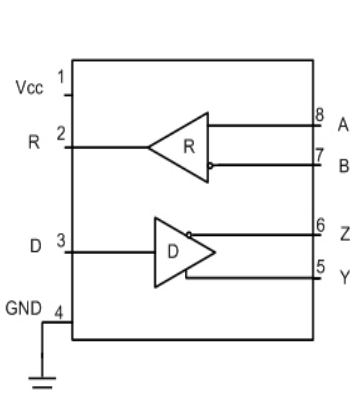
- +5V Only
- Low Power BiCMOS
- Driver/Receiver Enable (SP491E)
- RS-485 and RS-422 Drivers/Receivers
- Pin Compatible with LTC490 and SN75179 (SP490E)
- Pin Compatible with LTC491 and SN75180 (SP491E)
- Improved ESD Specifications:
 - ±15kV Human Body Model
 - ±15kV IEC61000-4-2 Air Discharge

Now Available in Lead Free Packaging

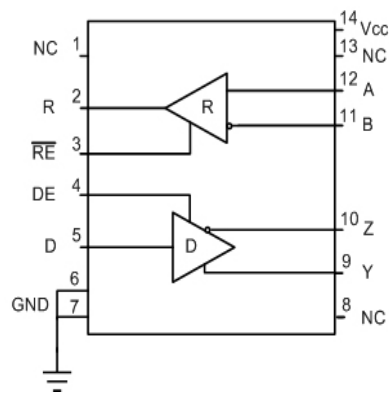
DESCRIPTION

The **SP490E** is a low power differential line driver/receiver meeting RS-485 and RS-422 standards up to 10Mbps. The **SP491E** is identical to the **SP490E** with the addition of driver and receiver tri-state enable lines. Both products feature $\pm 200\text{mV}$ receiver input sensitivity, over wide common mode range. The **SP490E** is available in 8-pin plastic DIP and 8-pin NSOIC packages for operation over the commercial and industrial temperature ranges. The **SP491E** is available in 14-pin DIP and 14-pin NSOIC packages for operation over the commercial and industrial temperature ranges.

BLOCK DIAGRAMS



SP490E



SP491E

ABSOLUTE MAXIMUM RATINGS

These are stress ratings only and functional operation of the device at these ratings or any other above those indicated in the operation sections of the specifications below is not implied. Exposure to absolute maximum rating conditions for extended periods of time may affect reliability.

| | |
|--------------------------|----------------------------------|
| V _{CC} | +7V |
| Input Voltages | |
| Drivers..... | -0.5V to (V _{CC} +0.5V) |
| Receivers..... | ±14V |
| Output Voltages | |
| Drivers..... | ±14V |
| Receivers..... | -0.5V to (V _{CC} +0.5V) |
| Storage Temperature..... | -65° C to +150° |
| Power Dissipation..... | 1000mW |

ELECTRICAL CHARACTERISTICS

T_{MIN} to T_{MAX} and V_{CC} = 5V ± 5% unless otherwise noted.

| PARAMETERS | MIN. | TYP. | MAX. | UNITS | CONDITIONS |
|--|------|------|-----------------|-------|--|
| SP490E DRIVER | | | | | |
| DC Characteristics | | | | | |
| Differential Output Voltage | GND | | V _{CC} | Volts | Unloaded; R = ∞ ; see figure 1 |
| Differential Output Voltage | 2 | | V _{CC} | Volts | With Load; R = 50Ω; (RS422); see figure 1 |
| Differential Output Voltage | 1.5 | | V _{CC} | Volts | With Load; R = 27Ω; (RS485); see figure 1 |
| Change in Magnitude of Driver Differential Output Voltage for Complimentary States Driver Common-Mode Output Voltage | | | 0.2 | Volts | R = 27Ω or R = 50Ω; see figure 1 |
| Input High Voltage | 2.0 | | 3 | Volts | R = 27Ω or R = 50Ω; see figure 1 |
| Input Low Voltage | | | 0.8 | Volts | Applies to D |
| Input Current | | | ±10 | μA | Applies to D |
| Driver Short-Circuit Current | | | 250 | mA | -7V ≤ V _O ≤ +12V |
| V _{OUT} = HIGH | | | 250 | mA | -7V ≤ V _O ≤ +12V |
| V _{OUT} = LOW | | | | | |
| SP490E DRIVER | | | | | |
| AC Characteristics | | | | | |
| Maximum Data Rate | 10 | | | Mbps | |
| Driver Input to Output | | 30 | 60 | ns | t _{PLH} ; R _{DIFF} = 54Ω, C _{L1} = C _{L2} = 100pF; see figures 3 and 5 |
| Driver Input to Output | | 30 | 60 | ns | t _{PHL} ; R _{DIFF} = 54Ω, C _{L1} = C _{L2} = 100pF; see figures 3 and 5 |
| Driver Skew | | 5 | | ns | see figures 3 and 5, |
| Driver Rise or Fall Time | | 15 | 40 | ns | t _{SKEW} = t _{DPLH} - t _{DPHL} From 10% to 90%; R _{DIFF} = 54Ω, C _{L1} = C _{L2} = 100pF; see figures 3 and 5 |
| SP490E RECEIVER | | | | | |
| DC Characteristics | | | | | |
| Differential Input Threshold | -0.2 | | +0.2 | Volts | -7V ≤ V _{CM} ≤ 12V |
| Input Hysteresis | | 70 | | mV | V _{CM} = 0V |
| Output Voltage High | 3.5 | | | Volts | I _O = -4mA, V _{ID} = +200mV |
| Output Voltage Low | | | 0.4 | Volts | I _O = +4mA, V _{ID} = -200mV |
| Input Resistance | 12 | 15 | | kΩ | -7V ≤ V _{CM} ≤ 12V |
| Input Current (A, B); V _{IN} = 12V | | | ±1.0 | mA | V _{IN} = 12V |
| Input Current (A, B); V _{IN} = -7V | | | -0.8 | mA | V _{IN} = -7V |
| Short-Circuit Current | | | 85 | mA | 0V ≤ V _O ≤ V _{CC} |

ELECTRICAL CHARACTERISTICS

T_{MIN} to T_{MAX} and $V_{CC} = 5V \pm 5\%$ unless otherwise noted.

| PARAMETERS | MIN. | TYP. | MAX. | UNITS | CONDITIONS |
|---|-------|------|-------|-------------|--|
| SP490E RECEIVER | | | | | |
| AC Characteristics | | | | | |
| Maximum Data Rate | 10 | | | Mbps | |
| Receiver Input to Output | 20 | 45 | 100 | ns | t_{PLH}^1 ; $R_{DIFF} = 54\Omega$, $C_{L1} = C_{L2} = 100pF$; Figures 3 & 7 |
| Receiver Input to Output | 20 | 45 | 100 | ns | t_{PHL}^1 ; $R_{DIFF} = 54\Omega$, $C_{L1} = C_{L2} = 100pF$; Figures 3 & 7 |
| Diff. Receiver Skew $ t_{PLH} - t_{PHL} $ | | 13 | | ns | $R_{DIFF} = 54\Omega$; $C_{L1} = C_{L2} = 100pF$; Figures 3 & 7 |
| POWER REQUIREMENTS | | | | | |
| Supply Voltage | +4.75 | | +5.25 | Volts | |
| Supply Current | | 900 | | μA | |
| ENVIRONMENTAL AND MECHANICAL | | | | | |
| Operating Temperature | | | | | |
| Commercial (C) | 0 | | +70 | $^{\circ}C$ | |
| Industrial (E) | -40 | | +85 | $^{\circ}C$ | |
| Storage Temperature | -65 | | +150 | $^{\circ}C$ | |
| Package | | | | | |
| Plastic DIP (P) | | | | | |
| NSOIC (N) | | | | | |

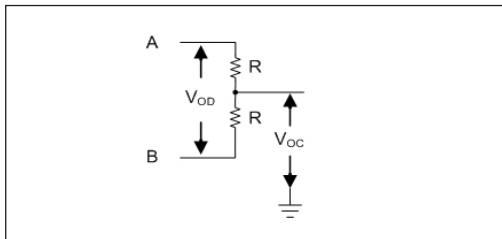


Figure 1. Driver DC Test Load Circuit

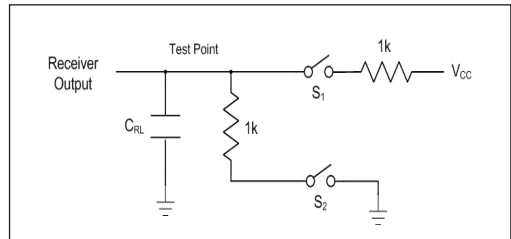


Figure 2. Receiver Timing Test Load Circuit

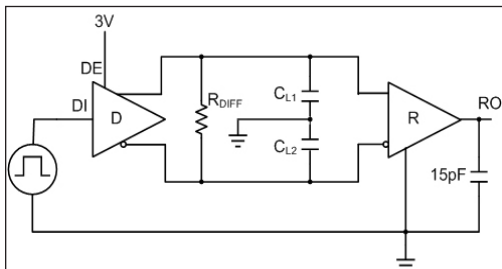


Figure 3. Driver/Receiver Timing Test Circuit

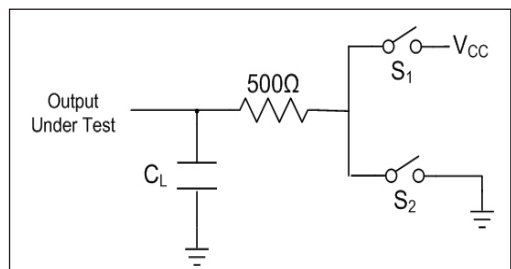


Figure 4. Driver Timing Test Load #2 Circuit

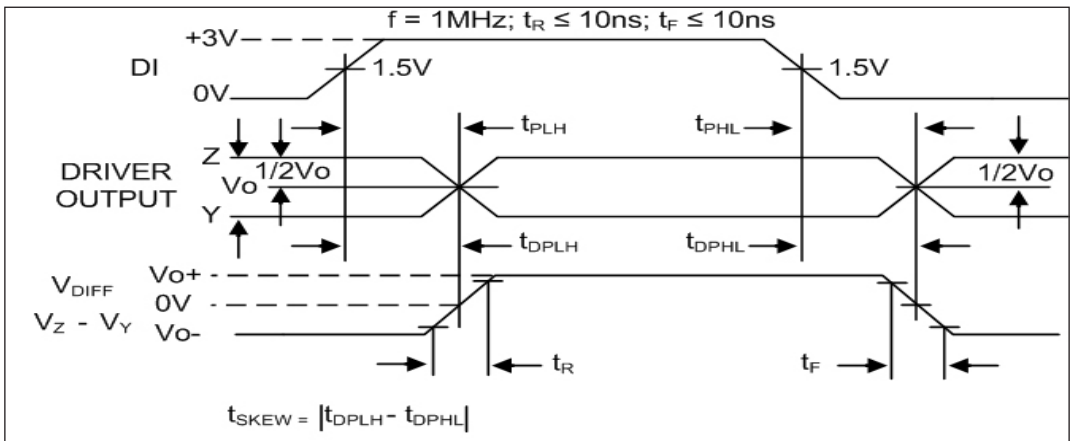


Figure 5. Driver Propagation Delays

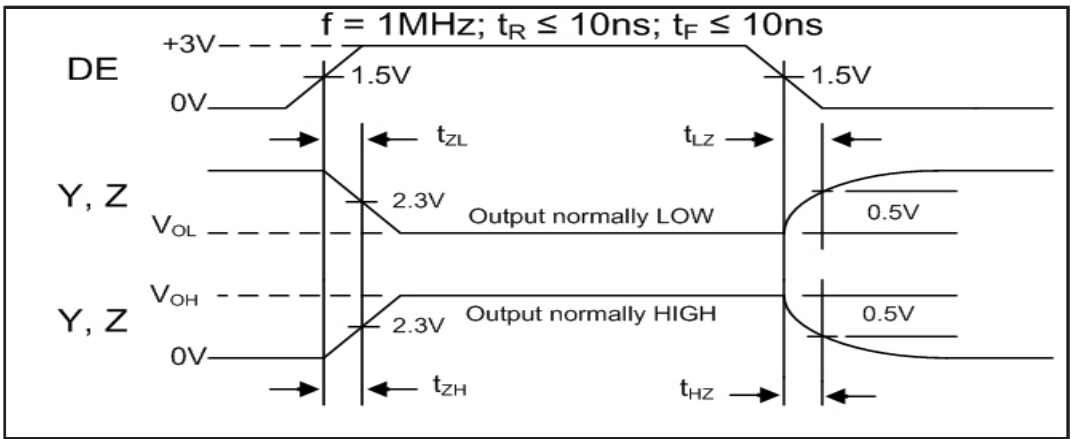


Figure 6. Driver Enable and Disable Times

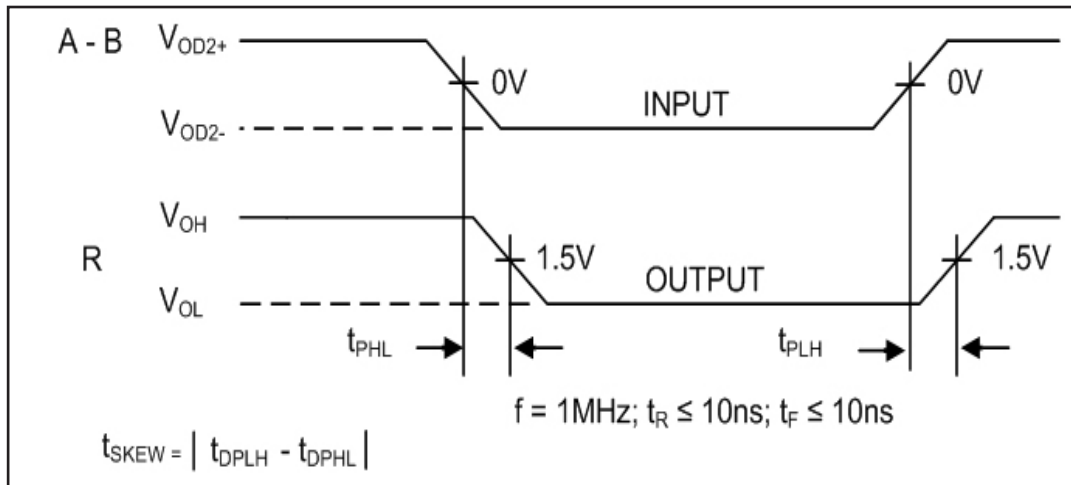


Figure 7. Receiver Propagation Delays

ABSOLUTE MAXIMUM RATINGS

These are stress ratings only and functional operation of the device at these ratings or any other above those indicated in the operation sections of the specifications below is not implied. Exposure to absolute maximum rating conditions for extended periods of time may affect reliability.

| | |
|--------------------------|----------------------------------|
| V _{CC} | +7V |
| Input Voltages | |
| Logic..... | -0.5V to (V _{CC} +0.5V) |
| Drivers..... | -0.5V to (V _{CC} +0.5V) |
| Receivers..... | ±14V |
| Output Voltages | |
| Logic..... | -0.5V to (V _{CC} +0.5V) |
| Drivers..... | ±14V |
| Receivers..... | -0.5V to (V _{CC} +0.5V) |
| Storage Temperature..... | -65°C to +150 |
| Power Dissipation..... | 1000mW |

ELECTRICAL CHARACTERISTICS

T_{MIN} to T_{MAX} and V_{CC} = 5V ± 5% unless otherwise noted.

| PARAMETERS | MIN. | TYP. | MAX. | UNITS | CONDITIONS |
|--|------|------|-----------------|-------|--|
| SP491E DRIVER | | | | | |
| DC Characteristics | | | | | |
| Differential Output Voltage | GND | | V _{CC} | Volts | Unloaded; R = ∞ ; see figure 1 |
| Differential Output Voltage | 2 | | V _{CC} | Volts | With Load; R = 50Ω; (RS422); see figure 1 |
| Differential Output Voltage | 1.5 | | V _{CC} | Volts | With Load; R = 27Ω; (RS485); see figure 1 |
| Change in Magnitude of Driver Differential Output Voltage for Complimentary States | | | 0.2 | Volts | R = 27Ω or R = 50Ω; see figure 1 |
| Driver Common-Mode Output Voltage | | | 3 | Volts | R = 27Ω or R = 50Ω; see figure 1 |
| Input High Voltage | 2.0 | | | Volts | Applies to D, \overline{RE} , DE |
| Input Low Voltage | | | 0.8 | Volts | Applies to D, \overline{RE} , DE |
| Input Current | | | ±10 | μA | Applies to D, \overline{RE} , DE |
| Driver Short-Circuit Current | | | 250 | mA | -7V ≤ V _O ≤ 12V |
| V _{OUT} = HIGH | | | 250 | mA | -7V ≤ V _O ≤ 12V |
| V _{OUT} = LOW | | | | | |
| SP491E DRIVER | | | | | |
| AC Characteristics | | | | | |
| Maximum Data Rate | 10 | | | Mbps | \overline{RE} = 5V, DE = 5V |
| Driver Input to Output | 30 | 30 | 60 | ns | t _{PLH} ; R _{DIFF} = 54Ω, C _{L1} = C _{L2} = 100pF; see figures 3 and 5 |
| Driver Input to Output | 30 | 30 | 60 | ns | t _{PFL} ; R _{DIFF} = 54Ω, C _{L1} = C _{L2} = 100pF; see figures 3 and 5 |
| Driver Skew | 5 | 5 | 10 | ns | t _{SKREW} = t _{DPLH} - t _{DPHL} ; see figures 3 and 5 |
| Driver Rise or Fall Time | 15 | 15 | 40 | ns | From 10% to 90%; R _{DIFF} = 54Ω, C _{L1} = C _{L2} = 100pF; see figures 3 and 5 |
| Driver Enable to Output High | 40 | 40 | 70 | ns | C _{L1} = C _{L2} = 100pF; see figures 4 and 6; S ₂ closed |
| Driver Enable to Output Low | 40 | 40 | 70 | ns | C _{L1} = C _{L2} = 100pF; see figures 4 and 6; S ₁ closed |
| Driver Disable Time from Low | 40 | 40 | 70 | ns | C _{L1} = C _{L2} = 100pF; see figures 4 and 6; S ₁ closed |
| Driver Disable Time from High | 40 | 40 | 70 | ns | C _{L1} = C _{L2} = 100pF; see figures 4 and 6; S ₂ closed |

ELECTRICAL CHARACTERISTICS

T_{MIN} to T_{MAX} and $V_{CC} = 5V \pm 5\%$ unless otherwise noted.

| PARAMETERS | MIN. | TYP. | MAX. | UNITS | CONDITIONS |
|--|-------|------|-----------|-------------|--|
| SP491E RECEIVER | | | | | |
| DC Characteristics | | | | | |
| Differential Input Threshold | -0.2 | | +0.2 | Volts | $-7V \leq V_{CM} \leq 12V$ |
| Input Hysteresis | | 70 | | mV | $V_{CM} = 0V$ |
| Output Voltage High | 3.5 | | | Volts | $I_O = -4mA, V_{ID} = +200mV$ |
| Output Voltage Low | | | 0.4 | Volts | $I_O = +4mA, V_{ID} = -200mV$ |
| Three State (high impedance) | | | | | |
| Output Current | | | ± 1 | μA | $0.4V \leq V_O \leq 2.4V, \overline{RE} = 5V$ |
| Input Resistance | 12 | 15 | | k Ω | $-7V \leq V_{CM} \leq 12V$ |
| Input Current (A, B); $V_{IN} = 12V$ | | | ± 1.0 | mA | $DE = 0V, V_{CC} = 0V$ or $5.25V, V_{IN} = 12V$ |
| Input Current (A, B); $V_{IN} = -7V$ | | | -0.8 | mA | $DE = 0V, V_{CC} = 0V$ or $5.25V, V_{IN} = -7V$ |
| Short-Circuit Current | | | 85 | mA | $0V \leq V_O \leq V_{CC}$ |
| SP491E RECEIVER | | | | | |
| AC Characteristics | | | | | |
| Maximum Data Rate | 10 | | | Mbps | $\overline{RE} = 0V$ |
| Receiver Input to Output | 20 | 45 | 100 | ns | $t_{PLH}, R_{DIFF} = 54\Omega,$ $C_{L1} = C_{L2} = 100pF$; Figures 3 & 7 |
| Receiver Input to Output | 20 | 45 | 100 | ns | $t_{PHL}, R_{DIFF} = 54\Omega,$ $C_{L1} = C_{L2} = 100pF$; Figures 3 & 7 |
| Diff. Receiver Skew $ t_{PLH} - t_{PHL} $ | | 13 | | ns | $R_{DIFF} = 54\Omega, C_{L1} = C_{L2} = 100pF$; Figures 3 & 7 |
| Receiver Enable to Output Low | | 45 | 70 | ns | $C_{RL} = 15pF$; Figures 2 and 8; S_1 closed |
| Receiver Enable to Output High | | 45 | 70 | ns | $C_{RL} = 15pF$; Figures 2 and 8; S_2 closed |
| Receiver Disable from Low | | 45 | 70 | ns | $C_{RL} = 15pF$; Figures 2 and 8; S_1 closed |
| Receiver Disable from High | | 45 | 70 | ns | $C_{RL} = 15pF$; Figures 2 and 8; S_2 closed |
| POWER REQUIREMENTS | | | | | |
| Supply Voltage | +4.75 | | +5.25 | Volts | |
| Supply Current | | 900 | | μA | $\overline{RE}, D = 0V$ or V_{CC} ; $DE = V_{CC}$ |
| SP491E ENVIRONMENTAL AND MECHANICAL | | | | | |
| Operating Temperature | | | | | |
| Commercial (C_{C}) | 0 | | +70 | $^{\circ}C$ | |
| Industrial (E_{I}) | -40 | | +85 | $^{\circ}C$ | |
| Storage Temperature | -65 | | +150 | $^{\circ}C$ | |
| Package | | | | | |
| Plastic DIP (P_{P}) | | | | | |
| NSOIC (N_{N}) | | | | | |

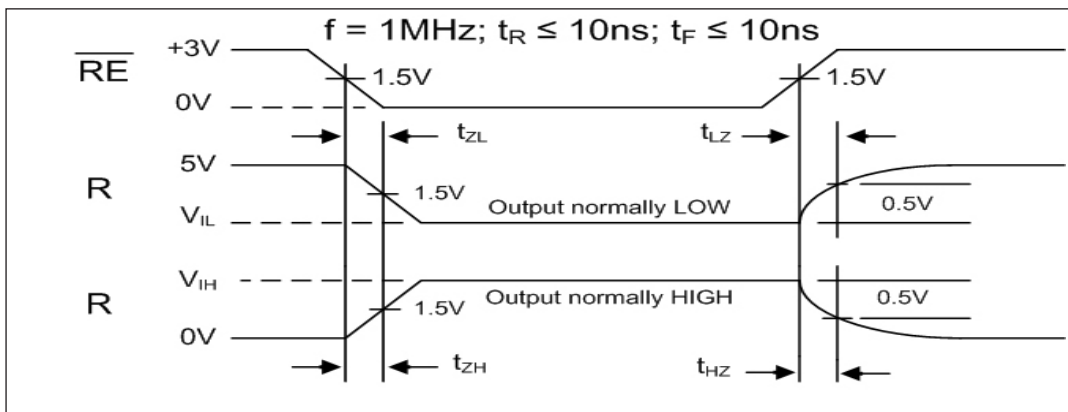


Figure 8. Receiver Enable and Disable Times

DESCRIPTION

The **SP490E** and **SP491E** are full-duplex differential transceivers that meet the requirements of RS-485 and RS-422. Fabricated with a **Exar** proprietary BiCMOS process, both products require a fraction of the power of older bipolar designs.

The RS-485 standard is ideal for multi-drop applications or for long-distance interfaces. RS-485 allows up to 32 drivers and 32 receivers to be connected to a data bus, making it an ideal choice for multi-drop applications. Since the cabling can be as long as 4,000 feet, RS-485 transceivers are equipped with a wide (-7V to +12V) common mode range to accommodate ground potential differences. Because RS-485 is a differential interface, data is virtually immune to noise in the transmission line.

Driver...

The drivers for both the **SP490E** and **SP491E** have differential outputs. The typical voltage output swing with no load will be 0 volts to +5 volts. With worst case loading of 54 Ω across the differential outputs, the driver can maintain greater than 1.5V voltage levels.

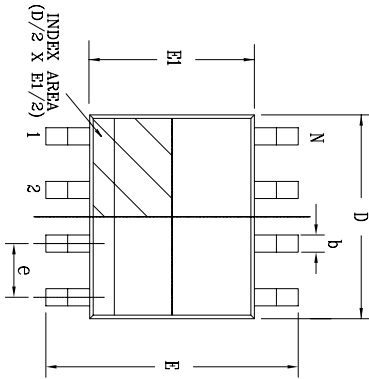
The driver of the **SP491E** has a driver enable control line which is active high. A logic high on DE (pin 4) of the **SP491E** will enable the differential driver outputs. A logic low on DE (pin 4) of the **SP491E** will tri-state the driver outputs. The **SP490E** does not have a driver enable.

Receiver...

The receivers for both the **SP490E** and **SP491E** have differential inputs with an input sensitivity as low as $\pm 200\text{mV}$. Input impedance of the receivers is typically 15k Ω (12k Ω minimum). A wide common mode range of -7V to +12V allows for large ground potential differences between systems. The receivers for both the **SP490E** and **SP491E** are equipped with the fail-safe feature. Fail-safe guarantees that the receiver output will be in a high state when the input is left unconnected.

The receiver of the **SP491E** has a receiver enable control line which is active low. A logic low on $\overline{\text{REB}}$ (pin 3) of the **SP491E** will enable the differential receiver. A logic high on REB (pin 3) of the **SP491E** will tri-state the receiver.

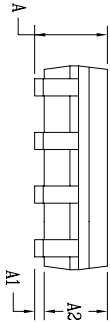
| REVISION HISTORY | | | |
|------------------|--------------------------------------|----------|-------|
| REV. | DESCRIPTION | DATE | APP'D |
| A | DRAWING ORIGINATOR | 08/16/05 | JL |
| B | DRAWING FORMAT MODIFICATION | 07/19/06 | JL |
| C | CHANGE DRAWING LOGO AND COMPANY NAME | 11/16/07 | JL |



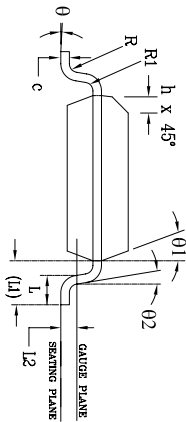
Top View

| SYMBOLS | JEDEC MS-012 | | | Variation AA | | |
|---------|------------------------------------|-----|------|--|-----|-------|
| | DIMENSIONS IN MM (Control Unit) | | | DIMENSIONS IN INCH (Reference Unit) | | |
| | MIN | NOM | MAX | MIN | NOM | MAX |
| A | 1.35 | — | 1.75 | 0.053 | — | 0.069 |
| A1 | 0.10 | — | 0.25 | 0.004 | — | 0.010 |
| A2 | 1.25 | — | 1.65 | 0.049 | — | 0.065 |
| b | 0.31 | — | 0.51 | 0.012 | — | 0.020 |
| c | 0.17 | — | 0.25 | 0.007 | — | 0.010 |
| E | 6.00 BSC | | | 0.236 BSC | | |
| E1 | 3.90 BSC | | | 0.154 BSC | | |
| e | 0.25 | — | 0.50 | 0.010 | — | 0.020 |
| h | 0.40 | — | 1.27 | 0.016 | — | 0.050 |
| L | 1.04 REF | | | 0.041 REF | | |
| L2 | 0.25 BSC | | | 0.010 BSC | | |
| R | 0.07 | — | — | 0.003 | — | — |
| R1 | 0.07 | — | — | 0.003 | — | — |
| θ | 0° | — | 8° | 0° | — | 8° |
| θ1 | 5° | — | 15° | 5° | — | 15° |
| θ2 | 0° | — | — | 0° | — | — |
| D | 4.90 BSC | | | 0.193 BSC | | |
| N | 8 | | | 8 | | |

Side View

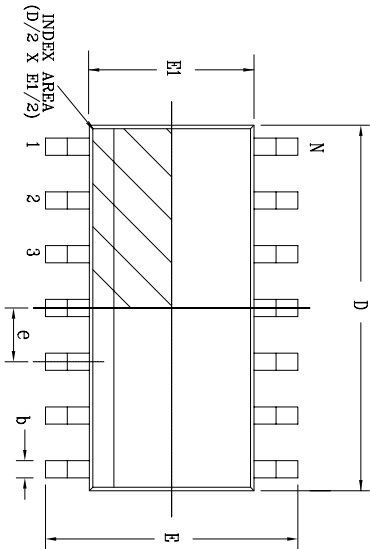


Front View

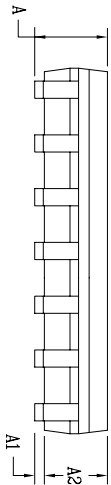


| | | | |
|---------------------|-----------------------|---|---------------|
| | | EXAR CORPORATION Repeating Connectivity | |
| | | | |
| Packaging Approval: | By: JL Date: 11/16/07 | Drawing No.: | Revision: C |
| | | 8-PIN NSOIC | Sheet: 1 OF 1 |

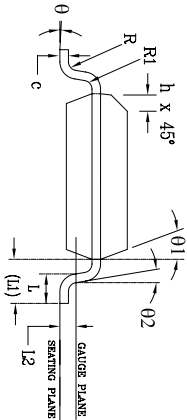
| REVISION HISTORY | | | |
|------------------|--------------------------------------|----------|-------|
| REV. | DESCRIPTION | DATE | APP'D |
| A | DRAWING ORIGINATOR | 04/17/06 | JL |
| B | CHANGE DRAWING LOGO AND COMPANY NAME | 11/21/07 | JL |



Top View



Side View

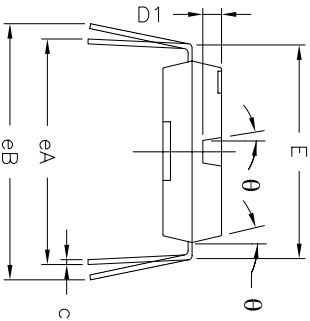
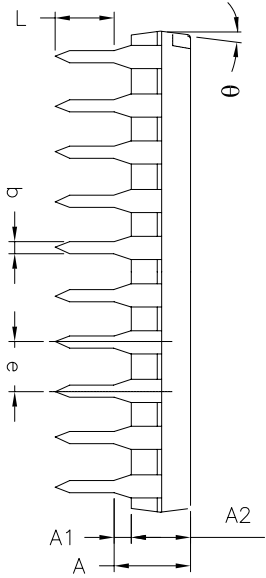
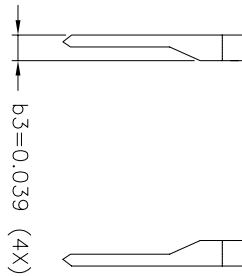
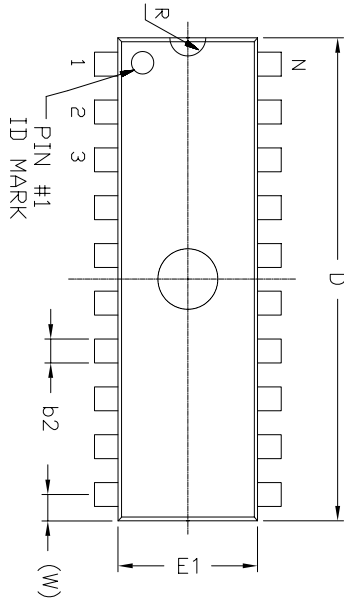


Front View

| 14 Pin SOICN | | JEDEC MS-012 | | Variation AB | | |
|--------------|------------------------------------|--------------|------|--|-------|-------|
| SYMBOLS | DIMENSIONS IN MM (Control Unit) | | | DIMENSIONS IN INCH (Reference Unit) | | |
| | MIN | NOM | MAX | MIN | NOM | MAX |
| A | 1.35 | — | 1.75 | 0.053 | — | 0.069 |
| A1 | 0.10 | — | 0.25 | 0.004 | — | 0.010 |
| A2 | 1.25 | — | 1.65 | 0.049 | — | 0.065 |
| b | 0.31 | — | 0.51 | 0.012 | — | 0.020 |
| c | 0.17 | — | 0.25 | 0.007 | — | 0.010 |
| E | 6.00 | BSC | — | 0.236 | BSC | — |
| E1 | 3.90 | BSC | — | 0.154 | BSC | — |
| e | 1.27 | BSC | — | 0.050 | BSC | — |
| h | 0.25 | — | 0.50 | 0.010 | — | 0.020 |
| L | 0.40 | — | 1.27 | 0.016 | — | 0.050 |
| L1 | — | 1.04 | REF | — | 0.041 | REF |
| L2 | — | 0.25 | BSC | — | 0.010 | BSC |
| R | 0.07 | — | — | 0.003 | — | — |
| R1 | 0.07 | — | — | 0.003 | — | — |
| θ | 0° | — | 8° | 0° | — | 8° |
| $\theta1$ | 5° | — | 15° | 5° | — | 15° |
| $\theta2$ | 0° | — | — | 0° | — | — |
| D | 8.65 | BSC | — | 0.341 | BSC | — |
| N | 14 | — | — | 14 | — | — |


| | | | |
|---------------------|--------------|------------------------------|---------------|
| | | EXAR CORPORATION | |
| | | 14 PIN SOICN PACKAGE OUTLINE | |
| Packaging Approval: | By: JL | Date: 11/21/07 | Revision: B |
| Drawing No: | 14-PIN SOICN | | Sheet: 1 OF 1 |

REMARKS:
FOR 8LD AND 16LD
ALL END LEADS (4X)
ARE HALF LEAD TYPES



| 8 Pin PDIP JEDEC MS-001 Variation BA | | DIMENSIONS IN INCH (Control Unit) | | | | DIMENSIONS IN MM (Reference Unit) | | | |
|--------------------------------------|-----------|-----------------------------------|-------|----------|------|-----------------------------------|--|--|--|
| SYMBOLS | MIN | NOM | MAX | MIN | NOM | MAX | | | |
| A | — | — | 0.210 | — | — | 5.33 | | | |
| A1 | 0.015 | — | — | 0.38 | — | — | | | |
| A2 | 0.115 | 0.130 | 0.195 | 2.92 | 3.30 | 4.95 | | | |
| b | 0.014 | 0.018 | 0.022 | 0.36 | 0.46 | 0.56 | | | |
| b2 | 0.045 | 0.060 | 0.070 | 1.14 | 1.52 | 1.78 | | | |
| c | 0.008 | 0.010 | 0.014 | 0.20 | 0.25 | 0.36 | | | |
| D1 | 0.030 | — | 0.060 | 0.76 | — | 1.52 | | | |
| E | 0.300 | 0.310 | 0.325 | 7.62 | 7.87 | 8.26 | | | |
| E1 | 0.240 | 0.250 | 0.280 | 6.10 | 6.35 | 7.11 | | | |
| e | 0.100 BSC | | | 2.54 BSC | | | | | |
| eA | 0.300 BSC | | | 7.62 BSC | | | | | |
| eB | — | — | 0.430 | — | — | 10.92 | | | |
| L | 0.115 | 0.130 | 0.150 | 2.92 | 3.30 | 3.81 | | | |
| W | 0.075 REF | | | 1.91 REF | | | | | |
| R | 0.030 BSC | | | 0.76 BSC | | | | | |
| theta | 4° | 7° | 10° | 4° | 7° | 10° | | | |
| D | 0.355 | 0.365 | 0.400 | 9.02 | 9.27 | 10.16 | | | |
| N | 8 | | | 8 | | | | | |

| REVISION HISTORY | | | |
|------------------|--------------------------------------|----------|-------|
| REV. | DESCRIPTION | DATE | APP'D |
| A | DRAWING ORIGINATOR | 04/26/06 | JL |
| B | CHANGE DRAWING LOGO AND COMPANY NAME | 11/28/07 | JL |



EXAR CORPORATION

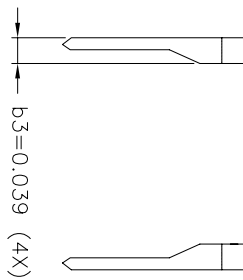
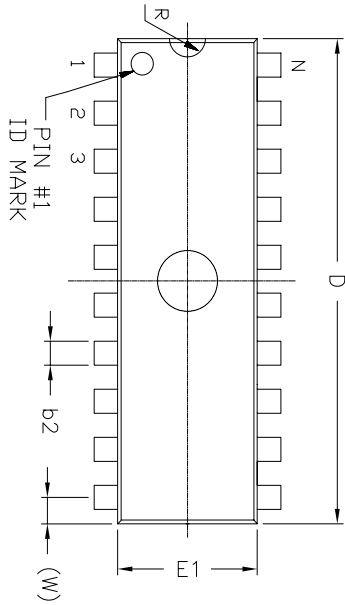
8 PIN PDIP PACKAGE OUTLINE

Br: JL Date: 11/28/07

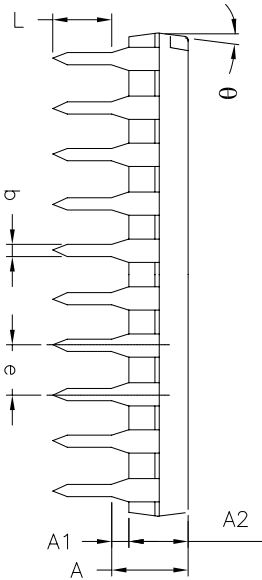
Packaging Approval: Drawing No: 8-PIN PDIP

Revision: B Sheet: 1 OF 1

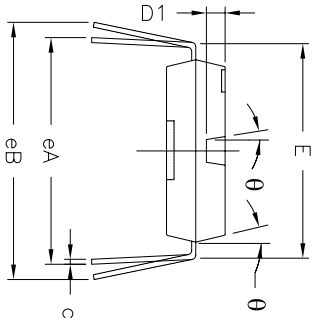
REMARKS:
FOR 8LD AND 16LD
ALL END LEADS (4X)
ARE HALF LEAD TYPES



Top View




Side View



Front View

| 14 Pin PDIP JEDEC MS-001 Variation AA | | | | | | |
|---------------------------------------|--------------------------------------|-------|-------|--------------------------------------|-------|-------|
| SYMBOLS | DIMENSIONS IN INCH (Control Unit) | | | DIMENSIONS IN MM (Reference Unit) | | |
| | MIN | NOM | MAX | MIN | NOM | MAX |
| A | — | 0.210 | — | — | — | 5.33 |
| A1 | 0.015 | — | 0.38 | — | — | — |
| A2 | 0.115 | 0.130 | 0.195 | 2.92 | 3.30 | 4.95 |
| b | 0.014 | 0.018 | 0.022 | 0.36 | 0.46 | 0.56 |
| b2 | 0.045 | 0.060 | 0.070 | 1.14 | 1.52 | 1.78 |
| c | 0.008 | 0.010 | 0.014 | 0.20 | 0.25 | 0.36 |
| D1 | 0.030 | — | 0.060 | 0.76 | — | 1.52 |
| E | 0.300 | 0.310 | 0.325 | 7.62 | 7.87 | 8.26 |
| E1 | 0.240 | 0.250 | 0.280 | 6.10 | 6.35 | 7.11 |
| e | 0.100 | BSC | — | 2.54 | BSC | — |
| eA | 0.300 | BSC | — | 7.62 | BSC | — |
| eB | — | 0.430 | — | — | 10.92 | — |
| L | 0.115 | 0.130 | 0.150 | 2.92 | 3.30 | 3.81 |
| W | 0.075 | REF | — | 1.91 | REF | — |
| R | 0.030 | BSC | — | 0.76 | BSC | — |
| theta | 4° | 7° | 10° | 4° | 7° | 10° |
| D | 0.735 | 0.750 | 0.775 | 18.67 | 19.05 | 19.69 |
| N | 14 | 14 | 14 | 14 | 14 | 14 |

| REVISION HISTORY | | | |
|------------------|--------------------------------------|----------|-------|
| REV. | DISCRIPTION | DATE | APP'D |
| A | DRAWING ORIGINATION | 04/26/06 | JL |
| B | CHANGE DRAWING LOGO AND COMPANY NAME | 11/21/07 | JL |

| | | | |
|---|----------------|-----------------------------|-------------|
|  | | EXAR CORPORATION | |
| Packaging Approval: | | Drawing No: | |
| By: JL | Date: 11/21/07 | 14 PIN PDIP PACKAGE OUTLINE | 14-PIN PDIP |
| Revision: B | | Sheet: 1 OF 1 | |

| Model | Temperature Range | Package |
|--------------------|---------------------|--------------|
| SP490ECN-L..... | 0°C to +70°C | 8-Pin NSOIC |
| SP490ECN-L/TR..... | 0°C to +70°C | 8-Pin NSOIC |
| SP490ECP-L..... | 0°C to +70°C | 8-Pin PDIP |
| SP490EEN-L..... | -40°C to +85°C..... | 8-Pin NSOIC |
| SP490EEN-L/TR..... | -40°C to +85°C..... | 8-Pin NSOIC |
| SP490EEP-L..... | -40°C to +85°C..... | 8-Pin PDIP |
| SP491ECN-L..... | 0°C to +70°C | 14-Pin NSOIC |
| SP491ECN-L/TR..... | 0°C to +70°C | 14-Pin NSOIC |
| SP491ECP-L..... | 0°C to +70°C | 14-Pin PDIP |
| SP491EEN-L..... | -40°C to +85°C..... | 14-Pin NSOIC |
| SP491EEN-L/TR..... | -40°C to +85°C..... | 14-Pin NSOIC |
| SP491EEP-L..... | -40°C to +85°C..... | 14-Pin PDIP |

Note: /TR = Tape and Reel

REVISION HISTORY

| Date | Revision | Description |
|----------|----------|--|
| 2000 | 14 | Sipex Legacy Data Sheet |
| May 2011 | 1.0.0 | Convert to Exar format. Remove driver propagation delay minimum and driver rise/fall time minimum entry for SP490E and SP491E. Update ESD rating to IEC61000-4-2. Update ordering information. |
| May 2013 | 1.0.1 | Correct type errors per PCN 13-0503-01 ECN: 1322-03 05/29/13 |

Notice

EXAR Corporation reserves the right to make changes to any products contained in this publication in order to improve design, performance or reliability. EXAR Corporation assumes no representation that the circuits are free of patent infringement. Charts and schedules contained herein are only for illustration purposes and may vary depending upon a user's specific application. While the information in this publication has been carefully checked; no responsibility, however, is assumed for inaccuracies.

EXAR Corporation does not recommend the use of any of its products in life support applications where the failure or malfunction of the product can reasonably be expected to cause failure of the life support system or to significantly affect its safety or effectiveness. Products are not authorized for use in such applications unless EXAR Corporation receives, in writing, assurances to its satisfaction that: (a) the risk of injury or damage has been minimized ; (b) the user assumes all such risks; (c) potential liability of EXAR Corporation is adequately protected under the circumstances.

Copyright 2013 EXAR Corporation

Datasheet May 2013

Send your serial transceiver technical inquiry with technical details to: serialtechsupport@exar.com

Reproduction, in part or whole, without the prior written consent of EXAR Corporation is prohibited.