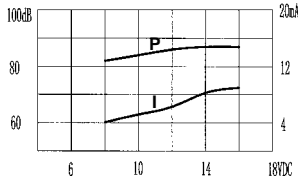
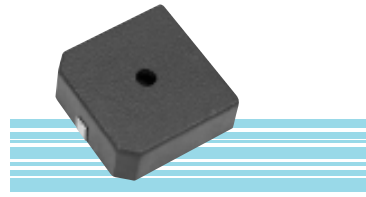


SMT Buzzer

SPA-1712 series SMT Buzzer

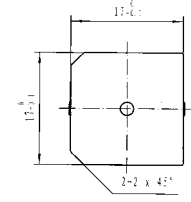


Model No	SPA-1712
Rated Voltage	12VDC
Operating Voltage	1.5~16 VDC
Max. Rated Current	10mA at 12VDC
Min. Sound Pressure Level	85dB / 12VDC/ 10cm
Resonant Frequency	4.0±0.5KHz
Operating Temperature	-20~+80jæ
Tone Nature	Continuous
Weight	2 g

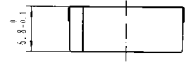


color Black
PPS Housing Material
SMT Terminal

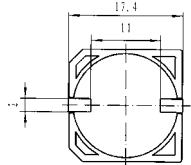
DIMENSIONS



Top View



Side View

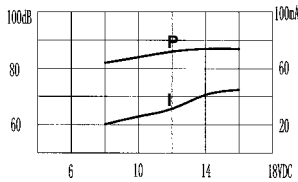


Bottom View

all dimensions are in mm

* Value applying at rated voltage

SMA-1200B series SMT Buzzer

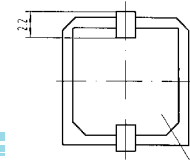


Model No	SMA-1201B	SMA-1205B	SMA-1212B
Rated Voltage	1.5V	5V	12V
Operating Voltage	1.4~3V	4~7V	8~15V
Max. Rated Current	20mA	40mA	40mA
Min. Sound Pressure Level	80dB/10cm	87dB/10cm	90dB/10cm
Resonant Frequency	2300Hz±300Hz	2300Hz±300Hz	2300Hz±300Hz
Operating Temperature	-20~+70jæ	-20~+70jæ	-20~+70jæ
Tone Nature	Continuous	Continuous	Continuous
Weight	2 g	2 g	2 g

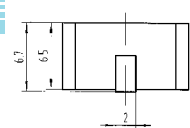


color black
PPS Housing Material
SMT Terminal

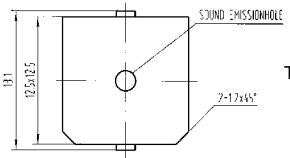
DIMENSIONS



Bottom View



Side View

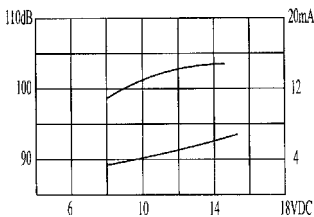


Top View

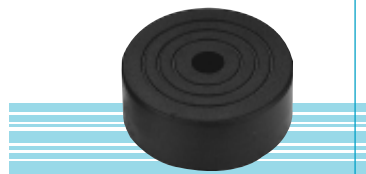
all dimensions are in mm

* Value applying at rated voltage

KPI-4000P series Piezo buzzer

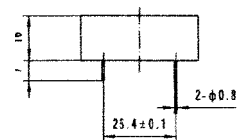


Model No	KPI-4000P
Rated Voltage	12VDC
Operating Voltage	3-20VDC
Max. Rated Current	12mA at 12VDC
Min. Sound Pressure Level	98dB at 12VDC/30cm
Tone Nature	Continuous
Resonant Frequency	2.8±0.5KHz
Housing Material/Color	ABS/Black
Operating Temperature	-20jæ~+60jæ
Store Temperature	-30jæ~+70jæ
Weight	10g

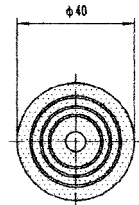


color Black
ABS Housing Material
Lead Terminal

DIMENSIONS



Side View



Top View

all dimensions are in mm

* Value applying at rated voltage