



Schottky Barrier Rectifiers

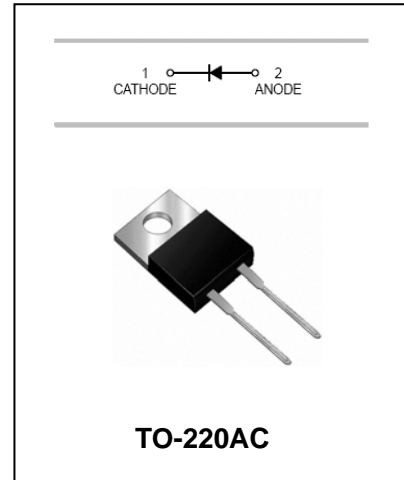
SR1020...SR10100

FEATURES

- Metal-Semiconductor Junction With Guard Ring
- Epitaxial Construction.
- For Use In Low Voltage,High Frequency Inverters,Free Wheeling,and Polarity Protection Applications.
- Low Forward Voltage Drop,Low Switchoing Losses.
- High Surge Capability.
- The Plastic Material Carries U/L Recognition 94V-0.



Lead-free



MAXIMUM RATING operating temperature range applies unless otherwise specified

Symbol	Parameter	SR 1020	SR 1030	SR 1040	SR 1050	SR 1060	SR 1080	SR 10100	Unit
V_{RRM}	Recurrent Peak Reverse Voltage	20	30	40	50	60	80	100	V
V_{RMS}	RMS Reverse Voltage	14	21	28	35	42	56	70	V
V_{DC}	DC Blocking Voltage	20	30	40	50	60	80	100	V
$I_{F(AV)}$	Average Forward Rectified Current	10							A
I_{FSM}	Forward Surge Current 8.3ms Single Half-sine-wave Superimosed on Rated Load	200					150		A
T_j	Operating Junction Temperature Range	-55 to +125					-55 to +150		°C
T_{stg}	Storage Temperature Range	-55 to +150							°C

ELECTRICAL CHARACTERISTICS @ $T_a=25^\circ\text{C}$ unless otherwise specified

Parameter	Symbol	Test conditions	SR1020- SR1040	SR1050- SR1060	SR1080- SR10100	UNIT
			MAX			
Reverse Current	I_R	$V_R=V_{RRM}, T_A=25^\circ\text{C}$ $V_R=V_{RRM}, T_A=100^\circ\text{C}$	0.5 15	0.5 25	0.1 50 @ $T_A=125^\circ\text{C}$	mA
Forward Voltage	V_F	$I_F=10\text{A}$ (Note 1)	0.65	0.75	0.85	V

Note:1.Pulse test:300us pulse width,1% duty cycle.



Schottky Barrier Rectifiers

SR1020...SR10100

TYPICAL CHARACTERISTICS @ Ta=25°C unless otherwise specified

FIG.1 – FORWARD CURRENT DERATING CURVE

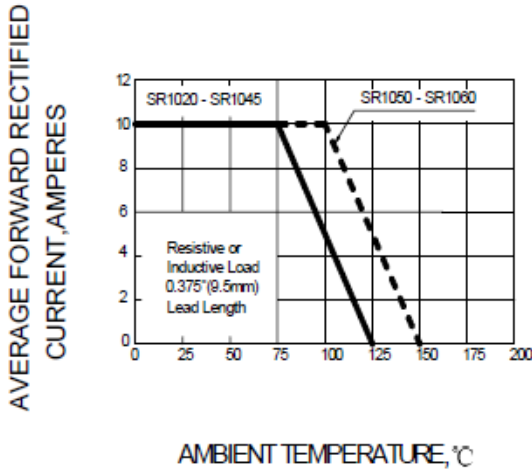


FIG.2 – PEAK FORWARD SURGE CURRENT

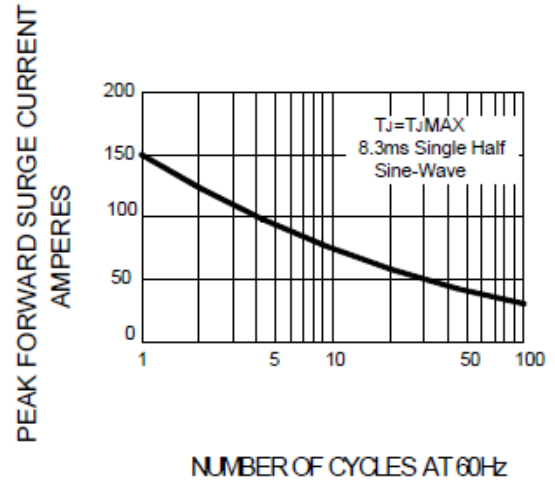


FIG.3 – TYPICAL INSTANTANEOUS FORWARD CHARACTERISTICS

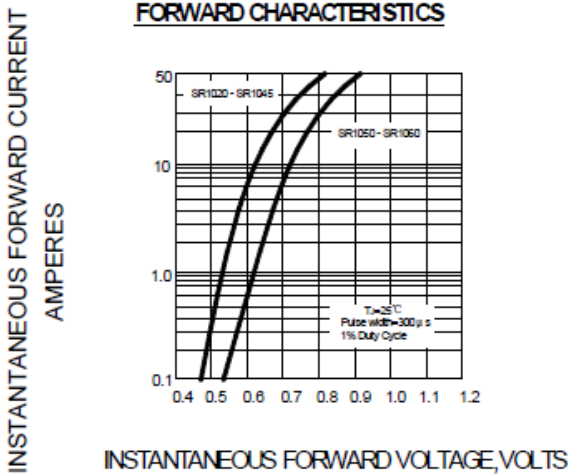
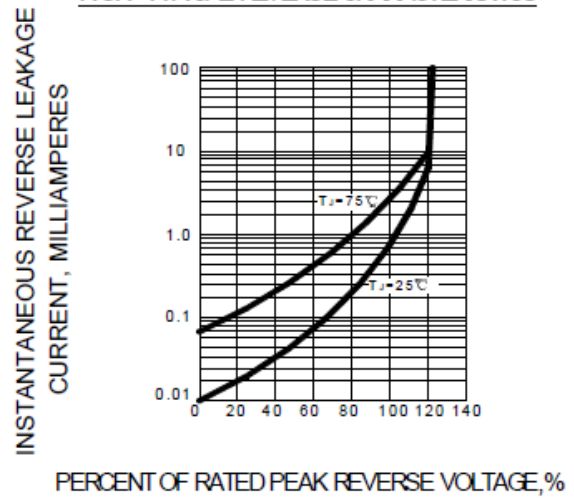


FIG.4 – TYPICAL REVERSE CHARACTERISTICS





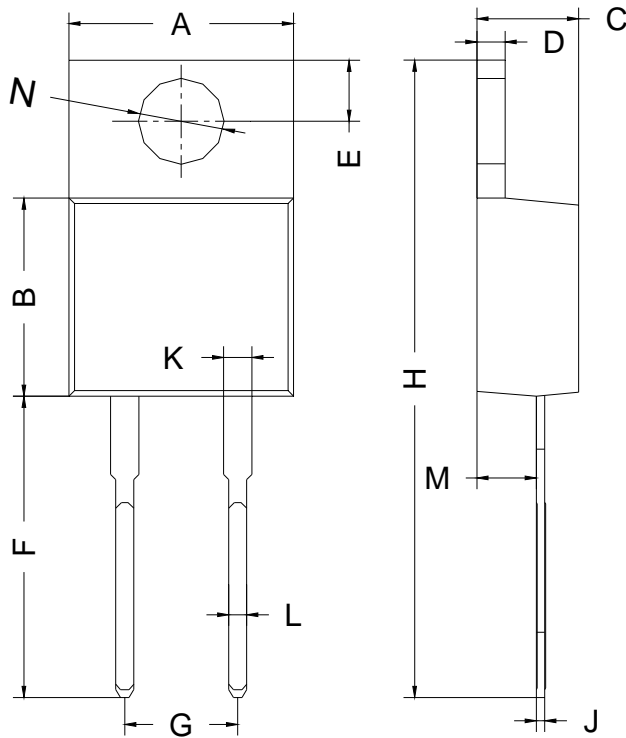
Schottky Barrier Rectifiers

SR1020...SR10100

PACKAGE OUTLINE

Plastic surface mounted package

TO-220AC



TO-220AC		
Dim	Min	Max
A	9.80	10.30
B	8.70	9.10
C	4.57 Typical	
D	1.27 Typical	
E	2.64	2.84
F	13.14	13.74
G	4.98	5.18
H	28.03	28.83
J	0.38 Typical	
K	1.22	1.32
L	0.71	0.91
M	2.50 Typical	
N	3.86 Typical	
All Dimensions in mm		