

Schottky Barrier Rectifiers

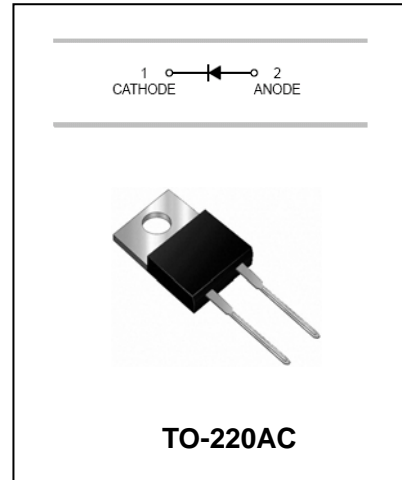
SR5150...SR5200

FEATURES

- Metal-Semiconductor Junction With Guard Ring.
- Epitaxial Construction.
- For Use In Low Voltage,High Frequency Inverters,Free Wheeling,and Polarity Protection Applications.
- Low Forward Voltage Drop,Low Switching Losses.
- High Surge Capability.
- The Plastic Material Carries U/L Recognition 94V-0.



Lead-free



MAXIMUM RATING operating temperature range applies unless otherwise specified

Symbol	Parameter	SR5150	SR5200	Unit
V_{RRM}	Recurrent Peak Reverse Voltage	150	200	V
V_{RMS}	RMS Reverse Voltage	105	140	V
V_{DC}	DC Blocking Voltage	150	200	V
$I_{F(AV)}$	Average Forward Rectified Current	5		A
I_{FSM}	Forward Surge Current 8.3ms Single Half Sine-wave Superimosed on Rated Load	150		A
T_j T_{stg}	Operating and Storage Temperature Range	-55 to +150		°C

ELECTRICAL CHARACTERISTICS @ $T_a=25^\circ\text{C}$ unless otherwise specified

Parameter	Symbol	Test conditions	SR5150	SR5200	UNIT
			MAX		
Reverse Current	I_R	$V_R=V_{RRM}, T_A=25^\circ\text{C}$ $V_R=V_{RRM}, T_A=125^\circ\text{C}$	0.1 50		mA
Forward Voltage	V_F	$I_F=5\text{A}$	0.90	0.95	V

Note:1.Pulse test:300us pulse width,1% duty cycle.



Schottky Barrier Rectifiers

SR5150...SR5200

TYPICAL CHARACTERISTICS @ Ta=25°C unless otherwise specified

FIG.1 – FORWARD CURRENT DERATING CURVE

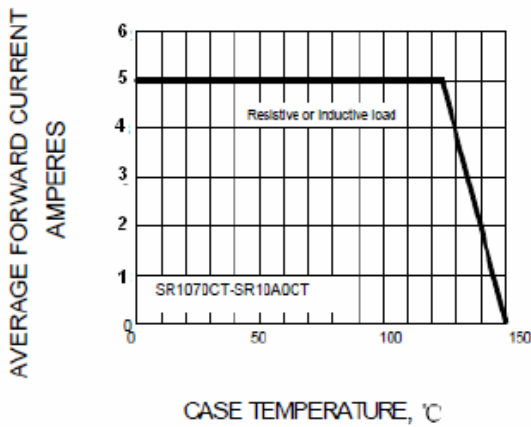
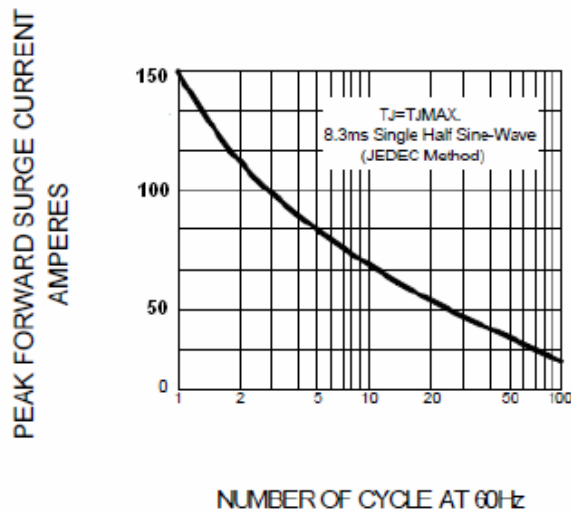
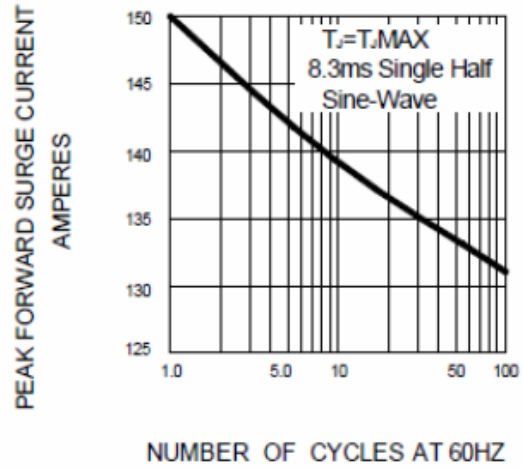


FIG.2 -- PEAK FORWARD SURGE CURRENT





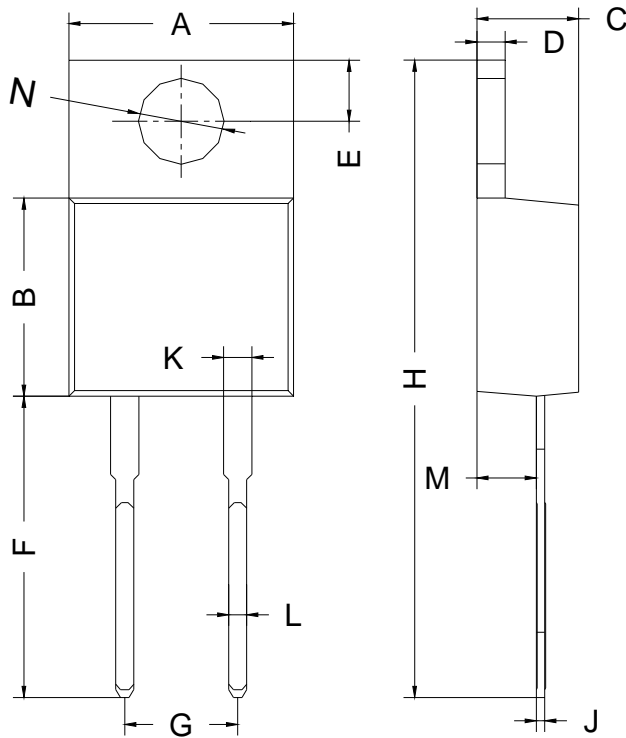
Schottky Barrier Rectifiers

SR5150...SR5200

PACKAGE OUTLINE

Plastic surface mounted package

TO-220AC



TO-220AC		
Dim	Min	Max
A	9.80	10.30
B	8.70	9.10
C	4.57 Typical	
D	1.27 Typical	
E	2.64	2.84
F	13.14	13.74
G	4.98	5.18
H	28.03	28.83
J	0.38 Typical	
K	1.22	1.32
L	0.71	0.91
M	2.50 Typical	
N	3.86 Typical	
All Dimensions in mm		