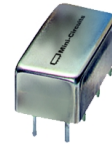


Plug-In Frequency Mixer

SRA-1H

Level 17 (LO Power +17dBm) .5 to 500 MHz



CASE STYLE: A01
PRICE: \$22.95 ea. QTY (1-9)

Features

- excellent conversion loss, 6.01 dB typ.
- high L-R isolation, 45 dB typ., L-I isolation, 40 dB typ.
- rugged welded construction
- hermetic

Applications

- VHF/UHF
- instrumentation
- defense & federal communications

Mixer Electrical Specifications

MODEL NO.	FREQUENCY (MHz)		CONVERSION LOSS (dB)				LO-RF ISOLATION (dB)						LO-IF ISOLATION (dB)					
	LO/RF		Mid-Band		Total		L		M		U		L		M		U	
	$f_L - f_U$	IF	\bar{x}	σ	Max.	Max.	Typ. Min.	Typ. Min.	Typ. Min.	Typ. Min.	Typ. Min.	Typ. Min.	Typ. Min.	Typ. Min.	Typ. Min.	Typ. Min.	Typ. Min.	
SRA-1H	.5-500	DC-500	6.01	.08	7.5	8.5	55	45	45	30	35	25	45	35	40	30	30	20

¹ dB COMP.: +10 dBm typ.
L = low range [f_L to $10 f_L$] M = mid range [$10 f_L$ to $f_U/2$] U = upper range [$f_U/2$ to f_U]
m = mid band [$2f_L$ to $f_U/2$]

Pin Connections

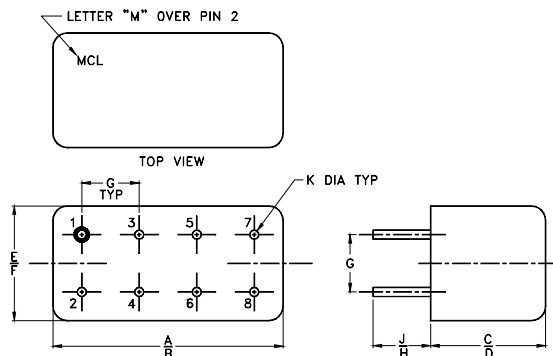
PORT	e
LO	8
RF	1
IF	3,4 [^]
GNDEXT.	2,5,6,7
CASEGND	2

[^]pins must be connected together externally

Maximum Ratings

Operating Temperature	-55°C to 100°C
Storage Temperature	-55°C to 100°C
RF Power	200mW
IF Current	40mA

Outline Drawing

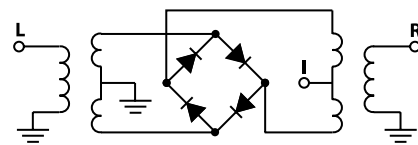


NOTE: BLUE BEAD INDICATES PIN 1.
PIN NUMBERS DO NOT APPEAR ON UNIT,
FOR REFERENCE ONLY.

Outline Dimensions (inch)

A	B	C	D	E	F	G	H	J	K	wt.
.770	.800	.385	.400	.370	.400	.200	.20	.14	.031	grams
19.56	20.32	9.78	10.16	9.40	10.16	5.08	5.08	3.56	.79	5.2

electrical schematic



Distribution Centers NORTH AMERICA 800-654-7949 • 417-335-5935 • Fax 417-335-5945 • EUROPE 44-1252-832600 • Fax 44-1252-837010

Mini-Circuits ISO 9001 & ISO 14001 Certified

INTERNET <http://www.minicircuits.com>

P.O. Box 350166, Brooklyn, New York 11235-0003 (718) 934-4500 Fax (718) 332-4661

REV. OR
M93648
SRA-1H
DJ/TD/CP
040610
Page 1 of 2

Typical Performance Data

Frequency		Conversion Loss (dB)	Isolation L-R (dB)	Isolation L-I (dB)	VSWR RF port (:1)	VSWR LO port (:1)
RF MHz	LO MHz	LO +17dBm	LO +17dBm	LO +17dBm	LO +17dBm	LO +17dBm
0.50	30.50	7.38	64.73	58.33	1.26	2.93
2.00	32.00	6.29	62.80	57.04	1.13	2.80
10.00	40.00	5.89	58.80	53.94	1.08	2.61
20.00	50.00	5.93	51.76	47.62	1.09	2.57
50.00	80.00	5.91	48.13	44.45	1.10	2.57
81.07	51.07	5.84	43.91	40.75	1.12	2.72
100.00	70.00	5.82	42.51	39.43	1.12	2.57
129.40	99.40	5.85	41.76	38.65	1.14	2.45
161.63	131.63	5.90	39.94	37.09	1.16	2.59
193.86	163.86	5.98	38.70	35.65	1.17	2.39
226.08	196.08	6.10	38.27	35.36	1.18	2.34
258.31	228.31	6.01	37.16	34.23	1.24	2.56
274.42	244.42	5.97	36.62	33.23	1.26	2.43
306.65	276.65	6.07	35.81	32.42	1.26	2.47
338.87	308.87	6.16	34.78	30.96	1.33	2.54
371.10	341.10	6.34	33.92	29.51	1.34	2.45
403.33	373.33	6.42	33.83	28.51	1.36	2.59
435.55	405.55	6.60	34.53	28.16	1.39	2.55
467.78	437.78	6.76	35.55	28.51	1.40	2.52
500.00	470.00	6.85	34.97	28.71	1.42	2.52

Performance Charts

