

## ST2360 Series

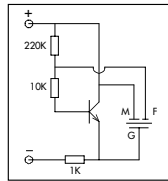
Specifications:

| Parameters                         | Units | ST2360AAP  |
|------------------------------------|-------|------------|
| ▶ Min Sound Pressure Level at 10cm | dBA   | 90         |
| Rated Voltage                      | Vdc   | 12         |
| Operating Voltage                  | Vdc   | 3 - 20     |
| Resonance Frequency                | Hz    | 3600 ± 500 |
| ▶ Typical Operating Current        | mA    | 15         |
| Operating Temperature              | °C    | -20 - +60  |
| Case Material                      | -     | ABS        |
| Weight                             | g     | 3.0        |

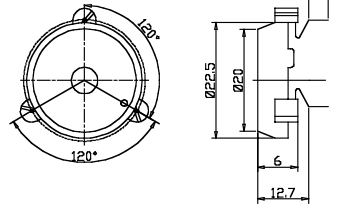


Unit: mm • Tolerance: ±0.5mm

▶ Value applying rated voltage with recommended circuit



Recommended Circuit



## ST2310 Series

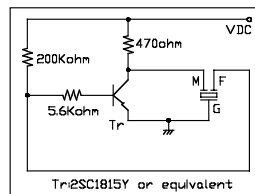
Specifications:

| Parameters                         | Units | ST2310ANP  |
|------------------------------------|-------|------------|
| ▶ Min Sound Pressure Level at 10cm | dBA   | 95         |
| Rated Voltage                      | Vdc   | 9          |
| Operating Voltage                  | Vdc   | 6 - 15     |
| Resonance Frequency                | Hz    | 3000 ± 500 |
| ▶ Typical Operating Current        | mA    | 8          |
| Operating Temperature              | °C    | -40 - +85  |
| Case Material                      | -     | Noryl      |
| Weight                             | g     | 3.4        |

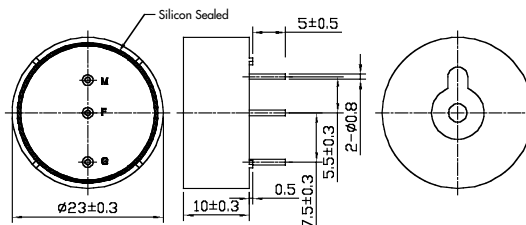


Unit: mm • Tolerance: ±0.5mm

▶ Value applying rated voltage with recommended circuit



Recommended Circuit



## ST2411 Series

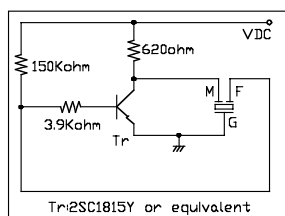
Specifications:

| Parameters                         | Units | ST2411ANP  |
|------------------------------------|-------|------------|
| ▶ Min Sound Pressure Level at 10cm | dBA   | 90         |
| Rated Voltage                      | Vdc   | 12         |
| Operating Voltage                  | Vdc   | 3 - 25     |
| Resonance Frequency                | Hz    | 3800 ± 500 |
| ▶ Typical Operating Current        | mA    | 12         |
| Operating Temperature              | °C    | -40 - +85  |
| Case Material                      | -     | Noryl      |
| Weight                             | g     | 3.3        |



Unit: mm • Tolerance: ±0.5mm

▶ Value applying rated voltage with recommended circuit



Recommended Circuit

