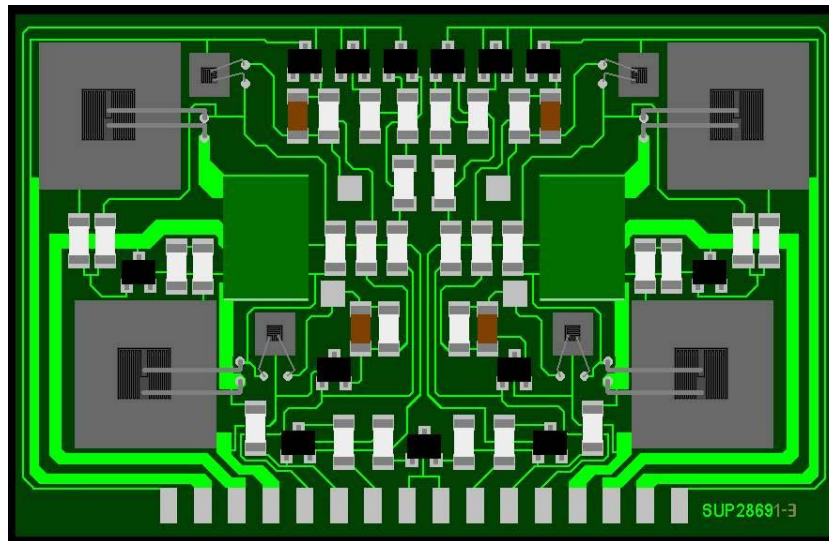


## SVI2004A



1

Internal layout of SVI2004A

16

### Pinouts for SVI2003 SVI2003A SVI2004A SVI2004C

Pin #	Pin Function
1	Ch 1 +Sine IN (audio signal +1.8v)
2	Ch 1 +V (+50V/8 ohm +43V/4 ohm)
3	Ch 1 Output (to spkr)
4	Ch 1 -V (-50V/8 ohm -43V/4 ohm)
5	Ch 1 -Sine IN (audio signal -1.8v)
6	Ch 1 REF (connect to pin 3 via 560 ohm Resistor)
7	Ch 1 Level Shift (overload det signal normal -30V)
8	Ch 1 GND
9	Ch 2 GND
10	Ch 2 Level Shift (overload det signal normal -30V)
11	Ch 2 Ref (connect to pin 14 via 560 ohm Resistor)
12	Ch 2 -Sine IN (audio signal -1.8v)
13	Ch 2 -V (-50V/8 ohm -43V/4 ohm)
14	Ch 2 Output (to spkr)
15	Ch 2 +V (+50V/8 ohm +43V/4 ohm)
16	Ch 2 +Sine IN (audio signal +1.8v)

Note: STK 2028 2038 2048 & 2058 (all except mkII types of the listed) are pin compatible as far as amplifier pins go, in the case of using STK series ICs DO NOT connect pins 6, 7, 10 & 11 (protection/Level Shift pins) leave disconnected and all is well - I have adapted these ICs before - Baily