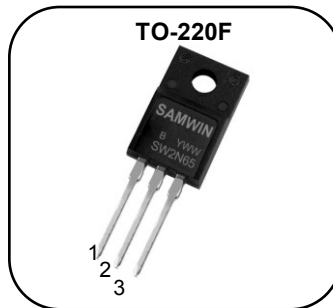


N-channel MOSFET

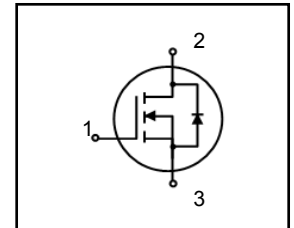
Features

- High ruggedness
- $R_{DS(ON)}$ (Max 5.6 Ω)@ $V_{GS}=10V$
- Gate Charge (Typical 7.7nC)
- Improved dv/dt Capability
- 100% Avalanche Tested



1. Gate 2. Drain 3. Source

BV_{DSS} : 650V
 I_D : 2.0A
 $R_{DS(ON)}$: 5.6ohm



General Description

This power MOSFET is produced with advanced VDMOS technology of SAMWIN. This technology enable power MOSFET to have better characteristics, such as fast switching time, low on resistance, low gate charge and especially excellent avalanche characteristics. This power MOSFET is usually used at high efficient DC to DC converter block and SMPS. It's typical application is TV and monitor.

Order Codes

Item	Sales Type	Marking	Package	Packaging
1	SW F 2N65B	SW2N65	TO-220F	TUBE

Absolute maximum ratings

Symbol	Parameter	Value	Unit
V_{DSS}	Drain to Source Voltage	650	V
I_D	Continuous Drain Current (@ $T_C=25^\circ C$)	2.0*	A
	Continuous Drain Current (@ $T_C=100^\circ C$)	1.0*	A
I_{DM}	Drain current pulsed (note 1)	8.4	A
V_{GS}	Gate to Source Voltage	± 30	V
E_{AS}	Single pulsed Avalanche Energy (note 2)	145	mJ
E_{AR}	Repetitive Avalanche Energy (note 1)	20	mJ
dv/dt	Peak diode Recovery dv/dt (note 3)	4.5	V/ns
P_D	Total power dissipation (@ $T_C=25^\circ C$)	16.7	W
	Derating Factor above 25°C	0.13	W/°C
T_{STG}, T_J	Operating Junction Temperature & Storage Temperature	-55 ~ + 150	°C
T_L	Maximum Lead Temperature for soldering purpose, 1/8 from Case for 5 seconds.	300	°C

*. Drain current is limited by junction temperature.

Thermal characteristics

Symbol	Parameter	Value	Unit
R_{thjc}	Thermal resistance, Junction to case	7.4	°C/W
R_{thcs}	Thermal resistance, Case to Sink	-	°C/W
R_{thja}	Thermal resistance, Junction to ambient	50	°C/W

Electrical characteristic ($T_C = 25^\circ\text{C}$ unless otherwise specified)

Symbol	Parameter	Test conditions	Min.	Typ.	Max.	Unit
Off characteristics						
BV_{DSS}	Drain to source breakdown voltage	$V_{GS}=0V, I_D=250\mu A$	650	-	-	V
$\Delta BV_{DSS} / \Delta T_J$	Breakdown voltage temperature coefficient	$I_D=250\mu A$, referenced to 25°C	-	0.81	-	V/ $^\circ\text{C}$
I_{DSS}	Drain to source leakage current	$V_{DS}=650V, V_{GS}=0V$	-	-	1	μA
		$V_{DS}=520V, T_C=125^\circ\text{C}$	-	-	10	μA
I_{GSS}	Gate to source leakage current, forward	$V_{GS}=30V, V_{DS}=0V$	-	-	100	nA
	Gate to source leakage current, reverse	$V_{GS}=-30V, V_{DS}=0V$	-	-	-100	nA
On characteristics						
$V_{GS(TH)}$	Gate threshold voltage	$V_{DS}=V_{GS}, I_D=250\mu A$	2.0	-	4.0	V
$R_{DS(ON)}$	Drain to source on state resistance	$V_{GS}=10V, I_D = 1A$		4.5	5.6	Ω
G_{fs}	Forward Transconductance	$V_{DS} = 40 V, I_D = 1 A$	1			S
Dynamic characteristics						
C_{iss}	Input capacitance	$V_{GS}=0V, V_{DS}=25V, f=1\text{MHz}$	-		260	pF
C_{oss}	Output capacitance		-		40	
C_{rss}	Reverse transfer capacitance		-		12	
$t_{d(on)}$	Turn on delay time	$V_{DS}=325V, I_D=2.0A, R_G=25\Omega$ (note 4,5)	-	9	35	ns
t_r	Rising time		-	23	40	
$t_{d(off)}$	Turn off delay time		-	12	50	
t_f	Fall time		-	22	50	
Q_g	Total gate charge	$V_{DS}=520V, V_{GS}=10V, I_D=2.0A$ (note 4,5)	-	7.7	16	nC
Q_{gs}	Gate-source charge		-	2.1	-	
Q_{gd}	Gate-drain charge		-	4.6	-	

Source to drain diode ratings characteristics

Symbol	Parameter	Test conditions	Min.	Typ.	Max.	Unit
I_S	Continuous source current	Integral reverse p-n Junction diode in the MOSFET	-	-	2.0	A
I_{SM}	Pulsed source current		-	-	8.4	A
V_{SD}	Diode forward voltage drop.	$I_S=2.0A, V_{GS}=0V$	-	-	1.5	V
T_{rr}	Reverse recovery time	$I_S=2.0A, V_{GS}=0V,$	-	351	-	ns
Q_{rr}	Reverse recovery Charge	$di_F/dt=100A/\mu s$	-	1.5	-	μC

※. Notes

1. Repetitive rating : pulse width limited by junction temperature.
2. $L = 72.5\text{mH}, I_{AS} = 2A, V_{DD} = 50V, R_G=25\Omega$, Starting $T_J = 25^\circ\text{C}$
3. $I_{SD} \leq 2A, di/dt = 100A/\mu s, V_{DD} \leq BV_{DSS}$, Starting $T_J = 25^\circ\text{C}$
4. Pulse Test : Pulse Width $\leq 300\mu s$, duty cycle $\leq 2\%$
5. Essentially independent of operating temperature.

Fig. 1. On-state characteristics

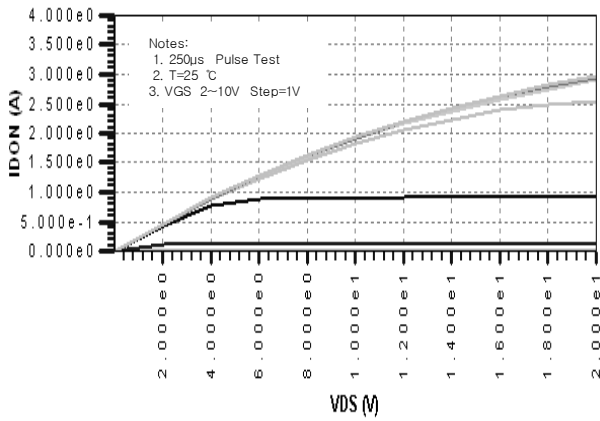


Fig. 2. On-resistance variation vs. drain current and gate voltage

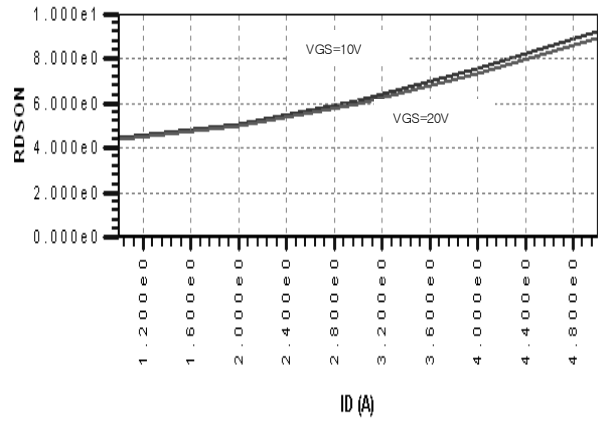


Fig. 3. Gate charge characteristics

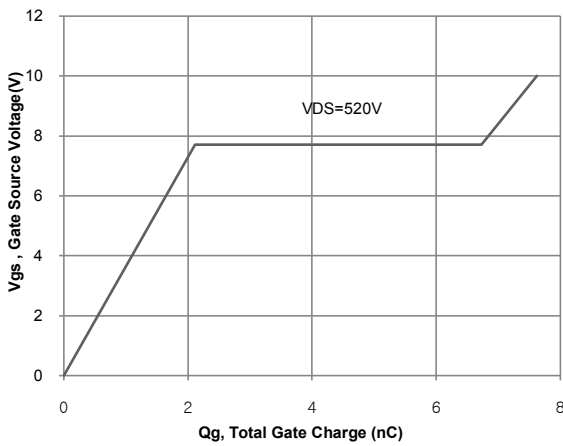


Fig. 4. On state current vs. diode forward voltage

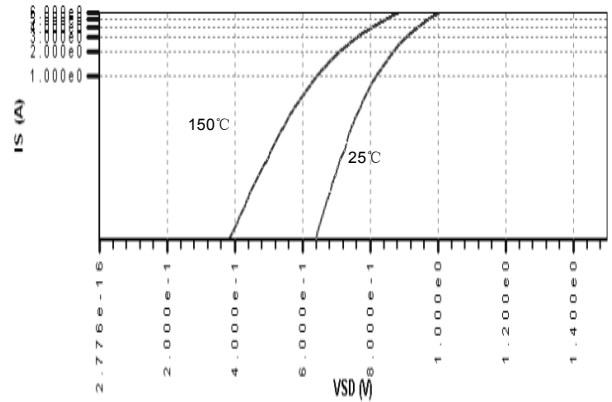


Fig 5. Breakdown Voltage Variation vs. Junction Temperature

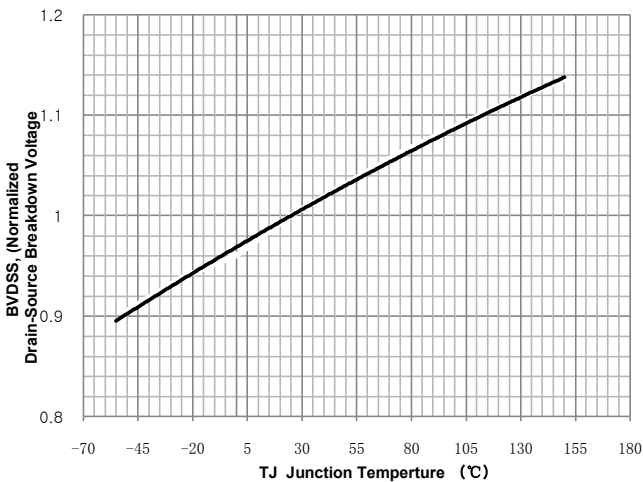


Fig. 6. On resistance variation vs. junction temperature

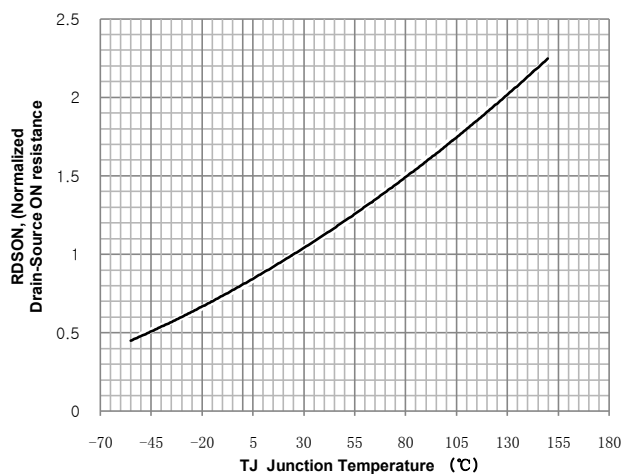


Fig. 7. Maximum safe operating area (TO-220F)

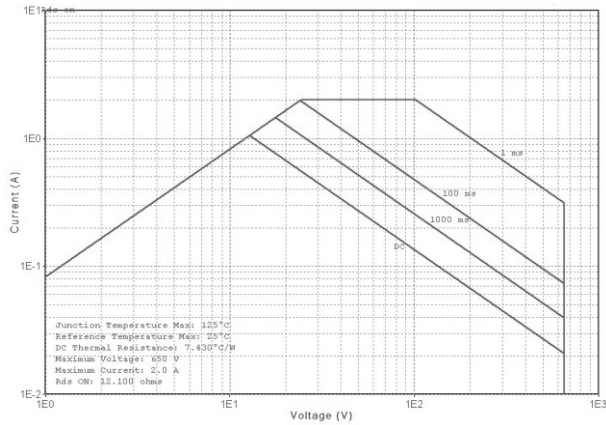


Fig. 8. Transient thermal response curve

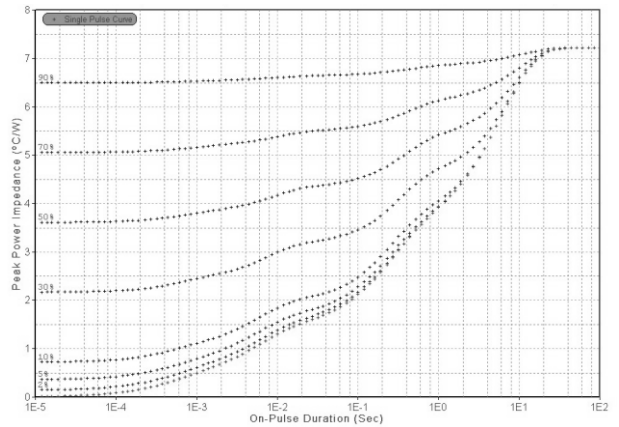


Fig. 9. Gate charge test circuit & waveform

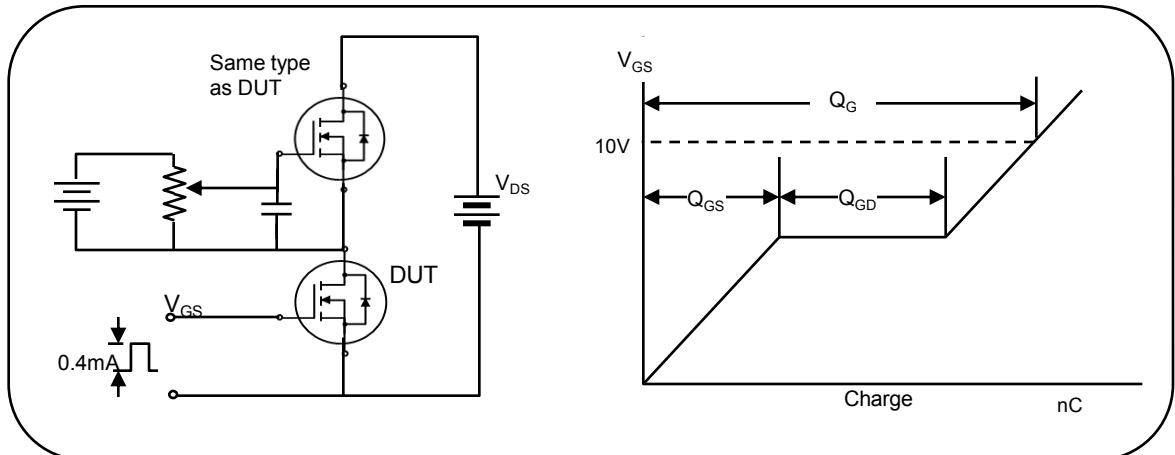


Fig. 10. Switching time test circuit & waveform

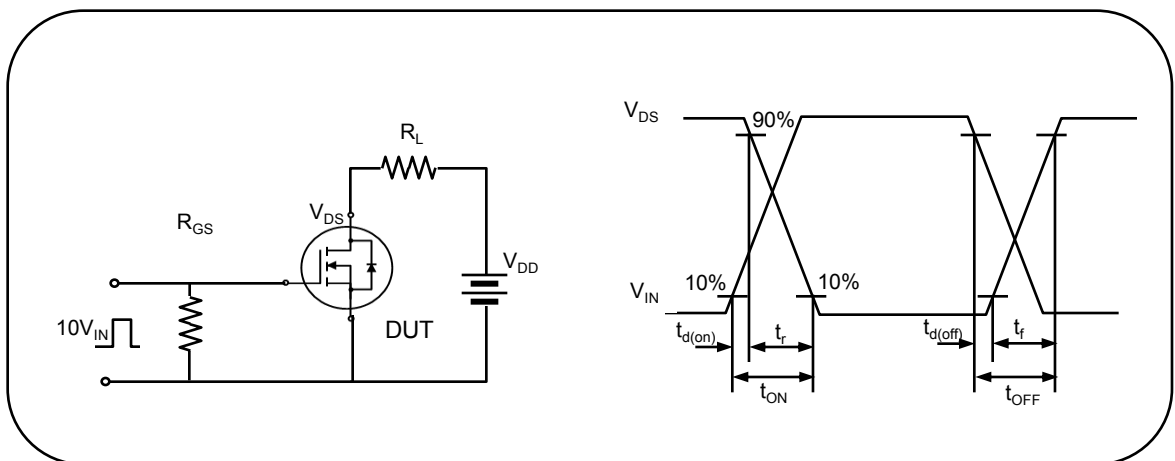


Fig. 12. Peak diode recovery dv/dt test circuit & waveform

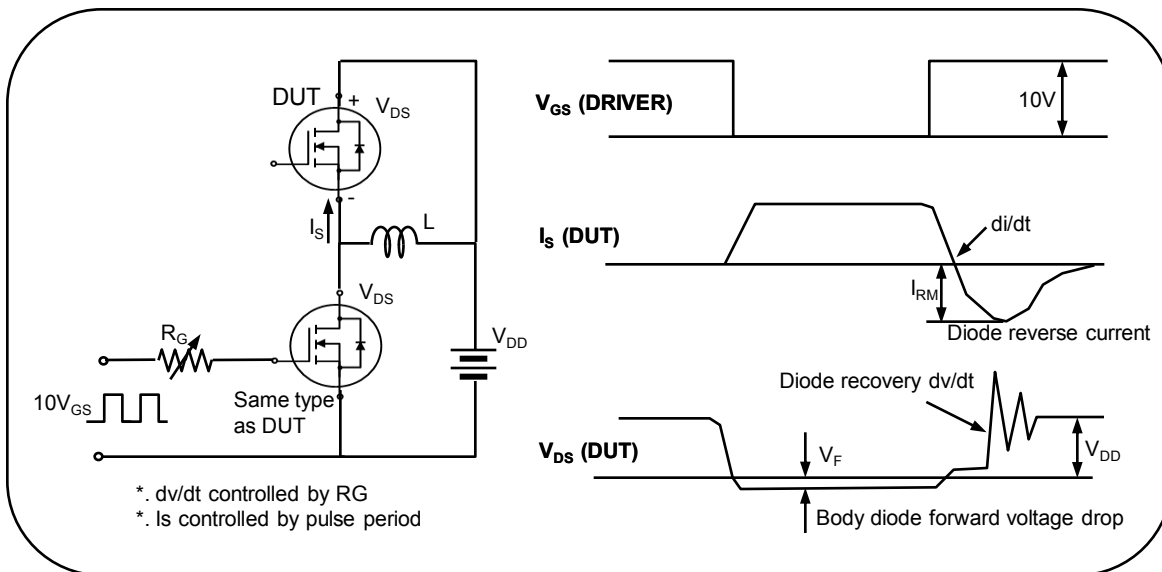


Fig. 12. Peak diode recovery dv/dt test circuit & waveform

