
PD Solution for Fast Charge Application

1. General Description

The SWSW3522 is a highly integrated power management IC for fast charge application. It integrates 3.5A synchronous buck, PPS/PD/QC/AFC/FCP/SFCP fast charge protocol, CC/CV mode. With simple external components, The SW3522 provides a turn-key high efficiency solution for fast charge application.

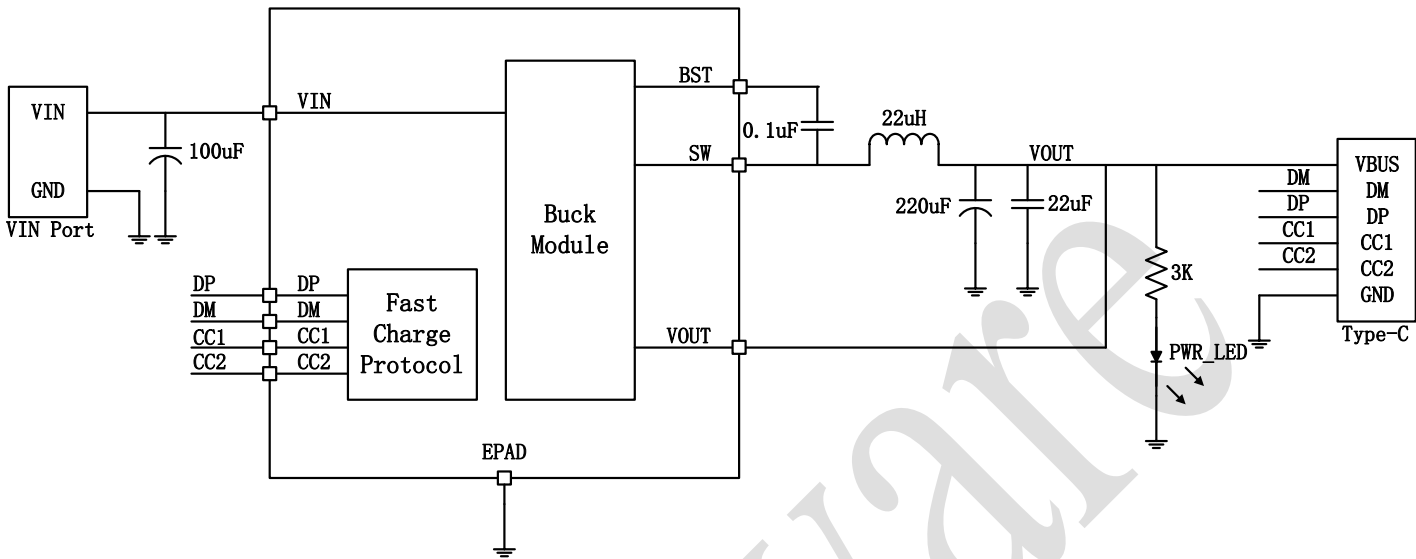
2. Applications

- Car Charger
- Adapter

3. Features

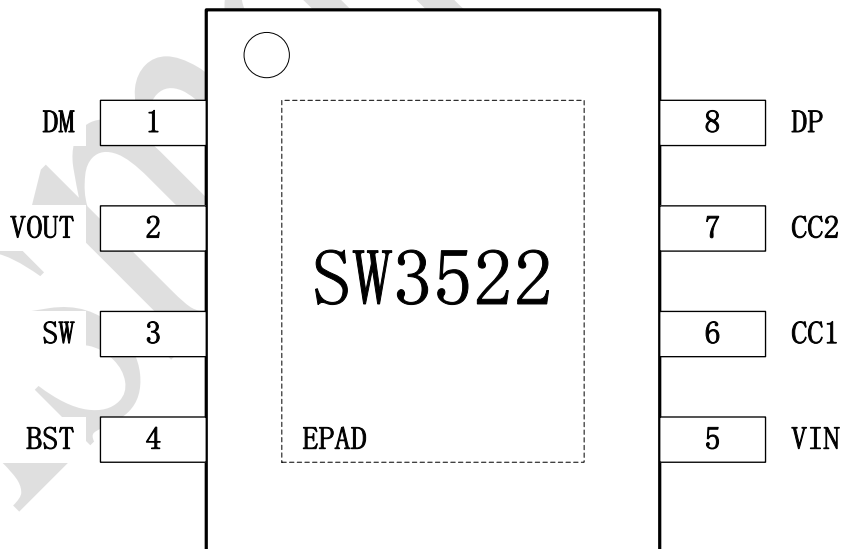
- **Synchronous Buck**
 - Current up to 3.5A
 - Input Voltage 6~35V
 - Support CC/CV Mode
 - Support Wire Drop Compensation
- **Output Fast Charge Protocol**
 - Support PPS/PD3.0/PD2.0
 - Support QC4+/QC4/QC3.0/QC2.0
 - Support AFC
 - Support FCP
 - Support SFCP
- **Type-C Interface**
 - Support USB Type-C Specification
 - Support DFP Role
- **BC1.2 Module**
 - Support BC1.2 DCP
 - Support Apple & Samsung Device
- **Protection**
 - Softstart
 - Input Over Voltage Protection
 - Input Under Voltage Protection
 - Output Over Current Protection
 - Output Short Protection
 - Over Temperature Protection
- **ESOP8 Package**

4. Functional Block Diagram



5. Pin Configuration and Function

5.1. Pin Configuration



5.2. Pin Descriptions

Pin	Name	Function Description
1	DM	Type-C port DM pin.

2	VOUT	Output voltage sense pin.
3	SW	Switching node.
4	BST	Bootstrap pin for high side NMOS.
5	VIN	Input power.
6	CC1	Type-C configure channel CC1.
7	CC2	Type-C configure channel CC2.
8	DP	Type-C port DP pin.
	EPAD	Exposed pad.

6. Absolute Maximum Ratings

Parameters	Symbol	MIN	MAX	UNIT
Input Voltage	VIN	-0.3	35	V
Output Voltage	VOUT	-0.3	22	V
SW Voltage	SW	-0.3	35	V
BST Voltage	BST-SW	-0.3	6	V
CC1/CC2/DP/DM Voltage	CC1/CC2/DP/DM	-0.3	25	V
Junction Temperature		-40	+150	°C
Storage Temperature Range		-60	+150	°C
ESD (HBM)		-4	+4	KV

【Notice】 Stresses beyond those listed under absolute maximum ratings may cause permanent damage to the device. These are stress ratings only, and functional operation of the device at these or any other conditions beyond those indicated under recommended operating conditions is not implied. Exposure to absolute-maximum-rated conditions for extended periods may affect device reliability.

7. Recommended Operating Conditions

Parameters	Symbol	MIN	Typical	MAX	UNIT
Input Voltage	VIN	5		32	V

8. Electrical Characteristics

(VIN = 12V, TA = 25°C, unless otherwise specified.)

Parameters	Symbol	Test Conditions	MIN	TYP	MAX	UNIT
Power Supply						
VIN Input Voltage	VIN		5		32	V

VIN Input UVLO Threshold	V _{IN_UVLO}	VIN Voltage Falling	5.2	5.3	5.4	V
VIN Input UVLO Hysteresis	V _{IN_UVLO_HYS}	VIN Voltage Rising	0.4	0.6	0.8	V
VIN Input OVP Threshold	V _{IN_OVP}	VIN Voltage Rising	29.6	30.8	32	V
VIN Input OVP Hysteresis	V _{IN_OVP_HYS}	VIN Voltage Falling	0.4	0.8	1.2	V
Quiescent Current	I _Q	V _{IN} =12V, I _{OUT} =0mA		2	4	mA
Synchronous Buck						
Switching Frequency	F _{CHG}		110	125	140	KHz
Output Voltage	V _{OUT}	V _{OUT} =5V	5.0	5.1	5.2	V
		V _{OUT} =9V	8.9	9.1	9.3	V
		V _{OUT} =12V	11.9	12.1	12.3	V
		V _{OUT} =15V	14.8	15.1	15.4	V
		V _{OUT} =20V	19.8	20.1	20.4	V
CC Current Limited	I _{CC}	V _{OUT} =5V	3.0	3.4	3.8	A
		V _{OUT} =9V	3.0	3.4	3.8	A
		V _{OUT} =12V	2.5	2.8	3.2	A
		V _{OUT} =15V	2.0	2.4	2.8	A
		V _{OUT} =20V	1.5	1.8	2.2	A
Wire Drop Compensation	V _{OUT_WDC}			200	mV	
High Side NMOS	R _{DSON_H}		30	32	35	mΩ
Low Side NMOS	R _{DSON_L}		20	22	25	mΩ
Type-C						
CC Current Source	I _{CC_SOURCE}	Power Level=3.0A	310	330	350	uA
BC1.2						
DP/DM Voltage	DP	Apple 2.4A Mode	2.55	2.7	2.85	V
	DM	Apple 2.4A Mode	2.55	2.7	2.85	V
Thermal Shutdown						
Thermal Shutdown Threshold	T _{SHDT}	Temperature Rising	135	150	165	°C
Thermal Shutdown Hysteresis	T _{SHDT_HYS}	Temperature Falling	35	50	65	°C

9. Functional Description

9.1. Synchronous Buck

The SW3522 integrates a high efficiency synchronous buck with inner NMOS and output current up to 3.5A and efficiency up to 94%(VIN=12V, VOUT=5V, IOU=3A).

The synchronous buck works in PSM/PWM mode with switching frequency of 125KHz. It works in PSM mode when in light load and in PWM mode in heavy load to make a better efficiency. It will automatically change in these two modes base on output current.

The synchronous buck supports CC/CV mode. When output current is lower than CC limited current, output voltage will keep constant. When output current reaches CC limited current, output voltage will drop to keep output current constant.

The synchronous buck supports wire drop compensation. Output voltage will linear increase according to output current and the maximum increased voltage is limited to 200mV.

The synchronous buck integrates input over voltage, input under voltage, output over current and short protection.

9.2. Type C Interface

The SW3522 integrates Type-C logic controller and supports DFP/SOURCE role. When UFP is attached, Type-C port will automatically turn on to supply device. When UFP is detached, Type-C port will automatically turn off.

When SINK is attached and Type-C port turns on , the SW3522 will broadcast power level of 3A.

9.3. PD Fast Charge

The SW3522 integrates PPS/PD3.0/PD2.0 fast charge protocol. PPS supports 3.3~11V@3A, 3.3~16V@2A output voltage. PD3.0/PD2.0 supports 5V@3A, 9V@3A, 12V@2.5A, 15V@2A, 20V@1.5A.

9.4. QC Fast Charge

The SW3522 integrates QC4+/QC4/QC3.0/QC2.0 fast charge protocol. It supports Class A/Class B, while QC2.0 supporting 5V/9V/12V/20V output voltage and QC3.0 supporting 3.6V~20V output voltage, 200mV/Step.

QC2.0/QC3.0 will output voltage base on DP/DM voltage:

Device		SW3522	
DP	DM	VOUT	Note
3.3V	3.3V	20V	
0.6V	0.6V	12V	
3.3V	0.6V	9V	
0.6V	3.3V	continuous mode	0.2V/Step
0.6V	GND	5V	

9.5. AFC Fast Charge

The SW3522 integrates AFC fast charge protocol, and supports 5V/9V/12V output voltage.

9.6. FCP Fast Charge

The SW3522 integrates FCP fast charge protocol, and supports 5V/9V/12V output voltage.

9.7. SFCP Fast Charge

The SW3522 integrates SFCP fast charge protocol, and supports 5V/9V/12V output voltage.

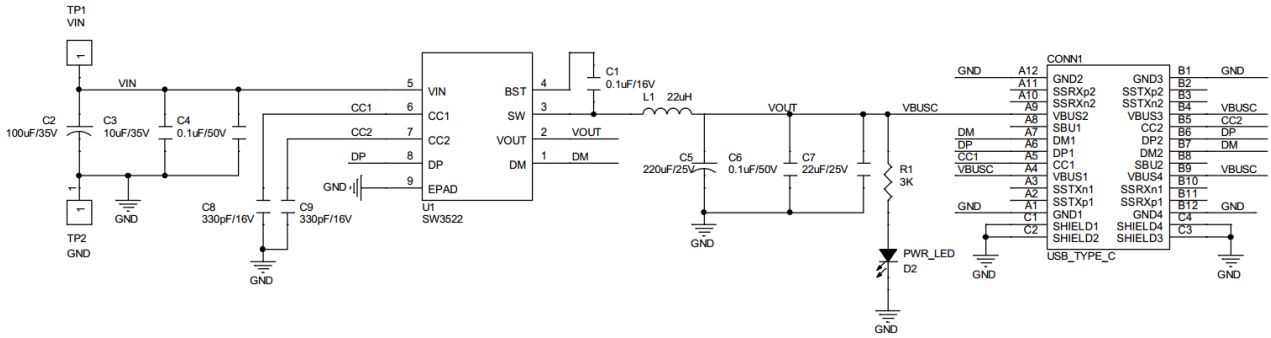
9.8. BC1.2 Module

The SW3522 integrates BC1.2 controller, and automatically detects apple and samsung devices:

Apple 2.4A mode: DP=2.7V, DM=2.7V;

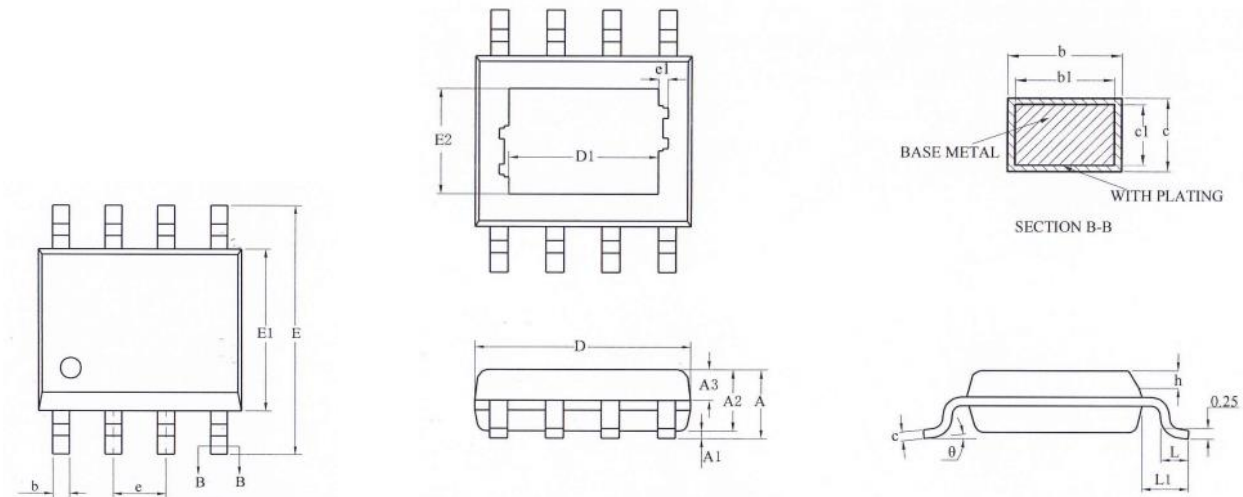
Samsung 2A mode: DP=1.2V, DM=1.2V;

10. Typical Application Circuits



11. Mechanical and Packaging

11.1. Package Summary



11.2. Package Outline and Dimensions

Symbol	Dimension in Millimeters		
	MIN	NOM	MAX
A	-	-	1.65
A1	0.05	-	0.15
A2	1.30	1.40	1.50
A3	0.60	0.65	0.70
b	0.39	-	0.47
b1	0.38	0.41	0.44
c	0.20	-	0.24
c1	0.19	0.20	0.21
D	4.80	4.90	5.00
D1	3.10REF		
E	5.80	6.00	6.20
E1	3.80	3.90	4.00
E2	2.21REF		
e	1.27BSC		
e1	0.10REF		
h	0.25	-	0.50
L	0.50	0.60	0.80
L1	1.05REF		
θ	0	-	8°

12. Revision History

- V1.0 Initial version.
- V1.1 Add drain-source on resistance of power MOS.
- V1.2 Modify company logo.
- V1.3 Update document template.

ismartware

Disclaimer

Zhuhai iSmartWare Technology Co., Ltd. (hereinafter referred to as "iSmartWare") may modify or update the products, services and this document provided at any time without prior notice. Customers should obtain the latest relevant information before placing an order and confirm that such information is complete and up-to-date.

The information contained in this document is for your convenience only, and iSmartWare makes no representations or warranties, express or implied, written or oral, statutory or otherwise, for such information, including but not limited to the purpose, characteristics, conditions of use, merchantability of the product. etc. iSmartWare does not assume any responsibility for this information and the consequences caused by the unreasonable use of this information.

iSmartWare assumes no obligation for application assistance or customer product design. Customers are solely responsible for their products and applications using iSmartWare. Customers should provide sufficient design and operation security verification, and guarantee that when integrating iSmartWare products into any application, they will not infringe third-party intellectual property rights, and iSmartWare will not be responsible for any infringements.

When resale of iSmartWare products, if there are differences or false components compared with the product parameters and their statements, all express or implied authorizations of iSmartWare related products will be automatically lost, and this is unfair and fraudulent. For business behavior, iSmartWare reserves the right to protect its rights in all legal ways. iSmartWare assumes no responsibility or liability for any such misrepresentation.

This document is only allowed to be reproduced without any tampering with the content and with relevant authorizations, conditions, restrictions and statements, otherwise iSmartWare has the right to pursue its legal responsibility. iSmartWare assumes no responsibility or liability for such tampered documents. Reproduction of information involving third parties is subject to additional restrictions.