

General Description

The SY21142 high-efficiency asynchronous Buck converter can deliver 2A output current over a wide input voltage range from 4.5V to 60V. The SY21142 employs a constant off-time and peak current mode control strategy to achieve fast transient responses. It integrates a main switch with low $R_{DS(ON)}$ to minimize conduction loss.

The adjustable switching frequency permits low output voltage ripple and reduces external inductor and capacitor sizes. The SY21142 also provides cycle-by-cycle peak current limiting, over temperature protection, and output short circuit protection.

The SY21142 is available in a compact SO8E package.

Features

- Low $R_{DS(ON)}$ for Internal N-channel Power FET: 175m Ω
- 4.5V to 60V Input Voltage Range
- Up to 2A Output Current
- Adjustable Switching Frequency Range: 100kHz to 1MHz
- Constant Off-Time and Peak Current Mode Control
- Internal Soft-Start Limits Inrush Current
- $\pm 1\%$ 0.8V Reference
- EN ON/OFF Control with Accurate Threshold
- Hiccup Mode Output Short Circuit Protection
- Cycle-by-Cycle Peak Current Limit
- Over Temperature Protection
- RoHS-Compliant and Halogen-Free
- Compact SO8E Package

Applications

- Non-Isolated Telecommunication Buck Regulator
- Secondary High-Voltage Post Regulator
- Automotive Systems
- Electric Bicycle

Typical Application

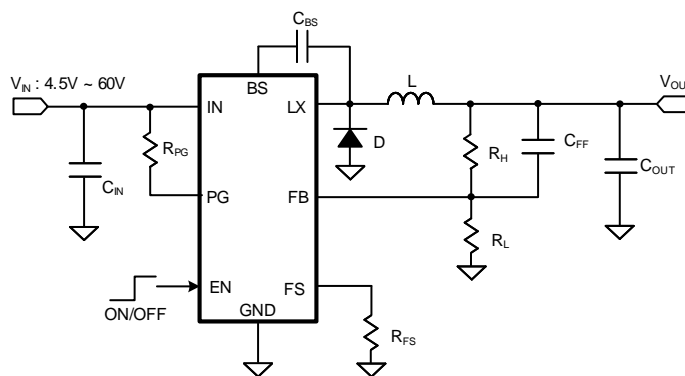


Figure 1. Schematic Diagram

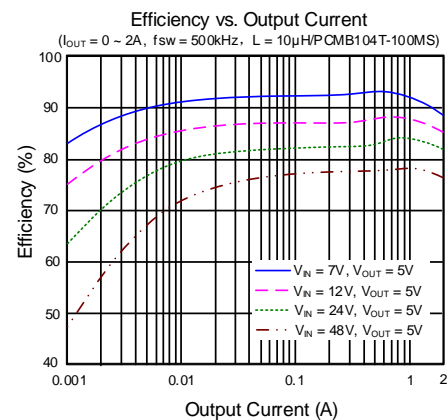


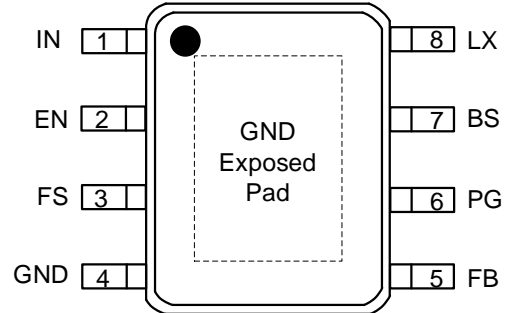
Figure 2. Efficiency vs. Output Current

Ordering Information

Ordering Part Number	Package Type	Top Mark
SY21142FCC	SO8E RoHS-Compliant, Halogen-Free	CALxyz

x = year code, y = week code, z = lot number code

Pinout (top view)



Pin Description

Pin Number	Pin Name	Pin Description
1	IN	Input pin. Decouple this pin to the GND pin with at least a 2.2μF ceramic capacitor.
2	EN	Enable control. Pull this pin lower than EN falling threshold to disable the device, pull this pin higher than EN rising threshold to enable the device. Do not leave this pin floating.
3	FS	Frequency programming pin. Connect a resistor to ground to program a switching frequency between 100kHz to 1MHz: $f_{sw}(kHz) = 10^5 / R_{FS}(k\Omega)$
4	GND	Ground pin.
5	FB	Output feedback pin. Connect this pin to the center point of the output resistor-divider (as shown in Figure 1) to program the output voltage: $V_{OUT} = 0.8 \times (1 + \frac{R_H}{R_L})$
6	PG	Power good indicator. Open drain output when the output voltage is within 90% to 120% of the regulated value.
7	BS	Bootstrap pin. Supply for the power FET gate driver. Connect a 0.1μF ceramic capacitor between the BS pin and the LX pin.
8	LX	Inductor pin. Connect this pin to the switching node of the inductor.
EP	Exposed Pad	Exposed pad must be connected to the GND pin. Connect to system ground plane on application board for optimal thermal performance.

Block Diagram

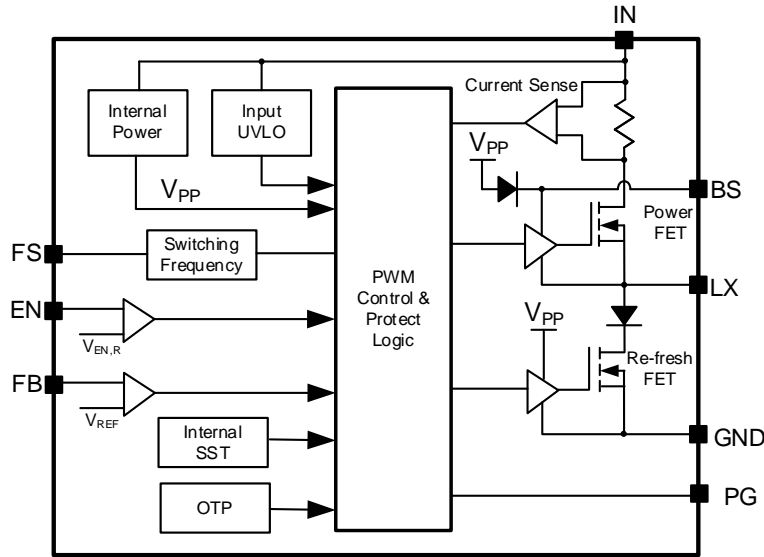


Figure 3. Block Diagram

Absolute Maximum Ratings

Parameter (Note 1)	Min	Max	Unit
IN	-0.3	66	V
BS-LX	-0.3	6	
EN, FS, FB, PG	-0.3	IN + 0.3	
LX	-1	IN + 0.3	
Dynamic LX voltage in 10 ns Duration	GND - 5	IN + 3	
Junction Temperature, Operating	-40	150	°C
Lead Temperature (Soldering, 10s)		260	°C
Storage Temperature	-65	150	

Thermal Information

Parameter (Note 2)	Typ	Unit
θ_{JA} Junction-to-Ambient Thermal Resistance	38	°C/W
θ_{JC} Junction-to-Case Thermal Resistance	3	
P_D Power Dissipation $T_A = 25^\circ\text{C}$	3.3	W

Recommended Operating Conditions

Parameter (Note 3)	Min	Max	Unit
IN	4.5	60	V
BS-LX		3.3	
Output Current		2	A
Junction Temperature	-40	125	°C
Ambient Temperature	-40	85	°C

Electrical Characteristics

($V_{IN} = 24V$, $V_{OUT} = 5V$, $L = 10\mu H$, $C_{OUT} = 22\mu F$, $T_A = 25^\circ C$, $I_{OUT} = 1A$ unless otherwise specified)

Parameter	Symbol	Test Conditions	Min	Typ	Max	Unit	
Input	Voltage Range	V_{IN}	4.5		60	V	
	UVLO Rising Threshold	$V_{IN,UVLO}$	3.9	4.2	4.5	V	
	UVLO Hysteresis	V_{HYS}		0.3		V	
	Quiescent Current	I_Q	$V_{FB} = 105\% \times V_{REF}$		100	130	μA
	Shutdown Current	I_{SHDN}	$V_{EN} = 0V$		6	16	μA
Output	Reference Voltage	V_{REF}	792	800	808	mV	
	FB Input Current	I_{FB}	$V_{FB} = 3.3V$	-50		50	nA
	Soft-Start Time	t_{SS}		2		ms	
	UVP Threshold	V_{UVP}		45	50	55	$\%V_{REF}$
	UVP Delay	$t_{UVP,DLY}$			10		μs
	UVP Hiccup On-Time	$t_{HICCUP,ON}$			2		ms
	UVP Hiccup Off-Time	$t_{HICCUP,OFF}$			16		ms
MOSFET	Power FET $R_{DS(ON)}$	$R_{DS(ON)}$			175	m Ω	
	Power FET Current Limit Threshold	I_{LMT}	2.8	3.5	4.2	A	
Enable (EN)	Rising Threshold	$V_{EN,R}$	1	1.1	1.2	V	
	Falling Threshold	$V_{EN,F}$	0.8	0.9	1	V	
COT	Switching Frequency Program Range	$f_{SW,RNG}$	$R_{FS} = 100kHz \sim 1MHz$	100		1000	kHz
	Switching Frequency Setting Accuracy	f_{SW}	$R_{FS} = 200k\Omega$	400	500	600	kHz
	Minimum On-Time	$t_{ON,MIN}$			130		ns
	Minimum Off-Time	$t_{OFF,MIN}$			200		ns
Power Good	Rising Threshold	$V_{PG,R}$	V_{FB} rising, PG from low to high		92		$\%V_{REF}$
			V_{FB} falling, PG from low to high		115		$\%V_{REF}$
	Falling Threshold	$V_{PG,F}$	V_{FB} falling, PG from high to low		90		$\%V_{REF}$
			V_{FB} rising, PG from high to low		120		$\%V_{REF}$
	Delay Time	$t_{PG,R}$	Low to high		200		μs
		$t_{PG,F}$	High to low		20		μs
Low Voltage	$V_{PG,LOW}$	$I_{PG} = 2mA$			0.3	V	
Leakage Current	$I_{PG,LKG}$				1	μA	
OTP	Temperature	T_{OTP}	(Note 4)	150			$^\circ C$
	Temperature Hysteresis	T_{HYS}	(Note 4)	15			$^\circ C$

Note 1: Stresses beyond “Absolute Maximum Ratings” may cause permanent damage to the device. These are for stress ratings. Functional operation of the device at these or any other conditions beyond those indicated in the operational sections of the specifications is not implied. Exposure to absolute maximum rating conditions may affect device reliability.

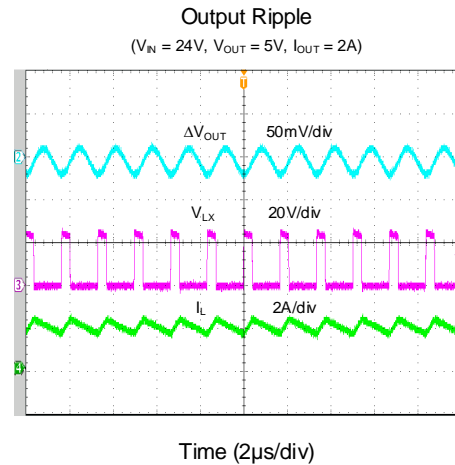
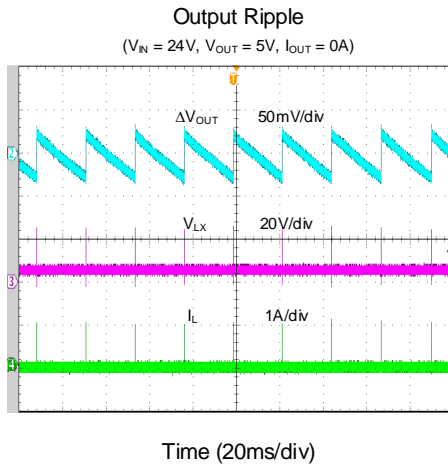
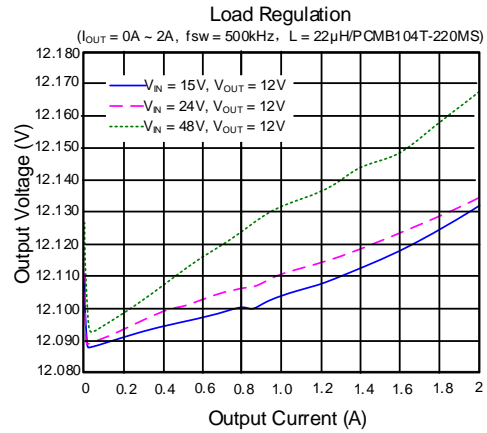
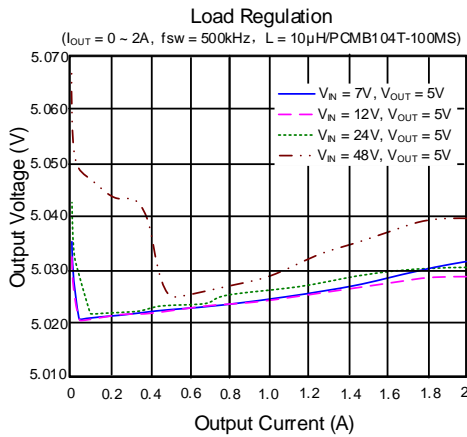
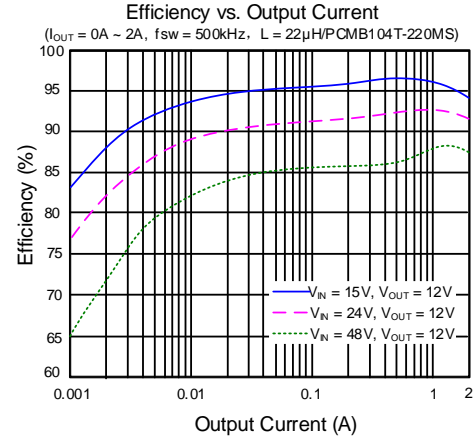
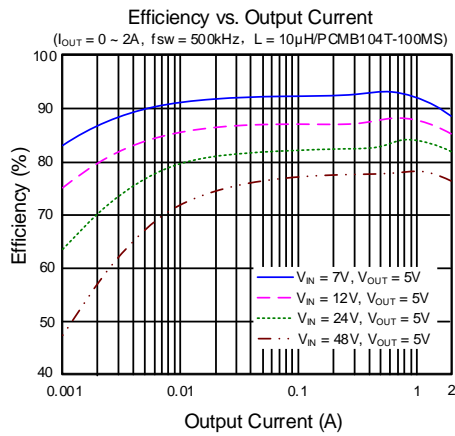
Note 2: θ_{JA} is measured in the natural convection at $T_A = 25^\circ C$ on a high effective thermal conductivity four-layer test board per JESD51-7. Pin 2 of SO8E packages is the case position for θ_{JC} measurement.

Note 3: The device is not guaranteed to function outside its operating conditions.

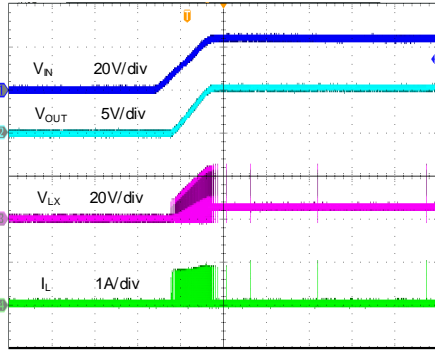
Note 4: Guaranteed by design.

Typical Performance Characteristics

($V_{IN} = 24V$, $V_{OUT} = 5V$, $L = 10\mu H$, $C_{OUT} = 22\mu F$, $T_A = 25^\circ C$, $I_{OUT} = 2A$, $f_{sw} = 500kHz$ unless otherwise specified)

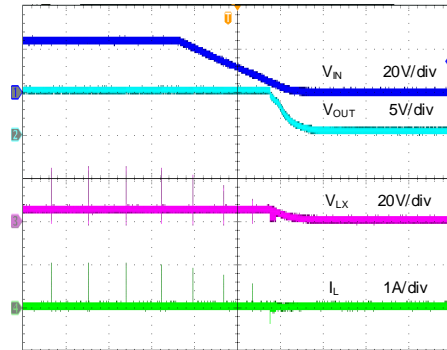


Startup from V_{IN}
($V_{IN} = 24V$, $V_{OUT} = 5V$, $I_{OUT} = 0A$)



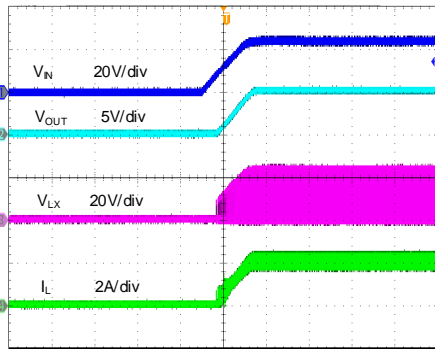
Time (2ms/div)

Shutdown from V_{IN}
($V_{IN} = 24V$, $V_{OUT} = 5V$, $I_{OUT} = 0A$)



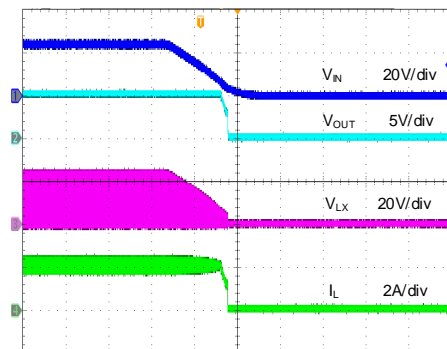
Time (20ms/div)

Startup from V_{IN}
($V_{IN} = 24V$, $V_{OUT} = 5V$, $I_{OUT} = 2A$)



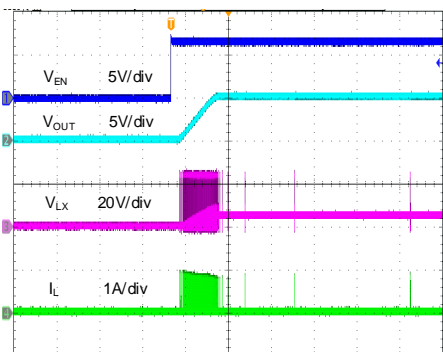
Time (2ms/div)

Shutdown from V_{IN}
($V_{IN} = 24V$, $V_{OUT} = 5V$, $I_{OUT} = 2A$)



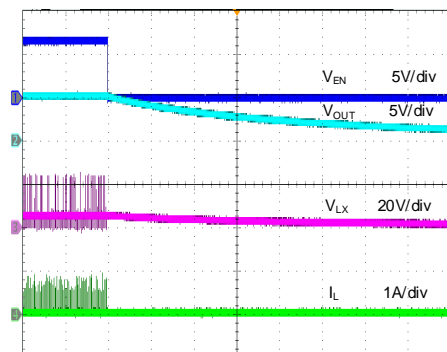
Time (20ms/div)

Startup from Enable
($V_{IN} = 24V$, $V_{OUT} = 5V$, $I_{OUT} = 0A$)



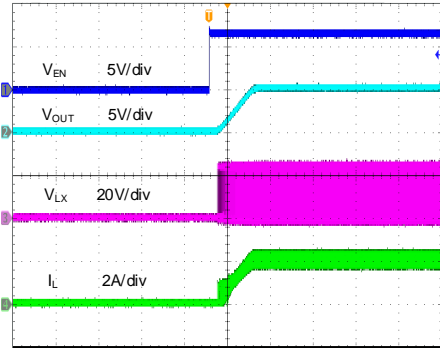
Time (2ms/div)

Shutdown from Enable
($V_{IN} = 24V$, $V_{OUT} = 5V$, $I_{OUT} = 0A$)



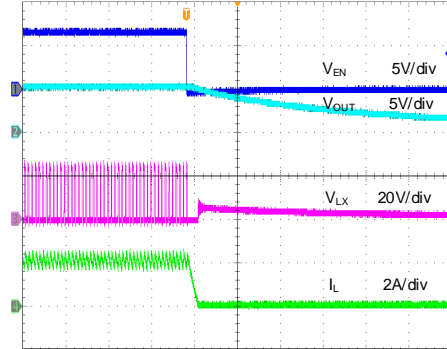
Time (1s/div)

Startup from Enable
 ($V_{IN} = 24V, V_{OUT} = 5V, I_{OUT} = 2A$)



Time (2ms/div)

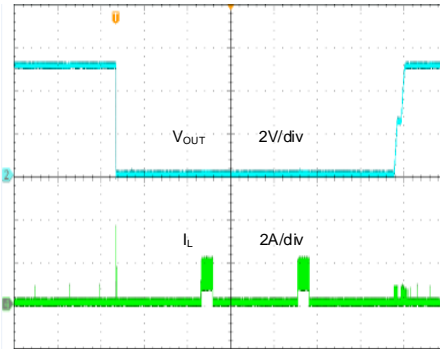
Shutdown from Enable
 ($V_{IN} = 24V, V_{OUT} = 5V, I_{OUT} = 2A$)



Time (20µs/div)

Short Circuit Protection

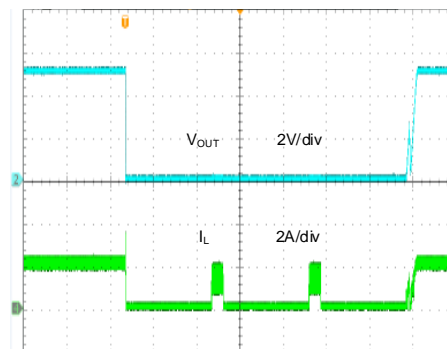
($V_{IN} = 24V, V_{OUT} = 5V, I_{OUT} = 0A \sim \text{short}$)



Time (10ms/div)

Short Circuit Protection

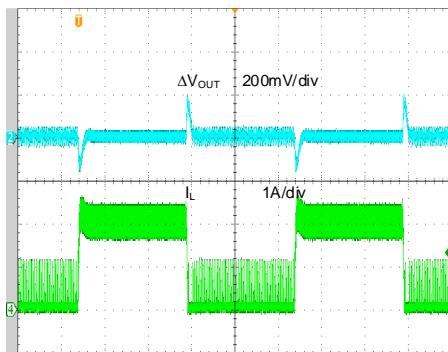
($V_{IN} = 24V, V_{OUT} = 5V, I_{OUT} = 2A \sim \text{short}$)



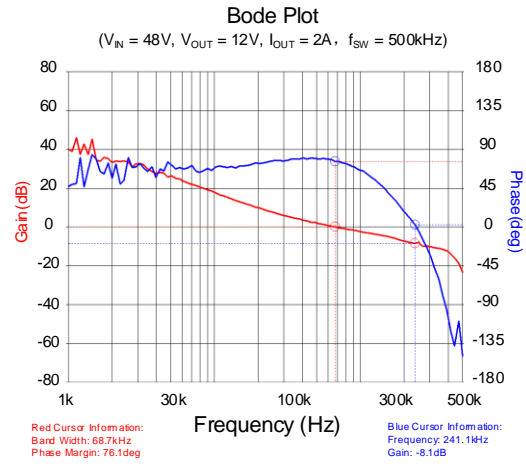
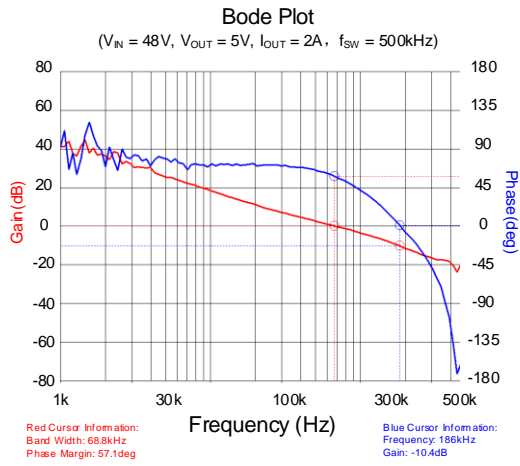
Time (10ms/div)

Load transient

($V_{IN} = 24V, V_{OUT} = 5V, I_{OUT} = 0.2A \sim 2A$)



Time (200µs/div)



Detailed Description

The SY21142 high-efficiency asynchronous Buck converter can deliver 2A output current over a wide input voltage range from 4.5V to 60V. It integrates a power FET with low $R_{DS(ON)}$ to minimize conduction loss.

The adjustable switching frequency permits low output voltage ripple and reduces external inductor and capacitor sizes. The SY21142 also provides cycle-by-cycle current limiting, over temperature protection and output short circuit protection.

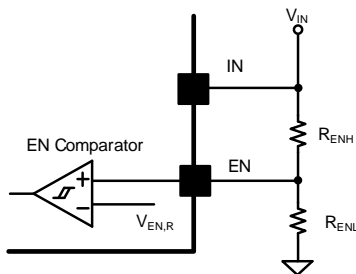
The SY21142 employs a constant off-time and peak-current mode control strategy. When the power FET's current-sense signal reaches internal V_{COMP} , the power FET turns off for a fixed period of time (constant off-time). t_{OFF} is internally calculated according to the input voltage, output voltage, and desired switching frequency (f_{SW}):

$$t_{OFF} = \frac{1 - V_{OUT}/V_{IN}}{f_{SW}}$$

The power FET turns on after a period of t_{OFF} .

Enable and Adjusting Input Undervoltage Lockout

The EN pin provides programmable ON/OFF control by connecting an external resistor-divider, and has an accurate rising and falling threshold. The converter will operate while the EN pin voltage exceeds the rising threshold. If the EN pin voltage is pulled below the falling threshold, the regulator will stop switching and enter shutdown state.



If the input UVLO threshold is low for some high input UVLO threshold requirement applications, use EN to adjust the input UVLO by adopting two external divided resistors.

$$V_{IN,UVLO,ADJ} = \frac{R_{ENL} + R_{ENH}}{R_{ENL}} V_{EN,R}$$

It is not recommended to connect the EN to the IN node directly. A resistor with a value between 1kΩ and 1MΩ is recommended if the EN pin is pulled high to the IN node.

Soft-start

The device has a built-in soft-start to control the rise rate of the output voltage and limit the input current surge during IC startup. The typical soft-start time is 2ms.

Adjustable Switching Frequency

The FS pin is used for setting the switching frequency of the device by connecting a resistor from the FS pin to GND. The switching frequency of the device is adjustable from 100kHz to 1MHz:

$$f_{SW}(kHz) = 10^5 / R_{FS}(k\Omega)$$

The SY21142 linearly folds back the switching frequency when the FB voltage is within 0 ~ 50% of the reference voltage during soft-start and output short circuit event. The minimum switching frequency is clamped to 50kHz.

Power Good Indication

PG is an open-drain output pin. This pin will be pulled to ground if the output voltage is lower than 90% of regulation voltage or higher than 120% of regulation voltage. Otherwise, this pin will go to a high-impedance state.

Fault-Protection Modes

Output Current Limit

With load current increasing, as soon as the power FET current exceeds the peak current-limit threshold, the power FET will turn off. If the load current continues to increase, the output voltage will drop.

Output Under Voltage Protection

With output current increasing, as soon as the power switch current exceeds the peak current limit threshold, the power switch will turn off. If the load current continues to increase, the output voltage will drop. When the output voltage falls below 50% of the regulated level, the output undervoltage protection will be activated and the device will operate in hiccup mode. The hiccup on-time is 2ms, and the hiccup off-time is 16ms. If the hard short condition is removed, the device will return to normal operation.

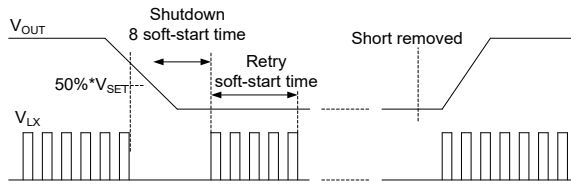


Figure 4. Short Circuit Protection

Overtemperature Protection (OTP)

The device includes overtemperature protection (OTP) circuitry to prevent overheating due to excessive power dissipation. This will shut down the device when the junction temperature exceeds 150°C. Once the junction temperature cools by approximately 15°C, the device will resume normal operation after a complete soft-start cycle. For continuous operation, provide adequate cooling so that the junction temperature does not exceed the OTP threshold.

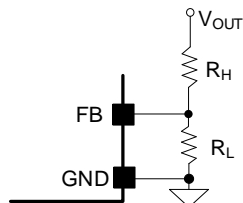
Application Information

The following paragraphs describe the selection process for the feedback resistors (R_H and R_L), input capacitor C_{IN} , output inductor L , output capacitor C_{OUT} , bootstrap capacitor and rectifier diode D .

Feedback Resistor-Divider R_H and R_L

Choose R_H and R_L to program the proper output voltage. Choose large resistance values between 10kΩ and 1MΩ for both R_H and R_L to minimize power consumption under light loads. If V_{OUT} is 5V, a value of 105kΩ is chosen for R_H , then using the following equation, R_L can be calculated as 20kΩ:

$$R_L = \frac{0.8V}{V_{OUT}-0.8V} R_H$$



Input Capacitor C_{IN}

For the best performance, select a typical X5R or better grade ceramic capacitor with a 100V rating and at least 2.2μF capacitance. The capacitor should be placed as close as possible to the device, while also minimizing the loop area formed by C_{IN} and the IN/GND pins.

When selecting an input capacitor, ensure that its voltage rating is at least 20% greater than the maximum voltage of the input supply. X5R or X7R dielectric types are the most often selected due to their small size, low cost, surge current capability, and high RMS current rating over a wide temperature and voltage range.

In situations where the input rail is supplied through long wires, it is recommended to add some bulk capacitance like electrolytic, tantalum or polymer type capacitors to reduce the overshoot and ringing caused by the added parasitic inductance.

Consider the RMS current rating of the input capacitor, paralleling additional capacitors if required to meet the calculated RMS ripple current.

$$I_{CIN_RMS} = I_{OUT} \times \sqrt{D \times (1 - D)}$$

The worst-case condition occurs at $D = 0.5$, then

$$I_{CIN_RMS,MAX} = \frac{I_{OUT}}{2}$$

For simplicity, use an input capacitor with an RMS current rating greater than 50% of the maximum load current.

The input capacitor value determines the input voltage ripple of the converter. If there is a voltage ripple requirement in the system, choose an appropriate input capacitor that meets the specification.

Given the very low ESR and ESL of ceramic capacitors, the input voltage ripple can be estimated using the formula:

$$V_{CIN_RIPPLE,CAP} = \frac{I_{OUT}}{f_{SW} \times C_{IN}} \times D \times (1 - D)$$

The worst-case condition occurs at $D = 0.5$, then

$$V_{CIN_RIPPLE,CAP,MAX} = \frac{I_{OUT}}{4 \times f_{SW} \times C_{IN}}$$

The capacitance value is less important than the RMS current rating. A single 2.2μF X5R capacitor is sufficient in most applications.

Output Inductor L

Consider the following when choosing this inductor:

- 1) Choose the inductance to provide a ripple current that is approximately 40% of the maximum output current. The recommended inductance is calculated as:

$$L = \frac{V_{OUT}(1 - V_{OUT}/V_{IN,MAX})}{f_{SW} \times I_{OUT,MAX} \times 0.4}$$

where f_{SW} is the switching frequency and $I_{OUT,MAX}$ is the maximum load current.

The SY21061 has high tolerance for ripple current amplitude variation. As a result, the final choice of inductance can vary slightly from the calculated value with no significant performance impact.

- 2) The inductor's saturation current rating must be greater than the peak inductor current under full load:

$$I_{SAT,MIN} > I_{OUT,MAX} + \frac{V_{OUT}(1 - V_{OUT}/V_{IN,MAX})}{2 \times f_{SW} \times L}$$

- 3) The DCR of the inductor and the core loss at the switching frequency must be low enough to achieve the desired efficiency requirement. Choose an inductor with DCR less than 50mΩ to achieve good overall efficiency.

Output Capacitor C_{OUT}

Select the output capacitor C_{OUT} to handle the output ripple requirements. Both steady state ripple and transient requirements must be taken into consideration when selecting the component. For the best performance, use an X5R or better grade ceramic capacitor with a 25V rating and capacitance greater than 22μF.

For applications where the design must meet stringent ripple requirements, the following considerations must be followed:

The output voltage ripple at the switching frequency is caused by the inductor current ripple (ΔI_L) on the output capacitor's ESR (ESR ripple), as well as the stored charge (capacitive ripple).

When calculating total ripple, consider both.

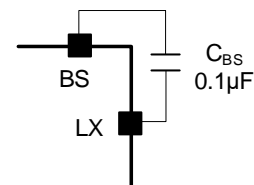
$$V_{RIPPLE,ESR} = \Delta I_L \times ESR$$

$$V_{RIPPLE,CAP} = \frac{\Delta I_L}{8 \times C_{OUT} \times f_{SW}}$$

The capacitive ripple might be higher because the effective capacitance for ceramic capacitors decreases with the voltage across the terminals. The voltage derating is usually included as a chart in the capacitor datasheet, and the ripple can be recalculated after taking the target output voltage into account.

External Bootstrap Capacitor

This external bootstrap capacitor provides the gate driver voltage for internal power MOSFET. A 0.1μF low-ESR ceramic capacitor connected between the BS pin and the LX pin is recommended.

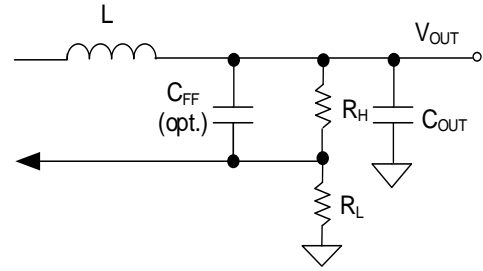


Rectifier Diode

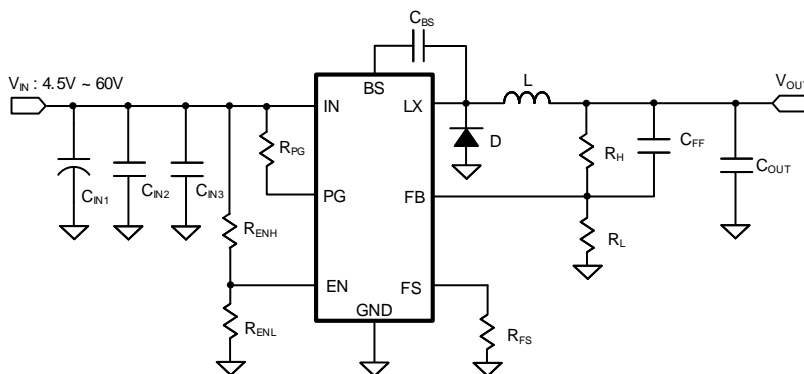
To accommodate the device high switching speed, choose a Schottky diode with low forward voltage and fast switching speed. The diode's voltage rating must be higher than the Buck converter maximum input voltage, and the diode's average and peak current rating should be greater than the Buck converter output average current and peak current.

Load Transient Consideration

The device integrates the compensation components to achieve good stability and fast transient responses. In some applications, adding a small ceramic capacitor in parallel with R_H may further speed up the load transient response. It is recommended for applications with large load transient step requirements.



Application Schematic ($V_{OUT} = 5V$)



BOM List

Reference Designator	Description	Part Number	Manufacturer
C _{IN1}	47 μ F/50V (electrolytic capacitor)		
C _{IN2}	2.2 μ F/100V/X7R, 1206	C3216X7R2A225KT	TDK

C _{IN3}	0.1μF/100V/X5R, 0603	C3216X5R2H104KT	TDK
C _{OUT}	22μF/25V/X5R, 1206	C3216X5R1E226M	TDK
C _{BS}	100nF/50V/X7R, 0603	C1608X7R1H104K	TDK
C _{FF}	22pF/50V/C0G, 0603	C1608C0G1H220J	TDK
L	10μH/Inductor, 7.5A	PCMB104T-100MS	CYNTEC
D	3A/100V	SS310	
R _H	105kΩ, 1%, 0603		
R _L	20kΩ, 1%, 0603		
R _{ENH}	10kΩ, 1%, 0603		
R _{ENL}	1MΩ, 1%, 0603		
R _{FS}	200kΩ, 1%, 0603		
R _{PG}	100kΩ, 1%, 0603		

Recommended Component Values for Typical Applications

V _{OUT} (V)	R _H (kΩ)	R _L (kΩ)	C _{FF} (pF)	L/Part Number	C _{OUT}
5	105	20	22	10μH/PCMB104T-100MS	22μF/25V/X5R, 1206
12	105	7.5	22	22μH/PCMB104T-220MS	22μF/25V/X5R, 1206

Layout Design

Follow these PCB layout guidelines for optimal performance and thermal dissipation:

- **Input Capacitors:** Place the input capacitors close to the IN and GND pins, minimizing the loop formed by these connections. The input capacitor should be connected to the IN and GND using wide copper areas.
- **Output Capacitor:** Connect the C_{OUT} negative terminal to the GND pin using wide copper traces instead of vias, in order to achieve better accuracy and stability of output voltage.
- **Feedback Network:** Place the feedback components (R_H, R_L, and C_{FF}) as close to the FB pin as possible.

Avoid routing the feedback line near LX, or other high-frequency signals as it is noise-sensitive. Use a Kelvin connection to connect with C_{OUT} rather than the inductor output terminal.

- **LX Connection:** Keep the LX area small to prevent excessive EMI, while providing a wide copper trace to minimize parasitic resistance and inductance.
- **EN Signal:** It is not recommended to connect EN signal directly to V_{IN} . Use a resistor with a value between 1k Ω and 1M Ω if it is pulled high to V_{IN} .
- **FS Resistor:** Place the FS resistor close to the FS and GND pins, minimizing the loop formed by these connections.
- **GND Vias:** Place an adequate number of vias on the GND layer around the device for better thermal performance. The exposed GND pad should be connected to a copper area larger than its size. Place multiple GND vias on it for heat dissipation.
- **PCB Board:** To achieve the best thermal and noise performance, maximize the PCB copper area connecting to the GND pin. A ground plane is highly recommended if board space allows. Connect the ground pad to a large copper area to enhance thermal performance.

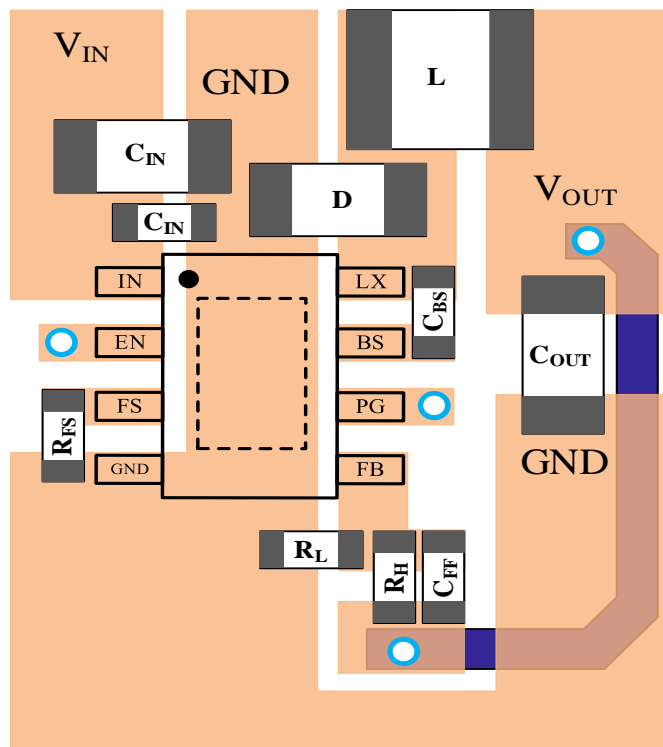
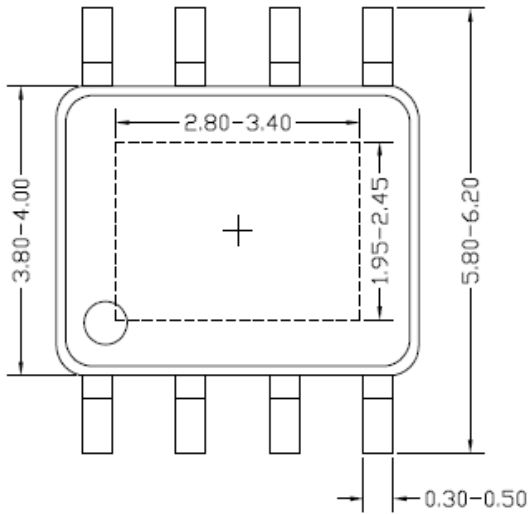
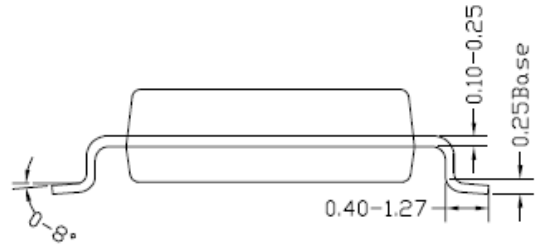


Figure 5. Suggested PCB Layout

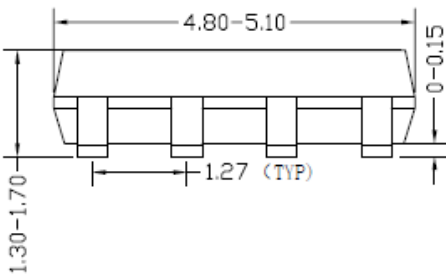
SO8E Package Outline and PCB Layout



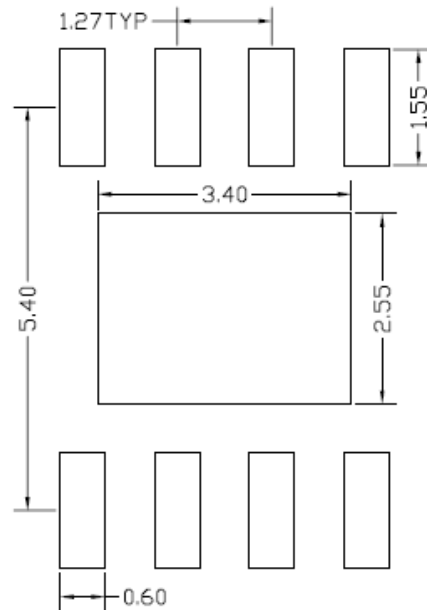
Top view



Side view



Front view

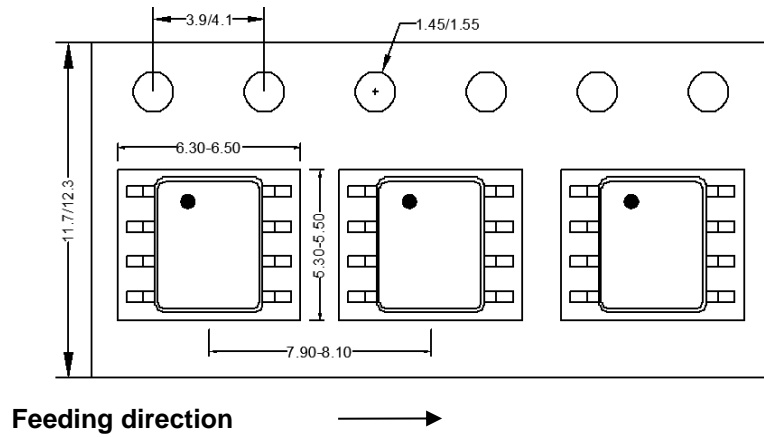


Recommended PCB layout (reference only)

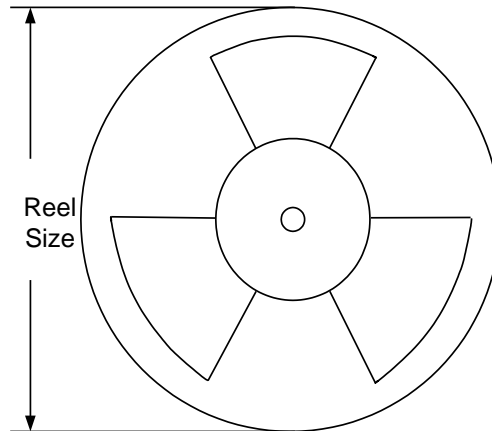
Note: All dimensions are in millimeters and exclude mold flash and metal burr.

Taping and Reel Specification

SO8E taping orientation



Carrier tape and reel specification for packages



Package Type	Tape Width (mm)	Pocket Pitch (mm)	Reel Size (Inch)	Trailer Length (mm)	Leader Length (mm)	Qty per Reel
SO8E	12	8	13"	400	400	2500

Others: NA



Revision History

The revision history provided is for informational purposes only and is believed to be accurate, however, not warranted. Please make sure that you have the latest revision.

Date	Revision	Change
Aug.30, 2023	Revision 1.0	Language improvements for clarity.
Apr.21, 2020	Revision 0.9	Initial Release



IMPORTANT NOTICE

- 1. Right to make changes.** Silergy and its subsidiaries (hereafter Silergy) reserve the right to change any information published in this document, including but not limited to circuitry, specification and/or product design, manufacturing or descriptions, at any time and without notice. This document supersedes and replaces all information supplied prior to the publication hereof. Buyers should obtain the latest relevant information before placing orders and should verify that such information is current and complete. All semiconductor products are sold subject to Silergy's standard terms and conditions of sale.
- 2. Applications.** Application examples that are described herein for any of these products are for illustrative purposes only. Silergy makes no representation or warranty that such applications will be suitable for the specified use without further testing or modification. Buyers are responsible for the design and operation of their applications and products using Silergy products. Silergy or its subsidiaries assume no liability for any application assistance or designs of customer products. It is customer's sole responsibility to determine whether the Silergy product is suitable and fit for the customer's applications and products planned. To minimize the risks associated with customer's products and applications, customer should provide adequate design and operating safeguards. Customer represents and agrees that it has all the necessary expertise to create and implement safeguards which anticipate dangerous consequences of failures, monitor failures and their consequences, lessen the likelihood of failures that might cause harm and take appropriate remedial actions. Silergy assumes no liability related to any default, damage, costs or problem in the customer's applications or products, or the application or use by customer's third-party buyers. Customer will fully indemnify Silergy, its subsidiaries, and their representatives against any damages arising out of the use of any Silergy components in safety-critical applications. It is also buyers' sole responsibility to warrant and guarantee that any intellectual property rights of a third party are not infringed upon when integrating Silergy products into any application. Silergy assumes no responsibility for any said applications or for any use of any circuitry other than circuitry entirely embodied in a Silergy product.
- 3. Limited warranty and liability.** Information furnished by Silergy in this document is believed to be accurate and reliable. However, Silergy makes no representation or warranty, expressed or implied, as to the accuracy or completeness of such information and shall have no liability for the consequences of use of such information. In no event shall Silergy be liable for any indirect, incidental, punitive, special or consequential damages, including but not limited to lost profits, lost savings, business interruption, costs related to the removal or replacement of any products or rework charges, whether or not such damages are based on tort or negligence, warranty, breach of contract or any other legal theory. Notwithstanding any damages that customer might incur for any reason whatsoever, Silergy' aggregate and cumulative liability towards customer for the products described herein shall be limited in accordance with the Standard Terms and Conditions of Sale of Silergy.
- 4. Suitability for use.** Customer acknowledges and agrees that it is solely responsible for compliance with all legal, regulatory and safety-related requirements concerning its products, and any use of Silergy components in its applications, notwithstanding any applications-related information or support that may be provided by Silergy. Silergy products are not designed, authorized or warranted to be suitable for use in life support, life-critical or safety-critical systems or equipment, nor in applications where failure or malfunction of a Silergy product can reasonably be expected to result in personal injury, death or severe property or environmental damage. Silergy assumes no liability for inclusion and/or use of Silergy products in such equipment or applications and therefore such inclusion and/or use is at the customer's own risk.
- 5. Terms and conditions of commercial sale.** Silergy products are sold subject to the standard terms and conditions of commercial sale, as published at <http://www.silergy.com/stdterms>, unless otherwise agreed in a valid written individual agreement specifically agreed to in writing by an authorized officer of Silergy. In case an individual agreement is concluded only the terms and conditions of the respective agreement shall apply. Silergy hereby expressly objects to and denies the application of any customer's general terms and conditions with regard to the purchase of Silergy products by the customer.
- 6. No offer to sell or license.** Nothing in this document may be interpreted or construed as an offer to sell products that is open for acceptance or the grant, conveyance or implication of any license under any copyrights, patents or other industrial or intellectual property rights. Silergy makes no representation or warranty that any license, either express or implied, is granted under any patent right, copyright, mask work right, or other intellectual property right. Information published by Silergy regarding third-party products or services does not constitute a license to use such products or services or a warranty or endorsement thereof. Use of such information may require a license from a third party under the patents or other intellectual property of the third party, or a license from Silergy under the patents or other intellectual property of Silergy.

For more information, please visit: www.silergy.com

© 2023 Silergy Corp.

All Rights Reserved.