



T315XW01 VK (QD32HL06)

2/33

Document Version : 02

Date : 200611/02

Product Specifications

31.5" WXGA Color TFT-LCD Module

Model Name: T315XW01 VK**(QD32HL06 Rev.02)****() Preliminary Specifications****(*) Final Specifications**



T315XW01 VK (QD32HL06)

3/33

These specification sheets are the proprietary product of **AUO Optronics Inc. ("AUO")** and include materials protected under copyright of **AUO**. Do not reproduce or cause any third party to reproduce them in any form or by any means, electronic or mechanical, for any purpose, in whole or in part, without the express written permission of **AUO**.

The device listed in these technical literature sheets was designed and manufactured for use in OA equipment.

In case of using the device for applications such as control and safety equipment for transportation (aircraft, trains, automobiles, etc.), rescue and security equipment and various safety related equipment which require higher reliability and safety, take into consideration that appropriate measures such as fail-safe functions and redundant system design should be taken.

Do not use the device for equipment that requires an extreme level of reliability, such as aerospace applications, telecommunication equipment (trunk lines), nuclear power control equipment and medical or other equipment for life support.

AUO assumes no responsibility for any damage resulting from the use of the device, which does not comply with the instructions, and the precautions specified in these technical literature sheets.

Contact and consult with an **AUO** sales representative for any questions about this device.



T315XW01 VK (QD32HL06)

4/33

Revision History			
Ver.	Date	ECN NO.	Change Content
01	June 20,2006	NA	Product specification initiation
02	Nov 02 2006	CECN-31T01-06 10-01	<ul style="list-style-type: none"> 1. Update Produce spec document format to AUO standard. 2. Update AUO model name QD32HL06 Rev02 → T315XW01 VK 3. Update Serial label & carton label format. (page 26)



T315XW01 VK (QD32HL06)

5/33

Content List

	Page
1. Application	6
2. Overview	6
3. General Specifications	6
4. Input Terminals	7
5. Absolute Maximum Ratings	14
6. Electrical Characteristics	15
7. Timing Characteristics of LCD module input signals	18
8. Input Signals, Basic Display Colors and Gray Scale of Each Color	20
9. Optical Characteristics	21
10. Display Quality	23
11. Handling Precautions	23
12. Reliability Test Items	24
13. Others (Label & Pallet packing)	25
14. Drawing	27
15. Packing	28
16. Reliability test criteria	32



T315XW01 VK (QD32HL06)

6/33

1. Application

This specification applies to a color TFT-LCD module, T315XW01 VK (QD32HL06)

2. Overview

This module is a color active matrix LCD module incorporating amorphous silicon TFT (Thin Film Transistor). It is composed of a color TFT-LCD panel; driver ICs, control circuit and power supply circuit and a backlight unit. Graphics and texts can be displayed on a 1366x3x768 dots panel with 16.7 million colors by using the LVDS (Low Voltage Differential Signaling) interface, 8-bit driving method and supplying +5V DC supply voltage for TFT-LCD panel driving.

The TFT-LCD panel used for this module has fast response time. A low-reflection and higher-color-saturation type color filter is also used for this panel. Therefore, high-brightness and high-contrast image, which is suitable for multimedia use, can be obtained by using this module.

[Features]

- 1) High aperture panel; high brightness
- 2) Brilliant and high contrast image
- 3) High speed response
- 4) WXGA resolution, 16:9
- 5) LVDS interface
- 6) QSV technology
- 7) Over shoot driving technology
- 8) Wide viewing angle

3. General Specifications

Parameter	Specifications	Unit
Display size	80.04 (31.5") Diagonal	cm
Active area	697.685 (H)×392.256 (V)	mm
Pixel format	1366 (H)×768 (V)	Pixel
	(1 pixel = R+G+B dots)	
Pixel pitch	0.51075(H) × 0.51075(V)	mm
Pixel configuration	R,G, B vertical stripe	
Display mode	Normally Black	
Unit outline dimensions	760.0 (W)×450.0 (H)×48.0(D)	mm
Weight	7500+/-300	g
Surface treatment	Anti-glare, low reflection coating and hard-coating 2H	
Lamp Quantity	16 straight lamps	pcs



T315XW01 VK (QD32HL06)

7/33

4. Input Terminals

4-1. TFT-LCD panel driving pin assignment

CN1 (Interface signals and +5V DC power supply)

Using connector: FI-X30SSL-HF (JAE) or equivalent

Mating connector: cable type FI-X30HL, FI-X30HL-T, FI-X30H, FI-X30M, FI-X30C2EL, FI-X30C2L, FI-X30C2L-T, FI-X30C, FI-X30M, JF04X0X030 (JAE)

Pin NO.	Symbol	Function	Remark
1	V _{CC}	+5V input	【Note 3】
2	V _{CC}	+5V input	
3	V _{CC}	+5V input	
4	V _{CC}	+5V input	
5	GND	Power Ground	【Note 1】
6	GND	Power Ground	
7	GND	Power Ground	
8	GND	Power Ground	
9	LVDS SELECT	Low for Normal (NS), High/Open for JEIDA	【Note 2, 4】 Default JEIDA type.
10	NC	Open	
11	GND	Ground	
12	RXIN0-	LVDS data input (-)	
13	RXIN0+	LVDS data input (+)	
14	GND	Ground	
15	RXIN1-	LVDS data input (-)	
16	RXIN1+	LVDS data input (+)	
17	GND	Ground	
18	RXIN2-	LVDS data input (-)	
19	RXIN2+	LVDS data input (+)	
20	GND	Ground	
21	RXCLK-	Clock signal (-)	
22	RXCLK+	Clock signal (+)	
23	GND	Ground	
24	RXIN3-	LVDS data input (-)	
25	RXIN3+	LVDS data input (+)	
26	GND	Ground	
27	R/L	Horizontal shift direction	【Note 5】 Default L:GND
28	U/D	Vertical shift direction	【Note 5】 Default L:GND
29	Reserved	Open	
30	Reserved	Open	

【Note 1】 All GND(ground) pins should be connected together and to V_{CC} which should also be connected to the LCDs metal frame.

©Copyright AU Optonics, Inc.

January, 2006 All Rights Reserved. T315XW01 VK - Specs. Ver 02

7/33

No. Reproduction and Redistribution Allowed



T315XW01 VK (QD32HL06)

8/33

【Note 2】 Relation between LVDS signals and actual data shows below section (7-1).

【Note 3】 All V_{CC} (power supply) pins should be connected together.

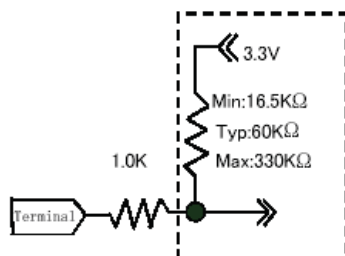
【Note 4】 LVDS Select

Transmitter		SELLVDS	
Pin No	Data	=L(GND)	=H(3.3V) or Open
51	TA0	R0(LSB)	R2
52	TA1	R1	R3
54	TA2	R2	R4
55	TA3	R3	R5
56	TA4	R4	R6
3	TA5	R5	R7(MSB)
4	TA6	G0(LSB)	G2
6	TB0	G1	G3
7	TB1	G2	G4
11	TB2	G3	G5
12	TB3	G4	G6
14	TB4	G5	G7(MSB)
15	TB5	B0(LSB)	B2
19	TB6	B1	B3
20	TC0	B2	B4
22	TC1	B3	B5
23	TC2	B4	B6
24	TC3	B5	B7(MSB)
27	TC4	NA	NA
28	TC5	NA	NA
30	TC6	DE(*)	DE(*)
50	TD0	R6	R0(LSB)
2	TD1	R7(MSB)	R1
8	TD2	G6	G0(LSB)
10	TD3	G7(MSB)	G1
16	TD4	B6	B0(LSB)
18	TD5	B7(MSB)	B1
25	TD6	NA	NA

NA: Not Available

(*) Since the display position is prescribed by the rise of DE (Display Enable) signal, please do not fix DE signal during operation at "High."

The equivalent circuit figure of the terminal:



©Copyright AU Optonics, Inc.

January, 2006 All Rights Reserved. T315XW01 VK - Specs. Ver 02

8/33

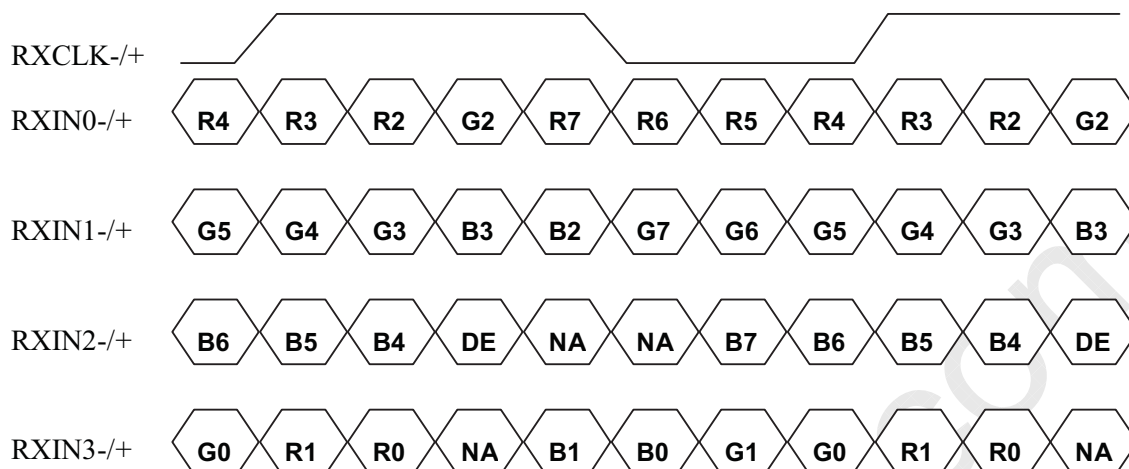
No. Reproduction and Redistribution Allowed



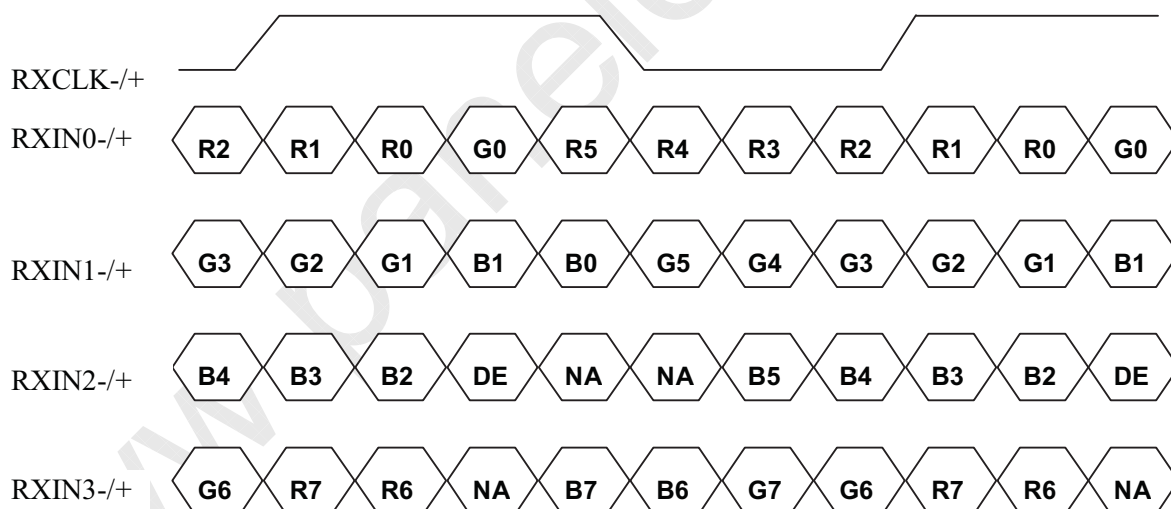
T315XW01 VK (QD32HL06)

9/33

SELLVDS=High(3.3 V)/ Open



SELLVDS=LOW (GND)





T315XW01 VK (QD32HL06)

10/33

【Note 5】 Display reversal function

① Normal (Default)

R/L : L (GND) U/D : L (GND)



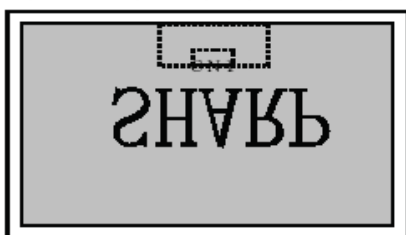
② Horizon reverse image

R/L : H (3.3V) U/D : L (GND)



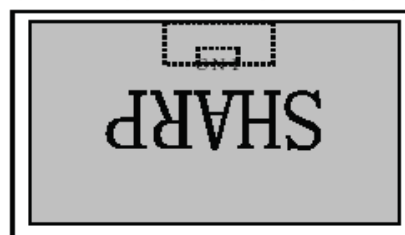
③ Vertical reverse image

R/L : L (GND) U/D : H (3.3V)

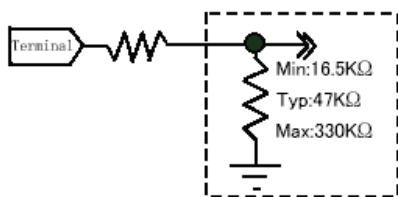


④ Horizon and vertical image

R/L : H (3.3V) U/D : H (3.3V)



The equivalent circuit figure of the terminal:





T315XW01 VK (QD32HL06)

11/33

4-2 Over Shoot driving pin assignment

O/S driving pin assignment and function as following,

Using connector (CN2): SM07B-SRSS-TB-A (JST) or equivalent.

Mating connector: SHR-07V-S or SHR-07V-S-B (JST)

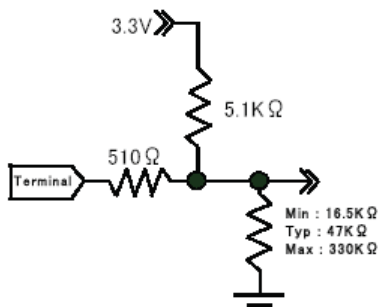
Pin NO.	Symbol	Function	Default	Remark
1	Frame	Frame frequency setting H:60Hz, L:50Hz	Pull up: 3.3V	【Note 2】
2	O/S test	O/S operation setting H:O/S_ON, L:O/S_OFF	Pull up: 3.3V 【Note 1】	【Note 2】
3	Test	GND	GND	【Note 2, 3】
4	Temp3	Data3 of panel surface temperature	Pull up: 3.3V	【Note 2, 3】
5	Temp2	Data2 of panel surface temperature	Pull up: 3.3V	【Note 2, 3】
6	Temp1	Data1 of panel surface temperature	Pull up: 3.3V	【Note 2, 3】
7	GND	GND		

Remark: L stands for low level voltage (GND).

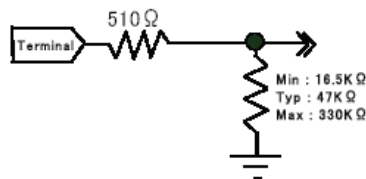
H stands for high level voltage (3.3V).

【Note 1】 Temp 1~3 should be “L” when the O/S setting is “L”, i.e O/S_OFF.

【Note 2】 The equivalent circuit figure of the terminal.



【Note 3】 The equivalent circuit figure of the terminal.



According the surface temperature of the panel (center), enter the optimum 3 bit signal into CN2 pin 4, 5, 6 to achieve O/S control.

Pin no.	Surface temperature of panel							
	0~5°C	5~10°C	10~15°C	15~20°C	20~25°C	25~30°C	30~35°C	≥35°C
4	L	L	L	L	H	H	H	H
5	L	L	H	H	L	L	H	H
6	L	H	L	H	L	H	L	H

Remark: 1. L: low level voltage (GND); H: high level voltage (3.3V).

2. Optimum parameters option depends on display performance at overlapping temperatures (such as 5/10/15/20/25/30/35degC)

©Copyright AU Optonics, Inc.

January, 2006 All Rights Reserved. T315XW01 VK - Specs. Ver 02

11/33

No. Reproduction and Redistribution Allowed

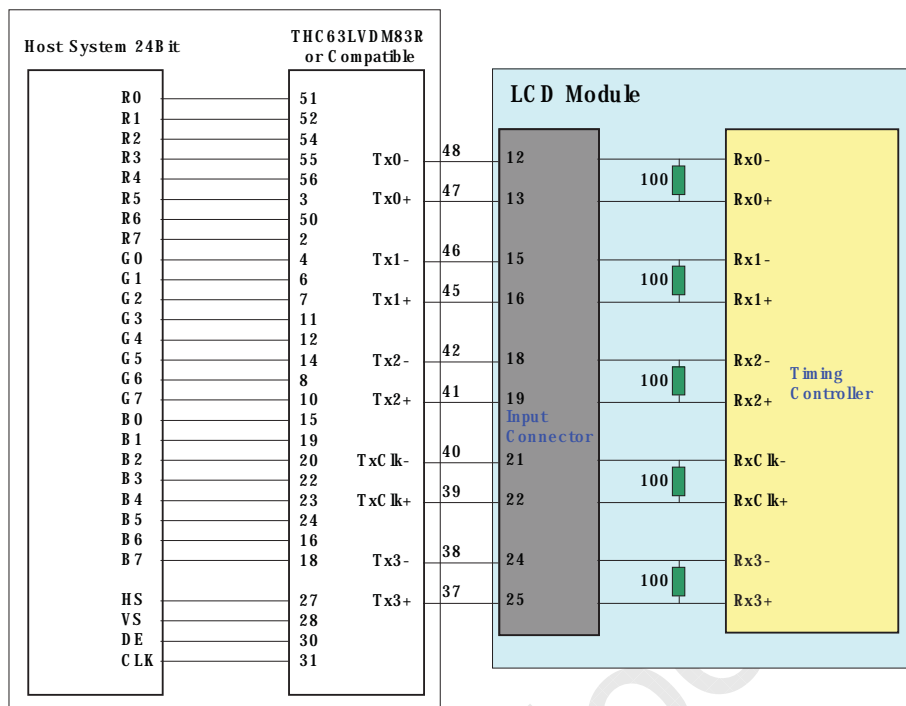


T315XW01 VK (QD32HL06)

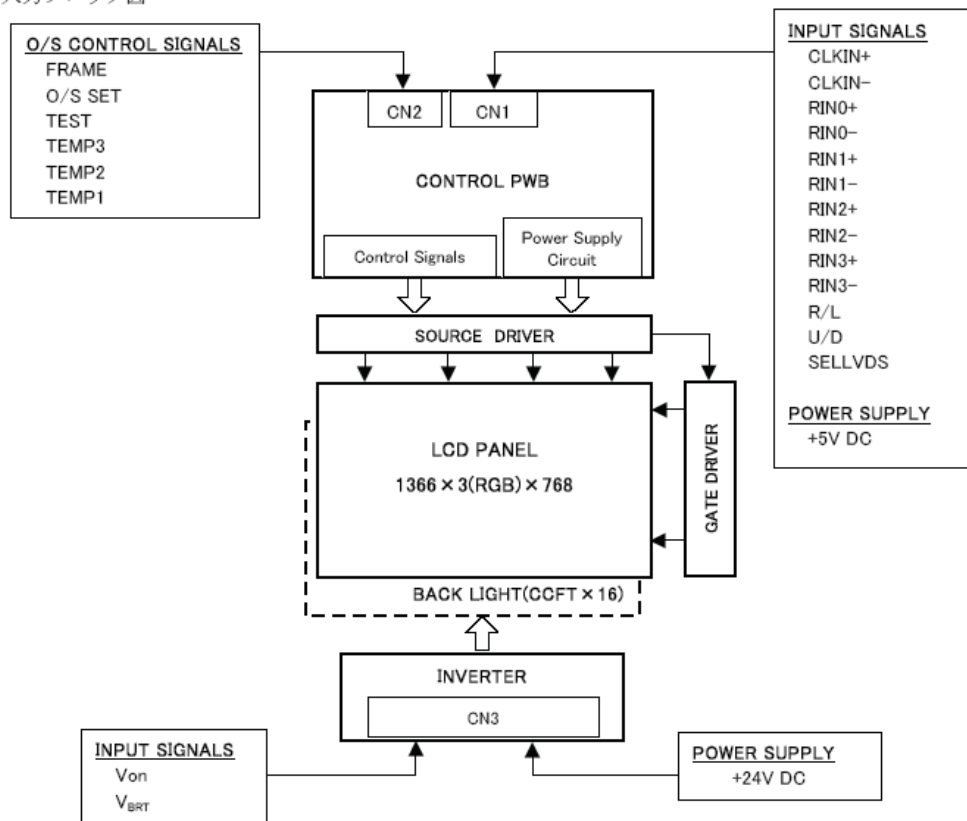
12/33

4-2 Interface block diagram

Corresponding transmitter: THC63LVDM83R (Thine) or equivalent device.



・入力ブロック図



©Copyright AU Optonics, Inc.

January, 2006 All Rights Reserved. T315XW01 VK - Specs. Ver 02

12/33

No. Reproduction and Redistribution Allowed



T315XW01 VK (QD32HL06)

13/33

4-3. Backlight driving

4-3-1. Inverter connector

Using connector as following:

Connector	Type
CN3	B14 B-PH-SM3 TB (JST) or equivalent

Mating connector: PHR-14 (JST)

4-3-2 Pin assignment of inverter (CN3)

Pin No.	Symbol	Description	Remark
1	V _{DD}	+24V DC	
2	V _{DD}	+24V DC	
3	V _{DD}	+24V DC	
4	V _{DD}	+24V DC	
5	V _{DD}	+24V DC	
6	GND	Ground	
7	GND	Ground	
8	GND	Ground	
9	GND	Ground	
10	GND	Ground	
11	Reserved	Open	
12	BRTC	Backlight On/OFF signal	On : High (5.0V), Off : Low (0V)
13	BRTI	Luminance controlled by voltage method	【Note 1】
14	SGND	Open	

【Note 1】 Analog PWM – Pin no. 13 is used for the dimming control with input voltage from 0 to 3.3V.

	MIN	TYP	MAX	Function
Input voltage (V)	0	<->	3.3	0V: Dark 3.3V: Bright
Brightness ratio (%)	20	<->	100	



T315XW01 VK (QD32HL06)

14/33

5. Absolute Maximum Ratings

LCD module

Parameter	Symbol	Condition	Ratings	Unit	Remark
Input Voltage (for control)	V _I	Ta=25°C	-0.3 ~ +5.0	V _{DC}	【Note1】
5 V Supply Voltage (for Pannel)	V _{CC}	Ta=25°C	0 ~ +6.0	V _{DC}	
Input Voltage (for inverter)	V _{brt}	Ta=25°C	0 ~ +6.0	V _{DC}	【Note2】
24V supply voltage (for Inverter)	V _{INV}	Ta=25°C	0 ~ +29	V _{DC}	
Storage temperature	T _{stg}	—	-25 ~ +60	°C	【Note3】
Operating temperature (Ambient)	T _{opa}	—	0 ~ +50	°C	

【Note1】 LVDS SELECT, R/L, U/D, Frame O/S SET, Temp3/2/1, TEST

【Note2】 BRTC,BRTI

【Note3】 Humidity : 95%RH Max. at Ta≤40°C.

Maximum wet-bulb temperature at 39°C or less at Ta>40°C.

No condensation.



T315XW01 VK (QD32HL06)

15/33

6. Electrical Characteristics

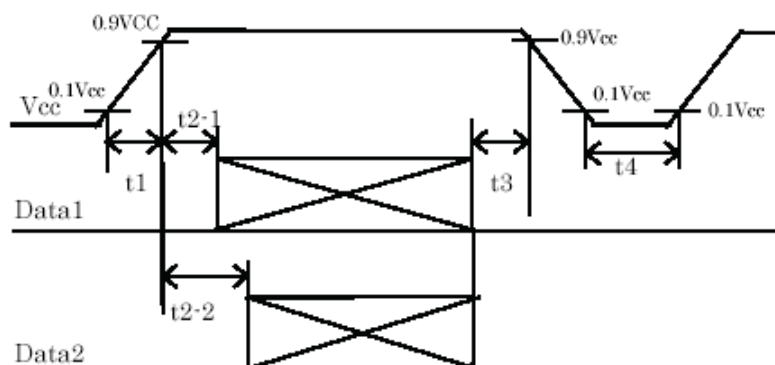
6-1TFT-LCD panel driving

Ta=25 C

Parameter		Symbol	Min.	Typ.	Max.	Unit	Remark
Vcc	Supply input voltage	Vcc	+4.5	+5.0	+5.5	V	【Note1】
	Supply input current	Icc		800	1600	mA	【Note2】
	Power description	PD		4.0	8.8	W	
	Rush current	I _{rush}			4000	mA	【Note9】
		T _{rush}			2	ms	
Permissive Input Ripple Voltage		V _{RP}			100	mV	V _{CC} =+5.0V
Differential input Threshold voltage	High	V _{TH}			+100	mV	V _{CM} =+1.2V 【Note8】
	Low	V _{TL}	-100			mV	
LVDS select (High)		V _{IH}	2.6	3.3	3.6	V	【Note3】
LVDS select (Low)		V _{IL}			0.7	V	
Input leak current (High)		I _{IH1}			100	μA	V _I =3.3V 【Note6】
		I _{IH2}			400	μA	V _I =3.3V 【Note7】
Input leak current (Low)		I _{IL1}			100	μA	V _I =0V 【Note4】
		I _{IL2}	—	—	400	μA	V _I =0V 【Note5】
Terminal resistor		R _T	—	100	—	Ω	Differential input

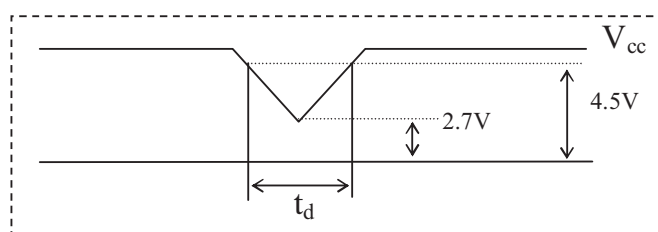
* V_{CM} : Common mode voltage of LVDS driver.

【Note1】 Input sequence condition for supply voltage


 $0 < t_1 \leq 10\text{ms}; 0 < t_{2-1} \leq 20\text{ms}; 10\text{ms} \leq t_{2-2}; 0 < t_3 \leq 1\text{s}; 1\text{s} \leq t_4; 200\text{ms} \leq t_5$

※ Data1: CLKIN±, RIN0±, RIN1±, RIN2±, RIN3±.

※ Data2: R/L, U/D, SELVDS, Frame, O/S SET, Temp1, 2, 3

V_{cc}-dip conditions1) $2.7\text{V} \leq V_{cc} < 4.5\text{V}$ $t_d \leq 10\text{ms}$ 2) $V_{cc} < 2.7\text{V}$ V_{cc}-dip conditions should also follow the On-off conditions for supply voltage

©Copyright AU Optronics, Inc.

January, 2006 All Rights Reserved. T315XW01 VK - Specs. Ver 02

15/33

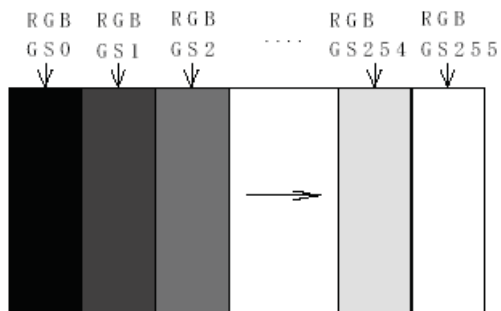
No. Reproduction and Redistribution Allowed



T315XW01 VK (QD32HL06)

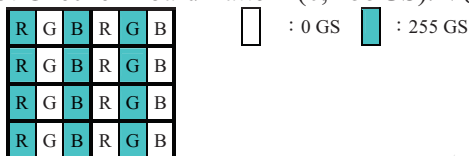
16/33

【Note2】 Consumption current typical was setup at the vertical gray 256 pattern as following one:

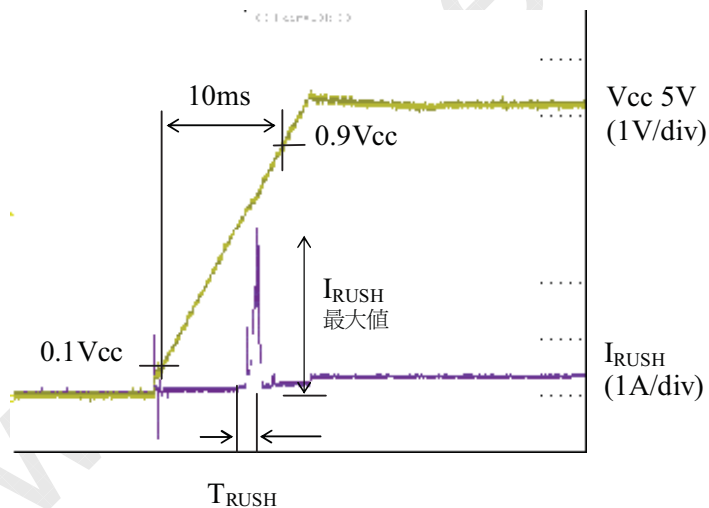


V_{CC} = 5.0 V
 CK = 82.0 MHz
 T_h = 20.67 μs

Max current condition: 1x1 dot Checker Board Pattern (0, 255GS). V_{CC} = +5V



- 【Note3】 R/L, U/D, SELLVDS, Frame, OS SET, Temp1, 2, 3, Test
- 【Note4】 R/L, U/D, Frame, O/S SET, Temp1, 2, 3, Test
- 【Note5】 SELLVDS
- 【Note6】 R/L, U/D, Frame, O/S SET, Temp1, 2, 3, Test
- 【Note7】 SELLVDS
- 【Note8】 CLKIN±, RIN0±, RIN1±, RIN2±, RIN3±.
- 【Note9】 Rush current





T315XW01 VK (QD32HL06)

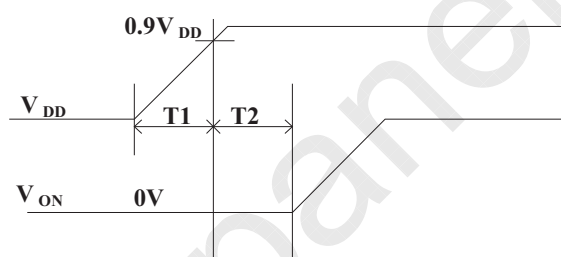
17/33

6-2. Backlight driving

The backlight system is a direct-lighting type with 16 CCFT (Cold Cathode Fluorescent Tube). The characteristics of the lamp are shown in the following table.

Parameter	Symbol	Min.	Typ.	Max.	Unit	Remark
Power Supply Input Voltage	V_{DD}	22.5	24.0	25.5	V	【Note1】
Power Supply Input Current	I_{DD1}		4.5	5.0	A	$V_{in}=24V, V_{BTT}=3.3V, V_{ON}=5V$ 【Note4】
	I_{DD2}		4.2	4.6		
Power Consumption	P_{DD1}	-	108		W	【Note5】
Ripple Voltage	V_{rf}	-	-	1000	mV	$V_{DD}=24V$
Diming Voltage	V_{BRT}	0	-	3.3	V	Input Impedance:100K Ω 【Note3】
BRTC(ON / OFF Voltage)	$V_{ON:H}$	3.0	5.0	6.0	V	High, input impedance: 8.2K Ω 【Note2】
	$V_{ON:L}$	0	-	1.0	V	
Lamp life time	LL	60000			Hours	【Note6】

【Note1】 Inverter power ON sequence:



$$100 \mu s < T1 \leq 300ms$$

$$1 \mu s \leq T2$$

【Note2】 V_{ON}

【Note3】 V_{BRT}

【Note4】 I_{DD1} : the value before 60 minutes after power supply is turned on.

I_{DD2} : the value after 60 minutes after power supply is turned on.

【Note5】 Calculated Value for reference ($I_{DD} \times V_{DD}$)

【Note6】 Lamp life time is defined as the time when brightness becomes 50% of the original value in the continuous operation under the condition of $T_a=25\pm 2^\circ C$ and brightness control.



T315XW01 VK (QD32HL06)

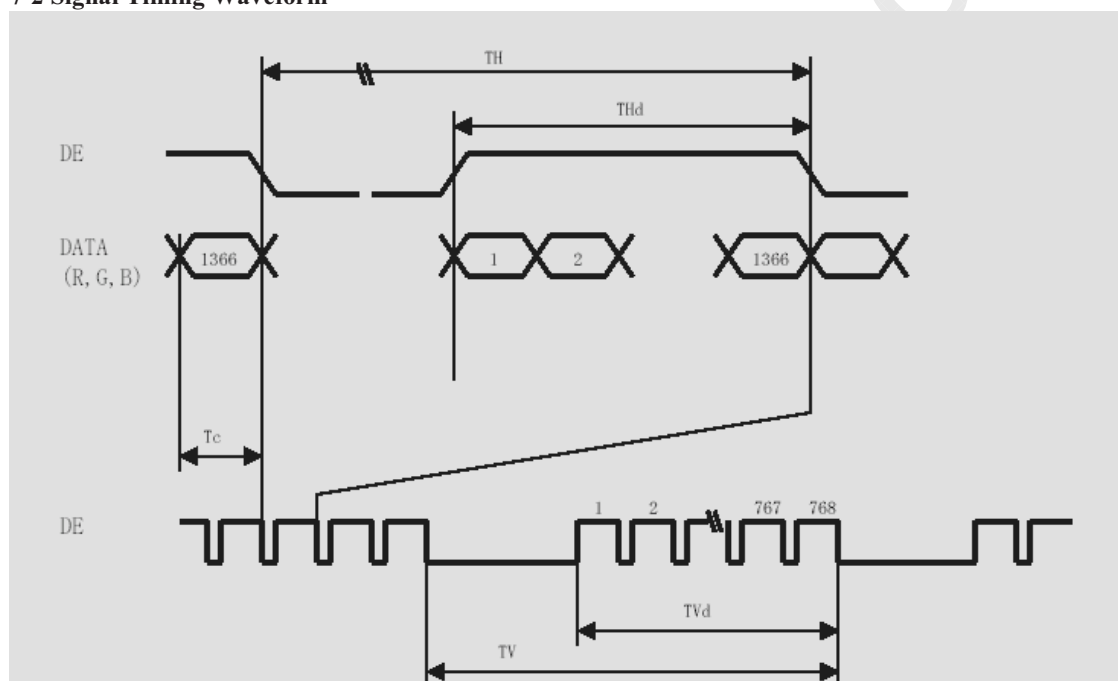
18/33

7. Timing characteristics of LCD module input signals

7-1. Timing characteristics

ITIME	Symbol		Min	Typ	Max	Unit
DCLK	Frequency	1/Tc	65	82	85	MHz
Enable signal	H-Period	TH	1560	1696	1940	CLOCK
			18.3	20.68		μs
	H-active (high)	THd	1366	1366	1366	CLOCK
	V-Period	TV	778	806	972	LINE
	V-active (high)	TVd	768	768	768	LINE

7-2 Signal Timing Waveform

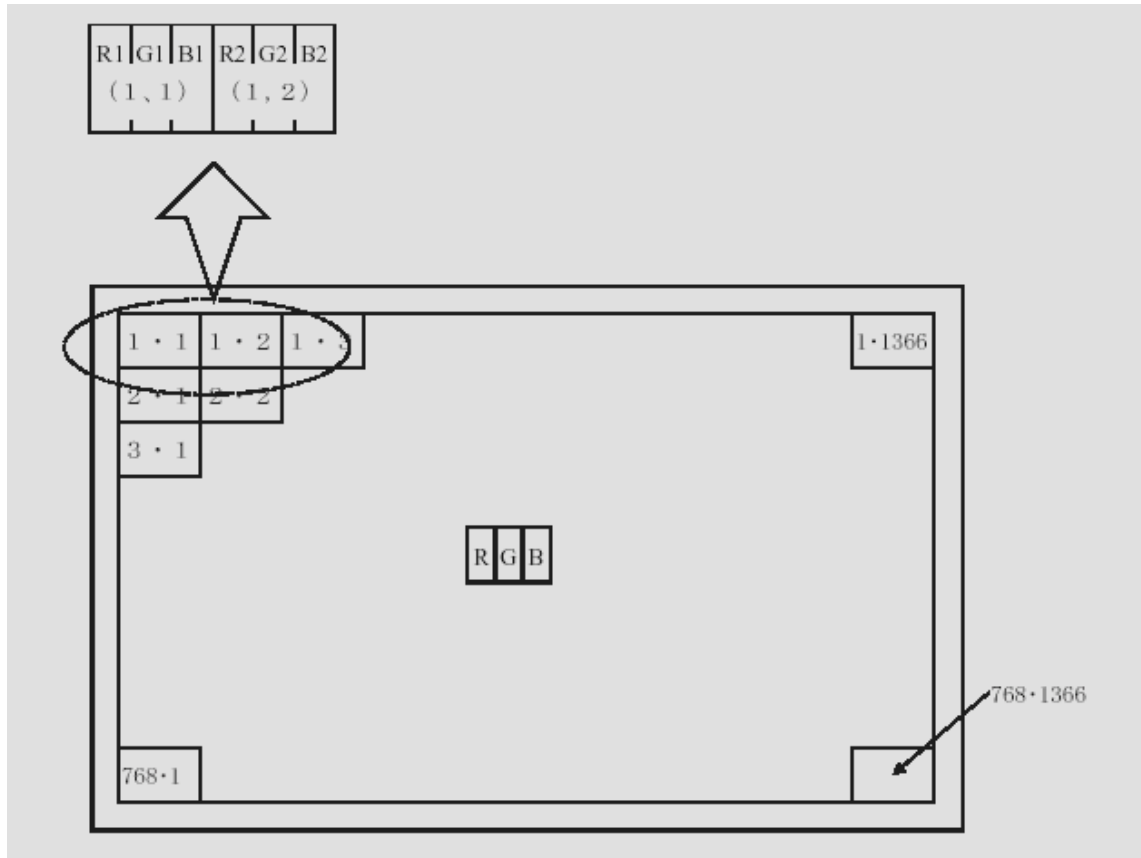




T315XW01 VK (QD32HL06)

19/33

7-3. Input Data Signals and Display Position on the screen





T315XW01 VK (QD32HL06)

20/33

8. Input Signals, Basic Display Colors and Gray Scale of Each Color

Colors & Gray scale	Data signal																									
	Gray Scale	R0	R1	R2	R3	R4	R5	R6	R7	G0	G1	G2	G3	G4	G5	G6	G7	B0	B1	B2	B3	B4	B5	B6	B7	
Basic Color	Black	—	0	0	0	0	0	0	0	0	0	0	0	0	0	0	0	0	0	0	0	0	0	0	0	0
	Blue	—	0	0	0	0	0	0	0	0	0	0	0	0	0	0	0	0	1	1	1	1	1	1	1	1
	Green	—	0	0	0	0	0	0	0	0	1	1	1	1	1	1	1	1	0	0	0	0	0	0	0	0
	Cyan	—	0	0	0	0	0	0	0	0	1	1	1	1	1	1	1	1	1	1	1	1	1	1	1	1
	Red	—	1	1	1	1	1	1	1	1	0	0	0	0	0	0	0	0	0	0	0	0	0	0	0	0
	Magenta	—	1	1	1	1	1	1	1	1	0	0	0	0	0	0	0	0	1	1	1	1	1	1	1	1
	Yellow	—	1	1	1	1	1	1	1	1	1	1	1	1	1	1	1	1	0	0	0	0	0	0	0	0
	White	—	1	1	1	1	1	1	1	1	1	1	1	1	1	1	1	1	1	1	1	1	1	1	1	1
Gray Scale of Red	Black	GS0	0	0	0	0	0	0	0	0	0	0	0	0	0	0	0	0	0	0	0	0	0	0	0	0
	↑	GS1	1	0	0	0	0	0	0	0	0	0	0	0	0	0	0	0	0	0	0	0	0	0	0	0
	Darker	GS2	0	1	0	0	0	0	0	0	0	0	0	0	0	0	0	0	0	0	0	0	0	0	0	0
	↑	↓				↓							↓								↓					
	↓	↓				↓							↓								↓					
	Brighter	GS253	1	0	1	1	1	1	1	1	0	0	0	0	0	0	0	0	0	0	0	0	0	0	0	0
	↓	GS254	0	1	1	1	1	1	1	1	0	0	0	0	0	0	0	0	0	0	0	0	0	0	0	0
	Red	GS255	1	1	1	1	1	1	1	1	0	0	0	0	0	0	0	0	0	0	0	0	0	0	0	0
Gray Scale of Green	Black	GS0	0	0	0	0	0	0	0	0	0	0	0	0	0	0	0	0	0	0	0	0	0	0	0	0
	↑	GS1	0	0	0	0	0	0	0	0	1	0	0	0	0	0	0	0	0	0	0	0	0	0	0	0
	Darker	GS2	0	0	0	0	0	0	0	0	0	1	0	0	0	0	0	0	0	0	0	0	0	0	0	0
	↑	↓																								
	↓	↓																								
	Brighter	GS253	0	0	0	0	0	0	0	0	1	0	1	1	1	1	1	1	0	0	0	0	0	0	0	0
	↓	GS254	0	0	0	0	0	0	0	0	0	1	1	1	1	1	1	1	0	0	0	0	0	0	0	0
	Green	GS255	0	0	0	0	0	0	0	0	1	1	1	1	1	1	1	1	0	0	0	0	0	0	0	0
Gray Scale of Blue	Black	GS0	0	0	0	0	0	0	0	0	0	0	0	0	0	0	0	0	0	0	0	0	0	0	0	0
	↑	GS1	0	0	0	0	0	0	0	0	0	0	0	0	0	0	0	0	1	0	0	0	0	0	0	0
	Darker	GS2	0	0	0	0	0	0	0	0	0	0	0	0	0	0	0	0	0	1	0	0	0	0	0	0
	↑	↓																								
	↓	↓																								
	Brighter	GS253	0	0	0	0	0	0	0	0	0	0	0	0	0	0	0	0	1	0	1	1	1	1	1	1
	↓	GS254	0	0	0	0	0	0	0	0	0	0	0	0	0	0	0	0	0	1	1	1	1	1	1	1
	Blue	GS255	0	0	0	0	0	0	0	0	0	0	0	0	0	0	0	0	1	1	1	1	1	1	1	1

0: Low level voltage, 1: High level voltage

Each basic color can be displayed in 256 gray scales from 8 bit data signals. According to the combination of total 24 bit data signals, the 16,777,216-color display can be achieved on the screen.



T315XW01 VK (QD32HL06)

21/33

9. Optical Characteristics

Ta=25°C, V_{cc}=+5V

Parameter		Symbol	Condition	Min.	Typ.	Max.	Unit	Remark
Viewing angle	L/R	θ_{21} , θ_{22}	CR \geq 10	70	88		Deg.	【Note1,4】
angle	U	θ_{11}		70	88		Deg.	
range	D	θ_{12}		70	88		Deg.	
Contrast ratio		C R n	$\theta = 0^\circ$	900	1200	—		【Note2,4】 V _{BRI} =3.3V
Rise time	τ_r				6		ms	【Note3】
Fall time	τ_d				6		ms	
Chromaticity of White (CIE 1931)		W _x		0.251	0.281	0.311		【Note4】 V _{BRI} =3.3V
		W _y		0.259	0.289	0.319		
Chromaticity of Red (CIE 1931)		R _x		0.609	0.639	0.669		
		R _y		0.306	0.336	0.366		
Chromaticity of Green (CIE 1931)		G _x		0.251	0.281	0.311		
		G _y		0.571	0.601	0.631		
Chromaticity of Blue (CIE 1931)		B _x		0.115	0.145	0.175		
		B _y		0.043	0.073	0.103		
Luminance of white		Y _L		460	500		Cd/m ²	【Note4】 V _{BRI} =3.3V
White Uniformity		δ_w (5P)		—	-	1.25		【Note5】
Color Temperature		CT			10000		°K	

Optical measurement condition:

1. The optical characteristics shall be measured in a dark room or equivalent state with the method shown in Fig.1.
2. The measurement shall be executed 60 minutes after lighting at rating.

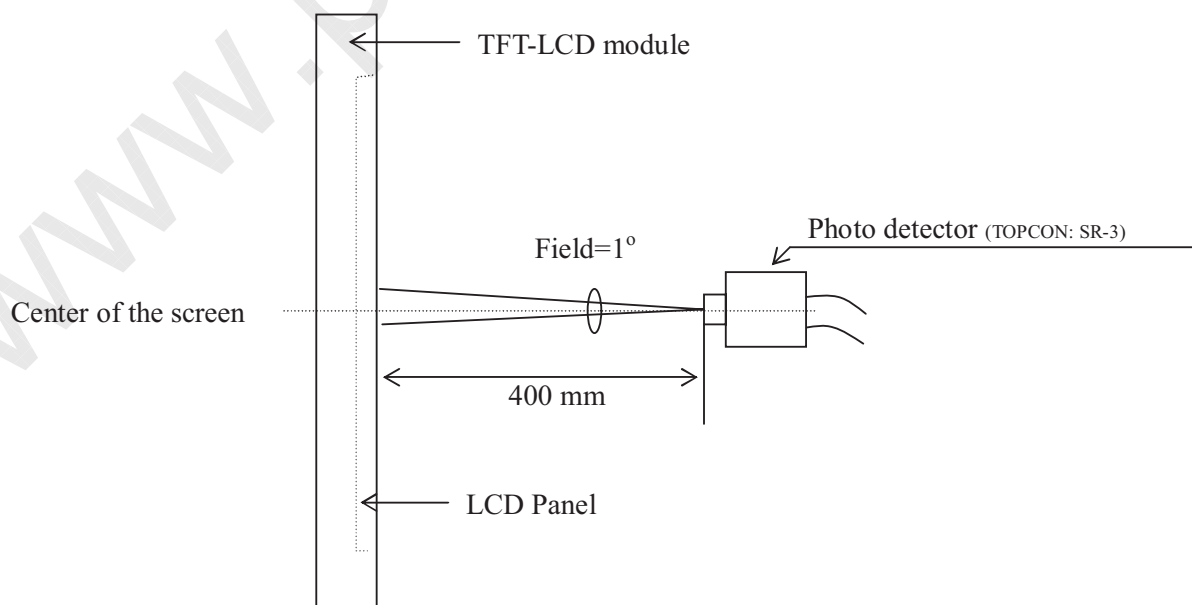


Fig 1. Optical characteristics measurement method

©Copyright AU Optronics, Inc.

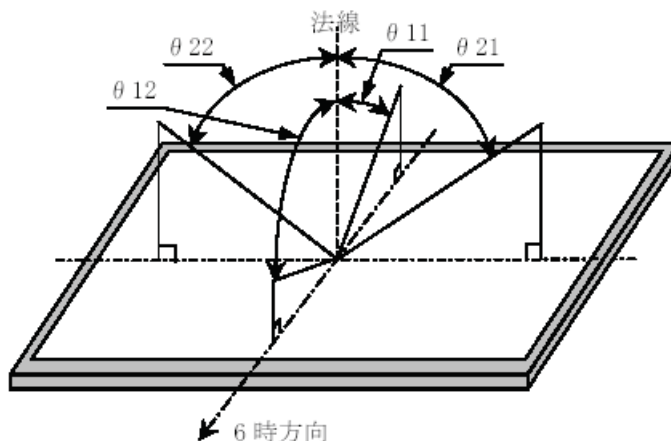
January, 2006 All Rights Reserved. T315XW01 VK - Specs. Ver 02

21/33

No. Reproduction and Redistribution Allowed



【Note1】 Definitions of viewing angle range:



【Note2】 Definition of contrast ratio:

The contrast ratio is defined as the following.

$$\text{Contrast Ratio (CR)} = \frac{\text{Luminance (brightness) with all pixels white}}{\text{Luminance (brightness) with all pixels black}}$$

【Note3】 Definition of response time:

The response time (τ_r and τ_d) is defined as the following figure and shall be measured by switching the input signal for "any level of gray (0%, 25%, 50%, 75% and 100%)" and "any level of gray (0%, 25%, 50%, 75% and 100%)".

輝度比	0%	25%	50%	75%	100%
0%		tr: 0%-25%	tr: 0%-50%	tr: 0%-75%	tr: 0%-100%
25%	td: 25%-0%		tr: 25%-50%	tr: 25%-75%	tr: 25%-100%
50%	td: 50%-0%	td: 50%-25%		tr: 50%-75%	tr: 50%-100%
75%	td: 75%-0%	td: 75%-25%	td: 75%-50%		tr: 75%-100%
100%	td: 100%-0%	td: 100%-25%	td: 100%-50%	td: 0%-75%	

t*: x-y...shift time from a luminance ratio(x) to another one(y)

$$\tau_r = \Sigma(\text{tr}:x-y)/10, \quad \tau_d = \Sigma(\text{td}:x-y)/10$$

【Note4】 This shall be measured at center of the screen.

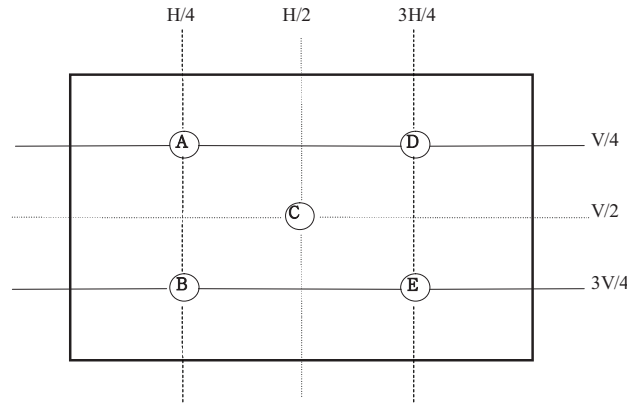


T315XW01 VK (QD32HL06)

23/33

【Note5】 Definition of white uniformity:

White uniformity is defined as the following number of measurement points within active area, formula are $\delta_w(5)(A \sim E)$. HxV : active area



$$\delta_w = \frac{\text{Maximum Luminance (of 5 points measurement)}}{\text{Minimum Luminance (of 5 points measurement)}}$$

【Note6】 This shall be measured at center of the screen.

Share of module quantity of luminance over 460cd/m^2 ; $\geq 90\%$

10. Display Quality

The display quality of the color TFT-LCD module shall be in compliance with the Incoming Inspection Standard.

11 · Handling Precautions

- a) Be sure to turn off the power supply when inserting or disconnecting the cable.
- b) Be sure to design the cabinet so that the module can be installed without any extra stress such as warp or twist.
- c) Since the front polarizer is easily damaged, pay attention not to scratch it.
- d) Wipe off water drop immediately. Long contact with water may cause discoloration or spots.
- e) When the panel surface is soiled, wipe it with absorbent cotton or other soft cloth.
- f) Since the panel is made of glass, it may break or crack if dropped or bumped on hard surface. Handle with care.
- g) Since CMOS LSI is used in this module, take care of static electricity and injure the human earth when handling.
- h) Observe all other precautionary requirements in handling components.
- i) This module has its circuitry PCBs on the rear side and should be handled carefully in order not to be stressed.
- j) Laminated film is attached to the module surface to prevent it from being scratched. Peel the film off slowly just before the use with strict attention to electrostatic charges. Ionized air shall be blown over during the action. Blow off the 'dust' on the polarizer by using an ionized nitrogen gun, etc...



T315XW01 VK (QD32HL06)

24/33

12. Reliability test items

No.	Test item	Conditions
1	High temperature storage test	Ta = 60°C, 1000h
2	Low temperature storage test	Ta = -25°C, 1000h
3	High temperature & High humidity operation test	Ta = 40°C, 95 %RH, 1000h
4	High temperature operation test	Ta = 50°C, 1000h
5	Low temperature operation test	Ta = 0°C, 1000h
6	Vibration test (non-operating)	Frequency: 10~500Hz, 1.0G, Test period: 3hours (1h for each direction of X, Y, Z)
7	Shock test (Non- operating)	Gravity: 50G Pulse width: 11ms, half sine wave Direction : ±X,±Y,±Z Once for each direction.
8	ESD	Contact-op: ±20kv, Contact-nop: ±20kv, Air-op: ±20kv, Air-nop: ±20kv, (Contact area is limited on metal bezel) C: 150PF R: 330Ω
9	Thermal cycle	Ta = -25, 1h ~ 60°C, 1h, 200 cycles
10	High temperature operation test 2 (shimi test)	Ta =60°C, 200h

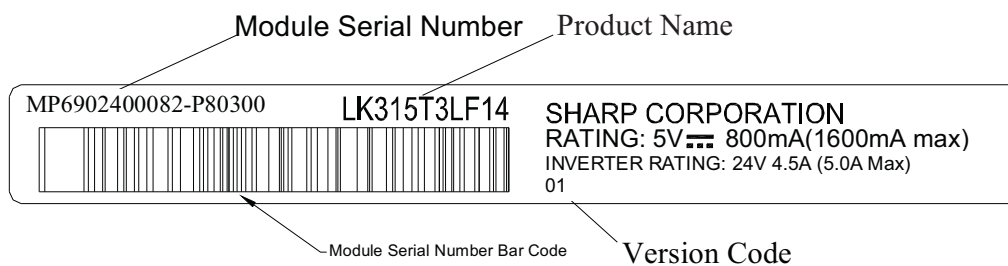


T315XW01 VK (QD32HL06)

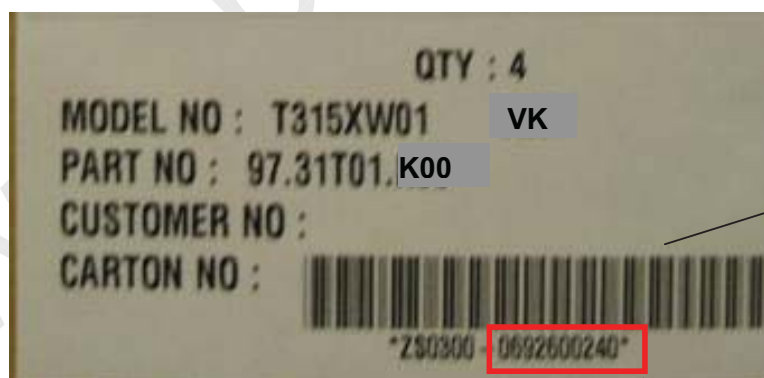
25/33

13 · Others

1) Lot No. Label:



2) Packing Label: 2 packing labels was attached on Carton shown as following.



Carton No. Bar Code

Carton No.

- Digital 1-2 : Year (06 = 2006)
- Digital 3 : Month (1,2,3,4,5,6,7,8,9,A,B,C)
- Digital 4-5: Day.
- Digital 6-10 : Carton Sequential Number.



T315XW01 VK (QD32HL06)

26/33

3) Pallet

By air transportation, there are 2-layer of cartons stacking on one pallet;

By ocean transportation, there are 3-layer of cartons stacking on one pallet.

For both air- and ocean- transportation, each layer has 6 cartons.

4) Maximum layer of carton 3-layer.

Notes:

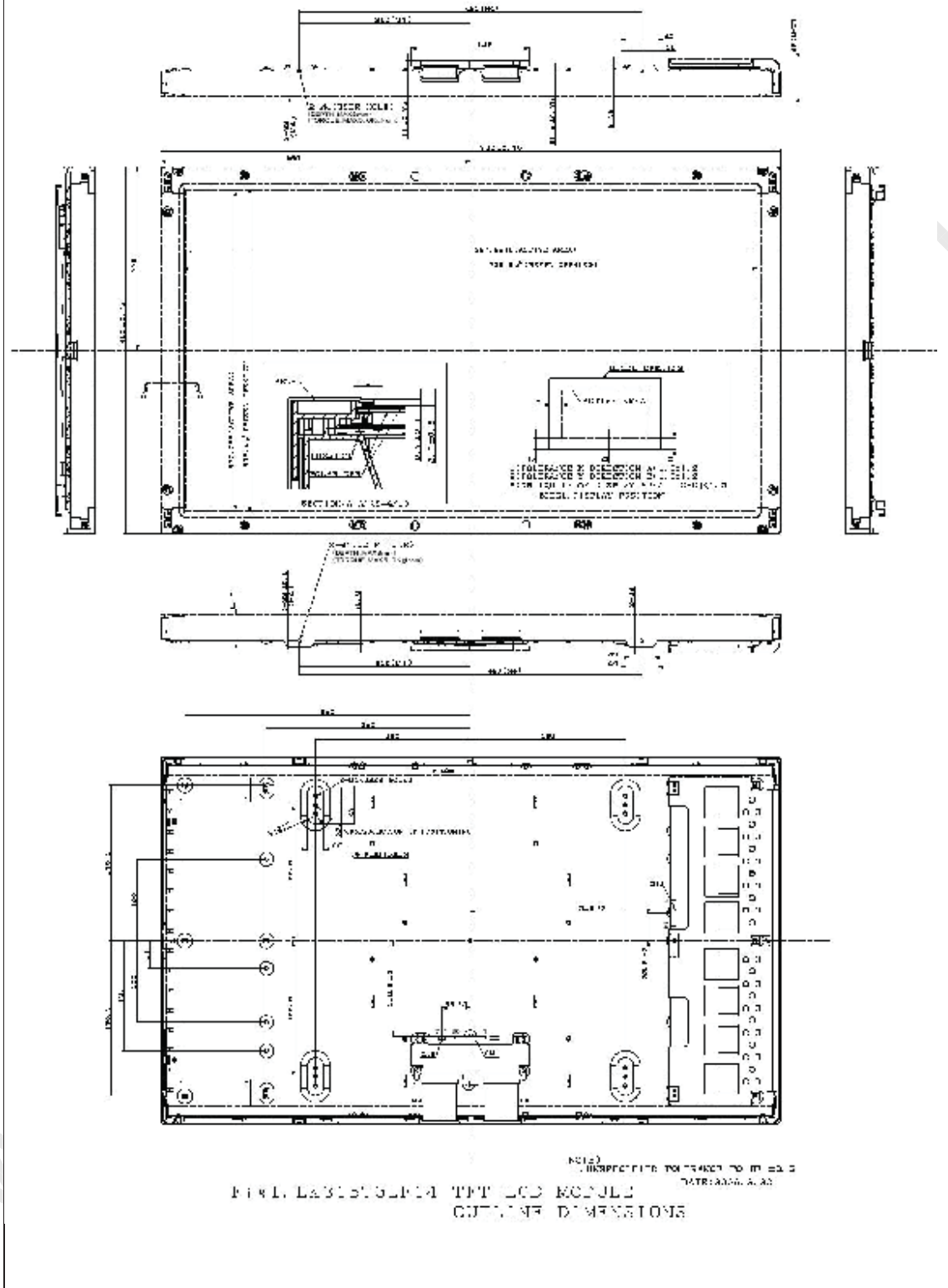
- 1) Adjusting volume has been set optimally before shipment, so do not change any adjusted value. If adjusted value is changed, the specification may not be satisfied.
- 2) Disassembling the module can cause permanent damage and should be strictly avoided.
- 3) Please be careful since image retention may occur when a fixed pattern is displayed for a long time.
- 4) If any problem occurs in relation to the description of this specification, it shall be resolved through discussion with spirit of cooperation.



T315XW01 VK (QD32HL06)

27/33

14. Drawing



©Copyright AU Optonics, Inc.

January, 2006 All Rights Reserved. T315XW01 VK - Specs. Ver 02

27/33

No. Reproduction and Redistribution Allowed

15. Packing

15-1 Packing: By air transportation (1 of 2)

Production	V32(QD32HL) LCD MODULE
carton outline	864(D)*360(W)*562(H)mm
carton weight	35.5kg (include modules)
pallet outline	1200(D)*930(W)*130(H)mm
pallet weight	15 kg
module/carton	4 pcs
module/stack	24 pcs
volume	1.42 m ³ m ³
Protector paper	1170*900 mm
Corner paper	50*50*750(8)mm(4x)
Cover	1200(L)*930(W)*100(H)mm,8t
Cover Weight	0.8 kg
Total outline	1200(D)*930(W)*1270(H)mm
total weights	228.8 kg

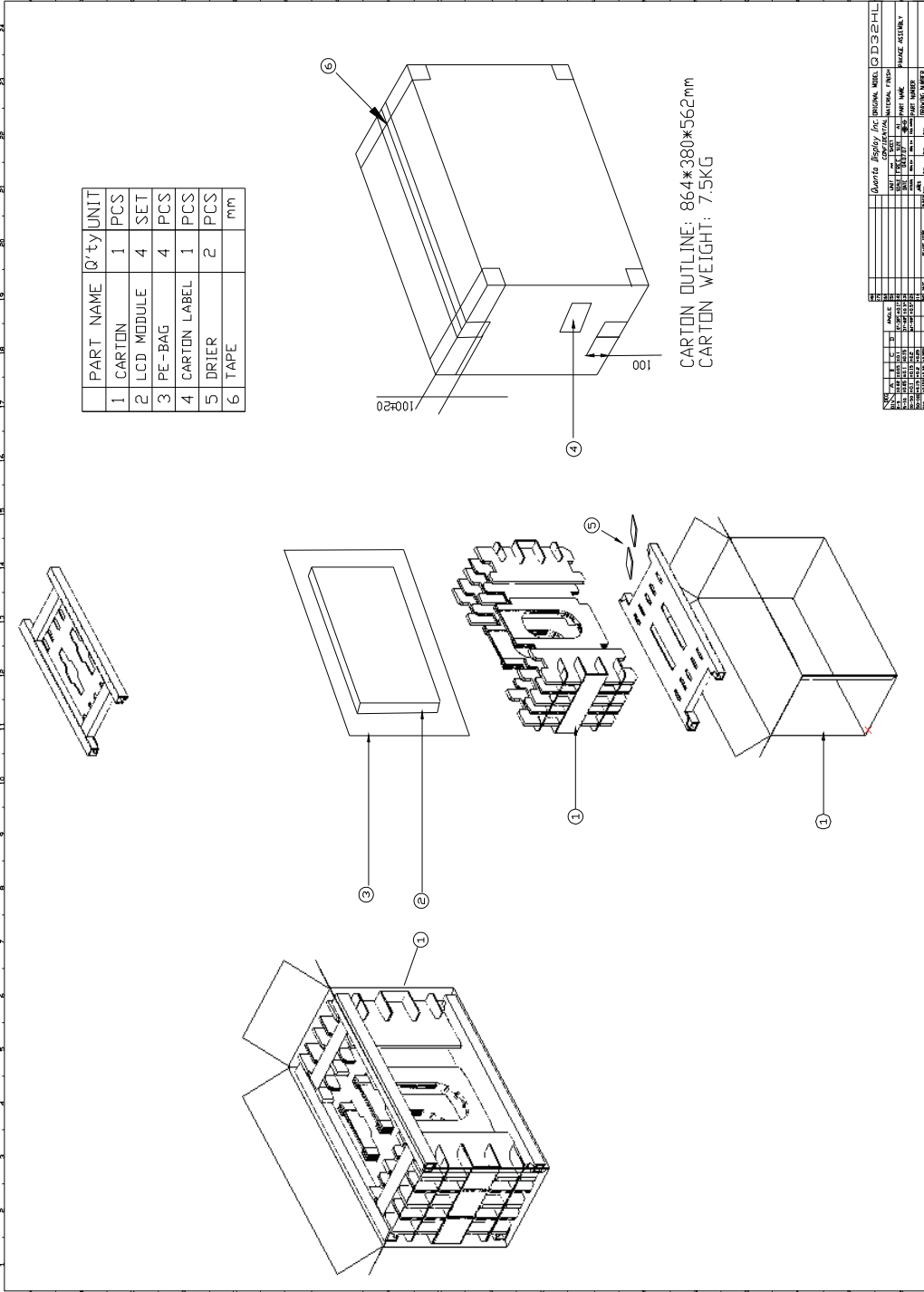
QD32HL	QD32HL
Quanta Display Inc.	Quanta Display Inc.
CONFIDENTIAL	CONFIDENTIAL
MATERIAL FINISH	MATERIAL FINISH
UNIT	mm
SCALE	1:1
DATE	2005.08.15
DESIGNER	DESIGNER
DRAWING NUMBER	DRAWING NUMBER
STOCK AIR	STOCK AIR



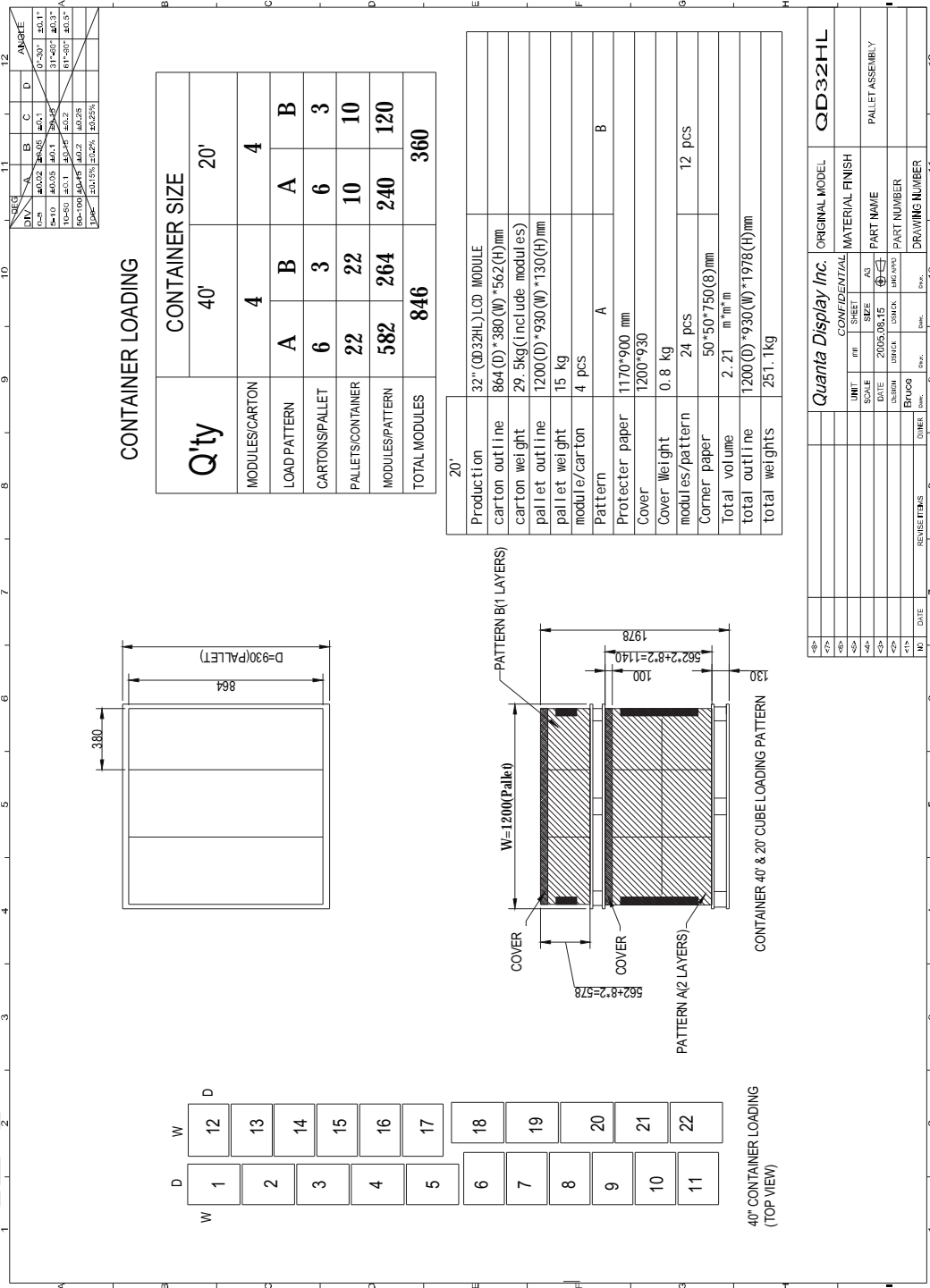
T315XW01 VK (QD32HL06)

29/33

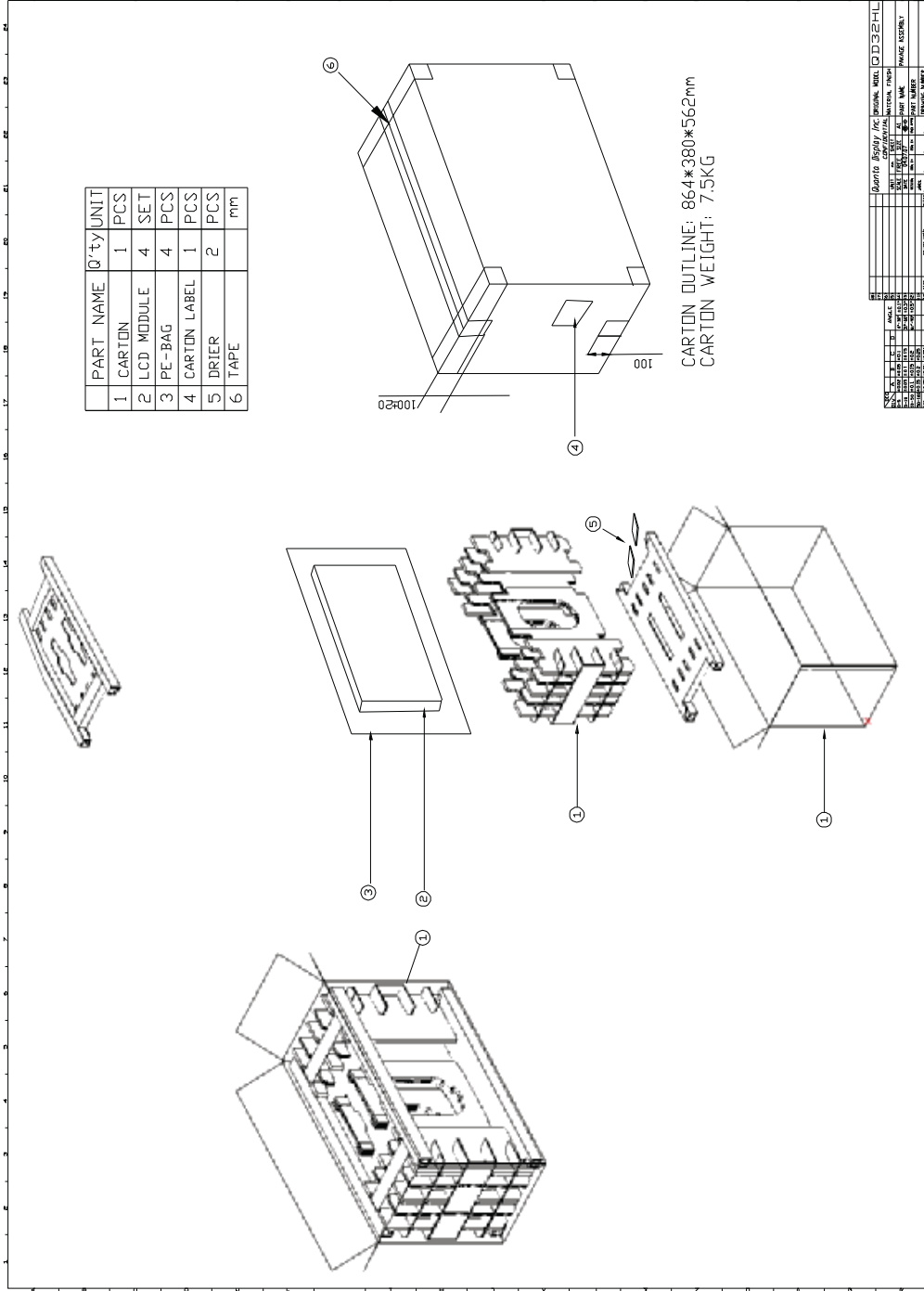
Packing: By air transportation (2 of 2)



15-2 Packing: By ocean transportation (1 of 2)



Packing: By ocean transportation (2 of 2)



16. Reliability test criteria

No.	Test item	Conditions	Judge Criteria
1	High temperature storage test	Ta = 60°C, 1000h	There is no fatal defect for the performance of the LCD module inspected by the inspection method specified in Doc.NO. QD32HL06-02-IIS
2	Low temperature storage test	Ta = -25°C, 1000h	There is no fatal defect for the performance of the LCD module inspected by the inspection method specified in Doc.NO. QD32HL06-02-IIS
3	High temperature & High humidity operation test	Ta = 40°C, 95 %RH, 1000h	There is no fatal defect for the performance of the LCD module inspected by the inspection method specified in Doc.NO. QD32HL06-02-IIS
4	High temperature operation test	Ta = 50°C, 1000h	There is no fatal defect for the performance of the LCD module inspected by the inspection method specified in Doc.NO. QD32HL06-02-IIS
5	Low temperature operation test	Ta = 0°C, 1000h	There is no fatal defect for the performance of the LCD module inspected by the inspection method specified in Doc.NO. QD32HL06-02-IIS
6	Vibration test (non-operating)	Frequency: 10~500Hz, 1.0G, Test period: 3hours (1h for each direction of X, Y, Z)	There is no fatal defect for the performance of the LCD module inspected by the inspection method specified in Doc.NO. QD32HL06-02-IIS Active area must be inside of the bezel opening.
7	Shock test (Non- operating)	Gravity: 50G Pulse width: 11 ms, half sine wave Direction : ±X,±Y,±Z Once for each direction.	There is no fatal defect for the performance of the LCD module inspected by the inspection method specified in Doc.NO. QD32HL06-02-IIS Active area must be inside of the bezel opening.
8	ESD	Contact-op: ±20kv, Contact-nop: ±20kv, Air-op: ±20kv, Air-nop: ±20kv, (Contact area is limited on metal bezel) C: 150PF, R: 330Ω	There is no fatal defect for the performance of the LCD module inspected by the inspection method specified in Doc.NO. QD32HL06-02-IIS



T315XW01 VK (QD32HL06)

33/33

9	Thermal cycle	Ta = -25, 1h ~ 60°C, 1h, 200 cycles	There is no fatal defect for the performance of the LCD module inspected by the inspection method specified in Doc.NO. QD32HL06-02-IIS
10	High temperature operation test 2	Ta =60°C, 200h [Note1] To check linear simi that occur boundary between white and black pattern.	Cannot see any simi through the 10% ND filter at any gray scale at 60 degC.

[Note1] Image sticking pattern shown as following:

