



Model Name: T420HW07 V3

Issue Date : 2010/07/19

() Preliminary Specifications

(*) Final Specifications

Customer Signature	Date	AUO	Date
Approved By		Approval By PM Director Yen Ting Chiu <u>YTC 2010.8.9 for YT</u>	
Note		Reviewed By RD Director Eugene CC Chen <u>Eugene Chen 2010.8.6</u>	
		Reviewed By Project Leader Wilber Yu <u>游家瑞 2010.7.20</u>	
		Prepared By PM Shelby <u>SHZLBY</u>	



Contents

No		
		CONTENTS
		RECORD OF REVISIONS
1		GENERAL DESCRIPTION
2		ABSOLUTE MAXIMUM RATINGS
3		ELECTRICAL SPECIFICATION
	3-1	ELECTRICAL CHARACTERISTICS
	3-2	INTERFACE CONNECTIONS
	3-3	SIGNAL TIMING SPECIFICATION
	3-4	SIGNAL TIMING WAVEFORM
	3-5	COLOR INPUT DATA REFERENCE
	3-6	POWER SEQUENCE
	3-7	BACKLIGHT SPECIFICATION
4		OPTICAL SPECIFICATION
5		MECHANICAL CHARACTERISTICS
6		RELIABILITY TEST ITEMS
7		INTERNATIONAL STANDARD
	7-1	SAFETY
	7-2	EMC
8		PACKING
	8-1	DEFINITION OF LABEL
	8-2	PACKING METHODS
	8-3	PALLET AND SHIPMENT INFORMATION
9		PRECAUTION
	9-1	MOUNTING PRECAUTIONS
	9-2	OPERATING PRECAUTIONS
	9-3	ELECTROSTATIC DISCHARGE CONTROL
	9-4	PRECAUTIONS FOR STRONG LIGHT EXPOSURE
	9-5	STORAGE
	9-6	HANDLING PRECAUTIONS FOR PROTECT FILM

Record of Revision

[illegible]

1. General Description

This specification applies to the 42.0 inch Color TFT-LCD Module T420HW07 V3. This LCD module has a TFT active matrix type liquid crystal panel 1,920x1,080 pixels, and diagonal size of 42.0 inch. This module supports 1,920x1080 mode. Each pixel is divided into Red, Green and Blue sub-pixels or dots which are arranged in vertical stripes. Gray scale or the brightness of the sub-pixel color is determined with a 10-bit gray scale signal for each dot.

The T420HW07 V3 has been designed to apply the 10-bit 4 channel LVDS interface method. It is intended to support displays where high brightness, wide viewing angle, high color saturation, and high color depth are very important.

* General Information

Items	Specification	Unit	Note
Active Screen Size	42.00	inch	
Display Area	930.24(H) x 523.26(V)	mm	
Outline Dimension	973.2(H) x 566.2 (V) x 22.5(D)	mm	D : Front bezel to T-CON cover
Driver Element	a-Si TFT active matrix		
Display Colors	10 bit(8+FRC), 1073.7M	Colors	
Number of Pixels	1,920x1080	Pixel	
Pixel Pitch	0.4845	mm	
Pixel Arrangement	RGB vertical stripe		
Display Operation Mode	Normally Black		
Surface Treatment	Anti-Glare, 3H		Haze=11%

2. Absolute Maximum Ratings

The followings are maximum values which, if exceeded, may cause faulty operation or damage to the unit

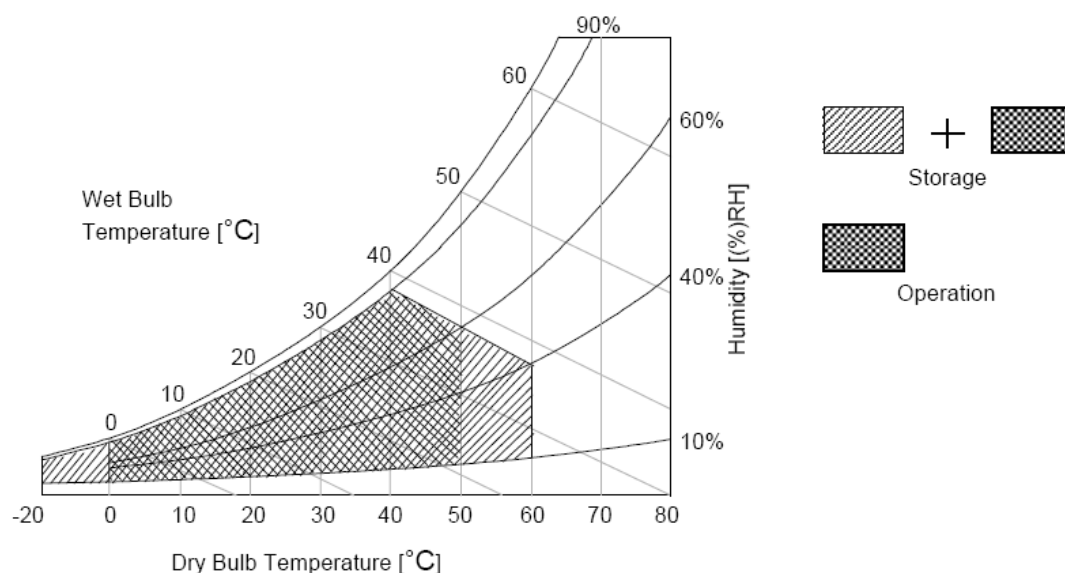
Item	Symbol	Min	Max	Unit	Conditions
Logic/LCD Drive Voltage	Vcc	-0.3	14	[Volt]	Note 1
Input Voltage of Signal	Vin	-0.3	4	[Volt]	Note 1
Operating Temperature	TOP	0	+50	[°C]	Note 2
Operating Humidity	HOP	10	90	[%RH]	Note 2
Storage Temperature	TST	-20	+60	[°C]	Note 2
Storage Humidity	HST	10	90	[%RH]	Note 2
Panel Surface Temperature	PST		65	[°C]	Note 3

Note 1: Duration:50 msec.

Note 2 : Maximum Wet-Bulb should be 39°C and No condensation.

The relative humidity must not exceed 90% non-condensing at temperatures of 40°C or less. At temperatures greater than 40°C, the wet bulb temperature must not exceed 39°C.

Note 3: Surface temperature is measured at 50°C Dry condition



3. Electrical Specification

The T420HW07 V3 requires two power inputs. One is employed to power the LCD electronics and to drive the TFT array and liquid crystal. The second is employed for LED lightbar.

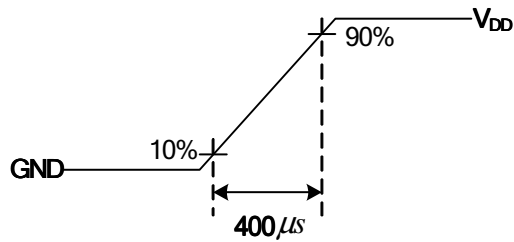
3.1 Electrical Characteristics

Parameter		Symbol	Value			Unit	Note
			Min.	Typ.	Max		
LCD							
Power Supply Input Voltage		V_{DD}	10.8	12	13.2	V_{DC}	1
Power Supply Input Current		I_{DD}	-	1.2	1.92	A	2
Power Consumption		P_C		14.4	23.04	Watt	2
Inrush Current		I_{RUSH}	-	-	4	A	3
LVDS Interface	Input Differential Voltage	$ V_{ID} $	200	400	600	mV_{DC}	4
	Differential Input High Threshold Voltage	V_{TH}	--	--	+100	mV_{DC}	4
	Differential Input Low Threshold Voltage	V_{TL}	-100	--	--	mV_{DC}	4
	Input Common Mode Voltage	V_{ICM}	1.1	1.25	1.4	V_{DC}	4
LVDS Interface	Input Channel Pair Skew Margin	$t_{SKEW (CP)}$	-500	--	+500	ps	5
CMOS Interface	Input High Threshold Voltage	V_{IH} (High)	2.7	--	3.3	V_{DC}	
	Input Low Threshold Voltage	V_{IL} (Low)	0	--	0.6	V_{DC}	
Backlight Power Consumption		P_{BL}		97	106	Watt	
Life Time (MTTF)			30000		--	Hours	7

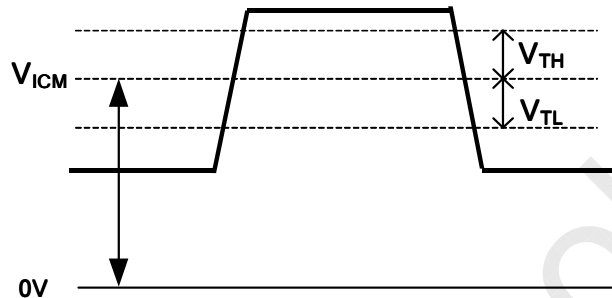
Note :

1. The ripple voltage should be controlled under 10% of V_{CC}
2. Test Condition:
 - (1) $V_{DD} = 12.0V$
 - (2) $F_v =$ Type Timing, 60Hz, 120Hz or Other
 - (3) $F_{CLK} =$ Max freq.
 - (4) Temperature = 25 °C
 - (5) Test Pattern : White Pattern

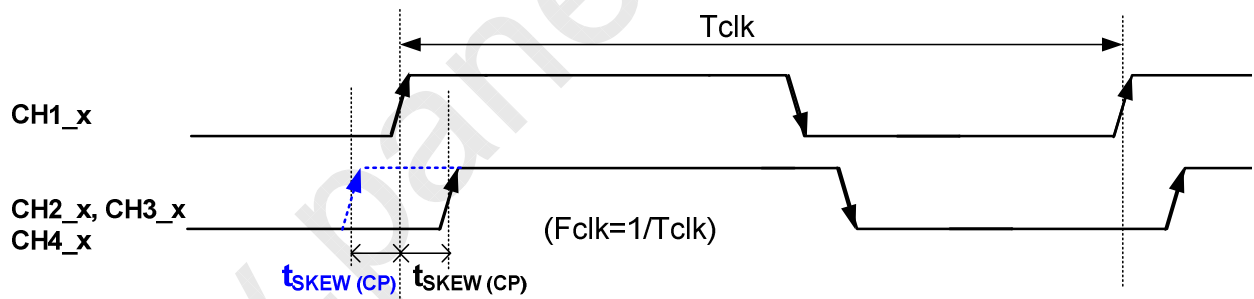
3. Measurement condition : Rising time = 400us



4. $V_{ICM} = 1.25V$



5. Input Channel Pair Skew Margin



6. The relative humidity must not exceed 80% non-condensing at temperatures of 40°C or less. At temperatures greater than 40°C, the wet bulb temperature must not exceed 39°C. When operate at low temperatures, the brightness of LED will drop and the life time of LED will be reduced.
7. The lifetime(MTTF) is defined as the time which luminance of the LED is 50% compared to its original value.

[Operating condition: Continuous operating at $T_a = 25 \pm 2^\circ C$]

3.2 Interface Connections

LCD connector : 187059-51221 (P-TWO, LVDS connector)

PIN	Symbol	Description	PIN	Symbol	Description
1	V _{DD}	Power Supply, +12V DC Regulated	26	CH2_0+	LVDS Channel 2, Signal 0+
2	V _{DD}	Power Supply, +12V DC Regulated	27	CH2_1-	LVDS Channel 2, Signal 1-
3	V _{DD}	Power Supply, +12V DC Regulated	28	CH2_1+	LVDS Channel 2, Signal 1+
4	V _{DD}	Power Supply, +12V DC Regulated	29	CH2_2-	LVDS Channel 2, Signal 2-
5	V _{DD}	Power Supply, +12V DC Regulated	30	CH2_2+	LVDS Channel 2, Signal 2+
6	Reserved	AUO Internal Use Only	31	GND	Ground
7	GND	Ground	32	CH2_CLK-	LVDS Channel 2, Clock -
8	GND	Ground	33	CH2_CLK+	LVDS Channel 2, Clock +
9	GND	Ground	34	GND	Ground
10	CH1_0-	LVDS Channel 1, Signal 0-	35	CH2_3-	LVDS Channel 2, Signal 3-
11	CH1_0+	LVDS Channel 1, Signal 0+	36	CH2_3+	LVDS Channel 2, Signal 3+
12	CH1_1-	LVDS Channel 1, Signal 1-	37	CH2_4-	LVDS Channel 2, Signal 4-(for 10bit input)
13	CH1_1+	LVDS Channel 1, Signal 1+	38	CH2_4+	LVDS Channel 2, Signal 4+(for 10bit input)
14	CH1_2-	LVDS Channel 1, Signal 2-	39	GND	Ground
15	CH1_2+	LVDS Channel 1, Signal 2+	40	SCL	I2C Serial Clock Bus
16	GND	Ground	41	SDA	I2C Serial Data Bus
17	CH1_CLK-	LVDS Channel 1, Clock -	42	LVDS_SEL	LVDS Format Selection Open/High(3.3V) for NS 8bits Low(GND) for JEIDA 10bits
18	CH1_CLK+	LVDS Channel 1, Clock +	43	NC	No connection
19	GND	Ground	44	NC	No connection
20	CH1_3-	LVDS Channel 1, Signal 3-	45	NC	No connection
21	CH1_3+	LVDS Channel 1, Signal 3+	46	Reserved	AUO Internal Use Only
22	CH1_4-	LVDS Channel 1, Signal 4-(for 10bit input)	47	MEMC_SELECT_0	MEMC_SELECT_0 High(3.3V) for 1 ; Low/Open(GND) for 0
23	CH1_4+	LVDS Channel 1, Signal 4+(for 10bit input)	48	Reserved	AUO Internal Use Only
24	GND	Ground	49	MEMC_SELECT_1	MEMC_SELECT_1, MEMC_SEL[1:0] 00: MEMC off 01: Weak level performance 10: Middle level performance 11: Strong level performance Default : 10(2'd2) Open/High(3.3V) for 1 ; Low(GND) for 0



25	CH2_0-	LVDS Channel 2, Signal 0-	50	Reserved	AUO Internal Use Only
			51	FR_SELECT	Input Frame Rate Selection. High(3.3V) for 1 : 50Hz Low/Open(GND) for 0 : 60Hz

MEMC Function Description

Setting By Hardware

Pin name	Content	Note	Default
FR_SEL	Input Frame Rate Selection 0: 60Hz 1: 50Hz		1'b0
MEMC_SEL *1	MEMC level selection 00: MEMC OFF 01: Weak level performance 10: Middle level performance 11: Strong level performance	MEME OFF: 1 frame latency (~16.7ms) MEMC ON (Weak & Middle & Strong): 10 frames latency (~170ms) for film FLC, MBR + video MBR	2'd2
LVDS_SEL	LVDS Format Selection 0: JEIDA Mode 10bits 1: NS Mode 8bits		1'b1
I2C_SDA *1	External I2C from customer's comment		
I2C_SCL *1	External I2C from customer's comment		

Note 1.

The next figure shows the I2C format of customer's single-byte command. Ex. Address : 0x65.

START	0XE4 ^{(*)1}	ACK ^{(*)2}	Address	ACK	Data	ACK	STOP
-------	----------------------	---------------------	---------	-----	------	-----	------

The next figure shows the I2C format of customer's multi-byte command. Ex. Address : 0x23.

START	0XE4	ACK	Add ress	ACK	Data (Byte 0)	ACK	Data (Byte 1)	ACK	Data (Byte 2)	ACK	Data (Byte 3)	ACK	STOP
-------	------	-----	-------------	-----	---------------------	-----	---------------------	-----	---------------------	-----	---------------------	-----	------

Note (1): Slave address of MEMC chip is 0x72 plus the least significant bit indicating a write (0xE4).

Note (2): Shaded items are issued by the slave (MEMC chip).

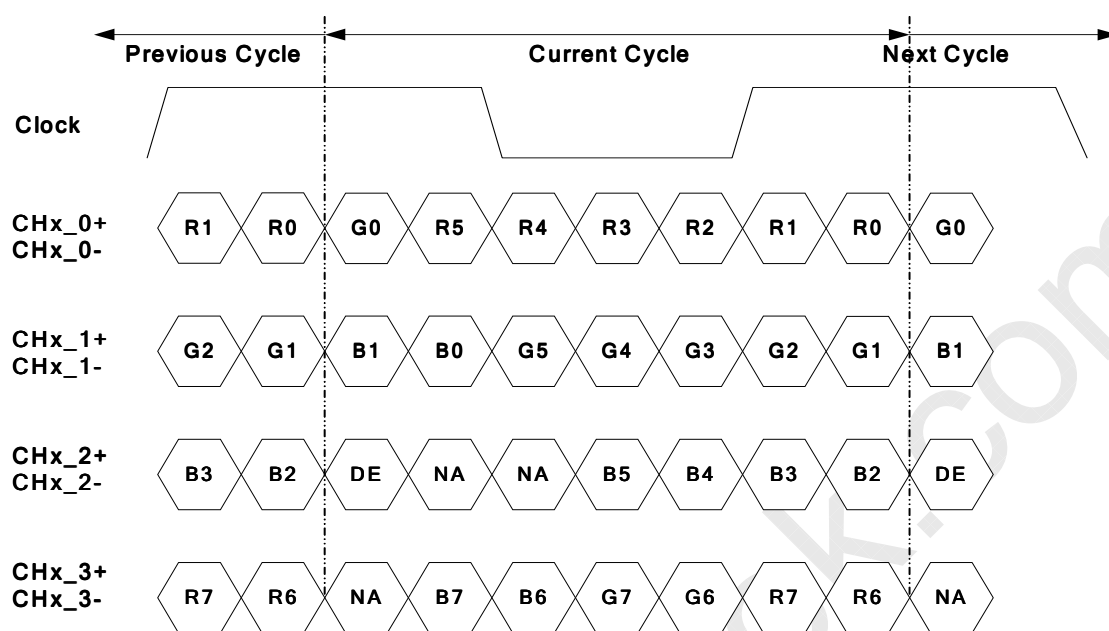
Setting By External I2C

Address (Hex)	Byte	Bit	Description	Note	Default
1B	0	7:0	Output black data 0x00: unblank (normal display) 0x01: blank (output black data)	Initial state is unblanked.	0x00
79	0	7:0	MEMC ON/OFF Selection 0x00: MEMC ON 0x02: MEMC OFF 0x04: TRUE MOVIE (5:5 pull down for 120Hz)	MEMC ON: 10 frames latency (~170ms) for film FLC, MBR + video MBR MEMC OFF: 1 frame latency (~16.7ms) TRUE MOVIE: latency (~80ms) for film a frame repeat.	0x00
65	0:1	15:0	Control the demo option 0x0000: Demo OFF. 0x0004: Demo ON.	Demo OFF : Normal display; Demo ON : MEMC enable at Right side, and MEMC disable at Left side.	0x0000
59	0	7:0	OSD ON/OFF control 0x00: OSD OFF 0x04: OSD ON	OSD On/Off Control	0x00
23	0:1	15:0	OSD width define (Unit: pixel ; range 0~1920)	1. OSD Protection Size Define (Width, height, x, y) 2. Usable in OSD ON status. (The data of address 0x59 must be 0x04.)	0x0000
	2:3	15:0	OSD height define (Unit: pixel ; range 0~1080)		0x0000
	4:5	15:0	The amount of H pixels that the left upper corner of the OSD is from the left top corner of the output window (Unit: pixel ; range 0~1920)		0x0000
	6:7	15:0	The amount of V pixels that the left upper corner of the OSD is from the left top corner of the output window (Unit: pixel ; range 0~1080)		0x0000
25	0	6:0	Thickness of the OSD left and right border (Unit: pixel ; range 0~127)	1. OSD border width and color decision 2. Usable in OSD ON status. (The data of address 0x59 must be 0x04.)	0x00
	1	6:0	Thickness of the OSD top and bottom border (Unit: pixel ; range 0~127)		0x00
	2:4	7:0	Red component of the OSD border color		0x00
		7:0	Green component of the OSD border color		0x00
		7:0	Blue component of the OSD border color (Unit: 8 bit level ; range 0~255)		0x00
6E	0	7:0	Different MEMC level selection 0x00: Weak 1 MEMC level (GPIO setting) 0x01: Middle MEMC level (GPIO setting) 0x02: Strong MEMC level (GPIO setting) 0x03: Weak 2 MEMC level	Usable in MEMC ON status. (The data of address 0x79 must be 0x00.)	0x01



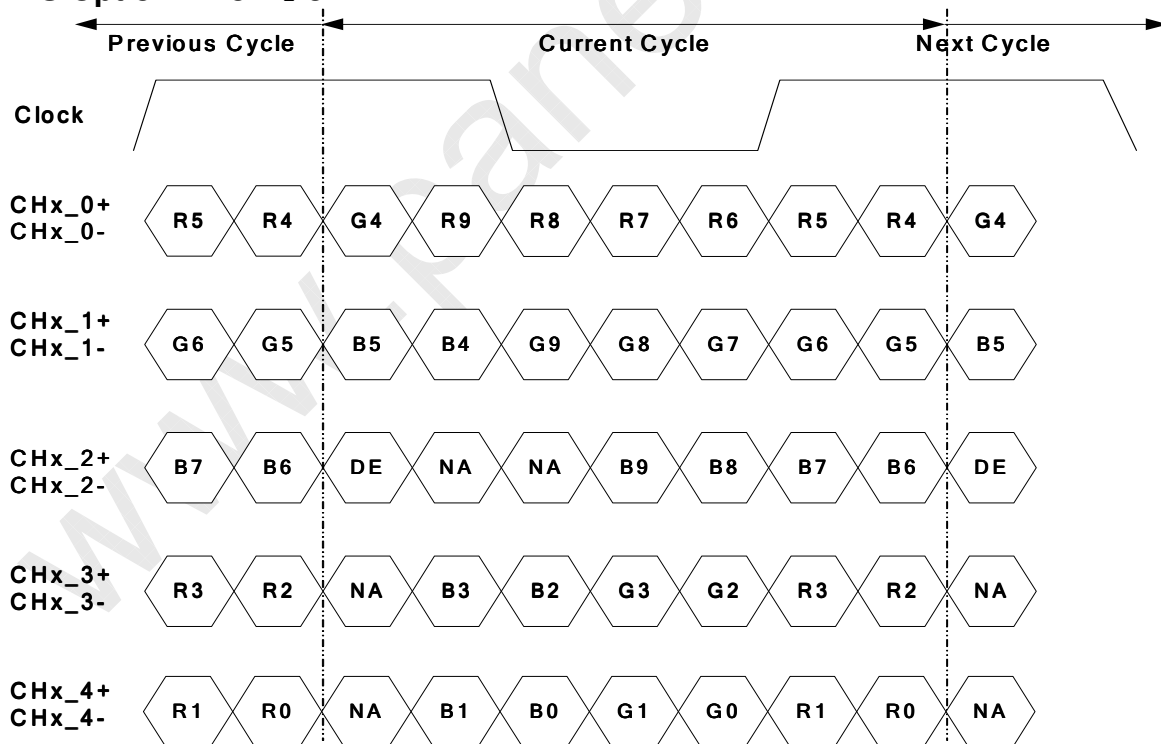
			0x04: Weak 3 MEMC level		
10	0	7:0	0x00: 60Hz 0x01: 50Hz	Select input format	0x00

LVDS Option = High/Open → NS



Note: x = 1, 2, 3, 4...

LVDS Option = Low → JEIDA



Note: x = 1, 2, 3, 4...

3.3 Signal Timing Specification

This is the signal timing required at the input of the user connector. All of the interface signal timing should be satisfied with the following specifications for its proper operation.

Vertical Frequency Range (60Hz)

Signal	Item	Symbol	Min.	Typ.	Max	Unit
Vertical Section	Period	Tv	1100	1125	1200	Th
	Active	Tdisp (v)	1080			Th
	Blanking	Tblk (v)	20	45	120	Th
	Front porch	Tfp (v)	1	4	110	Th
	Back porch	Tbp (v)	1	36	110	Th
	V_sync	TVsync_width	2	5	110	Th
	Polarity	POL (v)	+			
Horizontal Section	Period	Th	1050	1100	1150	Tclk
	Active	Tdisp (h)	960			Tclk
	Blanking	Tblk (h)	90	140	190	Tclk
	Front porch	Tfp (h)	5	44	180	Tclk
	Back porch	Tbp (h)	5	74	180	Tclk
	H_sync	THsync_width	5	22	180	Tclk
	Polarity	POL (h)	+			
Clock	Frequency	Fclk=1/Tclk	70.875	74.25	76	MHz
Vertical Frequency	Frequency	Fv	59.5	60	60.5	Hz
Horizontal Frequency	Frequency	Fh	66	67.5	72	KHz

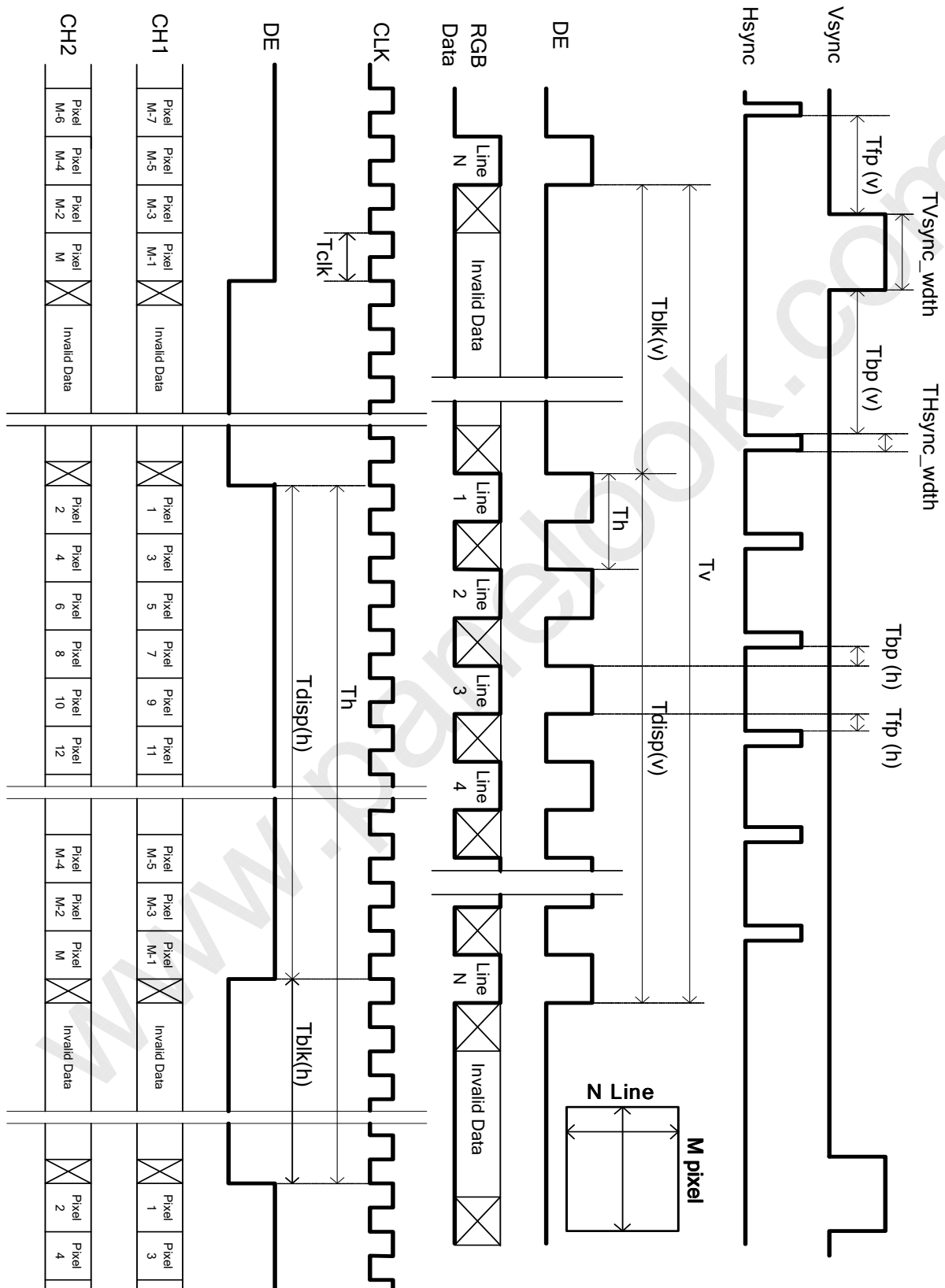
Vertical Frequency Range (50Hz)

Signal	Item	Symbol	Min.	Typ.	Max	Unit
Vertical Section	Period	Tv	1100	1125	1200	Th
	Active	Tdisp (v)	1080			Th
	Blanking	Tblk (v)	20	45	120	Th
	Front porch	Tfp (v)	1	4	110	Th
	Back porch	Tbp (v)	1	36	110	Th
	V_sync	TVsync_width	2	5	110	Th
	Polarity	POL (v)	+			
Horizontal Section	Period	Th	1050	1100	1150	Tclk
	Active	Tdisp (h)	960			Tclk
	Blanking	Tblk (h)	90	140	190	Tclk
	Front porch	Tfp (h)	5	44	180	Tclk
	Back porch	Tbp (h)	5	74	180	Tclk
	H_sync	THsync_width	5	22	180	Tclk
	Polarity	POL (h)	+			
Clock	Frequency	Fclk=1/Tclk	59.5	61.88	65	MHz
Vertical Frequency	Frequency	Fv	49.5	50	50.5	Hz
Horizontal Frequency	Frequency	Fh	56.65	56.25	61.93	KHz

Note 1: Tblk (v) = Tfp(v) + TVsync_width + Tbp(v)

Tblk (h) = Tfp(h) + THsync_width + Tbp(h)

3.4 Signal Timing Waveforms



3.5 Color Input Data Reference

The brightness of each primary color (red, green and blue) is based on the 10 bit gray scale data input for the color; the higher the binary input, the brighter the color. The table below provides a reference for color versus data input.

COLOR DATA REFERENCE

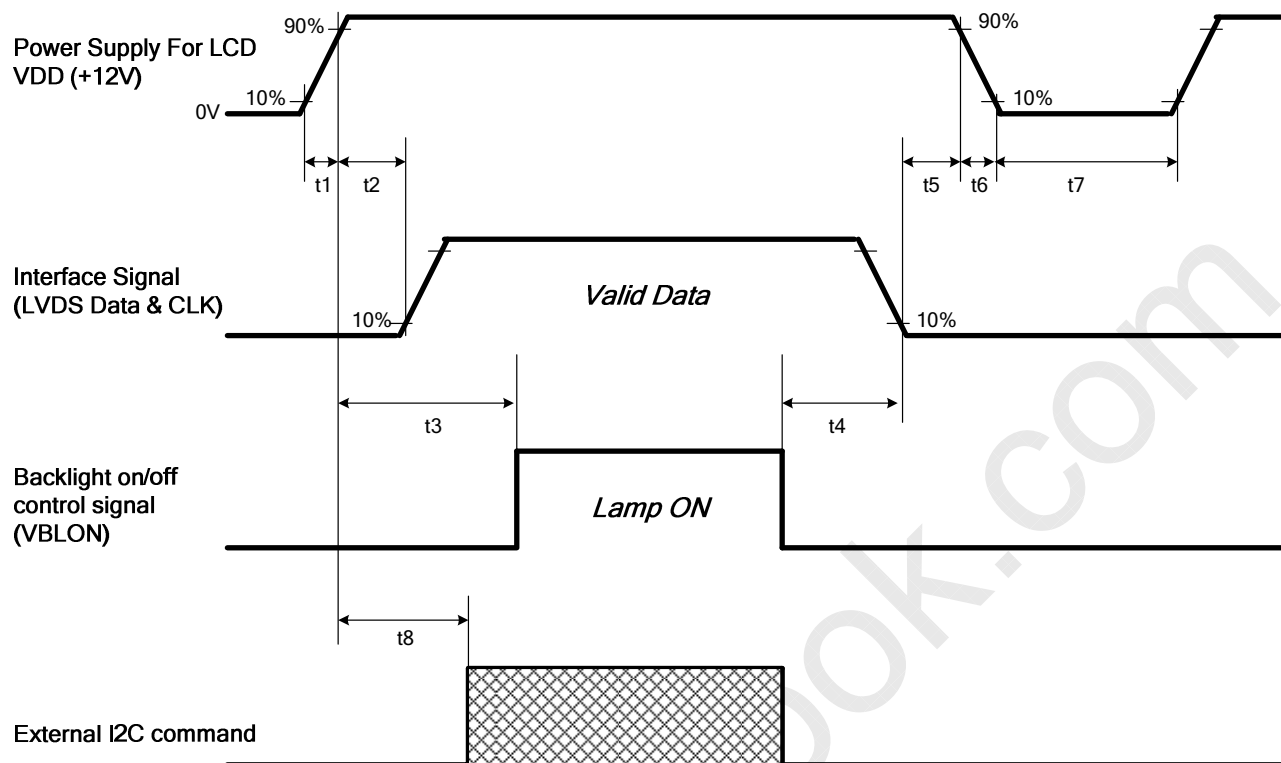
Color		Input Color Data																															
		RED										GREEN										BLUE											
		MSB					LSB					MSB					LSB					MSB						LSB					
		R9	R8	R7	R6	R5	R4	R3	R2	R1	R0	G9	G8	G7	G6	G5	G4	G3	G2	G1	G0	B9	B8	B7	B6	B5	B4	B3	B2	B1	B0		
Basic Color	Black	0	0	0	0	0	0	0	0	0	0	0	0	0	0	0	0	0	0	0	0	0	0	0	0	0	0	0	0	0	0		
	Red(1023)	1	1	1	1	1	1	1	1	1	1	0	0	0	0	0	0	0	0	0	0	0	0	0	0	0	0	0	0	0	0		
	Green(1023)	0	0	0	0	0	0	0	0	0	0	1	1	1	1	1	1	1	1	1	1	0	0	0	0	0	0	0	0	0	0		
	Blue(1023)	0	0	0	0	0	0	0	0	0	0	0	0	0	0	0	0	0	0	0	0	1	1	1	1	1	1	1	1	1	1		
	Cyan	0	0	0	0	0	0	0	0	0	0	1	1	1	1	1	1	1	1	1	1	1	1	1	1	1	1	1	1	1	1		
	Magenta	1	1	1	1	1	1	1	1	1	1	0	0	0	0	0	0	0	0	0	0	1	1	1	1	1	1	1	1	1	1		
	Yellow	1	1	1	1	1	1	1	1	1	1	1	1	1	1	1	1	1	1	1	1	0	0	0	0	0	0	0	0	0	0		
	White	1	1	1	1	1	1	1	1	1	1	1	1	1	1	1	1	1	1	1	1	1	1	1	1	1	1	1	1	1	1		
R	RED(000)	0	0	0	0	0	0	0	0	0	0	0	0	0	0	0	0	0	0	0	0	0	0	0	0	0	0	0	0	0	0		
	RED(001)	0	0	0	0	0	0	0	0	0	1	0	0	0	0	0	0	0	0	0	0	0	0	0	0	0	0	0	0	0	0		

	RED(1022)	1	1	1	1	1	1	1	1	1	0	0	0	0	0	0	0	0	0	0	0	0	0	0	0	0	0	0	0	0	0		
	RED(1023)	1	1	1	1	1	1	1	1	1	1	0	0	0	0	0	0	0	0	0	0	0	0	0	0	0	0	0	0	0	0		
G	GREEN(000)	0	0	0	0	0	0	0	0	0	0	0	0	0	0	0	0	0	0	0	0	0	0	0	0	0	0	0	0	0	0		
	GREEN(001)	0	0	0	0	0	0	0	0	0	0	0	0	0	0	0	0	0	0	0	1	0	0	0	0	0	0	0	0	0	0		

	GREEN(1022)	0	0	0	0	0	0	0	0	0	0	1	1	1	1	1	1	1	1	1	0	0	0	0	0	0	0	0	0	0	0		
	GREEN(1023)	0	0	0	0	0	0	0	0	0	0	1	1	1	1	1	1	1	1	1	1	0	0	0	0	0	0	0	0	0	0		
B	BLUE(000)	0	0	0	0	0	0	0	0	0	0	0	0	0	0	0	0	0	0	0	0	0	0	0	0	0	0	0	0	0	0		
	BLUE(001)	0	0	0	0	0	0	0	0	0	0	0	0	0	0	0	0	0	0	0	0	0	0	0	0	0	0	0	0	0	1		

	BLUE(1022)	0	0	0	0	0	0	0	0	0	0	0	0	0	0	0	0	0	0	0	0	1	1	1	1	1	1	1	1	1	0		
	BLUE(1023)	0	0	0	0	0	0	0	0	0	0	0	0	0	0	0	0	0	0	0	0	1	1	1	1	1	1	1	1	1	1		

3.6 Power Sequence for LCD



Parameter	Values			Unit
	Min.	Type.	Max.	
t1	0.4	---	30	ms
t2	0.1	---	2000	ms
t3	3400	---	---	ms
t4	0 ^{*1}	---	---	ms
t5	0	---	---	ms
t6	---	---	--- ^{*2}	ms
t7	500	---	---	ms
t8	2500	---	---	ms

Note:

(1) T4=0 : concern for residual pattern before BLU turn off.

(2) T6 : voltage of VDD must decay smoothly after power-off. (customer system decide this value)

Apply the lamp voltage within the LCD operating range. When the backlight turns on before the LCD operation or the LCD turns off before the backlight turns off, the display may momentarily become abnormal.

Caution: The above on/off sequence should be applied to avoid abnormal function in the display. In case of handling, make sure to turn off the power when you plug the cable into the input connector or pull the cable out of the connector.

3.7 Backlight Specification

3.7.1 Electrical specification

	Item	Symbol		Condition	Spec			Unit	Note
					Min	Typ	Max		
1	Input Voltage	VDDB		-	21.6	24	26.4	VDC	-
2	Input Current	I_{DDB}		VDDB=24V		4.04	4.4	ADC	1
3	Input Power	P_{DDB}		VDDB=24V		97	106	W	1
4	Inrush Current	I_{RUSH}		VDDB=24V			8	ADC	2
5	On/Off control voltage	V_{BLON}	ON	VDDB=24V	2	-	5.5	VDC	-
			OFF		0	-	0.8		-
6	On/Off control current	I_{BLON}		VDDB=24V	-	-	1.5	mA	-
7	Dimming Control Voltage	V_{DIM}	MAX	VDDB=24V	3.0	-	3.3	VDC	-
			MIN		-	0	-	VDC	-
8	Dimming Control Current	I_{DIM}		VDDB=24V	-	-	2	mADC	-
9	Internal Dimming Ratio	DIM_R		VDDB=24V	20	-	100	%	3
10	External PWM Control Voltage	V_{EPWM}	MAX	VDDB=24V	2	-	3.3	VDC	-
			MIN	VDDB=24V	0	-	0.8		-
11	External PWM Control Current	I_{EPWM}		VDDB=24V	-	-	2	mADC	-
12	External PWM Duty ratio	D_{EPWM}		VDDB=24V	10	-	100	%	3
13	External PWM Frequency	F_{EPWM}		VDDB=24V	140	180	240	Hz	-

Note 1 : Dimming ratio= 100% (MAX) ($T_a=25\pm5^{\circ}\text{C}$, Turn on for 45minutes)

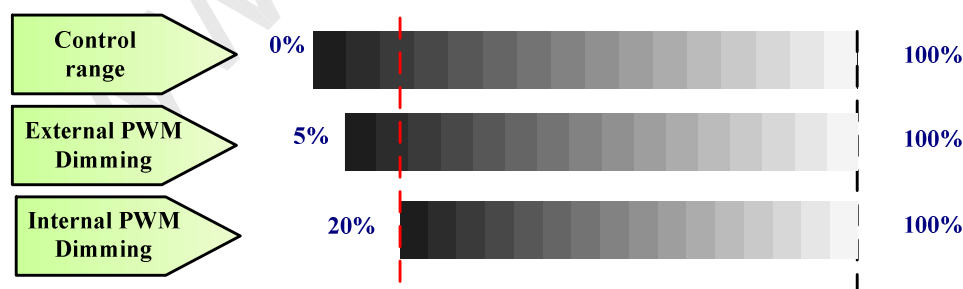
Note 2: Measurement condition Rising time = 20ms (VDDB : 10%~90%);

Note 3: Less than 10% dimming control is functional well and no backlight shutdown happened

3.7.2 Input Pin Assignment

LED driver board connector : Cvilux CI0114M1HR0-NH

Pin	Symbol	Description
1	VDDDB	Operating Voltage Supply, +24V DC regulated
2	VDDDB	Operating Voltage Supply, +24V DC regulated
3	VDDDB	Operating Voltage Supply, +24V DC regulated
4	VDDDB	Operating Voltage Supply, +24V DC regulated
5	VDDDB	Operating Voltage Supply, +24V DC regulated
6	BLGND	Ground and Current Return
7	BLGND	Ground and Current Return
8	BLGND	Ground and Current Return
9	BLGND	Ground and Current Return
10	BLGND	Ground and Current Return
11	DET	BLU status detection: Normal : 0~0.8V ; Abnormal : Open collector
12	VBLOn	BLU On-Off control: High/Open (3.3V) : BL On ; Low (-0.3~0.8V/GND) : BL Off
13	VDIM(**)	Internal PWM (0~3.3V for 20~100% Duty, open for 100%) < NC ; at External PWM mode>
14	PDIM(*)	External PWM (5%~100% Duty, open for 100%) < NC ; at Internal PWM mode>

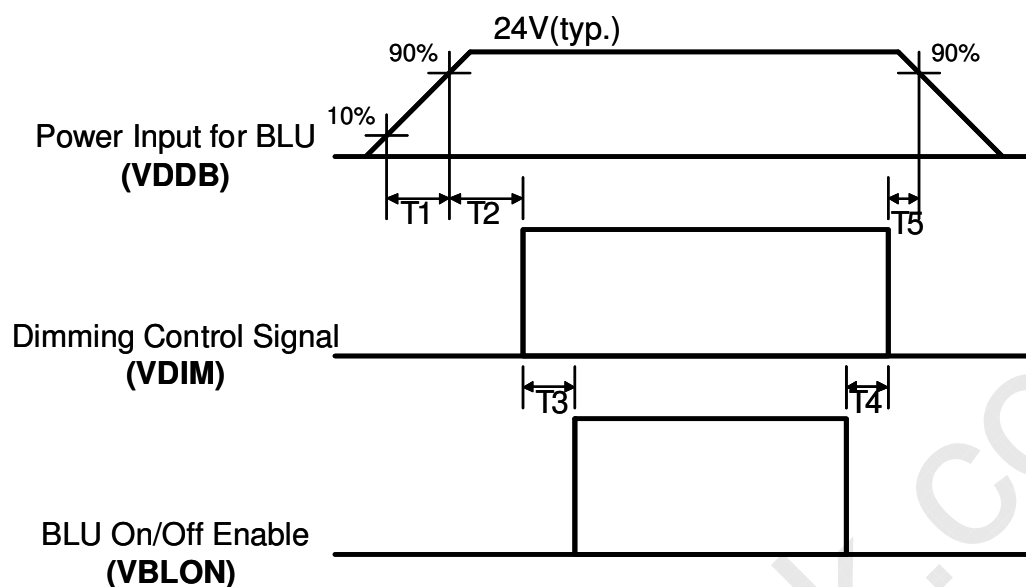


PWM Dimming : include Internal and External PWM Dimming

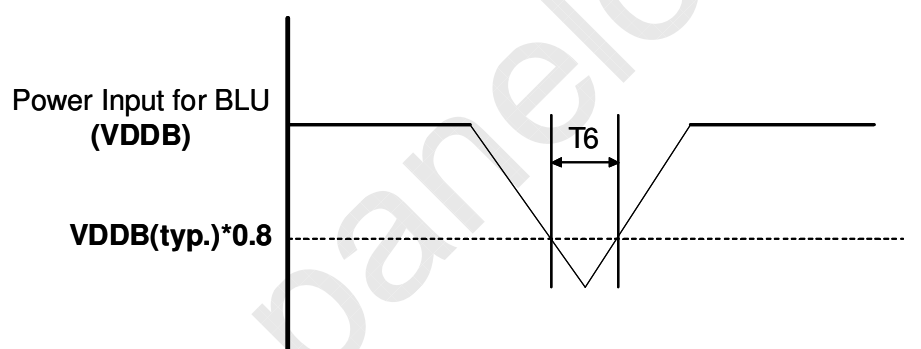
(Note*) IF External PWM function includes 10% dimming ratio. Judge condition as below:

- (1) Backlight module must be lighted ON normally.
- (2) All protection function must work normally.
- (3) Uniformity and flicker could NOT be guaranteed

3.7.3 Power Sequence for Inverter



Dip condition for Inverter

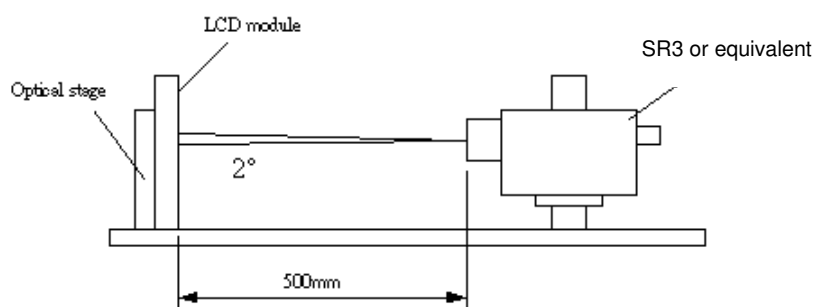


Parameter	Value			Units
	Min	Typ	Max	
T1	20	-	-	ms
T2	500	-	-	ms
T3	250	-	-	ms
T4	0	-	-	ms
T5	1	-	-	ms
T6	-	-	10	ms

4. Optical Specification

Optical characteristics are determined after the unit has been 'ON' and stable for approximately 45 minutes in a dark environment at 25°C. The values specified are at an approximate distance 50cm from the LCD surface at a viewing angle of φ and θ equal to 0°.

Fig.1 presents additional information concerning the measurement equipment and method.



Parameter		Symbol	Values			Unit	Notes
			Min.	Typ.	Max		
Contrast Ratio		CR	3200	4000	--		1
Surface Luminance (White)		L_{WH}	360	450	--	cd/m ²	2
Luminance Variation		$\delta_{WHITE(9P)}$	--	--	1.33		3
Response Time (G to G)		T_Y	--	6.5	--	Ms	4
Color Gamut		NTSC		72		%	
Color Coordinates							
	Red	R_X	Typ.-0.03	0.64	Typ.+0.03		
		R_Y		0.33			
	Green	G_X		0.32			
		G_Y		0.62			
	Blue	B_X		0.15			
		B_Y		0.045			
	White	W_X		0.28			
		W_Y		0.29			
Viewing Angle							5
	x axis, right($\varphi=0^\circ$)	θ_r	--	89	--	degree	
	x axis, left($\varphi=180^\circ$)	θ_l	--	89	--	degree	
	y axis, up($\varphi=90^\circ$)	θ_u	--	89	--	degree	
	y axis, down ($\varphi=270^\circ$)	θ_d	--	89	--	degree	

Note:

1. Contrast Ratio (CR) is defined mathematically as:

$$\text{Contrast Ratio} = \frac{\text{Surface Luminance of } L_{\text{on5}}}{\text{Surface Luminance of } L_{\text{off5}}}$$

2. Surface luminance is luminance value at point 5 across the LCD surface 50cm from the surface with all pixels displaying white. From more information see FIG 2.

3. The variation in surface luminance, δ_{WHITE} is defined (center of Screen) as:

$$\delta_{\text{WHITE(9P)}} = \text{Maximum}(L_{\text{on1}}, L_{\text{on2}}, \dots, L_{\text{on9}}) / \text{Minimum}(L_{\text{on1}}, L_{\text{on2}}, \dots, L_{\text{on9}})$$

4. Response time T_{γ} is the average time required for display transition by switching the input signal for five luminance ratio (0%,25%,50%,75%,100% brightness matrix) and is based on $F_v=60\text{Hz}$ to optimize. For more information see FIG3.

Measured Response Time		Target				
		0%	25%	50%	75%	100%
Start	0%		0% to 25%	0% to 50%	0% to 75%	0% to 100%
	25%	25% to 0%		25% to 50%	25% to 75%	25% to 100%
	50%	50% to 0%	50% to 25%		50% to 75%	50% to 100%
	75%	75% to 0%	75% to 25%	75% to 50%		75% to 100%
	100%	100% to 0%	100% to 25%	100% to 50%	100% to 75%	

5. Viewing angle is the angle at which the contrast ratio is greater than 10. The angles are determined for the horizontal or x axis and the vertical or y axis with respect to the z axis which is normal to the LCD surface. For more information see FIG4.

FIG. 2 Luminance

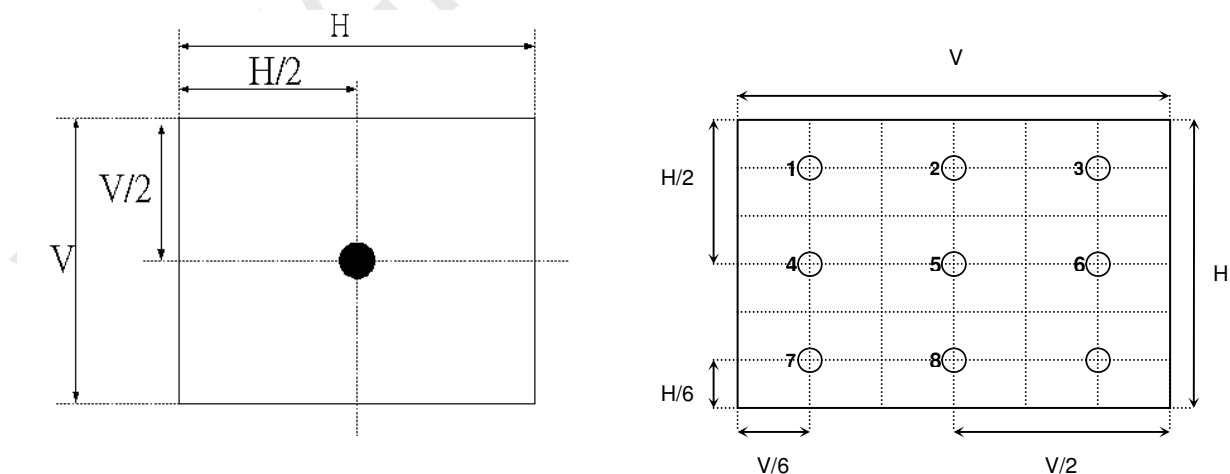
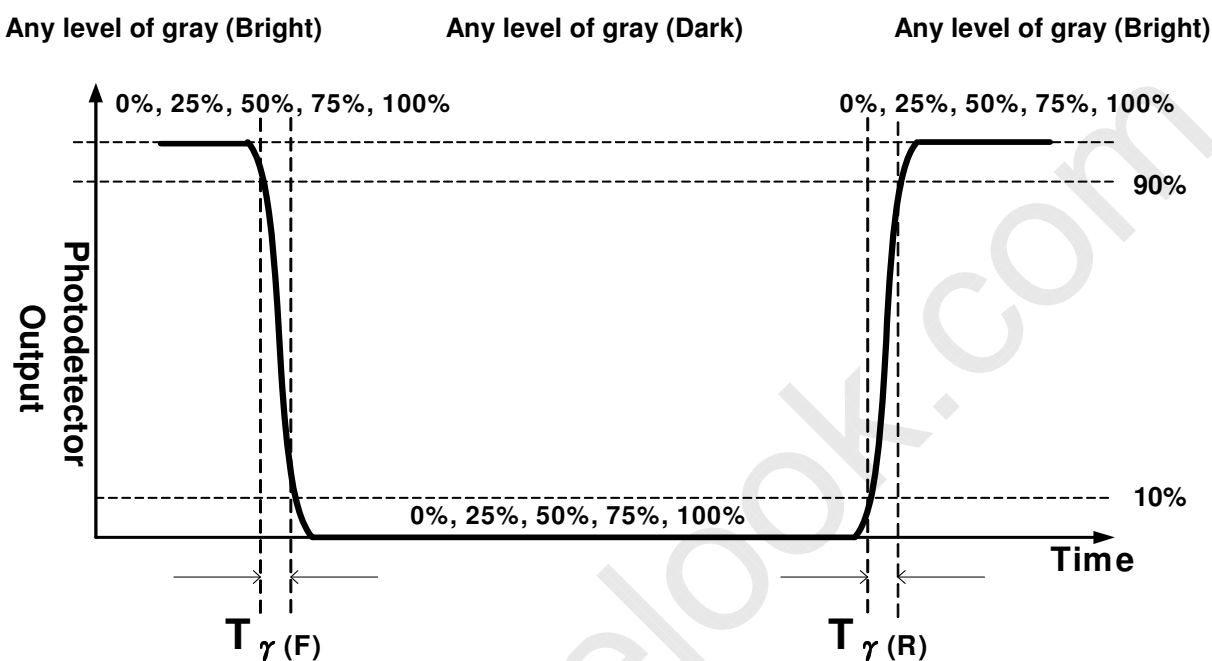
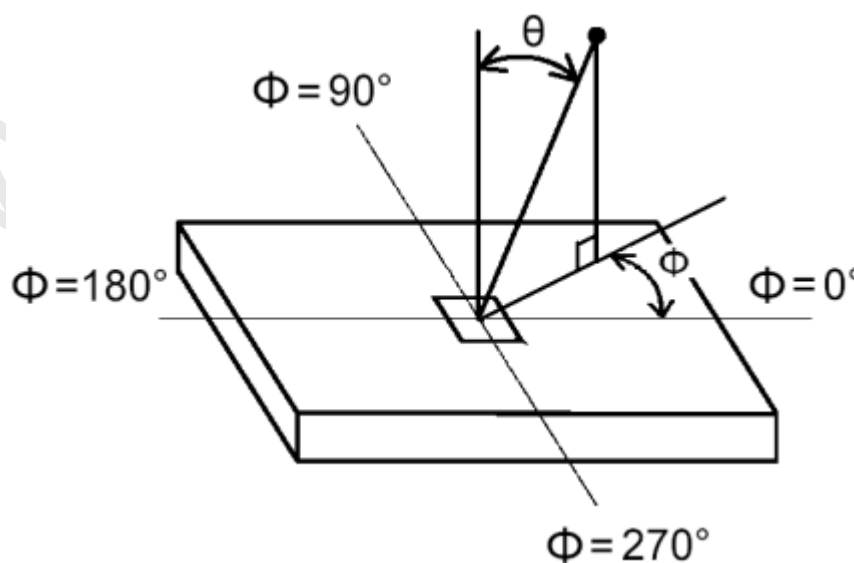


FIG.3 Response Time

The response time is defined as the following figure and shall be measured by switching the input signal for “any level of gray(bright)” and “any level of gray(dark)”.

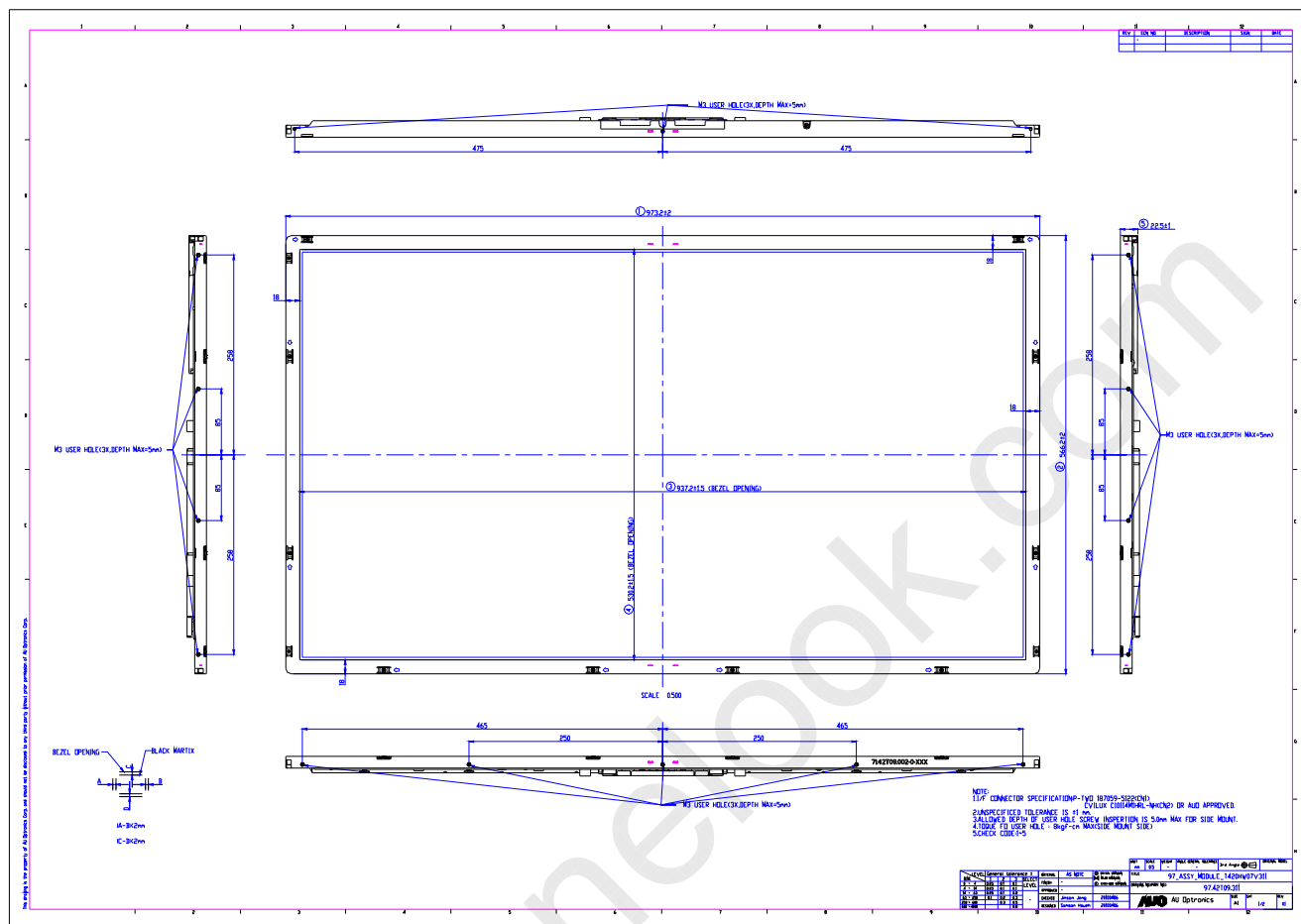

FIG.4 Viewing Angle


5. Mechanical Characteristics

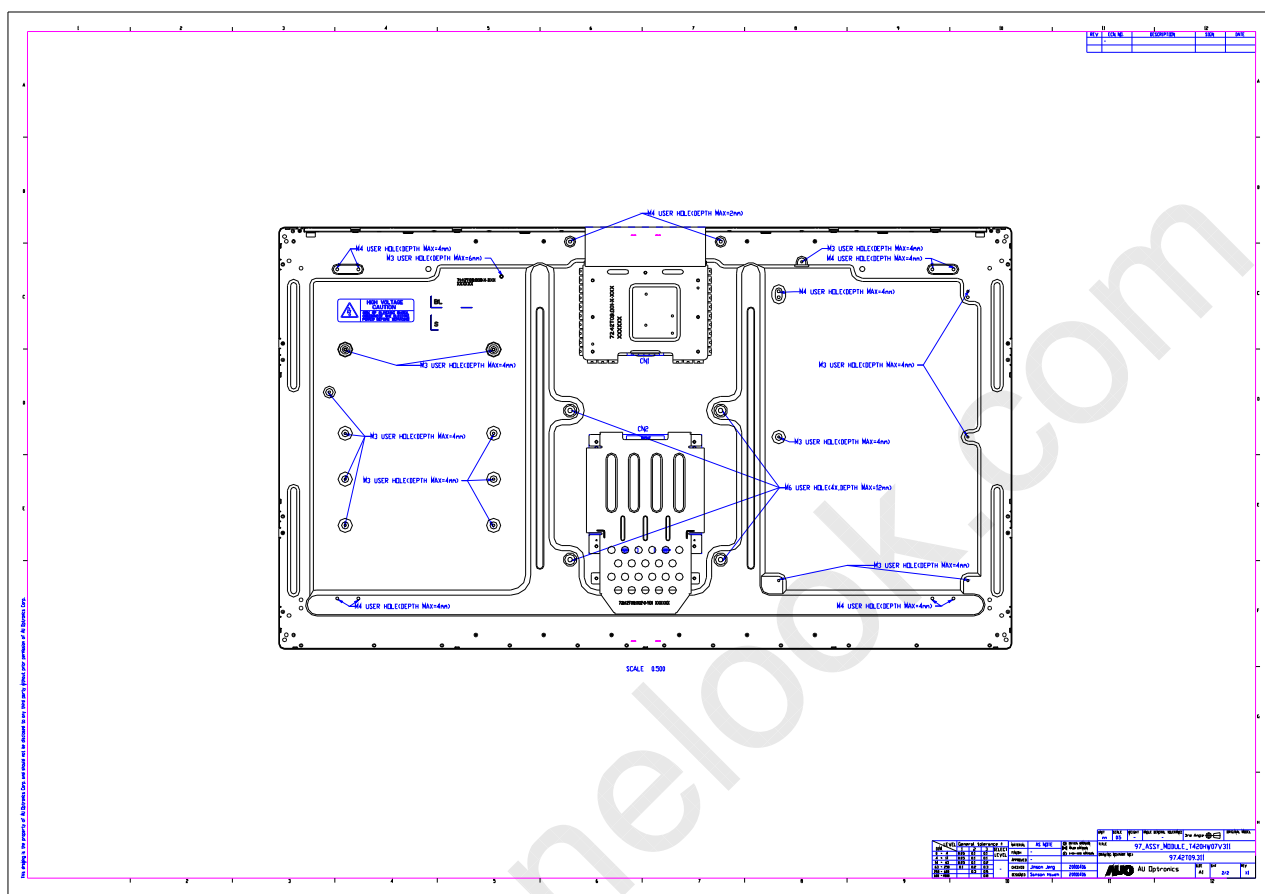
The contents provide general mechanical characteristics for the model T420HW07 V3. In addition the figures in the next page are detailed mechanical drawing of the LCD.

Outline Dimension	Horizontal	973.2 mm
	Vertical	566.2 mm
	Depth	22.5 mm (Front bezel to T-CON cover)
Bezel Opening	Horizontal	937.2 mm
	Vertical	530.2 mm
Active Display Area	Horizontal	930.24 mm
	Vertical	523.26 mm
Weight	8700 g (Typ.)	
Surface Treatment	Anti-Glare, 3H	

Front View



Back View





6. Reliability Test Items

	Test Item	Q'ty	Condition
1	High temperature storage test	3	60℃, 300hrs
2	Low temperature storage test	3	-20℃, 300hrs
3	High temperature operation test	3	50℃, 300hrs
4	Low temperature operation test	3	-5℃, 300hrs
5	Vibration test (non-operation)	3	Wave form: random Vibration level: 1.0G RMS Bandwidth: 10-200Hz, Duration: X, Y, Z 10min One time each direction
6	Shock test (non-operation)	3	Shock level: 50G Waveform: half sine wave, 11ms Direction: ±X, ±Y, ±Z, One time each direction
7	Vibration test (With carton)	1 (PKG)	Random wave (1.0G RMS, 10-200Hz) 10mins/ Per each X,Y,Z axes
8	Drop test (With carton)	1 (PKG)	Height: 25.4 cm(ASTMD4169-I) 6 surfaces(ASTMD 5276)

7. International Standard

7.1 Safety

- (1) UL 60950-1, UL 60065; Standard for Safety of Information Technology Equipment Including electrical Business Equipment.
- (2) IEC 60950-1 : 2001, IEC 60065:2001 ; Standard for Safety of International Electrotechnical Commission
- (3) EN 60950 : 2001+A11, EN 60065:2002+A1:2006; European Committee for Electrotechnical Standardization (CENELEC), EUROPEAN STANDARD for Safety of Information Technology Equipment Including Electrical Business Equipment.

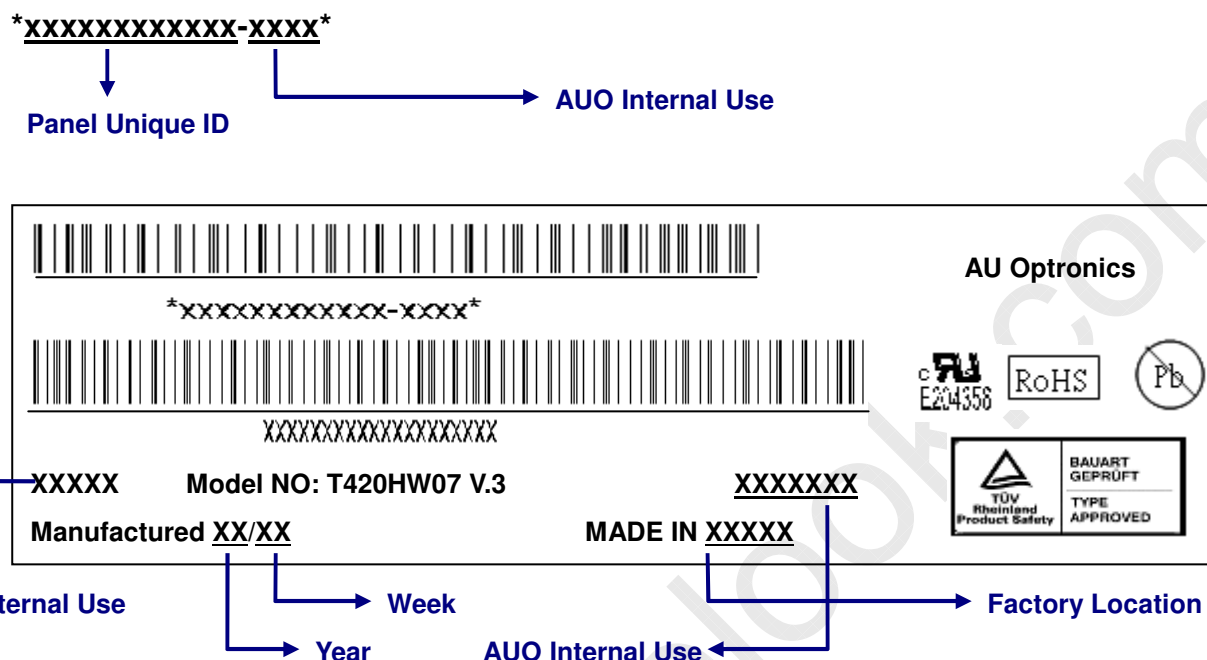
7.2 EMC

- (1) ANSI C63.4 "Methods of Measurement of Radio-Noise Emissions from Low-Voltage Electrical and Electrical Equipment in the Range of 9kHz to 40GHz. "American National standards Institute(ANSI), 1992
- (2) C.I.S.P.R "Limits and Methods of Measurement of Radio Interface Characteristics of Information Technology Equipment." International Special committee on Radio Interference.
- (3) EN 55022 "Limits and Methods of Measurement of Radio Interface Characteristics of Information Technology Equipment." European Committee for Electrotechnical Standardization. (CENELEC), 1998

8. Packing

8-1 DEFINITION OF LABEL:

A. Panel Label:



Green mark description

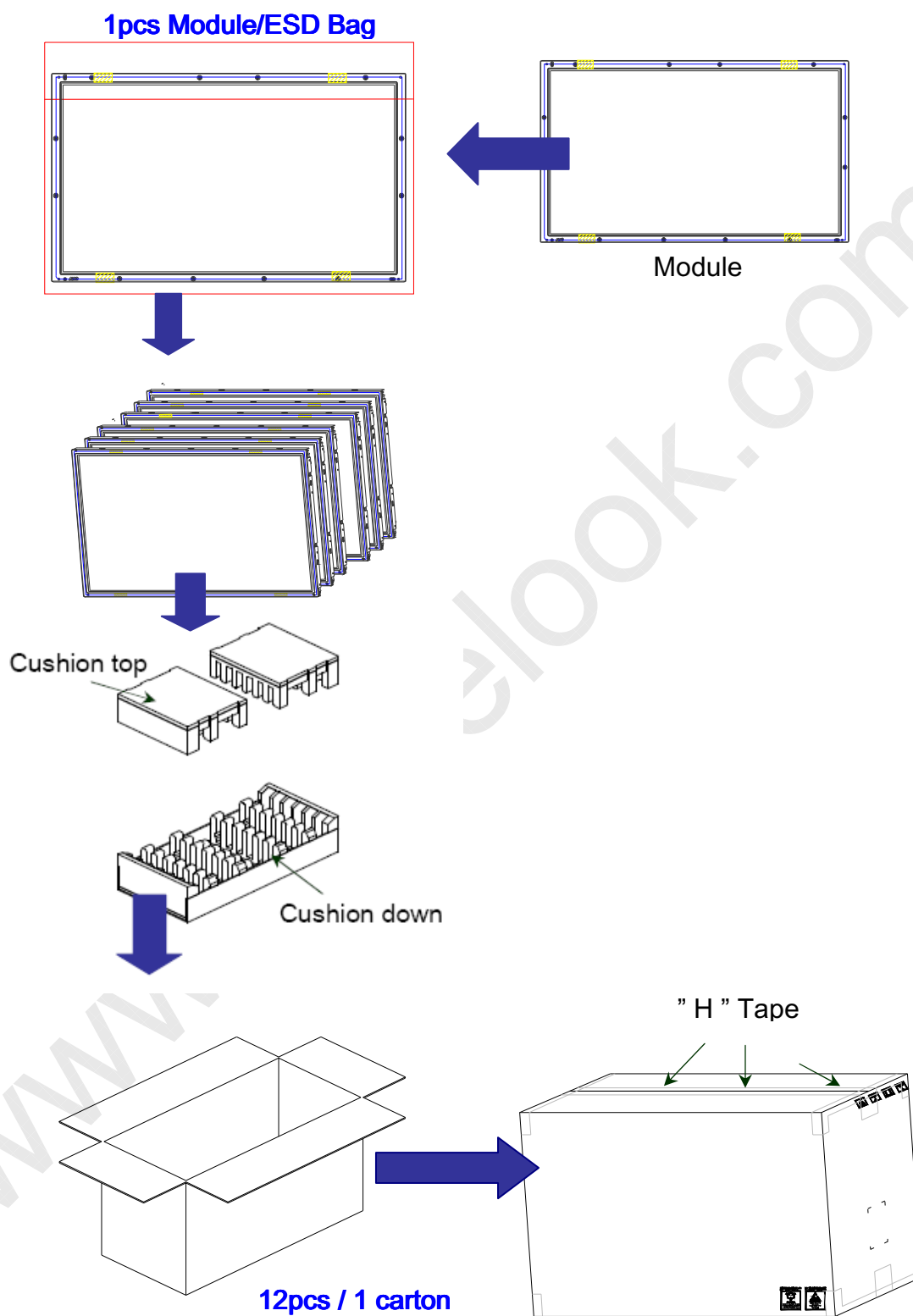
(1) For Pb Free Product, AUO will add for identification.

(2) For RoHs compatible products, AUO will add for identification.

Note: The green Mark will be present only when the green documents have been ready by AUO internal green team. (definition of green design follows the AUO green design checklist.)

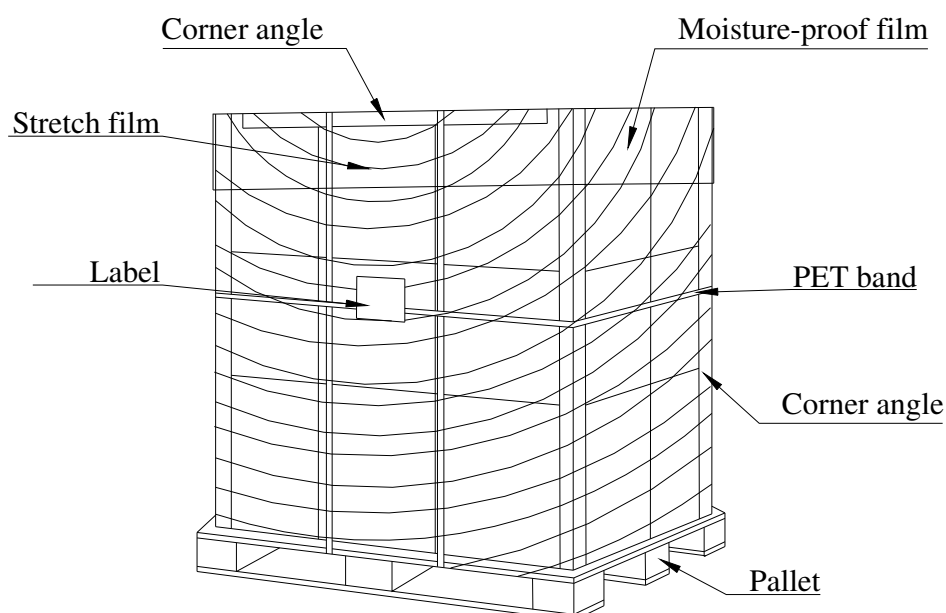
B. Carton Label:

AU Optronics	QTY : 12		
MODEL NO: T420HW07 V3			
PART NO: 97.42T09.3XX			
CUSTOMER NO:			
CARTON NO:			
Made in XXXXXX	*XXXXX-XXXXXXXXXX*		

**8-2 PACKING METHODS:**

8-3 Pallet and Shipment Information

	Item	Specification			Packing Remark
		Qty.	Dimension	Weight (kg)	
1	Packing BOX	12pcs/box	1060(L)*560(W)*660(H)	100	
2	Pallet	1	1150(L)*1070(W)*132(H)	16	
3	Boxes per Pallet	2 boxes/pallet			
4	Panels per Pallet	24pcs/pallet			
	Pallet after packing	24	1150(L)*1070(W)*798(H)	116	



8. PRECAUTIONS

Please pay attention to the followings when you use this TFT LCD module.

9-1 MOUNTING PRECAUTIONS

- (1) You must mount a module using holes arranged in four corners or four sides.
- (2) You should consider the mounting structure so that uneven force (ex. twisted stress) is not applied to module. And the case on which a module is mounted should have sufficient strength so that external force is not transmitted directly to the module.
- (3) Please attach the surface transparent protective plate to the surface in order to protect the polarizer. Transparent protective plate should have sufficient strength in order to resist external force.
- (4) You should adopt radiation structure to satisfy the temperature specification.
- (5) Acetic acid type and chlorine type materials for the cover case are not desirable because the former generates corrosive gas of attacking the polarizer at high temperature and the latter cause circuit broken by electro-chemical reaction.
- (6) Do not touch, push or rub the exposed polarizer with glass, tweezers or anything harder than HB pencil lead. And please do not rub with dust clothes with chemical treatment. Do not touch the surface of polarizer for bare hand or greasy cloth. (Some cosmetics are detrimental to the polarizer.)
- (7) When the surface becomes dusty, please wipe gently with absorbent cotton or other soft materials like chamois soaks with petroleum benzene. Normal-hexane is recommended for cleaning the adhesives used to attach front/ rear polarizer. Do not use acetone, toluene and alcohol because they cause chemical damage to the polarizer.
- (8) Wipe off saliva or water drops as soon as possible. Their long time contact with polarizer causes deformations and color fading.
- (9) Do not open the case because inside circuits do not have sufficient strength.

9-2 OPERATING PRECAUTIONS

- (1) The device listed in the product specification sheets was designed and manufactured for TV application
- (2) The spike noise causes the mis-operation of circuits. It should be lower than following voltage:
 $V = \pm 200\text{mV}$ (Over and under shoot voltage)
- (3) Response time depends on the temperature. (In lower temperature, it becomes longer..)
- (4) Brightness of CCFL depends on the temperature. (In lower temperature, it becomes lower.) And in lower temperature, response time (required time that brightness is stable after turned on) becomes longer.
- (5) Be careful for condensation at sudden temperature change. Condensation makes damage to polarizer or electrical contacted parts. And after fading condensation, smear or spot will occur.
- (6) When fixed patterns are displayed for a long time, remnant image is likely to occur.
- (7) Module has high frequency circuits. Sufficient suppression to the electromagnetic interference shall

be done by system manufacturers. Grounding and shielding methods may be important to minimize the interface.

9-3 ELECTROSTATIC DISCHARGE CONTROL

Since a module is composed of electronic circuits, it is not strong to electrostatic discharge. Make certain that treatment persons are connected to ground through wristband etc. And don't touch interface pin directly.

9-4 PRECAUTIONS FOR STRONG LIGHT EXPOSURE

Strong light exposure causes degradation of polarizer and color filter.

9-5 STORAGE

When storing modules as spares for a long time, the following precautions are necessary.

- (1) Store them in a dark place. Do not expose the module to sunlight or fluorescent light. Keep the temperature between 5°C and 35°C at normal humidity.
- (2) The polarizer surface should not come in contact with any other object. It is recommended that they be stored in the container in which they were shipped.

9-6 HANDLING PRECAUTIONS FOR PROTECTION FILM

- (1) The protection film is attached to the bezel with a small masking tape. When the protection film is peeled off, static electricity is generated between the film and polarizer. This should be peeled off slowly and carefully by people who are electrically grounded and with well ion-blown equipment or in such a condition, etc.
- (2) When the module with protection film attached is stored for a long time, sometimes there remains a very small amount of glue still on the bezel after the protection film is peeled off.
- (3) You can remove the glue easily. When the glue remains on the bezel or its vestige is recognized, please wipe them off with absorbent cotton waste or other soft material like chamois soaked with normal-hexane.