



# TA0104A

## STEREO 500W (4Ω) CLASS-T DIGITAL AUDIO AMPLIFIER DRIVER USING DIGITAL POWER PROCESSING (DPP™) TECHNOLOGY

Technical Information Revision 3.1 – June 2000

### GENERAL DESCRIPTION

The TA0104A is a 500W continuous average (4Ω), two channel Amplifier Driver Module which uses Tripath’s proprietary Digital Power Processing (DPP™) technology. Class-T amplifiers offer both the audio fidelity of Class-AB and the power efficiency of Class-D amplifiers.

### APPLICATIONS

- Audio/Video
- Amplifiers/Receivers
- Pro-audio Amplifiers
- Automobile Power Amplifiers
- Subwoofer Amplifiers

### BENEFITS

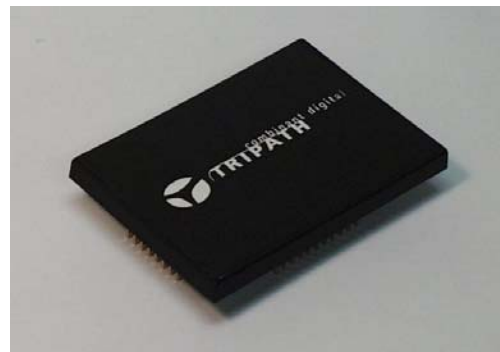
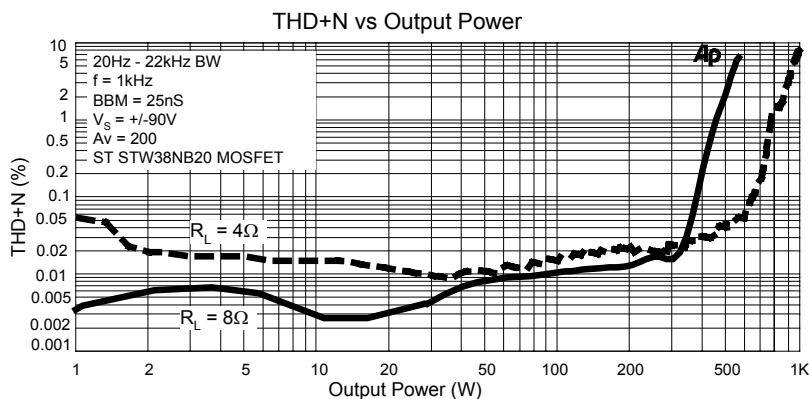
- Reduced system cost with smaller/less expensive power supply and heat sink
- Signal fidelity equal to high quality Class-AB amplifiers
- High dynamic range compatible with digital media such as CD and DVD

### Features

- Class-T architecture
- Proprietary Digital Power Processing technology
- Supports wide range of output power levels

- “Audiophile” Sound Quality
    - 0.02% THD+N @ 300W, 8Ω
    - 0.02% IHF-IM @ 100W, 8Ω
    - 350W @ 8Ω, 0.1% THD+N, Vs = ±90V
    - 500W @ 4Ω, 0.1% THD+N, Vs = ±90V
  - High Power
    - 450W @ 8Ω, 1% THD+N, Vs = ±90V
    - 750W @ 4Ω, 1% THD+N, Vs = ±90V
  - High Efficiency
    - 90% @ 400W @ 8Ω, Vs = ±75V
    - 85% @ 600W @ 4Ω, Vs = ±75V
  - Dynamic Range = 106 dB
  - Requires only N-Channel MOSFET output transistors
  - High power supply rejection ratio
  - Mute input
  - Outputs short-circuit protected
  - Over- and under-voltage protection
  - Bridgeable, single-ended outputs
  - 38-pin quad package
- Supports 100kHz BW of Super Audio CD and DVD-Audio (Refer to Application Note for specifics)

### TYPICAL PERFORMANCE AT +90V



### Absolute Maximum Ratings

SYMBOL	PARAMETER	Value	UNITS
V <sub>S</sub>	Supply Voltage (V <sub>SPOS</sub> & V <sub>SNeg</sub> )	+/-100	V
V <sub>5</sub>	Positive 5 V Bias Supply	6	V
V <sub>N12</sub>	Reference Voltage: Nominal +12V referenced to V <sub>SNeg</sub>	18	V
T <sub>STORE</sub>	Storage Temperature Range	-40 to 150	°C
T <sub>A</sub>	Operating Free-air Temperature Range	-20 to +80	°C

Notes: Absolute Maximum Ratings indicate limits beyond which damage to the device may occur. Damage will occur to the device if V<sub>N12</sub> is not supplied or falls below the recommended operating voltage when V<sub>S</sub> is within its recommended operating range.

### Operating Conditions

SYMBOL	PARAMETER	MIN.	TYP.	MAX.	UNITS
V <sub>S</sub>	Supply Voltage (V <sub>SPOS</sub> & V <sub>SNeg</sub> )	+/- 55	+/- 75	+/- 92	V
V <sub>5</sub>	Positive 5 V Bias Supply	4.5	5	5.5	V
V <sub>N12</sub>	Reference Voltage: Nominal +12V referenced to V <sub>SNeg</sub>	10.8	12	13.2	V

Note: Recommended Operating Conditions indicate conditions for which the device is functional. See Electrical Characteristics for guaranteed specific performance limits.

### Electrical Characteristics

T<sub>A</sub> = 25°C. See Notes 1 & 2 for Operating Conditions and Test/Application Circuit Setup.

SYMBOL	PARAMETER	MIN.	TYP.	MAX.	UNITS
I <sub>q</sub>	Quiescent Current (no load, BBM0=BBM1=0)	+67V -67V +5V VN12	50 50 45 170		mA mA mA mA
I <sub>S</sub>	Source Current @ P <sub>OUT</sub> = 250W, R <sub>L</sub> = 4Ω @ 10% THD+N	V <sub>SPOS</sub> = +67V V <sub>SNeg</sub> = -67V	4.2 4.2		A A
I <sub>5</sub>	Source Current for 5V Bias Supply @ P <sub>OUT</sub> = 250W, R <sub>L</sub> = 4Ω		50		mA
I <sub>VN12</sub>	Source Current for VN12 Supply @ P <sub>OUT</sub> = 250W, R <sub>L</sub> = 4Ω		80		mA
V <sub>u</sub>	Under Voltage (V <sub>SPOS</sub> & V <sub>SNeg</sub> )			+/-55	V
V <sub>o</sub>	Over Voltage (V <sub>SPOS</sub> & V <sub>SNeg</sub> )	+/-92			V
V <sub>IH</sub>	High-level Input Voltage (MUTE)	3.5			V
V <sub>IL</sub>	Low-level Input Voltage (MUTE)			1	V
I <sub>DDMUTE</sub>	Mute Supply Current (no load, BBM0=BBM1=0)	+67V -67V +5V VN12	0 0 15 0		mA mA mA mA
V <sub>OH</sub>	High-level Output Voltage (HMUTE & OVERLOADB)	3.5			V
V <sub>OL</sub>	Low-level Output Voltage (HMUTE & OVERLOADB)			1	V
V <sub>TOC</sub>	Over Current Sense Voltage Threshold	0.67	0.75	0.82	V
A <sub>v</sub>	Gain Ratio V <sub>OUT</sub> /V <sub>IN</sub> , R <sub>IN</sub> = 0Ω		160		V/V
V <sub>offset</sub>	Offset Voltage, no load, MUTE = Logic low		600		mV

Minimum and maximum limits are guaranteed but may not be 100% tested.

### Performance Characteristics – Single Ended, Vs = $\pm 90V$

Unless otherwise specified, f = 1kHz, Measurement Bandwidth = 22kHz. T<sub>A</sub> = 25°C.  
See Notes 1 & 2 for Operating Conditions and Test/Application Circuit Setup.

SYMBOL	PARAMETER	CONDITIONS	MIN.	TYP.	MAX.	UNITS
P <sub>OUT</sub>	Output Power (Continuous Average/Channel)	THD+N = 0.1%, R <sub>L</sub> = 8Ω		350		W
		R <sub>L</sub> = 4Ω		500		W
		THD+N = 1%, R <sub>L</sub> = 8Ω		450		W
		R <sub>L</sub> = 4Ω		750		W
THD + N	Total Harmonic Distortion Plus Noise	P <sub>OUT</sub> = 300W/Channel, R <sub>L</sub> = 8Ω		0.02		%
IHF-IM	IHF Intermodulation Distortion	19kHz, 20kHz, 1:1 (IHF), R <sub>L</sub> = 8Ω P <sub>OUT</sub> = 100W/Channel		0.02		%
SNR	Signal-to-Noise Ratio	A Weighted, P <sub>OUT</sub> = 350W/Ch, R <sub>L</sub> = 8Ω		100.5		dB
CS	Channel Separation	0dB <sub>r</sub> = 100W, R <sub>L</sub> = 8Ω		85		dB
PSRR	Power Supply Rejection Ratio	Input Referenced, 30kHz Bandwidth		65		dB
e <sub>NOUT</sub>	Output Noise Voltage	A Weighted, no signal, input shorted, DC offset nulled to zero		500		μV

### Performance Characteristics – Single Ended, Vs = $\pm 75V$

Unless otherwise specified, f = 1kHz, Measurement Bandwidth = 22kHz. T<sub>A</sub> = 25°C.  
See Notes 1 & 2 for Operating Conditions and Test/Application Circuit Setup.

SYMBOL	PARAMETER	CONDITIONS	MIN.	TYP.	MAX.	UNITS
P <sub>OUT</sub>	Output Power (Continuous Average/Channel)	THD+N = 0.1%, R <sub>L</sub> = 8Ω		200		W
		R <sub>L</sub> = 4Ω		425		W
		THD+N = 1%, R <sub>L</sub> = 8Ω		300		W
		R <sub>L</sub> = 4Ω		500		W
THD + N	Total Harmonic Distortion Plus Noise	P <sub>OUT</sub> = 300W/Channel, R <sub>L</sub> = 4Ω		0.02		%
IHF-IM	IHF Intermodulation Distortion	19kHz, 20kHz, 1:1 (IHF), R <sub>L</sub> = 8Ω P <sub>OUT</sub> = 100W/Channel		0.02		%
SNR	Signal-to-Noise Ratio	A Weighted, P <sub>OUT</sub> = 200W/Ch, R <sub>L</sub> = 8Ω		98		dB
CS	Channel Separation	0dB <sub>r</sub> = 100W, R <sub>L</sub> = 8Ω, f = 1kHz		85		dB
PSRR	Power Supply Rejection Ratio	Input Referenced, 30kHz Bandwidth		65		dB
η	Power Efficiency	P <sub>OUT</sub> = 400W/Channel, R <sub>L</sub> = 8Ω		90		%
e <sub>NOUT</sub>	Output Noise Voltage	A Weighted, no signal, input shorted, DC offset nulled to zero		500		μV

Minimum and maximum limits are guaranteed but may not be 100% tested.

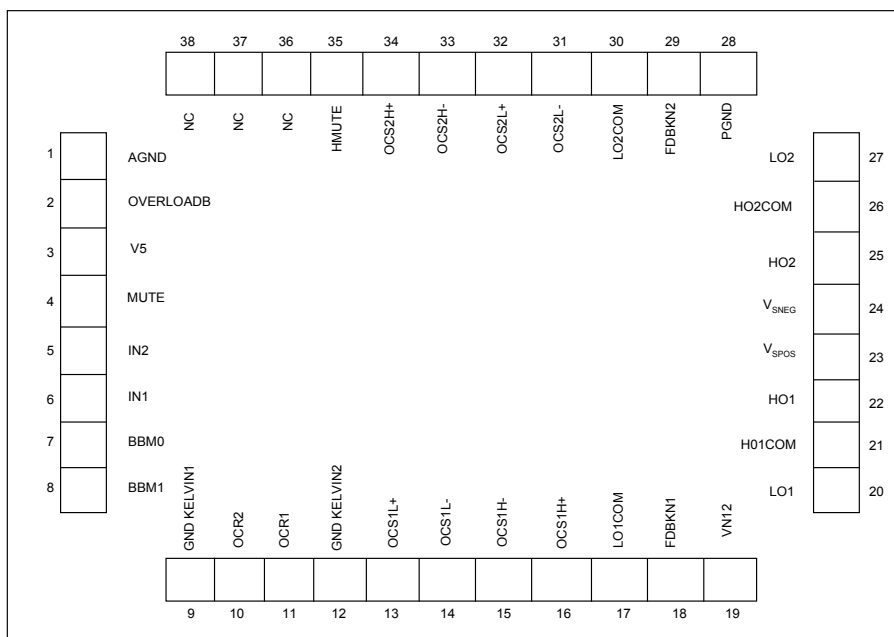
#### Notes:

- V<sub>5</sub> = +5V, V<sub>N12</sub> = +12V referenced to V<sub>SNEG</sub>
- Test/Application Circuit Values:
  - D = MUR120T3 diodes, R<sub>IN</sub> = 22.1KΩ
  - R<sub>D</sub> = 33Ω, R<sub>S</sub> = 0.025Ω, R<sub>G</sub> = 5.6Ω
  - R<sub>OCR1</sub> = R<sub>OCR2</sub> = 0Ω, L<sub>F</sub> = 18uH (Amidon core T200-2)
  - C<sub>F</sub> = 0.22uF, C<sub>D</sub> = 0.1uF, C<sub>IN</sub> = 1uF, C<sub>BY</sub> = 0.1uF
  - Power Output MOSFETs, M = ST STW38NB20
  - BBMO=BBM1=1

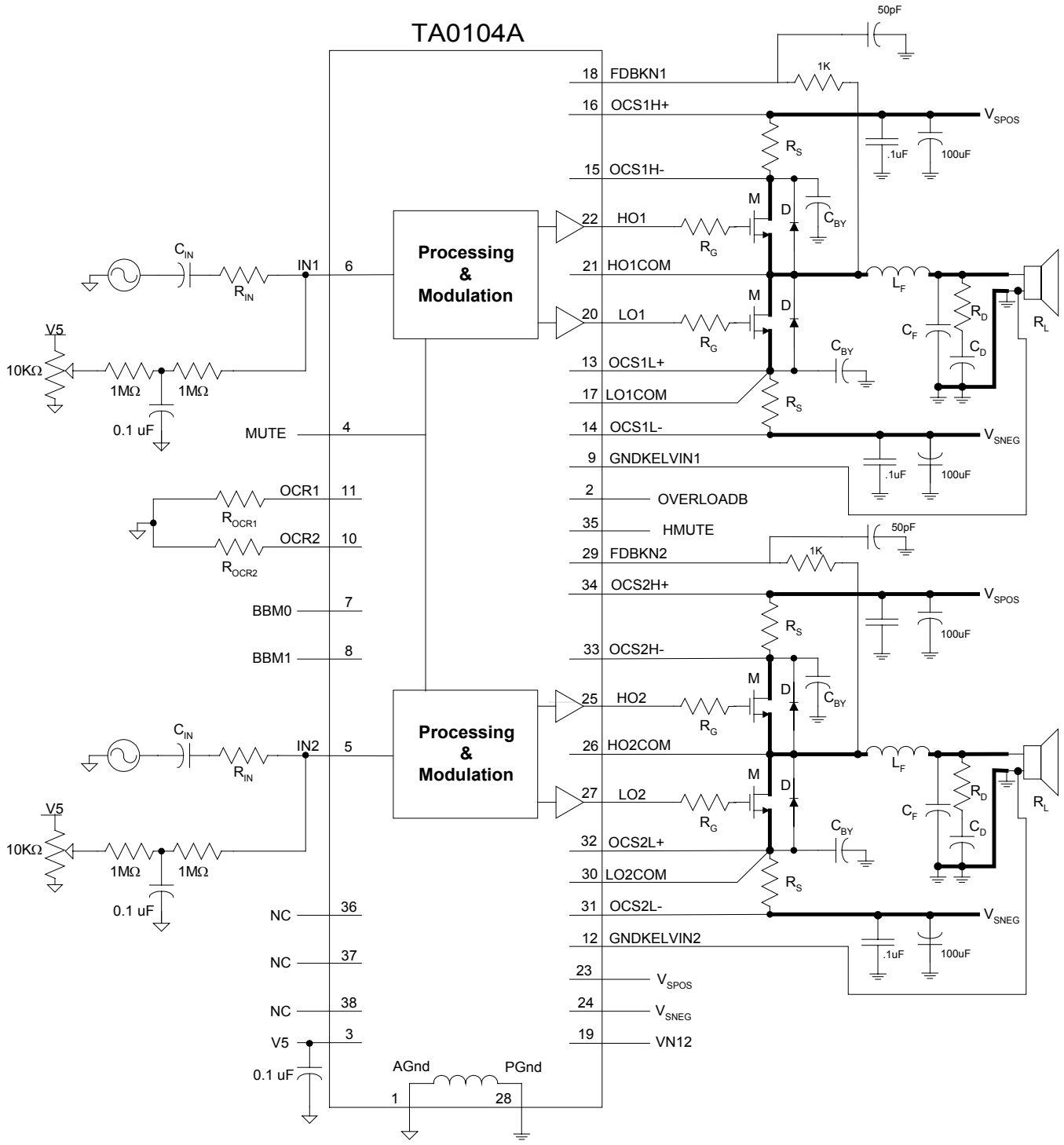
### Pin Description

Pin	Function	Description
1	AGND	Analog Ground
2	OVERLOADB	Logic output. When low, indicates that the level of the input signal has overloaded the amplifier.
3	V5	Positive 5 Volts
4	MUTE	Logic input. When high, both amplifiers are muted. When low (grounded), both amplifiers are fully operational.
5, 6	IN2, IN1	Single-ended input (Channel 1 & 2)
7, 8	BBM0, BBM1	Break-before-make timing control
9, 12	GNDKELVIN1, GNDKELVIN2	Kelvin connection to speaker ground (Channel 1 & 2)
10, 11	OCR2, OCR1	Over-current threshold adjustment (Channel 1 & 2)
13, 14	OCS1L+, OCS1L-	Over Current Sense resistor, Channel 1 low-side
15, 16	OCS1H-, OCS1H+	Over Current Sense resistor, Channel 1 high-side
17, 30	LO1COM, LO2COM	Kelvin connection to source of low-side transistor (Channel 1 & 2)
18, 29	FDBKN1;FDBKN2	Feedback (Channel 1 & 2)
19	VN12	Voltage: +12 V from V <sub>SNEG</sub> . Refer to Application Information section.
20, 27	LO1, LO2	Low side gate drive output (Channel 1 & 2)
21, 26	HO1COM, HO2COM	Kelvin connection to source of high-side transistor (Channel 1 & 2)
22, 25	HO1, HO2	High side gate drive output (Channel 1 & 2)
23	V <sub>SPOS</sub>	Positive supply voltage
24	V <sub>SNEG</sub>	Negative supply voltage
28	PGND	Power Ground
31, 32	OCS2L-, OCS2L+	Over Current Sense resistor, Channel 2 low-side
33, 34	OCS2H-, OCS2H+	Over Current Sense resistor, Channel 2 high-side
35	HMUTE	Logic output. When high, indicates that the output stages of both amplifiers are shut off and muted.
36, 37, 38	NC	Not Connected - Must Be Left Floating

### 38 Pin Quad Package Pin-out (Top View)

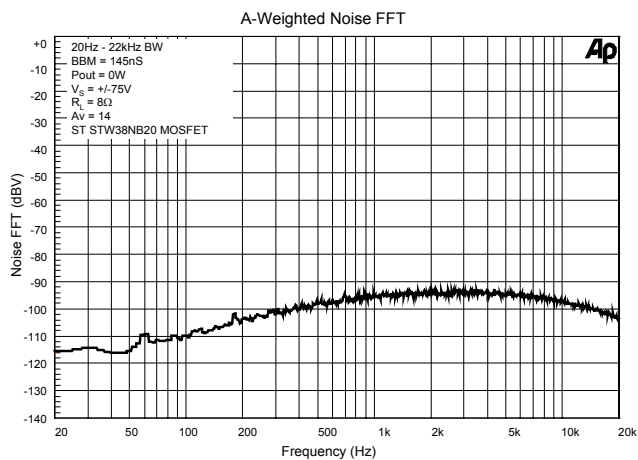
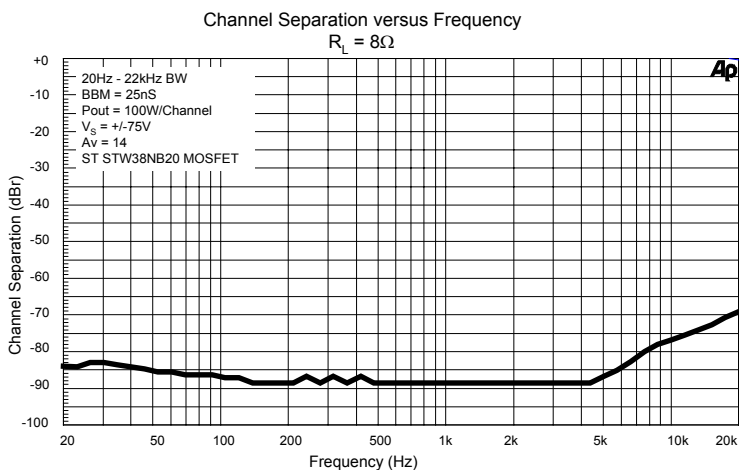
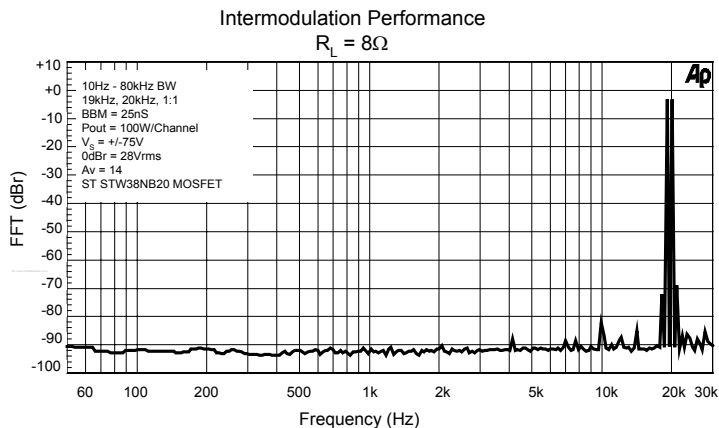
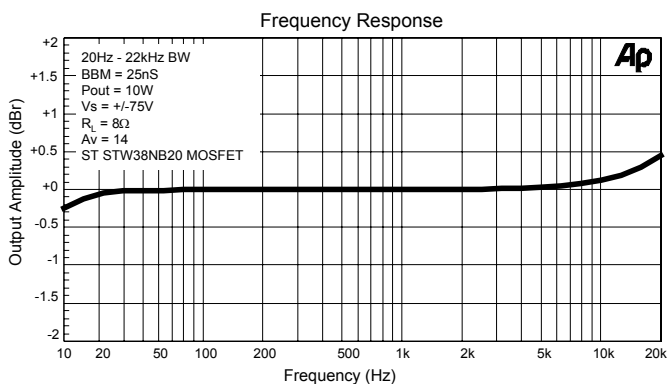
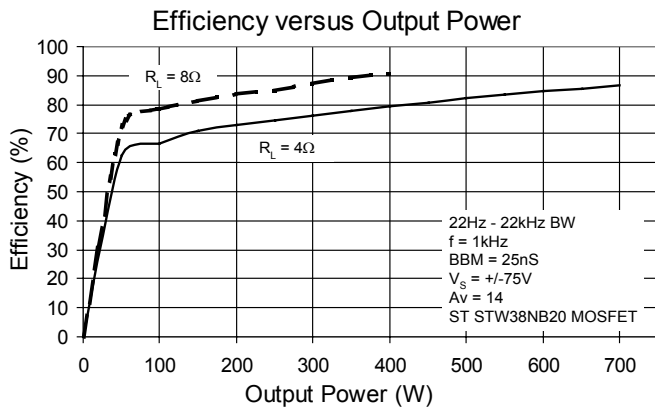
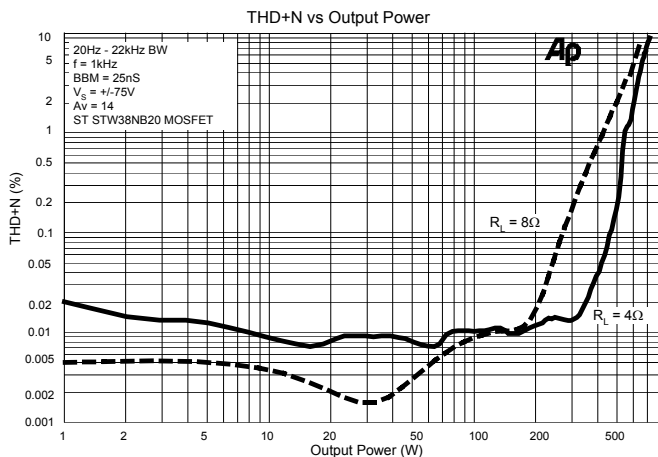


# Test/Application Circuit



NC - Not Connected (Must Be Left Floating)  
 Note - Heavy Lines Indicate High-Current Paths

### Typical Performance at Vs = +75V



## Functional Description

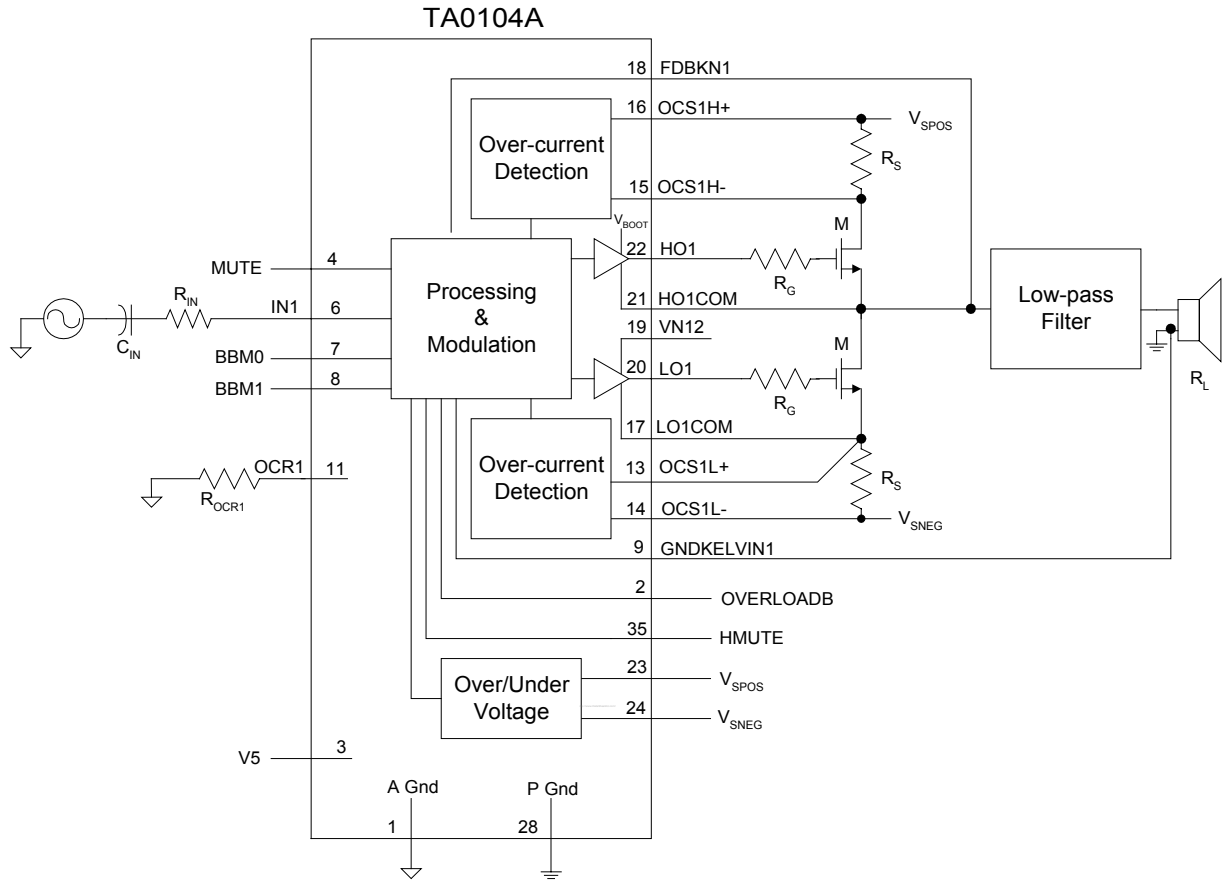


Figure 1. Simplified TA0104A Amplifier

## TA0104A Amplifier Operation

Figure 1 is a simplified diagram of one channel (Channel 1) of a TA0104A amplifier to assist in understanding its operation.

The audio input signal (IN1) is fed to the processor internal to the TA0104A, where a modulation pattern is generated. This pattern is spread spectrum and varies between approximately 200kHz and 1.5MHz. Complementary copies of the switching pattern are level-shifted by the MOSFET drivers and output from the TA0104A where they drive the gates (HO1 and LO1) of external power MOSFETs that are connected as a half bridge. The output of the half bridge is a power-amplified version of the switching pattern that switches between  $V_{SPOS}$  and  $V_{SNEG}$ . This signal is then low-pass filtered to obtain amplified audio.

The processor portion of the TA0104A is operated from a 5-volt supply (between V5 and AGND). In the generation of the complementary modulation pattern for the output MOSFETs, the processor inserts a “break-before-make” dead time between when it turns one transistor off and it turns the other one on in order to minimize shoot-through currents in the MOSFETs. The dead time can be programmed by setting the break-before-make control bits, BBM0 and BBM1. Feedback information from the output of the half-bridge is supplied to the processor via FDBKN1. Additional feedback information to account for ground bounce is supplied via GNDKELVIN1.

The MOSFET drivers in the TA0104A are operated from voltages obtained from VN12 and LO1COM for the low-side driver, and  $V_{BOOT}$  (generated internal to the TA0104A) and HO1COM for the high-side. Only N-Channel MOSFETs are required for both the top and bottom of the half bridge. VN12 must be a stable 12V above  $V_{SNEG}$ . The gate resistors,  $R_G$ , are used to control MOSFET slew rate and thereby minimize voltage overshoots.

## Over- and Under-Voltage Protection

The TA0104A senses the power rails through  $V_{SPOS}$  and  $V_{SNEG}$  for over- and under-voltage conditions. The over- and under-voltage limits are  $V_o$  and  $V_u$  respectively as specified in the Electrical Characteristics table. If the supply voltage exceeds  $V_o$  or drops below  $V_u$ , the TA0104A shuts off the output stages of the amplifiers and asserts a logic level high on HMUTE. The removal of the over-voltage or under-voltage condition returns the TA0104A to normal operation and returns HMUTE to a logic level low. Please note that the limits specified in the Electrical Characteristics table are at 25°C and these limits may change over temperature.

## Over-current Protection

The TA0104A has over-current protection circuitry to protect itself and the output transistors from short-circuit conditions. The TA0104A uses the voltage across a resistor,  $R_S$  (measured via OCS1H+, OCS1H-, OCS1L+ and OCS1L-), that is in series with each output MOSFET to detect an over-current condition.  $R_S$  and  $R_{OCR}$  are used to set the over-current threshold. The OCS pins must be Kelvin connected for proper operation. See “Circuit Board Layout” in Application Information for details. An over-current condition will cause the TA0104A to shut off the output stages of the amplifiers and supply a logic level high on HMUTE. The occurrence of an over-current condition is latched in the TA0104A and can be cleared by toggling the MUTE input or cycling power.



### Overload

When logic low, the OVERLOADB pin indicates that the level of the input signal has overloaded the amplifier and that the audio output signal is starting to distort. The OVERLOADB signal is active only while an overload is present. The OVERLOADB signal can be used to control a distortion indicator light or LED through a simple buffer circuit.

### Mute

When a logic high signal is supplied to MUTE, both amplifier channels are muted (both high- and low-side transistors are turned off) and a logic level high is output on the HMUTE pin. When a logic level low is supplied to MUTE, both amplifiers are fully operational and a logic level low is supplied on HMUTE. There is a delay of approximately 200 milliseconds between the de-assertion of MUTE and the un-muting of the TA0104A.

## **Application Information**

### Amplifier Gain and Input Resistor Selection

The value of the input resistor,  $R_{IN}$ , is based on the required voltage gain,  $A_V$ , of the amplifier according to:

$$A_V = 800 \times 10^3 / (R_{IN} + 5000)$$

where  $R_{IN}$  = Input resistor value in ohms.

### Input Capacitor Selection

$C_{IN}$  can be calculated once a value for  $R_{IN}$  has been determined.  $C_{IN}$  and  $R_{IN}$  determine the input low-frequency pole. Typically this pole is set at 10 Hz.  $C_{IN}$  is calculated according to:

$$C_{IN} = 1 / (2\pi \times F_P)(R_{IN} + 5000)$$

where:

$R_{IN}$  = Input resistor value in ohms.

$F_P$  = Input low frequency pole (typically 10Hz).

### DC Offset Adjust

While the DC offset voltages that appear at the speaker terminals of a TA0104A amplifier are typically small, Tripath recommends that any offsets during operation be nulled out of the amplifier with a circuit like the one shown connected to IN1 and IN2 in the Test/Application Circuit.

It should be noted that the DC voltage on the output of a TA0104A amplifier with no load in mute mode is approximately 2.5V. This offset does not need to be nulled. The output impedance of the amplifier in mute mode is approximately 10 KOhms. This means that the 2.5V drops to essentially zero when a typical load is connected.

Supply Voltage and Output Power

The relationship between the bipolar power supply voltage needed,  $V_S$ , for a given RMS output power,  $P_{OUT}$ , into a given load,  $R_L$ , at a given level of THD (total harmonic distortion) is approximated by:

$$V_S = (2 \times R_L \times P_{OUT})^{0.5} / (K \times R_L / (R_L + R_{ON} + R_S + R_{COIL}))$$

where:

$R_{ON}$  = The at-temperature  $R_{DS(ON)}$  of the output transistors, M.

$R_{COIL}$  = Resistance of the output filter inductor.

$R_S$  = Sense Resistor

$K$  = THD Factor, a number fixed by the algorithms in the TA0104A's signal processor that provides the relationship between THD *at full output power* of the amplifier and  $V_S$ .  $K$  corresponds to THD at full output power as follows:

THD	K
0.1%	0.83
1%	0.95
10%	1.09

Typical measurement graphs of  $P_{OUT}$  versus supply voltage for various levels of THD are also included in this data sheet to help determine the supply voltage.

Bridged Operation

Note that the two channels of a TA0104A amplifier can be used to provide a single, bridged amplifier of almost four times the output power of one of the single-ended amplifier channels. To configure a bridged amplifier, the input to one TA0104A channel must be the inverted signal of the input to the other channel.

Low-frequency Power Supply Pumping

A potentially troublesome phenomenon in single-ended switching amplifiers is power supply pumping. This is caused by current from the output filter inductor flowing into the power supply output filter capacitors in the opposite direction as a DC load would drain current from them. Under certain conditions (usually low-frequency input signals), this current can cause the supply voltage to “pump” (increase) and eventually cause over-voltage/under-voltage shut down. Moreover, since over/under-voltage are not “latched” shutdowns, the effect would be an amplifier that oscillates between on and off states. If a DC offset on the order of 0.3V is allowed to develop on the output of the amplifier (see “DC Offset Adjust”), the supplies can be boosted to the point where the amplifier's over-voltage protection triggers.

One solution to the pumping issue is to use large power supply capacitors to absorb the pumped supply current without significant voltage boost. The low frequency pole used at the input to the driver determines the value of the supply capacitor required.

Another solution to the supply pumping problem uses the fact that music has low frequency information that is correlated in both channels (it is in phase). This information can be used to eliminate boost by putting the two channels of a TA0104A amplifier out of phase with each other. This works because each channel is pumping out of phase with the other, and the net effect is a cancellation of pumping currents. The phase of the audio signals needs to be corrected by connecting one of the speakers in the opposite polarity as the other channel.

### VN12 Supply

VN12 is an additional supply voltage required by the TA0104A. VN12 must be 12 volts more positive than the nominal  $V_{SNEG}$ . VN12 must track  $V_{SNEG}$ , so if an unregulated supply is used for  $V_{SNEG}$ , the design of the supply for VN12 must behave accordingly. Generating the VN12 supply requires some care.

The proper way to generate the voltage for VN12 is to use a 12V-supply voltage referenced to the  $V_{SNEG}$  supply rather than to ground (PGND). Figure 3 shows the correct way to power the TA0104A:

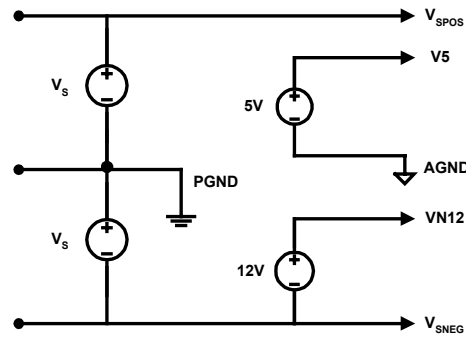


Figure 3

One method to generate the VN12 supply voltage is to use a positive 12V IC regulator to drop PGND down to 12V (relative to  $V_{SNEG}$ ). Care must be exercised with this method because some IC regulators such as the LM340 series will not function properly with a large voltage drop across the regulator, resulting in damage to the TA0104A.

Generating the VN12 voltage per Figure 4 is NOT recommended. Most power supplies only source current from the positive terminal and will not be capable of generating the current required by VN12. Furthermore, problems can arise since VN12 will not track movements in  $V_{SNEG}$ .

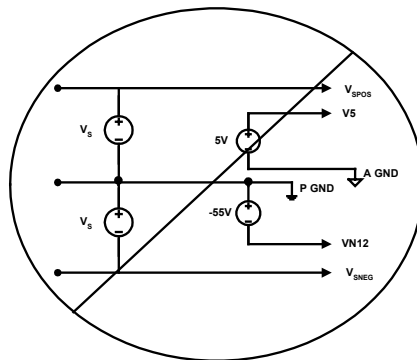


Figure 4

Setting Over-current Threshold

$R_S$  and  $R_{OCR}$  determine the value of the over-current threshold,  $I_{SC}$ :

$$I_{SC} \times R_S = (V_{TOC} \times 9100) / (9100 + R_{OCR})$$

where:

$R_S$  and  $R_{OCR}$  are in  $\Omega$

$I_{SC} = 3 \times I_{RMS} = 3 \times (P_{OUT}/R_L)^{0.5}$  (Over-current is typically set for 3 x RMS current)

$V_{TOC}$  = Over-current sense threshold voltage (See Electrical Characteristics Table)

= 0.75V typically

when  $R_{OCR} = 0\Omega$ ,  $R_S = (0.75)/I_{SC}$

Note that  $R_S$  will dissipate approximately  $(I_{RMS})^2 \times R_S$  of power. To set an  $I_{SC}$  of 30A, for example, with  $R_{OCR} = 0\Omega$ , means that  $R_S = 25m\Omega$  and  $R_S$  must dissipate 2.5W on average. If  $R_{OCR} = 9.1K\Omega$ , then to set  $I_{SC} = 30A$ ,  $R_S$  will be 12.5m $\Omega$  and will only have to dissipate 1.13W on average.

As high-wattage resistors are usually only available in a few low-resistance values (10m $\Omega$ , 25m $\Omega$  and 50m $\Omega$ ),  $R_{OCR}$  can be used to adjust for a particular over-current threshold using one of these values for  $R_S$ .

Output Transistor Selection

The key parameters to consider when selecting a MOSFET to use with the TA0104A are drain-source breakdown voltage ( $BV_{dss}$ ), gate charge ( $Q_g$ ), and on-resistance ( $R_{DS(ON)}$ ).

The  $BV_{dss}$  rating of the MOSFET needs to be selected to accommodate the voltage swing between  $V_{SPOS}$  and  $V_{SNEG}$  as well as any voltage peaks caused by voltage ringing due to switching transients. With a 'good' circuit board layout, a  $BV_{dss}$  that is 50% higher than the  $V_{SPOS}$  and  $V_{SNEG}$  voltage swing is a reasonable starting point. The  $BV_{dss}$  rating should be verified by measuring the actual voltages experienced by the MOSFET in the final circuit.

Ideally a low  $Q_g$  (total gate charge) and low  $R_{DS(ON)}$  are desired for the best amplifier performance. Unfortunately, these are conflicting requirements since  $R_{DS(ON)}$  is inversely proportional to  $Q_g$  for a typical MOSFET. The design trade-off is one of cost versus performance. A lower  $R_{DS(ON)}$  means lower  $I^2R_{DS(ON)}$  losses but the associated higher  $Q_g$  translates into higher switching losses (losses =  $Q_g \times 12 \times 1.2MHz$ ). A lower  $R_{DS(ON)}$  also means a larger silicon die and higher cost. A higher  $R_{DS(ON)}$  means lower cost and lower switching losses but higher  $I^2R_{DS(ON)}$  losses.

The following table lists  $BV_{dss}$ ,  $Q_g$  and  $R_{DS(ON)}$  for MOSFETs that Tripath has used with the TA0104A:

Mfg. Part Number	$BV_{dss}$	$Q_g$ (Max) (nanoCoulombs)	$R_{DS(ON)}$ (Max) (Ohms)
ST STW34NB20	200	80	0.075
ST STW38NB20	200	95	0.065
ST STP19NB20	200	40	0.18

### Gate Resistor Selection

The gate resistors,  $R_G$ , are used to control MOSFET switching rise/fall times and thereby minimize voltage overshoots. They also dissipate a portion of the power resulting from moving the gate charge each time the MOSFET is switched. If  $R_G$  is too small, excessive heat can be generated in the driver. Large gate resistors lead to slower MOSFET switching, which requires a larger break-before-make (BBM) delay. Tripath recommends using an  $R_G$  of  $10\Omega$  when the  $Q_g$  of the MOSFET is less than  $70nC$  and  $5.6\Omega$  when the  $Q_g$  is greater than  $70nC$ .

### Break-Before-Make (BBM) Timing Control

The half-bridge power MOSFETs require a deadtime between when one transistor is turned off and the other is turned on (break-before-make) in order to minimize shoot through currents. BBM0 and BBM1 are logic inputs (connected to logic high or pulled down to logic low) that control the break-before-make timing of the output transistors according to the following table. Note that if either BBM0 or BBM1 are left floating, they are pulled internally to a logic high level.

<b>BBM1</b>	<b>BBM0</b>	<u>Delay</u>
0	0	145nS
0	1	105nS
1	0	65nS
1	1	25nS

The tradeoff involved in making this setting is that as the delay is reduced, distortion levels improve but shoot-through and power dissipation increase. Since the actual amount of BBM required is dependent upon other component values and circuit board layout, the value selected should be verified in the actual application circuit/board. It should also be verified under maximum temperature and power conditions since shoot-through in the output MOSFETs can increase under these conditions, possibly requiring a higher BBM setting than at room temperature.

### Clamping Diodes

The purpose of the diode,  $D$ , across each of the output MOSFETs is to clamp the voltages the MOSFET experiences to levels within its rating to prevent damage. Tripath recommends that fast-recovery or schottky diodes be used for this purpose. The breakdown voltage rating of this diode should be similar to that of the MOSFET. Also, the forward voltage drop of this diode should be less than that of the internal body diode of the MOSFET.

### MOSFET Bypass Capacitor

Bypass capacitors,  $C_{BY}$ , are necessary for each output MOSFET at the nodes shown in the Test/Application Circuit to damp voltage ringing at these nodes due to the high currents flowing through the parasitic (circuit board trace) inductance.  $C_{BY}$  should be  $0.1\mu F$  and have the appropriate voltage rating. They should be physically located as close to the MOSFET leads as possible.

### Turn-on & Turn-off Noise

If turn-on or turn-off noise is present in a TA0104A amplifier, the cause is frequently due to other circuitry external to the TA0104A. While the TA0104A has circuitry to suppress turn-on and turn-off transients, the combination of the power supply and other audio circuitry with the TA0104A in a particular application may exhibit audible transients. One solution that will completely eliminate turn-on and turn-off pops and clicks is to use a relay to connect/disconnect the amplifier from the speakers with the appropriate timing at power on/off. The relay can also be used to protect the speakers from a component failure (e.g. shorted output MOSFET), which is a protection mechanism that some amplifiers have. Circuitry external to the TA0104A would need to be implemented to detect these failures.

### Output Filter Design

One advantage of Tripath amplifiers over PWM solutions is the ability to use higher-cutoff-frequency filters. This means any load-dependent peaking/droop in the 20kHz audio band potentially caused by the filter can be made negligible. This is especially important for applications where the user may select a 4-Ohm or 8-Ohm speaker. Furthermore, speakers are not purely resistive loads and the impedance they present changes over frequency and from speaker model to speaker model.

Tripath recommends designing the filter as a 2nd order, 80kHz LC filter. Tripath has obtained good results with  $L_F = 18\mu\text{H}$  and  $C_F = 0.22\mu\text{F}$  for a nominal impedance of  $8\Omega$ .

The core material of the output filter inductor has an effect on the distortion levels produced by a TA0104A amplifier. Tripath recommends low-mu type-2 iron powder cores because of their low loss and high linearity.

Tripath also recommends that an RC damper be used after the LC low-pass filter. No-load operation of a TA0104A amplifier can create significant peaking in the LC filter, which produces strong resonant currents that can overheat the output MOSFETs and/or other components. The RC dampens the peaking and prevents problems. Tripath has obtained good results with  $R_D = 33\Omega$  and  $C_D = 0.1\mu\text{F}$ .

It is highly recommended that the design process for a TA0104A amplifier include an analysis of the interaction of intended speaker(s) with the LC filter and RC damper to ensure the desired frequency response is attained. Component values for the LC filter and RC damper may need to be altered from the Tripath suggestions to achieve the required response.

### Grounding

Tripath recommends not connecting analog ground (AGND) to power ground (PGND) externally, as this connection is already made internal to the TA0104A.

### Circuit Board Layout

Considerable care needs to be taken in the layout of the circuit board for a TA0104A amplifier. The high currents flowing through PCB traces and the inductive effects due to the switching frequencies involved can cause large overshoot and undershoot voltages if care is not taken. A general rule to follow is to keep the PCB trace of each signal path to/from each lead of each output MOSFET as short as physically possible.

Certain circuit functions in a TA0104A amplifier cannot share PCB return paths with other functions because of the resistive and inductive effects of the switching currents and frequencies used. These so-called 'Kelvin' paths must each have a dedicated PCB trace from the TA0104A to their destination. The following signals should be treated as Kelvin paths: OCS1H+, OCS1H-, OCS1L+, OCS1L-, OCS2H+, OCS2H-, OCS2L+, OCS2L-, FDBKN1, FDBKN2, GNDKELVIN1 and GNDKELVIN2.

### Performance Measurements of a TA0104A Amplifier

Tripath amplifiers operate by modulating the input signal with a high-frequency switching pattern. This signal is sent through a low-pass filter (external to the Tripath amplifier) that demodulates it to recover an amplified version of the audio input. The frequency of the switching pattern is spread spectrum and typically varies between 200kHz and 1.5MHz, which is well above the 20Hz – 22kHz audio band. The pattern itself does not alter or distort the audio input signal but it does introduce some inaudible noise components.

The measurements of certain performance parameters, particularly those that have anything to do with noise, like THD+N, are significantly affected by the design of the low-pass filter used on the output of the TA0104A and also the bandwidth setting of the measurement instrument used. Unless the filter has a very sharp roll-off just past the audio band or the bandwidth of the measurement instrument ends there, some of the inaudible noise components introduced by the Tripath amplifier switching pattern will get integrated into the measurement, degrading it.

One advantage of Tripath amplifiers is that they do not require large multi-pole filters to achieve excellent performance in listening tests, usually a more critical factor than performance measurements. Though using a multi-pole filter may remove high-frequency noise and improve THD+N type measurements (when they are made with wide-bandwidth measuring equipment), these same filters can increase distortion due to inductor non-linearity. Multi-pole filters require relatively large inductors, and inductor non-linearity increases with inductor value.

Efficiency Of A TA0104A Amplifier

The efficiency,  $\eta$ , of an amplifier is:

$$\eta = P_{OUT}/P_{IN}$$

The power dissipation of a TA0104A amplifier is primarily determined by the on resistance,  $R_{ON}$ , of the output transistors used, and the switching losses of these transistors,  $P_{SW}$ . For a TA0104A amplifier,  $P_{IN}$  (per channel) is approximated by:

$$P_{IN} = P_{DRIVER} + P_{SW} + P_{OUT} ((R_S + R_{ON} + R_{COIL} + R_L)/R_L)^2$$

where:

$P_{DRIVER}$  = Power dissipated in the TA0104A = 1.6W/channel

$P_{SW} = 2 \times (0.015) \times Q_g$  ( $Q_g$  is the gate charge of M, in nano-coulombs)

$R_{COIL}$  = Resistance of the output filter inductor (typically around 50m $\Omega$ )

For an 400W RMS per channel, 8 $\Omega$  load amplifier using STW38NB20 MOSFETs, and an  $R_S$  of 50m $\Omega$ ,

$$\begin{aligned} P_{IN} &= P_{DRIVER} + P_{SW} + P_{OUT} ((R_S + R_{ON} + R_{COIL} + R_L)/R_L)^2 \\ &= 1.6 + 2 \times (0.015) \times (95) + 400 \times ((0.025 + 0.11 + 0.05 + 8)/8)^2 \\ &= 1.6 + 2.85 + 419 \\ &= 423W \end{aligned}$$

In the above calculation the  $R_{DS(ON)}$  of 0.065 $\Omega$  was multiplied by a factor of 1.7 to obtain  $R_{ON}$  in order to account for some temperature rise of the MOSFETs. ( $R_{DS(ON)}$  typically increases by a factor of 1.7 as for a typical MOSFET as temperature increases from 25 $^{\circ}$ C to 170 $^{\circ}$ C.)

So,

$$\eta = P_{OUT}/P_{IN} = 400/423 = 94\%$$

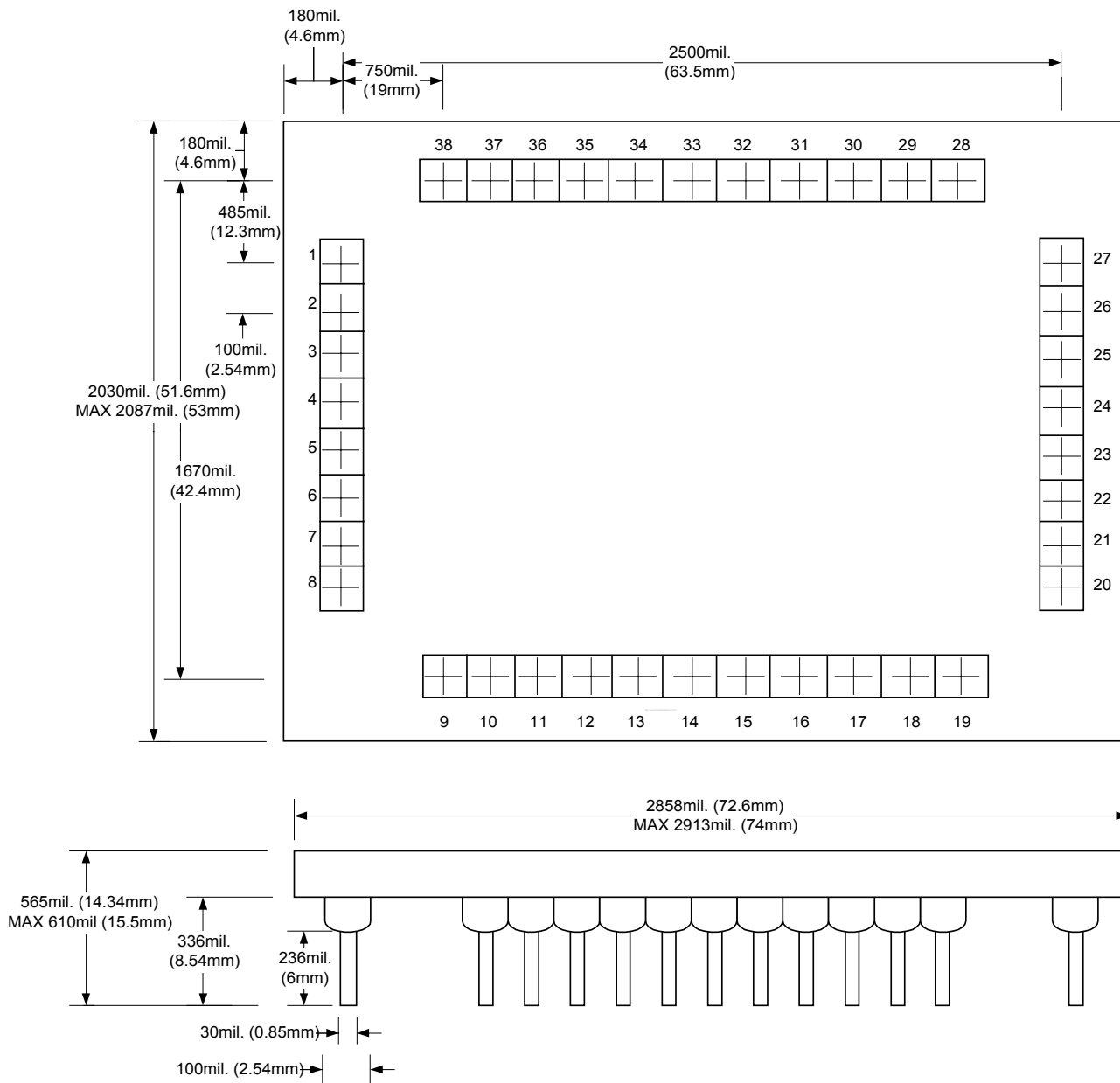
This compares to the 90% measured efficiency (see Typical Performance graphs).

Technical Documentation

Please refer to the Tripath "Application Notes" section on our web page (<http://www.tripath.com/html/tech.htm#appnotes>) for more information regarding evaluation, test and design of Class-T amplifiers.



# Package Information



## 38 Pin Quad Module

Phyco Socket: 4150-1 x 8SF1 8 position header female  
 4150-1 x 1SF1 11 position header female

This data sheet contains the design specifications for a product in development. Specifications may change in any manner without notice. Tripath and Digital Power Processing are trademarks of Tripath Technology Inc. Other trademarks referenced in this document are owned by their respective companies.

Tripath Technology Inc. reserves the right to make changes without further notice to any products herein to improve reliability, function or design. Tripath does not assume any liability arising out of the application or use of any product or circuit described herein; neither does it convey any license under its patent rights, nor the rights of others.

TRIPATH'S PRODUCTS ARE NOT AUTHORIZED FOR USE AS CRITICAL COMPONENTS IN LIFE SUPPORT DEVICES OR SYSTEMS WITHOUT THE EXPRESS WRITTEN CONSENT OF THE PRESIDENT OF TRIPATH TECHNOLOGY INC.

As used herein:

1. Life support devices or systems are devices or systems which, (a) are intended for surgical implant into the body, or (b) support or sustain life, and whose failure to perform, when properly used in accordance with instructions for use provided in this labeling, can be reasonably expected to result in significant injury to the user.
2. A critical component is any component of a life support device or system whose failure to perform can be reasonably expected to cause the failure of the life support device or system, or to affect its safety or effectiveness.

## CONTACT INFORMATION

### World Wide Sales Offices

United States & Europe	Jim Hauer	<a href="mailto:jhauer@tripath.com">jhauer@tripath.com</a>	408.567.3089
SE Asia & China	Eugene Hsu	<a href="mailto:ehsu@tripath.com">ehsu@tripath.com</a>	886.2.2653.7428
Japan & Korea	Osamu Ito	<a href="mailto:ito@tripath.com">ito@tripath.com</a>	81.42.334.2433



### TRIPATH TECHNOLOGY, INC

3900 Freedom Circle  
 Santa Clara  
 CA 95054  
 408.567.3000  
[www.tripath.com](http://www.tripath.com)