

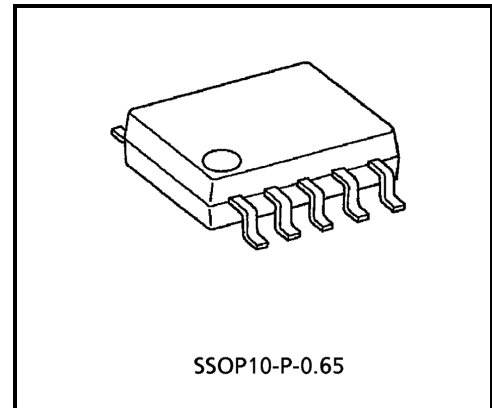
TA2015FN

Ripple Filter (1.5V USE)

The TA2015FN is a ripple filter IC, which is developed for low voltage operation (1.5V). It is especially suitable for supplying voltage for headphone stereo etc.

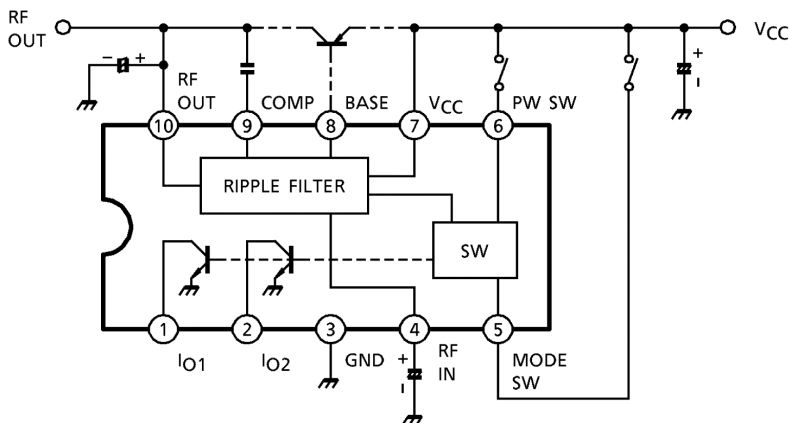
Features

- Built-in a power switch
- Excellent ripple rejection ratio: RR = 43dB (typ.)
- Ripple filter output voltage can be controlled by external resistor.
- Output voltage is limited to $V_{RF} = 1.5V$ (typ.)
- Built-in two constant current sources.
- Excellent low voltage operation.
- Low quiescent supply current ($V_{CC} = 1.2V, T_a = 25^\circ C$)
 $I_{CC} = 0.7mA$ (typ.)
- Operating supply voltage range. ($T_a = 25^\circ C$)
 $V_{CC(opr)} = 0.9\sim 2.2V$

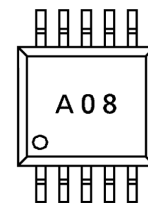


Weight: 0.04g (typ.)

Block Diagram



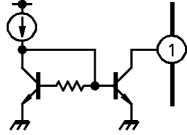
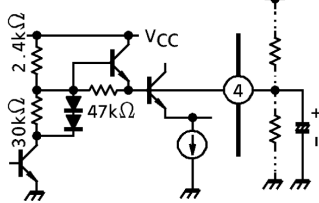
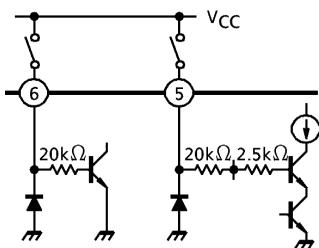
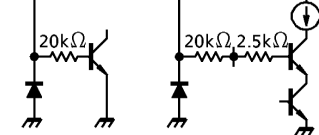
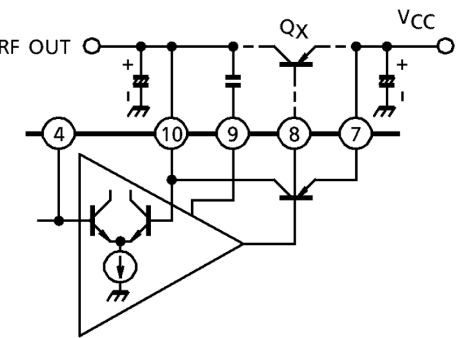
Marking



Terminal Explanation

Terminal Voltage: Typical Terminal Voltage with Test Circuit

($V_{CC} = 1.2V$, $T_a = 25^\circ C$, non load)

Terminal		Function	Internal Circuit	Terminal Voltage (V)
No.	Name			
1	I _{O1}	Output of constant current source 1 Operating condition PW SW : H MODE SW : L		—
2	I _{O2}	Output of constant current source 2 Synchronized to PW SW		—
3	GND	—	—	0
4	RF in	Ripple filter terminal Ripple filter output voltage can be controlled by external resistor. (See application note)		1.14
5	Mode SW	Mode switch V_{CC} : I _{O2} , RF OUT on GND / OPEN : I _{O1} , I _{O2} on		—
6	PW SW	Power switch V_{CC} : Power on GND / OPEN : Power off		—
7	V _{CC}	—	—	1.2
8	Base	Base biasing terminal for ripple filter transistor. Output current capacity is 1.2mA with only built-in PNP transistor. This capacity can be increased with an external transistor Q _X .		0.5
9	Comp	Phase compensation terminal for a ripple filter circuit		0.5
10	RF out	Ripple filter output		1.14

Application Note

1. Operation mode of constant current source
 Operation mode is decided by switch condition shown in table.1. Output of constant current source 1 can be used as a reset circuit by changing start up timing of PW SW, MODE SW.
2. Ripple filter output
 It is necessary to connect an external pull-down resistor with PW SW (pin(6)) and MODE SW (pin(5)) in case that ripple filter circuit doesn't operate normally due to external noise etc.
3. Adjustment of ripple filter output voltage
 Internal circuit of pin(4) is shown in Fig.1. Ripple filter output voltage is decided by internal resistor R1, R2 and Q3, and limited by D1~2 and Q3 to $V_{RF} = 1.5V$ (typ.)
 Ripple filter output voltage can be controlled by method below.

PW SW \ Mode SW	H	L
	H	I _{O2} RF OUT
L	—	—

Table.1 Operation mode

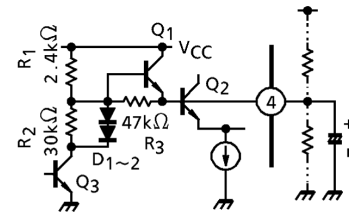


Fig.1 Internal circuit of pin④

- (1) Method to rise the ripple filter output voltage
 External resistor should be connected between VCC and RF IN terminal (pin(4)). In this case, output current capacity of ripple filter circuit is down. Because at ripple filter output stage, collector-emitter voltage of PNP transistor will small, and drive capacity of transistor is down.
- (2) Method to drop the ripple filter output voltage
 External resistor should be connected between GND and RF IN terminal (pin(4)).
 Current flows through external resistor and internal resistor R1, R3 (2.4kΩ, 47kΩ).
 In case that output voltage dropped too much, ripple rejection ratio and other characteristics will be worse, because constant current source of differential amplifier is saturated especially at low voltage.

Maximum Ratings (Ta = 25°C)

Characteristic	Symbol	Rating	Unit
Supply voltage	V _{CC}	4.5	V
Constant current source output voltage	V _S	4.5	
Constant current source output current	I _S	10	mA
Ripple filter output current (built-in transistor)	I _{RF}	20	
Power dissipation	P _D (Note)	300	mW
Operating temperature	T _{opr}	-25~75	°C
Storage temperature	T _{stg}	-55~150	

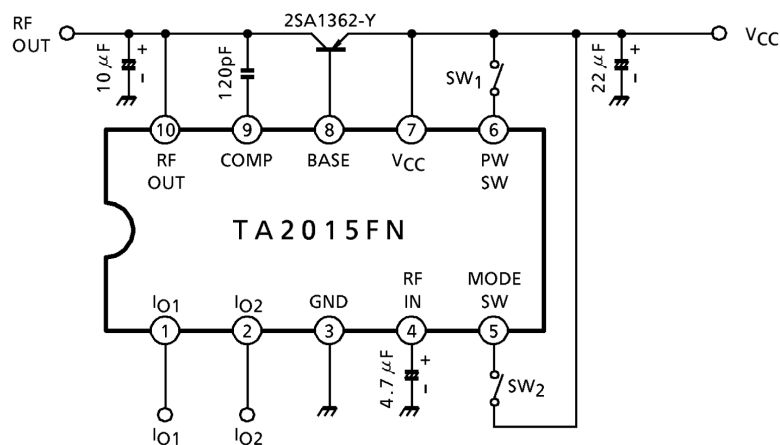
(Note) Derated above Ta = 25°C in the proportion of 2.4mW / °C.

Electrical Characteristics

(unless otherwise specified, V_{CC} = 1.2V, Ta = 25°C, SW₁: ON, SW₂: ON)

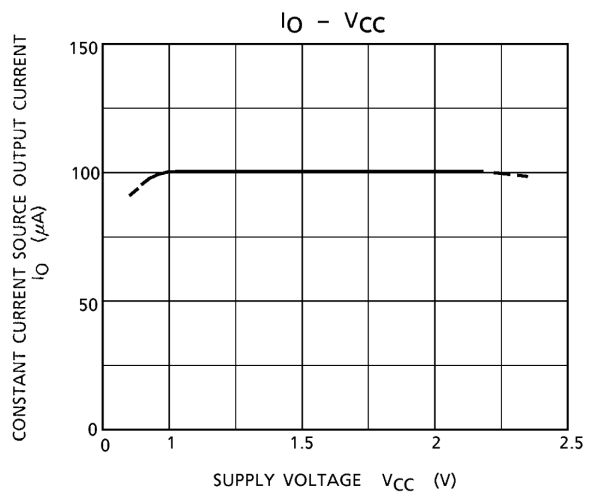
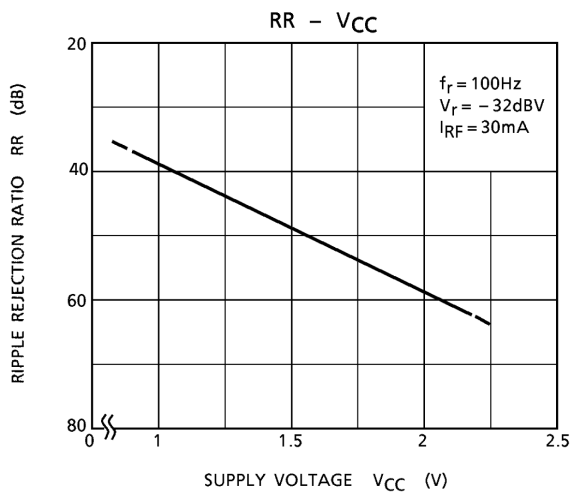
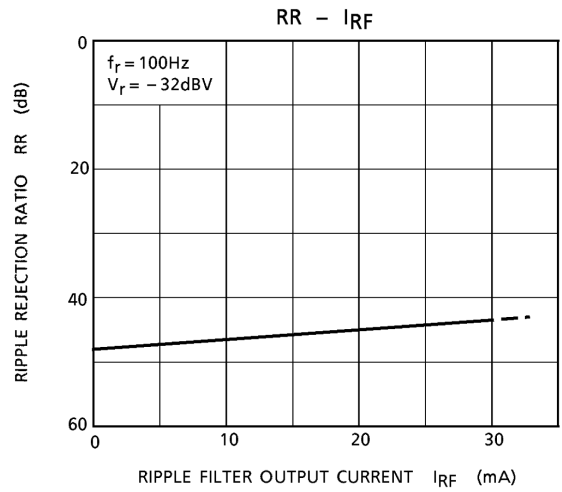
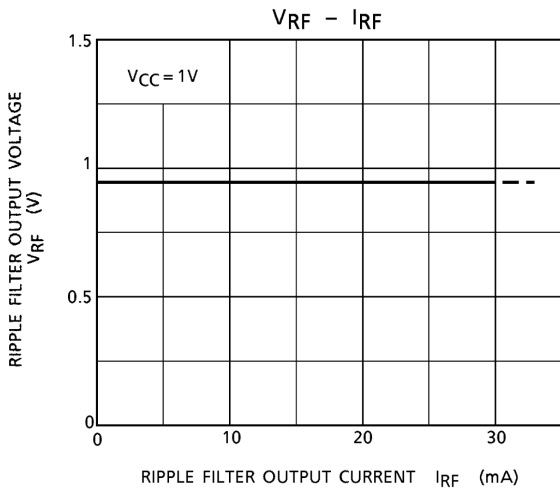
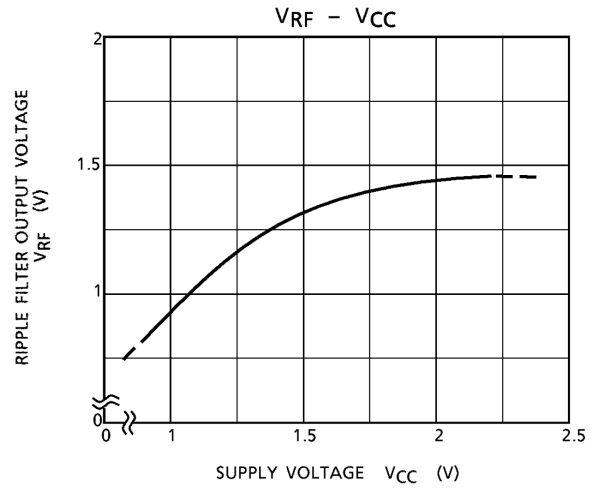
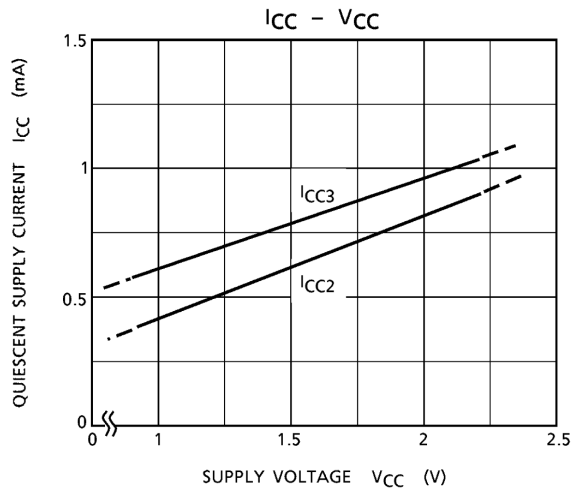
Characteristic	Symbol	Test Circuit	Test Condition	Min.	Typ.	Max.	Unit	
Quiescent supply current	I _{CC1}	—	PW off, SW ₁ : OPEN SW ₂ : OPEN	—	0.1	5	μA	
	I _{CC2}	—	SW ₂ : Open, I _{O1} = I _{O2} = 0	—	0.5	0.8	mA	
	I _{CC3}	—	I _{RF} = I _{O2} = 0	—	0.7	1.0		
Ripple filter output voltage	V _{RF}	—	V _{CC} = 1V, I _{RF} = 0	0.91	0.94	—	V	
Ripple rejection ratio	RR	—	V _r = -32dBV f _r = 100Hz, I _{RF} = 30mA	36	43	—	dB	
Constant current source output current	I _{O1}	—	SW ₂ : OPEN	50	—	—	μA	
	I _{O2}	—	—	50	—	—		
Power switch on current	I ₆	—	V _{CC} = 0.9V	V ₁₀ ≥ 0.6V	5	—	μA	
Power switch off voltage	V ₆	—		V ₁₀ ≤ 0.3V	0	—	0.3	V
Mode switch on current	I ₅	—		V ₁₀ ≥ 0.6V	5	—	μA	
Mode switch off voltage	V ₅	—		V ₁₀ ≤ 0.3V	0	—	0.3	V

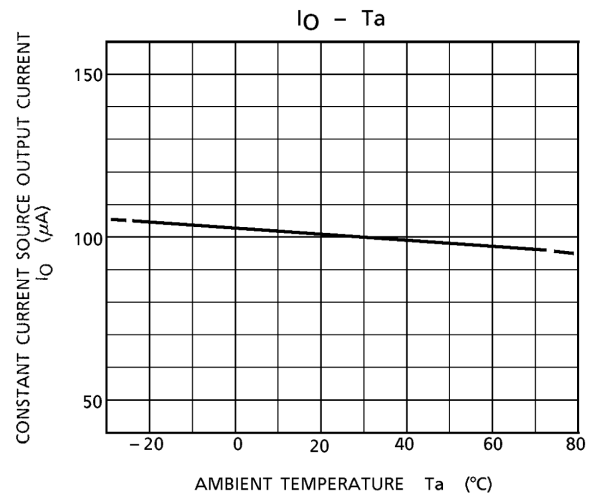
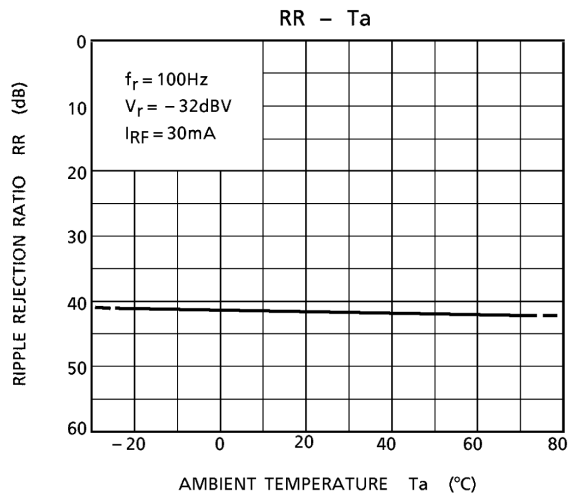
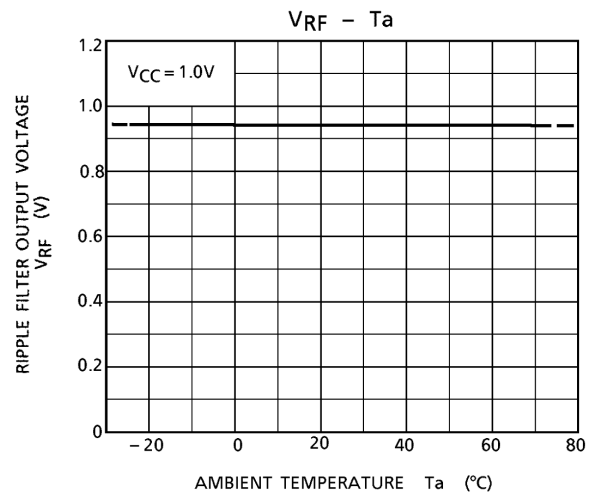
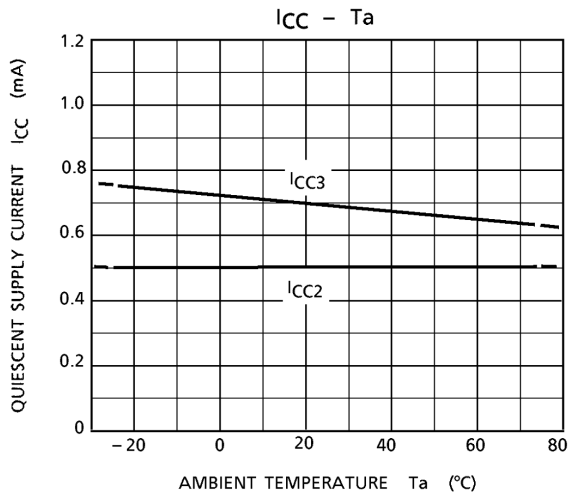
Test Circuit



Characteristic Curves

(unless otherwise specified, $V_{CC} = 1.2V$, $I_{RF} = 0$, $I_{O1} = I_{O2} = 0$, $T_a = 25^\circ C$)

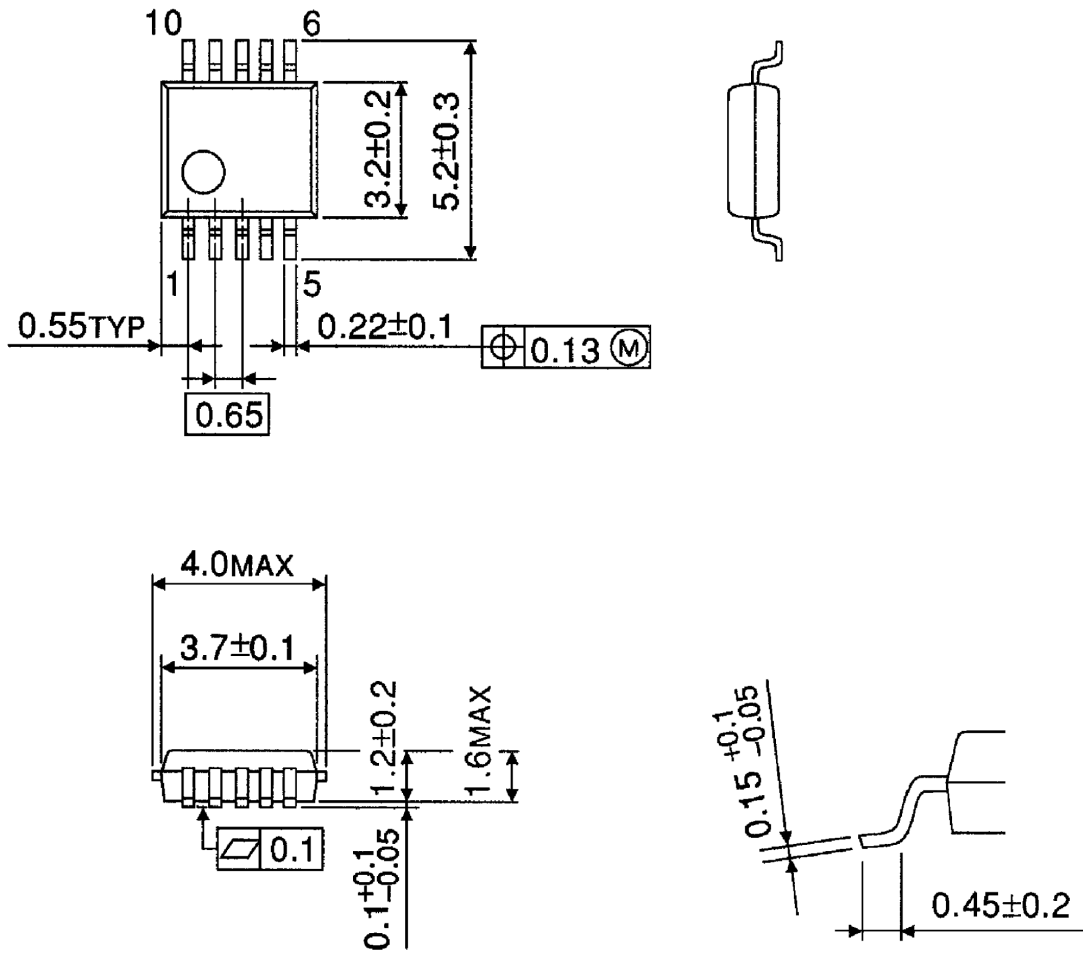




Package Dimensions

SSOP10-P-0.65

Unit : mm



Weight: 0.04g (typ.)

RESTRICTIONS ON PRODUCT USE

000707EBA

- TOSHIBA is continually working to improve the quality and reliability of its products. Nevertheless, semiconductor devices in general can malfunction or fail due to their inherent electrical sensitivity and vulnerability to physical stress. It is the responsibility of the buyer, when utilizing TOSHIBA products, to comply with the standards of safety in making a safe design for the entire system, and to avoid situations in which a malfunction or failure of such TOSHIBA products could cause loss of human life, bodily injury or damage to property.
In developing your designs, please ensure that TOSHIBA products are used within specified operating ranges as set forth in the most recent TOSHIBA products specifications. Also, please keep in mind the precautions and conditions set forth in the "Handling Guide for Semiconductor Devices," or "TOSHIBA Semiconductor Reliability Handbook" etc..
- The TOSHIBA products listed in this document are intended for usage in general electronics applications (computer, personal equipment, office equipment, measuring equipment, industrial robotics, domestic appliances, etc.). These TOSHIBA products are neither intended nor warranted for usage in equipment that requires extraordinarily high quality and/or reliability or a malfunction or failure of which may cause loss of human life or bodily injury ("Unintended Usage"). Unintended Usage include atomic energy control instruments, airplane or spaceship instruments, transportation instruments, traffic signal instruments, combustion control instruments, medical instruments, all types of safety devices, etc.. Unintended Usage of TOSHIBA products listed in this document shall be made at the customer's own risk.
- The products described in this document are subject to the foreign exchange and foreign trade laws.
- The information contained herein is presented only as a guide for the applications of our products. No responsibility is assumed by TOSHIBA CORPORATION for any infringements of intellectual property or other rights of the third parties which may result from its use. No license is granted by implication or otherwise under any intellectual property or other rights of TOSHIBA CORPORATION or others.
- The information contained herein is subject to change without notice.