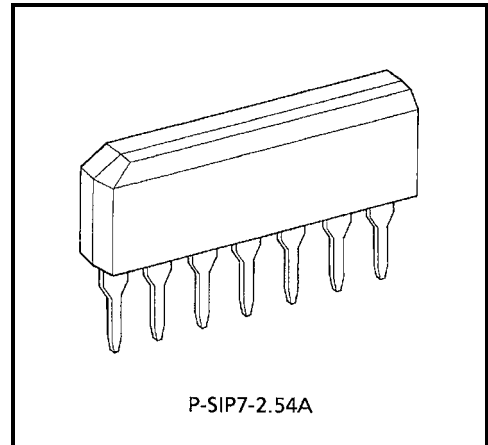


TA7510S

EARTH LEAK BREAKER

FEATURES

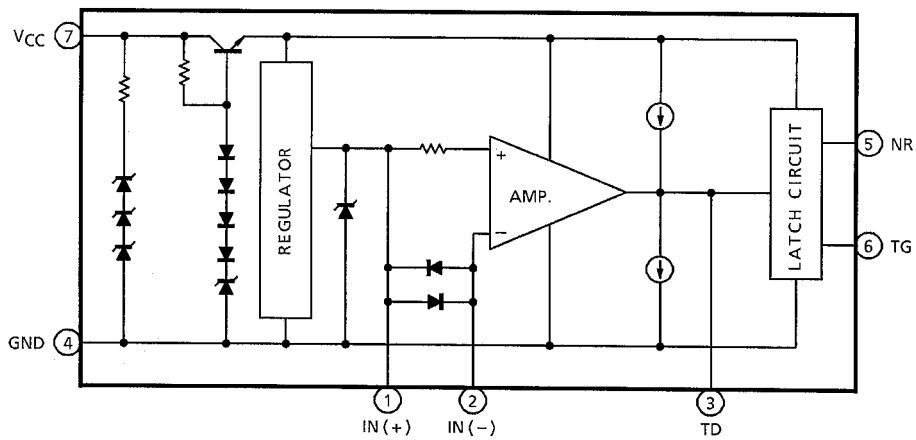
- High Sensibility : $V_{Trip} = 7mV$ (Typ.)
- Compose of Toshiba Original SIP (7Pin) so that it is possible to manufacture very small Earth Leak Breaker by using this device.
- Having High Reliability for the swing of supply voltage.
- Be possible to turn on External Thyristor Because of having Regulator Circuit.
- Having stability Trip Voltage Value.
- High Speed Rising Time.



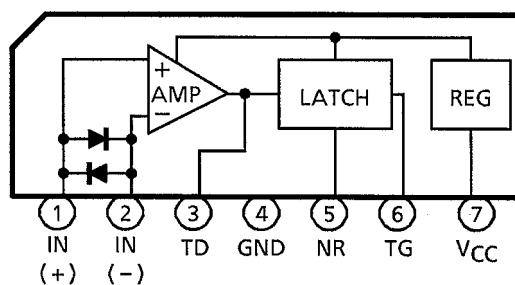
P-SIP7-2.54A

Weight: 0.7g (Typ.)

BLOCK DIAGRAM



PIN CONNECTION



MAXIMUM RATINGS (Ta = 25°C)

CHARACTERISTIC	SYMBOL	CONDITION	RATING	UNIT
Supply Current	ICC	—	10	mA
Input Current	IIM	+IN- (-IN)	250 (Note)	mA
		+IN-GND	30	
		-IN-GND	30	
Power Dissipation	PD	—	400	mW
Operating Temperature	Topr	—	-30~85	°C
Storage Temperature	Tstg	—	-55~125	°C

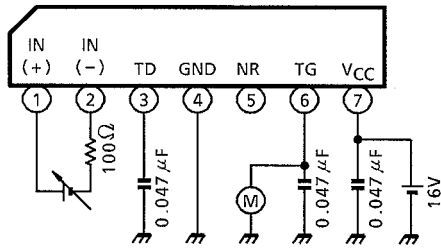
Note: In case the current between +IN and -IN, Pulse width must be less than 1ms.

ELECTRICAL CHARACTERISTICS (Ta = 25°C)

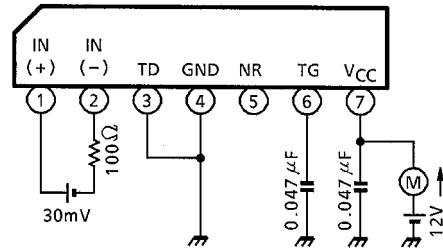
CHARACTERISTIC	SYMBOL	TEST CIR-CUIT	TEST CONDITION	MIN	TYP.	MAX	UNIT
Trip Voltage	V _{TRIP}	1	V _{CC} = 16V, Ta = -30~85°C	4	—	10	mV
Supply Current (1)	I _{CC}	2	V _{CC} = 12V (+IN) - (-IN) = 30mV	—	550	900	μA
Gate Current	I _{TGH}	3	V _{CC} = 16V, V _{TG} = 0.8V Ta = 25°C	100	—	—	μA
			V _{CC} = 16V, V _{TG} = 0.8V Ta = -30~85°C	90	—	—	
Time Current	I _{TDH}	4	V _{CC} = 16V, V _{TD} = 0V	30	—	100	μA
TD Terminal " L " Current	I _{TDL}	5	V _{CC} = 16V, V _{TD} = 0.8V (+IN) - (-IN) Short	20	—	70	μA
ON Voltage Of Internal Latch Circuit	V _{ON (SCR)}	6	V _{CC} = 16V	0.7	—	1.6	V
Output " L " Current	I _{TGL}	7	V _{CC} = 12V, V _{TG} = 0.2V Ta = -30~85°C	100	—	—	μA
Input Clamp Voltage	V _{INC}	8	V _{CC} = 12V, I _{IN} = 30mA	4.6	—	6.9	V
Differential Input Clamp Voltage	V _{DFC}	9	I _{DF} = 100mA	0.7	—	1.3	V
VCC Terminal Voltage	V _{CCM}	10	I = 10mA	22	—	30	V
Operating Supply Current (2)	I _{CC (ON)}	11	V _{CC} = 16V, V _{TG} = 0.8V Ta = -30~85°C	—	—	2.5	mA
Output " OFF " Supply Voltage	V _{CC (OFF)}	12	—	—	4.5	—	V
Operating Time	t _{ON}	13	V _{CC} = 16V (+IN) - (-IN) = 0.3V	—	1	—	ms

TEST CIRCUIT

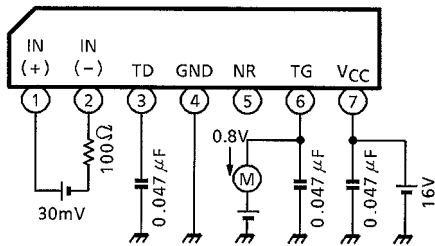
1. Trip voltage V_{TRIP}



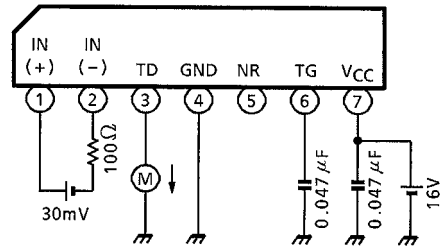
2. Supply current (1)



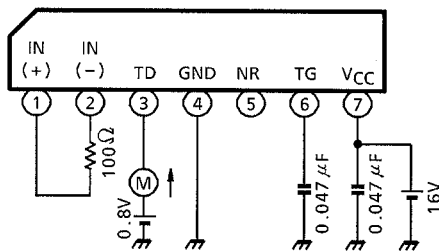
3. Gate current I_{TGH}



4. Time current I_{TDH}

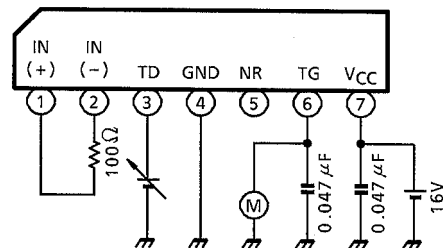


5. TD terminal "L" current I_{TDL}

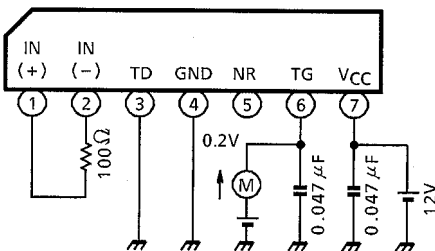


6. On voltage of internal latch circuit

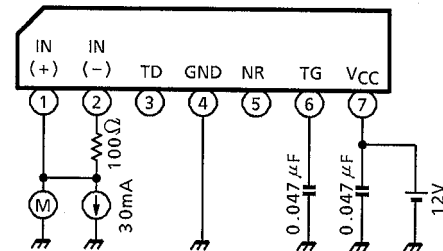
V_{ON} (SCR)



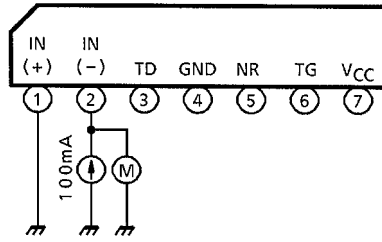
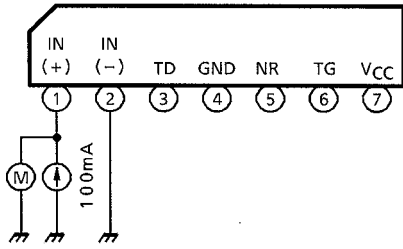
7. Output "L" current I_{TGL}



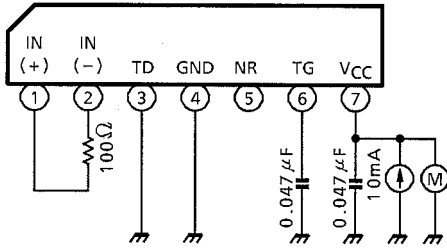
8. Input clamp voltage V_{INC}



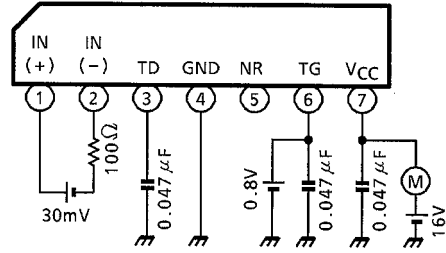
9. Differential input clamp voltage V_{DFC}



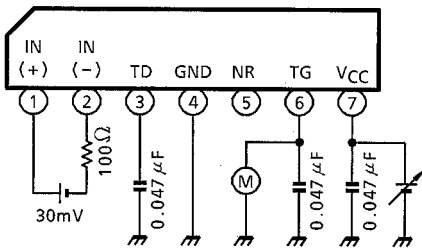
10. V_{CC} terminal voltage V_{CCM}



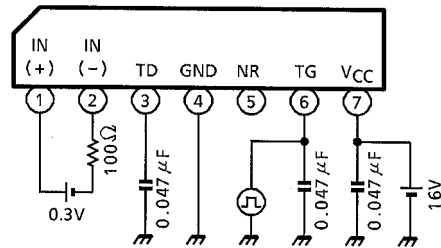
11. Operating current (2)



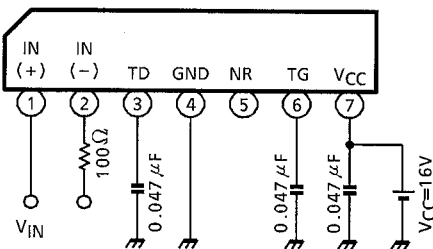
12. Latch "OFF" supply voltage V_{CC} (OFF)

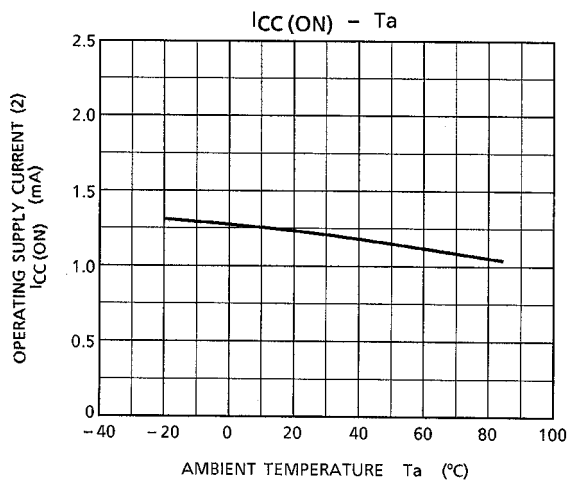
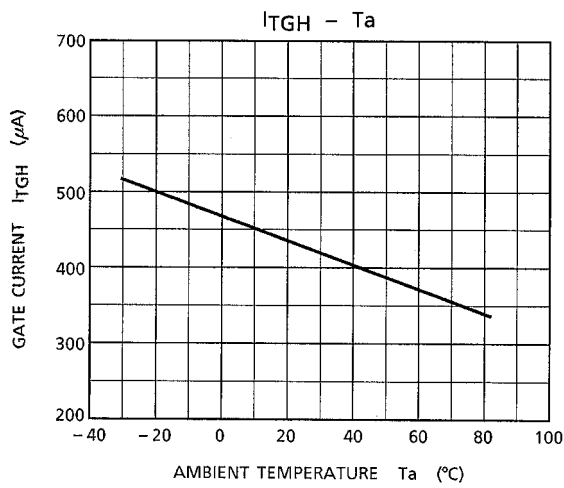
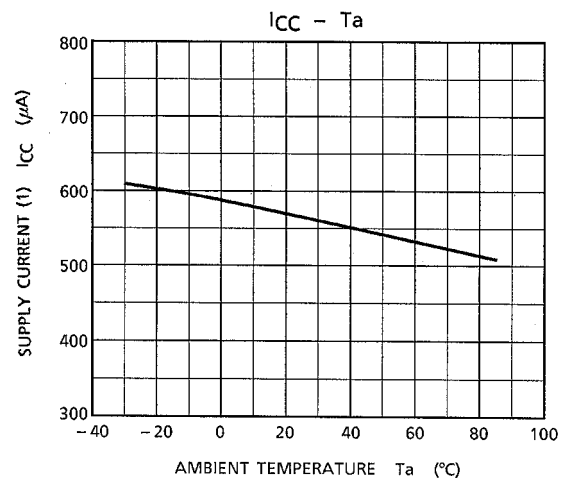
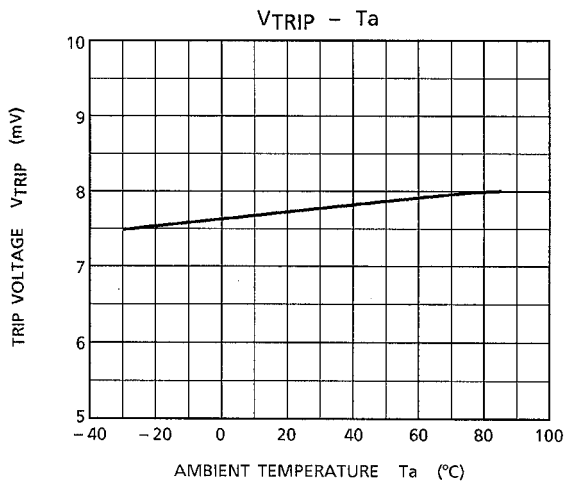


13. Operating time

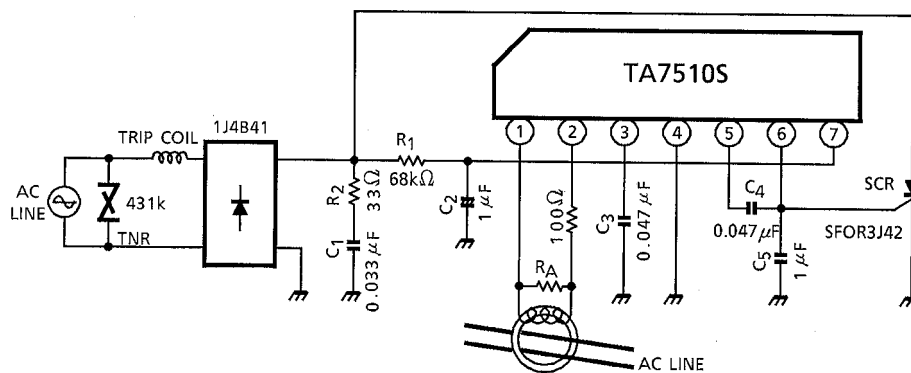


14. Latch operation





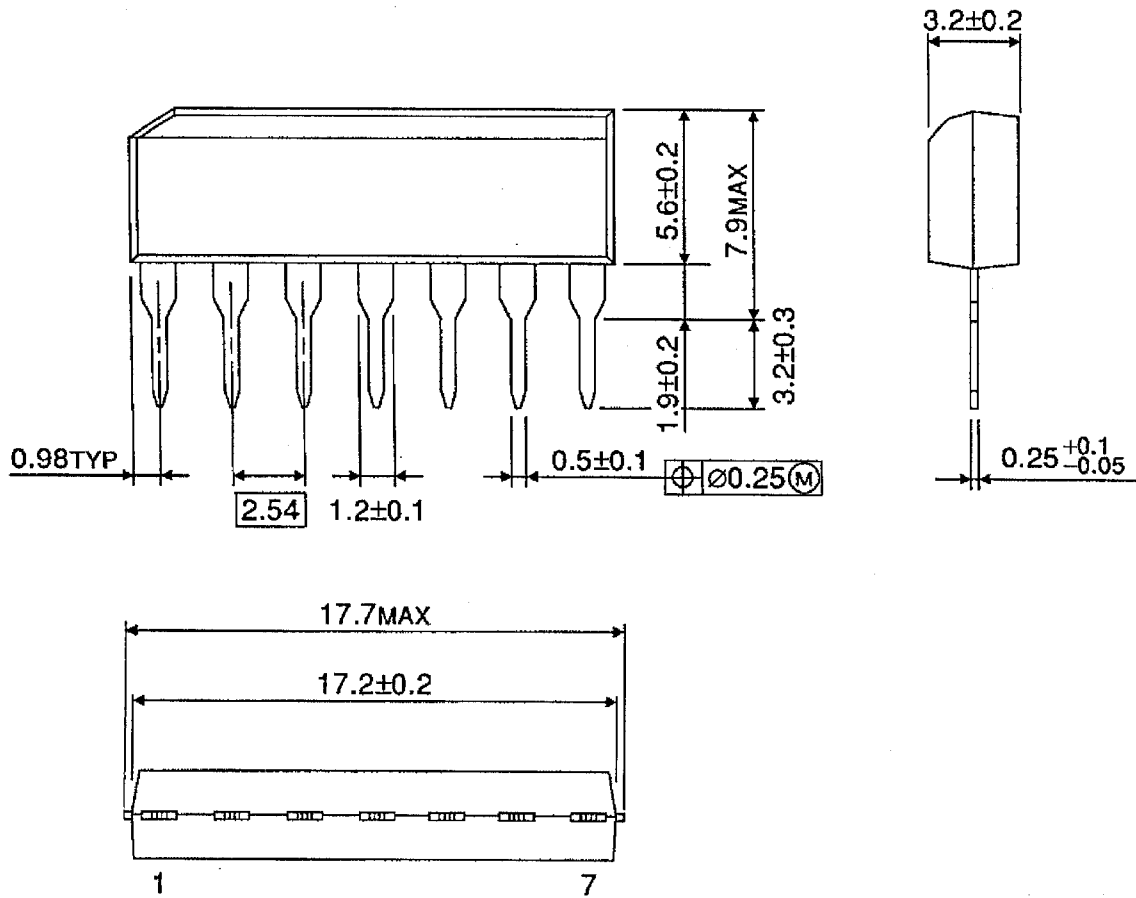
APPLICATION CIRCUIT (High speed earth leak breaker at 100V or 200V)



PACKAGE DIMENSIONS

P-SIP7-2.54A

Unit: mm



Weight: 0.7g (Typ.)

RESTRICTIONS ON PRODUCT USE

000707EAA

- TOSHIBA is continually working to improve the quality and reliability of its products. Nevertheless, semiconductor devices in general can malfunction or fail due to their inherent electrical sensitivity and vulnerability to physical stress. It is the responsibility of the buyer, when utilizing TOSHIBA products, to comply with the standards of safety in making a safe design for the entire system, and to avoid situations in which a malfunction or failure of such TOSHIBA products could cause loss of human life, bodily injury or damage to property.
In developing your designs, please ensure that TOSHIBA products are used within specified operating ranges as set forth in the most recent TOSHIBA products specifications. Also, please keep in mind the precautions and conditions set forth in the "Handling Guide for Semiconductor Devices," or "TOSHIBA Semiconductor Reliability Handbook" etc..
- The TOSHIBA products listed in this document are intended for usage in general electronics applications (computer, personal equipment, office equipment, measuring equipment, industrial robotics, domestic appliances, etc.). These TOSHIBA products are neither intended nor warranted for usage in equipment that requires extraordinarily high quality and/or reliability or a malfunction or failure of which may cause loss of human life or bodily injury ("Unintended Usage"). Unintended Usage include atomic energy control instruments, airplane or spaceship instruments, transportation instruments, traffic signal instruments, combustion control instruments, medical instruments, all types of safety devices, etc.. Unintended Usage of TOSHIBA products listed in this document shall be made at the customer's own risk.
- The information contained herein is presented only as a guide for the applications of our products. No responsibility is assumed by TOSHIBA CORPORATION for any infringements of intellectual property or other rights of the third parties which may result from its use. No license is granted by implication or otherwise under any intellectual property or other rights of TOSHIBA CORPORATION or others.
- The information contained herein is subject to change without notice.