

描述 / Descriptions

1A 表面贴装玻璃钝化整流桥，薄型 ABS/LBF 封装。
1A Surface Mount Glass Passivated Bridge Rectifier, ABS/LBF thin package.

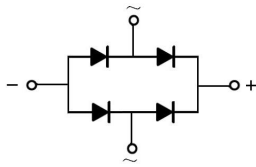
特征 / Features

玻璃钝化芯片，反向电压：100V~1000V，正向电流：1.0A，浪涌电流大，适用表面贴装。无卤产品。
Glass Passivated Chip Junction, Reverse Voltage :100 to 1000V, Forward Current: 1.0A, High Surge Current Capability, Designed for Surface Mount Application. Halogen free product.

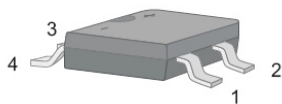
用途 / Applications

一般用途。
General purpose.

内部等效电路 / Equivalent Circuit

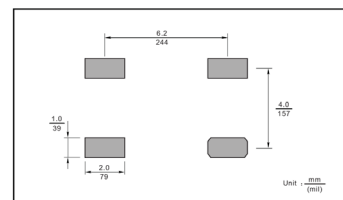


引脚排列 / Pinning



| PIN | DESCRIPTION |
|-----|----------------------|
| 1 | Input Pin (~) |
| 2 | Input Pin (~) |
| 3 | Output Anode (+) |
| 4 | Output Cathode (-) |

The recommended mounting pad size



印章代码 / Marking

见印章说明。See Marking Instructions.

极限参数 / Absolute Maximum Ratings(Ta=25°C)

| 参数 Parameter | 符号 Symbol | 数值 Rating | | | | | | 单位 Unit |
|---|-----------------|--------------|---------|---------|---------|---------|----------|------------|
| | | TB1S-10 | TB2S-10 | TB4S-10 | TB6S-10 | TB8S-10 | TB10S-10 | |
| Maximum Repetitive Peak Reverse Voltage | V_{RRM} | 100 | 200 | 400 | 600 | 800 | 1000 | V |
| Maximum RMS voltage | V_{RMS} | 70 | 140 | 280 | 420 | 560 | 700 | V |
| Maximum DC Blocking Voltage | V_{DC} | 100 | 200 | 400 | 600 | 800 | 1000 | V |
| Average Rectified Output Current at Ta = 50°C | I_o | 1.0 | | | | | | A |
| Peak Forward Surge Current 8.3 ms Single Half Sine Wave Superimposed on Rated Load (JEDEC Method) | I_{FSM} | 35 | | | | | | A |
| Typical Junction Capacitance ^(Note1) | C_j | 13 | | | | | | pF |
| Typical Thermal Resistance ^(Note2) | $R_{\theta JA}$ | 80 | | | | | | °C/W |
| | $R_{\theta JL}$ | 25 | | | | | | °C/W |
| Junction Temperature, Storage Temperature Range | T_j, T_{stg} | -55~150 | | | | | | °C |

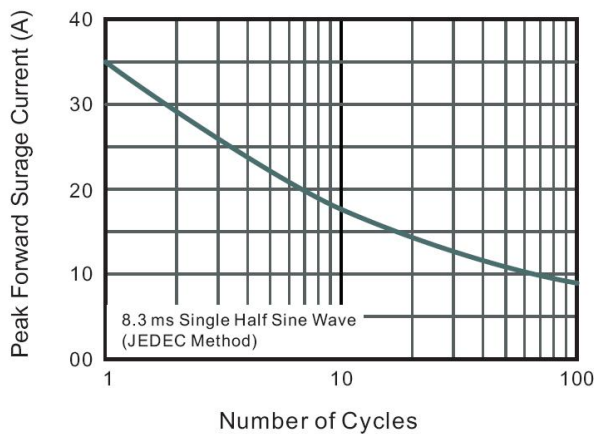
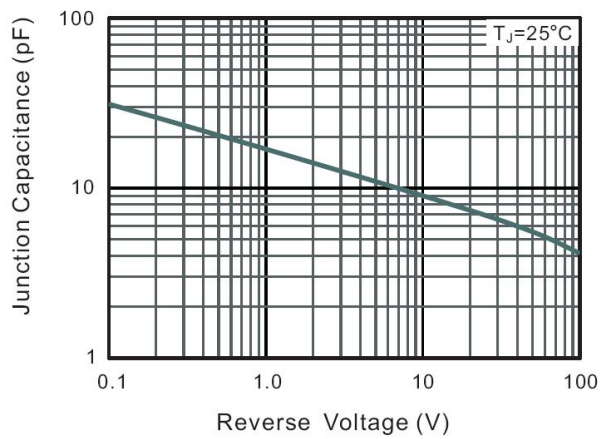
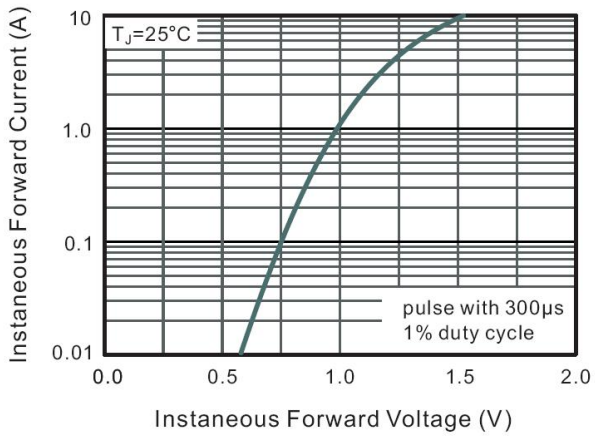
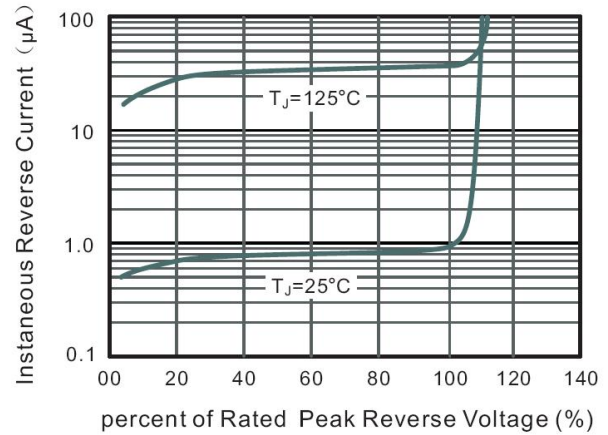
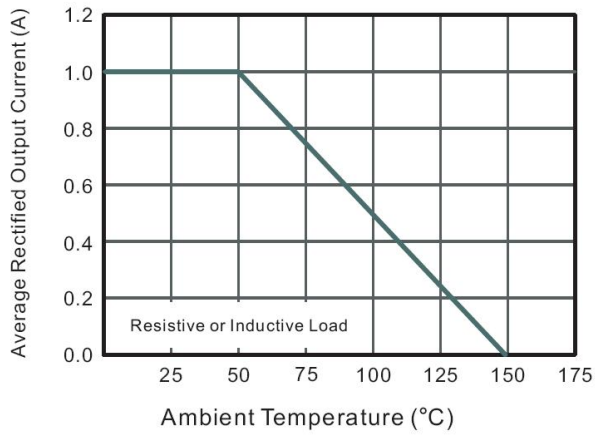
Note:

1. Measured at 1MHz and applied reverse voltage of 4 V D.C.
2. Mounted on glass epoxy PC board with 4×(5×5mm²) copper pad..

电性能参数 / Electrical Characteristics(Ta=25°C)

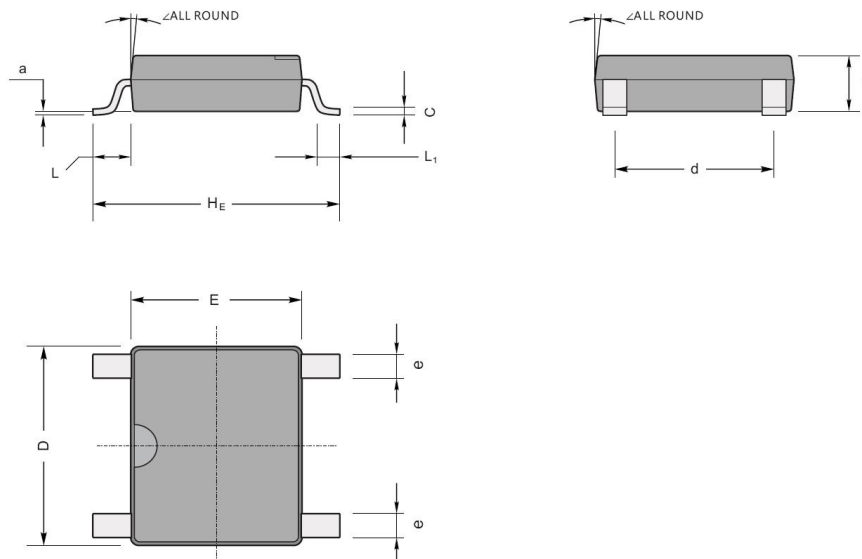
| 参数 Parameter | 符号 Symbol | 测试条件 Test Conditions | 数值 Rating | 单位 Unit |
|---|--------------|-------------------------|--------------|------------|
| Forward Voltage per element | V_F | $I_F=1.0A$ | 1.1 | V |
| Maximum DC Reverse Current at Maximum DC Blocking Voltage | I_R | $T_a=25^\circ C$ | 5.0 | μA |
| | | $T_a=100^\circ C$ | 50 | μA |
| | | $T_a=125^\circ C$ | 100 | μA |

电参数曲线图 / Electrical Characteristic Curve



外形尺寸图 / Package Dimensions

ABS/LBF



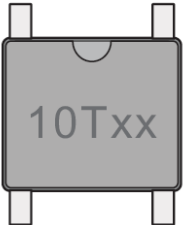
ABS/LBF mechanical data

| UNIT | | A | C | D | E | HE | d | e | L | L ₁ | a | ∠ |
|------|-----|-----|------|-----|-----|-----|-----|-----|------|----------------|-----|----|
| mm | max | 1.5 | 0.22 | 5.2 | 4.5 | 6.4 | 4.2 | 0.7 | 0.95 | 0.6 | 0.2 | 7° |
| | min | 1.3 | 0.15 | 4.9 | 4.2 | 6.0 | 3.8 | 0.5 | | | | |
| mil | max | 59 | 8.7 | 205 | 177 | 252 | 165 | 28 | 37 | 24 | 4 | |
| | min | 51 | 5.9 | 193 | 166 | 236 | 150 | 20 | | | | |

印章说明 / Marking Instructions

Marking

| Type number | Marking code |
|-------------|--------------|
| TB1S-10 | 10T1 |
| TB2S-10 | 10T2 |
| TB4S-10 | 10T4 |
| TB6S-10 | 10T6 |
| TB8S-10 | 10T8 |
| TB10S-10 | 10T10 |



The diagram shows a rectangular component with four pins. The marking code "10Txx" is printed on the top surface of the component.

回流焊温度曲线图(无铅) / Temperature Profile for IR Reflow Soldering(Pb-Free)



说明：

- 1、预热温度 $25 \sim 150^\circ\text{C}$ ，时间 $60 \sim 90\text{sec}$ ；
- 2、峰值温度 $245 \pm 5^\circ\text{C}$ ，时间持续为 $5 \pm 0.5\text{sec}$ ；
- 3、焊接制程冷却速度为 $2 \sim 10^\circ\text{C}/\text{sec}$ 。

Note:

- 1.Preheating: $25 \sim 150^\circ\text{C}$, Time: $60 \sim 90\text{sec}$.
- 2.Peak Temp.: $245 \pm 5^\circ\text{C}$, Duration: $5 \pm 0.5\text{sec}$.
3. Cooling Speed: $2 \sim 10^\circ\text{C}/\text{sec}$.

耐焊接热试验条件 / Resistance to Soldering Heat Test Conditions

温度： $260 \pm 5^\circ\text{C}$

时间： 10 ± 1 sec.

Temp.: $260 \pm 5^\circ\text{C}$

Time: 10 ± 1 sec

包装规格 / Packaging SPEC.

卷盘包装 / REEL

| Package Type 封装形式 | Units 包装数量 | | | | | Dimension 包装尺寸 (unit: mm ³) | | |
|----------------------|--------------------|-------------------------|------------------------|------------------------------|------------------------|---|-------------|-------------|
| | Units/Reel 只/卷盘 | Reels/Inner Box 卷盘/盒 | Units/Inner Box 只/盒 | Inner Boxes/Outer Box 盒/箱 | Units/Outer Box 只/箱 | Reel | Inner Box 盒 | Outer Box 箱 |
| ABS/LBF | 5000 | 2 | 10000 | 5 | 50000 | 13" × 15 | 336X336X40 | 345X345X235 |

使用说明 / Notices