

TOSHIBA BIPOLAR DIGITAL INTEGRATED CIRCUIT SILICON MONOLITHIC

TD62386AP,TD62386AF,TD62387AP TD62387AF,TD62388AP,TD62388AF

8 CH LOW INPUT ACTIVE DARLINGTON SINK DRIVER

The TD62386AP, TD62386AF, TD62387AP, TD62387AF and TD62388AP, TD62388AF are non-inverting transistor arrays, which are comprised of eight NPN darlington output stages and PNP input stages.

All units feature integral clamp diodes for switching inductive loads.

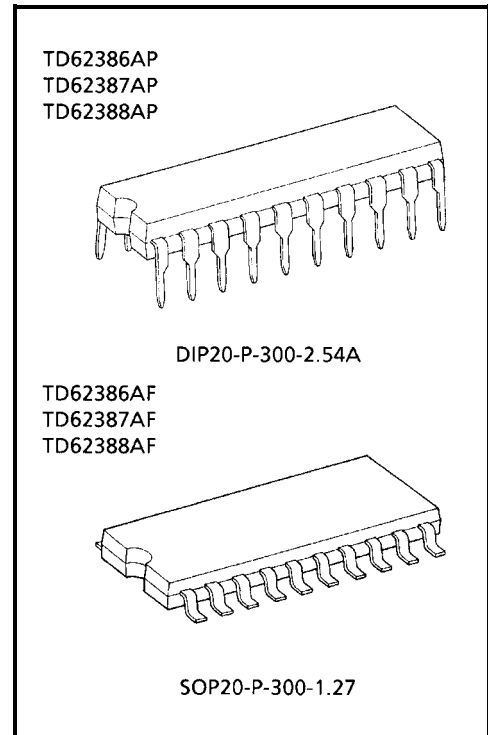
These devices are Low Level input active drivers and are suitable for operations with TTL, 5 V CMOS and 5 V Microprocessor which have sink current output drivers.

Applications include relay, hammer, lamp and LED driver.

FEATURES

- Output current (single output) 500 mA (Max)
- High sustaining voltage 50 V (Min)
- Output clamp diodes
- Low level active input
- Standard supply voltage
- Inputs compatible with TTL and 5 V CMOS
- Package type-AP: DIP-20 pin
- Package type-AF: SOP-20 pin

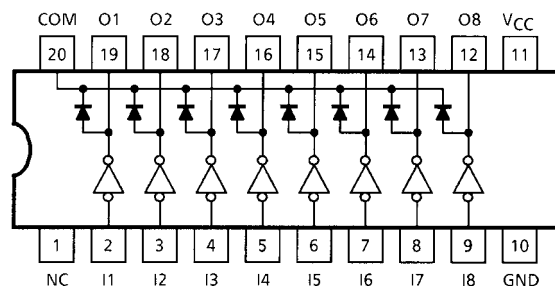
TYPE	$V_{IN(ON)}$
TD62386AP, TD62386AF	-20 V~ $V_{CC} - 2.8$ V
TD62387AP, TD62387AF	0 V~ $V_{CC} - 3.7$ V
TD62388AP, TD62388AF	



Weight

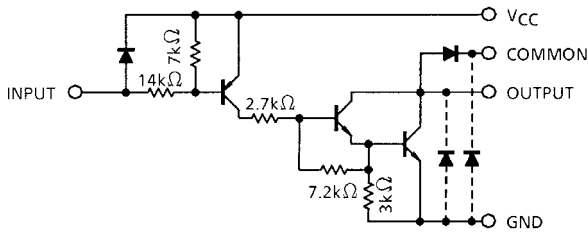
DIP20-P-300-2.54A : 2.25 g (Typ.)
SOP20-P-300-1.27 : 0.25 g (Typ.)

PIN CONNECTION (TOP VIEW)

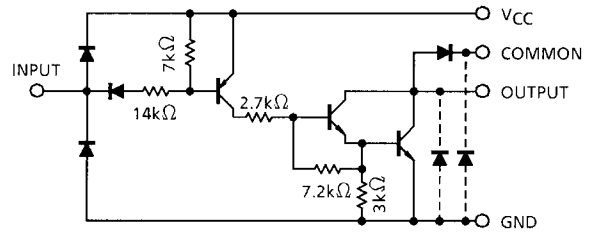


SCHEMATICS (EACH DRIVER)

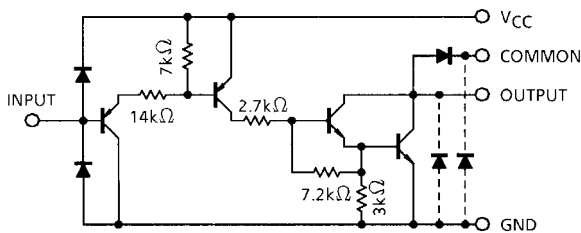
TD62386AP,TD62386AF



TD62387AP, TD62387AF



TD62388AP,TD62388AF



Note: The output parasitic diode cannot be used as clamp diodes.

MAXIMUM RATINGS

CHARACTERISTIC	SYMBOL	RATING	UNIT
Supply Voltage	V_{CC}	-0.5~7.0	V
Output Sustaining Voltage	AP	$V_{CE(SUS)}$	-0.5~50
	AF		-0.5~35
Output Current	I_{OUT}	500	mA / ch
Input Voltage	V_{IN} (Note 1)	-22~ $V_{CC} + 0.5$	V
	V_{IN} (Note 2)	-0.5~7	
Input Current	I_{IN}	-10	mA
Clamp Diode Reverse Voltage	V_R	50	V
Clamp Diode Forward Current	I_F	500	mA
Power Dissipation	AP	P_D (Note 3)	1.38
	AF		1.0 (Note 4)
Operating Temperature	T_{opr}	-40~85	°C
Storage Temperature	T_{stg}	-55~150	°C

Note 1: TD62386AP, TD62386AF only

Note 2: TD62387AP, TD62387AF, TD62388AP, TD62388AF only

Note 3: Delated above 25°C in the proportion of 11.7 mW / °C (AP-Type), 7.7 mW / °C (F, AF-Type).

Note 4: On PCB (50 × 50 × 1.6 mm Cu 40% Glass Epoxy)

RECOMMENDED OPERATING CONDITIONS (Ta = -40~85°C)

CHARACTERISTIC		SYMBOL	CONDITION	MIN	TYP.	MAX	UNIT
Supply Voltage		V _{CC}	—	4.5	5.0	5.5	V
Output Sustaining Voltage		V _{CE (SUS)}	—	0	—	50	V
Output Current		I _{OUT}	T _{pw} = 25 ms, Duty = 10% 8 Circuits	0	—	270	mA / ch
Input Voltage	TD62386AP TD62386AF	V _{IN}	—	-20	—	V _{CC}	V
	TD62387AP TD62387AF TD62388AP TD62388AF		—	0	—	5.5	
Clamp Diode Reverse Voltage		V _R	—	—	—	50	V
Clamp Diode Forward Current		I _F	—	—	—	400	mA
Power Dissipation	AP	P _D	—	—	—	0.52	W
	AF		(Note 1)	—	—	—	

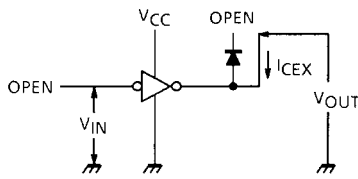
Note 1: On Glass Epoxy PCB (50 × 50 × 1.6 mm Cu 40%)

ELECTRICAL CHARACTERISTICS (Ta = 25°C)

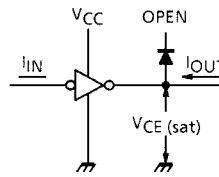
CHARACTERISTIC		SYMBOL	TEST CIR-CUIT	TEST CONDITION	MIN	TYP.	MAX	UNIT
Output Leakage Current		I _{CEX}	1	V _{CC} = 5.5 V, I _{IN} = 0 V _{OUT} = 50 V, Ta = 85°C	—	—	100	μA
Output Saturation Voltage		V _{CE (sat)}	2	V _{CC} = 4.5 V, V _{IN} = V _{IN (ON)} MAX. I _{OUT} = 350 mA	—	1.4	2.0	V
Input Current	Output On	I _{IN (ON)}	3	V _{CC} = 5.5 V, V _{IN} = 0.4 V V _{CC} = 5.5 V, V _{IN} = -20 V	—	-0.32	-0.45	mA
	Output Off	I _{IN (OFF)}	4	—	—	—	-4.0	
Input Voltage (Output on)	TD62386AP TD62386AF	V _{IN (ON)}	5	—	—	—	V _{CC} - 2.8	V
	TD62387AP TD62387AF TD62388AP TD62388AF			—	—	—	V _{CC} - 3.7	
Clamp Diode Reverse Current		I _R	6	V _R = 50 V, Ta = 25°C V _R = 50 V, Ta = 85°C	—	—	50 100	μA
Clamp Diode Forward Voltage		V _F	7	I _F = 350 mA I _F = 280 mA	—	—	2.0 1.8	
Supply Current	I _{CC (ON)}	8	8	V _{CC} = 5.5 V, V _{IN} = 0	—	17	22	mA
	I _{CC (OFF)}			V _{CC} = 5.5 V, V _{IN} = V _{CC}	—	—	—	
Turn-On Delay	t _{ON}	9	9	V _{CC} = 5 V, V _{OUT} = 50 V R _L = 125Ω, C _L = 15 pF	—	0.1	—	μs
Turn-Off Delay	t _{OFF}				—	3	—	

TEST CIRCUIT

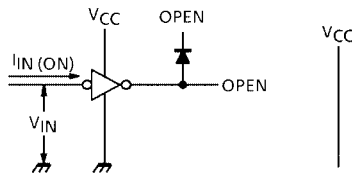
1. I_{CEX}



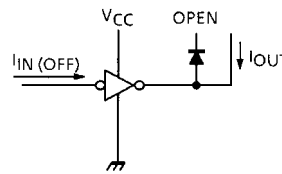
2. $V_{CE(sat)}$



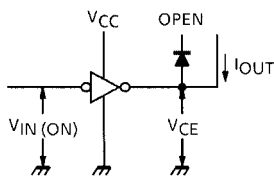
3. $I_{IN(ON)}$



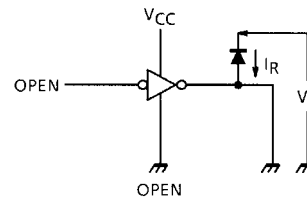
4. $I_{IN(OFF)}$



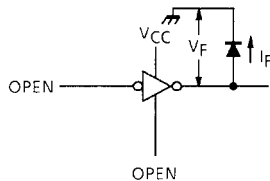
5. $V_{IN(ON)}$



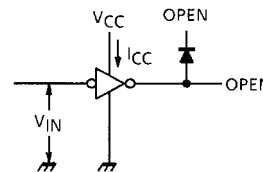
6. I_R



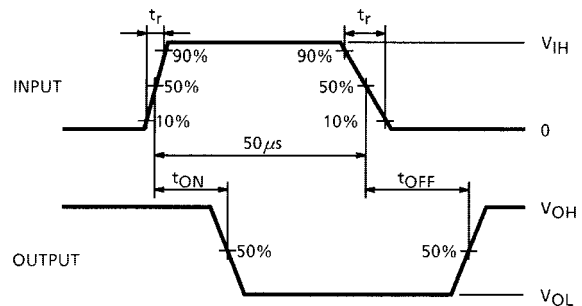
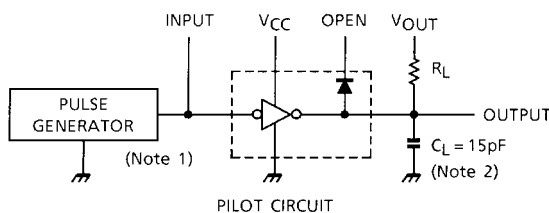
7. V_F



8. I_{CC}



9. t_{ON}, t_{OFF}



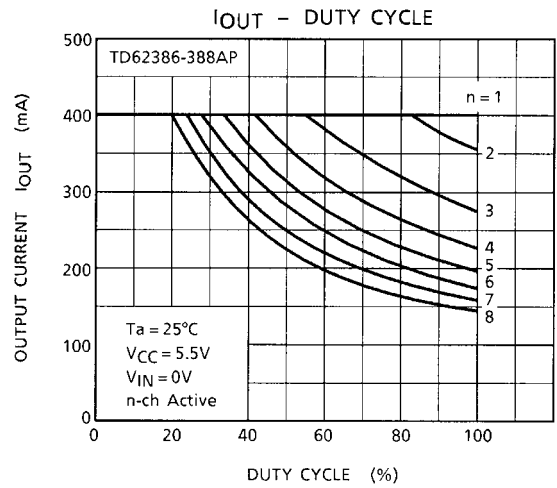
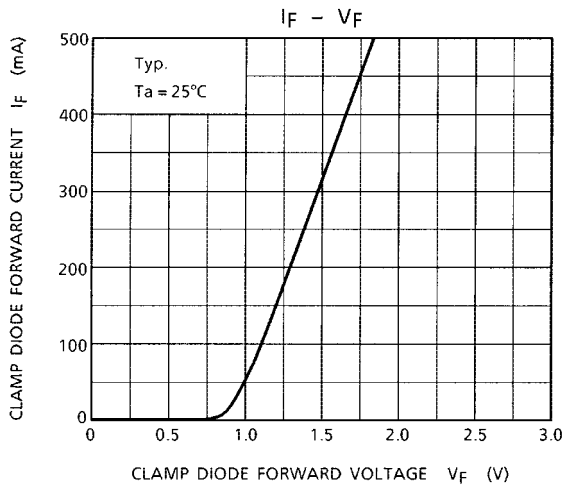
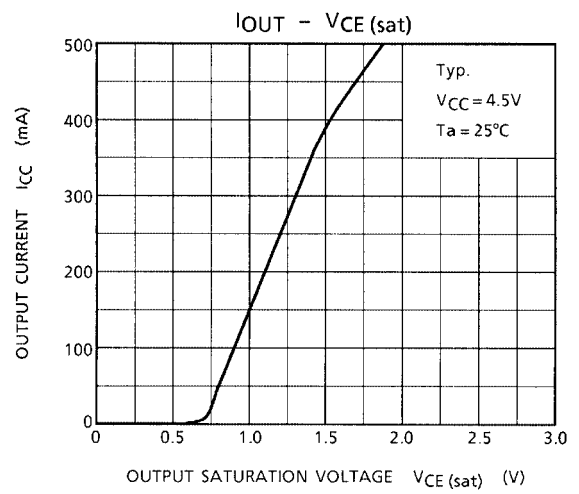
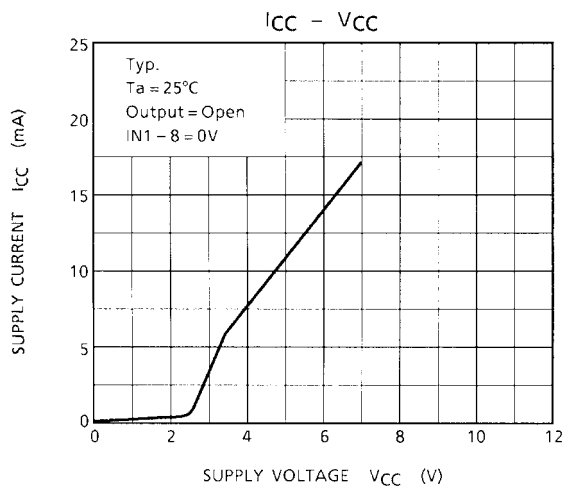
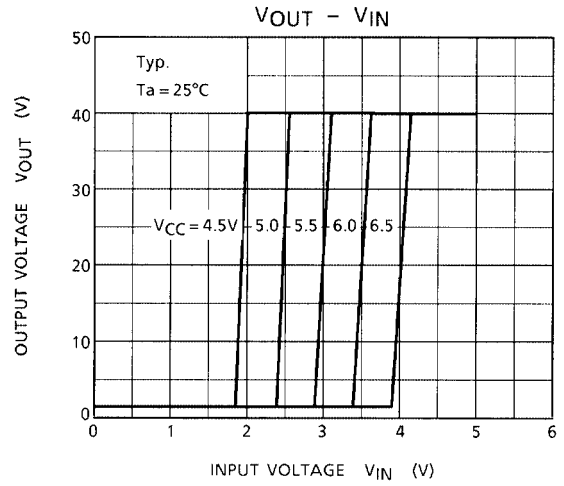
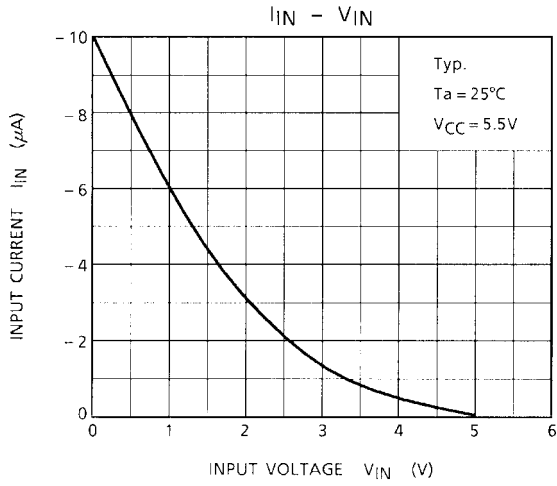
Note 1: Pulse Width $50\mu\text{s}$, Duty Cycle 10%
Output Impedance 50Ω , $t_r \leq 5\text{ns}$, $t_f \leq 10\text{ns}$

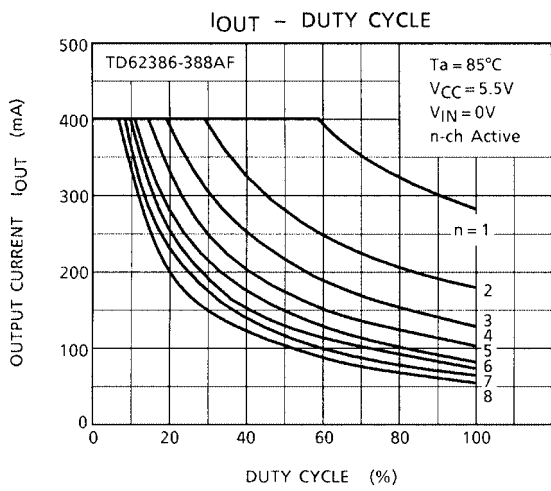
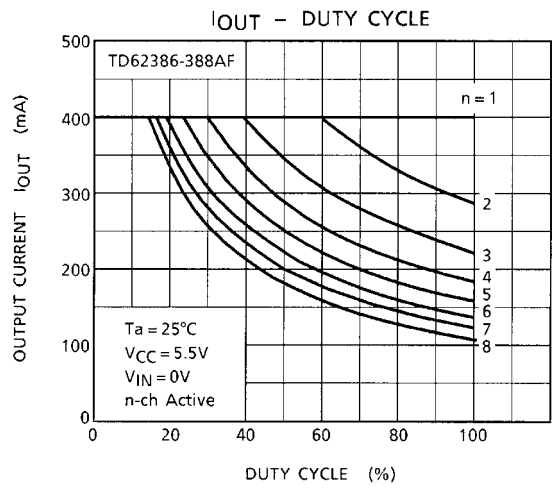
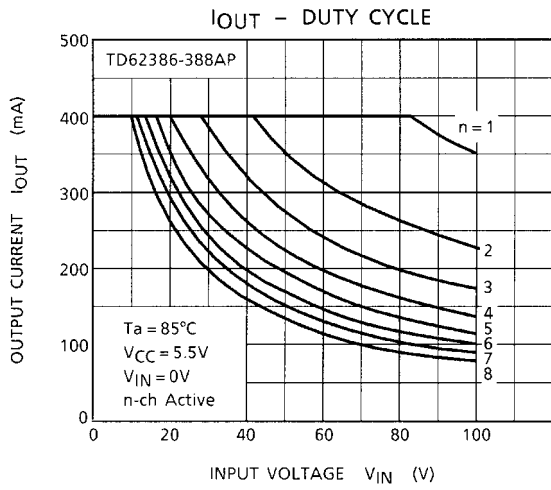
Note 2: C_L includes probe and jig capacitance.

PRECAUTIONS for USING

This IC does not integrate protection circuits such as overcurrent and overvoltage protectors. Thus, if excess current or voltage is applied to the IC, the IC may be damaged. Please design the IC so that excess current or voltage will not be applied to the IC.

Utmost care is necessary in the design of the output line, V_{CC} , COMMON and GND line since IC may be destroyed due to short-circuit between outputs, air contamination fault, or fault by improper grounding.

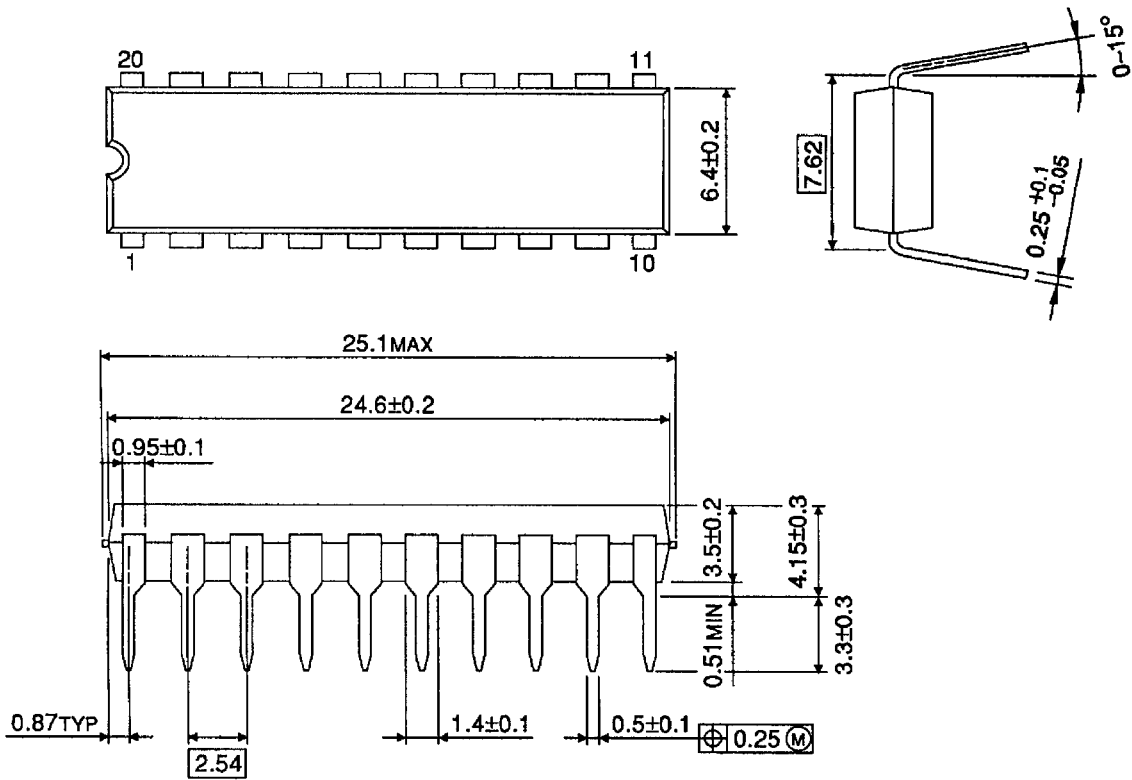




PACKAGE DIMENSIONS

DIP20-P-300-2.54A

Unit: mm

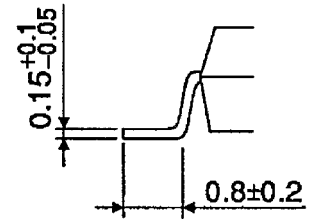
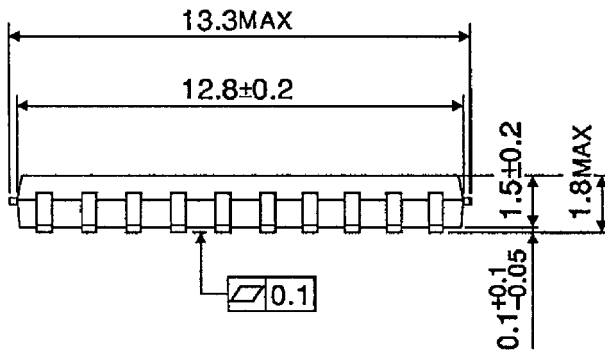
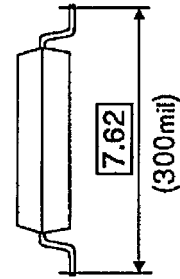
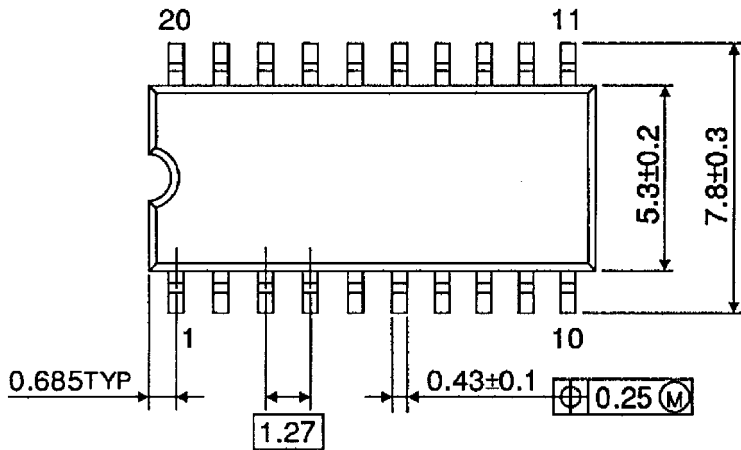


Weight: 2.25 g (Typ.)

PACKAGE DIMENSIONS

SOP20-P-300-1.27

Unit: mm



Weight: 0.25 g (Typ.)

RESTRICTIONS ON PRODUCT USE

000707EBA

- TOSHIBA is continually working to improve the quality and reliability of its products. Nevertheless, semiconductor devices in general can malfunction or fail due to their inherent electrical sensitivity and vulnerability to physical stress. It is the responsibility of the buyer, when utilizing TOSHIBA products, to comply with the standards of safety in making a safe design for the entire system, and to avoid situations in which a malfunction or failure of such TOSHIBA products could cause loss of human life, bodily injury or damage to property.
In developing your designs, please ensure that TOSHIBA products are used within specified operating ranges as set forth in the most recent TOSHIBA products specifications. Also, please keep in mind the precautions and conditions set forth in the "Handling Guide for Semiconductor Devices," or "TOSHIBA Semiconductor Reliability Handbook" etc..
- The TOSHIBA products listed in this document are intended for usage in general electronics applications (computer, personal equipment, office equipment, measuring equipment, industrial robotics, domestic appliances, etc.). These TOSHIBA products are neither intended nor warranted for usage in equipment that requires extraordinarily high quality and/or reliability or a malfunction or failure of which may cause loss of human life or bodily injury ("Unintended Usage"). Unintended Usage include atomic energy control instruments, airplane or spaceship instruments, transportation instruments, traffic signal instruments, combustion control instruments, medical instruments, all types of safety devices, etc.. Unintended Usage of TOSHIBA products listed in this document shall be made at the customer's own risk.
- The products described in this document are subject to the foreign exchange and foreign trade laws.
- The information contained herein is presented only as a guide for the applications of our products. No responsibility is assumed by TOSHIBA CORPORATION for any infringements of intellectual property or other rights of the third parties which may result from its use. No license is granted by implication or otherwise under any intellectual property or other rights of TOSHIBA CORPORATION or others.
- The information contained herein is subject to change without notice.