

TOSHIBA BIPOLAR DIGITAL INTEGRATED CIRCUIT SILICON MONOLITHIC  
**TD62501P,TD62501F,TD62502P,TD62502F,TD62503P,TD62503F,TD62504P**  
**TD62504F,TD62505P,TD62505F,TD62506P,TD62506F,TD62507P,TD62507F**

## 7CH SINGLE DRIVER

**TD62501, 502, 503, 504P / F : COMMON EMITTER**  
**TD62505, 506P / F : COMMON COLLECTOR**  
**TD62507P / F : ISOLATED**

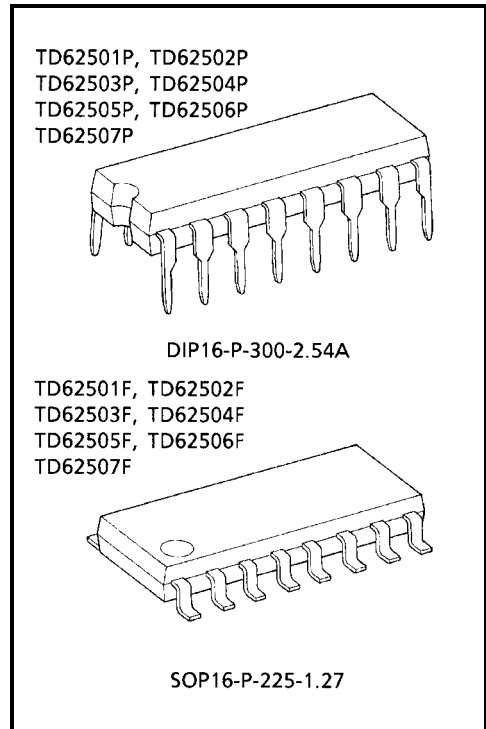
The TD62501P / F Series are comprised of seven or five NPN Transistor Arrays.

For proper operation, the substrate (SUB) must be connected to the most negative voltage.

Applications include relay, hammer, Lamp and display (LED) drivers.

## FEATURES

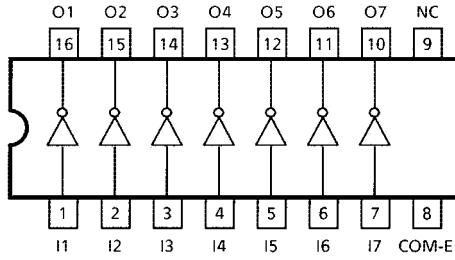
- Output Current (Single Output) 200 mA MAX.
- High Sustaining Voltage Output 35 V MIN.
- Inputs Compatible with Various Types of Logic.
- TD62501P / F, TD62505P / F and TD62507P / F: Using external resistor...General Purpose
- TD62502P / F  
: R<sub>IN</sub> = 10.5 kΩ + 7V Zener Diode...14~25 V P-MOS
- TD62503P / F, TD62506P / F  
: R<sub>IN</sub> = 2.7 kΩ...TTL, 5 V C-MOS
- TD62504P / F, : R<sub>IN</sub> = 10.5 kΩ...6~15 V P-MOS, C-MOS
- Package Type-P : DIP-16 pin
- Package Type-F : SOP-16 pin



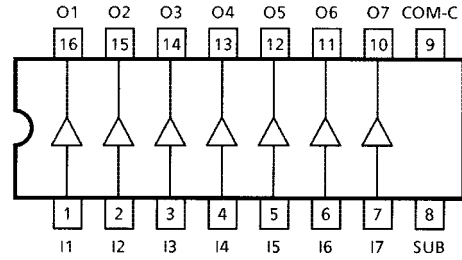
Weight  
 DIP16-P-300-2.54A : 1.11 g (Typ.)  
 SOP16-P-225-1.27 : 0.16 g (Typ.)

## PIN CONNECTION (Top view)

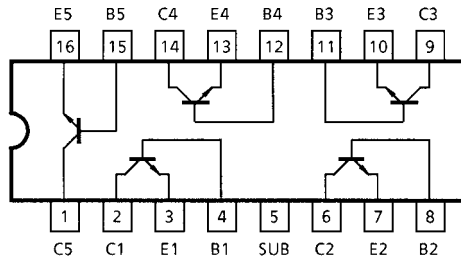
TD62501P / F, TD62502P / F  
TD62503P / F, TD62504P / F



TD62505P / F, TD62506P / F

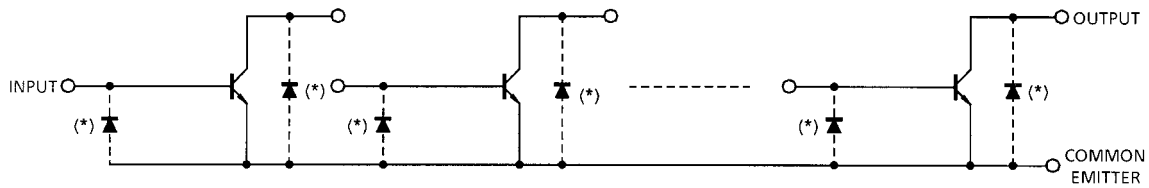


TD62507P / F

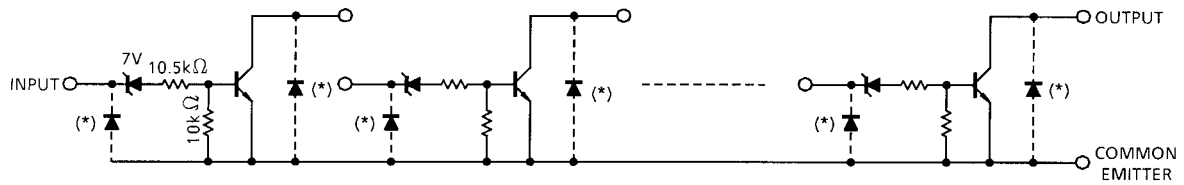


## SCHEMATICS (Each driver)

TD62501P / F

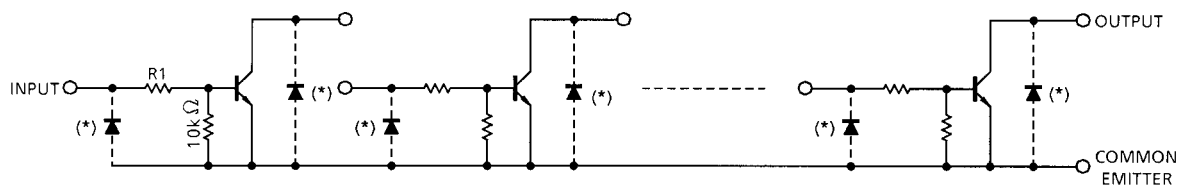


TD62502P / F



TD62503P / F

TD62504P / F

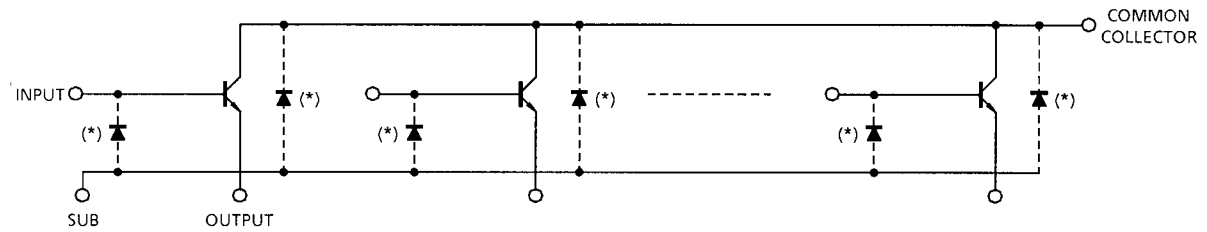


TD62503P / F R1 = 2.7 kΩ, TD62504P / F R1 = 10.5 kΩ

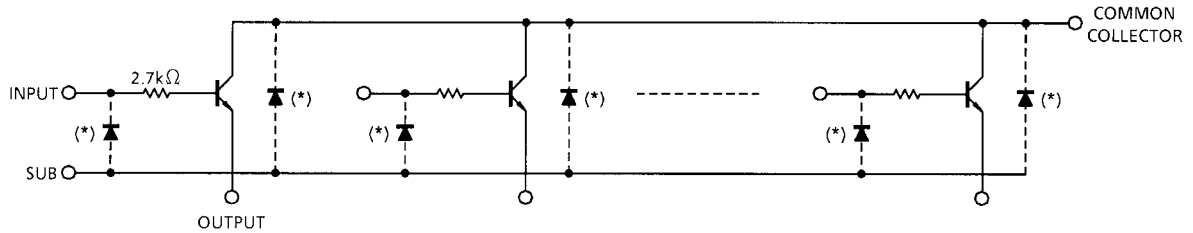
\*: Parasitic Diodes

## SCHEMATICS (Each driver)

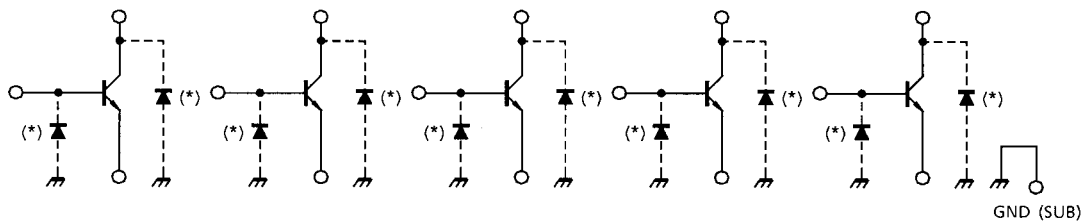
TD62505P / F



TD62506P / F



TD62507P / F



\*: Parasitic Diodes

Note: The input and output parasitic diodes cannot be used as clamp diodes.

## MAXIMUM RATINGS (Ta = 25°C Unless otherwise noted)

CHARACTERISTIC	SYMBOL	RATING	UNIT
Collector-Emitter Voltage	$V_{CEO}$	35	V
Collector-Base Voltage	$V_{CBO}$	50	V
Collector Current	$I_C$	200	mA / ch
Input Voltage	$V_{IN}$ (Note 1)	-0.5~45	V
	$V_{IN}$ (Note 2)	-0.5~30	
Input Current	$I_{IN}$ (Note 3)	25	mA
Isolation Voltage	$V_{SUB}$	35	V
Power Dissipation	P	1.0	W
	F	0.625 (Note 4)	
Operating Temperature	$T_{opr}$	-40~85	°C
Storage Temperature	$T_{stg}$	-55~150	°C

Note 1: TD62506P / F

Note 2: TD62502P / F, TD62503P / F, TD62504P / F

Note 3: TD62501P / F, TD62505P / F, TD62507P / F

Note 4: On Glass Epoxy PCB (30 × 30 × 1.6 mm, Cu 50%)

## RECOMMENDED OPERATING CONDITIONS (Ta = -40~85°C)

CHARACTERISTIC		SYMBOL	CONDITION	MIN	TYP.	MAX	UNIT
Collector-Emitter Voltage		V <sub>CEO</sub>		0	—	35	V
Collector-Base Voltage		V <sub>CBO</sub>		0	—	50	V
Collector Current		I <sub>C</sub>		0	—	150	mA / ch
Input Voltage	TD62506P / F	V <sub>IN</sub>		0	—	35	V
	TD62502P / F						
	TD62503P / F						
	TD62504P / F						
Input Current	TD62501P / F	I <sub>IN</sub>		0	—	10	mA
	TD62505P / F						
	TD62507P / F						
Power Dissipation	P	P <sub>D</sub>	On PCB (Note)	—	—	0.360	W
	F					0.325	

Note: 30 × 30 × 1.6 mm, Cu 50%

## ELECTRICAL CHARACTERISTICS (Ta = 25°C Unless otherwise noted)

CHARACTERISTIC		SYMBOL	TEST CIR-CUIT	TEST CONDITION	MIN	TYP.	MAX	UNIT
Output Leakage Current		I <sub>CEX</sub>	1	V <sub>CE</sub> = 25 V, V <sub>IN</sub> = 0	—	—	10	μA
Collector-Emitter Saturation Voltage		V <sub>CE (sat)</sub>	2	I <sub>IN</sub> = 1 mA, I <sub>C</sub> = 10 mA	—	—	0.2	V
				I <sub>IN</sub> = 3 mA, I <sub>C</sub> = 150 mA (Note 1)	—	—	0.8	
DC Current Transfer Ratio	(Note 2)	h <sub>FE</sub>	2	V <sub>CE</sub> = 10 V, I <sub>C</sub> = 10 mA	70	—	—	
	(Note 3)				50	—	—	
Input Voltage	TD62502P / F	V <sub>IN (ON)</sub>	3	I <sub>IN</sub> = 1 mA I <sub>C</sub> = 10 mA	13	17	23	V
	TD62503P / F				2.4	3.4	4.2	
	TD62504P / F				7.5	11.5	15	
Turn-On Delay	t <sub>ON</sub>	4		V <sub>OUT</sub> = 35 V, R <sub>L</sub> = 3.3 kΩ C <sub>L</sub> = 15 pF	—	50	—	ns
Turn-Off Delay	t <sub>OFF</sub>				—	200	—	

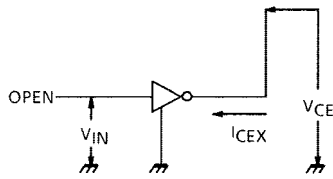
Note 1: Except TD62502P / F Only

Note 2: Only TD62501P / F, TD62505P / F, TD62506P / F, TD62507P / F

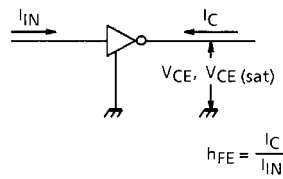
Note 3: Only TD62502P / F, TD62503P / F, TD62504P / F

## TEST CIRCUIT

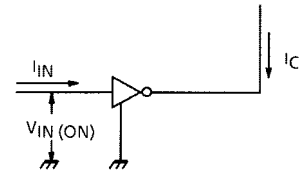
### 1. $I_{CEX}$



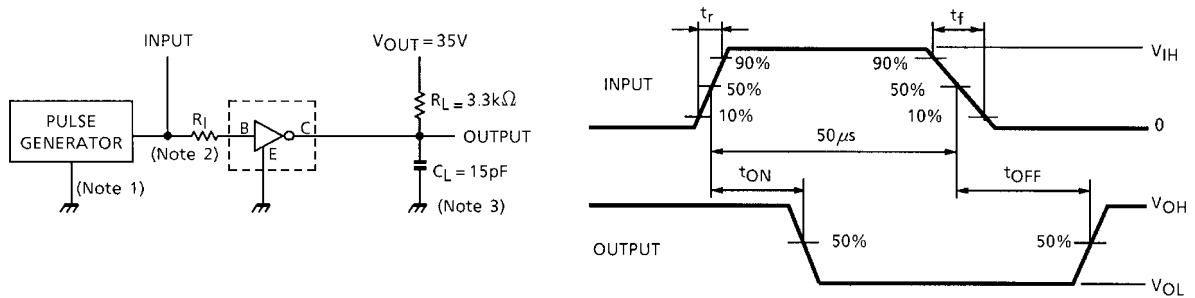
### 2. $h_{FE}$ , $V_{CE(sat)}$



### 3. $V_{IN(ON)}$



### 4. $t_{ON}$ , $t_{OFF}$



Note 1: Pulse Width 50  $\mu$ s, Duty Cycle 10%  
 Output Impedance 50  $\Omega$ ,  $t_r \leq 5$  ns,  $t_f \leq 10$  ns  
 Note 2: See below

## INPUT CONDITION

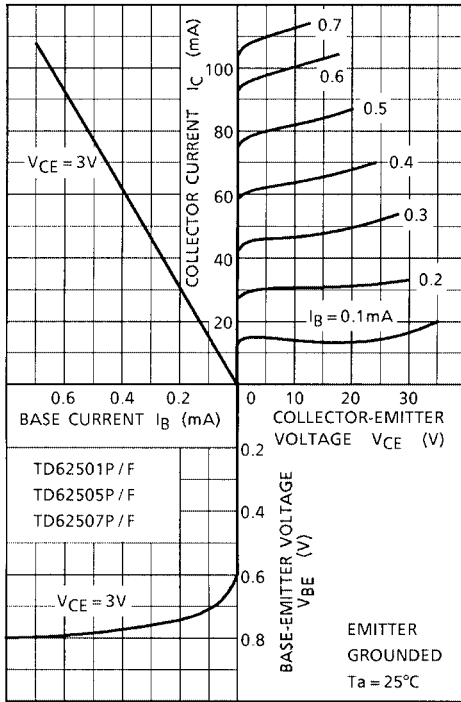
TYPE NUMBER	$R_I$	$V_{IH}$
TD62501P / F	2.7 k $\Omega$	3 V
TD62502P / F	0 $\Omega$	15 V
TD62503P / F	0 $\Omega$	3 V
TD62504P / F	0 $\Omega$	10 V
TD62505P / F	2.7 k $\Omega$	3 V
TD62506P / F	0 $\Omega$	3 V
TD62507P / F	2.7 k $\Omega$	3 V

Note 3:  $C_L$  includes probe and jig capacitance

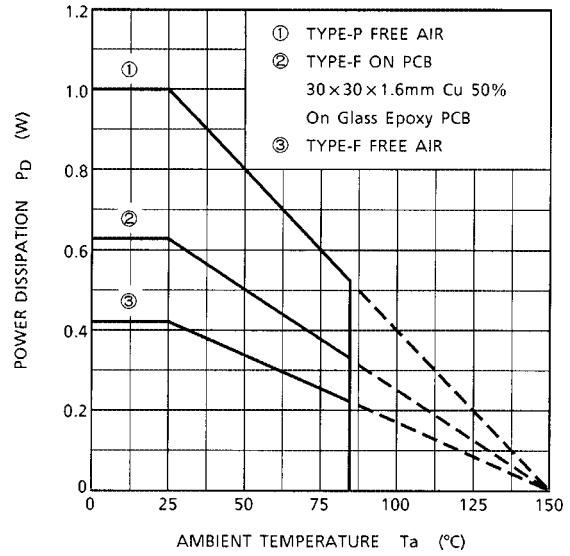
## PRECAUTIONS for USING

This IC does not integrate protection circuits such as overcurrent and overvoltage protectors. Thus, if excess current or voltage is applied to the IC, the IC may be damaged. Please design the IC so that excess current or voltage will not be applied to the IC. Utmost care is necessary in the design of the output line, VCC and GND line since IC may be destroyed due to short-circuit between outputs, air contamination fault, or fault by improper grounding.

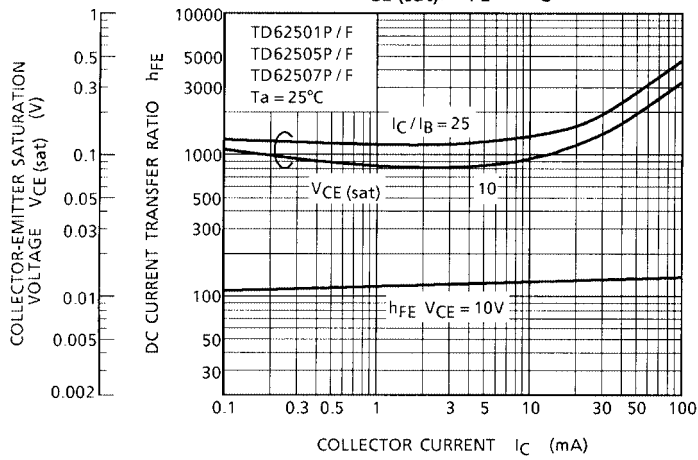
**STATIC CHARACTERISTICS**

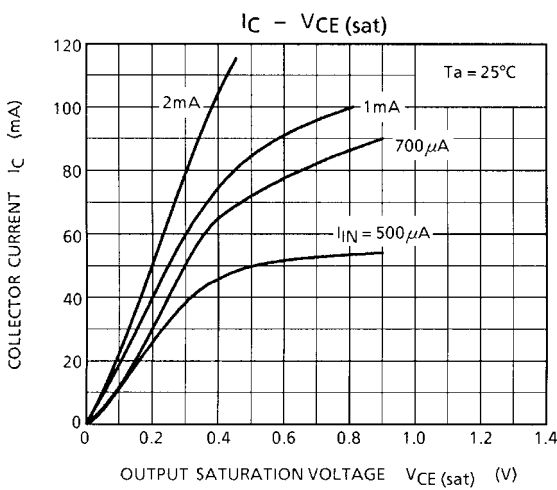
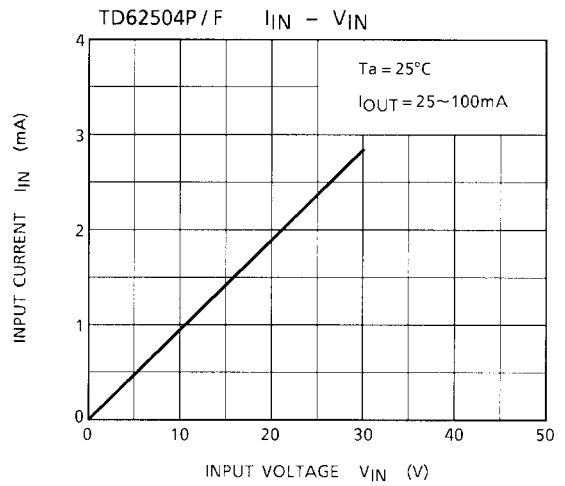
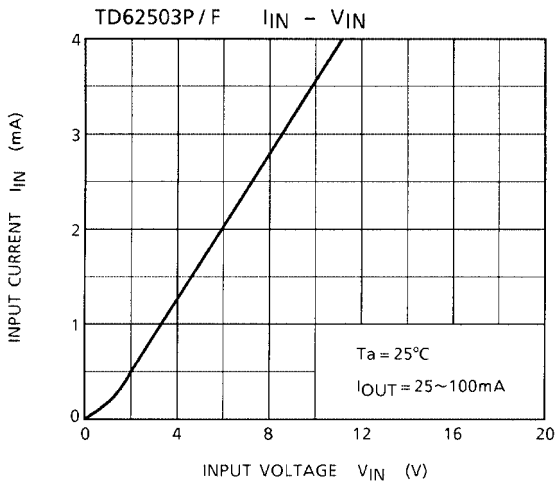
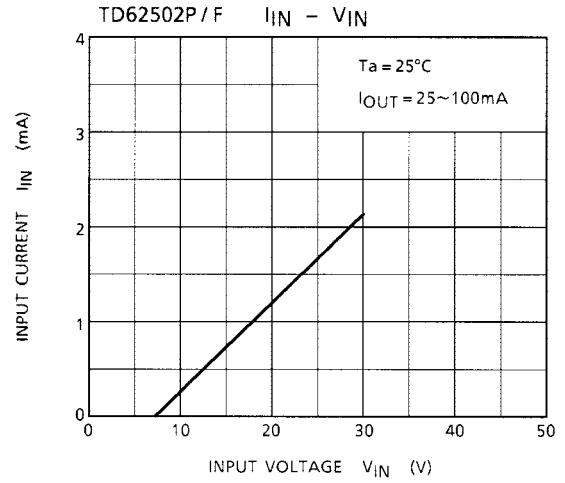
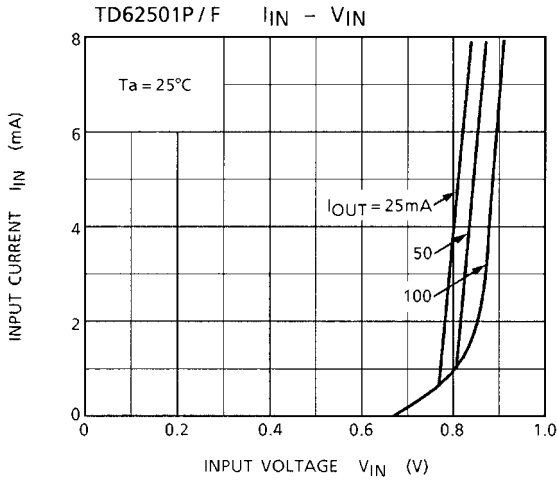


**$P_D - T_a$**



**$V_{CE} (sat), h_{FE} - I_C$**

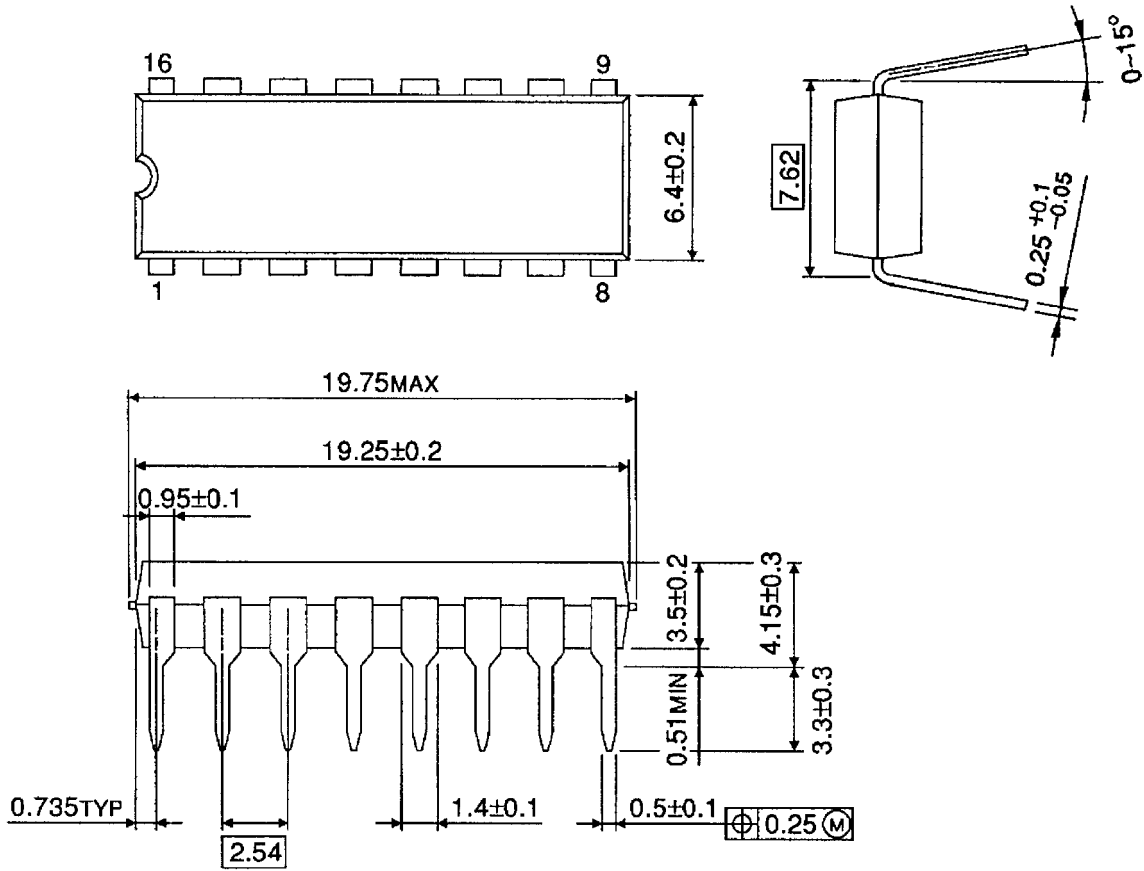




## PACKAGE DIMENSIONS

DIP16-P-300-2.54A

Unit: mm



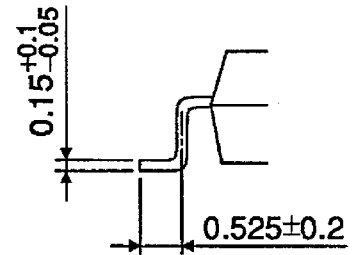
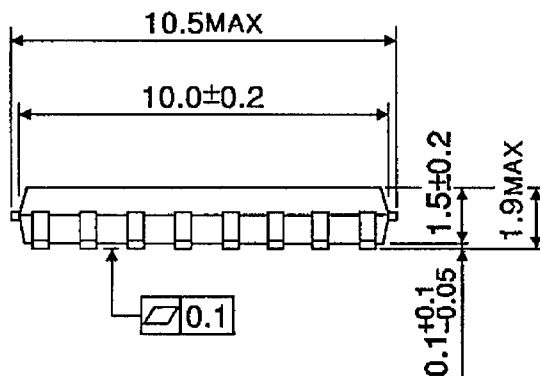
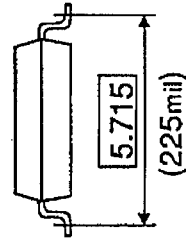
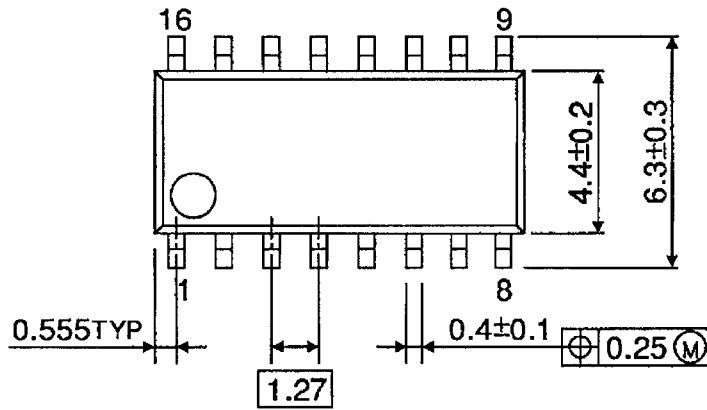
Weight: 1.11 g (Typ.)



## PACKAGE DIMENSIONS

SOP16-P-225-1.27

Unit: mm



Weight: 0.16 g (Typ.)

**RESTRICTIONS ON PRODUCT USE**

000707EBA

- TOSHIBA is continually working to improve the quality and reliability of its products. Nevertheless, semiconductor devices in general can malfunction or fail due to their inherent electrical sensitivity and vulnerability to physical stress. It is the responsibility of the buyer, when utilizing TOSHIBA products, to comply with the standards of safety in making a safe design for the entire system, and to avoid situations in which a malfunction or failure of such TOSHIBA products could cause loss of human life, bodily injury or damage to property.  
In developing your designs, please ensure that TOSHIBA products are used within specified operating ranges as set forth in the most recent TOSHIBA products specifications. Also, please keep in mind the precautions and conditions set forth in the "Handling Guide for Semiconductor Devices," or "TOSHIBA Semiconductor Reliability Handbook" etc..
- The TOSHIBA products listed in this document are intended for usage in general electronics applications (computer, personal equipment, office equipment, measuring equipment, industrial robotics, domestic appliances, etc.). These TOSHIBA products are neither intended nor warranted for usage in equipment that requires extraordinarily high quality and/or reliability or a malfunction or failure of which may cause loss of human life or bodily injury ("Unintended Usage"). Unintended Usage include atomic energy control instruments, airplane or spaceship instruments, transportation instruments, traffic signal instruments, combustion control instruments, medical instruments, all types of safety devices, etc.. Unintended Usage of TOSHIBA products listed in this document shall be made at the customer's own risk.
- The products described in this document are subject to the foreign exchange and foreign trade laws.
- The information contained herein is presented only as a guide for the applications of our products. No responsibility is assumed by TOSHIBA CORPORATION for any infringements of intellectual property or other rights of the third parties which may result from its use. No license is granted by implication or otherwise under any intellectual property or other rights of TOSHIBA CORPORATION or others.
- The information contained herein is subject to change without notice.