

10 Gigabit Ethernet Transformer TE4001

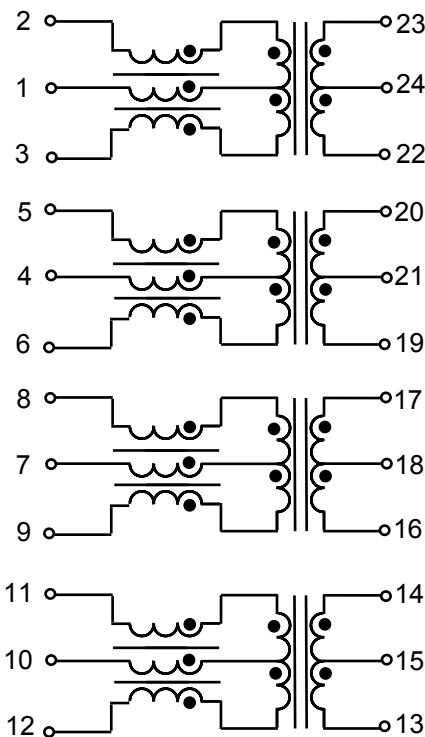
- Optimized for leading IC manufacturers per IEEE 802.3 10Gb Standard
- RSH 260°C for 10 seconds with reflow rating of 245°C
- Operating Temperature: 0°C - 70°C

ELECTRICAL SPECIFICATIONS @ 25 C

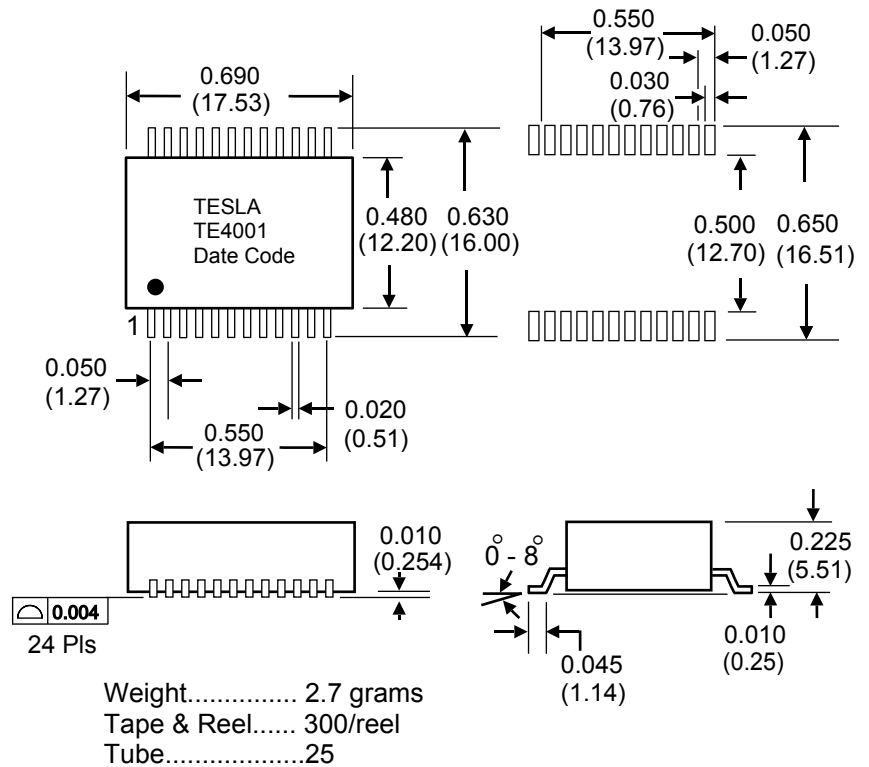
Insertion Loss (dB Max.)		Return Loss (dB Min.)		Common to Differential Mode Rejection (dB Min.)		*Crosstalk (dB Min.)		Isolation
0.1 kHz	1-500 MHz	1- 40 MHz	40 - 500 MHz	1 - 250 MHz	250 - 500 MHz	1-100 MHz	100-500 MHz	Vrms Min.
- 3	-1	- 18	- 17+ 10*log(f/40)	- 30	- 22	- 40	- 30	1500

* Crosstalk: Between adjacent channels

SCHEMATIC



MECHANICAL



Unless otherwise specified dimensions are in inches/(mm) ± 0.010/(0.25)