



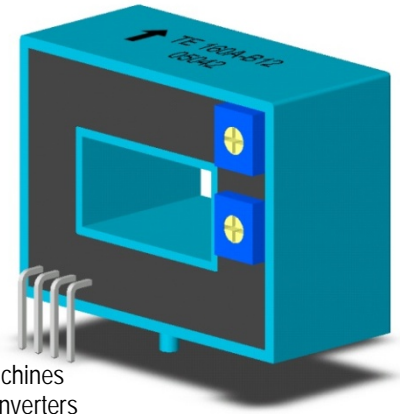
TE 100A~600A-B12

Features

- ◆ Highly reliable Hall Effect device
- ◆ Compact and light weight
- ◆ Fast response time
- ◆ Excellent linearity of the output voltage over a wide input range
- ◆ Excellent frequency response (> 50 kHz)
- ◆ Low power consumption (12 mA nominal)
- ◆ Capable of measuring both DC and AC, both pulsed and mixed
- ◆ High isolation voltage between the measuring circuit and the current-carrying conductor (AC2.5KV)
- ◆ Extended operating temperature range
- ◆ Flame-Retardant plastic case and silicone encapsulate, using UL classified materials, ensures protection against environmental contaminants and vibration over a wide temperature and humidity range

Applications

- ◆ UPS systems
- ◆ Industrial robots
- ◆ NC tooling machines
- ◆ Elevator controllers
- ◆ Process control devices
- ◆ AC and DC servo systems
- ◆ Motor speed controller
- ◆ Electrical vehicle controllers
- ◆ Inverter-controlled welding machines
- ◆ General and special purpose inverters
- ◆ Power supply for laser processing machines
- ◆ Controller for traction equipment e.g. electric trains
- ◆ Other automatic control systems



Specifications

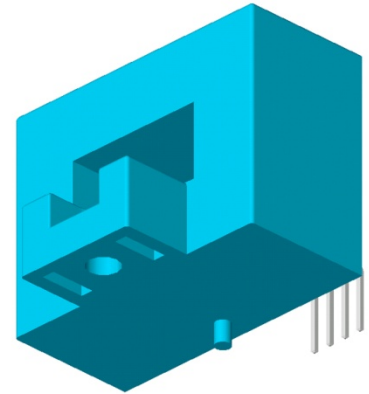
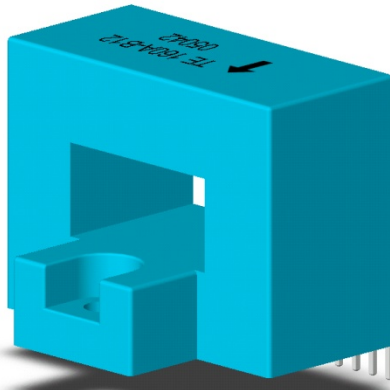
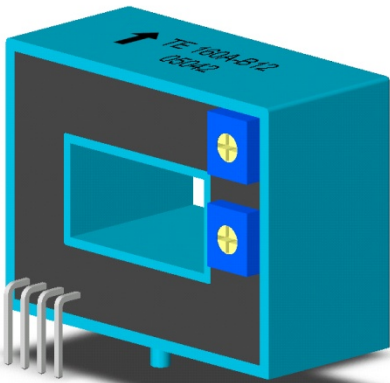
Parameter	Symbol	Unit	TE 100A -B12	TE 150A -B12	TE 160A -B12	TE 200A -B12	TE 220A -B12	TE 250A -B12	TE 300A -B12	TE 400A -B12	TE 500A -B12	TE 600A -B12
Nominal Input Current	I_{fn}	Arms	100	150	160	200	220	250	300	400	500	600
Linear Range	I_{fs}	Arms	105	157	168	210	231	262	315	420	525	630
Nominal Output Voltage	V_{hn}	V	7.07 Vrms(10Vdc peak)±1% at $I_f=I_{fn}$ ($R_L=10k\Omega$)									
Offset Voltage	V_{os}	mV	Within ±35 mV @ $I_f=0$, $T_a=25^\circ C$									
Output Resistance	R_{OUT}	Ω	<100 Ω									
Hysteresis Error	V_{oh}	mV	Within ±15 mV @ $I_f=I_{fn} \rightarrow 0$									
Supply Voltage	V_{CC}/V_{EE}	V	±12V ±5%									
Linearity	ρ	%	Within ±1% of I_{fn}									
Consumption Current	I_{CC}	mA	±12 mA nominal, ±15 mA max									
di/dt accurately followed	dI_f/dt	A/μsec	>50 A/μsec									
Response Time (90% V_{hn})	T_r	μsec	5 μsec max. @ $dI_f/dt = I_{fn}/\mu sec$									
Frequency bandwidth (-3dB)	f_{BW}	Hz	DC to 50kHz									
Thermal Drift of Output	-	%/°C	Within ±0.05 %/°C @ I_{fn}									
Thermal Drift of Zero Current Offset	-	mV/°C	Within ±1.0 mV/°C @ I_{fn}									
Dielectric Strength	-	V	AC2.5KV X 60 sec									
Isolation Resistance @ 1000 VDC	R_{IS}	M Ω	>1000 M Ω									
Operating Temperature	T_a	°C	-15°C to 80°C									
Storage Temperature	T_s	°C	-20°C to 85°C									
Mass	W	g	50g									



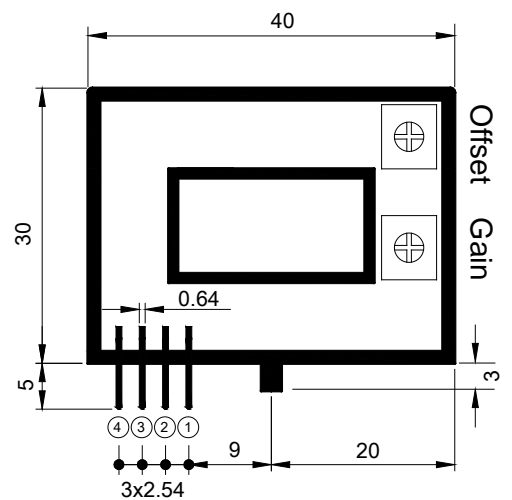
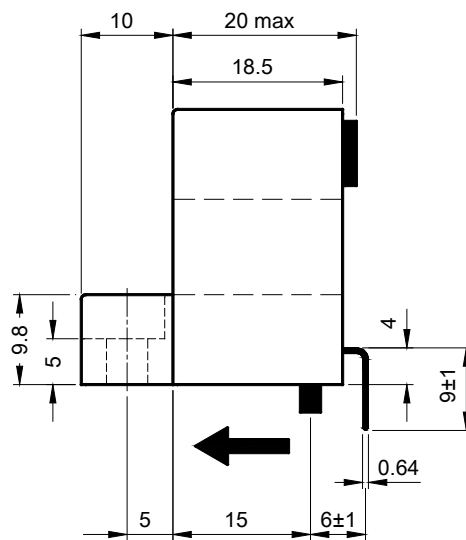
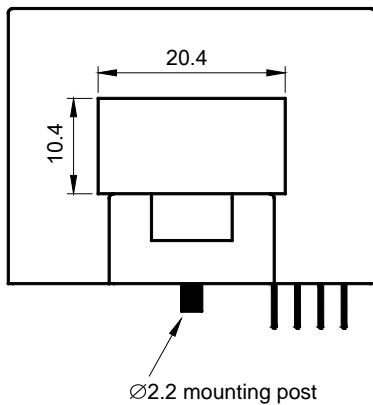
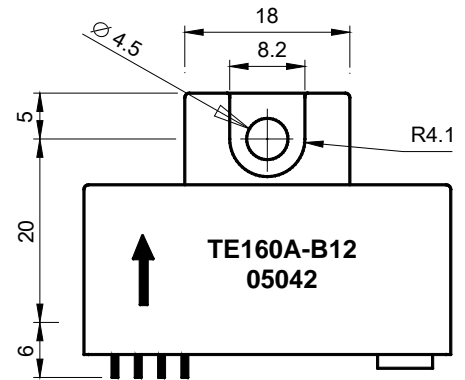


Topstek Current Transducers TE100A .. TE600A-B12

Appearance, dimensions and pin identification
 All dimensions in mm ± 0.5 , holes $-0, +0.2$ except otherwise noted.



Pin Assignment	
①	+12V
②	-12V
③	Vout
④	0V



← Positive current flow direction

