

10/100 PC CARD MAGNETIC MODULE

MODEL NO.: TH12010S1

FEATURE:

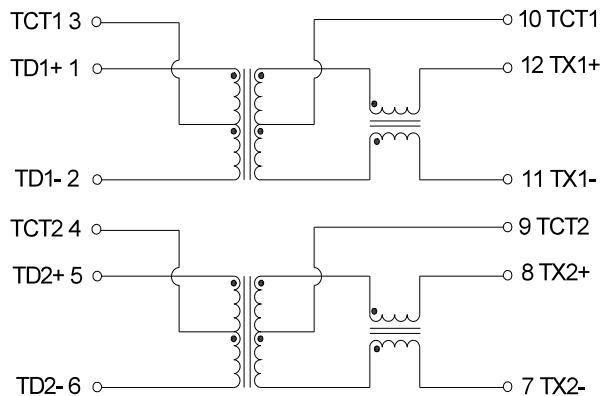
RoHS Compliant
 RoHS peak solder rating 260°C / 3~5Sec
 Designed to meet IR requirement
 Meets IEEE802.3 Baseline Wander Compensation specification

SPECIFICATIONS:@ 25°C

Operating Temperature : -10°C to +85°C
 OCL : 350uH Min.
 DCR (1-2 & 5-6 pin) : 1.0 Ω Max
 DCR (7-8 & 11-12 pin) : 1.5 Ω Max.
 Cw/w : 25 pF Max.
 HIPOT : 1500 Vrms

Turns Ratio (±5%)	Insertion Loss MHz (dB MIN)	Return Loss MHz (dB MIN)		Common Mode Rejection Ratio MHz (dB MIN .)		Cross Talk MHz (dB MIN)	
TX/RX	0.1~125	1~40	40~100	2	30~200	1	10~100
1CT:1CT	-1.1	-16	$-10+20*\log_{10}(f/80\text{MHz})$	-42	$-15+20*\log_{10}(f/200\text{MHz})$	-50	$-50+22*\log_{10}(f/10\text{MHz})$

SCHEMATIC:



DIMENSION: mm ,TOLERANCE: (±0.25)

