

Applications

- VHF and UHF power amplifier

Features

- High power gain

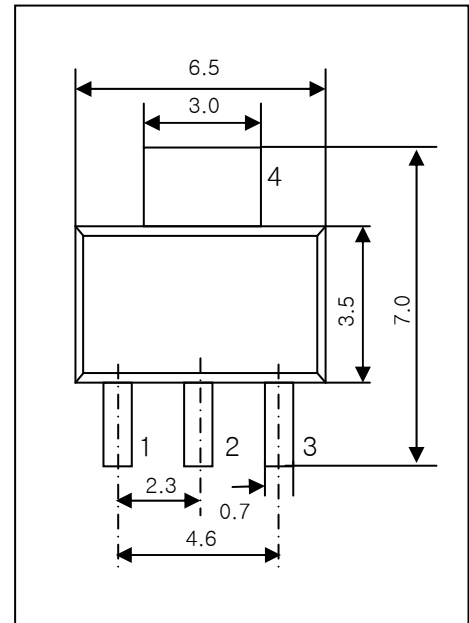
$G_P = 14 \text{ dB}$ at $V_{CE} = 6 \text{ V}$, $I_C = 400 \text{ mA}$, $f = 465 \text{ MHz}$

- High power

$P_{OUT} = 35 \text{ dBm}(3\text{W})$ at $V_{CE} = 6 \text{ V}$, $I_{CQ} = 50 \text{ mA}$, $f = 465 \text{ MHz}$

SOT-223

Unit in mm



Pin Configuration

- 1. Base
- 2. Emitter
- 3. Collector
- 4. Emitter

Absolute Maximum Ratings ($T_A = 25 \text{ }^\circ\text{C}$)

Parameter	Symbol	Ratings	Unit
Collector to Base Breakdown Voltage	BV_{CBO}	17	V
Collector to Emitter Breakdown Voltage	BV_{CEO}	12	V
Emitter to Base Breakdown Voltage	BV_{EBO}	1.5	V
Collector Current	I_C	1	A
Total Power Dissipation	P_{tot}	3	W
Junction Temperature	T_j	150	$^\circ\text{C}$
Storage Temperature	T_{stg}	-65 ~ 150	$^\circ\text{C}$

THN6701B

Thermal Characteristics

Symbol	Parameter	Value	Unit
$R_{th\ j-a}$	Thermal Resistance from Junction to Ambient	40	K/W

Electrical Characteristics ($T_A = 25\text{ }^\circ\text{C}$)

Parameter	Symbol	Test Conditions	Min.	Typ.	Max.	Unit
Collector Cut-off Current	I_{CBO}	$V_{CB} = 15\text{ V}, I_E = 0\text{ mA}$	-	-	1.0	μA
	I_{CEO}	$V_{CE} = 11\text{ V}, I_B = 0\text{ mA}$	-	-	5.0	μA
Emitter Cut-off Current	I_{EBO}	$V_{EB} = 1.0\text{ V}, I_C = 0\text{ mA}$	-	-	1.0	μA
DC Current Gain	h_{FE}	$V_{CE} = 6\text{ V}, I_C = 200\text{ mA}$	20	-	200	
Reverse Transfer Capacitance	C_{re}	$V_{CB} = 6\text{ V}, I_E = 0\text{ mA}, f = 1\text{ MHz}$	-	4.5	-	pF
Output Power	P_{OUT}	$V_{CE} = 6\text{ V}, I_{CQ} = 50\text{ mA}, f = 465\text{ MHz}, P_{IN} = 25\text{ dBm}$	-	35	-	dBm
Power Gain	G_P		-	10	-	dB
Power Added Efficiency	PAE		-	60	-	%

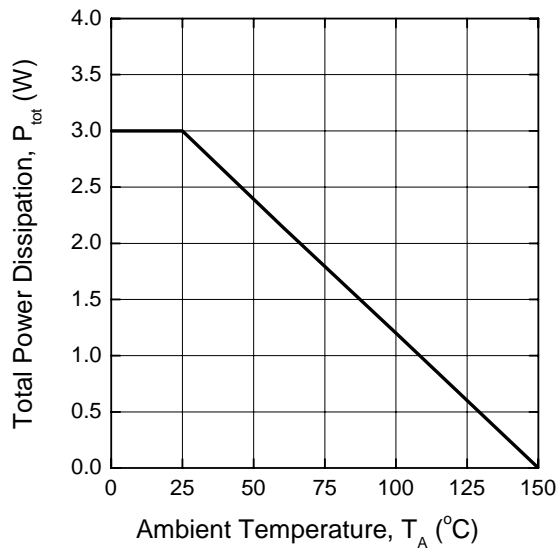
h_{FE} Classification

Marking	R6701	R6701 \cdot
h_{FE} Value	20 - 100	80 - 200

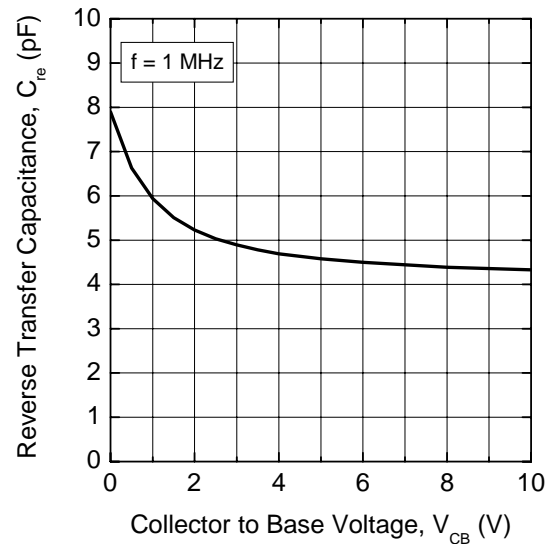
THN6701B

□ **Typical Characteristics** ($T_A = 25\text{ }^\circ\text{C}$, unless otherwise specified)

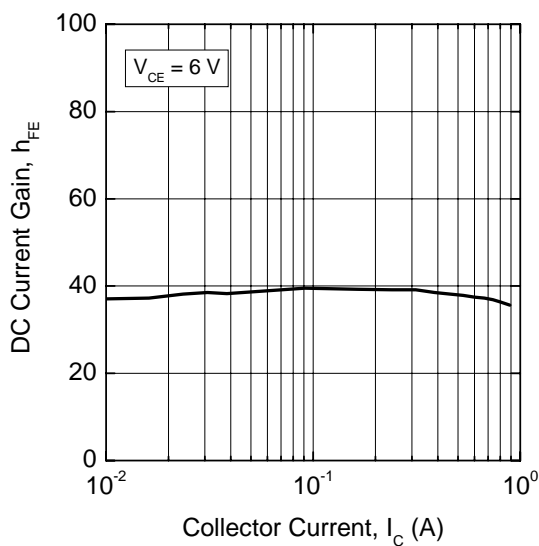
Total Power Dissipation vs. Ambient Temperature



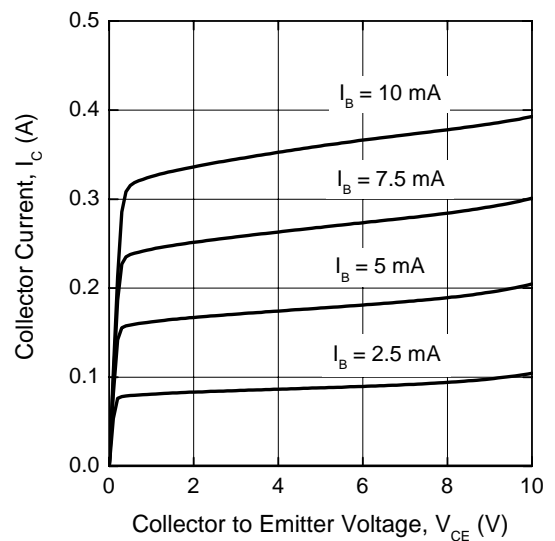
Reverse Transfer Capacitance vs. Collector to Base Voltage



DC Current Gain vs. Collector Current



Collector Current vs. Collector to Emitter Voltage



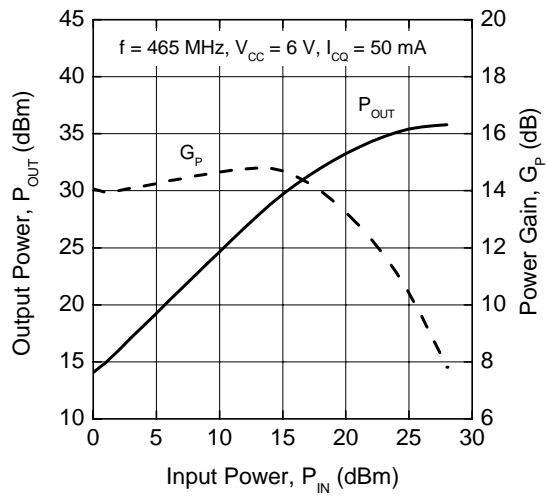
THN6701B

□ Application Information

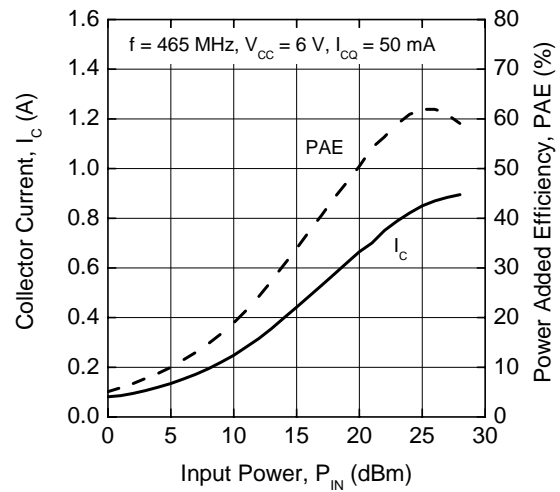
RF performance at $T_S \leq 60\text{ }^\circ\text{C}$ in common emitter configuration

Operation Mode	f (MHz)	V_{CE} (V)	P_{OUT} (dBm)	G_P (dB)	PAE (%)
CW, class-AB	465	6	35	≥ 10	60

Output Power or Power Gain vs. Input Power

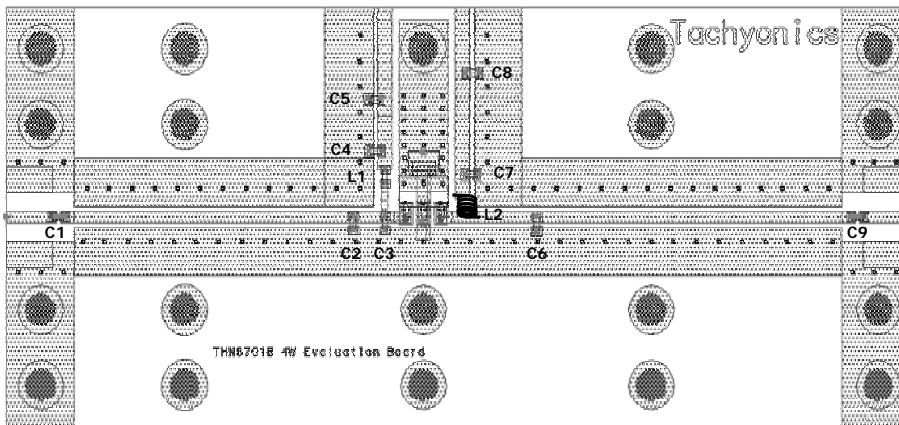


Collector Current or Power Added Efficiency vs. Input Power



THN6701B

□ Evaluation Board (for FRS at 465 MHz)



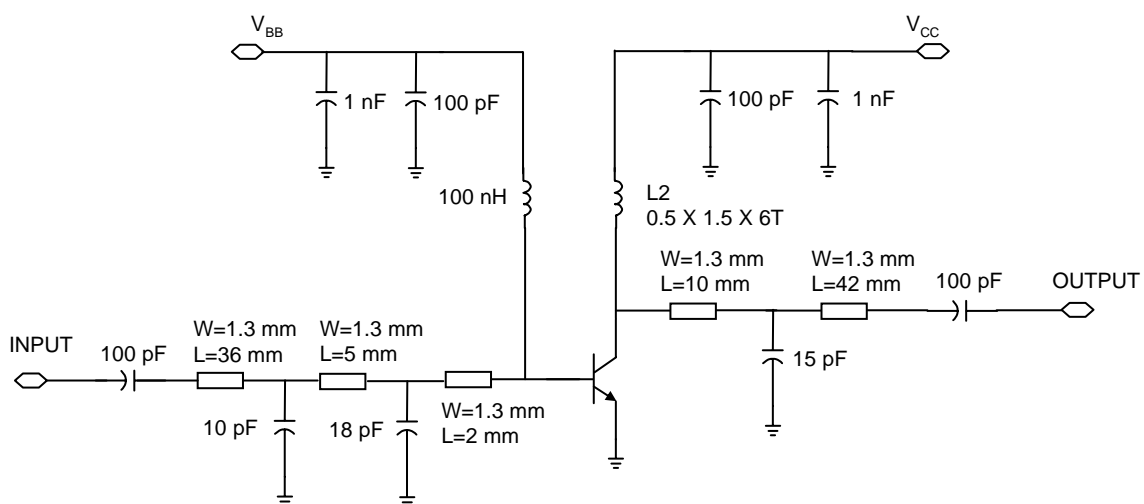
Part	Value
C1, C4 C7, C9	100 pF (1608, Murata)
C2	10 pF (1608, Murata)
C3	18 pF (1608, Murata)
C5, C8	1 nF (1608, Murata)
C6	15 pF (1608, Murata)
L1	100 nH (1608, Murata)
L2	0.4 X 1.5 X 6T (Air Coil)

FR4 glass epoxy: dielectric constant = 4.5, thickness = 0.8 mm

Evaluation board dimension = 119 x 50 mm²

Test condition: CW test, $V_{CC} = 6.0$ V, $I_{CQ} = 50$ mA, $f = 465$ MHz

□ Test Circuit Schematic Diagram



THN6701B

□ Package Dimensions

