

FEATURES

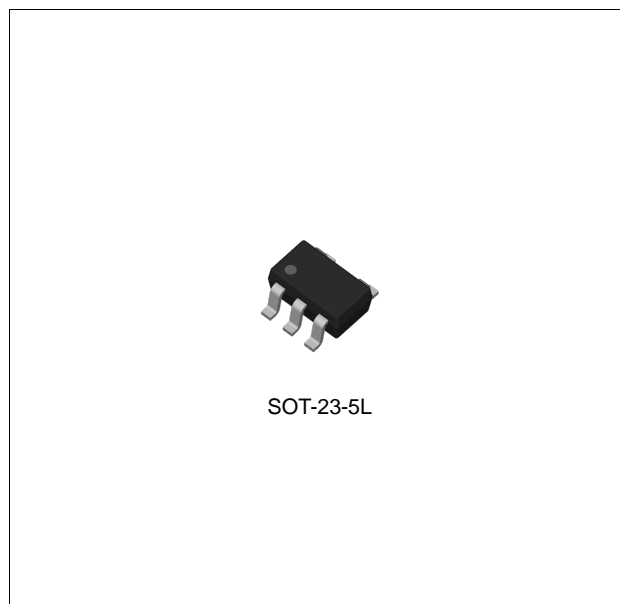
- Ultra-Low Dropout Voltage
- Compatible with low ESR MLCC as Input/ Output Capacitor
- Good Line and Load Regulation
- Guaranteed Output Current of 600 mA
- Adjustable Output Voltage up to 4.5 V
- Output Auto Discharge Function
- Over-Temperature/ Over-Current Protection
- Available in SOT-23-5L Package

APPLICATIONS

- LCD TVs and SETTOP Boxes
- Battery Powered Equipment
- Motherboards and Graphic Cards
- Microprocessor Power Supplies
- Peripheral Cards
- High Efficiency Linear Regulators
- Battery Chargers

DESCRIPTION

The TJ4306 of high performance ultra-low dropout linear regulator operates from 2.5 V to 6.0 V input supply and provides ultra-low dropout voltage, high output current with low ground current. Wide range of preset output voltage options are available. These ultra-low dropout linear regulators respond fast to step changes in load which makes them suitable for low voltage micro-processor applications. The TJ4306 is developed on a CMOS process technology which allows low quiescent current operation independent of output load current. This CMOS process also allows the TJ4306 to operate under extremely low dropout conditions.



ORDERING INFORMATION

Device	Package
TJ4306GSF5-ADJ	SOT-23-5L

ABSOLUTE MAXIMUM RATINGS (Note 1)

CHARACTERISTIC	SYMBOL	MIN	MAX	UNIT
Input Supply Voltage (Survival)	V_{IN}	-0.3	6.5	V
Enable Input Voltage (Survival)	V_{EN}	-0.3	$V_{IN} + 0.3$	V
Maximum Output Current	I_{MAX}	-	0.6	A
Operating Junction Temperature Range	T_{JOPR}	-40	125	°C
Storage Temperature Range	T_{STG}	-65	150	°C

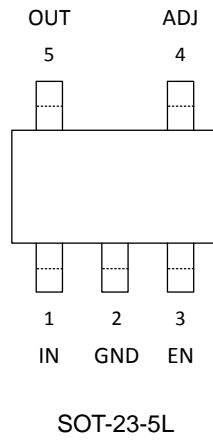
RECOMMENDED OPERATING RATINGS (Note 2)

CHARACTERISTIC	SYMBOL	MIN	MAX	UNIT
Input Supply Voltage	V_{IN}	2.5	6.0	V
Enable Input Voltage	V_{EN}	0	V_{IN}	V

ORDERING INFORMATION

Package	Order No.	Description	Supplied As	Status
SOT-23-5L	TJ4306GSF5-ADJ	600 mA, Adjustable, Enable	Tape & Reel	Active

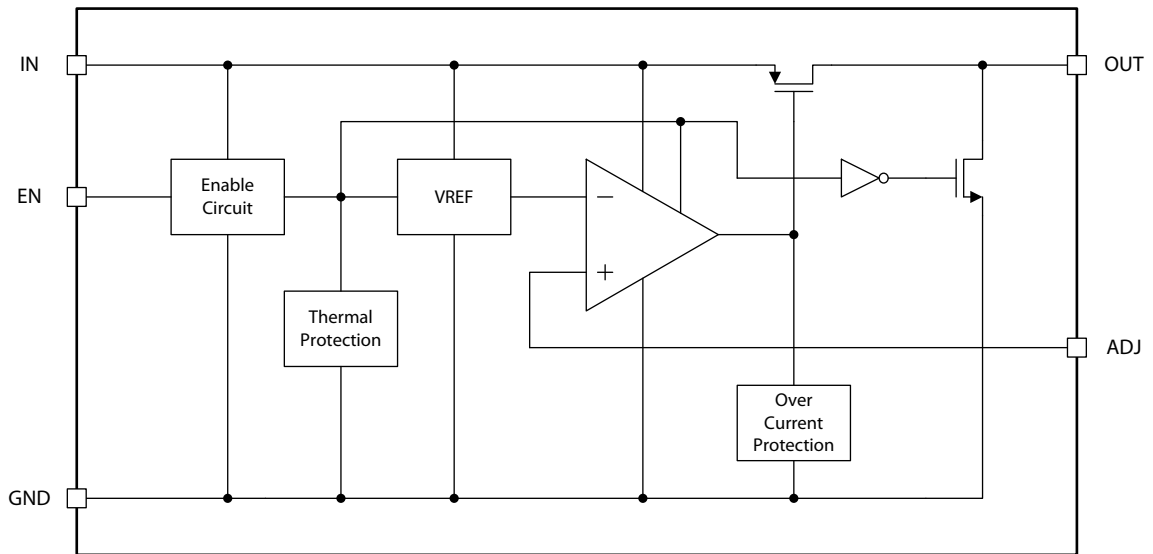
PIN CONFIGURATION



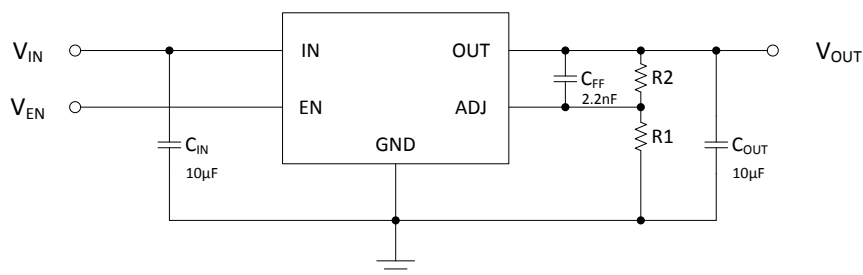
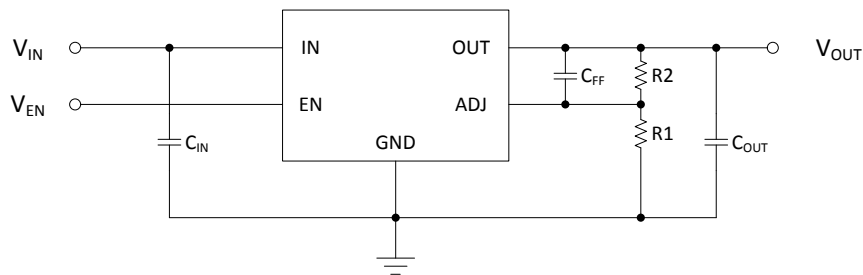
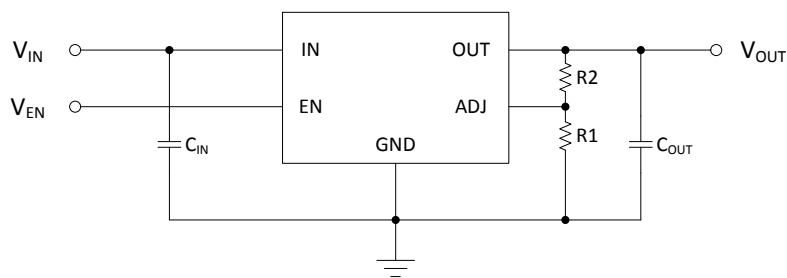
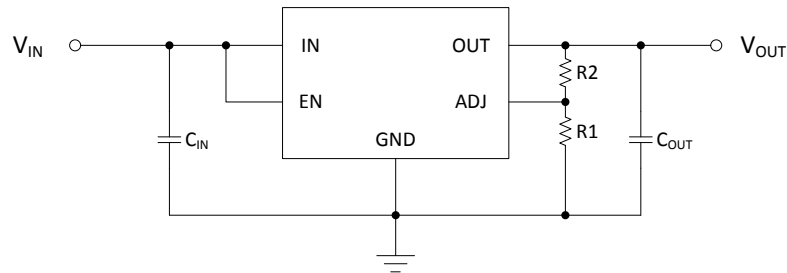
PIN DESCRIPTION

Pin No.	Pin Name	Pin Function
1	IN	Input Supply.
2	GND	Ground.
3	EN	Chip Enable. Active High. Do Not Float.
4	ADJ	Output Adjust.
5	OUT	Output Voltage.

BLOCK DIAGRAM



TYPICAL APPLICATION CIRCUIT



* See Application Information for the details over external capacitor.

** TJ4306 can deliver a continuous current of 600 mA over the full operating temperature. However, the output current is limited by the restriction of power dissipation which differs from packages. A heat sink may be required depending on the maximum power dissipation and maximum ambient temperature of application. With respect to the applied package, the maximum output current of 600 mA may be still undeliverable.

*** For the details, see Application Information.

ELECTRICAL CHARACTERISTICS (Note 3)

Limits in standard typeface are for $T_J = 25^\circ\text{C}$, and limits in **boldface type** apply over the **full operating temperature range**.

Unless otherwise specified: $V_{IN}^{(Note\ 4)} = V_{O(NOM)} + 1.0\text{ V}$, $I_L = 10\text{ mA}$, $C_{IN} = 10\ \mu\text{F}$, $C_{OUT} = 10\ \mu\text{F}$, $V_{EN} = V_{IN} - 0.3\text{ V}$

PARAMETER	SYMBOL	TEST CONDITIONS	MIN	TYP	MAX	UNIT	
Output Voltage Tolerance	V_O	$V_{OUT} + 1.0\text{ V} \leq V_{IN} \leq 5.5\text{ V}$	-2 -3	0	2 3	%	
Adjustable Pin Voltage	V_{ADJ}	$2.5\text{ V} \leq V_{IN} \leq 5.5\text{ V}$	0.588 0.582	0.6	0.612 0.618	V	
Line Regulation <small>(Note 5)</small>	ΔV_{LINE}	$V_{OUT} + 1.0\text{ V} \leq V_{IN} \leq 5.5\text{ V}$	-	0.25	-	%/V	
Load Regulation <small>(Note 5, 6)</small>	ΔV_{LOAD}	$10\text{ mA} \leq I_{OUT} \leq 600\text{ mA}$	-	0.10	-	%	
Dropout Voltage <small>(Note 7)</small>	V_{DROP}	$I_{OUT} = 100\text{ mA}$	-	40	50 60	mV	
		$I_{OUT} = 300\text{ mA}$	-	100	140 170		
		$I_{OUT} = 600\text{ mA}$	-	200	260 320		
Ground Pin Current <small>(Note 8)</small>	I_{GND}	$I_{OUT} = 100\ \mu\text{A}$	-	80	150 200	μA	
		$I_{OUT} = 600\text{ mA}$	-	150	220 300		
Ground Pin Current <small>(Note 9)</small>	I_{GND_OFF}	$V_{EN} < 0.2\text{ V}$	-	0.1	- 1.0	μA	
Power Supply Rejection Ratio	PSRR	$f = 1.0\text{ kHz}$	-	45	-	dB	
		$f = 1.0\text{ kHz}$, $C_{FF} = 1.0\ \mu\text{F}$	-	60	-		
Thermal Shutdown Temperature	T_{SD}		-	165	-	$^\circ\text{C}$	
Thermal Shutdown Hysteresis	ΔT_{SD}		-	20	-	$^\circ\text{C}$	
OCP Threshold Level	I_{OCP}		-	1.8	-	A	
Auto Discharge Resistance	R_{DS}	$V_{IN} = 5.0\text{ V}$, $V_{EN} = 0\text{ V}$	-	330	-	Ω	
Enable threshold	Logic Low	V_{IL}	Output = Low	-	-	0.4	V
	Logic High	V_{IH}	Output = High	2.0	-	-	V
Enable Input Current	I_{EN}	$V_{EN} = V_{IN}$	-	0.1	- 1.0	μA	

Note 1. Exceeding the absolute maximum ratings may damage the device.

Note 2. The device is not guaranteed to function outside its operating ratings.

Note 3. Stresses listed as the absolute maximum ratings may cause permanent damage to the device. These are for stress ratings. Functional operating of the device at these or any other conditions beyond those indicated in the operational sections of the specifications is not implied. Exposure to absolute maximum rating conditions for extended periods may

remain possibly to affect device reliability.

Note 4. The minimum operating value for input voltage is equal to either ($V_{OUT,NOM} + V_{DROP}$) or 2.5 V, whichever is greater.

Note 5. Output voltage line regulation is defined as the change in output voltage from the nominal value due to change in the input line voltage. Output voltage load regulation is defined as the change in output voltage from the nominal value due to change in load current.

Note 6. Regulation is measured at constant junction temperature by using a 10 ms current pulse. Devices are tested for load regulation in the load range from 10 mA to 600 mA.

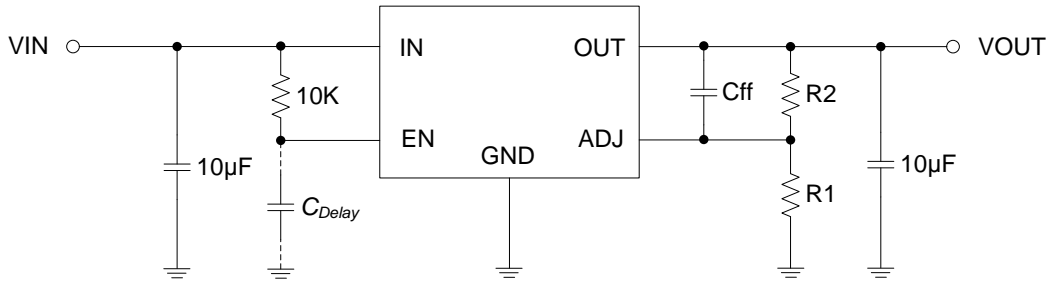
Note 7. Dropout voltage is defined as the minimum input to output differential voltage at which the output drops 2.0 % below the nominal value. Dropout voltage specification applies only to output voltages of 2.5 V and above. For output voltages below 2.5 V, the dropout voltage is nothing but the input to output differential, since the minimum input voltage is 2.5 V.

Note 8. Ground current, or quiescent current, is the difference between input and output currents. It's defined by $I_{GND} = I_{IN} - I_{OUT}$ under the given loading condition. The total current drawn from the supply is the sum of the load current plus the ground pin current.

Note 9. Ground current, or standby current, is the input current drawn by a regulator when the output voltage is disabled by an enable signal.

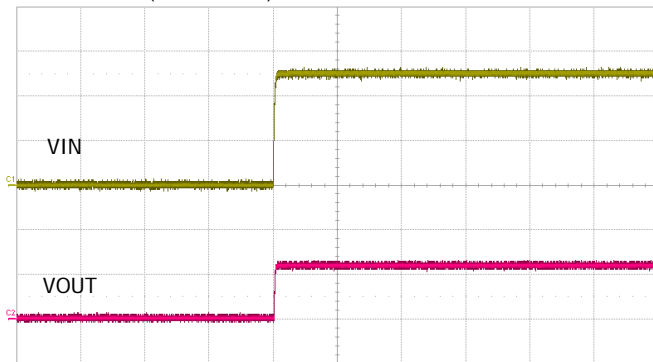
TYPICAL OPERATING CHARACTERISTICS

TEST CIRCUIT



VOUT = 1.2V (VIN = 2.5V, R1 = 10KΩ, R2 = 10KΩ)

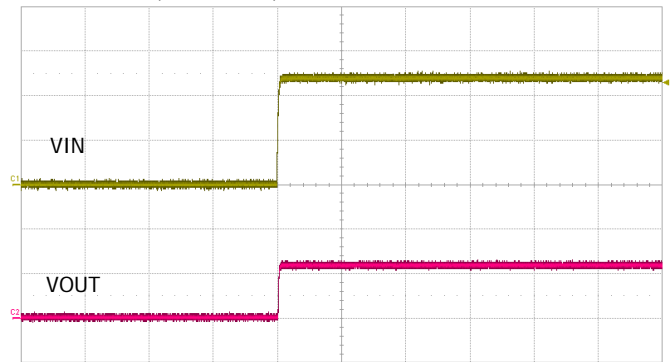
VOUT = 1.2V (Cff = 10nF)



VIN : 1.0V/div, VOUT : 1.0V/div, Time : 10ms/div

Start Up @ IOUT=0A

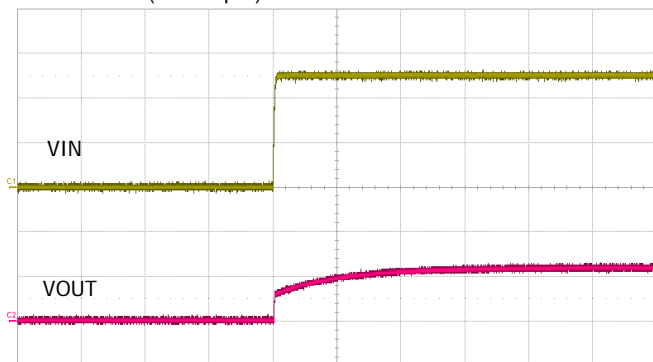
VOUT = 1.2V (Cff = 10nF)



VIN : 1.0V/div, VOUT : 1.0V/div, Time : 10ms/div

Start Up @ IOUT=600mA

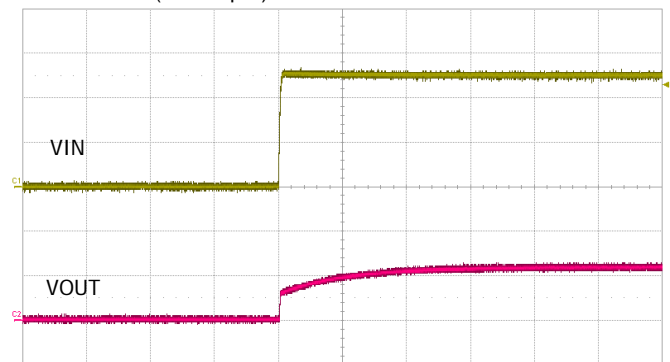
VOUT = 1.2V (Cff = 1µF)



VIN : 1.0V/div, VOUT : 1.0V/div, Time : 10ms/div

Start Up @ IOUT=0A

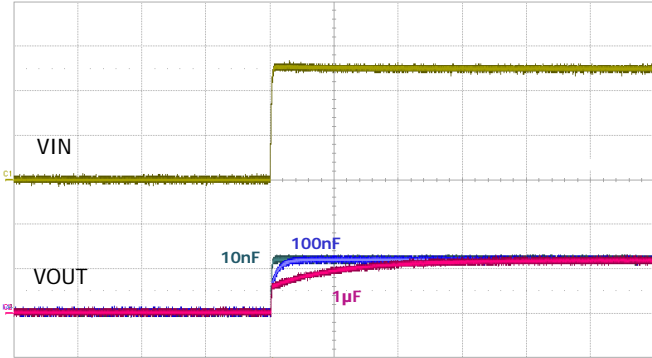
VOUT = 1.2V (Cff = 1µF)



VIN : 1.0V/div, VOUT : 1.0V/div, Time : 10ms/div

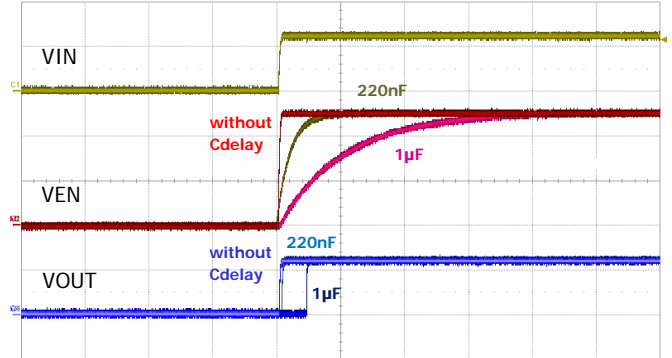
Start Up @ IOUT=600mA

VOUT = 1.2V (Cff : varied)



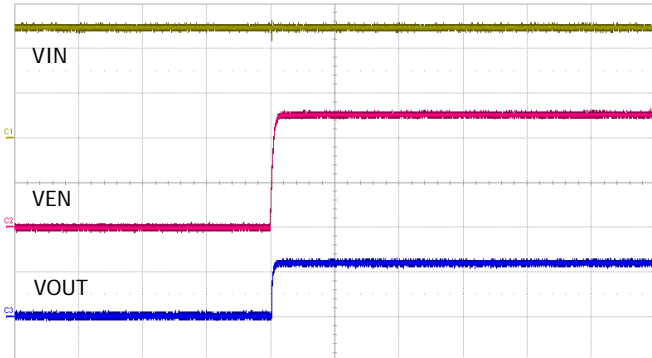
VIN : 1.0V/div, VOUT : 1.0V/div, Time : 10ms/div
Start Up @ IOU=10mA

VOUT = 1.2V (Cdelay : varied, Cff = 10nF)



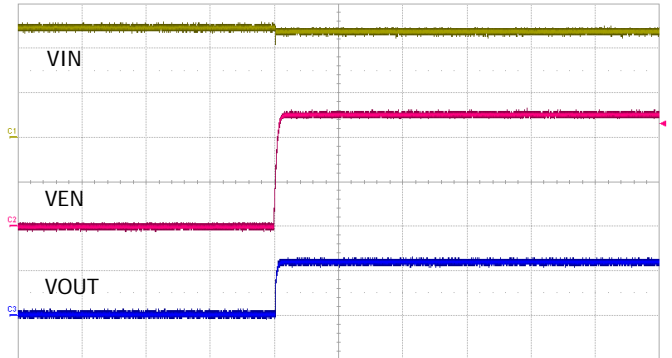
VIN : 2.0V/div, VEN : 1.0V/div, VOUT : 1.0V/div, Time : 10ms/div
Start Up with Cdelay @ IOU=10mA

VOUT = 1.2V (Cff = 10nF)



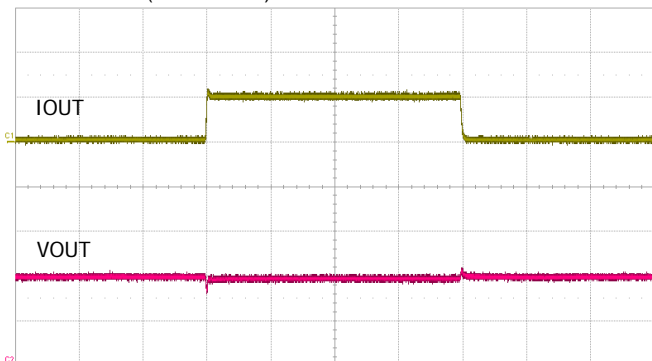
VIN : 1.0V/div, VEN : 1.0V/div, VOUT : 1.0V/div, Time : 5ms/div
Start Up by External VEN @ IOU=0A

VOUT = 1.2V (Cff = 10nF)



VIN : 1.0V/div, VEN : 1.0V/div, VOUT : 1.0V/div, Time : 5ms/div
Start Up by External VEN @ IOU=600mA

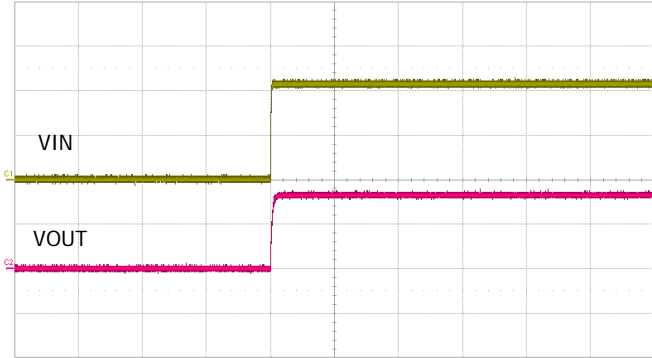
VOUT = 1.2V (Cff = 10nF)



IOUT : 0.6A/div, VOUT : 100mV/div, Time : 500µs/div
Load Transient Response

VOUT = 3.3V (VIN = 4.3V, R1 = 10KΩ, R2 = 45KΩ)

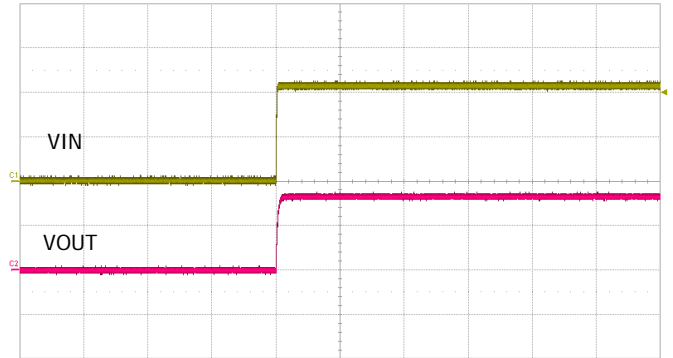
VOUT = 3.3V (Cff = 10nF)



VIN : 2.0V/div, VOUT : 2.0V/div, Time : 20ms/div

Start Up @ IOUT=0A

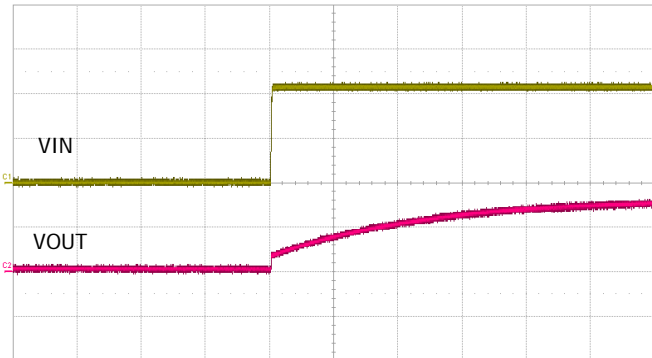
VOUT = 3.3V (Cff = 10nF)



VIN : 2.0V/div, VOUT : 2.0V/div, Time : 20ms/div

Start Up @ IOUT=600mA

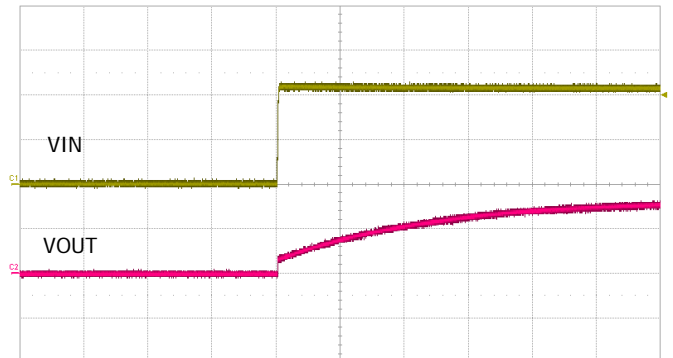
VOUT = 3.3V (Cff = 1μF)



VIN : 2.0V/div, VOUT : 2.0V/div, Time : 20ms/div

Start Up @ IOUT=0A

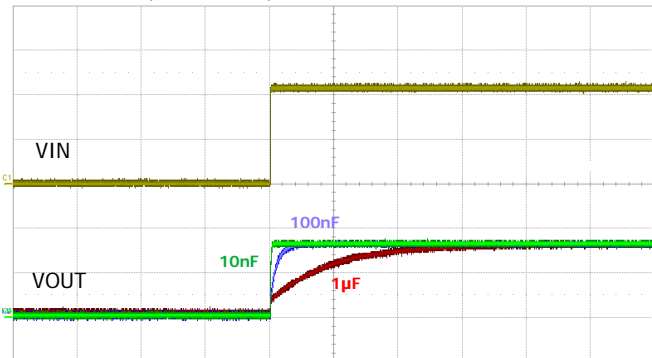
VOUT = 3.3V (Cff = 1μF)



VIN : 2.0V/div, VOUT : 2.0V/div, Time : 20ms/div

Start Up @ IOUT=600mA

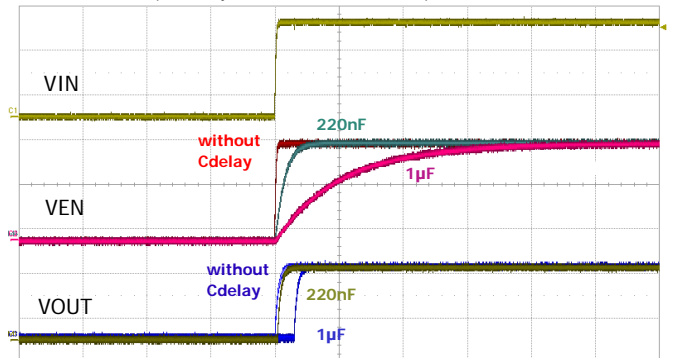
VOUT = 3.3V (Cff : varied)



VIN : 2.0V/div, VOUT : 2.0V/div, Time : 50ms/div

Start Up @ IOUT=10mA

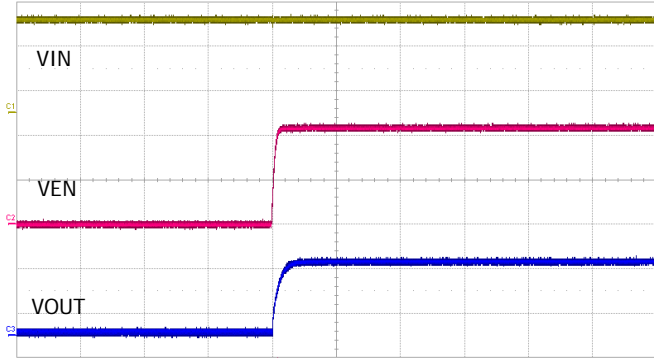
VOUT = 3.3V (Cdelay : varied, Cff = 10nF)



VIN : 2.0V/div, VEN : 2.0V/div, VOUT : 2.0V/div, Time : 10ms/div

Start Up with Cdelay @ IOUT=10mA

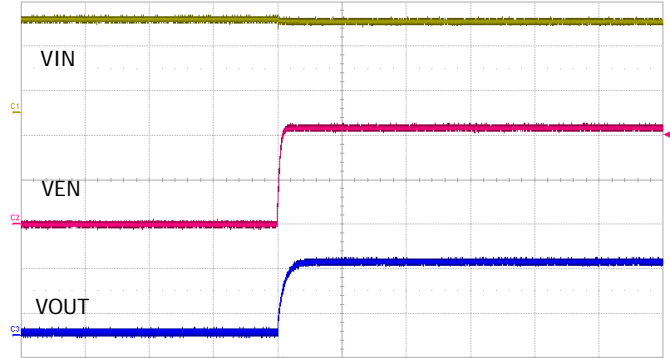
VOUT = 3.3V (Cff = 10nF)



VIN : 2.0V/div, VEN : 2.0V/div, VOUT : 2.0V/div, Time : 5ms/div

Start Up by External VEN @ IOUT=0A

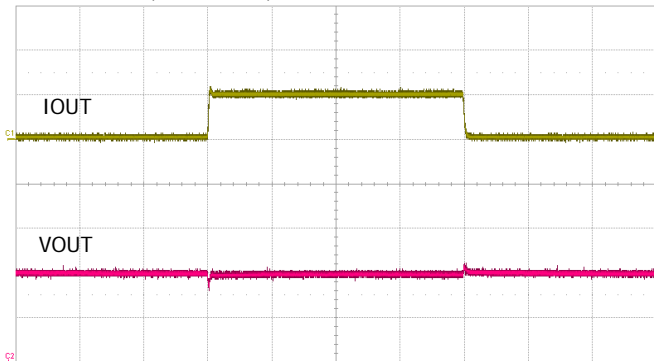
VOUT = 3.3V (Cff = 10nF)



VIN : 2.0V/div, VEN : 2.0V/div, VOUT : 2.0V/div, Time : 5ms/div

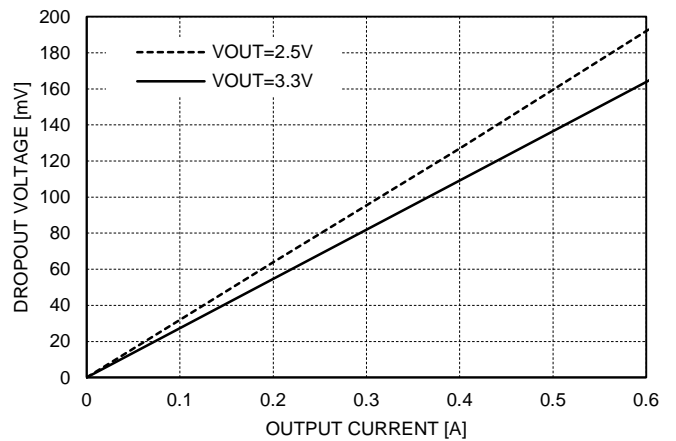
Start Up by External VEN @ IOUT=600mA

VOUT = 3.3V (Cff = 10nF)



IOUT : 0.6A/div, VOUT : 100mV/div, Time : 500µs/div

Load Transient Response



Dropout Voltage

APPLICATION INFORMATION

INTRODUCTION

TJ4306 is intended for applications where high current capability and very low dropout voltage are required. It provides a simple, low cost solution that occupies very little PCB area. Additional features include an enable pin to allow for a very low power consumption standby mode, an adjustable pin to provide a fully adjustable output voltage.

COMPONENT SELECTION

Input Capacitor

A large bulk capacitance over than 10 μF should be closely placed to the input supply pin of the TJ4306 to ensure that the input supply voltage does not sag. Also a minimum of 10 μF ceramic capacitor is recommended to be placed directly next to the VIN Pin. It allows for the device being some distance from any bulk capacitor on the rail. Additionally, input droop due to load transients is reduced, improving load transient response. Additional capacitance may be added if required by the application (See Fig. 1).

Output Capacitor

A minimum ceramic capacitor over than 10 μF should be very closely placed to the output voltage pin of the TJ4306. Increasing capacitance will improve the overall transient response and stability.

Decoupling (Bypass) Capacitor

In very electrically noisy environments, it is recommended that additional ceramic capacitors be placed from VIN to GND. The use of multiple lower value ceramic capacitors in parallel with output capacitor also allows to achieve better transient performance and stability if required by the application (See Fig. 1).

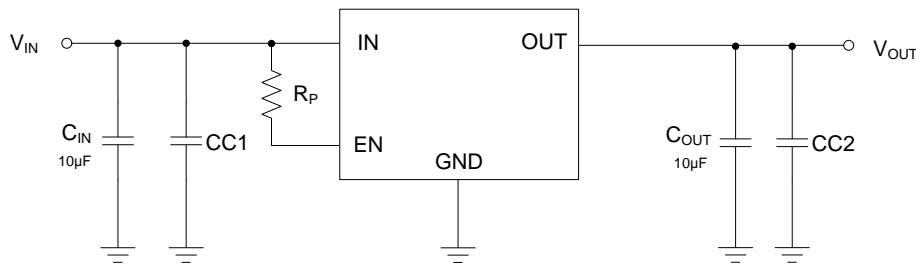


Fig. 1. Application with Decoupling Capacitor, CC1 & CC2

Feed-Forward Capacitor

To get the higher PSRR than the inherent performance of TJ4306, it is recommended that additional ceramic feed-forward capacitor be placed from V_{OUT} pin to ADJ pin. The capacitance of feed-forward capacitor with range of 2.2 nF to 1.0 μF allows to achieve better PSRR performance when required by the application (See Fig. 2).

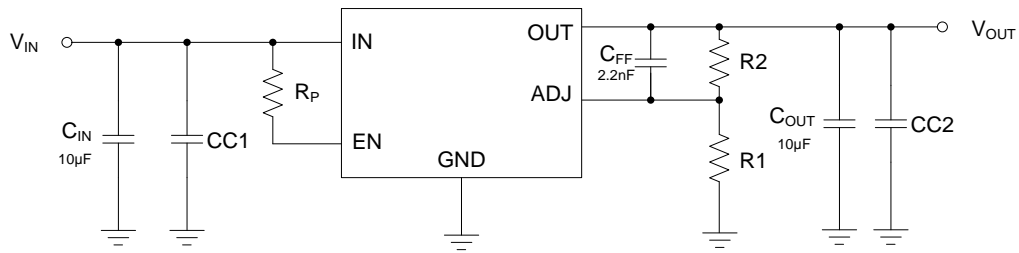


Fig. 2. Application with Feed-Forward Capacitor, C_{FF}

Delayed Start-Up

When power sequence control is required or rising time of input supply voltage is over than 100 µsec, it is recommended to apply delayed start-up by using C_{delay} as shown in Fig. 3. It can adjust proper delay by R_p-C_{delay} time constant. And also it can prevent any unexpected transient characteristics at output voltage when the rising time of input supply voltage is as long as 100 µsec or longer.

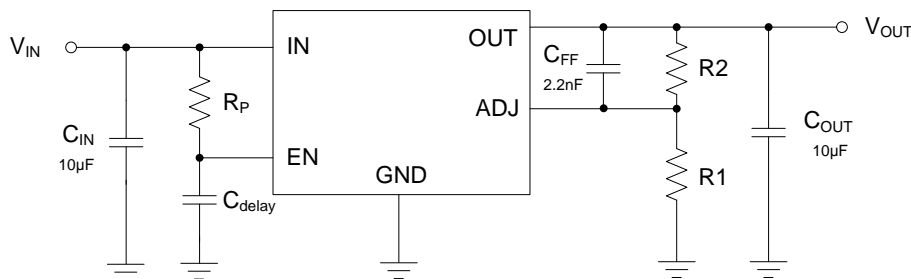
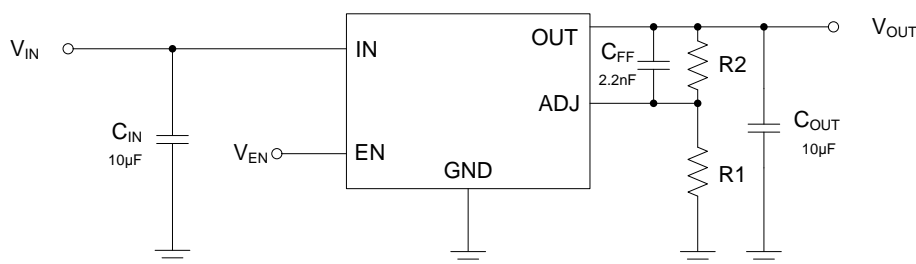


Fig. 3. Application with Delayed Start-Up

OUTPUT ADJUSTMENT (ADJUSTABLE VERSION)

An adjustable output device has output voltage range of 1.0 V to 4.5 V. The operating condition of V_{IN} and the operating characteristics of V_{OUT} depend on the dropout voltage performance in accordance with output load current. To obtain a desired output voltage, the following equation can be used with R1 resistor range of 1.0 kΩ to 100 kΩ.



$$R2 = R1 \left(\frac{V_{OUT}}{0.6} - 1 \right)$$

Fig. 4. Application for Adjustable Output Voltage

To enhance output stability, a feed-forward capacitor of 2.2 nF to 1.0 µF can be placed in series with OUT and

ADJ (Refer to "Component Selection" Section).

AUTO DISCHARGE FUNCTION

The TJ4306 provides an auto discharge function that is used for faster discharging of the output capacitor. This function is automatically activated when the EN input goes into an active low state.

MAXIMUM OUPUT CURRENT CAPABILITY

The TJ4306 can deliver a continuous current of 600 mA over the full operating junction temperature range. However, the output current is limited by the restriction of power dissipation of package. With respect to the applied package, the maximum output current of 600 mA may be still undeliverable due to the restriction of the power dissipation of TJ4306. Under all possible conditions, the junction temperature must be within the range specified under operating conditions.

The temperatures over the device are given by:

$$T_C = T_A + P_D \times \theta_{CA}$$

$$T_J = T_C + P_D \times \theta_{JC}$$

$$T_J = T_A + P_D \times \theta_{JA}$$

where T_J is the junction temperature, T_C is the case temperature, T_A is the ambient temperature, P_D is the total power dissipation of the device, θ_{CA} is the thermal resistance of case-to-ambient, θ_{JC} is the thermal resistance of junction-to-case, and θ_{JA} is the thermal resistance of junction to ambient.

The total power dissipation of the device is given by:

$$\begin{aligned} P_D &= P_{IN} - P_{OUT} = (V_{IN} \times I_{IN}) - (V_{OUT} \times I_{OUT}) \\ &= (V_{IN} \times (I_{OUT} + I_{GND})) - (V_{OUT} \times I_{OUT}) = (V_{IN} - V_{OUT}) \times I_{OUT} + V_{IN} \times I_{GND} \end{aligned}$$

where I_{GND} is the operating ground current of the device which is specified at the Electrical Characteristics. The maximum allowable temperature rise (T_{Rmax}) depends on the maximum ambient temperature (T_{Amax}) of the application, and the maximum allowable junction temperature (T_{Jmax}):

$$T_{Rmax} = T_{Jmax} - T_{Amax}$$

The maximum allowable value for junction-to-ambient thermal resistance, θ_{JA} , can be calculated using the formula:

$$\theta_{JA} = T_{Rmax} / P_D$$

TJ4306 is available in SOT-23-5 package. The thermal resistance depends on amount of copper area, and on air flow.

If proper cooling solution such as copper plane area or air flow is applied, the maximum allowable power dissipation could be increased. However, if the ambient temperature is increased, the allowable power dissipation would be decreased.

REVISION NOTICE

The description in this datasheet is subject to change without any notice to describe its electrical characteristics properly.