



MODEL NO. : TM050NBH01

ISSUED DATE: 2012-05-10

VERSION : Ver 0.1

- Preliminary Specification**
- Final Product Specification**

Customer : MITAC

Approved by	Notes

SHANGHAI TIANMA Confirmed :

Prepared by	Checked by	Approved by

This technical specification is subjected to change without notice



Table of Contents

Table of Contents.....	2
Record of Revision	3
1 General Specifications	4
2 Input/Output Terminals.....	5
3 Absolute Maximum Ratings	6
4 Electrical Characteristics.....	7
5 Timing Chart	9
6 Optical Characteristics.....	12
7 Environmental / Reliability Test	15
8 Mechanical Drawing	16
9 Packing Drawing.....	18
10 TFT- LCD Module Incoming Inspection Standard.....	20
11 Precautions for Use of LCD Modules	23



Record of Revision

Rev	Issued Date	Description	Editor
0.1	2012-05-10	Preliminary Specification Release	RenCun Wu
		1.	



1 General Specifications

Feature		Spec
Display Spec.	Size	5.0 inch
	Resolution	480(RGB)x272
	Interface	RGB 24 bits
	Color Depth	16.7M
	Technology Type	a-Si
	Pixel Configuration	R.G.B Vertical Stripe
	Display Mode	TN,NW
	Surface Treatment	AG
	Viewing Direction	12 o'clock
	Gray Scale Inversion Direction	6 o'clock
Mechanical Characteristics	LCM (W x H x D) (mm)	120.70x75.80x4.25
	Active Area(mm)	110.88x62.83
	With /Without TSP	With TSP
	Weight (g)	TBD
	LED Numbers	12 LEDs

Note 1: Viewing direction for best image quality is different from TFT definition. There is a 180 degree shift.

Note 2: Requirements on Environmental Protection: Q/S0002

Note 3: LCM weight tolerance: $\pm 5\%$



2 Input/Output Terminals

2.1 TFT LCD Panel

NO	Symbol	I/O	Description	Comment
1	LED-K	P	Back light cathode	
2	LED-A	P	Back light anode	
3	GND	P	Ground	
4	VCC	P	Power supply	
5	R0	I	Data input	
6	R1	I	Data input	
7	R2	I	Data input	
8	R3	I	Data input	
9	R4	I	Data input	
10	R5	I	Data input	
11	R6	I	Data input	
12	R7	I	Data input	
13	G0	I	Data input	
14	G1	I	Data input	
15	G2	I	Data input	
16	G3	I	Data input	
17	G4	I	Data input	
18	G5	I	Data input	
19	G6	I	Data input	
20	G7	I	Data input	
21	B0	I	Data input	
22	B1	I	Data input	
23	B2	I	Data input	
24	B3	I	Data input	
25	B4	I	Data input	
26	B5	I	Data input	
27	B6	I	Data input	
28	B7	I	Data input	
29	GND	P	Ground	
30	CLK	I	Clock for input data.	
31	DISP	I	Standby setting pin. Normally pulled high. If connected to low level, the IC is in standby mode.	
32	HSYNC	I	Horizontal sync input with negative polarity. If unused, please pull high level.	
33	VSYNC	I	Vertical sync input with negative polarity. If unused, please pull high level.	
34	DEN	I	Data input enable. If unused, please pull low level.	
35	NC	—	No connection	
36	GND	P	Ground	
37	XR	—	XR	
38	YD	I	YD	
39	XL	I	XL	
40	YU	I	YU	

The information contained herein is the exclusive property of SHANGHAI TIANMA MICRO-ELECTRONICS Corporation, and shall not be distributed, reproduced, or disclosed in whole or in part without prior written permission of SHANGHAI TIANMA MICRO-ELECTRONICS Corporation.



3 Absolute Maximum Ratings

3.1 Driving TFT LCD Panel

Ta =25°C

Item	Symbol	MIN	MAX	Unit	Remark
Supply Voltage	V _{CC}	-0.3	4.0	V	
Back Light Forward Current	I _{LED}	--	25	mA	For each LED
Operating Temperature	T _{OPR}	-10	60	°C	
Storage Temperature	T _{STG}	-20	70	°C	



4 Electrical Characteristics

4.1 Driving TFT LCD Panel

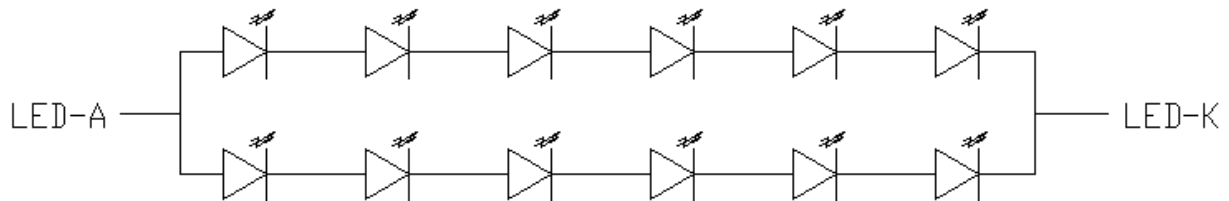
GND=0V, Ta=25°C

Item	Symbol	MIN	TYP	MAX	Unit	Remark
Supply Voltage	V_{CC}	3.0	3.3	3.6	V	
Input Signal Voltage	Low Level	V_{IL}	GND	--	$0.3 \times V_{CC}$	V
	High Level	V_{IH}	$0.7 \times V_{CC}$	--	V_{CC}	V
Output Signal Voltage	Low Level	V_{OL}	GND	--	GND+0.4	V
	High Level	V_{OH}	$V_{CC}-0.4$	--	V_{CC}	V
(Panel+LSI) Power Consumption	Black Mode (60Hz)		TBD	TBD	mW	
	Standby Mode		TBD	TBD	uW	

4.2 Backlight Unit

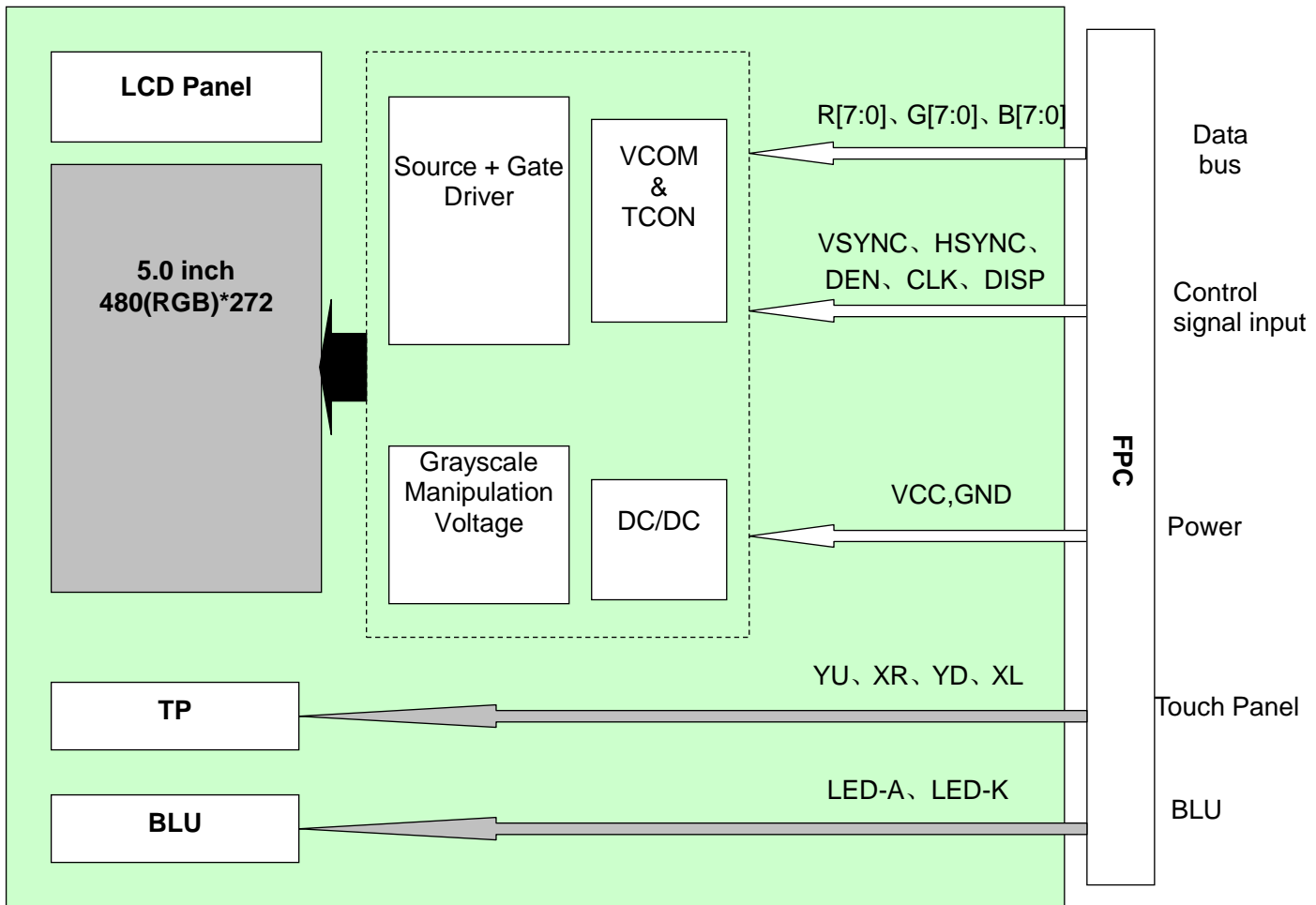
Ta=25°C

Item	Symbol	MIN	TYP	MAX	Unit	Remark
Forward Current	I_F	--	20	--	mA	1 LED
Forward Current Voltage	V_F	--	3.2	--	V	1 LED
Backlight Power Consumption	W_{BL}	--	768	--	mW	10 LEDS





4.3 Block Diagram LCD module diagram

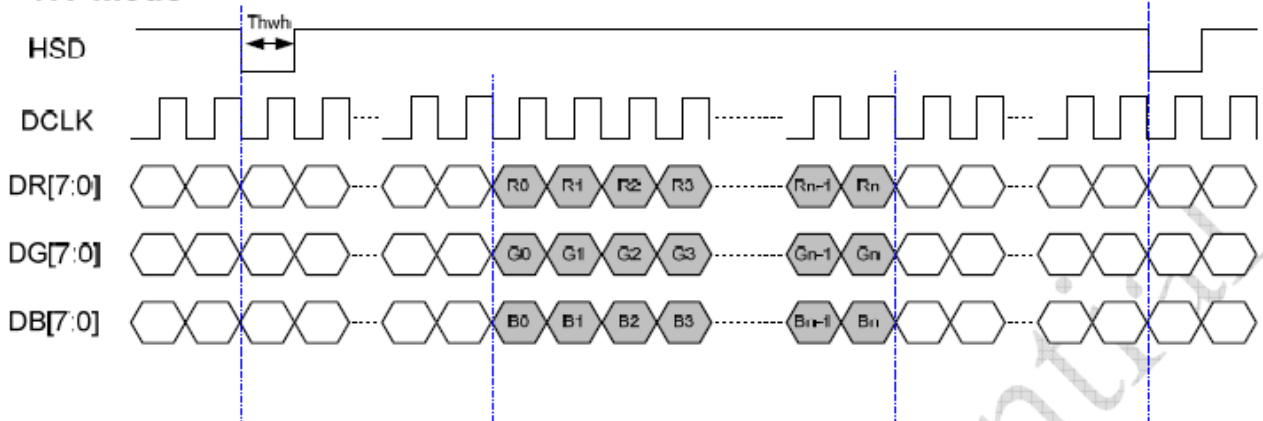




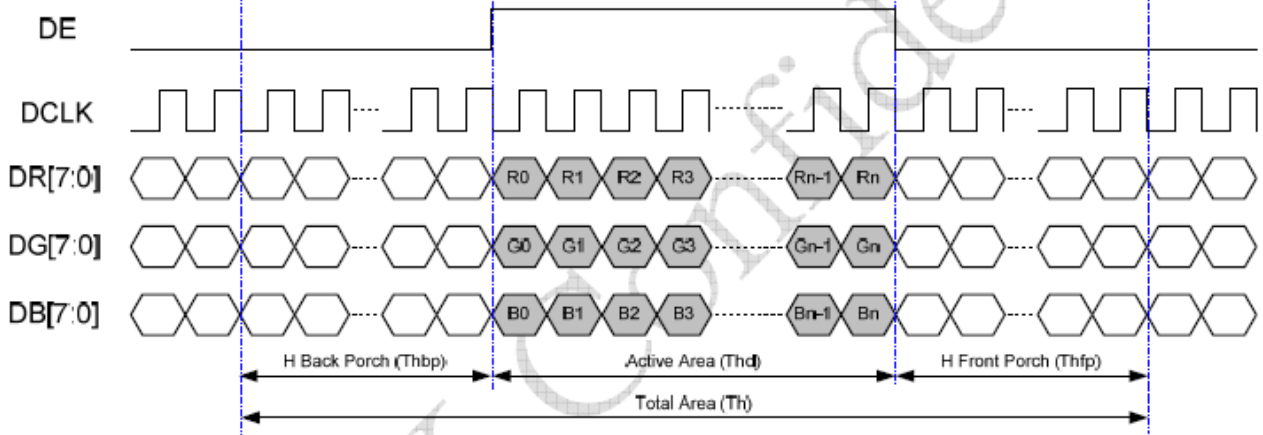
5 Timing Chart

5.1 Data Input Timing

HV Mode



DE Mode



5.2 Input Setup Timing Parameter Setting

Parameter	Symbol	Value			Unit
		Min.	Typ.	Max.	
DCLK frequency	fclk	5	9	12	MHz
VSD period time	T_v	279	288	400	H
VSD display area	T_{vd}	272			H
VSD back porch	T_{vb}	5	8	31	H
VSD front porch	T_{vfp}	2	8	97	H
HSD period time	T_h	521	525	800	DCLK
HSD display area	T_{hd}	480			DCLK
HSD back porch	T_{hbp}	37	40	255	DCLK
HSD front porch	T_{hfp}	4	5	65	DCLK

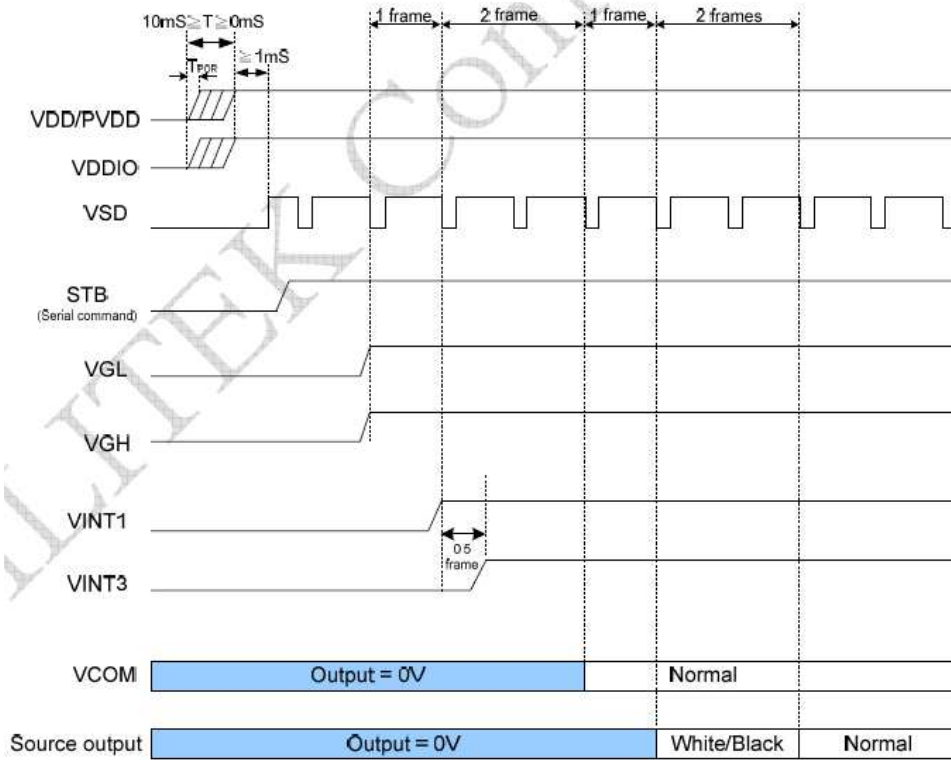
The information contained herein is the exclusive property of SHANGHAI TIANMA MICRO-ELECTRONICS Corporation, and shall not be distributed, reproduced, or disclosed in whole or in part without prior written permission of SHANGHAI TIANMA MICRO-ELECTRONICS Corporation.



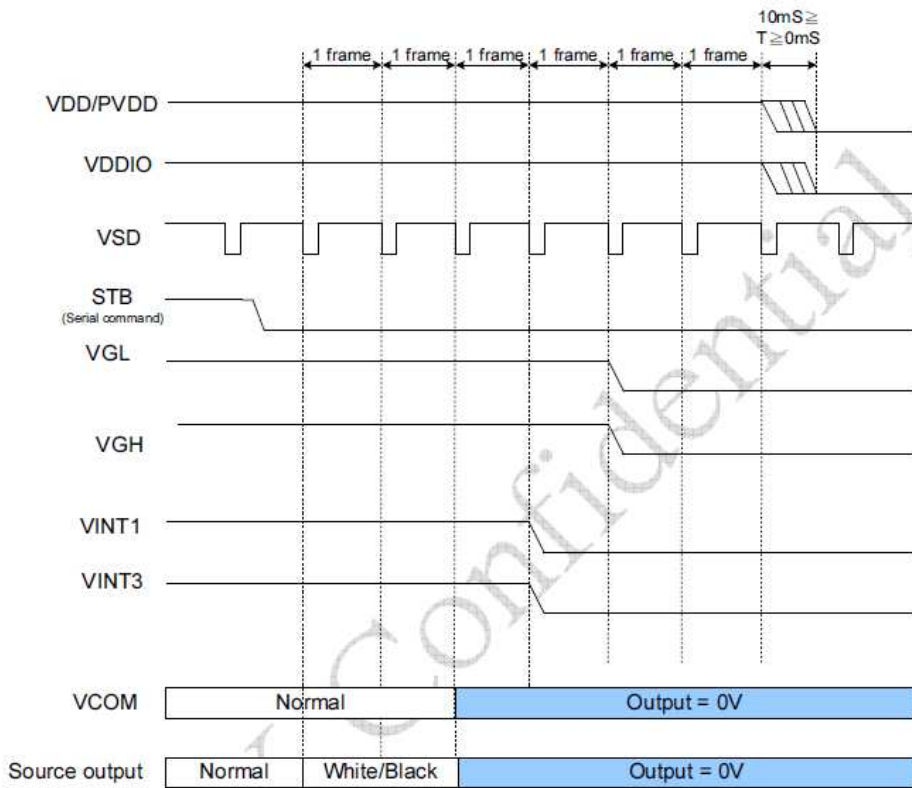
Parameters	Symbol	Min.	Typ.	Max.	Unit	Conditions
DCLK frequency	Fclk	24	27	30	MHz	
DCLK cycle time	Tclk	42	37	33	ns	
DCLK pulse duty	Tcwh	40	50	60	%	
Time from HSD to source output	Thso	-	13	-	DCLK	
Time from HSD to gate output	Thgo	-	27	-	DCLK	
Time from HSD to gate output off	Thgz	-	3	-	DCLK	
Time from HSD to VCOM	Thvc	-	12	-	DCLK	



5.3 Power ON Sequence



5.4 Power Off Sequence



The information contained herein is the exclusive property of SHANGHAI TIANMA MICRO-ELECTRONICS Corporation, and shall not be distributed, reproduced, or disclosed in whole or in part without prior written permission of SHANGHAI TIANMA MICRO-ELECTRONICS Corporation.



6 Optical Characteristics

Ta=25°C

Item	Symbol	Condition	Min	Typ	Max	Unit	Remark	
View Angles	θT	$CR \geq 10$	(50)	(60)	-	Degree	Note2,3	
	θB		(50)	(60)	-			
	θL		(60)	(70)	-			
	θR		(60)	(70)	-			
Contrast Ratio	CR	$\theta=0^\circ$	400	450	-		Note 3	
Response Time	T_{ON}	25°C	-	25	-	ms	Note 4	
	T_{OFF}							
Chromaticity	White	Backlight is on	x	(0.243)	(0.293)	(0.343)		Note 1,5
			y	(0.275)	(0.325)	(0.375)		
	Red		x	(0.565)	(0.615)	(0.665)		Note 1,5
			y	(0.294)	(0.344)	(0.394)		
	Green		x	(0.257)	(0.307)	(0.357)		Note 1,5
			y	(0.512)	(0.562)	(0.612)		
	Blue		x	(0.083)	(0.133)	(0.183)		Note 1,5
			y	(0.100)	(0.150)	(0.200)		
Uniformity	U	-	-	80	-	%	Note 6	
NTSC	-	-	-	50	-	%	Note 5	
Luminance	L	-	(250)	(280)	-	cd/m ²	Note 7	

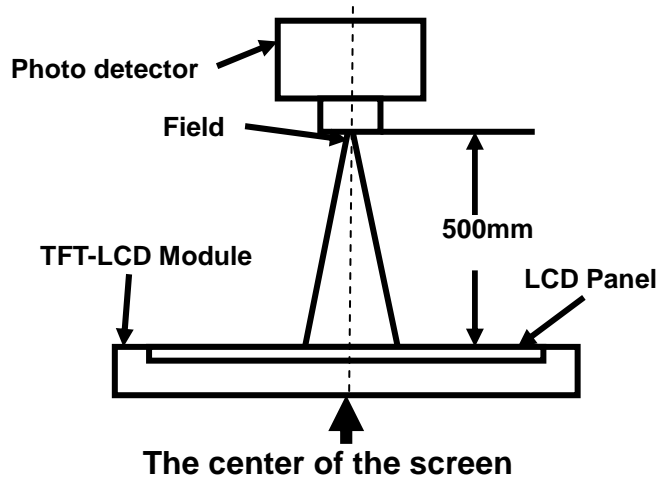
Test Conditions:

1. $I_F=20$ mA, and the ambient temperature is 25°C
2. The test systems refer to Note 1 and Note 2.



Note 1: Definition of optical measurement system.

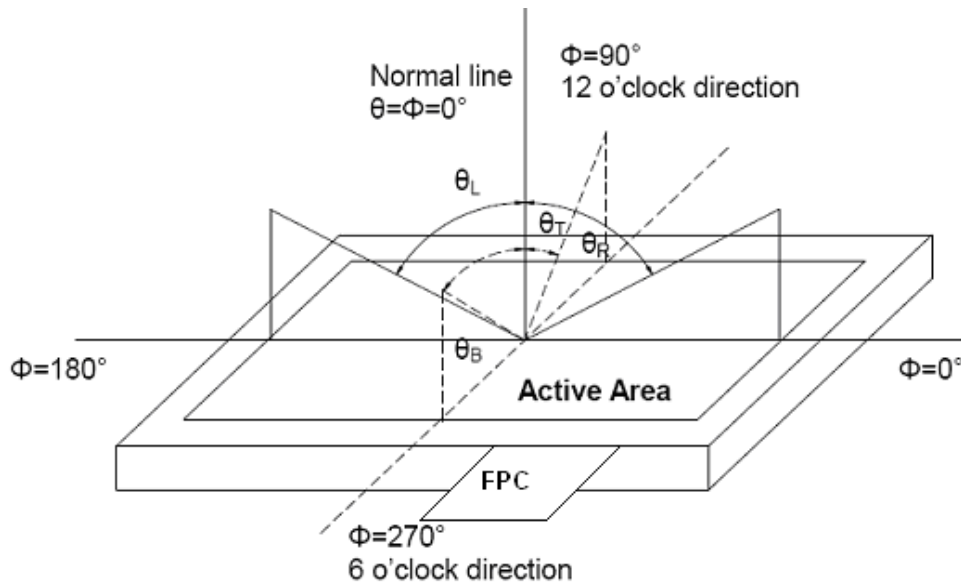
The optical characteristics should be measured in dark room. After 5 Minutes operation, the optical properties are measured at the center point of the LCD screen. All input terminals LCD panel must be ground when measuring the center area of the panel.



Item	Photo detector	Field
Contrast Ratio	SR-3A	1°
Luminance		
Chromaticity		
Lum Uniformity		
Response Time	BM-7A	2°

Note 2: Definition of viewing angle range and measurement system.

viewing angle is measured at the center point of the LCD by CONOSCOPE(ergo-80)。



Note 3: Definition of contrast ratio

$$\text{Contrast ratio (CR)} = \frac{\text{Luminance measured when LCD is on the "White" state}}{\text{Luminance measured when LCD is on the "Black" state}}$$

“White state “: The state is that the LCD should drive by V_{white} .

“Black state”: The state is that the LCD should drive by V_{black} .

V_{white} : To be determined V_{black} : To be determined.

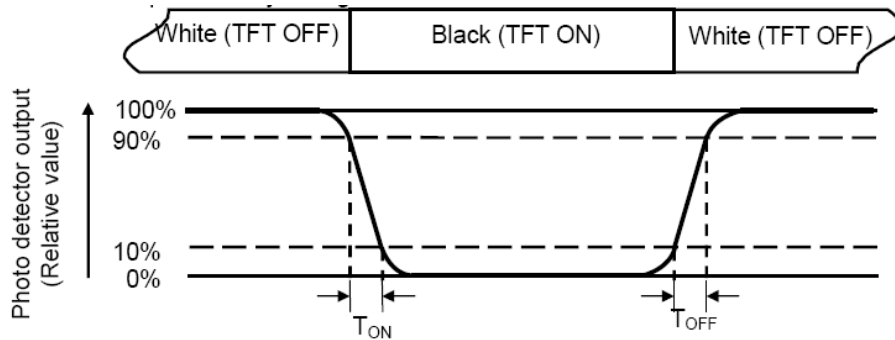
Note 4: Definition of Response time

The response time is defined as the LCD optical switching time interval between “White” state and

The information contained herein is the exclusive property of SHANGHAI TIANMA MICRO-ELECTRONICS Corporation, and shall not be distributed, reproduced, or disclosed in whole or in part without prior written permission of SHANGHAI TIANMA MICRO-ELECTRONICS Corporation.



“Black” state. Rise time (TON) is the time between photo detector output intensity changed from 90% to 10%. And fall time (TOFF) is the time between photo detector output intensity changed from 10% to 90%.



Note 5: Definition of color chromaticity (CIE1931)

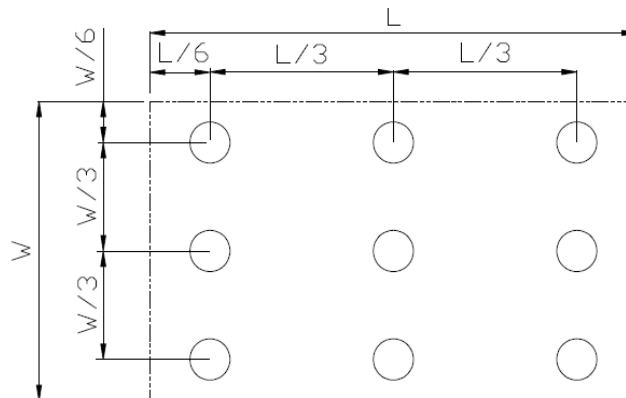
Color coordinates measured at center point of LCD.

Note 6: Definition of Luminance Uniformity

Active area is divided into 9 measuring areas (Refer Fig. 2). Every measuring point is placed at the center of each measuring area.

Luminance Uniformity (U) = Lmin/ Lmax

L-----Active area length W----- Active area width



Lmax: The measured Maximum luminance of all measurement position.

Lmin: The measured Minimum luminance of all measurement position.

Note 7: Definition of Luminance:

Measure the luminance of white state at center point.

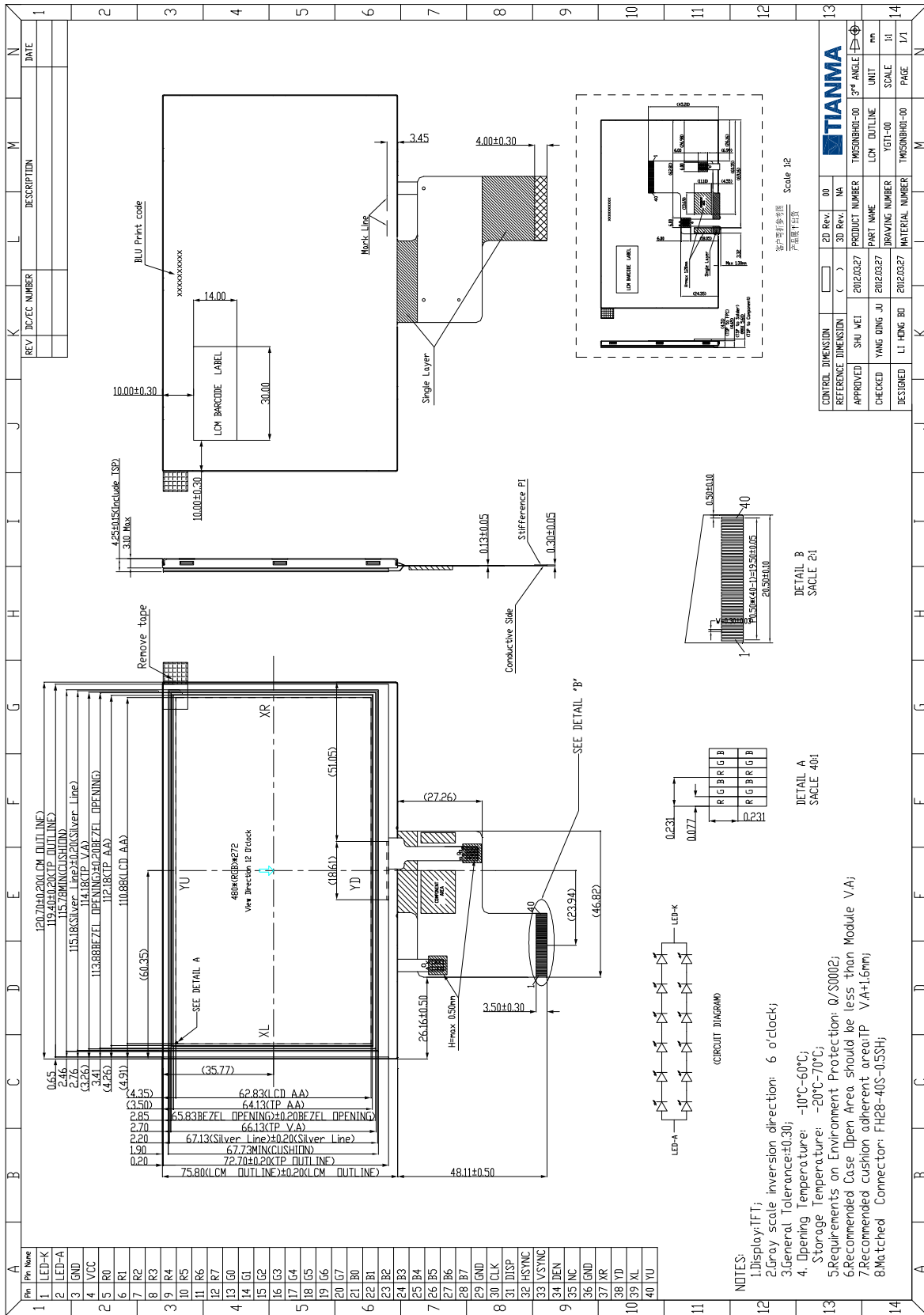
**7 Environmental / Reliability Test**

Test Item	Test Condition	Remark
Operating temp./Humi	Spec.Temp:-10~+60°C (cycles) Humidity:10~90%(R.H)Temp	
Storage	Spec.Temp:-40~+75°C (cycles) Humidity:10~90%(R.H)Temp	
Low/High temperature kick off display quality performance test	<p>1.Single panel with demo kit or system. 2.Cold start and pattern switch on LCD display. 3.Single panel with Demo Kit or system put into Low/high environment. (Non-operation).During cold boot check the LCD display pattern is exist any flicker(閃爍),drag(拖尾),shake(抖動),Blur(模糊),line(線條),cascade(瀑布狀 clock/frequency issue),bright /black dots(亮/暗點).Newton ring(牛頓環) ..etc the abnormal display on LCD screen.</p> <p>4. Test procedure: 4-1.specimens soaks in each temperature at least 2 hours. 4-2.Cold start (kick off) into idle screen and each pattern shall switch to check the screen is stable under display and power off (or shutdown). The process finish it, we call one cycle. Before next cycle starting the period shall wait for 5 minutes. 4-3.Test temperature range - 10°C,0°C,10°C,50°C,60°C. Each temperature range has 5 cycles for test. 4-4.All abnormal phenomenon shall record</p>	
Thermal shock A	Type A Operation temp:-10°Cto+60°C,change specification:15°C/min at least 1hour after stabilization for 10 cycles	
Thermal shock B	Type B Non-operation temp:-40°Cto+75°C,change specification:15°C/min at least 1hour after stabilization for 10 cycles	
Shock	60G 6ms,±X,±Y,±Z 3times for each direction	
ESD	Contact:±4KV,Air:±8KV,150pF/330Ω	

The information contained herein is the exclusive property of SHANGHAI TIANMA MICRO-ELECTRONICS Corporation, and shall not be distributed, reproduced, or disclosed in whole or in part without prior written permission of SHANGHAI TIANMA MICRO-ELECTRONICS Corporation.



8 Mechanical Drawing



The information contained herein is the exclusive property of SHANGHAI TIANMA MICRO-ELECTRONICS Corporation, and shall not be distributed, reproduced, or disclosed in whole or in part without prior written permission of SHANGHAI TIANMA MICRO-ELECTRONICS Corporation.

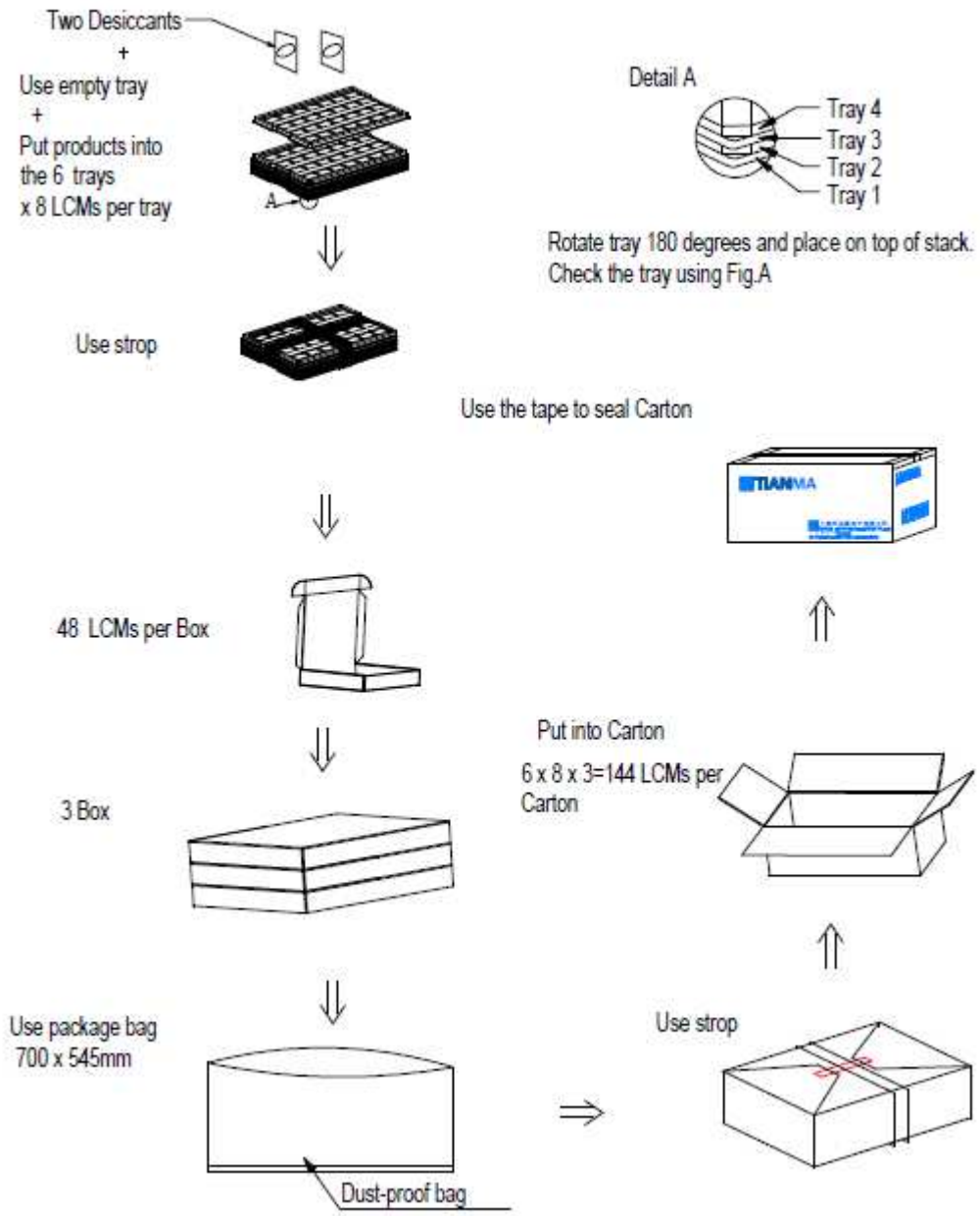


**9 Packing Drawing**

No	Item	Model (Material)	Dimensions(mm)	Unit Weight (Kg)	Quantity	Remark
1	LCM module	TM050NBH01	120.70x75.80x4.25	TBD	144	
2	Tray	PET (Transmit)	485x330x14.2	0.1556	21	
3	Dust-Proof Bag	PE	700x545x0.05	0.05	1	
4	BOX	Corrugated Paper	520x345x74	0.44	3	
5	Desiccant	Desiccant	45x35	0.0035	6	
6	Carton	Corrugated Paper	544x365x250	1.01	1	
7	Total weight	TBD				

Packing Specification and Quantity

(1) LCM quantity per tray: 4rowx2column = 8
(2) Total LCM quantity in Carton: No. of PET trays 8 x quantity per tray 18 = 144
Note: Please refer to the data from “estimated report about the dimension and stack of Carton “ about stacking carton





10 TFT- LCD Module Incoming Inspection Standard

10.1 Scope

The incoming inspection standards shall be applied to TFT-LCD Modules (hereinafter called "Modules") that supplied by Shanghai Tianma Micro-Electronics Corporation.

10.2 Incoming Inspection

The customer shall inspect the modules within twenty calendar days of the delivery date(the "inspection period)at its own cost. The result of the inspection(acceptance or rejection)shall be recorded in writing, and a copy of this writing will be promptly sent to the seller, If the results of the inspecting from buyer does not send to the seller within twenty calendar days of the delivery date. The modules shall be regards as acceptance.

Should the customer fail to notify the seller within the inspection period, the buyer's right to reject the modules. Shall be lapsed and the modules shall be deemed to have been accepted by the buyer.

10.3 Inspection Sampling Method

Lot size: Quantity per shipment lot per model

Sampling type: Normal inspection, Single sampling

Inspection level: II

Sampling table: MIL-STD-105D

Acceptable quality level (AQL)

Major defect: AQL=0.65

Minor defect: AQL=1.00

10.4 Inspection Conditions

10.4.1 ambient conditions:

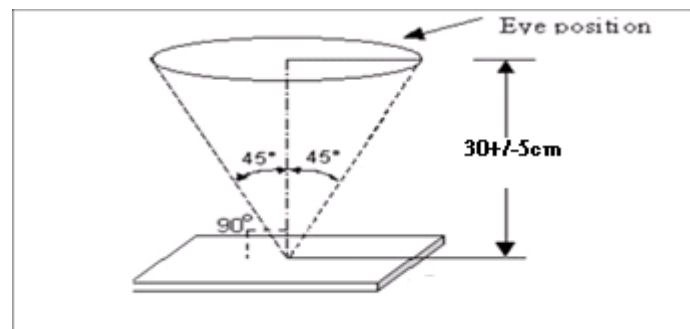
a. Temperature: Room temperature $25\pm 5^{\circ}\text{C}$

b. Humidity: $(60\pm 10)\% \text{RH}$

c. Illumination: Single fluorescent lamp non-directive (1000 to 1200 Lux)

10.4.2 The viewing distance between the LCD and the inspector's eyes shall be at least $30\pm 5 \text{ cm}$.

10.4.3 Viewing Angle: U/D: $45^{\circ}/45^{\circ}$, L/R: $45^{\circ}/45^{\circ}$



10.5 Inspection Criteria

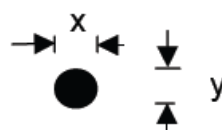
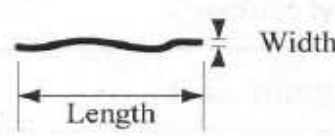
Defects are classified as major defects and minor defects according to the degree of defectiveness defined herein.



Major defect

Item	Inspection Standard
All Functional Defects	1) No display 2) Display abnormally 3) Short circuit 4) line defect
Missing	Missing function component
Crack	Glass Crack

Minor defect

No	Item	Inspection Standard	
1	Spot Defect (Including black spot and white spot)	$\varphi = (x+y) / 2$  <p>For black/white spot is defined</p>	
		Size φ (mm)	Acceptable Quantity
		$\varphi \leq 0.2$	Ignore
		$0.2 < \varphi \leq 0.3$	2
		$0.3 < \varphi$	Not allowed
2	Line Defect (Including black line, white line and scratch)	 <p>Define:</p>	
		Width(mm) Length(mm)	Acceptable Quantity
		$W \leq 0.03$	Ignore
		$0.03 < W \leq 0.1$ $0.8 < L \leq 2.0$	2
		$0.1 < W$ or $L > 2.0$	Not allowed
3	Polarizer Dent/Bubble	Size φ (mm)	Acceptable Quantity
		$\varphi \leq 0.1$	Ignore
		$0.1 < \varphi \leq 0.3$	2
		$0.3 < \varphi$	0



4	Electrical Dot Defect	Bright and black dot define:	
		Inspection pattern: Full white、 Full black、 Red、 green and blue screens	
		Item	Acceptable Quantity
		Black dot defect	2
Bright dot defect	1		
Total Dot	2		
5	Newton Ring	Sizeφ(mm)	Acceptable Quantity
		D <5mm	2

Note1: Dot defect is defined as the defective area of the dot area is larger than 50% of the dot area.

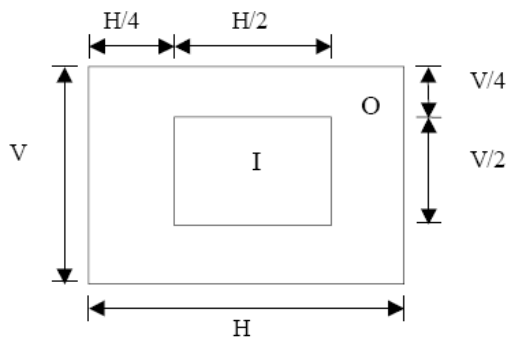
Note2: The distance between two dot defects (red, green, blue, and white) should be larger than 10mm.

Note3: The distance between black dot defects or black and bright dot defects should be more than 5mm apart.

Note4: The definitions of the inner display area and outer display area

I: Inner display area

O: Outer display area



Note5: Polarizer bubble is defined as the bubble appears on active display area. The defect of polarizer bubble shall be ignored if the polarizer bubble appears on the outside of active display area.

10.6 Mechanics specification

As for the outside dimension, weight of the modules, please refer to product specification for more details



11 Precautions for Use of LCD Modules

11.1 Handling Precautions

11.1.1 The display panel is made of glass. Do not subject it to a mechanical shock by dropping it from a high place, etc.

11.1.2 If the display panel is damaged and the liquid crystal substance inside it leaks out, be sure not to get any in your mouth, if the substance comes into contact with your skin or clothes, promptly wash it off using soap and water.

11.1.3 Do not apply excessive force to the display surface or the adjoining areas since this may cause the color tone to vary.

11.1.4 The polarizer covering the display surface of the LCD module is soft and easily scratched. Handle this polarizer carefully.

11.1.5 If the display surface is contaminated, breathe on the surface and gently wipe it with a soft dry cloth. If still not completely clear, moisten cloth with one of the following solvents:

- Isopropyl alcohol
- Ethyl alcohol

Solvents other than those mentioned above may damage the polarizer. Especially, do not use the following:

- Water
- Ketone
- Aromatic solvents

11.1.6 Do not attempt to disassemble the LCD Module.

11.1.7 If the logic circuit power is off, do not apply the input signals.

11.1.8 To prevent destruction of the elements by static electricity, be careful to maintain an optimum work environment.

11.1.8.1 Be sure to ground the body when handling the LCD Modules.

11.1.8.2 Tools required for assembly, such as soldering irons, must be properly ground.

11.1.8.3 To reduce the amount of static electricity generated, do not conduct assembly and other work under dry conditions.

11.1.8.4 The LCD Module is coated with a film to protect the display surface. Be care when peeling off this protective film since static electricity may be generated.

11.2 Storage precautions

11.2.1 When storing the LCD modules, avoid exposure to direct sunlight or to the light of fluorescent lamps.

11.2.2 The LCD modules should be stored under the storage temperature range. If the LCD modules will be stored for a long time, the recommend condition is:

Temperature : 0°C ~ 40°C Relatively humidity: ≤80%

11.2.3 The LCD modules should be stored in the room without acid, alkali and harmful gas.

11.3 Transportation Precautions

11.3.1 The LCD modules should be no falling and violent shocking during transportation, and also should avoid excessive press, water, damp and sunshine.