

# TMR3004

## High Magnetic Field Dual-axis TMR Angle Sensor

### Description

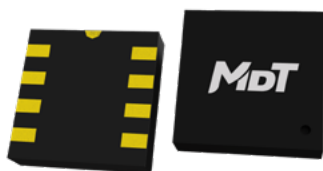
The output voltages of the dual-axis TMR3004 TMR high-field angle sensor are proportional to the sine and cosine of the angle of a magnetic field applied parallel to the surface of the TMR3004. These sine and cosine signals are provided by two orthogonal full bridge TMR angle sensors. Each full bridge TMR angle sensor includes four unique high-field TMR sensor arms connected in a push-pull arrangement to produce a best-in-class peak-to-peak signal as large as 90% of the supply voltage, eliminating the need for amplification in many applications, while maintaining low error as the magnetic field is varied over a range of 1 kGs. Additionally, the TMR full bridge technology accurately compensates the output against changes in ambient temperature. This sensor is assembled in packaging form factors of compact LGA8L (3 mm × 3 mm × 0.75 mm).

### Features and Benefits

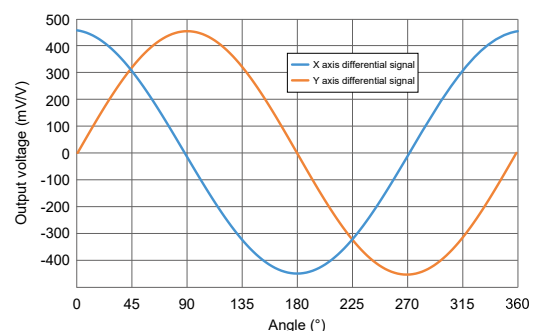
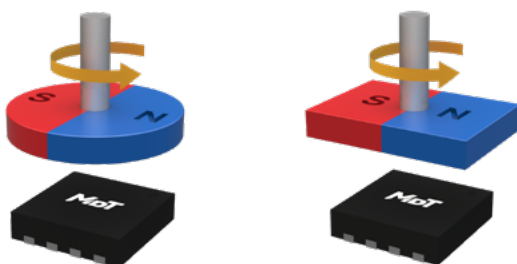
- Tunneling magnetoresistance (TMR) technology
- Wide 1 kGs operating range provides highest air gap Insensitivity
- Excellent immunity to environmental magnetic disturbance
- Large output signal without amplification
- High accuracy dual-axis 0~360° angle measurement
- Compatible with a wide range of supply voltages
- Fast Response for High-Speed Applications
- Excellent thermal stability
- Compact LGA package
- RoHS & REACH compliant

### Applications

- Rotary position sensors
- Rotary encoders
- Contactless potentiometers
- Valve position sensors
- Knob position sensors



LGA8L



## Selection Guide

Part Number	Angle range	Bridge resistance	Peak voltage	Angular error	Package	Packing Form
TMR3004G	0~360°	15 kΩ	480 mV/V	1.5°	LGA8L	Tape & Reel

## Catalogue

1. Functional Block Diagram.....	03
2. Operating Principle.....	03
3. Pin Configuration.....	03
4. Absolute Maximum Ratings.....	04
5. Electrical Specifications.....	04
6. Dimensions.....	05

### 1. Functional Block Diagram

The TMR3004 angle sensors use dual Wheatstone bridges of high sensitivity TMR sensing elements to increase the sensors' output signal amplitude with enhanced temperature characteristic and anti-interference performance as shown in Figure 1.

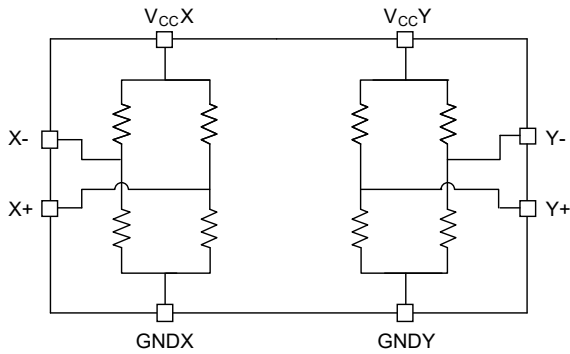


Figure 1. Block diagram

### 2. Operating Principle

The resistance value of the sensing elements changes with the target magnetic field, and the sensing direction is parallel to the chip surface as shown in Figure 2.

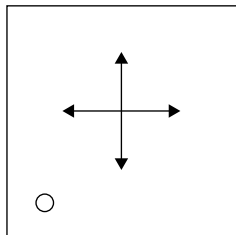


Figure 2. Sensing direction

A small dipole magnet, placed above the TMR3004, can provide a magnetic field in any desired orientation parallel to the plane of the TMR3004 package. When the Angle of the applied magnetic field changes, the output voltage waveform of the sensor is a cosine curve, thereby providing a true 360° measure of the orientation of the magnetic field.

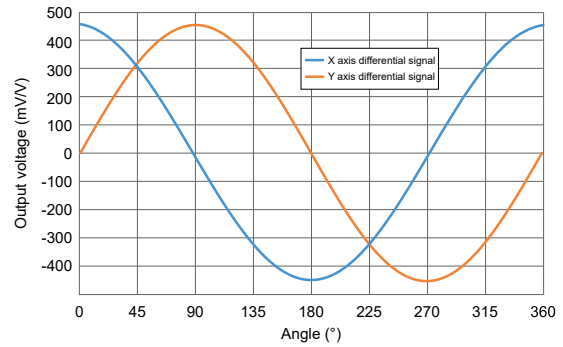


Figure 3. Typical output curve

### 3. Pin Configuration

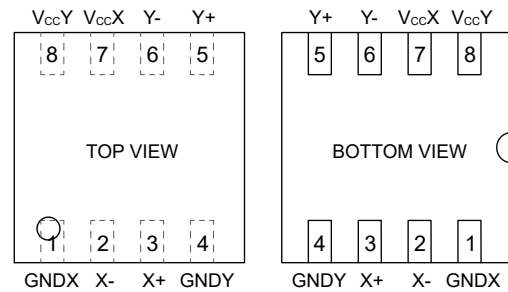


Figure 4. Pin configuration (LGA8L)

Number	Name	Function
1	GNDX	Ground (X axis)
2	X-	Analog Differential Output 2 (X axis)
3	X+	Analog Differential Output 1 (X axis)
4	GNDY	Ground (Y axis)
5	Y+	Analog Differential Output1 (Y axis)
6	Y-	Analog Differential Output2 (Y axis)
7	V <sub>cc</sub> X	Supply Voltage (X axis)
8	V <sub>cc</sub> Y	Supply Voltage (Y axis)

## 4. Absolute Maximum Ratings

Parameters	Symbol	Min.	Max.	Unit
Supply voltage	$V_{CC}$	-	7	V
Magnetic flux density	$B$	-	3000	Gs
ESD performance (HBM)	$V_{ESD}$	-	4000	V
Operating ambient temperature	$T_A$	-40	85	°C
Storage ambient temperature	$T_{STG}$	-40	105	°C

## 5. Electrical Specifications

$V_{CC} = 1\text{ V}$ ,  $T_A = 25\text{ °C}$ , Differential Output

Parameters	Symbol	Condition	Min.	Typ.	Max.	Unit
Supply voltage	$V_{CC}$	operating	-	3.3	7	V
Bridge resistance	$R_B$	operating	10	15 <sup>1)</sup>	20	kΩ
Peak voltage	$V_{PEAK}$	operating	-	480	-	mV/V
Offset voltage	$V_{OFFSET}$	operating	-10	-	10	mV/V
Magnetic field	$H_{ext}$	operating	150	500	1100	Gs
Angular error	$\Delta\theta$	operating	-	1.5 <sup>2)</sup>	-	°
Operation coefficient of peak voltage	$TCV_{PEAK}$	$T_A = -40\text{ °C to }85\text{ °C}$	-	-990	-	PPM/°C

Notes:

- 1) Custom sensor resistance may be available upon request. Bridge resistance refers to the resistance between  $V_{CC}X-GNDX$  and  $V_{CC}Y-GNDY$ .
- 2) Angle error is defined by zero-to-peak. Analog output accuracy can be improved by calibration.

## 6. Dimensions

### LGA8L Package

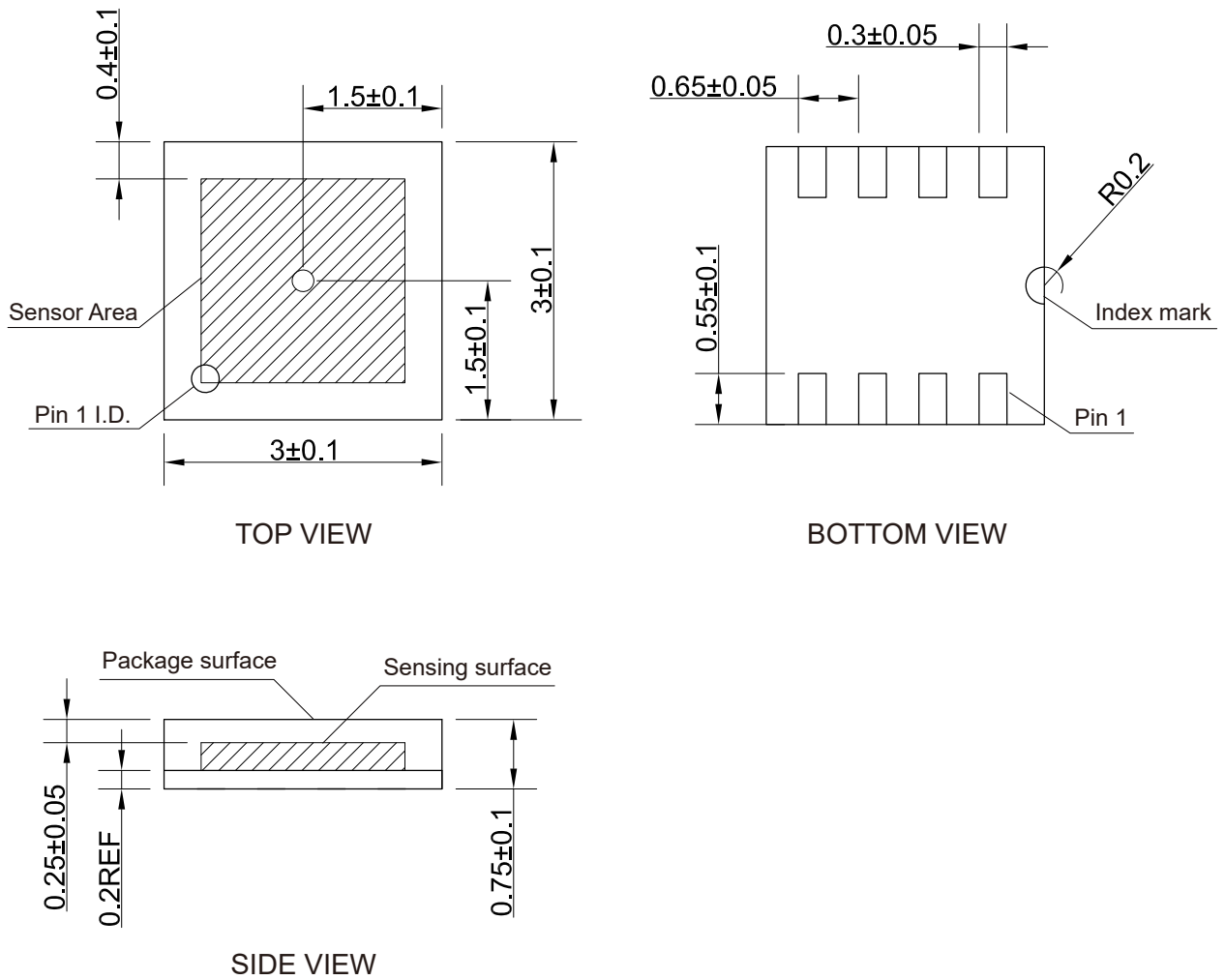


Figure 5. Package outline of LGA8L (unit: mm)

## Copyright © 2023 by MultiDimension Technology Co., Ltd.

Information furnished herein by MultiDimension Technology Co., Ltd. (hereinafter MDT) is believed to be accurate and reliable. However, MDT disclaims any and all warranties and liabilities of any kind, with respect to any examples, hints or any performance or use of technical data as described herein and/or any information regarding the application of the product, including without limitation warranties of non-infringement of intellectual property rights of any third party. This document neither conveys nor implies any license under patent or other industrial or intellectual property rights. Customer or any third-party must further determine the suitability of the MDT products for its applications to avoid the applications default of customer or third-party. MDT accept no liability in this respect.

MDT does not assume any liabilities of any indirect, incidental, punitive, special or consequential damages (including without limitation of lost profits, lost savings, business interruption, costs related to the removal or replacement of any products or rework charges) whether or not such damages are based on tort (including negligence), warranty, breach of contract or any other legal theory. Notwithstanding any damages that customer might incur for any reason whatsoever, MDT's aggregate and cumulative liability towards customer for the products described herein shall be limited in accordance with the terms and conditions of commercial sale of MDT.

Absolute maximum ratings are the extreme limits the device will withstand without damage to the MDT product. However, the electrical and mechanical characteristics are not guaranteed as the maximum limits (above recommended operating conditions) are approached. MDT disclaims any and all warranties and liabilities of the MDT product will operate at absolute maximum ratings.

Specifications may change without notice.

Please download latest document from our official website [www.dowaytech.com/en](http://www.dowaytech.com/en).

## Recycling

The product(s) in this document need to be handed over to a qualified solid waste management services company for recycling in accordance with relevant regulations on waste classification after the end of the product(s) life.



No.2 Guangdong Road, Zhangjiagang Free Trade Zone, Jiangsu, China

Web: [www.dowaytech.com/en](http://www.dowaytech.com/en) E-mail: [info@dowaytech.com](mailto:info@dowaytech.com)

