



十速

# TMU3132LV

**USB Full Speed General Purpose IC**

***DATA SHEET***

***Rev 1.7***

**tenx** reserves the right to change or discontinue the manual and online documentation to this product herein to improve reliability, function or design without further notice. **tenx** does not assume any liability arising out of the application or use of any product or circuit described herein; neither does it convey any license under its patent rights nor the rights of others. **tenx** products are not designed, intended, or authorized for use in life support appliances, devices, or systems. If Buyer purchases or uses tenx products for any such unintended or unauthorized application, Buyer shall indemnify and hold tenx and its officers, employees, subsidiaries, affiliates and distributors harmless against all claims, cost, damages, and expenses, and reasonable attorney fees arising out of, directly or indirectly, any claim of personal injury or death associated with such unintended or unauthorized use even if such claim alleges that tenx was negligent regarding the design or manufacture of the part.

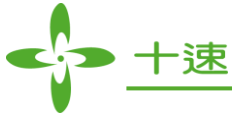
---

## AMENDMENT HISTORY

Version	Date	Description
D1.0	Jun, 2012	New release.
D1.1	Apr, 2013	Modify Pin Summary table (p3).
1.5	Aug, 2015	1. Modify Page 7/9/46/47 Add SOP-8 package information. 2. Modify Page 10 System Block Diagram.
1.6	Feb, 2016	Page 7/9 Add SOP16, QFN20 Pin Assignment/Summary.
1.7	Mar, 2017	page 50 Add QFN-20 Package Dimension.

# CONTENTS

<b>AMENDMENT HISTORY</b> .....	<b>2</b>
<b>CONTENTS</b> .....	<b>3</b>
<b>SPEC OVERVIEW</b> .....	<b>5</b>
<b>FEATURES</b> .....	<b>6</b>
<b>PIN ASSIGNMENT</b> .....	<b>7</b>
<b>PIN DESCRIPTION</b> .....	<b>8</b>
<b>PIN SUMMARY</b> .....	<b>9</b>
<b>BLOCK DIAGRAM</b> .....	<b>10</b>
<b>FUNCTIONAL DESCRIPTION</b> .....	<b>11</b>
<b>1. CPU Core</b> .....	<b>11</b>
1.1 Clock Scheme and Instruction Cycle .....	11
1.2 CPU clock control register .....	11
1.3 Programming Counter (PC) and Stack.....	12
1.4 ALU and Working (W) Register.....	12
1.5 Addressing Mode .....	13
1.6 Instruction Set .....	14
1.7 Instruction Table .....	15
1.8 Addressing mode.....	16
<b>2. Control Registers</b> .....	<b>26</b>
2.1 F-Plane Table .....	26
2.2 F-Plane Description.....	27
2.3 R-Plane Register Table .....	29
2.4 R-Plane Description .....	30
<b>3. USB Engine</b> .....	<b>32</b>
3.1 USB Device Address.....	32
3.2 Endpoint 0 receive (SET0/OUT0) .....	32
3.3 Endpoint 0 transmit (TX0) .....	33
3.4 Endpoint 1/2 transmit (TX1/2).....	33
3.5 Endpoint 3 transmit (TX3) .....	33
3.6 USB Endpoint 4 receive (RC4).....	33
3.7 USB Control and Status .....	34
3.8 Suspend and Resume.....	34
3.9 Interrupt Vector .....	34
<b>4. Wakeup Timer and Watch Dog Timer</b> .....	<b>35</b>
<b>5. Timer</b> .....	<b>36</b>
5.1 Timer0: 8-bit Timer with Pre-scale (PSC).....	36
<b>6. SPI (Serial Peripheral Interface)</b> .....	<b>38</b>



<b>7. I/O Port.....</b>	<b>39</b>
7.1 PA0-7 .....	39
7.2 PB0.....	40
7.3 PB3 (DP) and PB2 (DM) .....	41
7.4 PE0-4.....	42
<b>8. Application.....</b>	<b>43</b>
<b>ELECTRICAL CHARACTERISTICS .....</b>	<b>44</b>
<b>Absolute Maximum Ratings.....</b>	<b>44</b>
<b>Recommended Operating Condition.....</b>	<b>44</b>
<b>DC Characteristics .....</b>	<b>45</b>
<b>AC Characteristics .....</b>	<b>45</b>
<b>ORDERING INFORMATION .....</b>	<b>46</b>

## SPEC OVERVIEW

### Microcontroller Features Table

CPU	ROM	RAM Bytes	OSC Dual Source	Instruction		Stack level	Interrupt vector	Timers	POR
				Set	Time				
RISC	MTP	160 + 128	IRC 48 MHz	37	2T	8	17	T0	2.0V
	4k*14								

### IRC Frequency Features Table

Operation Frequency	Internal RC 48 MHz	12 MHz	6 MHz	3 MHz	1.5 MHz
USB mode (USB Plug in)	+/- 0.25%	+/- 0.25%	+/- 0.25%	--	--

### Power Features Table

Operation Voltage	Operation Current (12 MHz)	Operation Current (6 MHz)	Operation Current (3 MHz)	Operation Current (1.5 MHz)	Operation Temperature
4.5 ~ 5.5 V	15 mA (WKT ON)	7 mA (WKT ON)	5 mA (WKT ON)	4 mA (WKT ON)	-40 to + 85

### Peripheral Features Table

USB Control	Interrupt Mode	Bulk Mode	SPI Interface
EP0 each 8-Byte	EP1 & EP2 8-Byte	EP3 & EP4 64-Byte	Master only
			DMA R/W

### TMU313 Series Family Types

P/N	Program ROM	RAM Bytes	EP	GPIO	PW M	Touch Key	I80	CPU Clock	SPI Master
TMU3130	8K*14 Flash	160 + 128	5	36	1	5	Yes	IRC/6 MHz	Yes
TMU3131	6K*14 MTP	160 + 128	5	17	1	5	--	IRC	Yes
TMU3132LV	4K*14 MTP	160 + 128	5	16	--	--	--	IRC	Yes
TMU3132MS	4K*14 MASK	160 + 128	5	16	--	--	--	IRC	Yes

## FEATURES

### RISC CPU:

- ◆ **Only 37 instructions**
- ◆ **Instruction Execution Time**
  - 2-cycle instructions except branch
- ◆ **Operating clock**
  - Fast Clock:
    - Internal 48 MHz PLL
    - FIRC (Internal RC 48 MHz +/-2.5%)
  - CPU Clock control:
    - 12 MHz/6 MHz/3 MHz/1.5 MHz
- ◆ **4Kx14 internal flash Program Memory**
- ◆ **Memory**
  - 160 bytes on F-plane
  - 128 bytes on R-plane
  - 8 bytes \*5 on R-plane
- ◆ **8-level Stack**
- ◆ **Interrupt**
  - 16 kinds of interrupt vector
    - USB EP0 SET0 Receive Interrupt
    - USB EP0 OUT Receive Interrupt
    - USB EP0 Transmit Interrupt
    - USB EP1 Transmit Interrupt
    - USB EP2 Transmit Interrupt
    - USB Suspend Interrupt
    - USB EP3 Bulk Transmit Interrupt
    - USB EP4 Bulk Transmit Interrupt
    - USB Bus Reset Interrupt
    - USB Resume Interrupt
    - Wake-up Timer Interrupt
    - Timer0 Interrupt
    - PB0 External I/O Interrupt
    - VDD5V Rise interrupt

### Power Features

- ◆ **Operation Voltage**
  - Low Voltage Reset Voltage to 5.5V
  - Maximum Operation range 2.1V to 5.5V
    - Built-in 3.3V Regulator covers 4.75 to 5.25V
  - Chip Operating Voltage range 2.1 to 3.6V
  - USB Operating Voltage range 4.75 to 5.25V

### ◆ Operation Current

USB mode (Internal 3.3V Regulator used)

- Normal mode
  - 5V@ 12 MHz, 13.9 mA typical
  - 5V@ 6 MHz, 6.8 mA typical
  - 5V@ 3 MHz, 4.8 mA typical
  - 5V@ 1.5 MHz, 3.9 mA typical
- Suspend mode
  - 5V@ 12 MHz, 350 uA typical
- Power down mode
  - 5V@ 1 uA typical

### ◆ H/W Reset

- External active low reset (RSTN)
- Build-in Power-On Reset (POR)
- Low Voltage Reset - 2.1V (LVR)
- Watchdog Reset (WDT)

### Peripheral Features

#### ◆ I/O Port:

- Maximum 16 programmable I/O pins
- Pseudo-Open-Drain Output (P.O.D.)
- Open-Drain Output (O.D.)
- CMOS Push-Pull Output (P.P.)
- Schmitt Trigger Input

#### ◆ Timers

- Timer0 is 8-bit with 8-bit prescaler, Counter/Capture/Interrupt function

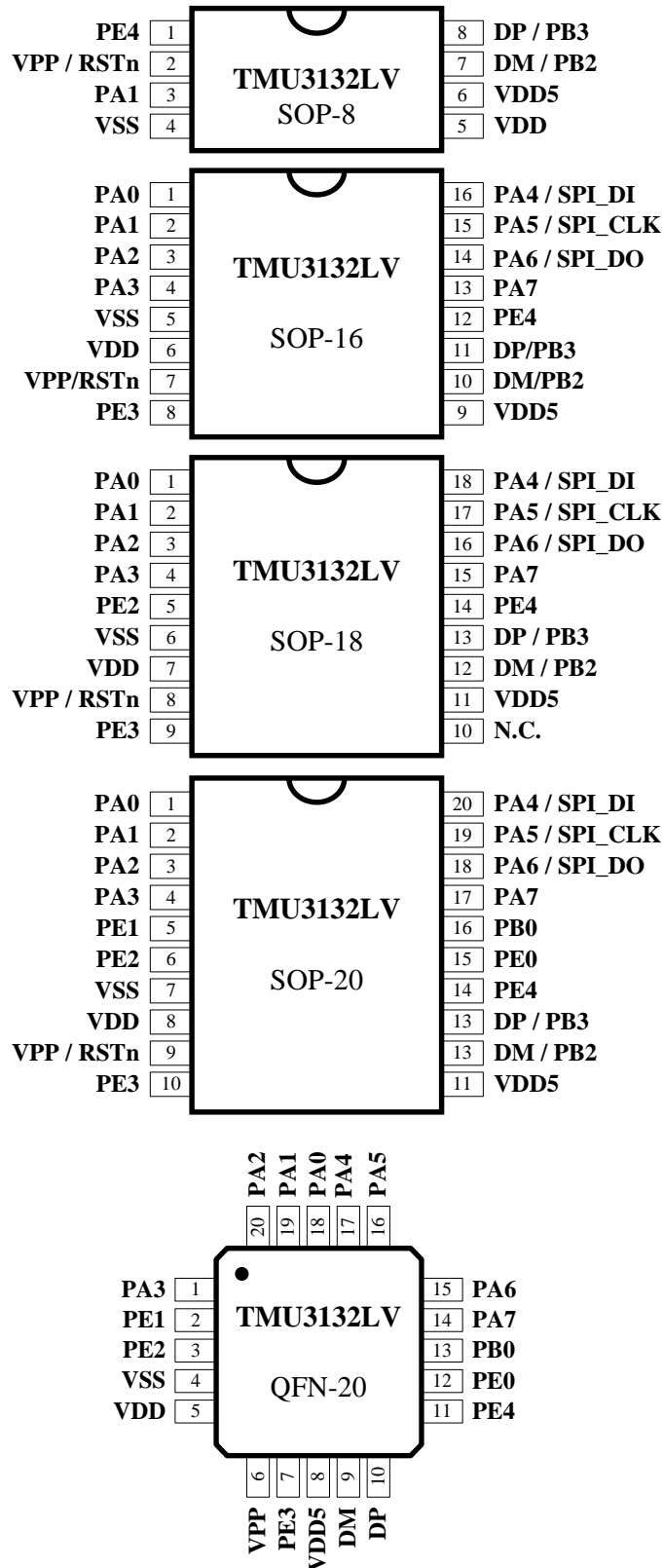
#### ◆ Watchdog Timer

- Clocked by on-chip oscillator with 4 adjustable Reset/Interrupt time durations (112 ms/56 ms /28 ms/14 ms)
- Wake-up Timer (896 ms/448 ms/224 ms/112 ms)

#### ◆ SPI Interface

- Master only
- Programmable transmit bit rate
- Serial clock phase and polarity options
- MSB-first or LSB-first selectable

## PIN ASSIGNMENT



## PIN DESCRIPTION

Name	In/Out	Pin Description
VDD5	P	PC5V Power input
VSS	P	Ground
VDD	O	3.3V regulator output
VPP/RSTN	I	Programming High power/Chip reset pin
PA[7]	I/O	General purpose I/O (Pseudo open-drain) ;
PA[6]/SDO	I/O	General purpose I/O (Pseudo open-drain) ; SPI Dout
PA[5]/SCLK	I/O	General purpose I/O (Pseudo open-drain) ; SPI Clk
PA[4]/SDI	I/O	General purpose I/O (Pseudo open-drain) ; SPI Din
PA[3]	I/O	General purpose I/O (Pseudo open-drain)
PA[2]	I/O	General purpose I/O (Pseudo open-drain)
PA[1]	I/O	General purpose I/O (Pseudo open-drain)
PA[0]	I/O	General purpose I/O (Pseudo open-drain)
DP/PB[3]	I/O	USB positive signal/General purpose I/O
DM/PB[2]	I/O	USB negative signal/General purpose I/O
PB[0]	I/O	General purpose I/O (open-drain)
PE[4:0]	I/O	General purpose I/O (Pseudo open-drain) ; PE[3] can configured as clock output (6 MHz/12 MHz)

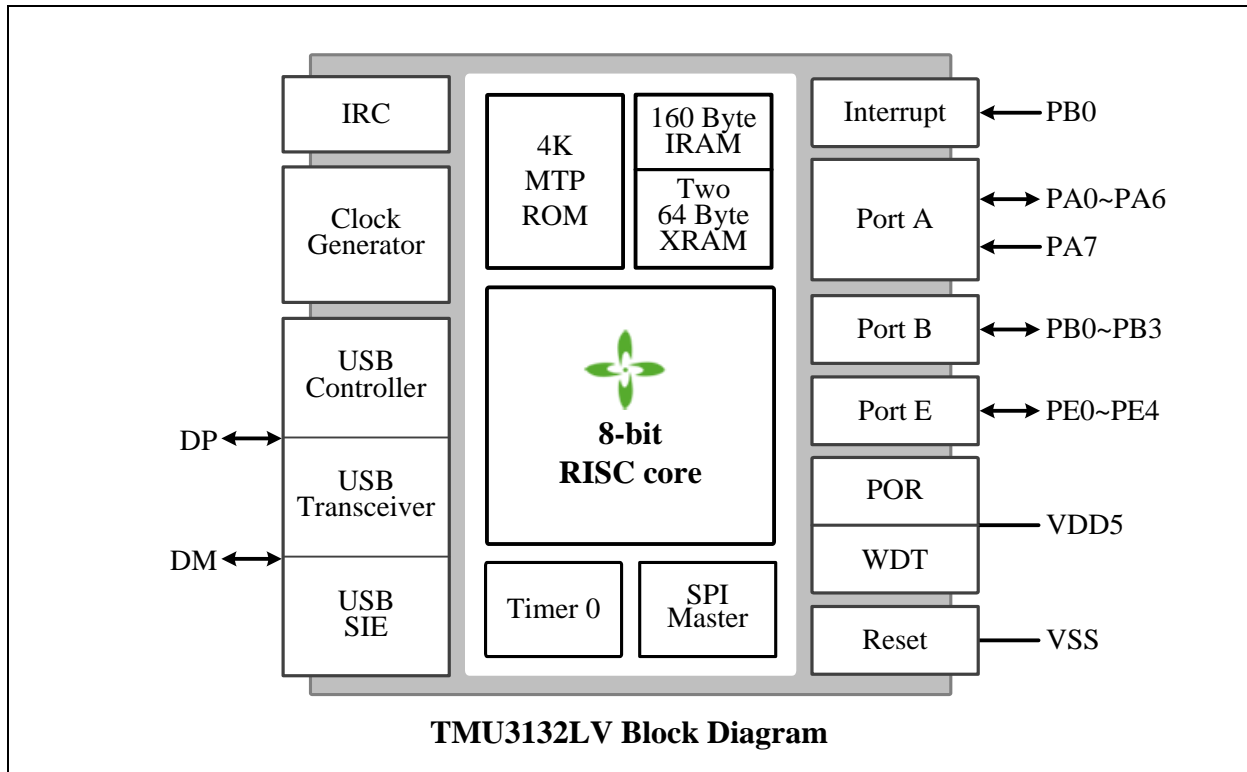


**PIN SUMMARY**

Pin number					Pin Name	Type	Input		Output			Func. after reset	Alternate Function	Misc
SOP-20	QFN-20	SOP-18	SOP-16	SOP-8			Enable Pull-up	Ext. Interrupt	O.D.	P.O.D.	P.P.		SPI	
3	20	3	3		PA2	I/O	●			●	●	PA2		
2	19	2	2	3	PA1	I/O	●			●	●	PA1		
1	18	1	1		PA0	I/O	●			●	●	PA0		
9	6	8	7	2	VPP / RSTN	I						RSTN		Reset
4	1	4	4		PA3	I/O	●			●	●	PA3		
15	12				PE0	I/O	●			●	●	PE0		
5	2				PE1	I/O	●			●	●	PE1		
6	3	5			PE2	I/O	●			●	●	PE2		
10	7	9	8		CLKO / PE3	I/O	●			●	●	PE3		Clock Output
14	11	14	12	1	PE4	I/O	●			●	●	PE4		
17	14	15	13		PA7	I/O	●			●	●	PA7		
18	15	16	14		SDO / PA6	I/O	●			●	●	PA6	●	
19	16	17	15		SCLK / PA5	I/O	●			●	●	PA5	●	
20	17	18	16		SDI / PA4	I/O	●			●	●	PA4	●	
8	5	7	6	5	VDD	P						V33		V33 Output
11	8	11	9	6	VDD5	P						VDD5		
16	13				PB0	I/O		●	●		●	PB0		
13	10	13	11	8	DP / PB3	I/O	●		●		●	DP		USB
12	9	12	10	7	DM // PB2	I/O	●		●		●	DM		USB
7	4	6	5	4	VSS	P								

**Symbol: O.D.** = Open Drain  
**P.O.D.** = Pseudo Open Drain  
**P.P.** = Push-Pull Output

## BLOCK DIAGRAM



## FUNCTIONAL DESCRIPTION

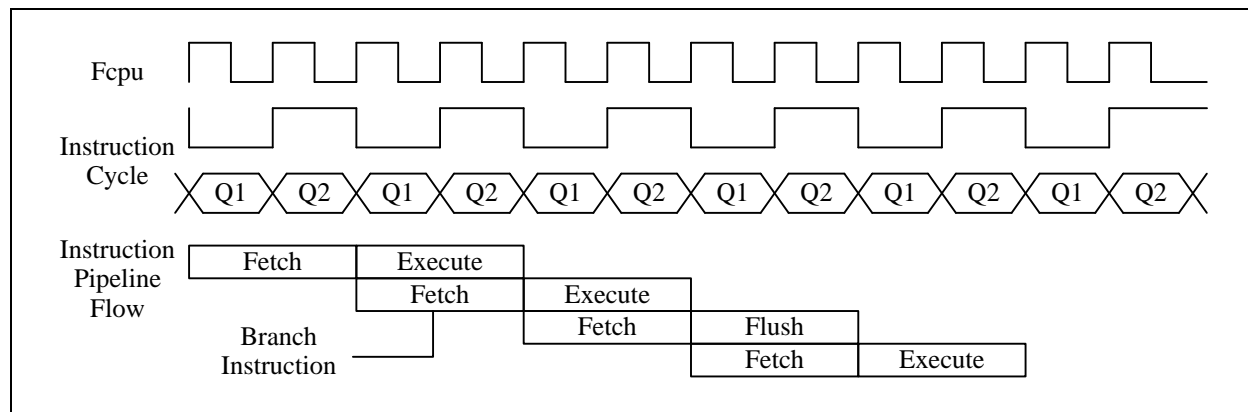
### 1. CPU Core

#### 1.1 Clock Scheme and Instruction Cycle

TMU3132LV has only chip clock sources as following:

$F_{rc}$ : Internal RC oscillator 24 MHz clock

$F_{rc}$  can be synchronized by USB signals and popup to 48 MHz clock ( $F_{48m}$ ) for USB module.  $F_{rc}$  can be divided to 12 MHz clock as CPU clock. The CPU clock is internally divided by two to generate Q1 state and Q2 state for each instruction cycle. The Programming Counter (PC) is updated at Q1 and the instruction is fetched from program ROM and latched into the instruction register in Q2. It is then decoded and executed during the following Q1-Q2 cycle. Branch instructions take two cycles since the fetch instruction is ‘flushed’ from the pipeline, while the new instruction is being fetched and then executed.



#### 1.2 CPU clock control register

CPU clock speed selection: The CPU clock source is Internal RC and it will be divided to 12 MHz, 6 MHz, 3 MHz or 1.5 MHz by firmware setting.

R07 [1:0] is used to select the different speed

R07 [1:0]=0 select 12 MHz

R07 [1:0]=1 select 6 MHz

R07 [1:0]=2 select 3 MHz

R07 [1:0]=3 select 1.5 MHz

### 1.3 Programming Counter (PC) and Stack

The Programming Counter is 12-bit wide capable of addressing a 4K x 14 program ROM. As a program instruction is executed, the PC will contain the address of the next program instruction to be executed. The PC value is normally increased by one except the followings. The Reset Vector (000h) and the Interrupt Vectors (from 001h to 00dh) are provided for PC initialization and Interrupt. For CALL/GOTO instructions, PC loads the lower 11 bits address from instruction word. For RET/RETI/RETLW instructions, PC retrieves its content from the top level STACK. For the other instructions updating PC [7:0], the PC [11:8] keeps unchanged. The STACK is 12-bit wide and 8-level in depth. The CALL instruction and Hardware interrupt will push STACK level in order. While the RET/RETI/RETLW instruction pops the STACK level in order.

### 1.4 ALU and Working (W) Register

The ALU is 8-bit wide and capable of addition, subtraction, shift and logical operations. In two-operand instructions, typically one operand is the W register, which is an 8-bit non-addressable register used for ALU operations. The other operand is either a file register or an immediate constant. In single operand instructions, the operand is either W register or a file register. Depending on the instruction executed, the ALU may affect the values of Carry (C), Digit Carry (DC), and Zero (Z) Flags in the STATUS register. The C and DC flags operate as a /Borrow and /Digit Borrow, respectively, in subtraction.

Note: /Borrow represents inverted of Borrow register.

/Digit Borrow represents inverted of Digit Borrow register.

### 1.5 Addressing Mode

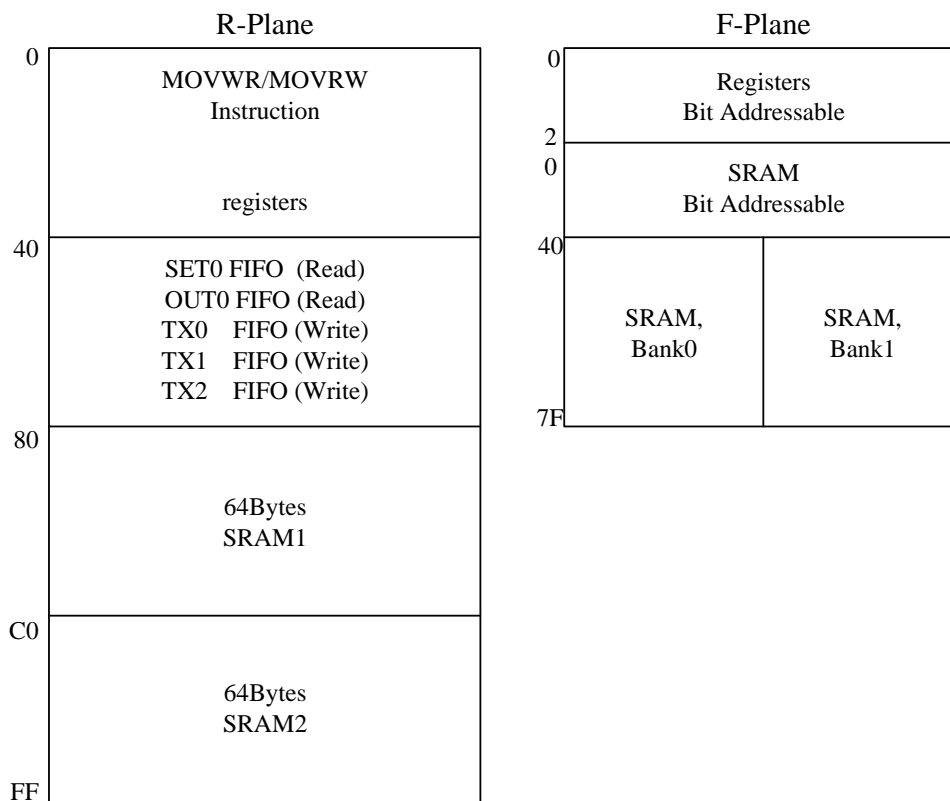
There are two Data Memory Planes in CPU, R-Plane and F-Plane. The lower locations of F-Plane are reserved for the SFR. Above the SFR is General Purpose Data Memory, implemented as static RAM. F-Plane can be addressed directly or indirectly. Indirect Addressing is made by INDF register. The INDF register is not a physical register. Addressing INDF actually addresses the register whose address is contained in the FSR register (FSR is a pointer). The first half of F-Plane is bit-addressable, while the second half of F-Plane is not bit-addressable. R-plane can be indirect accessed via RSR register.

- 4K x 14 program MTP.
- 160-byte SRAM (F-plane) is addressed from 0x20 to 0x7F. The lower 32-byte (0x20 ~ 0x3f) is bit addressable. The higher address (0x40 ~ 0x7F) is separated to two banks which can be selected by setting register F03[5]. F03[5]=0 is used to select Bank0, F03[5]=1 is used to select Bank1.
- Two 64-bytes RAM (R-plane).
- Five 8-byte USB FIFOs are allocated in R-plane.

Example: Initial value: [F30h]=12h

```

MOVLW    30h    ; W=30h
MOVWF    FSR
MOVFW    INDF   ; W=12h
CLRWF    INDF
MOVWF    INDF   ; [F30h]=00h
INCF     FSR,F  ; FSR=31h
    
```



## 1.6 Instruction Set

Each instruction is a 14-bit word divided into an OPCODE, which specifies the instruction type, and one or more operands, which further specify the operation of the instruction. The instructions can be categorized as byte-oriented, bit-oriented and literal operations list in the following table.

For byte-oriented instructions, “f” or “r” represents the address designator and “d” represents the destination designator. The address designator is used to specify which address in Program memory is to be used by the instruction. The destination designator specifies where the result of the operation is to be placed. If “d” is “0”, the result is placed in the W register. If “d” is “1”, the result is placed in the address specified in the instruction.

For bit-oriented instructions, “b” represents a bit field designator, which selects the number of the bit affected by the operation, while “f” represents the address designator. For literal operations, “k” represents the literal or constant value.

<b>Field/Legend</b>	<b>Description</b>
f	F-Plane Register File Address
r	R-Plane Register File Address
b	Bit Address
k	Literal. Constant data or label
d	Destination selection field, 0: Working register, 1: Register file
W	Working Register
Z	Zero Flag
C	Carry Flag
DC	Decimal Carry Flag
PC	Program Counter
TOS	Top Of Stack
<b>Field/Legend</b>	<b>Description</b>
GIE	Global Interrupt Enable Flag (i-Flag)
[]	Option Field
()	Contents
.	Bit Field
B	Before
A	After
←	Assign direction

## 1.7 Instruction Table

Mnemonic		Op Code	Cycle	Flag Affect	Description
<b>Byte-Oriented File Register Instruction</b>					
ADDWF	f, d	00 0111 dfff ffff	1	C, DC, Z	Add W to f
ANDWF	f, d	00 0101 dfff ffff	1	Z	AND W to f
CLRF	f	00 0001 1fff ffff	1	Z	Clear f
CLRWF		00 0001 0100 0000	1	Z	Clear W
COMF	f, d	00 1001 dfff ffff	1	Z	Invert F bit by bit
DECF	f, d	00 0011 dfff ffff	1	Z	Decrement of f
DECFSZ	f, d	00 1011 dfff ffff	1 or 2	-	Decrease f, skip if zero
INCF	f, d	00 1010 dfff ffff	1	Z	Increment of f
INCFSZ	f, d	00 1111 dfff ffff	1 or 2	-	Increase f, skip if zero
IORWF	f, d	00 0100 dfff ffff	1	Z	OR W to f
MOVWF	f	00 1000 0fff ffff	1	-	Move f to W
MOVWF	f	00 0000 1fff ffff	1	-	Move W to f
MOVRW	r	01 1111 rrrr rrrr	1	-	Move r to W
MOVWR	r	01 1110 rrrr rrrr	1	-	Move W to r
RLF	f, d	00 1101 dfff ffff	1	C	F rotate to left
RRF	f, d	00 1100 dfff ffff	1	C	F rotate to right
SUBWF	f, d	00 0010 dfff ffff	1	C, DC, Z	Substrate W from f
SWAPF	f, d	00 1110 dfff ffff	1	-	Swap high and low nibble of f
TESTZ	f, d	00 1000 dfff ffff	1	Z	Test f if zero
XORWF	f, d	00 0110 dfff ffff	1	Z	<u>XOR</u> W to f
<b>Bit-Oriented File Register Instruction</b>					
BCF	f, b	01 000b bfff ffff	1	-	Bit clear f
BSF	f, b	01 001b bfff ffff	1	-	Bit set f
BTFSC	f, b	01 010b bfff ffff	1 or 2	-	Bit test f, skip if clear
BTFSS	f, b	01 011b bfff ffff	1 or 2	-	Bit test f, skip if set
<b>Literal and Control Instruction</b>					
ADDLW	k	01 1100 kkkk kkkk	1	C, DC, Z	Add literal to W
ANDLW	k	01 1011 kkkk kkkk	1	Z	AND literal to W
XORLW	K	01 1101 kkkk kkkk	1	Z	XOR literal to W
CALL	k	10 kkkk kkkk kkkk	2	-	Subroutine call
CLRWDI		01 1110 0000 0011	1	-	Clear watchdog timer
GOTO	k	11 kkkk kkkk kkkk	2	-	Unconditional branch
IORLW	k	01 1010 kkkk kkkk	1	Z	OR literal to W
MOVLW	k	01 1001 kkkk kkkk	1	-	Move literal to W
NOP		00 0000 0000 0000	1	-	No operation
RET		00 0000 0100 0000	2	-	Return from CALL
RETI		00 0000 0110 0000	2	-	Return from interrupt
RETLW	k	01 1000 kkkk kkkk	2	-	Return with literal to W
SLEEP		01 1110 0000 0011	1	-	Power down

**1.8 Addressing mode**

<b>ADDLW</b>	<b>Add Literal “k” and W</b>	
Syntax	ADDLW k	
Operands	k : 00h ~ FFh	
Operation	$(W) \leftarrow (W) + k$	
Status Affected	C, DC, Z	
OP-Code	01 1100 kkkk kkkk	
Description	The contents of the W register are added to the eight-bit literal ‘k’ and the result is placed in the W register.	
Cycle	1	
Example	ADDLW 0x15	B : W = 0x10 A : W = 0x25

<b>ADDWF</b>	<b>Add W and “f”</b>	
Syntax	ADDWF f [,d]	
Operands	f : 00h ~ 7Fh d : 0, 1	
Operation	$(\text{Destination}) \leftarrow (W) + (f)$	
Status Affected	C, DC, Z	
OP-Code	00 0111 dfff ffff	
Description	Add the contents of the W register with register ‘f’. If ‘d’ is 0, the result is stored in the W register. If ‘d’ is 1, the result is stored back in register ‘f’.	
Cycle	1	
Example	ADDWF FSR, 0	B : W = 0x17, FSR = 0xC2 A : W = 0xD9, FSR = 0xC2

<b>ANDLW</b>	<b>Logical AND Literal "k" with W</b>	
Syntax	ANDLW k	
Operands	k : 00h ~ FFh	
Operation	$(W) \leftarrow (W) \text{ ‘AND’ } k$	
Status Affected	Z	
OP-Code	01 1011 kkkk kkkk	
Description	The contents of W register are AND’ed with the eight-bit literal ‘k’. The result is placed in the W register.	
Cycle	1	
Example	ANDLW 0x5F	B : W = 0xA3 A : W = 0x03

<b>ANDWF</b>	<b>AND W with “f”</b>	
Syntax	ANDWF f [,d]	
Operands	f : 00h ~ 7Fh d : 0, 1	
Operation	$(\text{Destination}) \leftarrow (W) \text{ ‘AND’ } (f)$	
Status Affected	Z	
OP-Code	00 0101 dfff ffff	
Description	AND the W register with register ‘f’. If ‘d’ is 0, the result is stored in the W register. If ‘d’ is 1, the result is stored back in register ‘f’.	
Cycle	1	
Example	ANDWF FSR, 1	B : W = 0x17, FSR = 0xC2 A : W = 0x17, FSR = 0x02



**BCF Clear "b" bit of "f"**

Syntax	BCF f [,b]	
Operands	f : 00h ~ 3Fh b : 0 ~ 7	
Operation	(f.b) ← 0	
Status Affected	-	
OP-Code	01 000b bbff ffff	
Description	Bit 'b' in register 'f' is cleared.	
Cycle	1	
Example	BCF FLAG_REG, 7	B : FLAG_REG = 0xC7 A : FLAG_REG = 0x47

**BSF Set "b" bit of "f"**

Syntax	BSF f [,b]	
Operands	f : 00h ~ 3Fh b : 0 ~ 7	
Operation	(f.b) ← 1	
Status Affected	-	
OP-Code	01 001b bbff ffff	
Description	Bit 'b' in register 'f' is set.	
Cycle	1	
Example	BSF FLAG_REG, 7	B : FLAG_REG = 0x0A A : FLAG_REG = 0x8A

**BTFSC Test "b" bit of "f", skip if clear(0)**

Syntax	BTFSC f [,b]	
Operands	f : 00h ~ 3Fh b : 0 ~ 7	
Operation	Skip next instruction if (f.b) = 0	
Status Affected	-	
OP-Code	01 010b bbff ffff	
Description	If bit 'b' in register 'f' is '1', then the next instruction is executed. If bit 'b' in register 'f' is '0', then the next instruction is discarded, and a NOP is executed instead, making this a 2nd cycle instruction.	
Cycle	1 or 2	
Example	LABEL1 BTFSC FLAG, 1 TRUE GOTO SUB1 FALSE ...	B : PC = LABEL1 A : if FLAG.1 = 0, PC = FALSE if FLAG.1 = 1, PC = TRUE

**BTFSS Test "b" bit of "f", skip if set(1)**

Syntax	BTFSS f [,b]	
Operands	f : 00h ~ 3Fh b : 0 ~ 7	
Operation	Skip next instruction if (f.b) = 1	
Status Affected	-	
OP-Code	01 011b bbff ffff	
Description	If bit 'b' in register 'f' is '0', then the next instruction is executed. If bit 'b' in register 'f' is '1', then the next instruction is discarded, and a NOP is executed instead, making this a 2nd cycle instruction.	
Cycle	1 or 2	
Example	LABEL1 BTFSS FLAG, 1 TRUE GOTO SUB1 FALSE ...	B : PC = LABEL1 A : if FLAG.1 = 0, PC = TRUE if FLAG.1 = 1, PC = FALSE

<b>CALL</b>	<b>Call subroutine "k"</b>
Syntax	CALL k
Operands	K : 00h ~ FFFh
Operation	Operation: TOS ← (PC)+ 1, PC.11~0 ← k
Status Affected	-
OP-Code	10 kkkk kkkk kkkk
Description	Call Subroutine. First, return address (PC+1) is pushed onto the stack. The 12-bit immediate address is loaded into PC bits <11:0>. CALL is a two-cycle instruction.
Cycle	2
Example	LABEL1 CALL SUB1 B : PC = LABEL1 A : PC = SUB1, TOS = LABEL1+1

<b>CLRF</b>	<b>Clear "f"</b>
Syntax	CLRF f
Operands	f : 00h ~ 7Fh
Operation	(f) ← 00h, Z ← 1
Status Affected	Z
OP-Code	00 0001 1fff ffff
Description	The contents of register 'f' are cleared and the Z bit is set.
Cycle	1
Example	CLRF FLAG_REG B : FLAG_REG = 0x5A A : FLAG_REG = 0x00, Z = 1

<b>CLRW</b>	<b>Clear W</b>
Syntax	CLRW
Operands	-
Operation	(W) ← 00h, Z ← 1
Status Affected	Z
OP-Code	00 0001 0100 0000
Description	W register is cleared and Zero bit (Z) is set.
Cycle	1
Example	CLRW B : W = 0x5A A : W = 0x00, Z = 1

<b>CLRWD</b>	<b>Clear Watchdog Timer</b>
Syntax	CLRWD
Operands	-
Operation	WDTE ← 00h
Status Affected	TO,PD
OP-Code	00 0000 0000 0100
Description	CLRWD instruction enables and resets the Watchdog Timer.
Cycle	1
Example	CLRWD B : WDT counter = ? A : WDT counter = 0x00

<b>COMF</b>	<b>Complement “f”</b>	
Syntax	COMF f [,d]	
Operands	f : 00h ~ 7Fh, d : 0, 1	
Operation	(destination) ← ( $\bar{f}$ )	
Status Affected	Z	
OP-Code	00 1001 dfff ffff	
Description	The contents of register ‘f’ are complemented. If ‘d’ is 0, the result is stored in W. If ‘d’ is 1, the result is stored back in register ‘f’.	
Cycle	1	
Example	COMF REG1,0	B : REG1 = 0x13 A : REG1 = 0x13, W = 0xEC

<b>DECF</b>	<b>Decrement “f”</b>	
Syntax	DECF f [,d]	
Operands	f : 00h ~ 7Fh, d : 0, 1	
Operation	(destination) ← (f) - 1	
Status Affected	Z	
OP-Code	00 0011 dfff ffff	
Description	Decrement register ‘f’. If ‘d’ is 0, the result is stored in the W register. If ‘d’ is 1, the result is stored back in register ‘f’.	
Cycle	1	
Example	DECF CNT, 1	B : CNT = 0x01, Z = 0 A : CNT = 0x00, Z = 1

<b>DECFSZ</b>	<b>Decrement “f”, Skip if 0</b>	
Syntax	DECFSZ f [,d]	
Operands	f : 00h ~ 7Fh, d : 0, 1	
Operation	(destination) ← (f) - 1, skip next instruction if result is 0	
Status Affected	-	
OP-Code	00 1011 dfff ffff	
Description	The contents of register ‘f’ are decremented. If ‘d’ is 0, the result is placed in the W register. If ‘d’ is 1, the result is placed back in register ‘f’. If the result is 1, the next instruction is executed. If the result is 0, then a NOP is executed instead, making it a 2 cycle instruction.	
Cycle	1 or 2	
Example	LABEL1 DECFSZ CNT, 1 GOTO LOOP CONTINUE	B : PC = LABEL1 A : CNT = CNT - 1 if CNT=0, PC = CONTINUE if CNT≠0, PC = LABEL1+1

<b>GOTO</b>	<b>Unconditional Branch</b>	
Syntax	GOTO k	
Operands	k : 00h ~ FFFh	
Operation	PC.11~0 ← k	
Status Affected	-	
OP-Code	11 kkkk kkkk kkkk	
Description	GOTO is an unconditional branch. The 12-bit immediate value is loaded into PC bits <11:0>. GOTO is a two-cycle instruction.	
Cycle	2	
Example	LABEL1 GOTO SUB1	B : PC = LABEL1 A : PC = SUB1

<b>INCF</b>	<b>Increment “f”</b>	
Syntax	INCF f [,d]	
Operands	f : 00h ~ 7Fh	
Operation	(destination) ← (f) + 1	
Status Affected	Z	
OP-Code	00 1010 dfff ffff	
Description	The contents of register ‘f’ are incremented. If ‘d’ is 0, the result is placed in the W register. If ‘d’ is 1, the result is placed back in register ‘f’.	
Cycle	1	
Example	INCF CNT, 1	B : CNT = 0xFF, Z = 0 A : CNT = 0x00, Z = 1

<b>INCFSZ</b>	<b>Increment “f”, Skip if 0</b>	
Syntax	INCFSZ f [,d]	
Operands	f : 00h ~ 7Fh, d : 0, 1	
Operation	(destination) ← (f) + 1, skip next instruction if result is 0	
Status Affected	-	
OP-Code	00 1111 dfff ffff	
Description	The contents of register ‘f’ are incremented. If ‘d’ is 0, the result is placed in the W register. If ‘d’ is 1, the result is placed back in register ‘f’. If the result is 1, the next instruction is executed. If the result is 0, a NOP is executed instead, making it a 2 cycle instruction.	
Cycle	1 or 2	
Example	LABEL1 INCFSZ CNT, 1 GOTO LOOP CONTINUE	B : PC = LABEL1 A : CNT = CNT + 1 if CNT=0, PC = CONTINUE if CNT≠0, PC = LABEL1+1

<b>IORLW</b>	<b>Inclusive OR Literal with W</b>	
Syntax	IORLW k	
Operands	k : 00h ~ FFh	
Operation	(W) ← (W) OR k	
Status Affected	Z	
OP-Code	01 1010 kkkk kkkk	
Description	The contents of the W register is OR’ed with the eight-bit literal 'k'. The result is placed in the W register.	
Cycle	1	
Example	IORLW 0x35	B : W = 0x9A A : W = 0xBF, Z = 0

<b>IORWF</b>	<b>Inclusive OR W with “f”</b>	
Syntax	IORWF f [,d]	
Operands	f : 00h ~ 7Fh, d : 0, 1	
Operation	(destination) ← (W) OR (f)	
Status Affected	Z	
OP-Code	00 0100 dfff ffff	
Description	Inclusive OR the W register with register ‘f’. If ‘d’ is 0, the result is placed in the W register. If ‘d’ is 1, the result is placed back in register ‘f’.	
Cycle	1	
Example	IORWF RESULT, 0	B : RESULT = 0x13, W = 0x91 A : RESULT = 0x13, W = 0x93, Z = 0

---

**MOVFW                      Move “f” to W**

---

Syntax	MOVFW f	
Operands	f : 00h ~ 7Fh	
Operation	(W) ← (f)	
Status Affected	-	
OP-Code	00 1000 0fff ffff	
Description	The contents of register f are moved to W register.	
Cycle	1	
Example	MOVFW FSR, 0	B : W = ? A : W ← f, if W = 0 Z = 1

---

**MOVLW                      Move Literal to W**

---

Syntax	MOVLW k	
Operands	k : 00h ~ FFh	
Operation	(W) ← k	
Status Affected	-	
OP-Code	01 1001 kkkk kkkk	
Description	The eight-bit literal ‘k’ is loaded into W register. The don’t cares will assemble as 0’s.	
Cycle	1	
Example	MOVLW 0x5A	B : W = ? A : W = 0x5A

---

**MOVWF                      Move W to “f”**

---

Syntax	MOVWF f	
Operands	f : 00h ~ 7Fh	
Operation	(f) ← (W)	
Status Affected	-	
OP-Code	00 0000 1fff ffff	
Description	Move data from W register to register ‘f’.	
Cycle	1	
Example	MOVWF REG1	B : REG1 = 0xFF, W = 0x4F A : REG1 = 0x4F, W = 0x4F

---

**MOVWR                      Move W to “r”**

---

Syntax	MOVWR r	
Operands	r : 00h ~ FFh	
Operation	(r) ← (W)	
Status Affected	-	
OP-Code	01 1110 rrrr rrrr	
Description	Move data from W register to register ‘r’.	
Cycle	1	
Example	MOVWR REG1	B : REG1 = 0xFF, W = 0x4F A : REG1 = 0x4F, W = 0x4F

---

**MOVRW                      Move “r” to W**

---

Syntax	MOVRW r	
Operands	r : 20h ~ FFh	
Operation	(W) ← (r)	
Status Affected	-	
OP-Code	01 1111 rrrr rrrr	
Description	Move data from register ‘r’ to W register.	
Cycle	1	
Example	MOVRW REG1	B : REG1 = 0x4F, W = ? A : REG1 = 0x4F, W = 0x4F

---

**NOP                              No Operation**

---

Syntax	NOP	
Operands	-	
Operation	No Operation	
Status Affected	-	
OP-Code	00 0000 0000 0000	
Description	No Operation	
Cycle	1	
Example	NOP	-

---

**RETI                              Return from Interrupt**

---

Syntax	RETI	
Operands	-	
Operation	PC ← TOS, GIE ← 1	
Status Affected	-	
OP-Code	00 0000 0110 0000	
Description	Return from Interrupt. Stack is POPed and Top-of-Stack (TOS) is loaded in to the PC. Interrupts are enabled. This is a two-cycle instruction.	
Cycle	2	
Example	RETFIE	A : PC = TOS, GIE = 1

---

**RETLW                          Return with Literal in W**

---

Syntax	RETLW k	
Operands	k : 00h ~ FFh	
Operation	PC ← TOS, (W) ← k	
Status Affected	-	
OP-Code	01 1000 kkkk kkkk	
Description	The W register is loaded with the eight-bit literal ‘k’. The program counter is loaded from the top of the stack (the return address). This is a two-cycle instruction.	
Cycle	2	
Example	CALL TABLE	B : W = 0x07 A : W = value of k8
	:	
	TABLE ADDWF PCL,1	
	RETLW k1	
	RETLW k2	
	:	
	RETLW kn	







**XORLW Exclusive OR Literal with W**

Syntax	XORLW k	
Operands	k : 00h ~ FFh	
Operation	(W) ← (W) XOR k	
Status Affected	Z	
OP-Code	01 1111 kkkk kkkk	
Description	The contents of the W register are XOR'ed with the eight-bit literal 'k'. The result is placed in the W register.	
Cycle	1	
Example	XORLW 0xAF	B : W = 0xB5 A : W = 0x1A

**XORWF Exclusive OR W with "f"**

Syntax	XORWF f [,d]	
Operands	f : 00h ~ 7Fh, d : 0, 1	
Operation	(destination) ← (W) XOR (f)	
Status Affected	Z	
OP-Code	00 0110 dfff ffff	
Description	Exclusive OR the contents of the W register with register 'f'. If 'd' is 0, the result is stored in the W register. If 'd' is 1, the result is stored back in register 'f'.	
Cycle	1	
Example	XORWF REG 1	B : REG = 0xAF, W = 0xB5 A : REG = 0x1A, W = 0xB5

## 2. Control Registers

### 2.1 F-Plane Table

Addr	RST	NAME	Bit 7	Bit 6	Bit 5	Bit 4	Bit 3	Bit 2	Bit 1	Bit 0
00h	xxxx-xxxx	INDF	Addressing INDF uses contents of FSR to address data memory							
01h	0000-0000	TM0	Timer 0 Counter							
02h	0000-0000	PC	Program Counter [0..7]							
03h	0000-0000	STATUS	--	--	RAMBANK	--	--	ZFLAG	DCFLAG	CFLAG
04h	0000-0000	FSR	F-Plane File Select Register							
05h	0000-0000	RSR	R-Plane File Select Register							
06h	1111-1111	PAD	PA[0..7] Port A Pin data output register							
07h	xxxx-11x1	PBD	PB[0,2,3] Port B Pin data output register							
0ah	xxx1-1111	PED	PE[0..4] Port E Pin data output register							
10h	0000-0000	USBE	USBE	FUNADR						
11h	0000-0000	INTFLAG1	SET0I	OUT0I	TX0I	TX1I	TX2I	SUSPI	TX3I	RC4I
12h	x000-0000	INTFLAG2	--	--	WKTI	RSTI	RSMI	--	PB0I	TM0I
13h	0000-0xx0	EPCFG	SUSP	RSMO	EP1CFG	EP2CFG	DEVR	--	--	OUT0RDY
14h	0000-0000	EP0SET	TX0RDY	TX0TGL	EP0STALL	IN0STALL	TX0CNT[0..3]			
15h	000x-0000	EP1SET	TX1RDY	TX1TGL	EP1STALL	--	TX1CNT[0..3]			
16h	000x-0000	EP2SET	TX2RDY	TX2TGL	EP2STALL	--	TX2CNT[0..3]			
17h	000x-0000	EP3SET	TX3RDY	TX3TGL	EP3STALL	EP3CFG	--			
18h	0x00-0xxx	EP4SET	RC4RDY	RC4TGL	EP4STALL	EP4CFG	RC4ERR	--		
19h	x000-0000	TX3CNT	Endpoint 3 transmit byte count							
1ah	x000-0000	RC4CNT	Endpoint 4 transmit byte count							
1ch	0000-0000	XRAMCON	--		SRAM1USB	SRAM2USB	SRAM1SPI	SRAM2SPI	--	--
1dh	0000-0000	SPISET	--	--	SPIMODE	SPIEN	LSBFIRST	SPIIN	SPISW	CLRADR
20h	xxxx-xxxx	BANK0	Internal RAM 96 Bytes (BANK0)							
:										
7fh	xxxx-xxxx	BANK1	Internal RAM 96 Bytes (BANK1)							

**2.2 F-Plane Description**

	Name	Address	R/W	Rst	Descriptions
F01	TM0	01.7~0	R/W	0	Timer 0 value
F02	PC	02.7~0	R/W	0	Program Counter [7~0]
F03	RAMBANK	03.5	R/W	0	SRAM Bank Select
	ZFLAG	03.2	R/W	0	Zero Flag
	DCFLAG	03.1	R/W	0	Decimal Carry Flag
	CFLAG	03.0	R/W	0	Carry Flag
F04	FSR	04.6~0	R/W	0	File Select Register
F05	RSR	05.7~0	R/W	0	R-Plane File Select Register
F06	PAD	06.7~0	R/W	ff	Port A output data
F07	PBD	07.3~0	R/W	ff	Port B output data, PBD[3:0];
F0A	PED	0A.7~0	R/W	f	Port E output data, PED[4:0];
F10	USBE	10.7	R/W	0	USB function enable (1)
	FUNADR	10.6~0	R/W	0	USB function address
F11	SET0I	11.7	R/W	0	Endpoint 0 SET0 Receive Interrupt flag, write 0 to clear flag.
	OUT0I	11.6	R/W	0	Endpoint 0 OUT Receive Interrupt flag, write 0 to clear flag.
	TX0I	11.5	R/W	0	Endpoint 0 IN Transmit Interrupt flag, write 0 to clear flag.
	TX1I	11.4	R/W	0	Endpoint 1 IN Transmit Interrupt flag, write 0 to clear flag.
	TX2I	11.3	R/W	0	Endpoint 2 IN Transmit Interrupt flag, write 0 to clear flag.
	SUSPI	11.2	R/W	0	USB Suspend Interrupt flag, write 0 to clear flag.
	TX3I	11.1	R/W	0	Endpoint 3 Bulk Transmit Interrupt flag, write 0 to clear flag.
	RC4I	11.0	R/W	0	Endpoint 4 Bulk Receive Interrupt flag, write 0 to clear flag.
F12	WKTI	12.5	R/W	0	Wakeup Timer Interrupt flag, write 0 to clear flag
	RSTI	12.4	R/W	0	USB Bus Reset Interrupt flag, write 0 to clear flag.
	RSMI	12.3	R/W	0	USB Resume Interrupt flag, write 0 to clear flag.
	PBOI	12.1	R/W	0	PB0 Interrupt flag, write 0 to clear flag.
	TM0I	12.0	R/W	0	Timer0 Interrupt flag, write 0 to clear flag.
F13	SUSP	13.7	R/W	0	S/W force USB interface into suspend mode.
	RSMO	13.6	R/W	0	S/W force USB interface sends RESUME signal in suspend mode.
	EP1CFG	13.5	R/W	0	Set Endpoint 1 configured.
	EP2CFG	13.4	R/W	0	Set Endpoint 2 configured.
	DEVR	13.3	R/W	0	DP Pull-high resistor enable bit: 0: Disable pull-high , 1: pull-high enable
	OUT0RDY	13.0	R/W	0	Endpoint 0 ready for receive, cleared by H/W while OUT0I occurs.
F14	TX0RDY	14.7	R/W	0	Endpoint 0 ready for transmit, cleared by H/W while TX0I occurs.
	TX0TGL	14.6	R/W	0	Endpoint 0 transmits DATA1/DATA0 packet.
	EP0STALL	14.5	R/W	0	Endpoint 0 will stall OUT/IN packet.
	IN0STALL	14.4	R/W	0	Endpoint0 IN Stall(1)
	TX0CNT	14.3~0	R/W	0	Endpoint 0 transmits byte count.

	Name	Address	R/W	Rst	Descriptions
F15	TX1RDY	15.7	R/W	0	Endpoint 1 ready for transmit, cleared by H/W while TX1I occurs.
	TX1TGL	15.6	R/W	0	Endpoint 1 transmits DATA1/DATA0 packet.
	EP1STALL	15.5	R/W	0	Endpoint 1 will stall IN packet.
	TX1CNT	15.3~0	R/W	0	Endpoint 1 transmits byte count.
F16	TX2RDY	16.7	R/	0	Endpoint 2 ready for transmit, cleared by H/W while TX2I occurs.
	TX2TGL	16.6	R/W	0	Endpoint 2 transmits DATA1/DATA0 packet.
	EP2STALL	16.5	R/W	0	Endpoint 2 will stall IN packet.
	TX2CNT	16.3~0	R/W	0	Endpoint 2 transmits byte count.
F17	TX3RDY	17.7	R/W	0	Endpoint 3 ready for transmit, cleared by H/W while TX3I occurs.
	TX3TGL	17.6	R/W	0	Endpoint 3 transmits DATA1/DATA0 packet.
	EP3STALL	17.5	R/W	0	Endpoint 3 will stall IN packet.
	EP3CFG	17.4	R/W	0	Set Endpoint 3 configured.
F18	RC4RDY	18.7	R/W	0	Endpoint 4 ready for receive, cleared by H/W while RC4I occurs.
	RC4TGL	18.6	R	-	Endpoint 4 receives DATA1/DATA0 packet
	EP4STALL	18.5	R/W	0	Endpoint 4 will stall OUT packet.
	EP4CFG	18.4	R/W	0	Set Endpoint 4 configured
	RC4ERR	18.3	R	0	EP4 receives data error.
F19	TX3CNT	19.6~0	R/W	0	Endpoint 3 transmits byte count.
F1A	RC4CNT	1A.6~0	R	0	Endpoint 4 transmits byte count.
F1C	SRAMCON	1C.5~0	R/W	0	SRAM Configuration
	SRAM1USB	1C.5	R/W	0	Assign SRAM1 as USB Bulk Transfer buffer
	SRAM2USB	1C.4	R/W	0	Assign SRAM2 as USB Bulk Transfer buffer
	SRAM1SPI	1C.3	R/W	0	Assign SRAM1 as SPI DMA Transfer buffer
	SRAM2SPI	1C.2	R/W	0	Assign SRAM2 as SPI DMA Transfer buffer
F1D	SPIMODE	1D.5	R/W	0	SPI MODE
	SPIEN	1D.4	R/W	0	SPI Enable, Busy bit
	LSBFIRST	1D.3	R/W	0	1: Data transmit/Receive is LSB first; 0: MSB first
	SPIIN	1D.2	R/W	0	(1) SPI Bus is used to receive data from SPI Device
					(0) SPI Bus is used to transmit data to SPI Device
	SPISW	1D.1	R/W	0	SPI CMD/DAT Switch; 1:CMD, 0:DAT
	CLRADR	1D.0	R/W	0	Write 1 to clear ram address
	SRAM	20~7F	R/W	-	Internal RAM (96 Bytes x 2 Banks)

**2.3 R-Plane Register Table**

Addr	RST	NAME	Bit 7	Bit 6	Bit 5	Bit 4	Bit 3	Bit 2	Bit 1	Bit 0
00h	xxxx-xxxx	INDR	Addressing INDR uses contents of RSR to address data memory							
01h	0000-0000	TMORLD	Timer0 overflow reload value							
02h	0000-0000	TM0SET	--		TM0EN	TM0PSC[0..3]				
03h	xxxx-xxxx	PWRDOWN	Write this Register to enter Power-Down Mode							
04h	0000-0000	WDTE	Write this register to clear WDT and enable WDT							
06h	0000-000x	WRCPD	WRCPD	WDTPSC		WKTpsc		--	--	--
07h	xx01-1000	CLKSEL	--	--	--	--	--	--	CLKDIV	
09h	xxxx-xx00	IRCKCO	--						PE3CKO	PE3SEL
11h	0000-0000	USBINTEN	SET0IE	OUT0IE	TX0IE	TX1IE	TX2IE	SUSPIE	TX3IE	RC4IE
12h	x000-0000	FUNINTEN	--	--	WKTIE	RSTIE	RSMIE	--	PB0IE	TM0IE
13h	xxxx-xxxx	RC0SET	RC0TGL	RC0ERR	EP0DIR	EP0IND	OUT0CNT			
20h	0000-0000	PAE	PA[0..7] CMOS push-pull output enable							
21h	xxxx-000x	PBE	PB[0,2,3] CMOS push-pull output enable							
24h	0000-0000	PEE	PE[0..4] CMOS push-pull output enable							
25h	0000-0000	PAPU	PA[0..7] pull-up , enable=0							
26h	0000-0000	PBPU	PB[0,2,3] pull-up , enable=0							
27h	xxxx-x000	PEPU	--							PEPU
3bh	xx00-0000	SPIENF	--	--	CPOL	CPHA	BSL[0..3]			
3ch	x000-0000	SPICRS	--	SPICRS[0..6] SPI Clock Select						
3dh	x000-0000	SPILEN	--	SPILEN[0..6] SPI Transfer length						
3eh	0000-0000	SPITX	SPITX[0..7] SPI Transmit DATA in CMD phase							
3fh	xxxx-xxxx	SPIRX	SPIRX[0..7] SPI Received DATA							
40h : 47h	xxxx-xxxx	SET0FIFO	Endpoint 0 SETUP Receive Buffer (8 Bytes)							
48h : 4fh	xxxx-xxxx	OUT0FIFO	Endpoint 1 OUT Receive Buffer (8 Bytes)							
50h : 57h	xxxx-xxxx	TX0FIFO	Endpoint 0 Transmit Buffer (8 Bytes)							
58h : 5fh	xxxx-xxxx	TX1FIFO	Endpoint 1 Transmit Buffer (8 Bytes)							
60h : 67h	xxxx-xxxx	TX2FIFO	Endpoint 2 Transmit Buffer (8 Bytes)							
80h : bfh	xxxx-xxxx	XRAM1	Endpoint 3/4 Buffer (64 Bytes)							
c0h : ffh	xxxx-xxxx	XRAM2	Endpoint 3/4 Buffer (64 Bytes)							

**2.4 R-Plane Description**

	Name	Address	R/W	Rst	Description
R01	TM0RLD	01.7~0	W	0	Timer0 overflow reload value
R02	TM0EN	02.4	W	0	Timer0 Enable
	TM0PSC	02.3~0	W	0	Timer0 Pre-Scale, 0: div1, 1: div2, 2: div4, ..., 8: div256
R03	PWRDOWN	03	W	0	Write this register to enter Power-Down Mode
R04	WDTE	04	W	0	Write this register to clear WDT and enable WDT
R06	WRCPD	06.7	W	0	WRC Disable, 1: Disable WRC, 0: Enable WRC
	WDTPSC	06.6~5	W	11	WDT period, 00=17.5 ms, 01=35 ms, 10=70 ms, 11=140 ms
	WKTPSC	06.4~3	W	11	WKT period, 00=140 ms, 01=280 ms, 10=560 ms, 11=1120 ms
R07	CLKDIV	07.1~0	W	-	System Clk Period Selection
					2'b00: 12 MHz
					2'b01: 6 MHz
					2'b10: 3 MHz
R09	PE3CKO	09.1	W		Set PE3 to be GPIO or IRC CKO; 0: GPIO port, 1: IRC CKO
	PE3SEL	09.0	W		When EN_PE3_CKO=1, IRCCKO_SEL is used to select clock frequency, 0: IRC 12 MHz output, 1: IRC 6 MHz output
R10	TESTREG	10.2~0	W	0	Test Mode option
R11	SET0IE	11.7	W	0	SET0I Interrupt enable
	OUT0IE	11.6	W	0	OUT0 Interrupt enable
	TX0IE	11.5	W	0	TX0I Interrupt enable
	TX1IE	11.4	W	0	TX1I Interrupt enable
	TX2IE	11.3	W	0	TX2I Interrupt enable
	SUSPIE	11.2	W	0	SUSPI Interrupt enable
	TX3IE	11.1	W	0	TX3I Interrupt enable
R12	RC4IE	11.0	W	0	RC4I Interrupt enable
	WKTIE	12.5	W	0	Wakeup Timer Interrupt enable
	RSTIE	12.4	W	0	RSTI Interrupt enable
	RSMIE	12.3	W	0	RSMI Interrupt enable
	PBOIE	12.1	W	0	PB0 Interrupt enable
R13	TM0IE	12.0	W	0	Timer0 Interrupt enable
	RC0TGL	13.7	R		1: received DATA1 packet; 0: received DATA0 Packet.
	RC0ERR	13.6	R		Endpoint 0 received data error.
	EP0DIR	13.5	R		1: IN transfer; 0: OUT/SETUP transfer.
	EP0IND	13.4	R		SETUP Token indicator.
R20	OUT0CNT	13.3~0	R		OUT0 Received data byte count.
	PAE	20.7~0	W	0	1: Port A CMOS push-pull output enable, 0: PortA used as Pseudo Open drain
	PBE	21.3~0	W	0	1: Port B CMOS push-pull output enable, 0 :PortB used as Open drain
	PEE	24.7~0	W	0	1: Port E CMOS push-pull output enable, 0 :PortE used as Pseudo Open drain
	PAPU	25.7~0	W	0	1: PortA pull-up disable, 0: PortA pull-up enable

	Name	Address	R/W	Rst	Description
R26	PBPU	26.3~0	W	0	1: PortB pull-up disable, 0: PortB pull-up enable
R27	PCDEPU	27.0	W	0	1: PortE pull-up disable, 0: PortE pull-up enable
R3B	CPOL	3B.5	W	0	SPI Clock Polarity
	CPHA	3B.4	W	0	SPI Clock Phase
	BSL	3B.3~0	W	0	Buffer shift bit counter; set 4'b0111 for byte (8 bits) transfer
R3C	SPICRS	3C.6~0	W	0	SPI clock Select
R3D	SPILEN	3D.6~0	W	0	SPI DMA transfer length; Length: 1 ~ 64 bytes
R3E	SPITX	3E.7~0	W	0	SPI Transmit DATA in CMD phase
R3F	SPIRX	3F.7~0	R	-	SPI Received Data
	SET0FIFO	40~47	R	-	Endpoint 0 SETUP Receive Buffer (8 Bytes)
	OUT0FIFO	48~4F	R	-	Endpoint 1 OUT Receive Buffer (8 Bytes)
	TX0FIFO	50~57	W	-	Endpoint 0 Transmit Buffer (8 Bytes)
	TX1FIFO	58~5F	W	-	Endpoint 1 Transmit Buffer (8 Bytes)
	TX2FIFO	60~67	W	-	Endpoint 2 Transmit Buffer (8 Bytes)
	XRAM1	80~BF	R/W	-	Endpoint 3/4 Buffer (64 Bytes)
XRAM2	C0~FF	R/W	-	Endpoint 3/4 Buffer (64 Bytes)	

### 3. USB Engine

The USB engine includes the Serial Interface Engine (SIE), the full-speed USB I/O transceiver. The SIE block performs most of the USB interface function with only minimum support from F/W. Three endpoints are supported. Endpoint 0 is used to receive and transmit control (including SETUP) packets. Endpoint 1 and endpoint 2 are used for interrupt transfer. Endpoint 3 and endpoint 4 are used for bulk transfer.

The USB SIE handles the following USB bus activity independently:

- Bit stuffing/unstuffing
- CRC generation/checking
- ACK/NAK
- TOKEN type identification
- Address checking

F/W handles the following tasks:

- Coordinate enumeration by responding to SETUP packets
- Fill and empty the FIFOs
- Suspend/Resume coordination
- Verify and select DATA toggle values

#### 3.1 USB Device Address

The USB device address register F10[6:0] (USBADR) stores the device's address. This register is reset to all 0 after chip reset. F/W must write this register a valid value after the USB enumeration process.

#### 3.2 Endpoint 0 receive (SET0/OUT0)

After receiving a SETUP packet and placing the data into the Endpoint 0 setup receive FIFO (SET0FIFO), TMU3132LV updates the Endpoint 0 status registers to record the receive status and then generates an Endpoint 0 setup receive interrupt (SET0I). The received data are always stored into SET0FIFO for DATA packets following SETUP token.

If received is a valid OUT packet, then generates Endpoint 0 out receive interrupt (OUT0I), data are stored into OUT0FIFO, F/W can read the status register F13, F14 and R14 for the recent transfer information, which includes the data byte count (OUT0CNT), packet toggle bit (RC0TGL) and data valid flag (RC0ERR). The data following an OUT token are written into OUT0FIFO and the OUT0CNT is updated unless Endpoint 0 STALL (EPOSTALL) is set or Endpoint 0 receive ready (OUT0RDY) is not clear. The data following an OUT token are written into the OUT0FIFO, and the OUT0CNT is updated unless Endpoint 0 STALL (EPOstall) is set or Endpoint 0 receive ready (OUT0RDY) is cleared. The SIE clears the OUT0RDY automatically and generates OUT0I interrupt when the OUT0CNT or OUT0FIFO is updated. As long as the OUT0RDY is cleared, SIE keep responding NAK to Host's Endpoint 0 OUT packet request. F/W should set the OUT0RDY flag after the OUT0I interrupt is asserted and OUT0FIFO is read out.



### 3.3 Endpoint 0 transmit (TX0)

After detecting a valid Endpoint 0 IN token, TMU3132LV automatically transmits the data pre-stored in the Endpoint 0 transmit FIFO (TX0FIFO) to the USB bus if the Endpoint 0 transmit ready flag (TX0RDY) is set and the EP0STALL is cleared. The number of byte to be transmitted depends on the Endpoint 0 transmit byte count register (TX0CNT). The DATA0/1 token to be transmitted depends on the Endpoint 0 transmit toggle control bit (TX0TGL). After the TX0FIFO is updated, TX0RDY should be set to 1. This enables the TMU3132LV to respond to an Endpoint 0 IN packet. TX0RDY is cleared and an Endpoint 0 transmit interrupt (TX0I) is generated once the USB host acknowledges the data transmission. The interrupt service routine can check TX0RDY to confirm that the data transfer is successful.

### 3.4 Endpoint 1/2 transmit (TX1/2)

Endpoint 1 and Endpoint 2 are capable of transmit only. These endpoints are enabled when the Endpoint 1/Endpoint 2 configuration control bit (EP1CFG/EP2CFG) is set. After detecting a valid Endpoint 1/2 IN token, TMU3132LV automatically transmits the data pre-stored in the Endpoint 1/2 transmit FIFO (TX1FIFO/TX2FIFO) to the USB bus if the Endpoint 1/2 transmit ready flag (TX1RDY/TX2RDY) is set and the EP1STALL/EP2STALL is cleared. The number of byte to be transmitted depends on the Endpoint 3/4 transmit byte count register (TX1CNT/TX2CNT). The DATA0/1 token to be transmitted depends on the Endpoint 1/2 transmit toggle control bit (TX1TGL/TX2TGL). After the TX1FIFO/TX2FIFO is updated, TX1RDY/TX2RDY should be set to 1. This enables the TMU3132LV to respond to an Endpoint 1/2 IN packet. TX1RDY/TX2RDY is cleared and an Endpoint 1/2 transmit interrupt (TX1I/TX2I) is generated once the USB host acknowledges the data transmission. The interrupt service routine can check TX1RDY/TX2RDY to confirm that the data transfer is successful.

### 3.5 Endpoint 3 transmit (TX3)

Endpoint 3 is capable of transmit only. Register F15, F19 and F1C are used to control this endpoint. Endpoint 3 is enabled when the configuration control bit (EP3CFG) is set. To properly use this endpoint, F/W must set SRAM1USB=1 or SRAM2USB=1 to assign exactly one SRAM (SRAM1 or SRAM2) as USB Bulk In buffer. Once this endpoint is enabled, F/W should set the Toggle bit (TX3TGL) and set the transmit byte count register (TX3CNT). After detecting a valid Endpoint 1 IN token, TMU3132LV automatically transmits the data pre-stored in the Endpoint 3 SRAM buffer to the USB bus if the Endpoint 3 transmits ready flag (TX3RDY) is set and the EP3STALL is cleared. The number of byte to be transmitted depends on the Endpoint 3 transmit byte count register (TX3CNT). The DATA0/1 token to be transmitted depends on the Endpoint 1 transmit toggle control bit (TX3TGL). Once the USB host acknowledges the data transmission, Endpoint 3 transmit interrupt (TX3I) is generated and the TX3RDY will be cleared. The interrupt service routine can check TX3RDY to confirm that the data transfer is successful.

### 3.6 USB Endpoint 4 receive (RC4)

Endpoint 4 is capable of receive only. Register F18, R1A and F1C are used to control this endpoint. This endpoint is enabled when Endpoint 4 configured control bit (EP4CFG) is set.

To properly use this endpoint, F/W must set SRAM1USB=1 or SRAM2USB=1 to assign exactly one SRAM (SRAM1 or SRAM2) as USB Bulk out buffer. After detecting a valid Endpoint 4 OUT token, the

TMU3132LV automatically stores the bulk out data into the specified Bulk out buffer and updates RC4CNT if the Endpoint 4 receiving ready flag (RC4RDY) is set and the EP4STALL is cleared. The DATA0/DATA1 token to be checked is toggled by F/W. When an Endpoint 4 receive interrupt (RC4I) is generated, the RC4RDY is cleared. During the packet transfer stage, if data is to check error, will response on RC4ERR.

### 3.7 USB Control and Status

Other USB control bits include the USB enable (USBE), Suspend (SUSP), Resume output (RSM, Device Resister (DEVICE\_R), and corresponding interrupt enable bits. The DEVICE\_R is set to enable DP pull-up resister. Other USB status flag includes the USB reset interrupt (RSTI), Resume input interrupt (RSMI), and USB Suspend interrupt (SUSPI).

### 3.8 Suspend and Resume

Once the Suspend condition is asserted, F/W can set the SUSP bit to save the power consumption of USB Engine. F/W can further save the device power by force the CPU to go into the Power Down Mode by setting register R03. In the Power Down mode CPU can be waken-up by the trigger of any enabled interrupt's source or by USB bus reset or by USB bus resume. The TMU3132LV send Resume signaling to USB bus when SUSP=1 and RSMO=1.

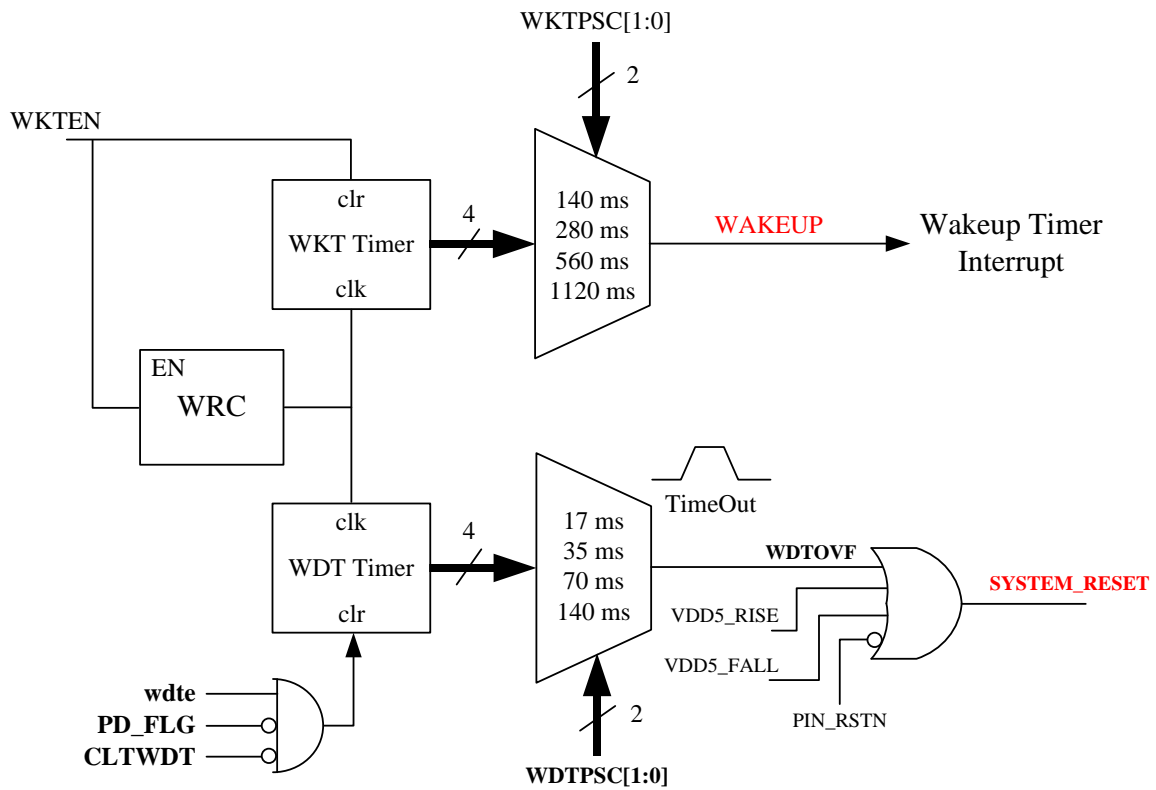
### 3.9 Interrupt Vector

There are several interrupts generated by USB Engine. The other interrupts including timer0 interrupts, wakeup timer interrupt and PB0 external I/O interrupt. Each interrupt source has its own enable control bit. An interrupt event will set its individual flag. If the corresponding interrupt enable bit has been set, it would trigger CPU. F/W must clear the interrupt event register while serving the interrupt routine.

Adr	
00	Reset Vector
01	USB Endpoint 0 SET0 Receive Interrupt
02	USB Endpoint 0 OUT Receive Interrupt
03	USB Endpoint 0 Transmit Interrupt
04	USB Endpoint 1 Transmit Interrupt
05	USB Endpoint 2 Transmit Interrupt
06	USB Suspend Interrupt
07	USB Endpoint 3 Bulk Transmit Interrupt
08	USB Endpoint 4 Bulk Receive Interrupt
09	USB Bus Reset Interrupt
0a	USB Resume Interrupt
0b	Wakeup Timer Interrupt
0c	Timer0 Interrupt
0d	PB0 External I/O Interrupt

#### 4. Wakeup Timer and Watch Dog Timer

The WKT and WDT use the same internal RC (WRC). This internal RC (WRC) can be disabled by setting R06[7] “High” for power saving. The overflow period of WDT can be selected from 17.5 ms to 140 ms and the wakeup period of WKT can be selected from 140 ms to 1120 ms. The WDT is enabled and cleared by the CLRWDT instruction. Once the WDT is enabled, the WDT generates the chip reset signal when WDT overflows. The WKT generates overflow time out interrupt if the corresponding WKT interrupt enable bit is set “High”. The WKT works in both normal mode and Power Down mode. WDT does not work in Power Down mode, it is only designed to prevent F/W goes into endless loops.



## 5. Timer

### 5.1 Timer0: 8-bit Timer with Pre-scale (PSC)

The Timer0 is an 8-bit wide register of F-Plane. It can be read or written as any other register of F-Plane. Besides, Timer0 increases itself periodically and automatically reloads a new “offset value” (T0RLD) while it rolls over based on the pre-scaled instruction clock. The Timer0 increase rate is determined by “Timer0 Pre-Scale” (T0PSCL) register in R-Plane. The Timer0 can generate interrupt (TM0I).

Timer0 overflow Period is determined by the equation shown below

$$T_{0\text{prd}} = (2 * T_{\text{cpu}} * 2^{T0\text{PSCL}}) * (256 - T0\text{RLD})$$

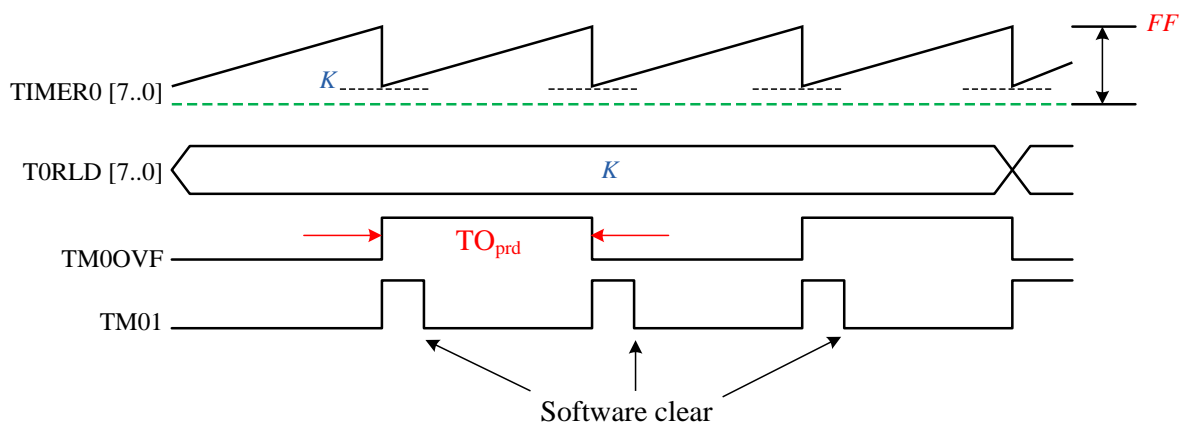
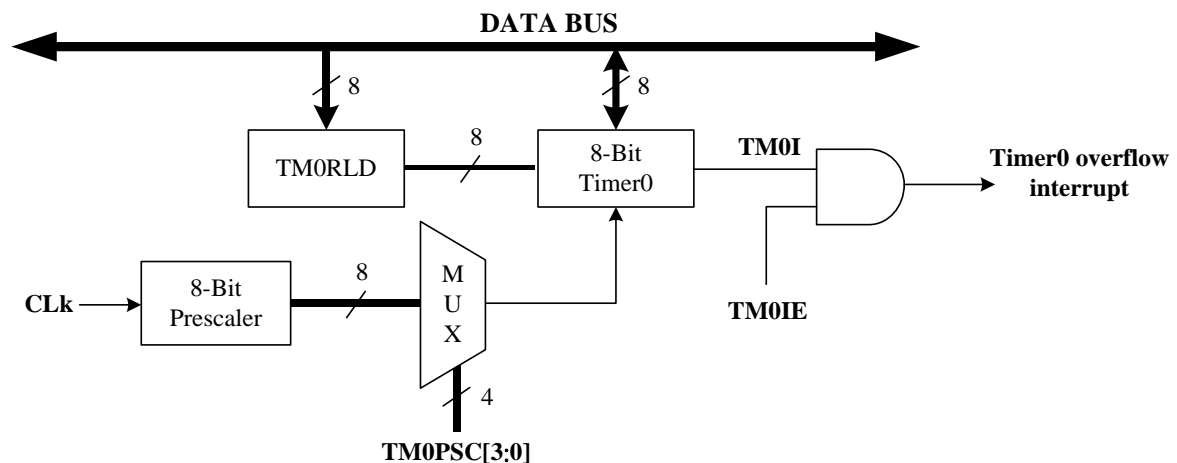
For example,

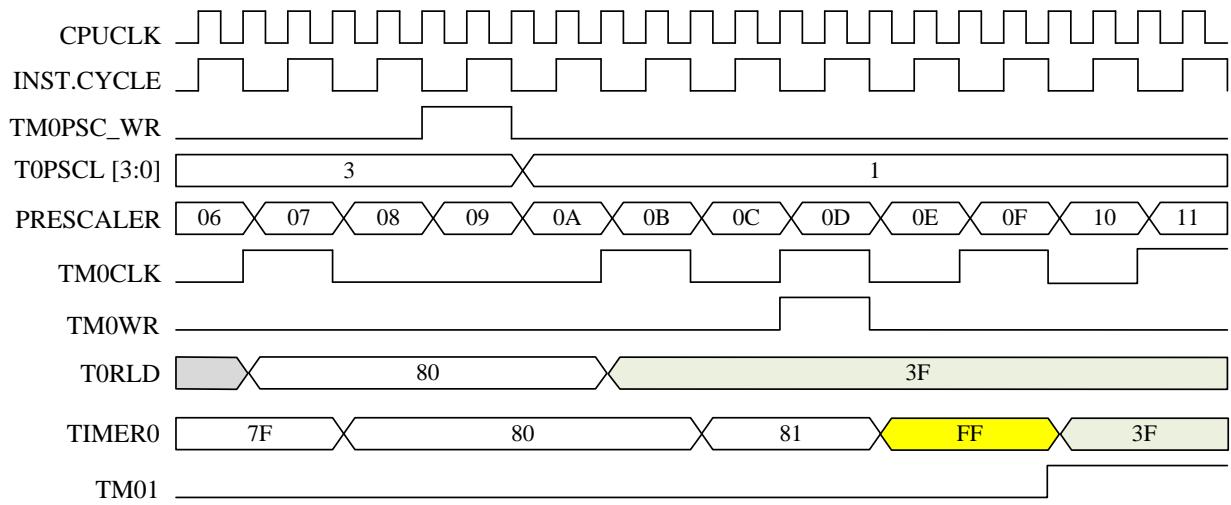
ex1. CPU clock is 12 MHz (83.33 ns), T0RLD=0x78 (120), T0PSCL=0x4

Timer0 overflow period=  $(83.33 * 2 * 2^4) * (256-120) = 362652 \text{ ns} \approx 362.65 \text{ us}$

ex2. CPU clock is 12 MHz (83.33 ns), T0RLD=0xe0 (224), T0PSCL=0x6

Timer0 overflow period=  $(83.33 * 2 * 2^6) * (256-224) = 341319.7 \text{ ns} \approx 341.32 \text{ us}$





## 6. SPI (Serial Peripheral Interface)

The SPI Interface can be used to communicate with external peripheral devices such as flash or EEPROM memory device. This SPI module can be used as master only. The clock rate and data transfer length are also adjustable.

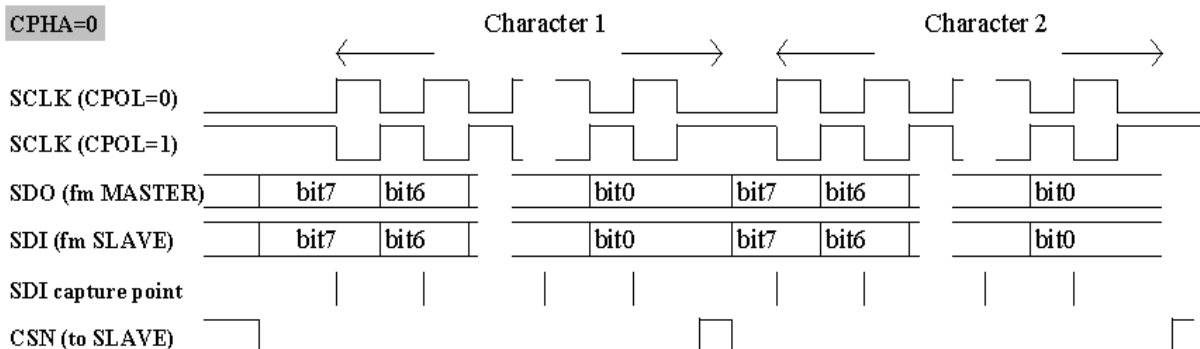
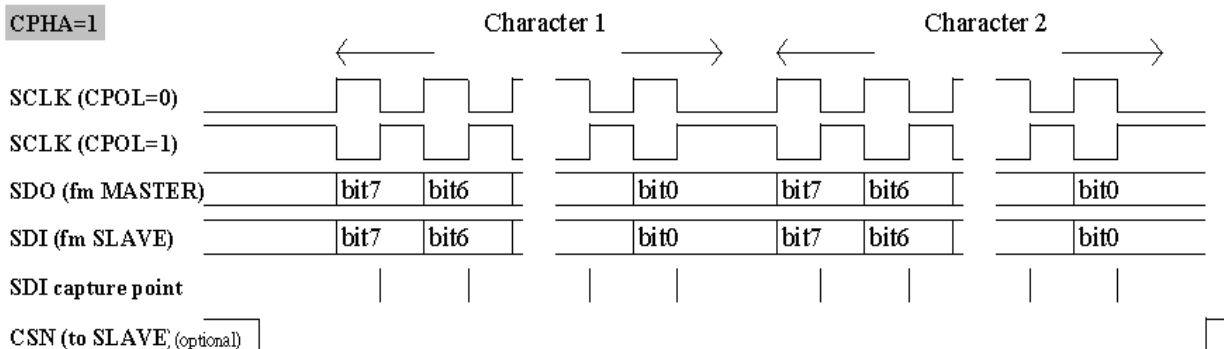
$$\text{SPI clock rate} = \text{CPUCLK} / 2 * (\text{CRS} + 1)$$

CRS[6:0]	SPI Clock Rate
0	6 Mbps
3	1.5 Mbps
15	375 kbps

Note: CPUCLK=12 MHz

All the registers must be set before F1D.4 (SPI\_EN) bit has been set. There are two data transfer mode. One is command phase mode, in this mode the data transfer length is “1” and the data must preset in R3E. The other one is data phase, in this mode, data transfer length is according to how many bytes data will be transferred. The length value is stored in R3D and the transfer data is stored in the SRAM (SRAM1 or SRAM2).

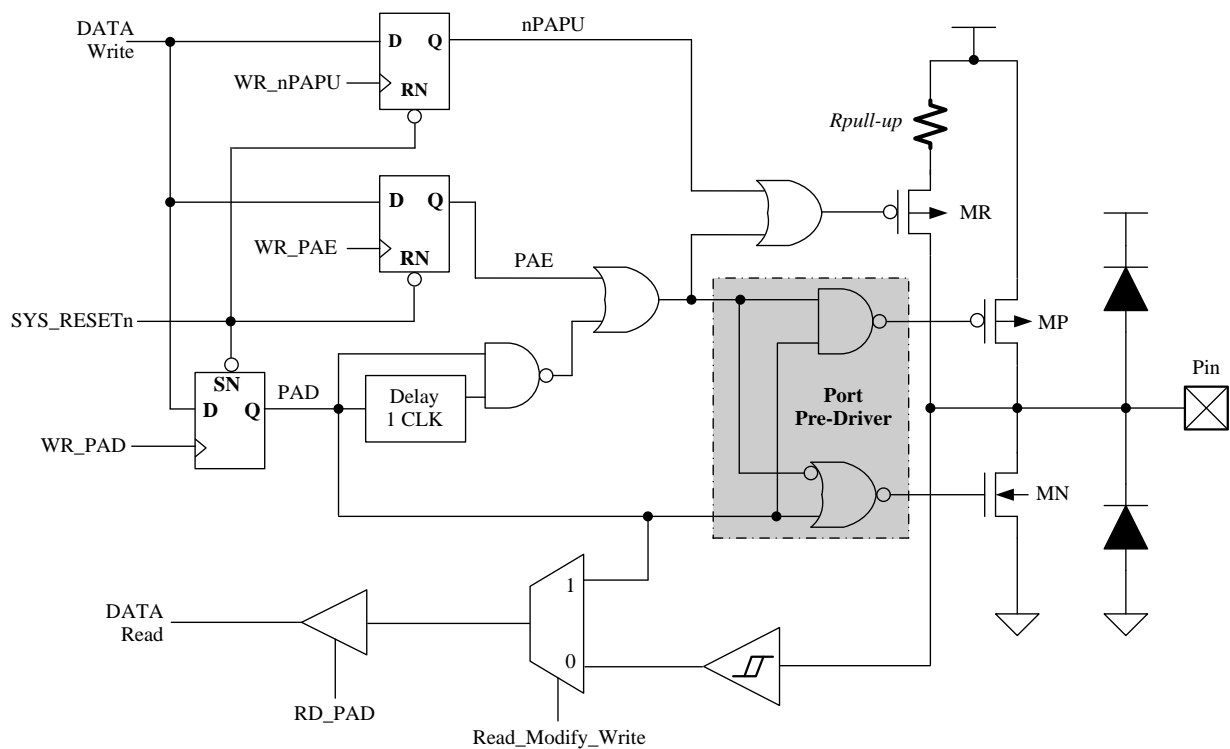
### SPI Timing



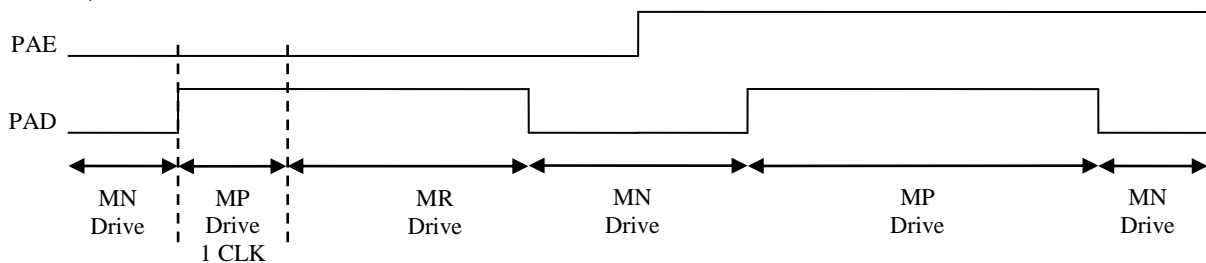
## 7. I/O Port

### 7.1 PA0-7

These pins can be used as Schmitt-trigger input, CMOS push-pull output or "pseudo-open-drain" output. The pull-up resistor is assignable to each pin by S/W setting. To use the pin in Schmitt-trigger input mode, S/W needs to set the PAE=0 and PAD=1. To use the pin in pseudo-open-drain mode, S/W sets the PAE=0. The benefit of pseudo-open-drain structure is that the output rise time can be much faster than pure open-drain structure. S/W sets PAE=1 to use the pin in CMOS push-pull output mode. Reading the pin data (PAD) has different meaning. In "Read-Modify-Write" instruction, CPU actually reads the output data register. In the other instructions, CPU reads the pin state. The so-called "Read-Modify-Write" instruction includes BSF, BCF and all instructions using F-Plane as destination.

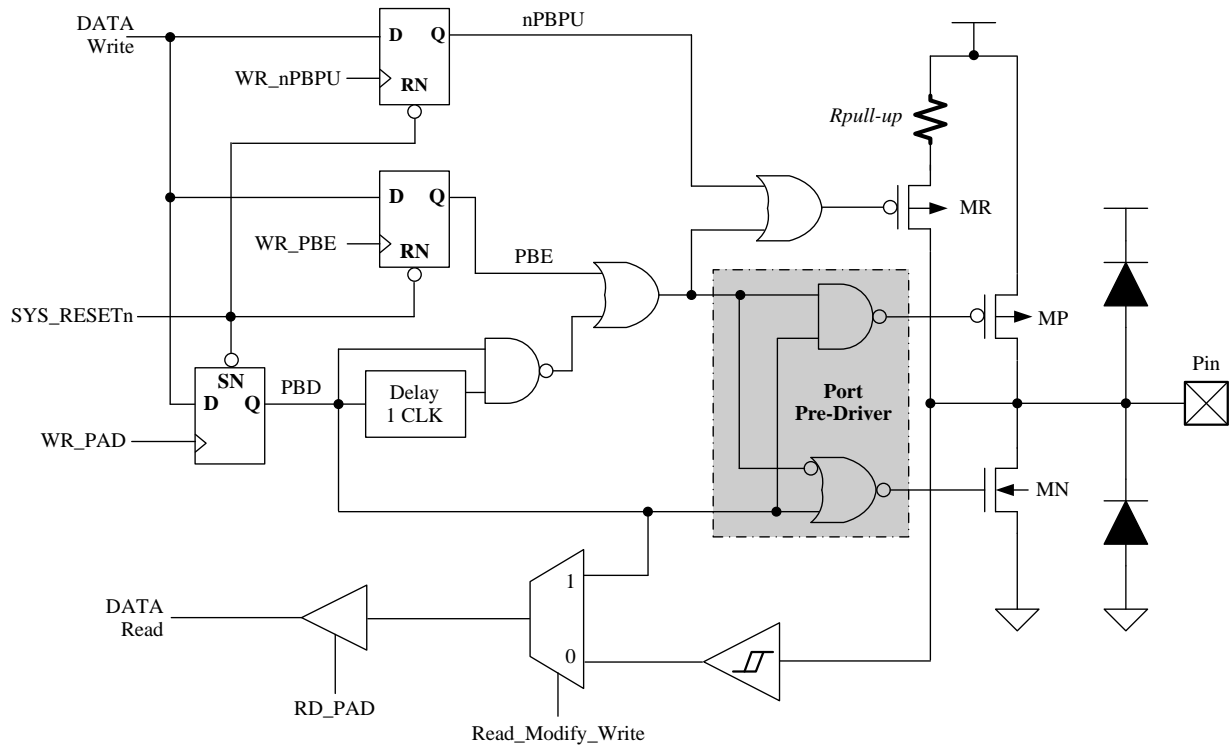


#### PA0-7, nPAPU=0

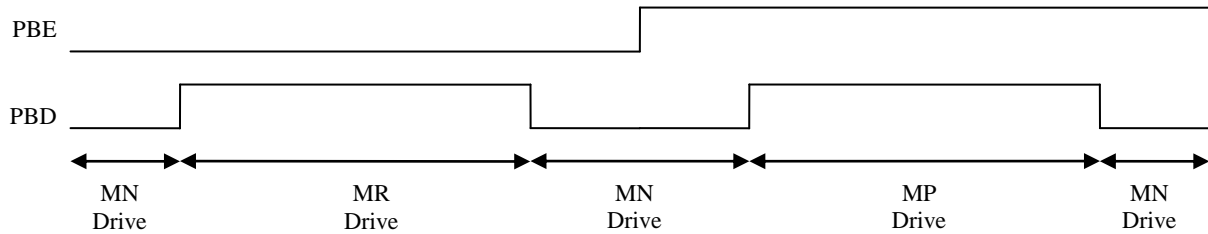


### 7.2 PB0

This pin is almost same as PA0-7, except they do not support pseudo-open-drain mode. They can be used in pure open-drain mode, instead.



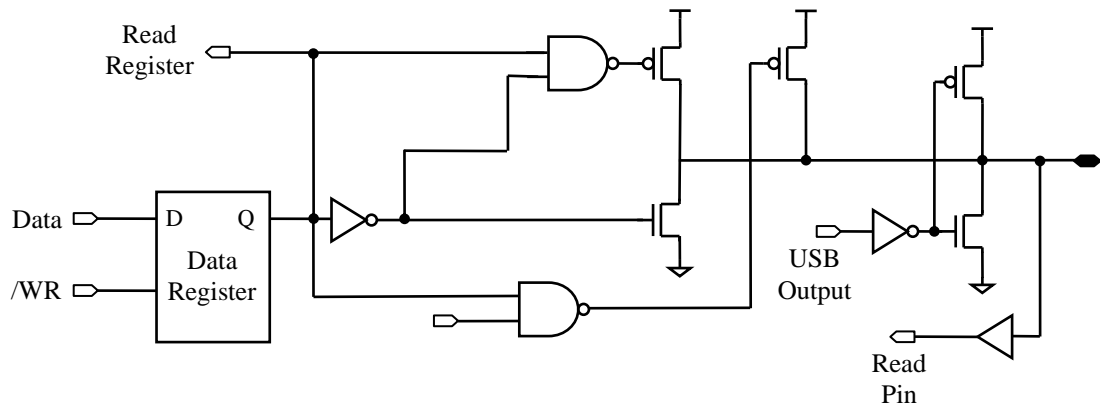
#### PB0, nPBPU=0





### 7.3 PB3 (DP) and PB2 (DM)

These pins are similar to PB[1:0], except they share the pin with USB function.

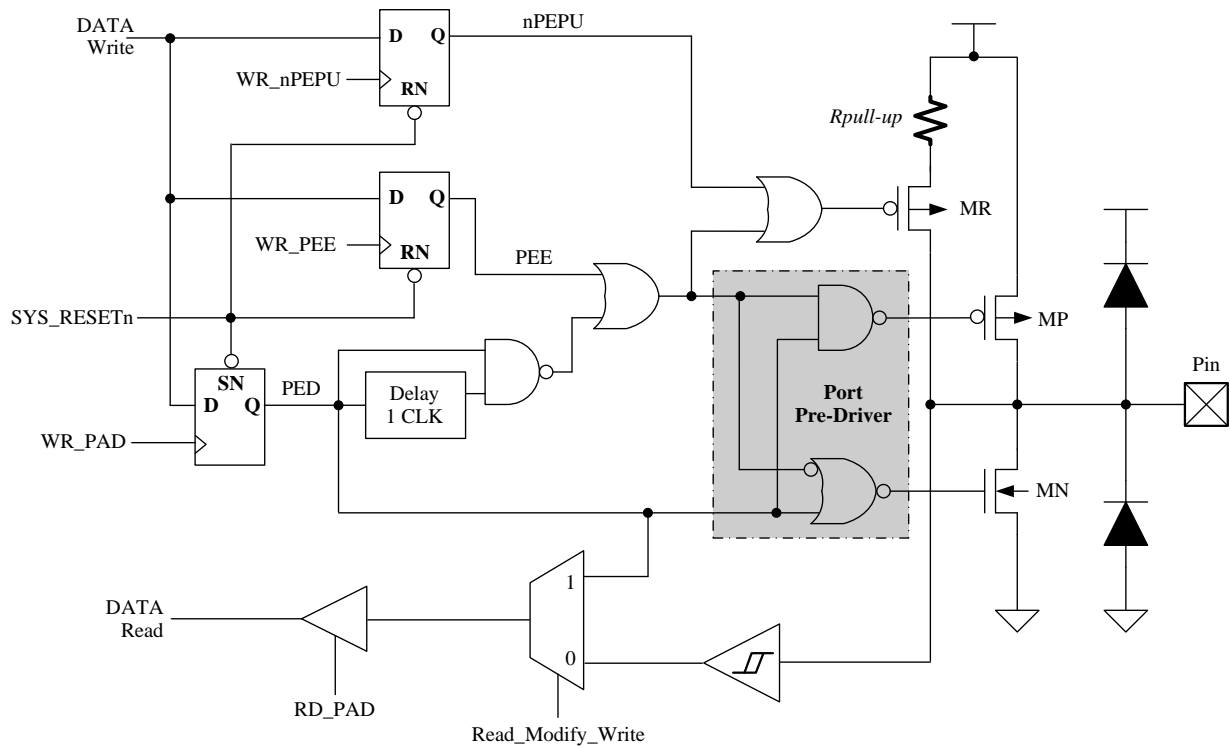


**DP/PB[3] and DM/PB[2]**

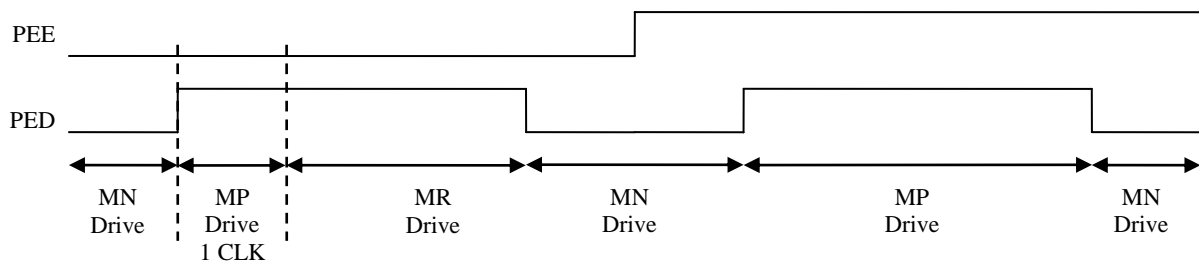
### 7.4 PE0-4

PortE pins are almost same as PA0-7, except the pull-up enable bit. There are 8 different pull-up enable bits nPAPU[7:0] to control PortA. Only one pull-up enable bit nPEPU is used to control PortE. By setting Register R09[1], PE3 can be configured as clock output. R09[0] is used to determine the output clock rate.

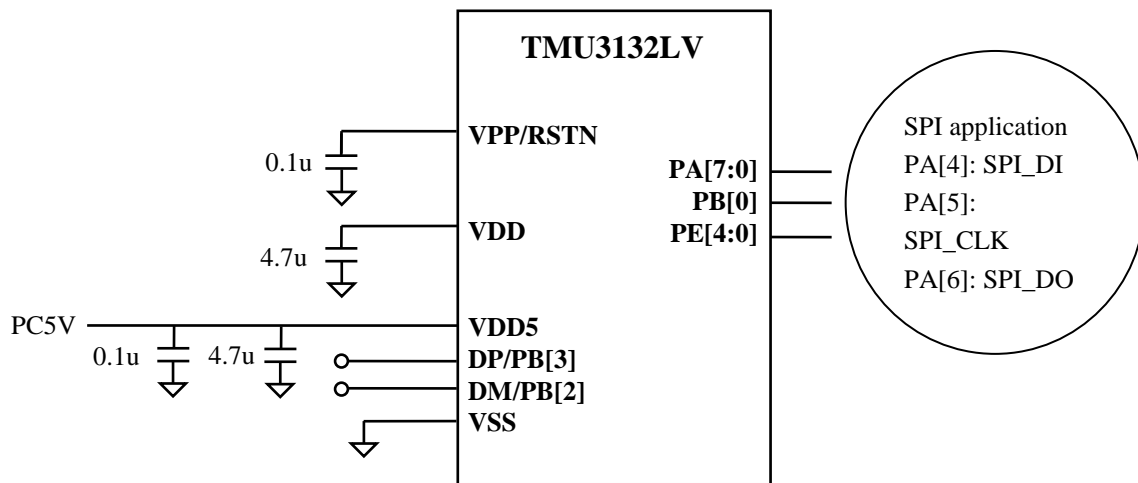
R09[1:0]=2'b0x	PE3 is used as General Purpose IO
R09[1:0]=2'b10	PE3 can output 12 MHz clock
R09[1:0]=2'b11	PE3 can output 6 MHz clock



#### PE0-4, nPEPU=0



### 8. Application



## ELECTRICAL CHARACTERISTICS

### Absolute Maximum Ratings (GND=0V)

Name	Symbol	Range	Unit
Maximum Supply Voltage	VDD5	-0.3 to 5.5	V
Maximum Input Voltage	Vin	-0.3 to VDD +0.3	V
Maximum output Voltage	Vout	-0.3 to VDD +0.3	V
Maximum Operating Temperature	Topg	-40 to +85	°C
Maximum Storage Temperature	Tstg	-65 to +150	°C

### Recommended Operating Condition (At Ta= -20°C to 70°C, GND=0V)

Name	Symb.	Min.	Typical	Max.	Unit	Condition
Supply Voltage	VDD5	4.5	5	5.5	V	
VDD output voltage	VDD		3.3		V	VDD5=5V
Input "H" Voltage	Vih	0.6 VDD			V	
Input "L" Voltage	Vil			0.3 VDD	V	
Operating Voltage for I/O Ports	Vddio		3.3			
3.3V Regulator driving capacity	Ireg		50		mA	

**DC Characteristics** (At Ta= -25°C, VDD5=5.0V, VSS=0V, Fcpu=12 MHz)

Name	Symb.	Min.	Typ.	Max.	Unit	Condition
Internal Clock	F <sub>48m</sub>		48		MHz	Enable IRC, VDD5=5V
Operating current	I <sub>cc</sub>		5		mA	CPU clock=12 MHz
Suspend current	I <sub>pd</sub>		360	500	uA	USB Mode, No load
Output High Current (Push Pull Mode)	I <sub>oh1</sub>		12		mA	VDD5=5V, Voh1=2.8V
Output High Current (Pseudo Open Drain Mode)	I <sub>oh2</sub>		11		uA	VDD5=5V, Voh2=2.8V
Output Low Current (Push Pull Mode)	V <sub>ol</sub>		16		mA	VDD5=5V, Vol1=0.3V
Output Low Current (Pseudo Open Drain Mode)			16		mA	VDD5=5V, Vol2=0.3V
Pull-Up Resistor	R <sub>pull-up</sub>		110		KΩ	VDD5=5V
Input Leakage Current (pin high)	I <sub>ilh</sub>			1	uA	V <sub>in</sub> =VDD
Input Leakage Current (pin low)	I <sub>ill</sub>			-1	uA	V <sub>in</sub> =0V
System Clock Frequency (CPU clock Frequency)	F <sub>cpu</sub>		12		MHz	R07[1:0]=2'b00
			6		MHz	R07[1:0]=2'b01
			3		MHz	R07[1:0]=2'b10
			1.5		MHz	R07[1:0]=2'b11
LVR reference Voltage	V <sub>lvr</sub>		2.0		V	Fcpu=1.5MHz
WDT time	T <sub>wdt</sub>		17.5		ms	VDD5=5V, WRC enable R06[6:5]=2'b00
			35		ms	VDD5=5V, WRC enable R06[6:5]=2'b01
			70		ms	VDD5=5V, WRC enable R06[6:5]=2'b10
			140		ms	VDD5=5V, WRC enable R06[6:5]=2'b11
WKT Time			140		ms	VDD5=5V, WRC enable R06[4:3]=2'b00
			280		ms	VDD5=5V, WRC enable R06[4:3]=2'b01
			560		ms	VDD5=5V, WRC enable R06[4:3]=2'b10
			1120		ms	VDD5=5V, WRC enable R06[4:3]=2'b11

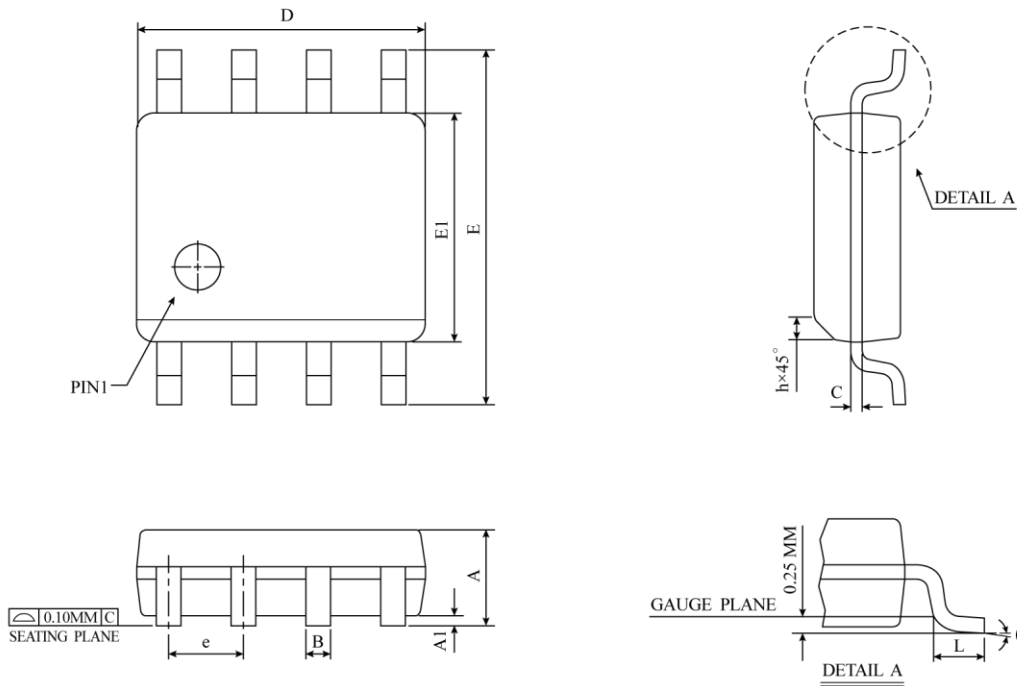
**AC Characteristics** (At Ta=25°C, VDD5V=5.0V, VSS=0V, Fcpu=12 MHz)

Name	Symb.	Min.	Typ.	Max.	Unit	Note
DP/DM rising time	T <sub>rise</sub>	4		20	ns	
DP/DM falling time	T <sub>fall</sub>	4		20	ns	
DP, DM cross point	V <sub>x</sub>	1.3		2.0	V	

Note: All USB transceiver characteristics can meet USB1.1 spec.



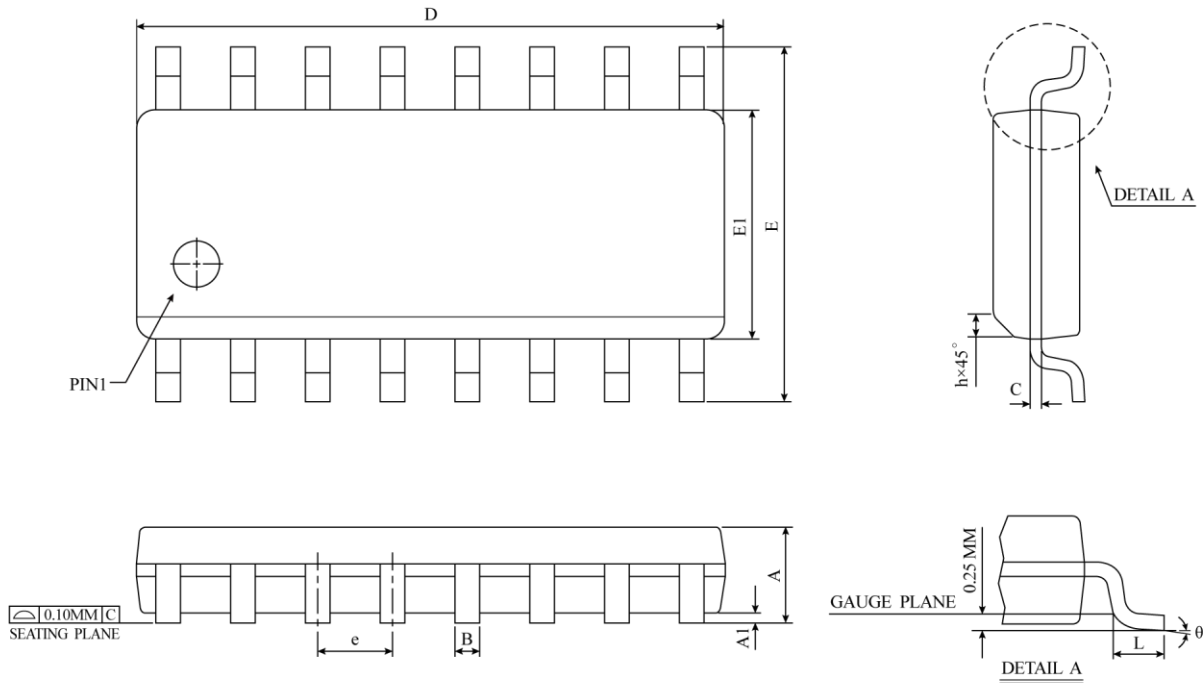
SOP-8 ( 150mil ) Package Dimension



SYMBOL	DIMENSION IN MM			DIMENSION IN INCH		
	MIN	NOM	MAX	MIN	NOM	MAX
A	1.35	1.55	1.75	0.0532	0.0610	0.0688
A1	0.10	0.18	0.25	0.0040	0.0069	0.0098
B	0.33	0.42	0.51	0.0130	0.0165	0.0200
C	0.19	0.22	0.25	0.0075	0.0087	0.0098
D	4.80	4.90	5.00	0.1890	0.1939	0.1988
E	5.80	6.00	6.20	0.2284	0.2362	0.2440
E1	3.80	3.90	4.00	0.1497	0.1536	0.1574
e	1.27 BSC			0.050 BSC		
h	0.25	0.38	0.50	0.0099	0.0148	0.0196
L	0.40	0.84	1.27	0.0160	0.0330	0.0500
θ	0°	4°	8°	0°	4°	8°
JEDEC	MS-012 (AA)					

△ \*NOTES : DIMENSION "D" DOES NOT INCLUDE MOLD FLASH, PROTRUSIONS OR GATE BURRS.  
MOLD FLASH, PROTRUSIONS AND GATE BURRS SHALL NOT EXCEED 0.15 MM ( 0.006 INCH ) PER SIDE.

SOP-16 ( 150mil ) Package Dimension

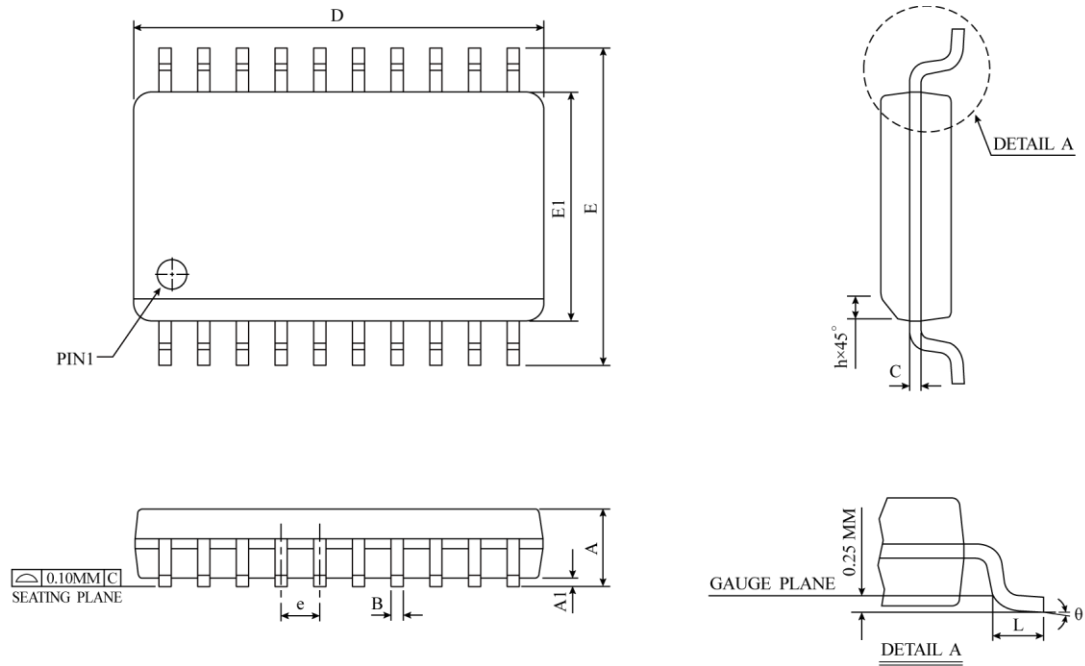


SYMBOL	DIMENSION IN MM			DIMENSION IN INCH		
	MIN	NOM	MAX	MIN	NOM	MAX
A	1.35	1.55	1.75	0.0532	0.0610	0.0688
A1	0.10	0.18	0.25	0.0040	0.0069	0.0098
B	0.33	0.42	0.51	0.0130	0.0165	0.0200
C	0.19	0.22	0.25	0.0075	0.0087	0.0098
D	9.80	9.90	10.00	0.3859	0.3898	0.3937
E	5.80	6.00	6.20	0.2284	0.2362	0.2440
E1	3.80	3.90	4.00	0.1497	0.1536	0.1574
e	1.27 BSC			0.050 BSC		
h	0.25	0.38	0.50	0.0099	0.0148	0.0196
L	0.40	0.84	1.27	0.0160	0.0330	0.0500
θ	0°	4°	8°	0°	4°	8°
JEDEC	MS-012 (AC)					

△ \* NOTES : DIMENSION " D " DOES NOT INCLUDE MOLD FLASH, PROTRUSIONS OR GATE BURRS.  
MOLD FLASH, PROTRUSIONS AND GATE BURRS SHALL  
NOT EXCEED 0.15 MM ( 0.006 INCH ) PER SIDE.



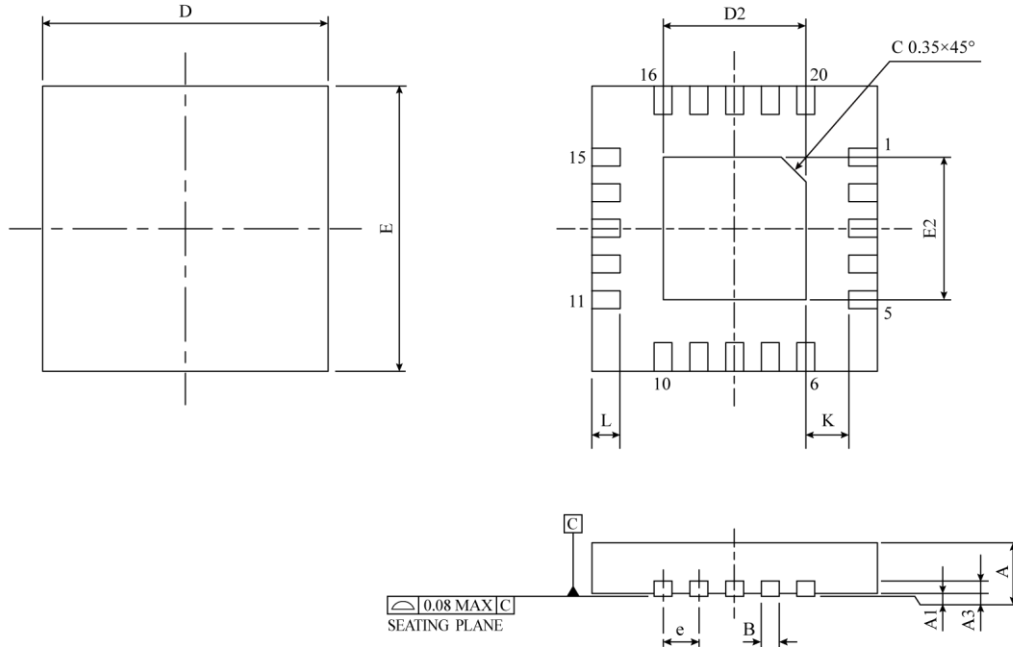
SOP-18/20 ( 300mil ) Package Dimension



SYMBOL	DIMENSION IN MM			DIMENSION IN INCH		
	MIN	NOM	MAX	MIN	NOM	MAX
A	2.35	2.50	2.65	0.0926	0.0985	0.1043
A1	0.10	0.20	0.30	0.0040	0.0079	0.0118
B	0.33	0.42	0.51	0.0130	0.0165	0.0200
C	0.23	0.28	0.32	0.0091	0.0108	0.0125
D	12.60	12.80	13.00	0.4961	0.5040	0.5118
E	10.00	10.33	10.65	0.3940	0.4425	0.4910
E1	7.40	7.50	7.60	0.2914	0.2953	0.2992
e	1.27 BSC			0.050 BSC		
h	0.25	0.50	0.75	0.0100	0.0195	0.0290
L	0.40	0.84	1.27	0.0160	0.0330	0.0500
$\theta$	$0^\circ$	$4^\circ$	$8^\circ$	$0^\circ$	$4^\circ$	$8^\circ$
JEDEC	MS-013 (AC)					

△ \* NOTES : DIMENSION " D " DOES NOT INCLUDE MOLD FLASH, PROTRUSIONS OR GATE BURRS.  
MOLD FLASH, PROTRUSIONS AND GATE BURRS SHALL NOT EXCEED 0.15 MM ( 0.006 INCH ) PER SIDE.

**QFN 20 (4\*4\*0.75-0.5mm) Package Dimension**



SYMBOL	DIMENSION IN MM			DIMENSION IN INCH		
	MIN	NOM	MAX	MIN	NOM	MAX
A	0.70	0.75	0.80	0.028	0.030	0.031
A1	0.00	0.03	0.05	0.000	0.001	0.002
A3	0.20 REF.			0.008 REF.		
B	0.20	0.25	0.30	0.008	0.001	0.012
D	4.00 BSC			0.157 BSC		
E	4.00 BSC			0.157 BSC		
e	0.50 BSC			0.020 BSC		
K	0.20	-	-	0.008	-	-
E2	2.40	2.48	2.55	0.094	0.097	0.100
D2	2.40	2.48	2.55	0.094	0.097	0.100
L	0.35	0.45	0.55	0.014	0.018	0.022
JEDEC	W(V) GGD-11					

△ \* NOTES : DIMENSION B APPLIES TO METALLIZED TERMINAL AND IS MEASURED BETWEEN 0.15mm AND 0.30mm FROM THE TERMINAL TIP. IF THE TERMINAL HAS THE TERMINAL, THE DIMENSION B SHOULD NOT BE MEASURED IN THAT RADIUS AREA. BILATERAL COPLANARITY ZONE APPLIES TO THE EXPOSED HEAT SINK SLUG AS WELL AS THE TERMINALS.