

# TMX W305

## SAW FRONT-END FILTER – DOMESTIC WIRELESS RECEIVERS – RF

### Specification (Rev. 1)

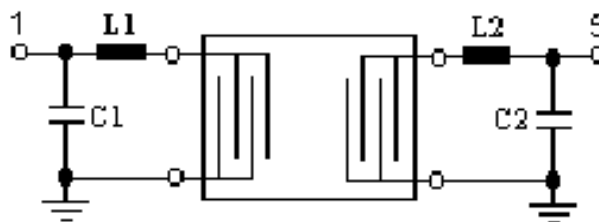
Operating Temperature range : [-35°C ; +85°C]

Electrical Parameters	Unit	Minimum	Typical <sup>(1)</sup>	Maximum
Source Impedance (single ended)	Ω	-	50 <sup>(2)</sup>	-
Load Impedance (single ended)	Ω	-	50 <sup>(2)</sup>	-
Center Frequency fo	MHz	314.925	315.00	315.075
Bandwidth at 3dB	kHz	-	600	-
<b>Rejection</b>				
at fo – 21.4 MHz (Image)	dB	40	50	-
at fo – 10.7 MHz (LO)	dB	15	30	-
ultimate	dB	-	80	-
Insertion Loss	dB	-	3.0	5.5
Frequency Aging	Ppm/yr	-	≤ 10	-
<b>Temperature</b>				
Turnover Temperature	°C	24	39	54
Turnover Frequency	MHz	-	fo	-
Frequency Temperature Coefficient	Ppm/°C	-	0.032	-
<b>External Impedance Match</b>				
Series Inductance L <sub>1</sub> , L <sub>2</sub>	nH	-	80	-
Shunt Capacitance C <sub>1</sub> , C <sub>2</sub>	pF	-	13	-
<b>Package type &amp; size</b>				
Length x Width	mm <sup>2</sup>	-	5.0 x 5.0	-
Height	mm	-	1.35	1.5
<b>Pin Out</b>				
Input	1	Output	5	
Input ground	2	Output ground	6	
Case Ground	4,8	To Be Grounded	3,7	

**Notes :**

- (1) Typical values are nominal performances at room temperature
- (2) External matching circuit is required (see drawing hereunder)

### 50 Ω / 50 Ω Configuration



# TMX W305

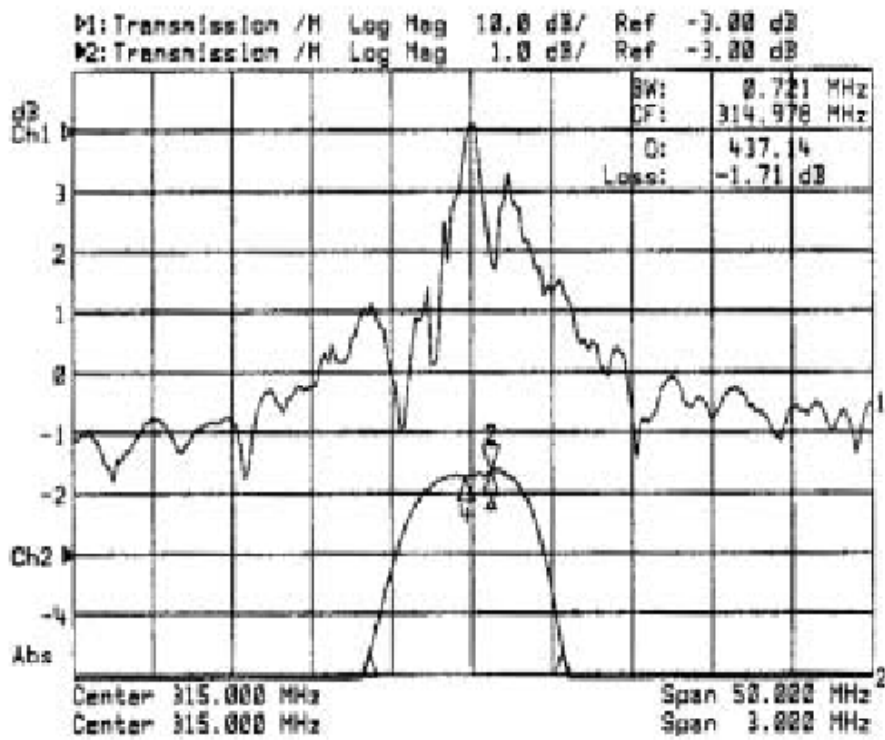
## SAW FRONT-END FILTER – DOMESTIC WIRELESS RECEIVERS – RF

Specification (Rev. 1)

### Maximum Ratings

Rating		Unit	Value
Input Power Level		13	dBm
Storage Temperature Range	T <sub>stg</sub>	-45 to +85	°C
DC Voltage	V <sub>DC</sub>	12	V

### TYPICAL S21 RESPONSE

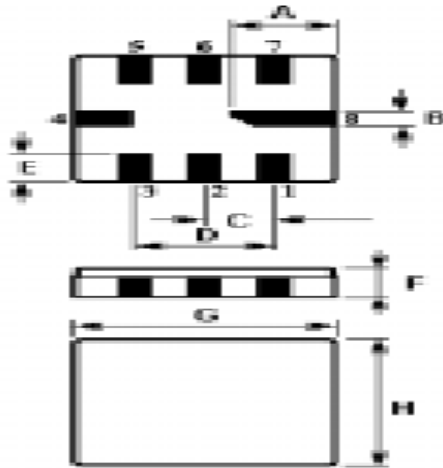


# TMX W305

## SAW FRONT-END FILTER – DOMESTIC WIRELESS RECEIVERS – RF

Specification (Rev. 1)

### Package Drawing



Sign	Data (unit : mm)	Sign	Data (unit : mm)
A	2.08	E	1.20
B	0.60	F	1.35
C	1.27	G	5.00
D	2.54	H	5.00