

"TP" & "QP" SERIES – Horizontal P.C. Mount Glass and

FIG. 1

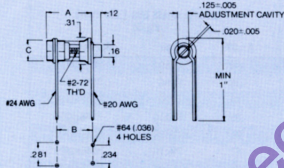


FIG. 2

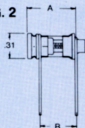
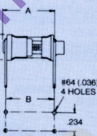


FIG. 3



FIG. 4



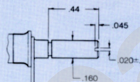
NOTES:

1. All Fig. 2 thru Fig. 4 parts have same end view as Fig. 1. Fig. 2 and 3 have mounting dimensions of Fig. 1
2. C diameter of Fig. 1 parts .27 for embedded band and .25 on all other parts.

Detailed General Specifications on Page 24

Optional Configurations

EXTENDED PLASTIC SHAFT



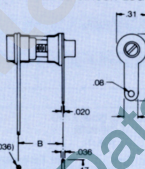
Add "E1" to Type Number
(ex. TP9CE1)

EXTENDED METAL SHAFT



Add "E" to Type Number
(ie., TP9E)

PRINTED CIRCUIT LUG



Add "L" to Type Number
(ie., TP28L)

**GLASS
ANNULAR
BAND**

Capacitance Range (pF)		Q (Min.)
From Below	To Above	1 MHz
0.8	4.5	650
0.8	5.5	700
0.8	8.5	650
1.0	11.0	700
0.8	12.0	650
0.8	16.0	700
0.8	18.0	650
0.8	21.0	700
0.8	23.0	700
0.8	30.0	650
0.8	38.0	700

**GLASS
EMBEDDED
BAND**

Capacitance Range (pF)		Q (Min.)
From Below	To Above	1 MHz
2.0	10.0	800
1.5	14.0	700
1.2	16.0	800
1.0	16.0	800
2.0	25.0	800
1.0	28.0	700
1.0	36.0	800
1.0	42.0	700
1.0	52.0	800
1.0	60.0	650
1.0	75.0	700
1.0	90.0	600
1.0	120.0	600
2.0	180.0	500

QUARTZ

Capacitance Range (pF)		Q (Min.)
From Below	To Above	1 MHz
0.8	1.8	2000
0.6	5.5	2000
0.6	9.5	2000
0.8	16.0	2000