

Applications

- Base Station Receivers
- Tower Mount Amplifiers
- Repeaters
- FDD-LTE, TDD-LTE, WCDMA
- General Purpose Wireless

Product Features

- 1500–2700 MHz Operational Bandwidth
- LNA With Integrated Bypass Mode
- Ability to Turn LNA and Bypass Mode OFF
- Ultra Low Noise: 0.6 dB NF
- 17.5 dB Gain
- +33 dBm Output IP3
- +41 dBm Input IP3 in Bypass Mode
- Internally Matched
- Positive Supply Only: +3.3 V to +5 V
- 3 x3 mm 10-pin DFN Plastic Package

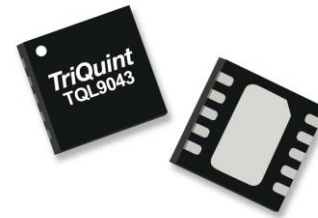
General Description

The TQL9043 is an ultra-low noise, high-linearity gain block amplifier with an integrated bypass mode function. At 1900 MHz, this amplifier typically provides 17.5 dB gain, +33 dBm OIP3 and 0.6 dB noise figure while drawing 80 mA current from a +5 V supply. The TQL9043 also provides high linearity in the bypass mode with +41 dBm input IP3.

The TQL9043 is internally matched using a high performance E-pHEMT process and only requires four external components for operation from a single positive supply: an external RF choke and blocking/bypass capacitors. This low noise amplifier contains an internal active bias circuit to maintain high performance over temperature.

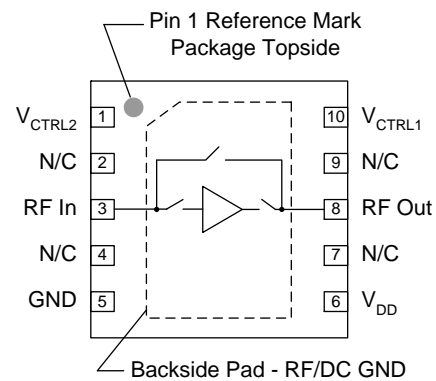
The TQL9043 covers the 1500–2700 MHz frequency band and is targeted for wireless infrastructure.

The TQL9043 is available in a 3 x3 mm DFN package and is pin compatible with the 500–2000 MHz TQL9042 and 1700–4000 MHz TQL9044.



10-pin 3 x3 mm DFN Package

Functional Block Diagram



Pin Configuration

Pin No.	Label
1	V _{CTRL2}
2, 4, 7, 9	N/C
3	RF _{In}
5	GND
6	V _{DD}
8	RF _{Out}
10	V _{CTRL1}
Backside Paddle	RF/DC GND

Ordering Information

Part No.	Description
TQL9043	Ultra Low Noise Bypass LNA
TQL9043-PCB	1.5 – 2.7 GHz Evaluation Board

Standard T/R size = 2500 pieces on a 7" reel

Absolute Maximum Ratings

Parameter	Rating
Storage Temperature	-65 to +150 °C
Drain Voltage (V _{DD})	+7 V
Input Power (CW)	+24 dBm

Operation of this device outside the parameter ranges given above may cause permanent damage.

Recommended Operating Conditions

Parameter	Min	Typ	Max	Units
Drain Voltage (V _{DD})	+3.3	+5.0	+5.25	V
Operating Temp. Range	-40		+105	°C
T _{ch} (for >10 ⁶ hrs MTTF)			+190	°C

Electrical specifications are measured at specified test conditions. Specifications are not guaranteed over all recommended operating conditions.

Electrical Specifications

Test conditions unless otherwise noted: V_{DD} = +5 V, Temp. = +25 °C. Tested in an unmatched 50 Ω fixture.
Input trace loss up to package pin de-embedded on noise figure data.

Parameter	Conditions	Min	Typ	Max	Units
Operational Frequency Range		1500		2700	MHz
Test Frequency			1900		MHz
Gain	Bypass OFF, LNA ON	16	17.5	19	dB
Input Return Loss	Bypass OFF, LNA ON		7.2		dB
Output Return Loss	Bypass OFF, LNA ON		13		dB
Noise Figure	Bypass OFF, LNA ON		0.6	0.9	dB
Output P1dB	Bypass OFF, LNA ON		+19.4		dBm
Output IP3	Bypass OFF, LNA ON P _{out} = +5 dBm / tone, Δf = 1 MHz	+28.5	+33		dBm
Insertion Loss	Bypass ON, LNA OFF		1.6	3.0	dB
Return Loss	Bypass ON, LNA OFF		10		dB
Input IP3	Bypass ON, LNA OFF Pin = +6.5 dBm / tone, Δf = 1 MHz		+41		dBm
Isolation	LNA OFF, Bypass OFF		13.5		dB
Drain Voltage, V _{DD}			+5		V
Control Voltage, V1, V2 ⁽¹⁾	V _{IH}	2.4		V _{DD}	V
	V _{IL}	0		0.4	V
Current, I _D	LNA ON, Bypass OFF	40	80	120	mA
Current, I _D	Bypass ON, LNA OFF		3		mA
Switching Speed ⁽²⁾	Bypass ON to LNA ON Mode		666		ns
	LNA ON to Bypass ON Mode		550		ns
	LNA ON to LNA OFF & Bypass OFF		330		ns
Thermal Resistance, θ _{jc}	Channel to case		44		°C/W

Notes:

- 1) The limits shown are true when using the external resistive divider values as shown on the TriQuint app board.
- 2) To achieve these fast switching speeds it is required to place a shunt 10K resistor at the RFout pin 8. Refer to pg. 7.

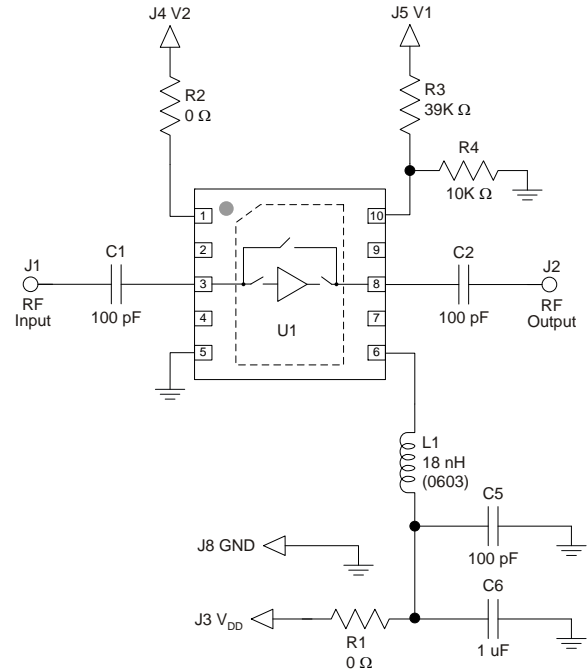
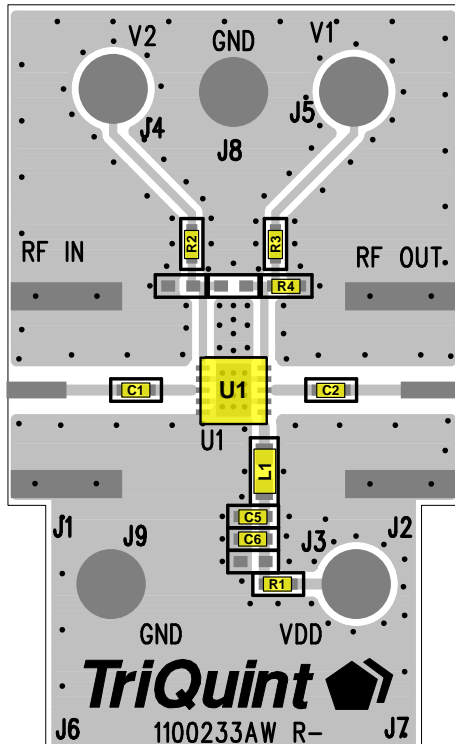
Control Truth Table

V _{CTRL2}	V _{CTRL1}	State
Low	High	LNA OFF, Bypass OFF
High	High	LNA OFF, Bypass ON
Low	Low	LNA ON, Bypass OFF
High	Low	Reserved (Do not use)

Control Voltage Limits (at device pins)

	State	Bias Condition
V _{CTRL1}	Low	≤ 0.1 V
	High	≥ 0.52 V
V _{CTRL2}	Low	≤ 0.4 V
	High	≥ 1.3 V

TQL9043-PCB Evaluation Board



Bill of Material – TQL9043-PCB

Reference Des.	Value	Description	Manuf.	Part Number
U1	n/a	Bypass LNA	TriQuint	TQL9043
C1, C2, C3, C4, C5	100 pF	CAP, 0402, +/-5%, 50V	Panasonic	ECJ-0EC1H101J
C6	1.0 uF	Cap., Chip, 0402, 10%, 10V, X5R	various	
R1, R2	0 Ω	RES, 0402, +/-5%, 1/10W	various	
R3	39K	RES, 0402, +/-5%, 1/10W	various	
R4	10K	RES, 0402, +/-5%, 1/10W	various	
L1	18 nH	IND, 0603, +/-5%	Coilcraft	0603CS-18NXJL

Power-up and Power-down Sequencing

		V _{DD}	V _{CTRL1} & V _{CTRL2}
LNA ON, Bypass OFF	Power-up	1 st	2 nd
	Power-down	1 st	2 nd
LNA OFF, Bypass ON	Power-up	1 st	2 nd
	Power-down	1 st	2 nd

Typical Performance (LNA Mode)

Test conditions unless otherwise noted: $V_{DD} = +5\text{ V}$, $I_D = 80\text{ mA}$, Temp. = +25 °C.
 Input trace loss de-embedded in noise figure data.

Parameter	Typical Value			Units
Frequency	1700	1900	2100	MHz
Gain	18.4	17.5	16.6	dB
Noise Figure	0.55	0.59	0.65	dB
Input Return Loss	6.8	7.1	7.2	dB
Output Return Loss	13.2	13	13	dB
Output P1dB	+19.5	+19.4	+19.6	dBm
OIP3 (Pout/ tone = +5 dBm, $\Delta f = 1\text{ MHz}$)	+33.2	+33	+33	dBm

Typical Performance (Bypass Mode)

Test conditions unless otherwise noted: $V_{DD} = +5\text{ V}$, $I_D = 3\text{ mA}$, Temp. = +25 °C.

Parameter	Typical Value			Units
Frequency	1700	1900	2100	MHz
Insertion Loss	1.6	1.8	1.9	dB
Input Return Loss	9	8.5	8.2	dB
Output Return Loss	10.4	10	9.8	dB
Input IP3 (Pin/ tone = +6.5 dBm, $\Delta f = 1\text{ MHz}$)	+40.7	+40.8	+40.8	dBm

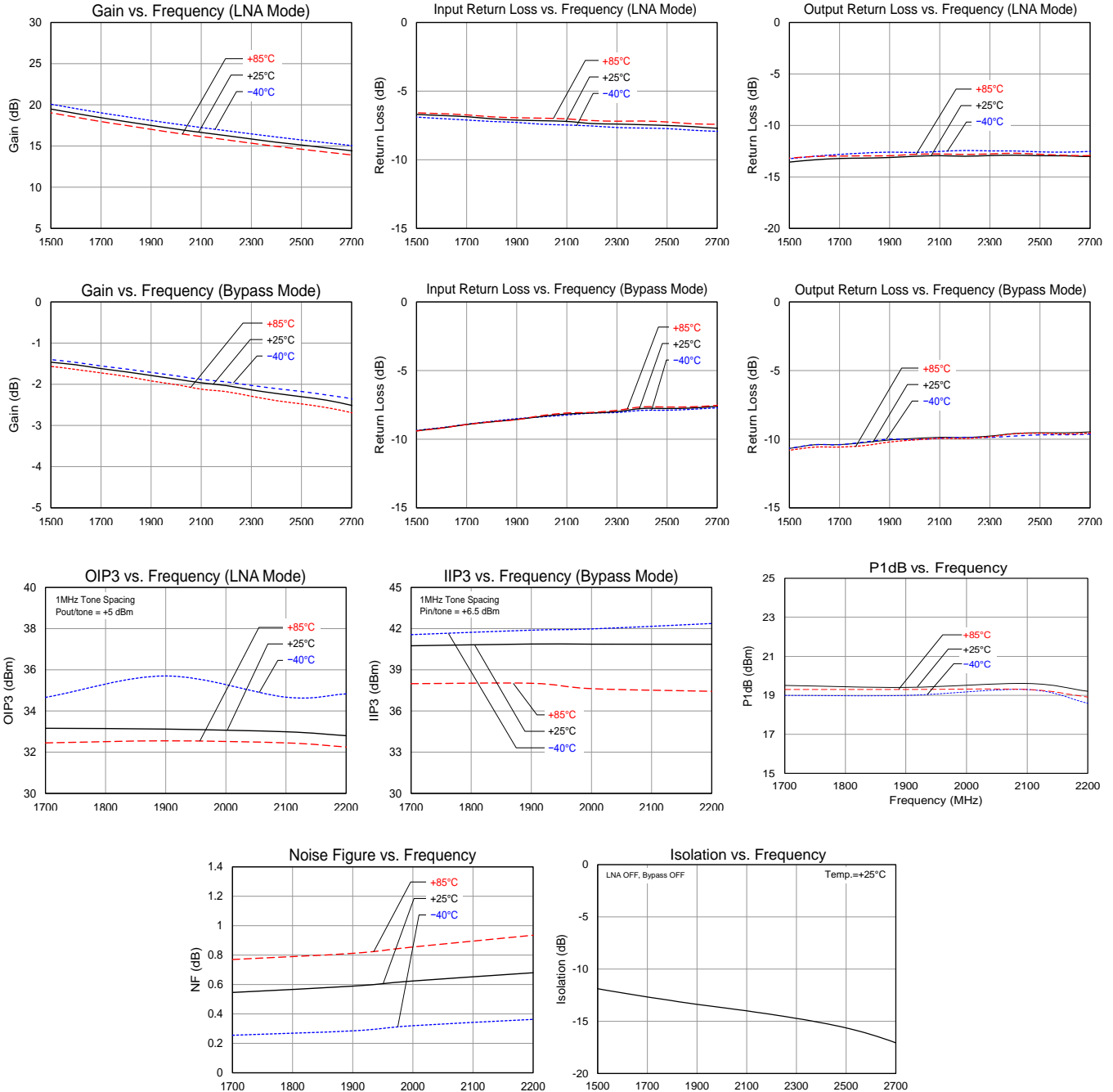
Typical Performance (LNA OFF, Bypass OFF Mode)

Test conditions unless otherwise noted: $V_{DD} = +5\text{ V}$, Temp. = +25 °C.

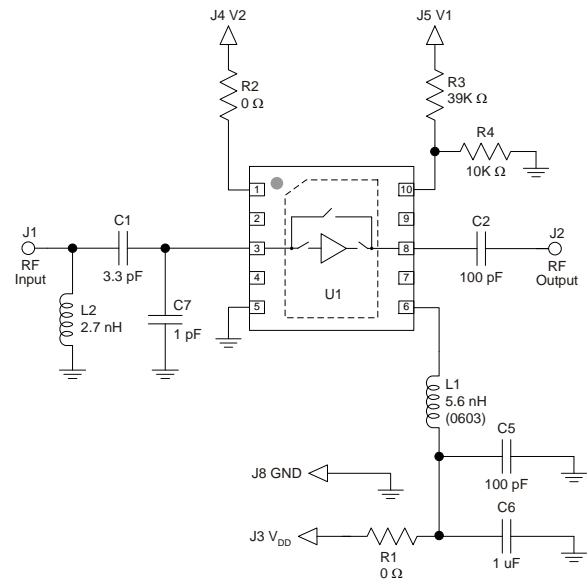
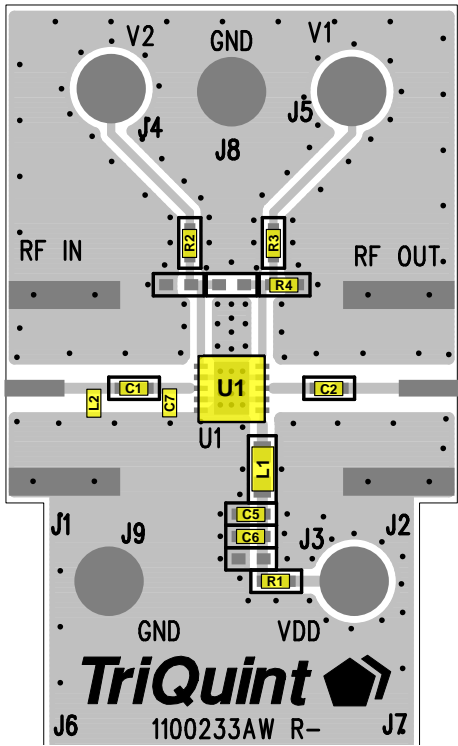
Parameter	Typical Value			Units
Frequency	1700	1900	2100	MHz
Isolation	12.7	13.5	14	dB

Performance Plots

Test conditions unless otherwise noted: $V_{DD} = +5V$, $I_D = 80mA$

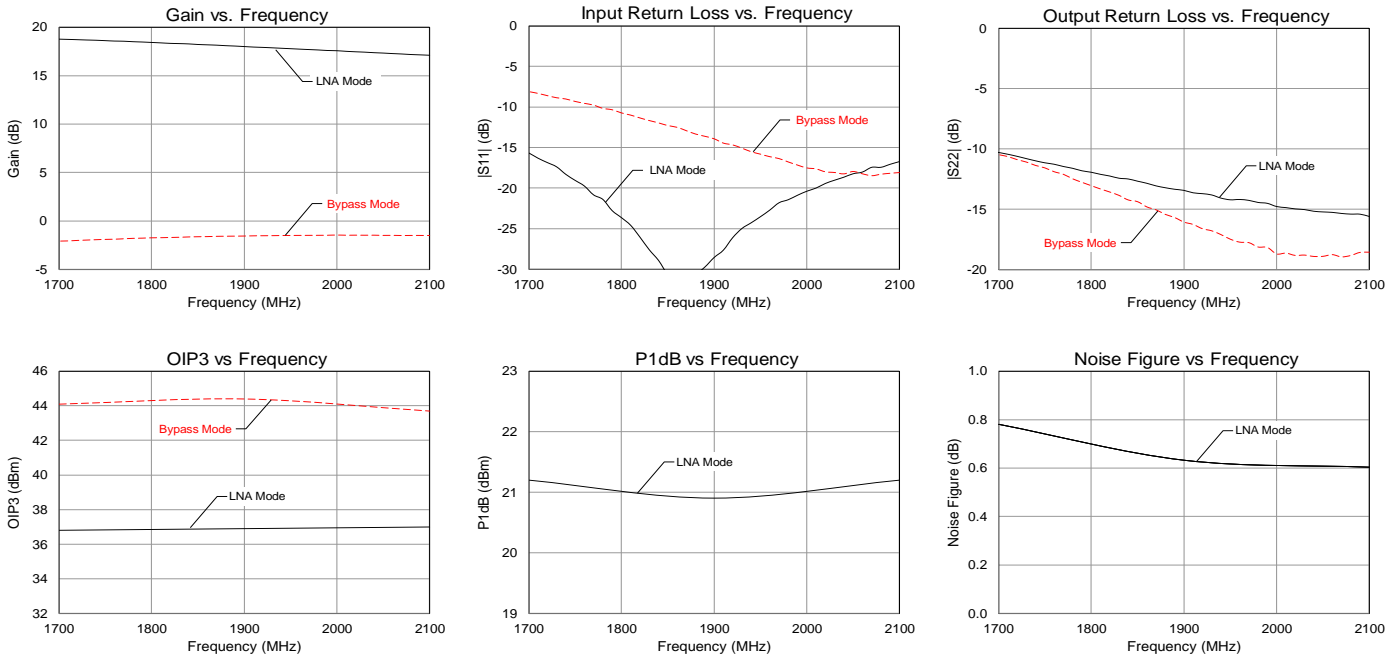


Reference Design – Optimized Return Loss

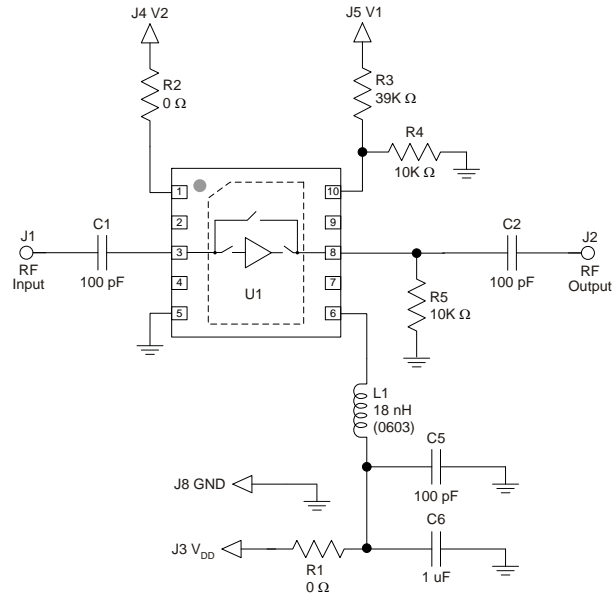
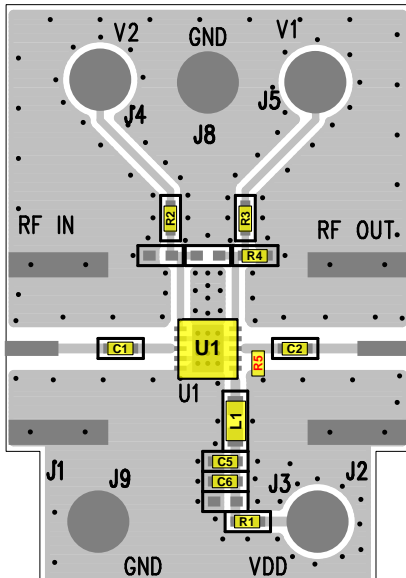


Performance Plots

Test conditions unless otherwise noted: $V_{DD} = +5V$, $I_D = 80mA$

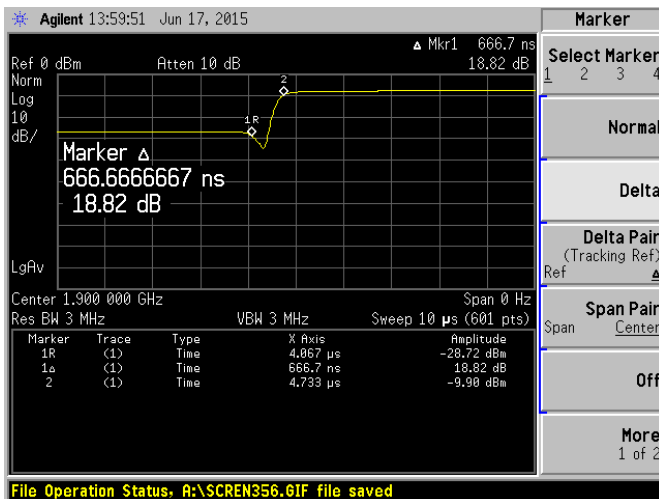


Switching Speed

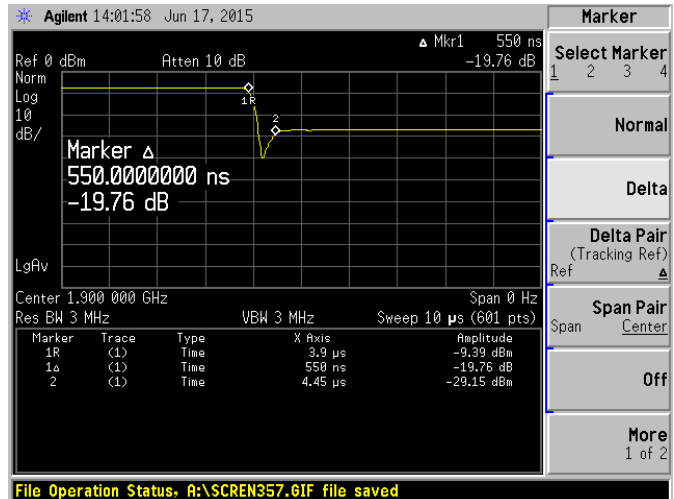


Transition	Value	Units
Bypass to LNA mode	666	ns
LNA to Bypass mode	550	ns

R5, valued 10K, is required to achieve the switching speeds listed above. The placement of R5 is shown on the Qorvo EVB above.

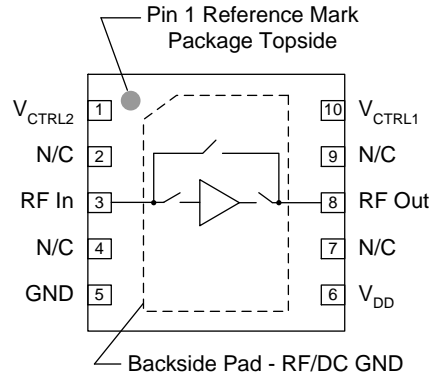


Bypass to LNA mode transition



LNA to Bypass mode transition

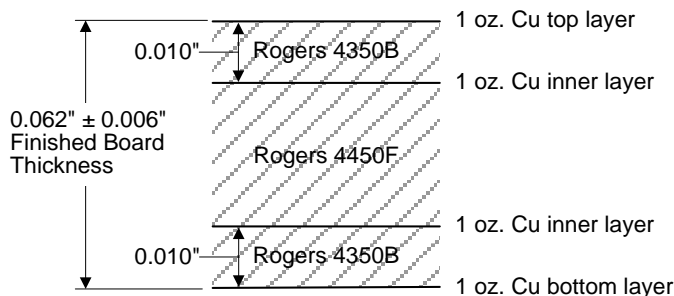
Pin Configuration and Description



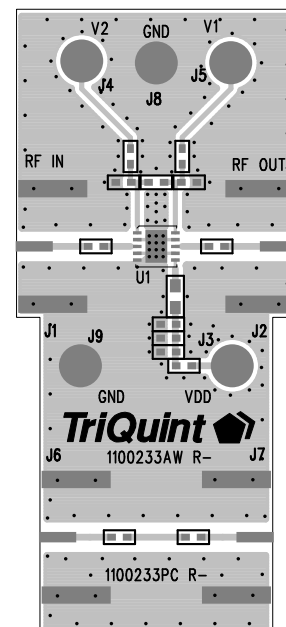
Pin No.	Label	Description
1	V _{CTRL2}	Control pin for bypass mode and LNA mode. Internal resistor divider. Refer to truth table.
2, 4, 7, 9	N/C	No internal connection. These pins can be grounded to provide PCB mounting integrity.
3	RFin	RF input pin. DC block required.
5	GND	RF/DC Ground pin.
6	V _{DD}	Supply voltage pin.
8	RFout	RF output pin. DC block required.
10	V _{CTRL1}	Control pin for bypass mode and LNA mode. Requires external resistor divider. Refer to truth table.
Backside Paddle	RF/DC GND	RF/DC Ground. Follow recommended via pattern and ensure good solder attach for best thermal and electrical performance.

Evaluation Board PCB Information

TriQuint PCB 1100233 Material and Stack-up



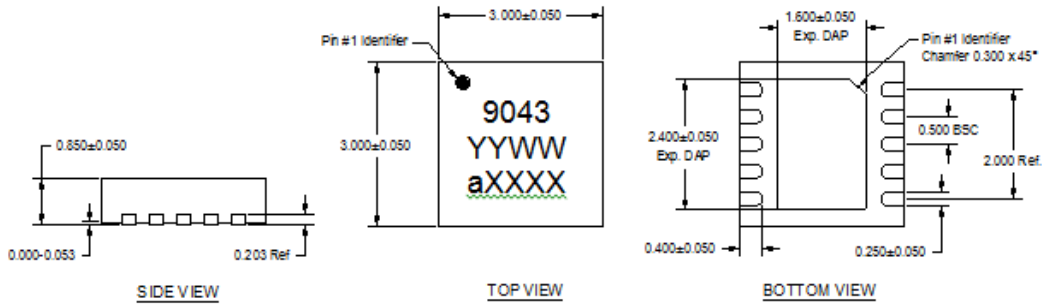
50 ohm line dimensions: width = .020", spacing = .032"



Mechanical Information

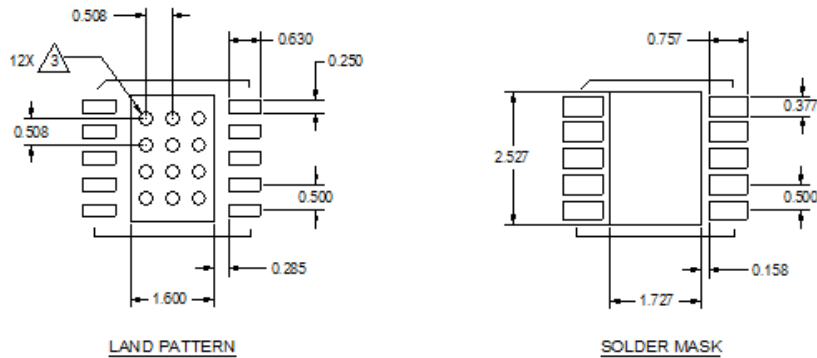
Package Marking and Dimensions

Marking: Part number – 9043
Year/Week – YYWW
Lot Code – aXXXX



1. All dimensions are in millimeters. Angles are in degrees.
2. Except where noted, this part outline conforms to JEDEC standard MO-229.
3. Dimension and tolerance formats conform to ASME Y14.4M-1994.
4. The terminal #1 identifier and terminal numbering conform to JESD 95-1 SPP-012.

PCB Mounting Pattern



Notes:

1. All dimensions are in millimeters. Angles are in degrees.
2. Use 1 oz. copper minimum for top and bottom layer metal.
3. Vias are required under the backside paddle of this device for proper RF/DC grounding and thermal dissipation. We recommend a 0.35mm (#80/.0135") diameter bit for drilling via holes and a final plated thru diameter of 0.25 mm ($0.10''$).
4. Ensure good package backside paddle solder attach for reliable operation and best electrical performance.

Product Compliance Information

ESD Sensitivity



Caution! ESD-Sensitive Device

ESD Rating: Class 1A
Value: $\geq 250V$ to $< 500V$
Test: Human Body Model (HBM)
Standard: JEDEC Standard JESD22-A114

ESD Rating: Class C3
Value: $> 1000V$
Test: Charged Device Model (CDM)
Standard: JEDEC Standard JESD22-C101

MSL Rating

MSL Rating: Level 1
Test: $260^{\circ}C$ convection reflow
Standard: JEDEC Standard IPC/JEDEC J-STD-020

Solderability

Compatible with both lead-free ($260^{\circ}C$ maximum reflow temperature) and tin/lead ($245^{\circ}C$ maximum reflow temperature) soldering processes.

Package contact plating: NiPdAu

RoHs Compliance

This part is compliant with EU 2002/95/EC RoHS directive (Restrictions on the Use of Certain Hazardous Substances in Electrical and Electronic Equipment).

This product also has the following attributes:

- Lead Free
- Halogen Free (Chlorine, Bromine)
- Antimony Free
- TBBP-A ($C_{15}H_{12}Br_4O_2$) Free
- PFOS Free
- SVHC Free

Contact Information

For the latest specifications, additional product information, worldwide sales and distribution locations:

Web: www.triquint.com

Tel: 877-800-8584

Email: customer.support@qorvo.com

For information about the merger of RFMD and TriQuint as Qorvo:

Web: www.qorvo.com

For technical questions and application information:

Email: sjcapplications.engineering@qorvo.com

Important Notice

The information contained herein is believed to be reliable. TriQuint makes no warranties regarding the information contained herein. TriQuint assumes no responsibility or liability whatsoever for any of the information contained herein. TriQuint assumes no responsibility or liability whatsoever for the use of the information contained herein. The information contained herein is provided "AS IS, WHERE IS" and with all faults, and the entire risk associated with such information is entirely with the user. All information contained herein is subject to change without notice. Customers should obtain and verify the latest relevant information before placing orders for TriQuint products. The information contained herein or any use of such information does not grant, explicitly or implicitly, to any party any patent rights, licenses, or any other intellectual property rights, whether with regard to such information itself or anything described by such information.

TriQuint products are not warranted or authorized for use as critical components in medical, life-saving, or life-sustaining applications, or other applications where a failure would reasonably be expected to cause severe personal injury or death.