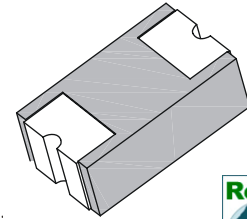


1.0A Low Profile Chip Schottky Rectifier

Features

- Low Profile Package, Build-in Strain Relief
- Low Power Loss , High Efficiency
- High Surge Current Capability
- Super Very Low Forward Voltage
- Plastic Package has Underwriters Laboratory Flammability Classification 94V-0
- RoHS Compliant



**C1810
(SMA)**



Mechanical Data

Case:	Packed with FRP substrate and epoxy underfilled
Terminals:	Pure Tin plated, solderable per MIL-STD-750, Method 2026
Polarity:	Laser cathode band marking
Weight:	0.02 gram

Maximum Ratings ($T_{Ambient}=25^{\circ}C$ unless noted otherwise)

Symbols	Description	TSCDA12	TSCDA14	TSCDA16	TSCDA110	Unit
	Marking Code	S12	S14	S16	S110	
VRRM	Max. Recurrent Peak Reverse Voltage	20	40	60	100	V
VRMS	Max. RMS Voltage	14	28	42	70	V
VDC	Max. DC Blocking Voltage	20	40	60	100	V
Io(AV)	Max. Average Forward Rectified Current (FIG.1)	1.0				A
IFSM	Peak Forward Surge Current (Note1)	30				A
VF	Max. Instantaneous Forward Voltage at 1.0A (Note2)	0.50		0.70	0.85	V
IR	Max. DC Reverse Current at Rated DC Blocking Voltage @Ta=25°C	0.2				mA
RθJL	Typical Thermal Resistance, Junction to Lead (Note3)	28.0				°C/W
TJ	Operating Junction Temperature Range	-55 to +125		-55 to +150		°C
TSTG	Storage Temperature Range	-55 to +150				°C

- Note: 1. 8.3ms single half sine-wave superimposed on rated load (JEDEC method)
 2. Pulse Test with PW = 300 μsec, 1% Duty Cycle.
 3. P.C.B. mounted 5.0 x 5.0mm (0.2 x 0.2") copper pad areas.

1.0A Low Profile Chip Schottky Rectifier

TSCDA12-TSCDA110

Typical Characteristics Curves

Fig.1- Forward Current Derating Curve

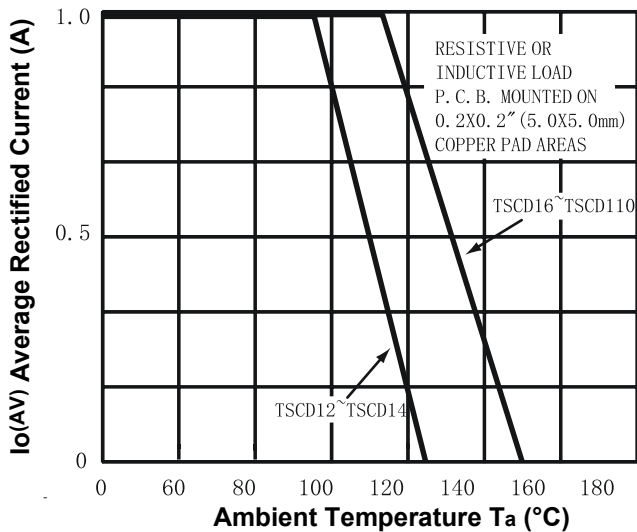


Fig.2-Max. Non-Repetitive Forward Surge Current

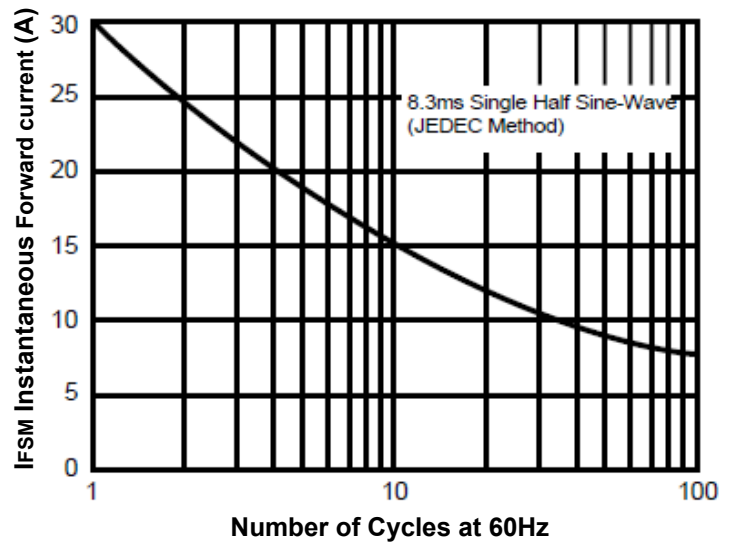


Fig.3- Typical Forward Characteristics

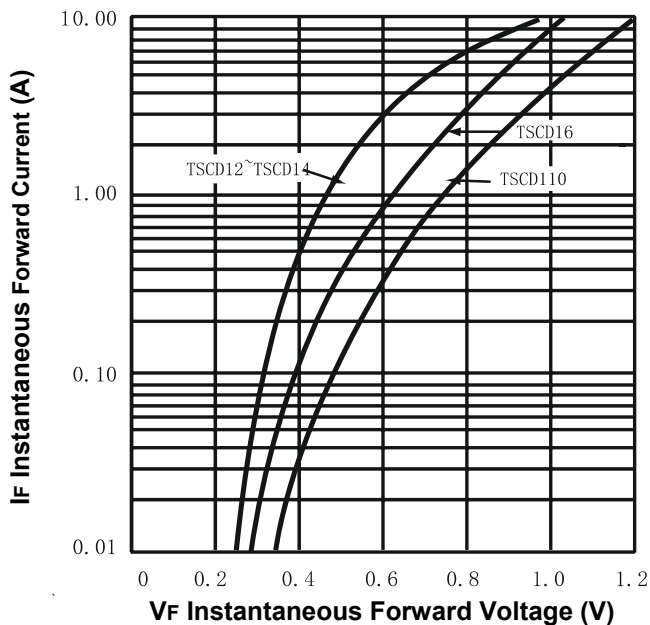
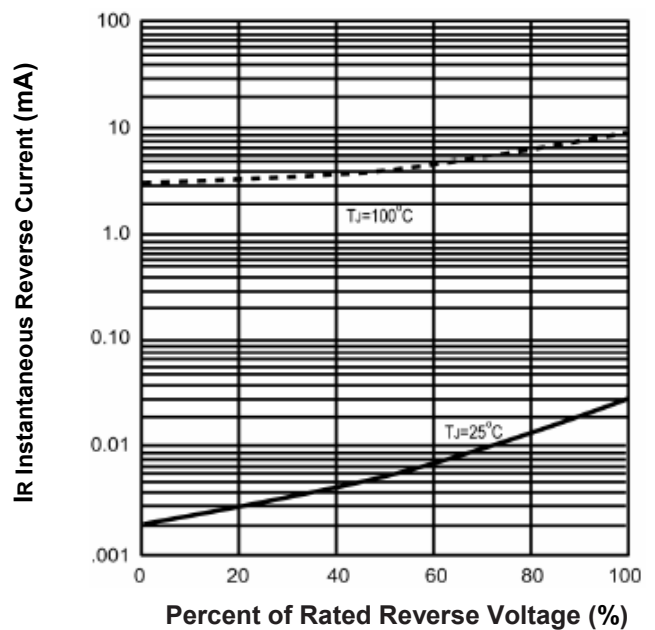


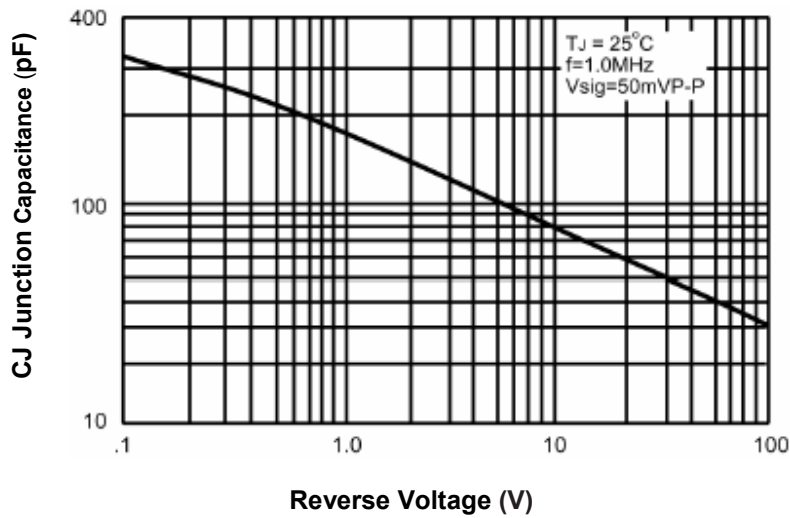
Fig.4- Typical Reverse Characteristics



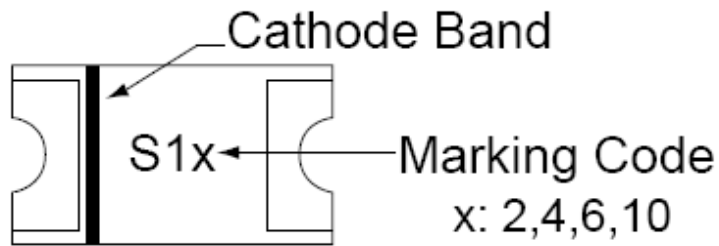
1.0A Low Profile Chip Schottky Rectifier

TSCDA12-TSCDA110

Fig.5- Typical Junction Capacitance



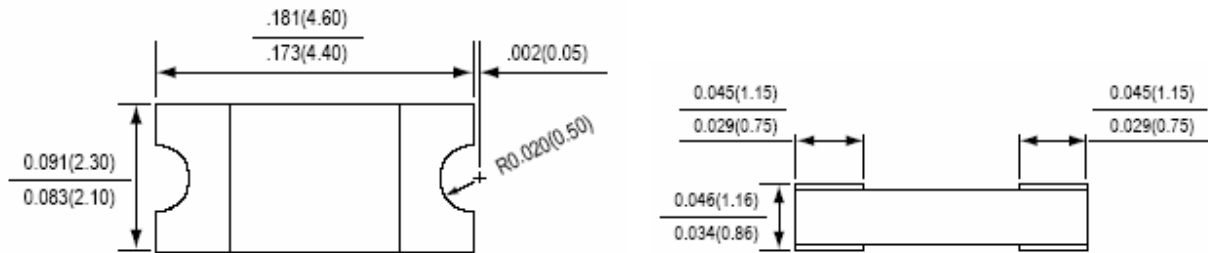
Marking Information:



1.0A Low Profile Chip Schottky Rectifier

TSCDA12-TSCDA110

Dimensions in inch (mm)



**C1810
(SMA)**

How to contact us:

US HEADQUARTERS

28040 WEST HARRISON PARKWAY, VALENCIA, CA 91355-4162

Tel: (800) TAITRON (800) 824-8766 (661) 257-6060

Fax: (800) TAITFAX (800) 824-8329 (661) 257-6415

Email: taitron@taitroncomponents.com

Http://www.taitroncomponents.com

TAITRON COMPONENTS MEXICO, S.A .DE C.V.

BOULEVARD CENTRAL 5000 INTERIOR 5 PARQUE INDUSTRIAL ATITALAQUIA, HIDALGO C.P.

42970 MEXICO

Tel: +52-55-5560-1519

Fax: +52-55-5560-2190

TAITRON COMPONENTS INCORPORATED REPRESENTAÇÕES DO BRASIL LTDA

RUA DOMINGOS DE MORAIS, 2777, 2.ANDAR, SALA 24 SAÚDE - SÃO PAULO-SP 04035-001 BRAZIL

Tel: +55-11-5574-7949

Fax: +55-11-5572-0052

TAITRON COMPONENTS INCORPORATED, SHANGHAI REPRESENTATIVE OFFICE

METROBANK PLAZA, 1160 WEST YAN' AN ROAD, SUITE 1503, SHANGHAI, 200052, CHINA

Tel: +86-21-5424-9942

Fax: +86-21-5424-9931