

#### Features

- Step-down Switching Regulator with very high Efficiency
- Adjustable Output 1.8 – 3.3 VDC or 3.0 – 5.0 VDC
- Remote ON/OFF
- Overload Protection
- Low Output Noise
- Standby Current only 100  $\mu$ A
- Small SIL-Package
- 2 Year Product Warranty



This new generation of step-down converters provides designers with a cost-effective solution for converting a 5, 12 or 24 VDC voltage. To achieve highest efficiency, these dc/dc converters are using newest technologies, as amorphous ferrite, solid aluminum capacitors and a synchronous commutation IC. A very high efficiency allows operation without additional heatsink. This product finds many applications in distributed powersystems where a voltage conversion at the point of load is an required.

Models				
Ordercode	Input voltage range	Output voltage	Output current max.	Efficiency typ.
TSI 10N-0510	4.75 – 13.6 VDC	* + 3.3 VDC	2000 mA	92.0 %
TSI 10N-1211	6.0 – 16.5 VDC	** + 5 VDC	2000 mA	93.0 %
TSI 10N-2410 TSI 10N-2411	16.0 – 28.0 VDC	* + 3.3 VDC ** + 5 VDC	2000 mA 2000 mA	83.0 % 85.0 %

\* Output adjustable 1.8 to 3.3 VDC

\*\* Output adjustable 3.0 to 5.0 VDC

[www.DataSheet4U.com](http://www.DataSheet4U.com)

### Input Specifications

Input current	TSI 10N-0510	21mA / 1435 mA typ.
(no load / full load)	TSI 10N-1211	27 mA / 895 mA typ.
	TSI 10-N2410	45 mA / 330 mA typ.
	TSI 10N-2411	45 mA / 485 mA typ.

Surge voltage (1 sec max.)	5 Vin models	16 V max.
	12 Vin models	25 V max.
	24 Vin models	30 V max.

Stand-by current	100 µA typ.
------------------	-------------

### Output Specifications

Voltage adjustment	TSI 10N-0510 & TSI 10N-2410	+1.8 VDC to +3.3 VDC
	TSI 10N-1211 & TSI 10N-2411	+3.0 VDC to +5.0 VDC

Regulation	– Input variation	± 0.5 %
	– Load variation 10 – 100 %	< 1.5 %

Ripple and noise (20 MHz Bandwidth)	50 mVpk-pk max. (with 2.2µF capacitor on output)
-------------------------------------	--

Transient response time (50% Load change)	100 µsec typ.
---	---------------

Temperature coefficient	± 0.02 % / °C
-------------------------	---------------

Short circuit protection	indefinite foldback
--------------------------	---------------------

Remote ON/OFF control	ON=Pin 1 (ON/OFF Pin) to pin 3 (GND) open (3 – 5 VDC)
	OFF=Pin 1 (ON/OFF Pin) to pin 3 (GND) short (– 0.3 – 1.2 VDC)

### General Specifications

Temperature ranges	– Operating	– 25 °C ... + 70 °C
	– Storage	– 25 °C ... +125 °C

Humidity (non condensing)	95 % rel H max.
---------------------------	-----------------

Reliability, calculated MTBF (MIL-HDBK-217 E)	>1'500'000 h @ 25 °C
---	----------------------

Isolation Input/Output	none
------------------------	------

Switching frequency	300 kHz typ. (PWM modulation)
---------------------	-------------------------------

### Physical Specifications

Vibration (IEC 60068-3-6)	5 to 10 Hz amplitude 10 mm pk-pk 10 to 55 Hz acceleration 2 G
---------------------------	--

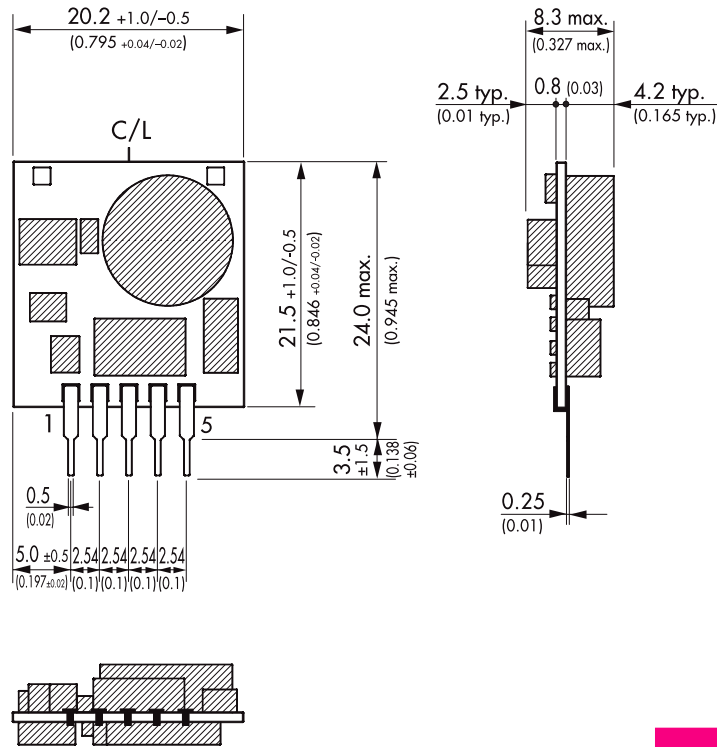
Shock (IEC 6068-2-27)	acceleration 20 G max. time 11 ms
-----------------------	-----------------------------------

Package weight	4 g (0.14 oz)
----------------	---------------

Soldering temperature	235°C max. / 10 sec.
-----------------------	----------------------

All specifications valid at nominal input voltage, full load and +25°C after warm-up time unless otherwise stated.

**Outline Dimensions mm (inches)**

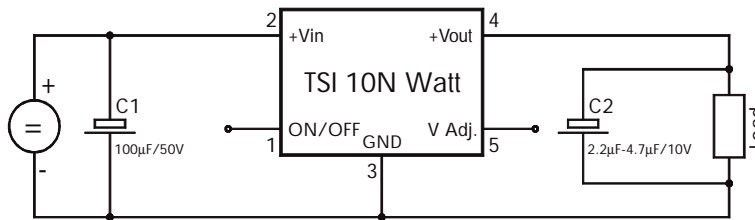


**Pin-Out**

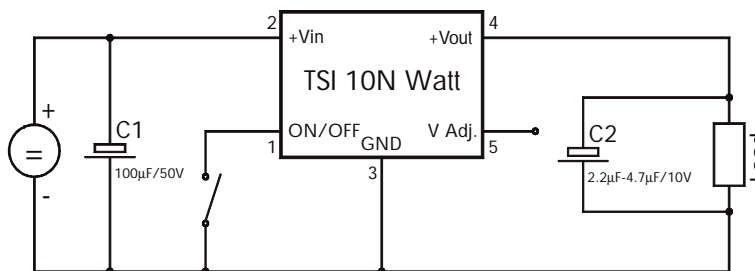
Pin	SIP
1	Remote on/off
2	+V Input (Vcc)
3	-V Input (GND) -V Output
4	+V Output
5	V Output adj.

**Connections**

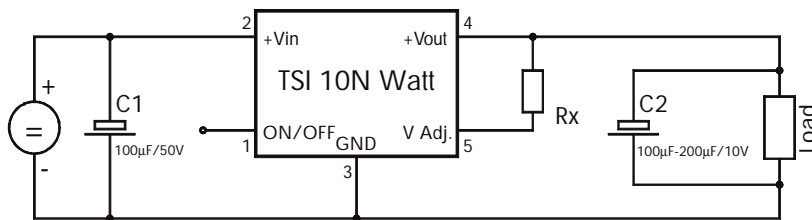
Normal Connection (Standard)



Remote ON/OFF Connection



Output Voltage Adjustment Connection



$$R_x = \frac{R_1 \cdot 1200 \cdot (V_{out} - 1.195)}{R_1 \cdot 1.195 - 1200 \cdot (V_{out} - 1.195)}$$

TSI 10N-xx10 ==> R1 = 2130 Ohm  
Output Voltage (Vout) = 1.8 - 3.3VDC

TSI 10N-xx11 ==> R1 = 3840 Ohm  
Output Voltage (Vout) = 3.0 - 5.0VDC

Vout = adjusted output voltage

Specifications can be changed without notice