

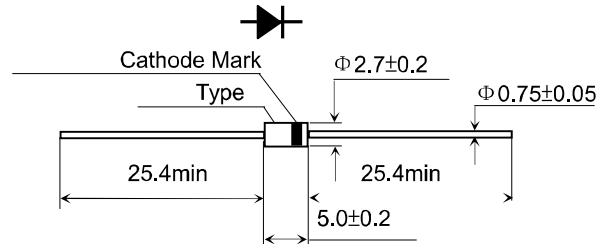
■ **Features**

- $I_{F(AV)}$ 1.0A
- V_{RRM} 50V~1000V
- High reliability
- $t_{rr}① \leq 50ns, 75ns$
- Halogen Free product

■ **Applications**

■ **Outline Dimensions and Mark**

Unit: mm



■ **Limiting Values (Absolute Maximum Rating)**

Item	Symbol	Unit	TUF						
			4001F	4002F	4003F	4004F	4005F	4006F	4007F
Repetitive Peak Reverse Voltage	V_{RRM}	V	50	100	200	400	600	800	1000
Peak Working Reverse Voltage	V_{RWM}	V	50	100	200	400	600	800	1000
Non-Repetitive Peak Reverse Voltage	V_{RSM}	V	75	150	220	440	660	880	1100
Average Forward Current	$I_{F(AV)}$	A	1.0 (50Hz Half-sine wave, Resistance load, $T_{break}=50^{\circ}C$)						
Surge(Non-repetitive)Forward Current	I_{FSM}	A	30 (50Hz Half-sine wave, 1 cycle, $T_a=25^{\circ}C$)						
Junction and Storage Temperature	T_j, T_{stg}	$^{\circ}C$	-40 ~ +150						
Operating Ambient Temperature	T_a	$^{\circ}C$	-40 ~ +150						

■ **Electrical Characteristics ($T_a=25^{\circ}C$ Unless otherwise specified)**

Item	Symbol	Unit	Test Condition	Max						
				TUF						
				4001F	4002F	4003F	4004F	4005F	4006F	4007F
Peak Forward Voltage	V_{FM}	V	$I_{FM}=1.0A$	1.0			1.7			
Peak Reverse Current	I_{RRM1}	μA	$V_{RM}=V_{RRM}$	$T_a=25^{\circ}C$						
	I_{RRM2}			$T_a=100^{\circ}C$						
Reverse Recovery Time	$t_{rr}①$	ns	$I_F=0.5A, I_{RM}=1A, I_{RR}=0.25A$	50			75			
Thermal Resistance (Typical)	$R_{\theta J-A}$	$^{\circ}C/W$	Between junction and ambient		55					
	$R_{\theta J-L}$		Between junction and lead		25					

■ Characteristics(Typical)

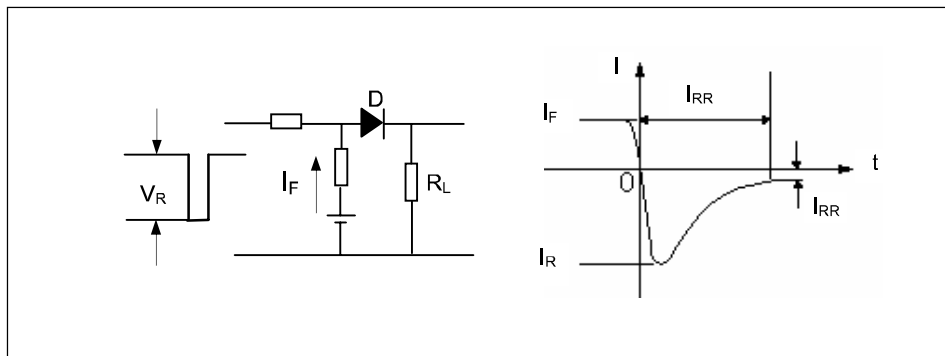
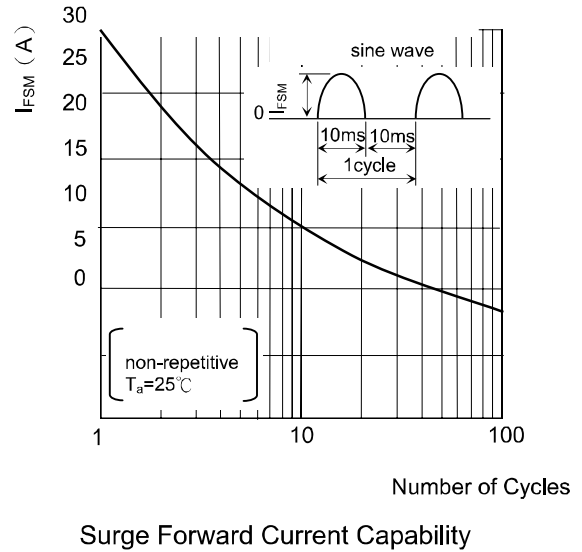
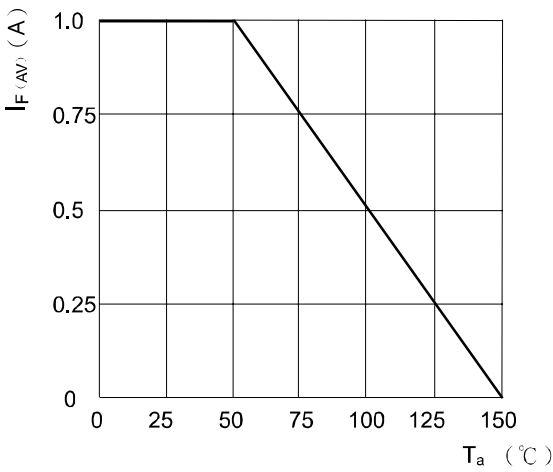
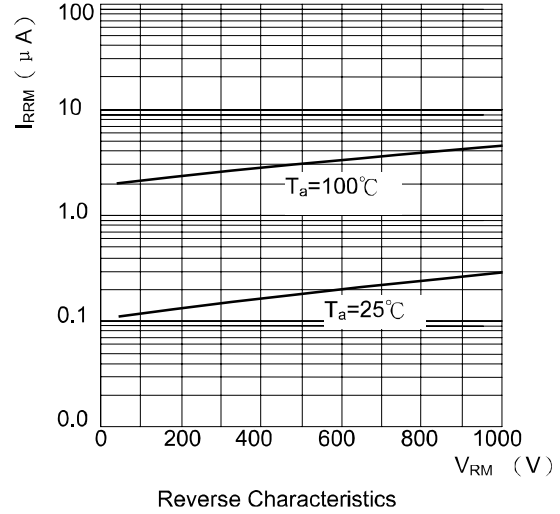
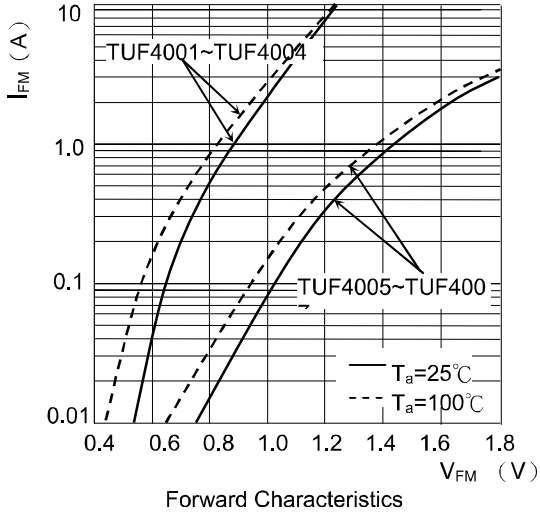


Diagram of Circuit and Testing Wave form of Reverse Recovery Time t_{rr}

Packing Illustration

Type	Mode	Quantity			Method																		
		Fig.① Fig.②	Fig.③	Fig.④																			
Tapping		4000 kpcs/ reel	—	—	<p>Unit: mm</p>																		
	<table border="1"> <thead> <tr> <th>Symbol</th> <th>mm Dimension</th> </tr> </thead> <tbody> <tr> <td>W</td> <td>52 ± 1</td> </tr> <tr> <td>T</td> <td>6 ± 1</td> </tr> <tr> <td>R</td> <td>≤ 0.8</td> </tr> <tr> <td>P</td> <td>5/10 ± 0.5</td> </tr> <tr> <td> L₁-L₂ </td> <td>≤ 1</td> </tr> <tr> <td>Z</td> <td>≤ 1.2</td> </tr> <tr> <td>t</td> <td>≥ 3.2</td> </tr> <tr> <td>S</td> <td>≤ 0.8</td> </tr> </tbody> </table>	Symbol	mm Dimension	W	52 ± 1	T	6 ± 1	R	≤ 0.8	P	5/10 ± 0.5	L ₁ -L ₂	≤ 1	Z	≤ 1.2	t	≥ 3.2	S	≤ 0.8	2000 kpcs/ box	1000 kpcs/ box	—	<p>Unit: mm</p>
	Symbol	mm Dimension																					
W	52 ± 1																						
T	6 ± 1																						
R	≤ 0.8																						
P	5/10 ± 0.5																						
L ₁ -L ₂	≤ 1																						
Z	≤ 1.2																						
t	≥ 3.2																						
S	≤ 0.8																						
		2000 kpcs/ box	—	—	<p>Unit: mm</p>																		
Bulk		2000 kpcs/ box	2000 kpcs/ box	7500 kpcs/ box	<p>Unit: mm</p>																		